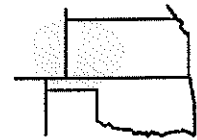


Pro-Stake LLC
 Oil Field & Construction Site Staking
 P.O. Box 2324
 Garden City, Kansas 67846
 Office/Fax: (620) 276-6159
 Cell: (620) 272-1499



132724-L
 PLAT NO.

10432
 INVOICE NO.

Ritchie Exploration, Inc.

#2 Potosi

OPERATOR

LEASE NAME

Ford County, KS

13 27s 24w
 Sec. Twp. Rog.

1662' FNL - 335' FWL

COUNTY

LOCATION SPOT

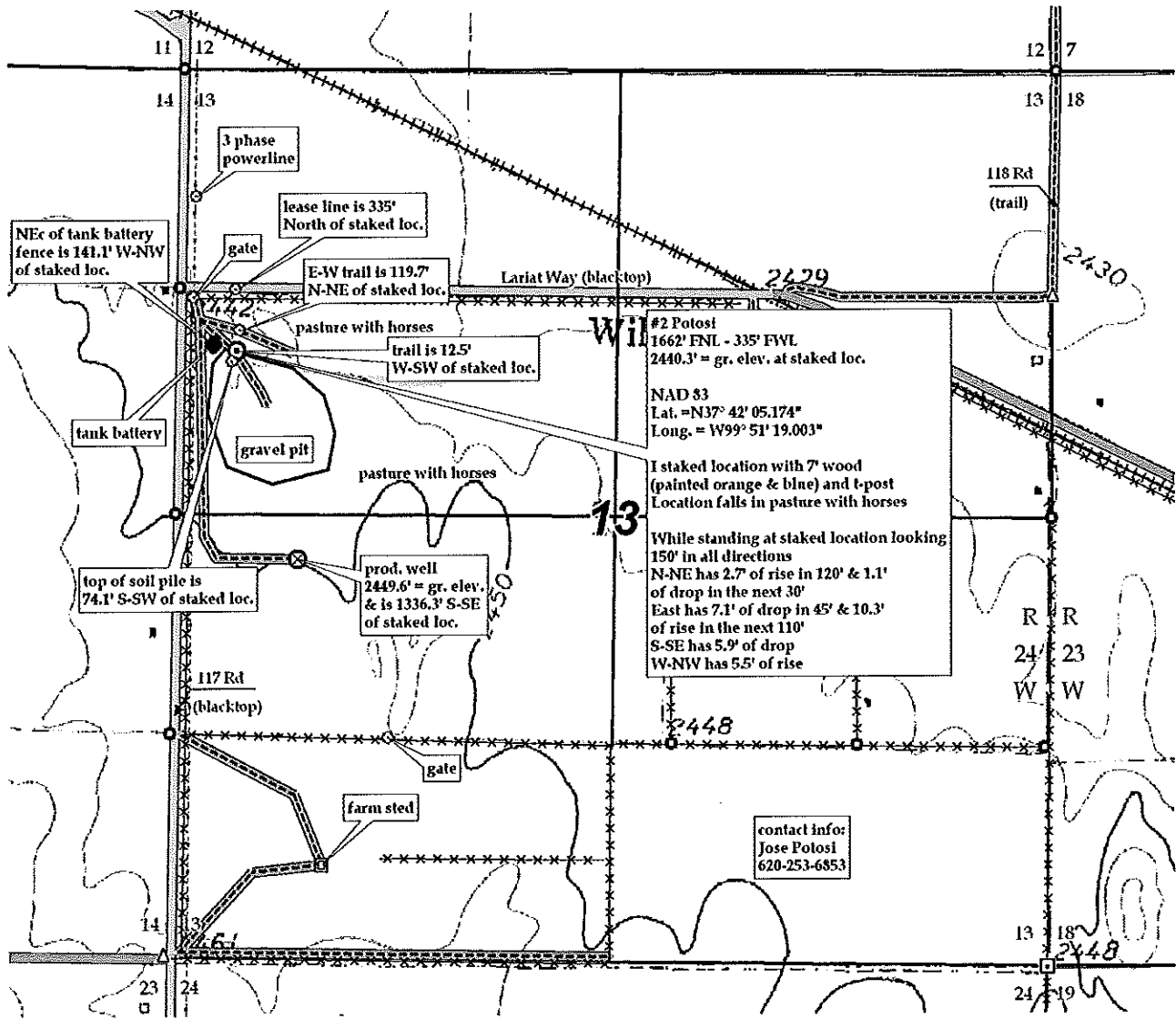
GR. ELEVATION: **2440.3'**

SCALE: **1" = 1000'**
 DATE: **Oct. 29th, 2012**
 MEASURED BY: **Ben R.**
 DRAWN BY: **Luke R.**
 AUTHORIZED BY: **Justin C.**



Directions: From the North side of Fort Dodge, Ks at the intersection of Hwy 400 & Sherdian St. South - Now go 1.8 miles E-SE on Hwy 400 - Now go 1.1 mile South on 117 Rd to the NW corner of section 13-27s-24w - Now go 0.25 mile South on 117 Rd to gate & ingress SE into - Now go 0.1 mile SE on trail - Now go 13' E-NE through pasture with horses into staked location. Final ingress must be verified with land owner or Operator.

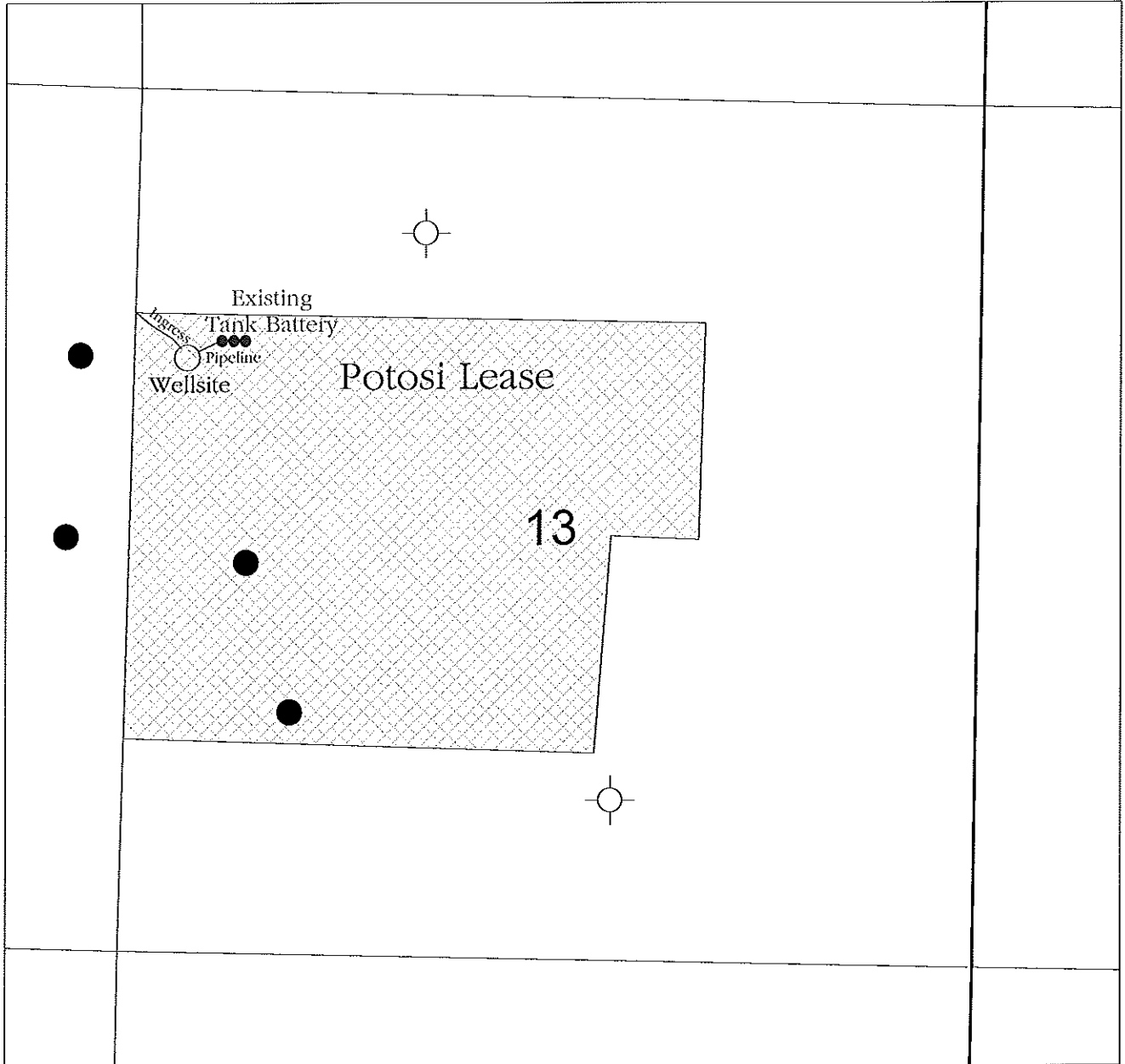
*This drawing does not constitute a monumented survey or a land survey plat.
 This drawing is for construction purposes only.*



KANSAS SURFACE OWNER NOTIFICATION ACT

R 24 W

T
27
S



SCALE = 1 : 12,000

FORD COUNTY, KANSAS