

Nadel & Gussman Energy

Location Kansas
Field Sec 21 - 32S - 9E

Installation Chautauqua County
Well Stelbar 1A-21-32 9H

Scale 1 inch = 100 West (feet) : East (feet) ->

Installation Data						
Name	Latitude	Longitude	Northing	Easting		
Chautauqua County	N37 15 30.76	W96 25 1.71	222284.00	2606162.00		
Coordinate System						
Kansas State Planes, Southern Zone						
Slot Data						
Name	North [ft]	East [ft]	Latitude	Longitude	Northing	Easting
Stelbar 1A-21-32 9H	-192.00 N	-1497.00 E	N37 15 29.20	W96 25 20.27	222092.00	2604665.00
Elevation Data						
Slot - Mean Sea Level [ft]	Mean Sea Level - Mudline/Ground level [ft]		Slot - Mudline/Ground level [ft]			
0.00	0.00		0.00			

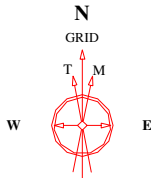
WELL PROFILE DATA								
Point	MD	Inc	Azi	TVD	North	East	deg/100ft	V. Sect
Tie on	0.00	0.00	0.00	0.00	0.00	0.00	0.00	0.00
KOP	1756.00	0.00	0.00	1756.00	0.00	0.00	0.00	0.00
Target Stelbar 1A-21-3	2282.31	50.00	178.75	2218.00	-215.39	4.70	9.50	215.44
Target Stelbar 1A-21-3	2382.31	50.00	178.75	2282.28	-291.98	6.37	0.00	292.05
Target Stelbar 1A-21-3	2473.36	58.54	178.75	2335.40	-365.80	7.98	9.37	365.89
Target Stelbar 1A-21-3	2841.62	90.00	178.75	2434.00	-715.75	15.62	8.54	715.92
T.D. & Target Stelbar 1	5425.49	90.00	178.75	2434.00	-3299.00	72.00	0.00	3299.79

TARGET DATA							
MD	Inc	Azi	TVD	North	East	Name	Position
2282.31	50.00	178.75	2218.00	-215.39	4.70	Stelbar 1A-21-32 9H 50'	2604669.70 East : 221876.61 North
2382.31	50.00	178.75	2282.28	-291.98	6.37	Stelbar 1A-21-32 9H End 50'	2604671.37 East : 221800.02 North
2473.36	58.54	178.75	2335.40	-365.80	7.98	Stelbar 1A-21-32 9H Casing	2604672.98 East : 221726.20 North
2841.62	90.00	178.75	2434.00	-715.75	15.62	Stelbar 1A-21-32 9H LP	2604680.62 East : 221376.25 North
5425.49	90.00	178.75	2434.00	-3299.00	72.00	Stelbar 1A-21-32 9H BHL	2604737.00 East : 218793.00 North

Revised Target: 2-6-12
Target Line 2434 TVD @ 0'VS



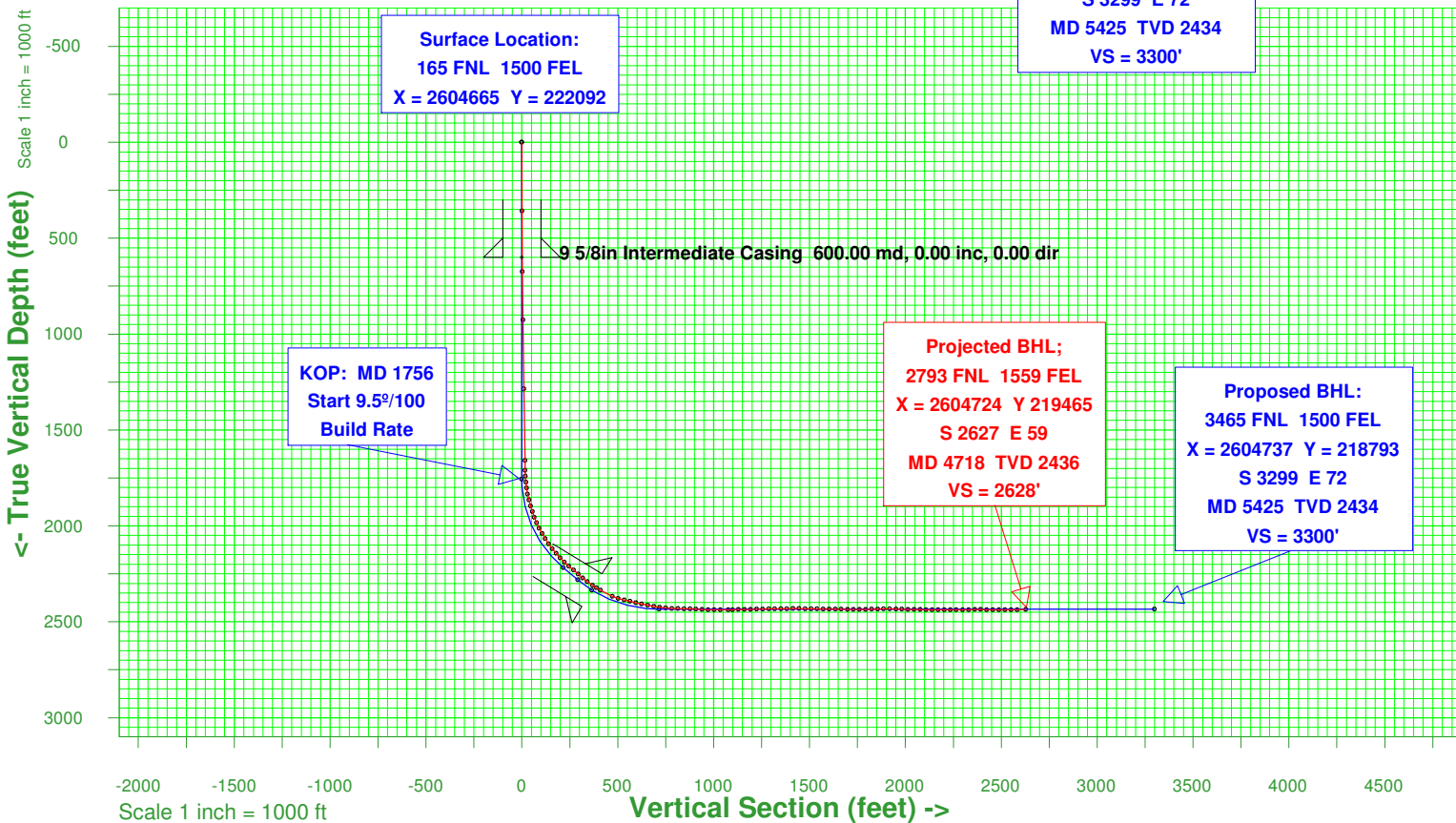
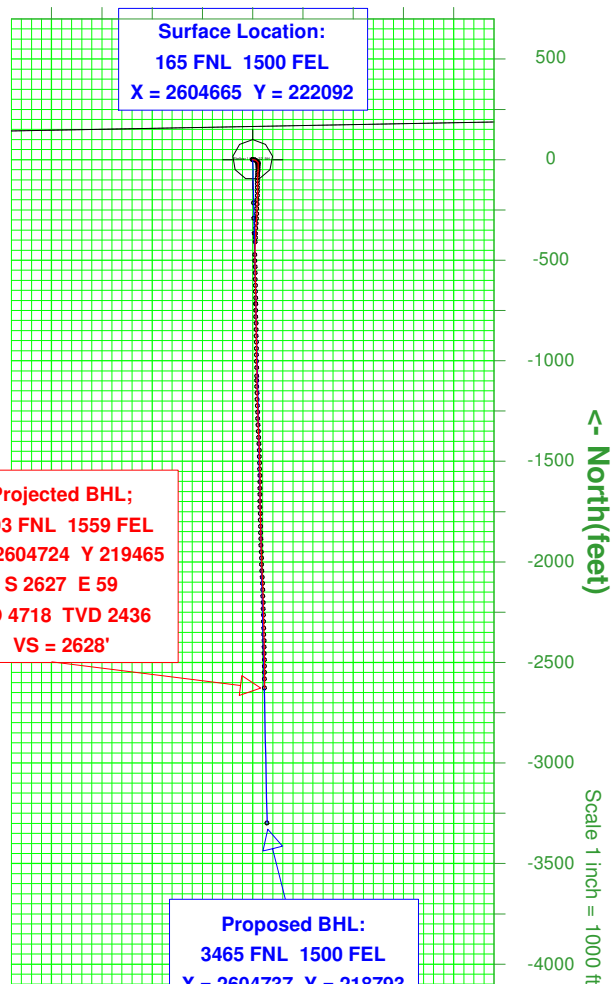
9630 Pole Rd.
Oklahoma City, OK 73160
Tel: (405) 604-2969



Created by admin
Date plotted 13-Feb-2012
Plot reference is Stelbar 1A-21-32 9H (Plan TVD 2434).
Ref wellpath is Stelbar 1A-21-32 9H (PWP#1).
Coordinates are in feet reference Stelbar 1A-21-32 9H.
True Vertical Depths are reference Stelbar 1A-21-32 9H.
Measured Depths are reference Slot.
Plot North is aligned to GRID North.

31-Jan-2012
IGRF Model [1900.0-2015.0] Dip: 65.57 deg Field: 52077.5 nT
Magnetic North is 3.58 deg East of True North
GRID North is 1.28 deg East of True North
To correct azimuth from True to GRID subtract 1.28 deg
To correct azimuth from Magnetic to GRID add 2.30 deg

Scale 1 inch = 100 West (feet) : East (feet) ->



Azimuth 178.75 with reference 0.00 N, 0.00 E from Stelbar 1A-21-32 9H