

Nadel & Gussman Energy

Location Kansas Installation Chautauqua County
Field Sec 16 - 32S - 9E Well DJK 1A-16-32 9H

Installation Data						
Name	Latitude	Longitude	Northing	Easting		
Chautauqua County	N37 15 30.76	W96 25 17.71	222284.00	2606162.00		
Coordinate System						
Kansas State Planes, Southern Zone						
Slot Data						
Name	North (ft)	East (ft)	Latitude	Longitude	Northing	Easting
DJK 1A-16-32 9H	242.00 N	-1307.00 E	N37 15 33.44	W96 25 17.81	222526.00	2604855.00
Elevation Data						
Slot - Mean Sea Level (ft)	Mean Sea Level - Mudline/Ground level (ft)			Slot - Mudline/Ground level (ft)		
0.00	0.00			0.00		

WELL PROFILE DATA

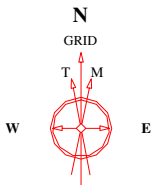
Point	MD	Inc	Azi	TVD	North	East	deg/100ft	V. Sect
Tie on	0.00	0.00	0.00	0.00	0.00	0.00	0.00	0.00
KOP	1756.00	0.00	0.00	1756.00	0.00	0.00	0.00	0.00
Target 50° Point	2282.31	50.00	358.59	2218.00	215.38	-5.29	9.50	215.44
Target End 50°	2382.31	50.00	358.59	2282.28	291.96	-7.17	0.00	292.05
Target Casing Point	2473.36	58.54	358.59	2335.40	365.78	-8.98	9.37	365.89
Target Landing Point	2808.03	90.00	358.59	2425.00	683.79	-16.80	9.40	684.00
T.D. & Target BHL	5423.03	90.00	358.59	2425.00	3298.00	-81.00	0.00	3299.00

TARGET DATA

MD	Inc	Azi	TVD	North	East	Name	Position
2282.31	50.00	358.59	2218.00	215.38	-5.29	50° Point	2604849.71 East : 222741.37 North
2382.31	50.00	358.59	2282.28	291.96	-7.17	End 50°	2604847.83 East : 222817.96 North
2473.36	58.54	358.59	2335.40	365.78	-8.98	Casing Point	2604846.02 East : 222891.78 North
2808.03	90.00	358.59	2425.00	683.79	-16.80	Landing Point	2604838.20 East : 223209.79 North
5423.03	90.00	358.59	2425.00	3298.00	-81.00	BHL	2604774.00 East : 225824.00 North

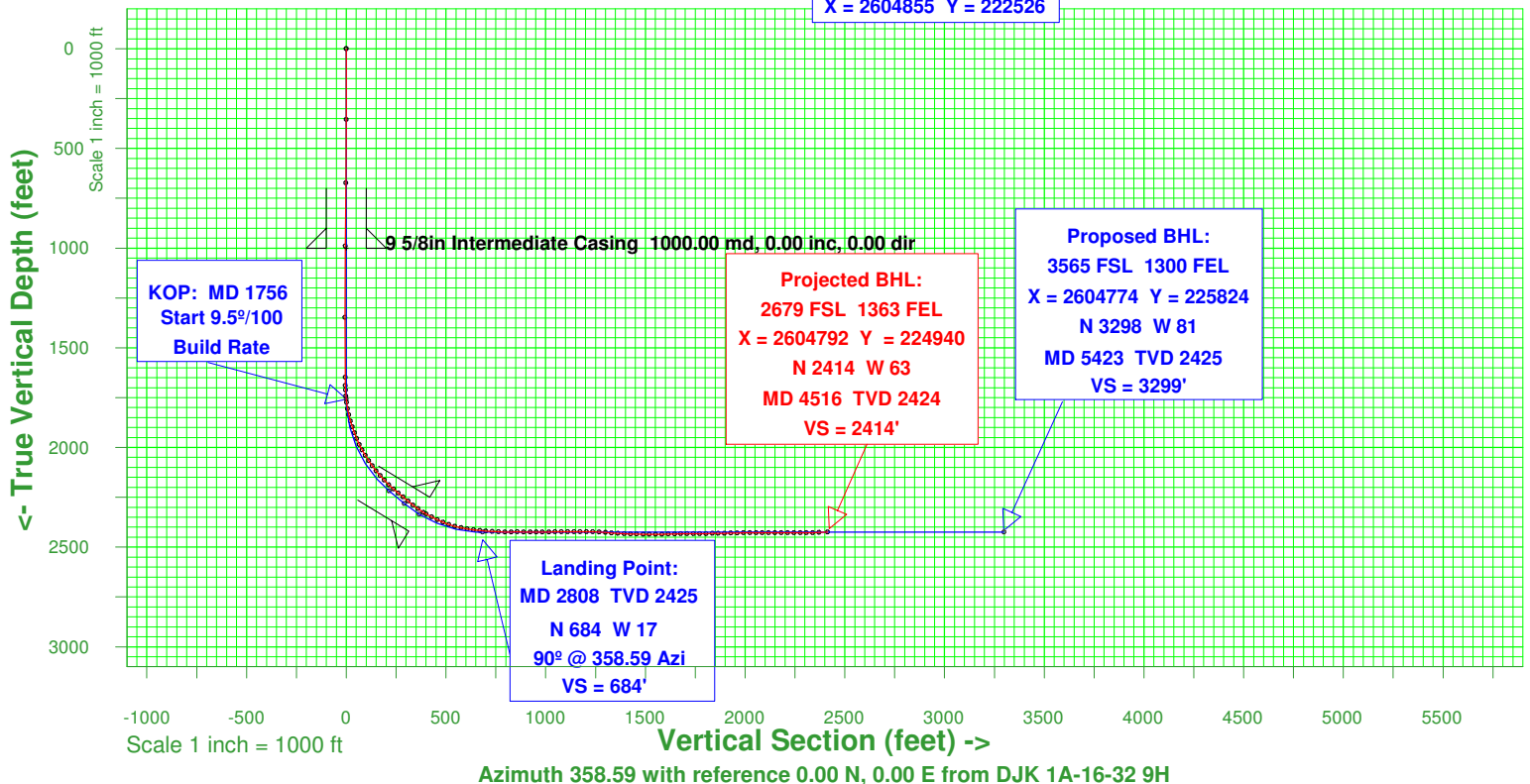
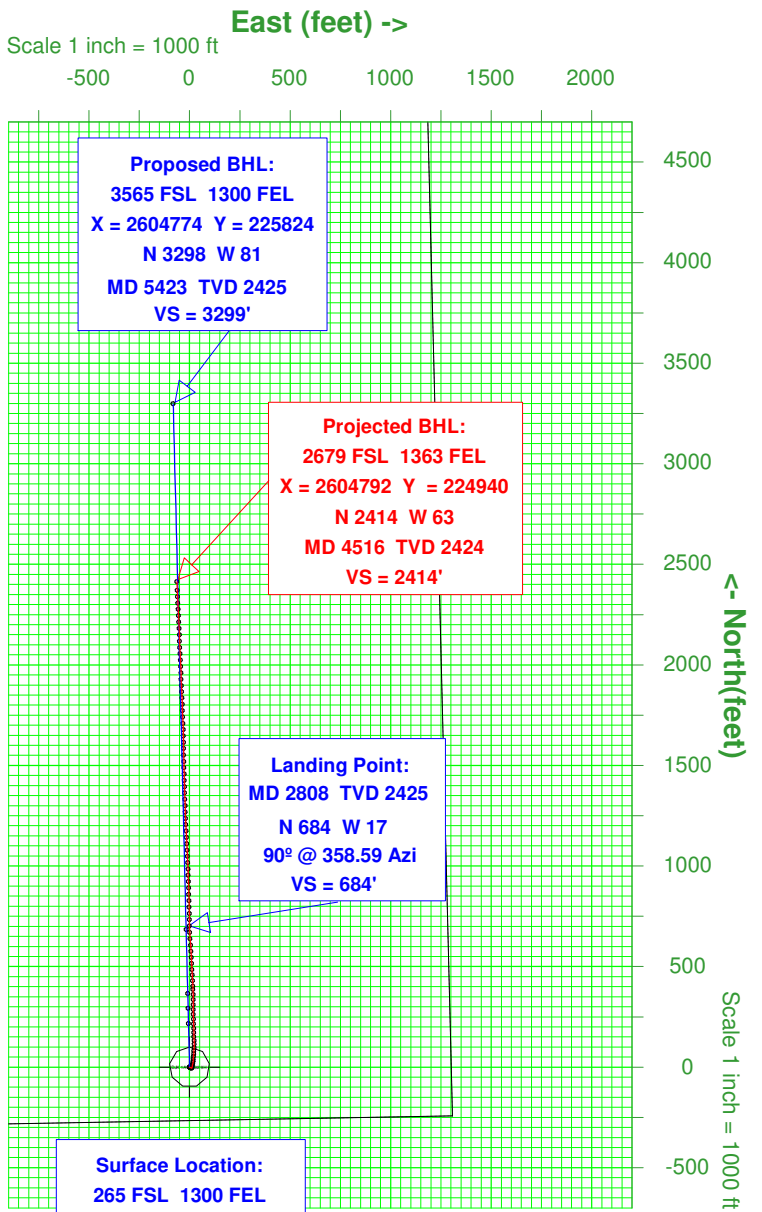


9630 Pole Rd.
Oklahoma City, OK 73160
Tel: (405) 604-2969



29-Dec-2011
IGRF Model [1900.0-2015.0] Dip: 65.57 deg Field: 52088.4 nT
Magnetic North is 3.59 deg East of True North
GRID North is 1.28 deg East of True North
To correct azimuth from True to GRID subtract 1.28 deg
To correct azimuth from Magnetic to GRID add 2.31 deg

Created by admin
Date plotted 16-Jan-2012
Plot reference is DJK 1A-16-32 9H (Plan).
Ref wellpath is DJK 1A-16-32 9H (PWP#1).
Coordinates are in feet reference DJK 1A-16-32 9H.
True Vertical Depths are reference DJK 1A-16-32 9H.
Measured Depths are reference Slot.
Plot North is aligned to GRID North.



Azimuth 358.59 with reference 0.00 N, 0.00 E from DJK 1A-16-32 9H