

KEVIN L. KESSLER

CONSULTING PETROLEUM GEOLOGIST

(316) 522-7338

OPERATOR : ABERCROMBIE ENERGY, LLC
LEASE : AYERS
LOCATION : 575 FSL & 475 FWL
SEC: 13
COUNTY : NESS

WELL # : 2 - 13
TWP : 19 S
RGE : 26 W
STATE : KANSAS

CONTRACTOR : VAL RIG # 2
COMM: 10 / 15 / 2012
RTD : 4655
SAMPLES SAVED FROM : 3800
GEOLOGICAL SUPERVISION FROM : 3800
MUD UP : 3700

COMP : 10 / 25 / 2012
LOG TD : 4647
TO: RTD
TO : RTD
TYPE MUD : CHEMICAL

ELEVATION
KB : 2621
GL : 2611

MEASUREMENTS FROM
KB

CASING RECORD
SURFACE :
8 5/8" @ 280'
PRODUCTION :

ELECTRICAL SURVEYS:

FORMATION	LOG		SAMPLE	DATUM	STRUCT. COMP.
	TOP	DATUM			
HEEBNER	3932	-1311	3925	-1304	-01
LANSING	3972	-1351	3962	-1341	-02
STARK	4232	-1611	4224	-1603	FLAT
BASE/KC	4306	-1685	4300	-1679	+02
FORT SCOTT	4492	-1871	4484	-1863	+01
CHEROKEE	4514	-1893	4504	-1883	+01
MISSISSIPPI	4604	-1983	4599	-1978	-10

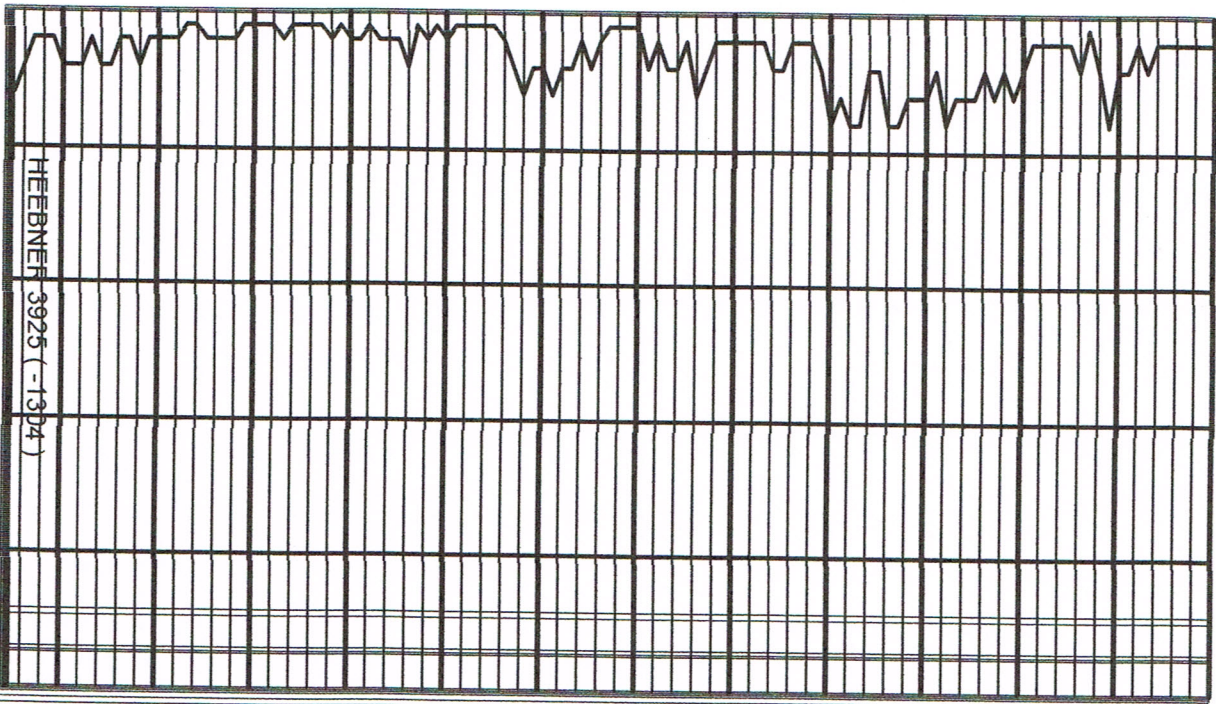
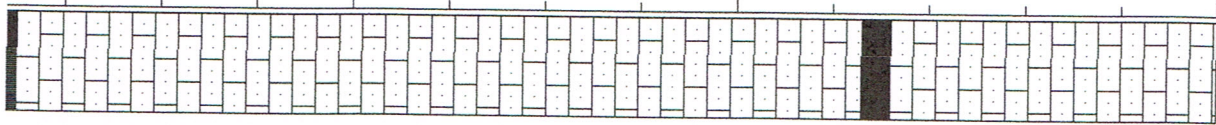
RAG
MICRO
SONIC

REFERENCE WELL FOR STRUCTURAL COMPARISON :

3800

3850

3900



HEEBNER 3925 (-13D4)

LST: CRM - TAN - GRAY
 FXTAL SUBCHKY - CHKY
 ARENACEOUS IN PART
 MINOR OOLITES NO VIS.
 POR. NSO
 LST: A. A. FR AMT GRAY
 SHALE NO VIS POR. NSO

LST: CRM - TAN FXTAL CHKY
 OOLITIC IN PART SOFT
 MINOR BLACK CARB. SHALE
 NO VIS. POR. NSO

LST: CRM - TAN - GRAY
 FXTAL SOFT CHKY OOLITIC
 SANDY IN PART PR - FR
 INTRPRT POR NSO

LST: A. A. ARENACEOUS IN
 PART PR VIS. INTRPRT POR.
 NSO

LST: A.A. NSO

LST: CHKY SOFT OOLITIC IN
 PART AREN. PR VIS. POR.
 NSO

LST: A. A. NSO

MUD CHECK @ 3850
 V/S: 45
 WWT: 8.8

3950

MUD CHECK @ 3950
VIS: 46
WT: 9.0

LANSING 3962 (13.1)

SHALE: BLACK CARB W/FR
AMT DNSE MICRITIC LST.
NO VIS. POR. NSO

SHALE: GRAY CALC.

LST: WHT - CRM FXTAL
SUBCHKY - DNSE FOSS IN
PART MINOR CHERT NO VIS.
[POR. NSO

SHALE: GRAY CALC.

LST: WHT - CRM FXTAL SUB
CHKY - DNSE FOSS IN PART
TRCE OOLITE NO VIS. POR
NSO

LST: A. A. W/FR AMT GRAY
CALC. SHALE NO VIS. POR.
NSO

LST: DNSE HARD WHT - CRM
FXTAL NO VIS. POR. NSO

SHALE: DRK GRAY FISSILE
IN PART

LST: CRM - GRAY FXTA
SUBCHKY - DNSE MINOR
OOLITE NO VIS POR. NSO
SHALE: GRAY NSO

LST: CRM - WHITE FXTAL
DNSE BLOCKY MINOR FOSS
MICRITIC IN PART NO VIS.
POR. NSO

SHALE: BLACK CARB. NSO

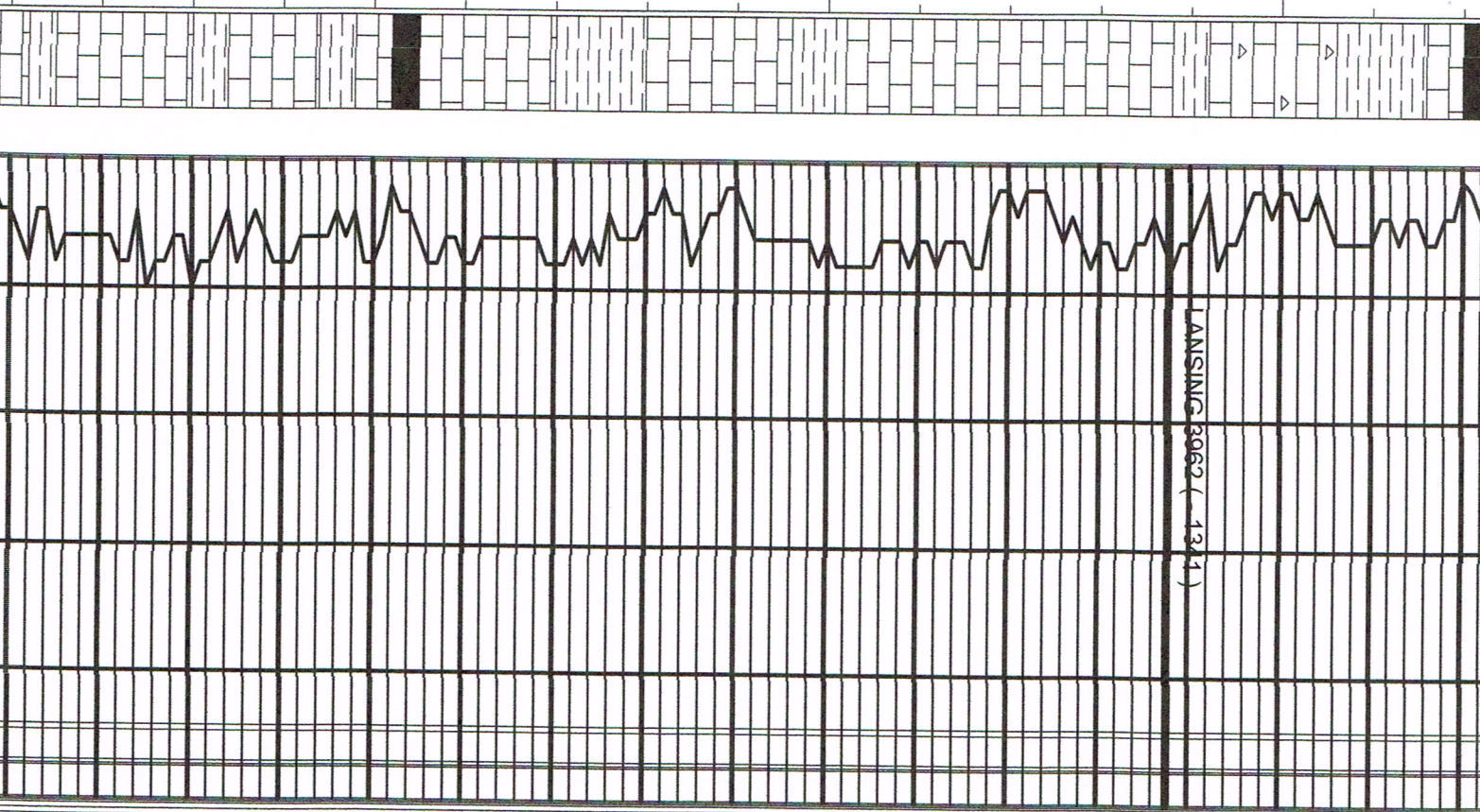
MUD CHECK @ 4050
VIS: 48
WT: 9.1

LST: CRM - GRAY FXTAL
SUBCHKY - DNSE SLI FOSS
NO VIS. POR. NSO
SHALE: GRAY

LST: CRM - TAN FXTAL DNSE
HARD NO VIS. POR. NSO

4000

4050



4100

LST: WHT - CRM FXTAL
SUBCHKY - DNSE FOSS IN
PART MINOR OOLITE PR -
FR INTRPRT POR NSO

LST: DNSE BLOCKY NO VIS.
POR. NSO

LST: A. A. NO VIS. POR NSO

LST: CRM - GRAY FXTAL
SUBCHKY - DNSE FOSS IN
PART NO VIS. POR. NSO
SHALE : DARK GRAY CALC.
NSO

LST: CRM - GRAY - WHITE
FXTAL SUBCHKY - DNSE
HARD RARE FOSS NO VIS.
POR NSO

SHALE: GRAY

LST: WHT - CRM FXTAL SUB
CHKY - DNSE FR AMT FOSS
PR - FR VIS. INTRPRT POR.
NSO

LST: GRAY DNSE BLOCKY
NO VIS. POR. NSO

LST: CRM - GRAY FXTAL
DNSE BLOCKY RARE FOSS
NO VIS. POR. NSO

LST: WHITE - CRM - GRAY
OOLICATIC IN PART VRY GD
OOLICAST POR. NSO

SHALE: BLACK CARB.

LST: CRM - GRAY FXTAL
CHKY IN PART FOSS. FR -
GD INTRPART POR. NSO
LST: A. A. FR VIS. POR. NSO

4150

MUD CHECK @ 4150

VIS: 47

WT: 9.2

4200

STARK 4224 (-1603)

4250

MUD CHECK @ 4250

VIS: 50

SHALE: BLACK CARB. NSO

LST: CRM - GRAY FXTAL
SOFT CHKY FOSS IN PART
PR INTRPART POR. NSO

LST: A. A. NO VIS. POR. NSO

LST: A. A. NO VIS. POR. NSO

A. A. BECOMMING SHLY &
SNDY NO VIS. POR. NSO

LST: CRM - GRAY FXTAL
SUBCHKY - DNSE AREN. IN
PART FR AMT SHALE GRAY -
GRN, RED-BRN NO VIS.
POR. NSO

LST: A. A. W/ FR AMT RED -
BRN SHALE EARTHY IN
PART NO VIS. POR. NSO

LST: TAN - BRN FXTAL
MICRITIC IN PART FR AMT
BRN ARGIL. SHALE NO VIS.
POR. NSO

LST: TAN - BRN DNSE HARD
MICRITIC IN PART. ABUND
RED - BRN ARGIL. SHALE NO
VIS. POR. NSO

SHALE: TAN - BRN
ARGILACEOUS EARTHY NSO

LST: CRM - GRAY FXTAL
DNSE BLOCKY NO VIS. POR
NSO

LST: CRM - GRAY FXTAL
DNSE HARD SLI FOSS NO
VIS. POR. NSO

LST: A. A. W/ GRAY SHALE

LST: CRM - GRAY FXTAL
DNSE BLOCKY RARE FOSS
NO VIS. POR. NSO

4300

BASE/KC 4300 (-1679)

4350

MUD CHECK @ 4350
VIS: 50
WT: 9.1

4400

4450

SHALE: GRAY CALC. NSO
LST: CRM - GRAY FXTAL
DNSE BLOCKY MASSIVE
RARE FOSS. NO VIS. POR.
NSO

LST: A. A. VRY DNSE
BLOCKY NO VIS. POR. NSO

MUD CHECK @ 4450
VIS: 52
WT: 9.3

DST # 1 (4460 - 4510)

REC: 60' SGOCM 35% OIL

IFP: 23 - 30#

ISIP: 507#

FFP: 31 - 39#

FSIP: 825#

SHALE: BLACK CARB.

FORT SCOTT (4484 (-1863))

LST: CRM - TAN - BRN FXTAL
DNSE OOLITIC IN PART FR
AMT DOLOMITIC WITH FSFO
FR ODOR SCATT SUBSAT -
SAT LT BRN STN PR - FR
INTRXTAL POR.

SHALE: BLACK CARB.

CHEROKEE (4504 (-1833))

LST: CRM - GRAY FXTAL
DNSE MOTTLED W/ FR AMT
GRAY - DRK GRAY CALC.
SHALE NO VIS. POR. NSO

LST: A. A. W/INTRBEDDED
GRAY SHALE NO VIS. POR.
NSO

PIPE STRAP @ 4510
STRAP LONG 0.62'

DST # 2 (4530 - 4596)

REC: 3' MUD

IFP: 26 - 24#

ISIP: 100#

FFP: 27 - 23#

FSIP: 44#

LST: A. A. SHLY IN PART NO
VIS. POR. NSO

LST: CRM - GRAY A. A. NO
VIS. POR. NSO SHLY IN
PART

MUD CHECK @ 4550
VIS: 55
WT: 9.3

DST# 3 (4526 - 4601)

REC: 5' CO

85' HOOCM 40% OIL

IFP: 29 - 41#

ISIP: 975#

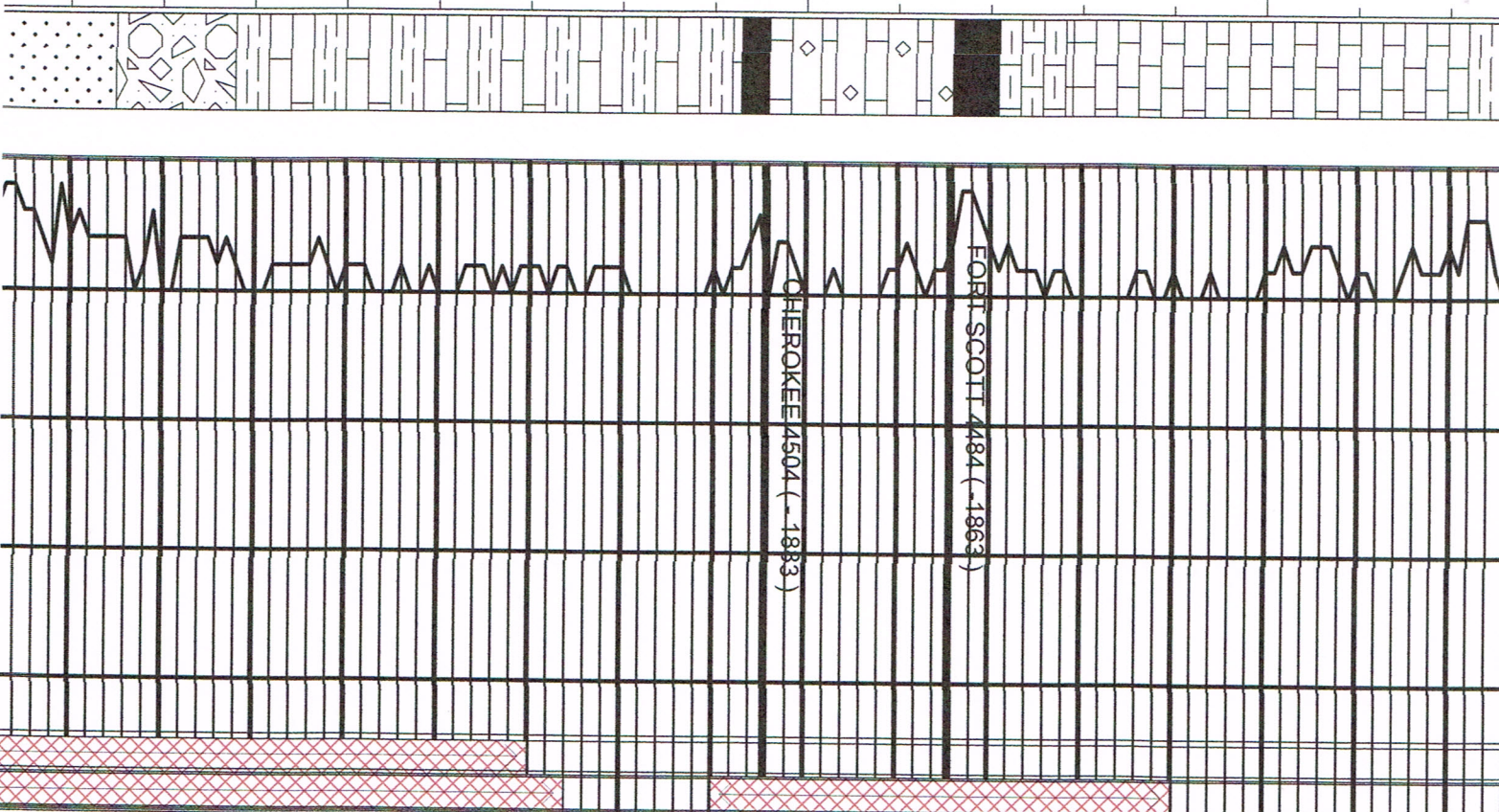
FFP: 42 - 69#

FSIP: 961#

SAND: QTZ FN GRND WELL
ROUND WELL SORTED
TIGHT CLUST FR AMT

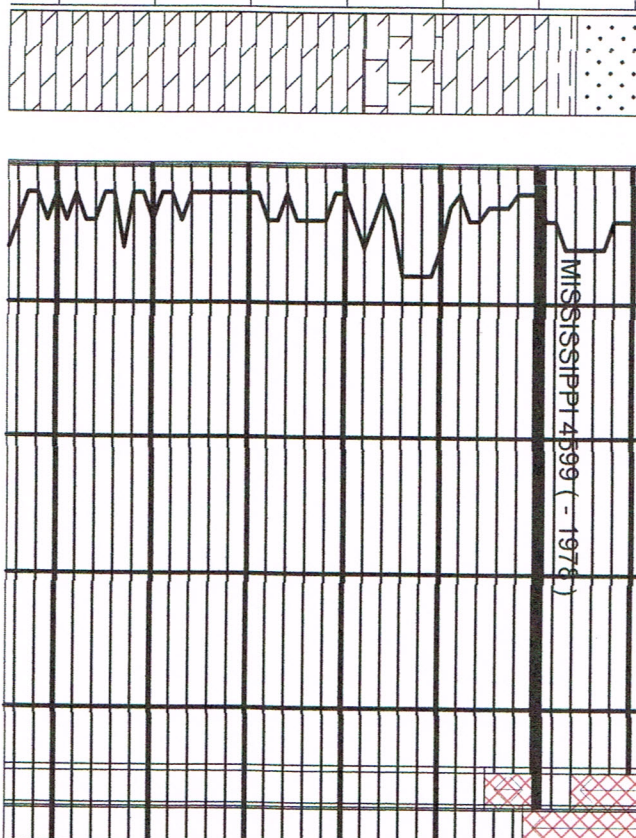
4550

4500



4600

4650



ODOR ABUND. SAT LT - MED
 BRN STN PR FR INTRGRAN
 POR.

DOLO: CRM - TAN FXTAL
 DNSE SUCROSIC IN PART
 FR - GD SFO GD ODOR

GSSY ABUND SUBSAT - SAT
 LT - MED BRN STN FR - GD
 VUGGY POR.

DOLO: CRM - GRAY FXTAL
 DNSE HARD SUCROSIC FR
 AMT DOLOMITIC LST. TIGHT
 DNSE FR AMT W/ GD VUGG
 & INTXTAL POR. NSO

DOLO: A. A. NSO

A. A. NSO

DST # 4 (4600 - 4605)

REC: 2 CO

543' MCW SSO

CHL: 28000PPM

IFP: 26 - 102#

ISIP: 950#

FFP: 104 - 282#

FSIP: 908#

MUD CHECK @ 4650

VIS: 55

WT: 9.3

RTD = 4655 LTD = 4647

COMMENTS:

**DUE TO NON COMMERCIAL RECOVERIES OF OIL OR GAS
THIS WELL WILL BE COMPLETED AS A SWDW
IN THE CEDER HILLS SAND STONE**

KEVIN L. KESSLER