



OIL FIELD SURVEYORS

BOX 8604 - PRATT, KS 67124  
(620) 672-6491

1030122

INVOICE NO.

N-10 EXPLORATION LLC

OPERATOR

8

NO.

MEDICINE RIVER RANCH D

FARM

Barber

COUNTY

10

S

34s

T

11w

R

2970' FSL & 400' FEL

LOCATION

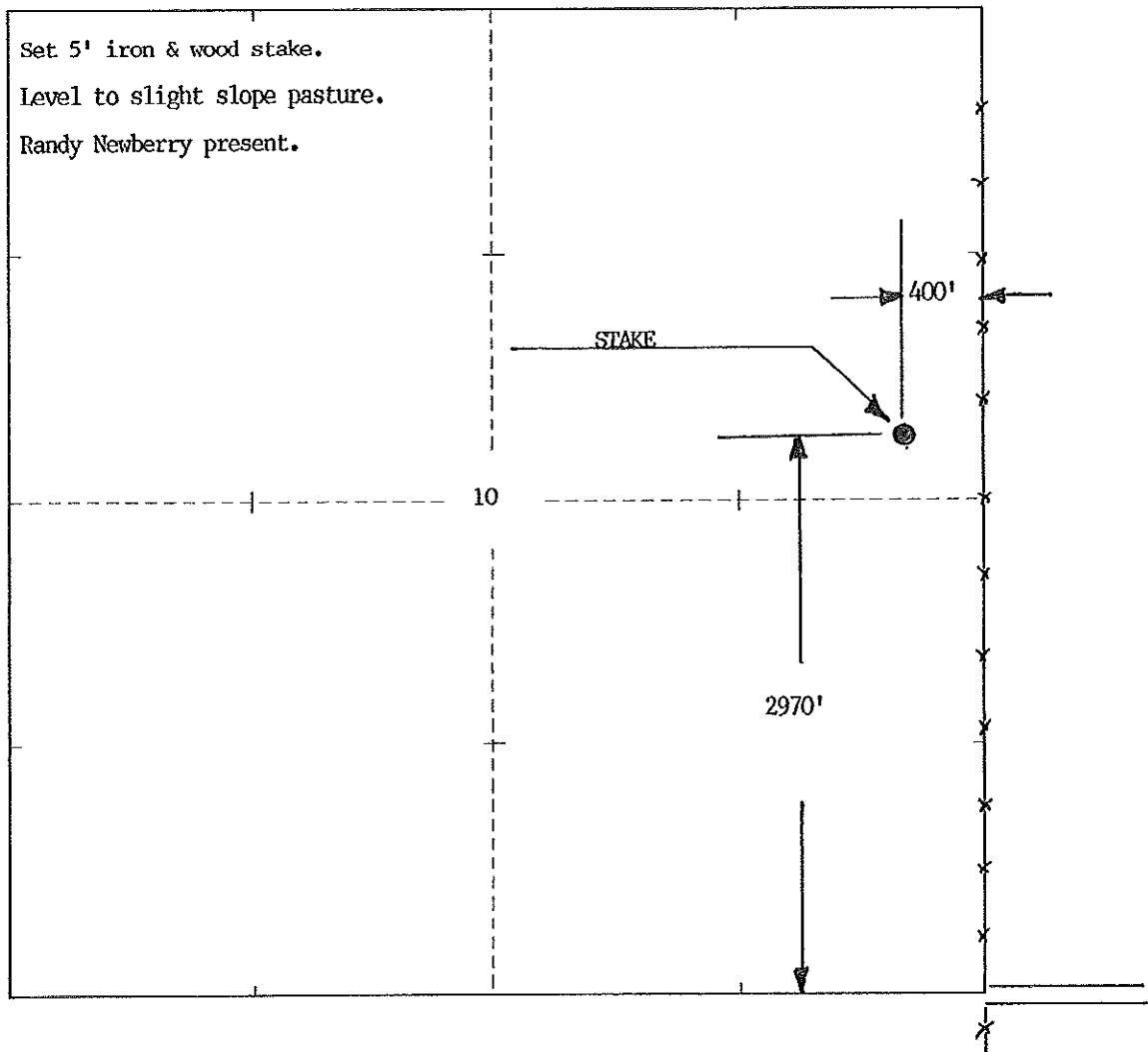
ELEVATION: 1372' GR



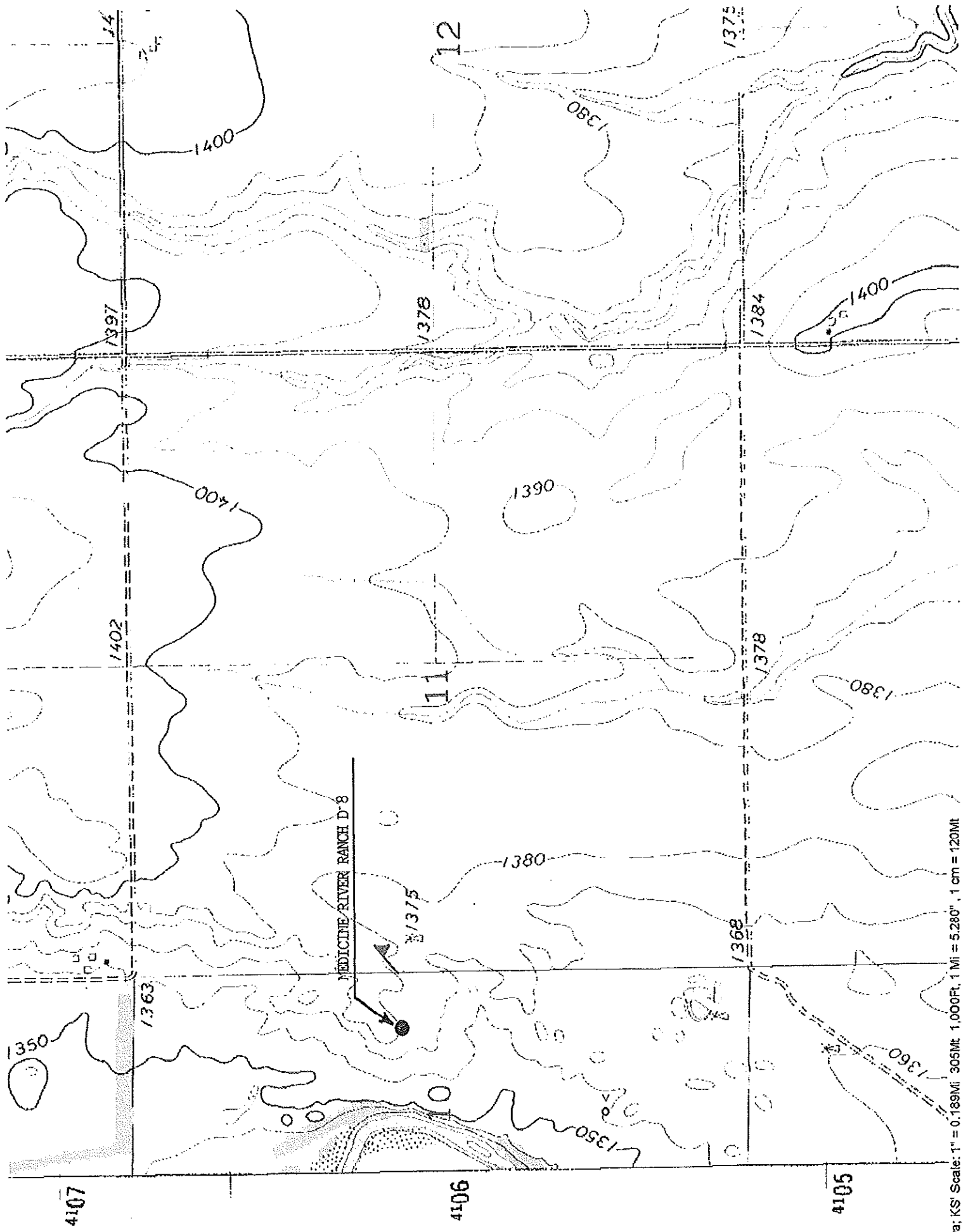
N-10 EXPLORATION LLC  
PO Box 195  
Attica, KS 67009-0195

AUTHORIZED BY: Randy Newberry

SCALE: 1" = 1000'



DATE STAKED: 10/31/2012



'Kowa; KS' Scale: 1" = 0.189Mi, 305Mt, 1,000Ft, 1 Mi = 5.280", 1 cm = 120Mt