



Scale 1:240 (5"=100') Imperial
Measured Depth Log

Well Name: RAY #1
Location: NW SE SE SE SECTION 30 23S 23W
License Number: 34317, API# 15-083-21847
Spud Date: 9/29/2012
Surface Coordinates: 590' FROM SOUTH LINE OF SECTION
420' FROM EAST LINE OF SECTION
Bottom Hole Coordinates: 590' FROM SOUTH LINE OF SECTION
420' FROM EAST LINE OF SECTION
Ground Elevation (ft): 2438' K.B. Elevation (ft): 2451'
Logged Interval (ft): 3900' To: 4820' Total Depth (ft): 4820'
Formation: MISSISSIPPI
Type of Drilling Fluid: CHEMICAL, ANDY'S MUD
Region: HODGEMAN CO. KS.
Drilling Completed: 10/8/2012

Printed by WellSight Log Viewer from WellSight Systems 1-800-447-1534 www.WellSight.com

OPERATOR

Company: BEXEXCO
Address: 2020 NORTH BRAMBLEWOOD
WICHITA, KANSAS 67206

GEOLOGIST

Name: DAVID GOULD (LOGGER)
Company: DMT COMPANY
Address: 532 SUNRISE
PRATT, KANSAS 67124

Comments

DRILLING CONTRACTOR:
BEREDCO RIG #2

TESTING:
TRILOBITE TESTING

LOGS:
LOG TECH, DUAL INDUCTION, COMPENSATED NEUTRON DENSITY AND MICRO

SURVEY'S
310' 0
1518' 1/4
3402' 1/4
4376' 1/4
4664' 1/4
4820'

DAILY STATUS:
9/28/2012 RIG UP, DRILL SURFACE HOLE (310')
9/29/2012 RUN SURFACE CASING (295') WOC, DRILL AHEAD TO 929'
9/30/2012 2200' DRILL AHEAD
10/1/2012 2978' DRILL AHEAD
10/2/2012 3476' DRILL AHEAD
10/3/2012 4125' DRILL AHEAD
10/4/2012 4526' DRILL AHEAD
10/5/2012 4695' DST #1
10/6/2012 4706' DST #2
10/7/2012 4820' TRIP OUT FOR LOGS

Well Name & No.: Ray #1 Company: Berexco Test No.: 1 Interval Tested: 4689 – 4695

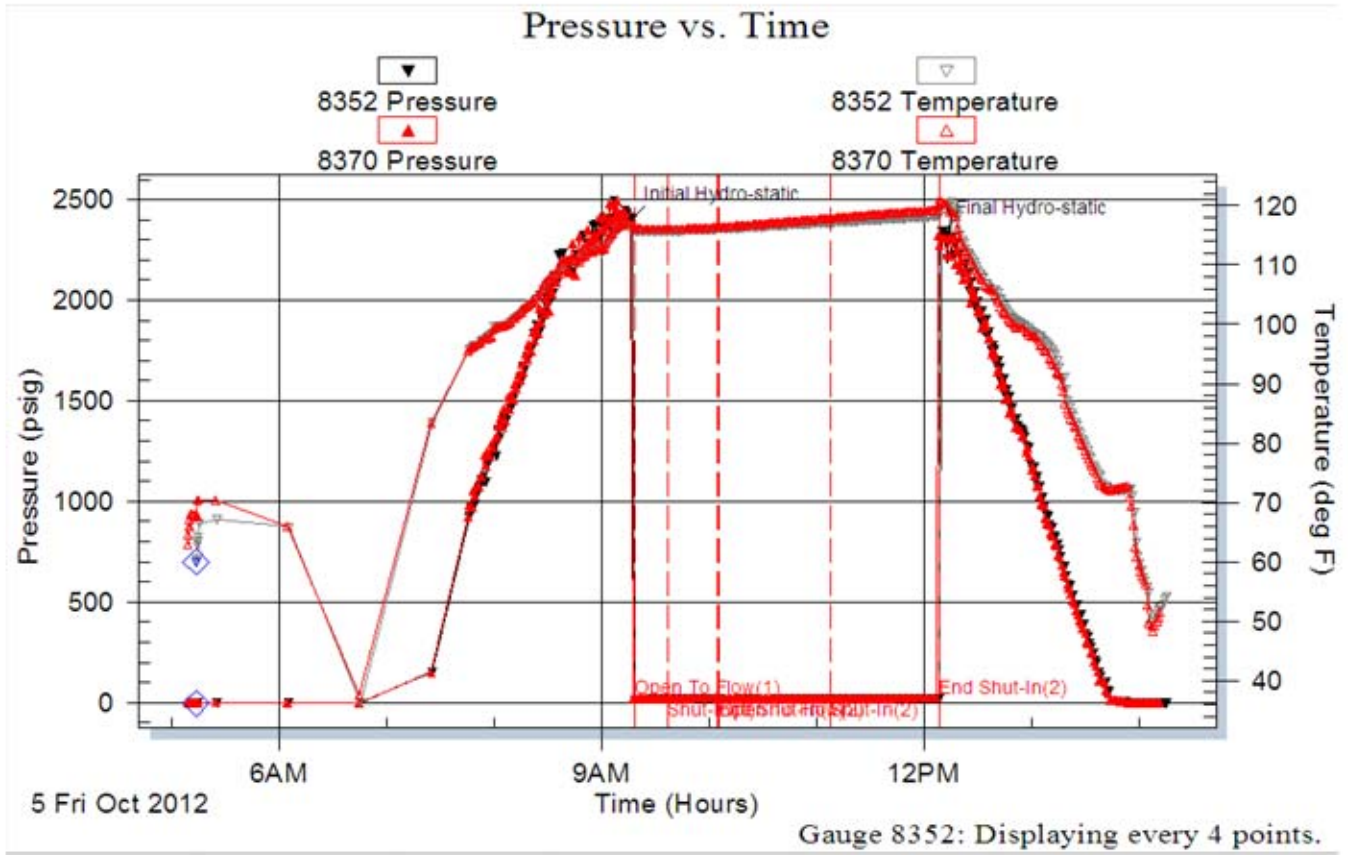
Zone Tested: Cherokee Times: 15-30-60-60

Blow Description: IFP: Week blow ¼" or less Dead in 15 Min. ISI: No blow back FFP: No blow FSI: No blow back

Rec: 1 Feet of Drilling Mud, Rec. Total: 1', BHT: 118

Initial Hydrostatic: 2404 First Initial Flow: 15 First Final Flow: 16 Initial Shut-In: 22

Second Initial Flow: 16 Second Final Flow: 16 Final Shut-In: 20 Final Hydrostatic: 2340



Well Name & No.: Ray #1 Company: Berexco Test No.: 2 Interval Tested: 4689 – 4706

Zone Tested: Cherokee Times: 15-30-60-90

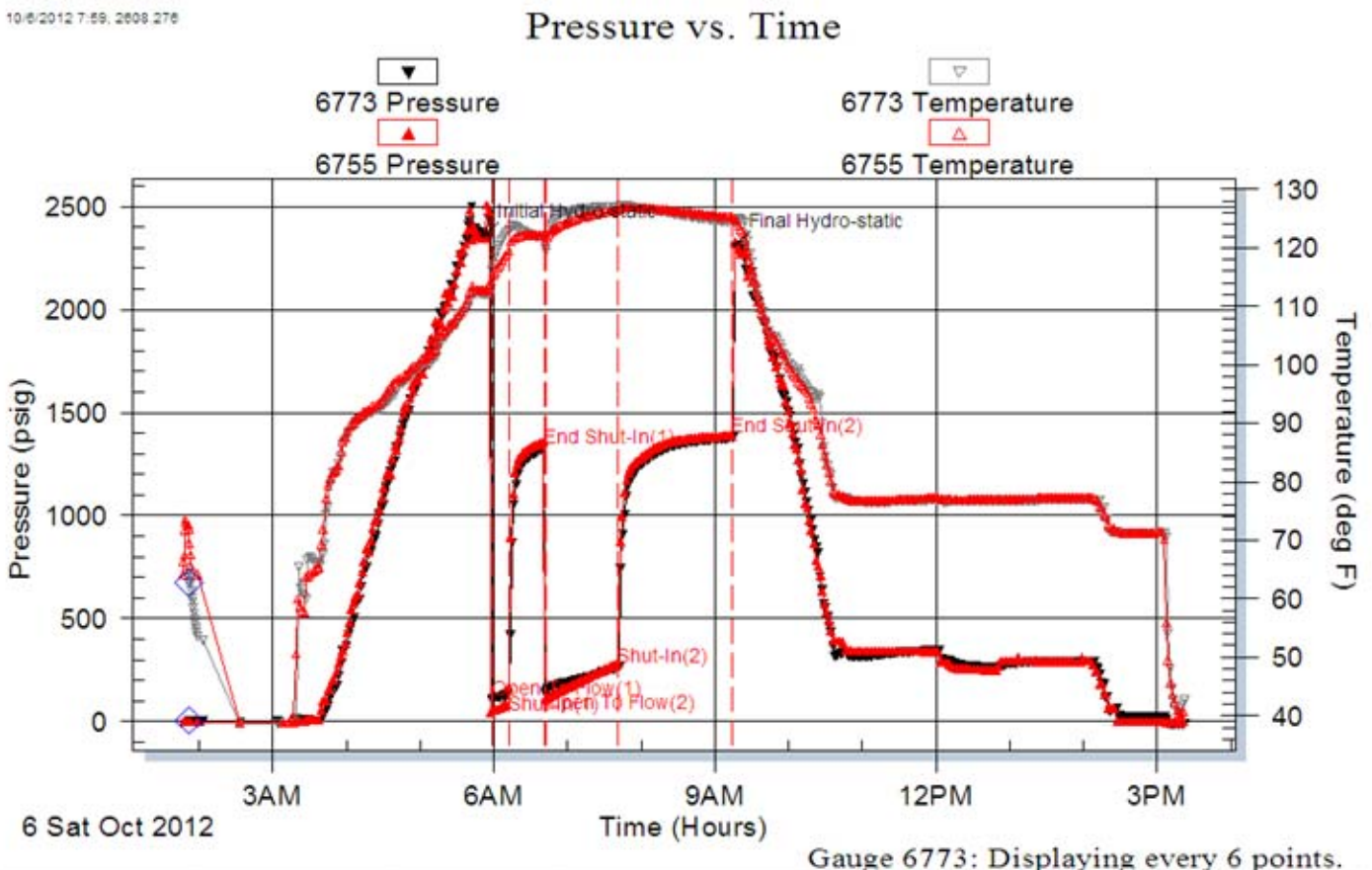
Blow Description: IFP: Strong blow BOB 6 Min. ISI: Weak 3" blow back FFP: Strong blow BOB 4 Min. FSI: Weak 3 ½" blow back

Rec: 520 Feet of oil, 100% oil, 90' M.O, 60% oil, 40% mud Rec. Total: 610', BHT: 130, Gravity: 46


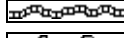
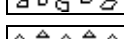

Initial Hydrostatic: 2360 First Initial Flow: 107 First Final Flow: 137 Initial Shut-In: 1326





Second Initial Flow: 148 Second Final Flow: 265 Final Shut-In: 1378 Final Hydrostatic: 2310





10/6/2012 7:59, 2008 276

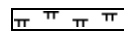

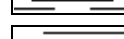



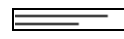


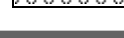
ROCK TYPES

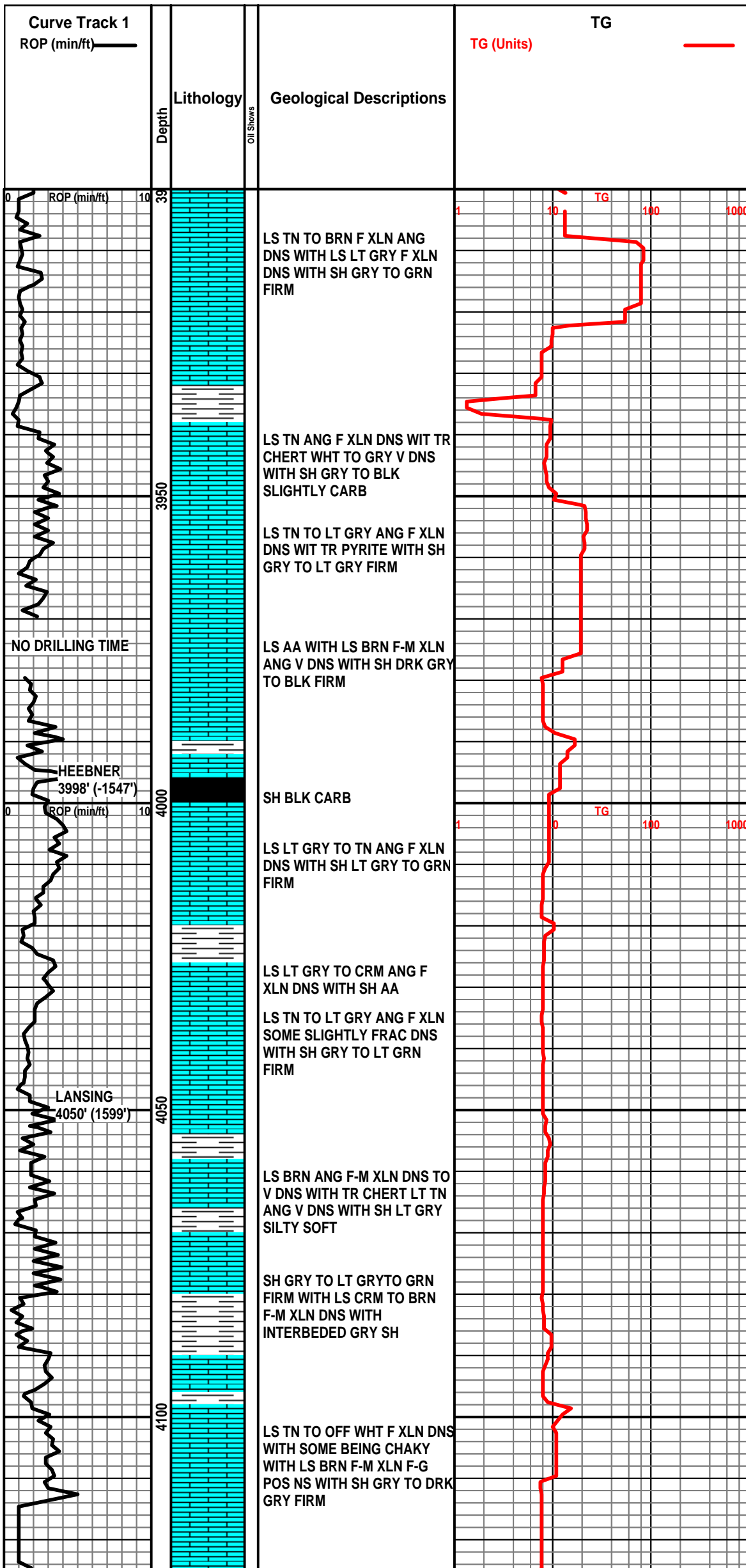
-  Anhy
-  Bent
-  Brec
-  Cht

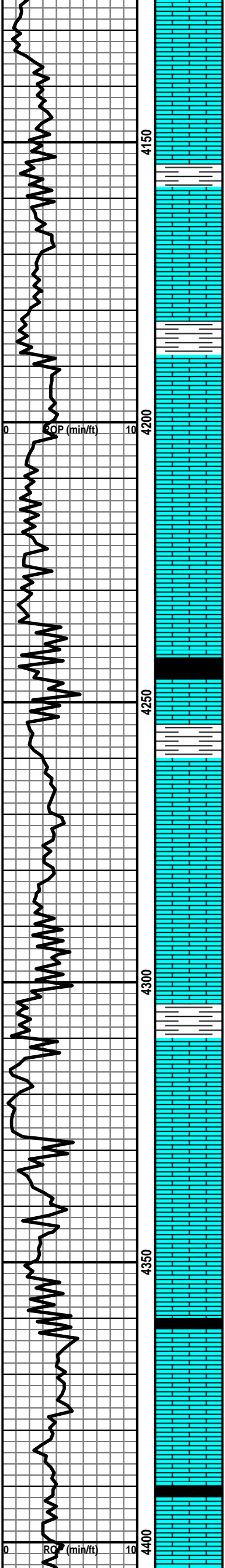
-  Clyst
-  Coal
-  Congl
-  Dol

-  Gyp
-  Igne
-  Lmst
-  Meta

-  Mrlst
-  Salt
-  Shale
-  Shcol

-  Shgy
-  Sltst
-  Ss
-  Till





SAME AA WITH TR CHERT
WHT ANG SHARP V DNS

LS TN ANG F XLN F-G POS NS
N FLOR N CUT WIT SH BLK
SOFT

LS TN TO LT GRY ANG F XLN
N VISUAL POR NS WITH TR
PYRITE WITH SH GRY TO LT
GRY FIRM

LS TN AA WITH SOME HAVING
V-G PIN POR NS WITH SH GRY
ANG FIRM

LS TN ANG F XLN DNS TO V
DNS NS WITH TR CHERT

LS AA WITH LS LT GRY F XLN
DNS WITH SOME LS CRM TO
OFF WHT CHAKY WIT CHERT
WHT TO TN V DNS WITH SH LT
TO DRK GRY FIRM

LS TN TO LT GRY AA WITH SH
DRK GRY TO BLK SOME
BEING CARB

LS TN TO LT GRY ANG F XLN
DNS WITH LS TN TO CRM VF
XLN CHALKY SOFT WITH SH
GRY FIRM

LS TN TO LT GRY ANG F XLN
DNS TO V DNS WITH TR
CHERT LT TN TO LT GRY ANG
SHARP V DNS

LS TN TO BRN M XLN VUGGY
FOSS ANG DNS TO V DNS NS
WITH TR PYRITE

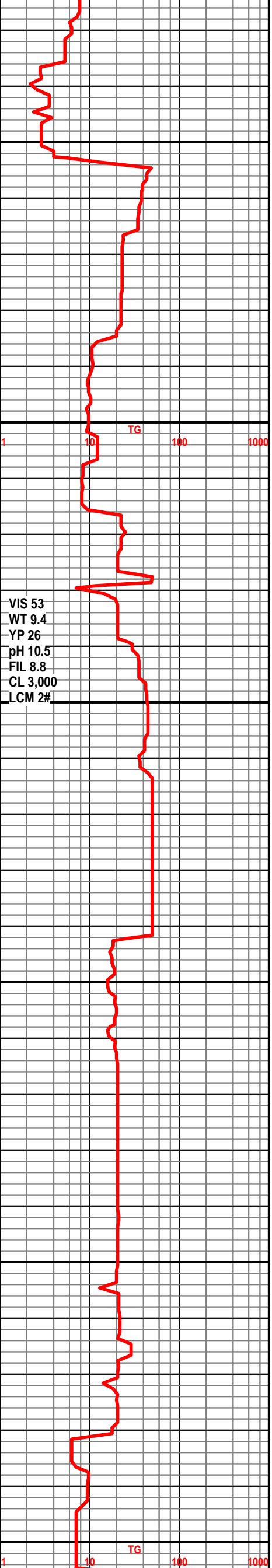
LS LT TN F XLN ANG G OOLIC
POR N FLOR N CUT NS WITH
LS WHT CHAKY

LS TN TO BRN ANG F-M XLN
DNS NS

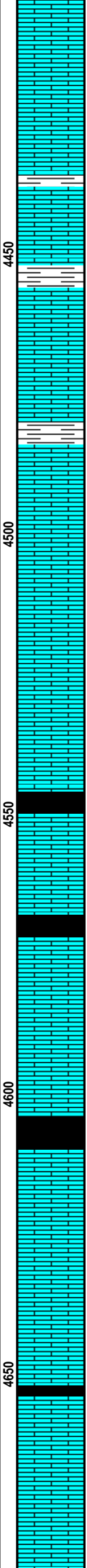
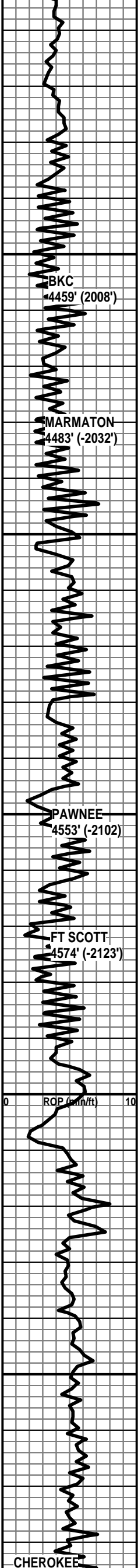
SH BLK CARB

LS BRN TO TN ANG F-M XLN
VUGGY NS

LS BRN ANG F-M XLN
SLIGHTLY FRAC OOLICASTIC
DNS NS WITH SH BLK CARB



VIS 53
WT 9.4
YP 26
pH 10.5
FIL 8.8
CL 3,000
LCM 2#



LS TN TO BRN ANG F-M XLN V DNS NS WITH CHERT DRK BRN TO BLK SHARP ANG V DNS

LS BRN TO LT GRY ANG F-M XLN NO POR NS WITH SH DRK GRY FIRM

LS DRK GRY ANG F-M XLN DNS WITH SH AA WITH TR PYRITE

LS BRN TO DRK BRN M XLM DNS SOME SLIGHTLY CHERTY NS

SH DRK GRY TO GRN FIRM WITH LS TN TO LT GRY F XLN ANG SLIGHTLY CHAKY NS

LS MOSTLY TN ANG F XLN SOME CHAKY WITH LS BRN ANG F XLN DNS

LS AA

LS AA WITH SH DRK GRY TO BLK SOME CARB WITH INTERBEDDED PYRITE

SH BLK CARB

LS CRM TO TN TO BRN F XLN DNS TO V DNS SOME P POR NS WITH SH AA

LS CRM TO TN F XLN DNS TO V DNS NS

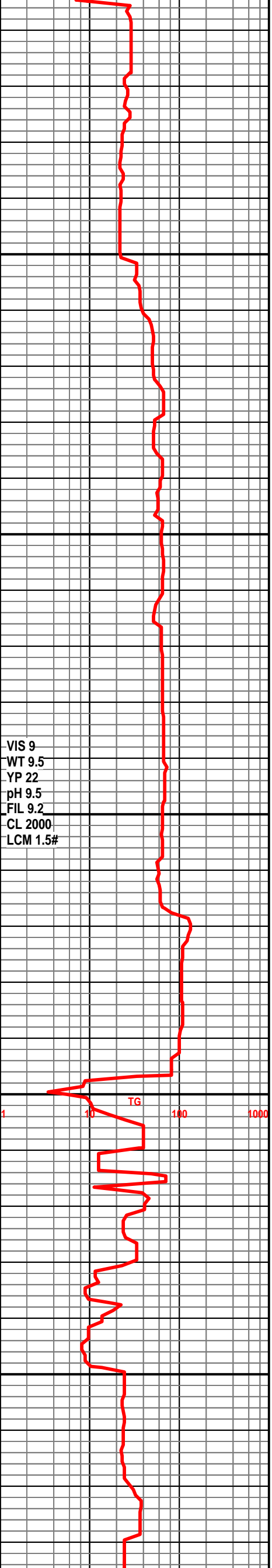
SH BLK CARB

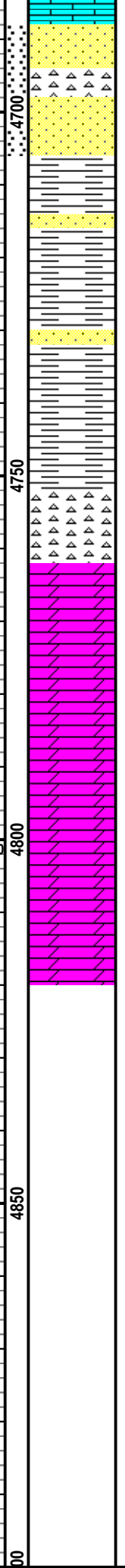
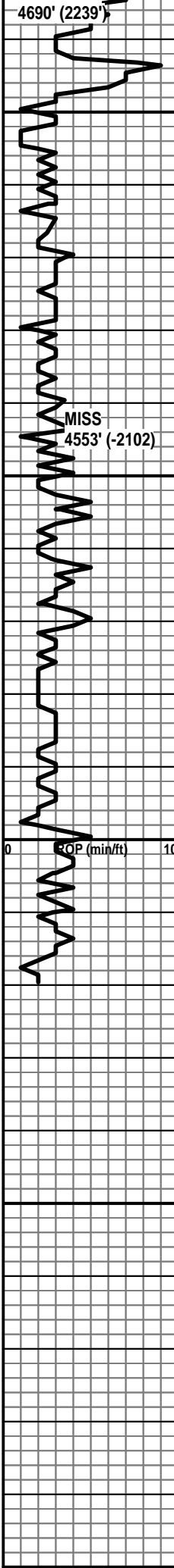
LS TN ANG F XLN V DNS NS WITH TR CHART TN TO LT TN SHARP V DNS

SH BLK CARB

LS TN TO BRN F XLN DNS SLIGHTLY VUGGY NS

LS TN TO LT GRY F XLN SLIGHTLY CHERTY SOME BEING OOLICASTIC NS





SS WHT SUB RD TO SUB ANG
F TO FV GR P SORTED TIGHT
G ODOR G FLOR G CUT G
STAIN FREE OIL WITH CHERT
WHT G OIL STAIN G FLOR G
CUT N FREE OIL
SS CLEAR TO LT TN M-C GR
SOME FRI OIL STAIN LAZY TO
DEAD OIL G ODOR G FLOR G
CUT LOTS OF LOOSE GR IN
PAN WITH INTERBEDDED
PYRITE IN CLUSTERS
SS CLEAR TO TN M TO C GR
SLIGHT OIL STAIN F FLOR N
CUT N ODOR WITH SH DRK
GRN TO DRK GRY FIRM

SH GRY TO DRK GRY TO GRN
FIRM

CHERT WHT TO YELLOW TO
TN SHARP V DNS V SLIGHT
STAIN N ODOR N FLOR NS
WITH CHERT WHT TO OFF
WHT WEATHERED F POR NS

DOL LT GRN TO LT GRY F XLN
F-P POR NS

DOL LT GRY TO TN F XLN ANC
NS

DOL LT GRY TO TN F XLN ANC
F-G POR DNS NS

DOL GRK GRY ANG F XLN
ANG DNS TO V DNS NS

