



**TRILOBITE  
TESTING, INC**

# DRILL STEM TEST REPORT

Berexco LLC  
2020 N. Bramblewood  
Wichita Ks.67206  
ATTN: David Gould

**17-23s-21w Hodgeman Ks**  
**Gleason#1-17**  
Job Ticket: 49607      **DST#: 1**  
Test Start: 2012.09.21 @ 08:09:43

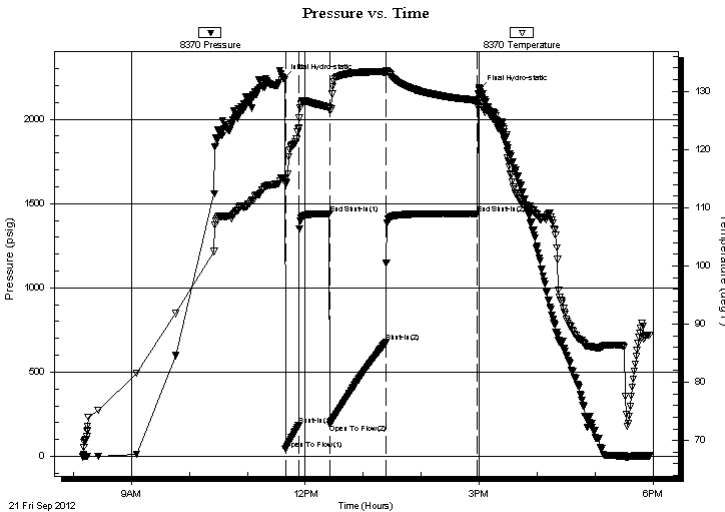
## GENERAL INFORMATION:

Formation: **Miss.**  
Deviated: No Whipstock: 7.87 ft (KB)  
Time Tool Opened: 11:39:13  
Time Test Ended: 17:55:43  
Interval: **4598.00 ft (KB) To 4640.00 ft (KB) (TVD)**  
Total Depth: 4640.00 ft (KB) (TVD)  
Hole Diameter: inches Hole Condition: Poor  
Test Type: Conventional Bottom Hole (Initial)  
Tester: Gary Pevoteaux  
Unit No: 56  
Reference Elevations: 2346.00 ft (KB)  
2333.00 ft (CF)  
KB to GR/CF: 13.00 ft

**Serial #: 8370      Inside**  
Press @ Run Depth: 679.09 psig @ 4599.00 ft (KB)      Capacity: 8000.00 psig  
Start Date: 2012.09.21      End Date: 2012.09.21      Last Calib.: 2012.09.21  
Start Time: 08:09:48      End Time: 17:55:43      Time On Btm: 2012.09.21 @ 11:37:43  
Time Off Btm: 2012.09.21 @ 14:59:58

**TEST COMMENT:** IF: Strong blow . B.O.B. in 8 mins.  
IS: No blow .  
FF: Strong blow . B.O.B. in 8 - 9 mins.  
FS: No blow .

## PRESSURE SUMMARY



Time (Min.)	Pressure (psig)	Temp (deg F)	Annotation
0	2239.30	115.13	Initial Hydro-static
2	43.66	114.06	Open To Flow (1)
16	185.97	123.74	Shut-In(1)
48	1440.21	127.14	End Shut-In(1)
48	192.01	126.68	Open To Flow (2)
106	679.09	133.30	Shut-In(2)
200	1440.37	128.41	End Shut-In(2)
203	2172.59	128.77	Final Hydro-static

## Recovery

Length (ft)	Description	Volume (bbl)
160.00	WM 45%w 55%m	2.24
185.00	MW 37%m 63%w	2.60
1150.00	SW /Rw .96ohms @87deg	16.13

## Gas Rates

	Choke (inches)	Pressure (psig)	Gas Rate (Mcf/d)



**TRILOBITE  
TESTING, INC**

# DRILL STEM TEST REPORT

**FLUID SUMMARY**

Berexco LLC  
2020 N. Bramblewood  
Wichita Ks.67206  
ATTN: David Gould

**17-23s-21w Hodgeman Ks**  
**Gleason#1-17**  
Job Ticket: 49607      **DST#: 1**  
Test Start: 2012.09.21 @ 08:09:43

## Mud and Cushion Information

Mud Type: Gel Chem	Cushion Type:	Oil API:	deg API
Mud Weight: 9.00 lb/gal	Cushion Length: ft	Water Salinity:	66000 ppm
Viscosity: 39.00 sec/qt	Cushion Volume: bbl		
Water Loss: 11.99 in <sup>3</sup>	Gas Cushion Type:		
Resistivity: 0.00 ohm.m	Gas Cushion Pressure: psig		
Salinity: 6000.00 ppm			
Filter Cake: 0.20 inches			

## Recovery Information

Recovery Table

Length ft	Description	Volume bbl
160.00	WM 45%w 55%m	2.244
185.00	MW 37%m 63%w	2.595
1150.00	SW /Rw .96ohms @87deg	16.131

Total Length: 1495.00 ft      Total Volume: 20.970 bbl  
Num Fluid Samples: 0      Num Gas Bombs: 0      Serial #: none  
Laboratory Name:      Laboratory Location:  
Recovery Comments:

### Pressure vs. Time

