



**TRILOBITE
TESTING, INC.**

DRILL STEM TEST REPORT

Prepared For: **Charles N Griffin**

PO Box 347
Pratt KS 67214

ATTN: Bruce Reed

Randels B #3

34-32s-12w Barber,KS

Start Date: 2012.02.21 @ 17:40:00

End Date: 2012.02.22 @ 03:18:45

Job Ticket #: 45756 DST #: 1

Trilobite Testing, Inc

PO Box 362 Hays, KS 67601

ph: 785-625-4778 fax: 785-625-5620

ORIGINAL

Printed: 2012.02.24 @ 15:55:51

Charles N Griffin

34-32s-12w Barber,KS

Randels B #3

DST # 1

Simpson Sand

2012.02.21



**TRILOBITE
TESTING, INC**

DRILL STEM TEST REPORT

Charles N Griffin
PO Box 347
Pratt KS 67214
ATTN: Bruce Reed

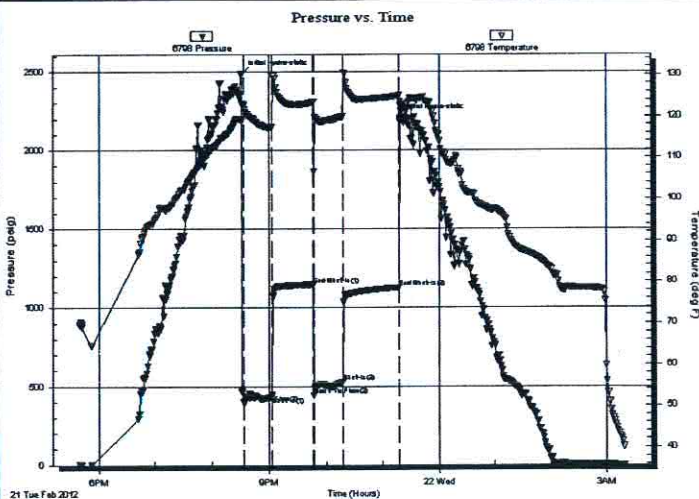
34-32s-12w Barber, KS
Randels B #3
Job Ticket: 45756 DST#: 1
Test Start: 2012.02.21 @ 17:40:00

GENERAL INFORMATION:

Formation: **Simpson Sand**
Deviated: No Whipstock: ft (KB)
Time Tool Opened: 20:33:15
Time Test Ended: 03:18:45
Interval: **4767.00 ft (KB) To 4800.00 ft (KB) (TVD)**
Total Depth: **4800.00 ft (KB) (TVD)**
Hole Diameter: **7.88 inches** Hole Condition: Fair
Test Type: Conventional Bottom Hole (Initial)
Tester: Randy Williams
Unit No: 45
Reference Elevations: 1553.00 ft (KB)
1548.00 ft (CF)
KB to GR/CF: 5.00 ft

Serial #: 6798 Inside
Press@RunDepth: 529.62 psig @ 4768.00 ft (KB) Capacity: 8000.00 psig
Start Date: 2012.02.21 End Date: 2012.02.22 Last Calib.: 2012.02.22
Start Time: 17:40:01 End Time: 03:18:45 Time On Btm: 2012.02.21 @ 20:31:00
Time Off Btm: 2012.02.21 @ 23:17:45

TEST COMMENT: IF- 30-SBB, GTS in 10 min
IS-45- BB
FF-30-SBB, GTS
FSI-60-BB



PRESSURE SUMMARY

Time (Min.)	Pressure (psig)	Temp (deg F)	Annotation
0	2488.76	118.71	Initial Hydro-static
3	396.41	122.58	Open To Flow (1)
32	434.26	117.27	Shut-In(1)
76	1147.68	123.36	End Shut-In(1)
76	440.85	106.56	Open To Flow (2)
107	529.62	119.82	Shut-In(2)
166	1127.70	124.95	End Shut-In(2)
167	2204.81	123.40	Final Hydro-static

Recovery

Length (ft)	Description	Volume (bbl)
888.00	GASSY OIL, 30% G, 70% O	9.63
124.00	GASSY MUDDY OIL, 15% G, 50% O, 35% W	1.74

Gas Rates

	Choke (inches)	Pressure (psig)	Gas Rate (Mcf/d)
First Gas Rate	0.75	50.00	1007.48
Last Gas Rate	0.75	70.00	1319.88
Max. Gas Rate	0.75	70.00	1319.88



**TRILOBITE
TESTING, INC**

DRILL STEM TEST REPORT

TOOL DIAGRAM

Charles N Griffin

34-32s-12w Barber, KS

PO Box 347
Pratt KS 67214

Randels B #3

Job Ticket: 45756

DST#: 1

ATTN: Bruce Reed

Test Start: 2012.02.21 @ 17:40:00

Tool Information

Drill Pipe:	Length: 4453.00 ft	Diameter: 3.80 inches	Volume: 62.46 bbl	Tool Weight: 2100.00 lb
Heavy Wt. Pipe:	Length: 0.00 ft	Diameter: 0.00 inches	Volume: 0.00 bbl	Weight set on Packer: 20000.00 lb
Drill Collar:	Length: 310.00 ft	Diameter: 2.25 inches	Volume: 1.52 bbl	Weight to Pull Loose: 76000.00 lb
			<u>Total Volume: 63.98 bbl</u>	Tool Chased 0.00 ft
Drill Pipe Above KB:	23.00 ft			String Weight: Initial 64000.00 lb
Depth to Top Packer:	4767.00 ft			Final 71000.00 lb
Depth to Bottom Packer:	ft			
Interval between Packers:	33.00 ft			
Tool Length:	60.00 ft			
Number of Packers:	2	Diameter: 6.75 inches		

Tool Comments:

Tool Description

Tool Description	Length (ft)	Serial No.	Position	Depth (ft)	Accum. Lengths
Shut In Tool	5.00			4745.00	
Hydraulic tool	5.00			4750.00	
Jars	5.00			4755.00	
Safety Joint	2.00			4757.00	
Packer	5.00			4762.00	27.00 Bottom Of Top Packer
Packer	5.00			4767.00	
Stubb	1.00			4768.00	
Recorder	0.00	6798	Inside	4768.00	
Recorder	0.00	8367	Outside	4768.00	
Perforations	29.00			4797.00	
Bullnose	3.00			4800.00	33.00 Bottom Packers & Anchor
Total Tool Length:	60.00				



**TRILOBITE
TESTING, INC**

DRILL STEM TEST REPORT

FLUID SUMMARY

Charles N Griffin

34-32s-12w Barber,KS

PO Box 347
Pratt KS 67214

Randels B #3

Job Ticket: 45756

DST#: 1

ATTN: Bruce Reed

Test Start: 2012.02.21 @ 17:40:00

Mud and Cushion Information

Mud Type:	Gel Chem	Cushion Type:		Oil API:	deg API
Mud Weight:	9.00 lb/gal	Cushion Length:	ft	Water Salinity:	4000 ppm
Viscosity:	61.00 sec/qt	Cushion Volume:	bbl		
Water Loss:	8.78 in ³	Gas Cushion Type:			
Resistivity:	ohm.m	Gas Cushion Pressure:	psig		
Salinity:	4000.00 ppm				
Filter Cake:	7.00 inches				

Recovery Information

Recovery Table

Length ft	Description	Volume bbl
888.00	GASSY OIL, 30% G, 70% O	9.632
124.00	GASSY MUDDY OIL, 15% G, 50% O, 35% M	1.739

Total Length: 1012.00 ft Total Volume: 11.371 bbl

Num Fluid Samples: 0

Num Gas Bombs: 0

Serial #:

Laboratory Name:

Laboratory Location:

Recovery Comments: API= 22 @ 70 DEG-F



**TRILOBITE
TESTING, INC.**

DRILL STEM TEST REPORT

GAS RATES

Charles N Griffin

34-32s-12w Barber, KS

PO Box 347
Pratt KS 67214

Randels B #3

Job Ticket: 45756

DST#: 1

ATTN: Bruce Reed

Test Start: 2012.02.21 @ 17:40:00

Gas Rates Information

Temperature: 59 (deg F)
Relative Density: 0.65
Z Factor: 0.8

Gas Rates Table

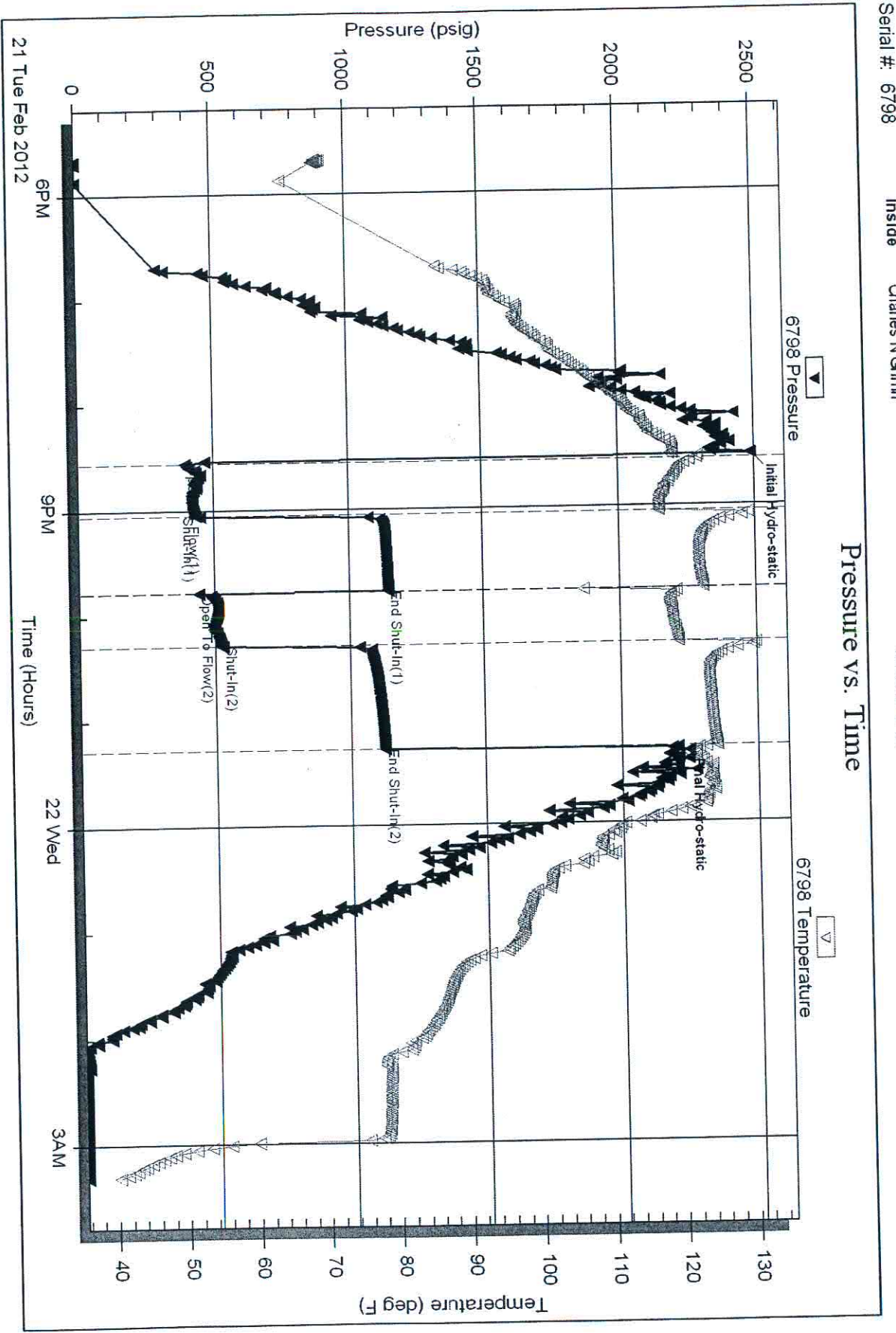
Flow Period	Elapsed Time	Choke (inches)	Pressure (psig)	Gas Rate (Mcf/d)
1	10	0.75	50.00	1007.48
1	10	0.75	50.00	1007.48
1	20	0.75	50.00	1007.48
1	30	0.75	53.00	1054.34
2	10	0.75	56.00	1101.20
2	20	0.75	70.00	1319.88

Serial #: 6798 Inside Charles N Griffin

Randels B #3

DST Test Number: 1

Pressure vs. Time





TRILOBITE TESTING INC.

P.O. Box 1733 • Hays, Kansas 67601

RECEIVED
FEB 23 2012

Test Ticket

NO. 45756

BY: _____

Well Name & No. RANDELS B #3 Test No. 1 Date 2-21-12
 Company CHARLES N. GRIFFIN Elevation 1553 KB 1548 GL
 Address P.O. BOX 347 PRATT KS 67124
 Co. Rep / Geo. BRUCE REED Rig H2 #3
 Location: Sec. 34 Twp. 32 S Rge. 12 W Co. BARBER State KS

Interval Tested 4767 - 4800 Zone Tested ~~4767-4800~~ SIMPSON SAND
 Anchor Length 33 Drill Pipe Run 4453 Mud Wt. 9.3
 Top Packer Depth 4762 Drill Collars Run 310 Vis 61
 Bottom Packer Depth 4767 Wt. Pipe Run NA WL 8.8
 Total Depth 4800 Chlorides 4,000 ppm System LCM 7 II

Flow Description IF - SBB, GAS TO SURFACE 10 MIN'S INTO OPEN GAS REPORT
SI - BB
IF - SBB, GAS TO SURFACE, GAS REPORT
SI - BB

Feet of	%gas	%oil	%water	%mud
<u>888</u> Feet of <u>GASSY OIL</u>	<u>30</u>	<u>70</u>		
<u>124</u> Feet of <u>GASSY MUDDY OIL</u>	<u>15</u>	<u>50</u>		<u>35</u>
Feet of _____	%gas	%oil	%water	%mud
Feet of _____	%gas	%oil	%water	%mud
Feet of _____	%gas	%oil	%water	%mud

Total 1012 BHT 131 Gravity _____ API RW 22 @ 70 ° F Chlorides _____ ppm

Initial Hydrostatic 2,489 Test 1225 T-On Location 16:00
 First Initial Flow 396 Jars 250 T-Started 17:30
 First Final Flow 434 Safety Joint 75 T-Open 20:31
 Initial Shut-In 1,148 Circ Sub _____ T-Pulled 22:16
 Second Initial Flow 441 Hourly Standby 1 1/4 hr 125 T-Out 03:15
 Second Final Flow 530 Mileage 86 RTP 120.40 Comments _____
 Final Shut-In 1,128 Sampler _____
 Final Hydrostatic 2,205 Straddle _____

Initial Open 30 Ruined Shale Packer _____
 Initial Shut-In 45 Ruined Packer 320
 Initial Flow 30 Extra Copies _____
 Initial Shut-In 60 Extra Recorder _____ Sub Total 320
 Total 2115.40
 Sub Total 1795.40 MP/DST Disc't _____

Approved By Bruce A. Reed Our Representative Randy Williams

TriLOBITE Testing Inc. shall not be liable for damaged or any kind of the property or personnel of the one for whom a test is made, or for any loss suffered or sustained, directly or indirectly, through the use of its equipment, or its statements or opinion concerning the results of any test, tools lost or damaged in the hole shall be paid for at cost by the party for whom the test is made.



12/08

TRILOBITE TESTING INC.

P.O. Box 1733 • Hays, Kansas 67601

Gas Volume Report

CHARLES N. GRIFFIN

Operator

RANDELS B #3

Well Name and No.

#7

DST No.

1ST OPEN

2ND OPEN

Min.	Ins. of Water PSIG	Orifice Size	CF/D	Min.	Ins. of Water PSIG	Orifice Size	CF/D
0	50	.75	939000.00	10	70	.75	1,226,700.00
10	53	.75	982000.00	20	50	1.00	1,664,100.00
30	56	.75	1,023,700.00	30	42	1.00	1,457,700.00

Remarks: