



**TRILOBITE
TESTING, INC.**

DRILL STEM TEST REPORT

White Exploration Inc
2400 Woodlaw n Ste 115
Wichita KS 67220
ATTN: Tom Robinson

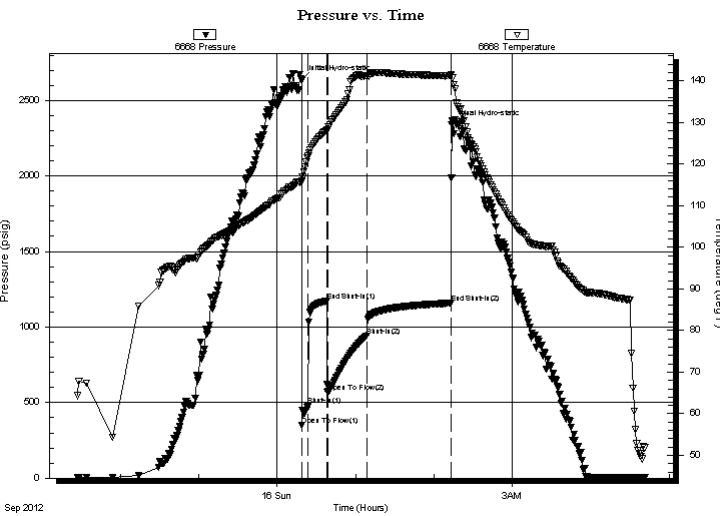
22-18S-28W-Wichita
Oldham #1
Job Ticket: 50015 **DST#: 1**
Test Start: 2012.09.15 @ 21:26:54

GENERAL INFORMATION:

Formation: **Lower Morrow Sand**
Deviated: No Whipstock: ft (KB) Test Type: Conventional Bottom Hole (Initial)
Time Tool Opened: 00:18:54 Tester: Tate Lang
Time Test Ended: 04:41:09 Unit No: 65
Interval: 5055.00 ft (KB) To 5100.00 ft (KB) (TVD) Reference Elevations: 3405.00 ft (KB)
Total Depth: 5100.00 ft (KB) (TVD) 3394.00 ft (CF)
Hole Diameter: 7.88 inches Hole Condition: Fair KB to GR/CF: 11.00 ft

Serial #: 6668 Outside
Press @ Run Depth: 943.47 psig @ 5061.00 ft (KB) Capacity: 8000.00 psig
Start Date: 2012.09.15 End Date: 2012.09.16 Last Calib.: 2012.09.16
Start Time: 21:27:09 End Time: 04:41:09 Time On Btm: 2012.09.16 @ 00:18:24
Time Off Btm: 2012.09.16 @ 02:13:24

TEST COMMENT: IF-B.O.B. in 1 1/2mins.
ISI-Bled Off For 5mins- Weak Surface Blow Built to 1/4in. And Stayed
FF-B.O.B. in 1 1/2mins.
FSI-Bled Off For 5mins- Dead No Return Blow



PRESSURE SUMMARY

Time (Min.)	Pressure (psig)	Temp (deg F)	Annotation
0	2634.92	115.63	Initial Hydro-static
1	350.65	115.88	Open To Flow (1)
6	480.99	122.03	Shut-In(1)
20	1172.31	128.21	End Shut-In(1)
20	569.38	128.29	Open To Flow (2)
50	943.47	141.19	Shut-In(2)
115	1157.95	141.17	End Shut-In(2)
115	2341.32	141.37	Final Hydro-static

Recovery

Length (ft)	Description	Volume (bbl)
1953.00	2%M 98%W	25.25
365.00	40%W 60%M	5.12
0.00	2300 GIP	0.00

Gas Rates

Choke (inches)	Pressure (psig)	Gas Rate (Mcf/d)



**TRILOBITE
TESTING, INC.**

DRILL STEM TEST REPORT

FLUID SUMMARY

White Exploration Inc

22-18S-28W-Wichita

2400 Woodlaw n Ste 115
Wichita KS 67220

Oldham #1

Job Ticket: 50015

DST#: 1

ATTN: Tom Robinson

Test Start: 2012.09.15 @ 21:26:54

Mud and Cushion Information

Mud Type: Gel Chem

Cushion Type:

Oil API:

deg API

Mud Weight: 9.00 lb/gal

Cushion Length:

ft

Water Salinity:

32000 ppm

Viscosity: 63.00 sec/qt

Cushion Volume:

bbbl

Water Loss: 7.97 in³

Gas Cushion Type:

Resistivity: ohm.m

Gas Cushion Pressure:

psig

Salinity: 2200.00 ppm

Filter Cake: 1.00 inches

Recovery Information

Recovery Table

Length ft	Description	Volume bbl
1953.00	2%M 98%W	25.255
365.00	40%W 60%M	5.120
0.00	2300 GIP	0.000

Total Length: 2318.00 ft Total Volume: 30.375 bbl

Num Fluid Samples: 0

Num Gas Bombs: 0

Serial #:

Laboratory Name:

Laboratory Location:

Recovery Comments: 10# LCM in the hole. No sampler run

Pressure vs. Time

