



## DRILL STEM TEST REPORT

Prepared For: **RJM Company**

Po box 256 Claflin Kansas  
67525

ATTN: Jim Musgrove

**Pam Wirth #1**

**24-18s-11w-Barton**

Start Date: 2012.09.22 @ 11:06:00

End Date: 2012.09.22 @ 16:11:00

Job Ticket #: 17271                      DST #: 2

Superior Testers Enterprises LLC  
PO Box 138 Great Bend KS 67530  
1-800-792-6902

Printed: 2012.09.23 @ 02:29:38



# DRILL STEM TEST REPORT

RJM Company  
 Po box 256 Claflin Kansas  
 67525  
 ATTN: Jim Musgrove

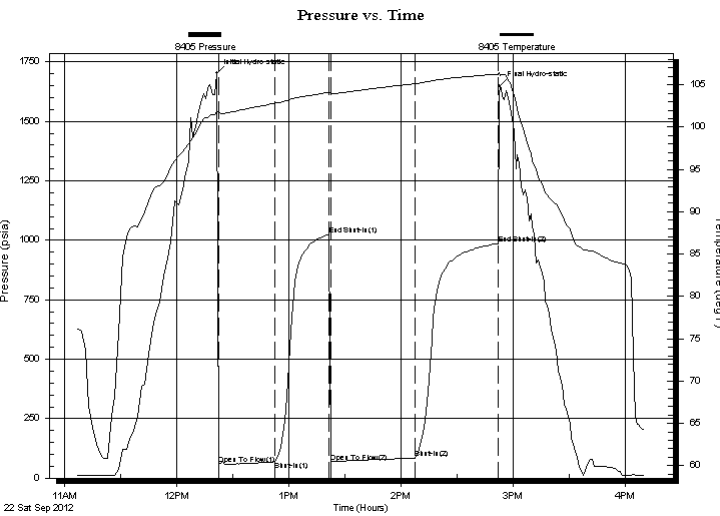
**24-18s-11w-Barton**  
**Pam Wirth #1**  
 Job Ticket: 17271 **DST#: 2**  
 Test Start: 2012.09.22 @ 11:06:00

## GENERAL INFORMATION:

Formation: **Arbuckle**  
 Deviated: No Whipstock: ft (KB)  
 Test Type: Conventional Bottom Hole (Initial)  
 Time Tool Opened: 12:22:30 Tester: Dustin Ellis  
 Time Test Ended: 16:11:00 Unit No: 3315-Great Bend-50  
 Interval: **3221.00 ft (KB) To 3284.00 ft (KB) (TVD)** Reference Elevations: 1757.00 ft (KB)  
 Total Depth: 3284.00 ft (KB) (TVD) 1750.00 ft (CF)  
 Hole Diameter: 7.88 inches Hole Condition: Fair KB to GR/CF: 7.00 ft

**Serial #: 8405 Inside**  
 Press @ Run Depth: 84.10 psia @ 3280.53 ft (KB) Capacity: 5000.00 psia  
 Start Date: 2012.09.22 End Date: 2012.09.22 Last Calib.: 2012.09.23  
 Start Time: 11:06:00 End Time: 16:11:00 Time On Btm: 2012.09.22 @ 12:21:30  
 Time Off Btm: 2012.09.22 @ 14:53:00

**TEST COMMENT:** 1st Open 30 minutes Fair building blow blew bottom bucket 15 minutes.  
 1st Shut in 30 minutes No blow back.  
 2nd Open 45 minutes Fair building blow blew bottom bucket 12 minutes.  
 2nd Shut in 45 minutes No blow back



## PRESSURE SUMMARY

Time (Min.)	Pressure (psia)	Temp (deg F)	Annotation
0	1702.83	101.87	Initial Hydro-static
1	58.50	101.65	Open To Flow (1)
31	69.01	102.81	Shut-In(1)
60	1023.32	104.09	End Shut-In(1)
61	68.35	103.94	Open To Flow (2)
106	84.10	105.13	Shut-In(2)
151	986.35	106.27	End Shut-In(2)
152	1648.78	106.14	Final Hydro-static

## Recovery

Length (ft)	Description	Volume (bbl)
62.00	Oil cut gassy mud	0.87
0.00	Gas 5% Oil 10% Mud 85%	0.00
15.00	Oil cut gassy mud	0.21
0.00	Gas 5% Oil 10% Mud 85%	0.00
0.00	233 gas in pipe.	0.00

## Gas Rates

Choke (inches)	Pressure (psia)	Gas Rate (Mcf/d)





# DRILL STEM TEST REPORT

**TOOL DIAGRAM**

RJM Company  
 Po box 256 Claflin Kansas  
 67525  
 ATTN: Jim Musgrove

**24-18s-11w-Barton**  
**Pam Wirth #1**  
 Job Ticket: 17271      **DST#: 2**  
 Test Start: 2012.09.22 @ 11:06:00

**Tool Information**

Drill Pipe:	Length: 3221.00 ft	Diameter: 3.80 inches	Volume: 45.18 bbl	Tool Weight: 2000.00 lb
Heavy Wt. Pipe:	Length: 0.00 ft	Diameter: 0.00 inches	Volume: 0.00 bbl	Weight set on Packer: 20000.00 lb
Drill Collar:	Length: 0.00 ft	Diameter: 0.00 inches	Volume: 0.00 bbl	Weight to Pull Loose: 42000.00 lb
			<u>Total Volume: 45.18 bbl</u>	Tool Chased 0.00 ft
Drill Pipe Above KB:	20.00 ft			String Weight: Initial 37000.00 lb
Depth to Top Packer:	3221.00 ft			Final 37000.00 lb
Depth to Bottom Packer:	ft			
Interval between Packers:	63.53 ft			
Tool Length:	83.53 ft			
Number of Packers:	2	Diameter: 6.75 inches		

Tool Comments:

Tool Description	Length (ft)	Serial No.	Position	Depth (ft)	Accum. Lengths
------------------	-------------	------------	----------	------------	----------------

Shut-In Tool	5.00			3206.00	
Hydraulic Tool	5.00			3211.00	
Packer	5.00			3216.00	20.00      Bottom Of Top Packer
Packer	5.00			3221.00	
Anchor	4.00			3225.00	
Change Over Sub	0.75			3225.75	
Drill Pipe	31.03			3256.78	
Change Over Sub	0.75			3257.53	
Anchor	22.00			3279.53	
Recorder	1.00	8405	Inside	3280.53	
Recorder	1.00	8400	Outside	3281.53	
Bull Plug	3.00			3284.53	63.53      Bottom Packers & Anchor

**Total Tool Length: 83.53**



# DRILL STEM TEST REPORT

## FLUID SUMMARY

RJM Company  
 Po box 256 Claflin Kansas  
 67525  
 A T T N : Jim Musgrove

**24-18s-11w-Barton**  
**Pam Wirth #1**  
 Job Ticket: 17271      **DST#: 2**  
 Test Start: 2012.09.22 @ 11:06:00

### Mud and Cushion Information

Mud Type: Gel Chem	Cushion Type:	Oil API:	deg API
Mud Weight: 9.00 lb/gal	Cushion Length: ft	Water Salinity:	ppm
Viscosity: 52.00 sec/qt	Cushion Volume: bbl		
Water Loss: 10.40 in <sup>3</sup>	Gas Cushion Type:		
Resistivity: ohm.m	Gas Cushion Pressure: psia		
Salinity: 6000.00 ppm			
Filter Cake: 1.00 inches			

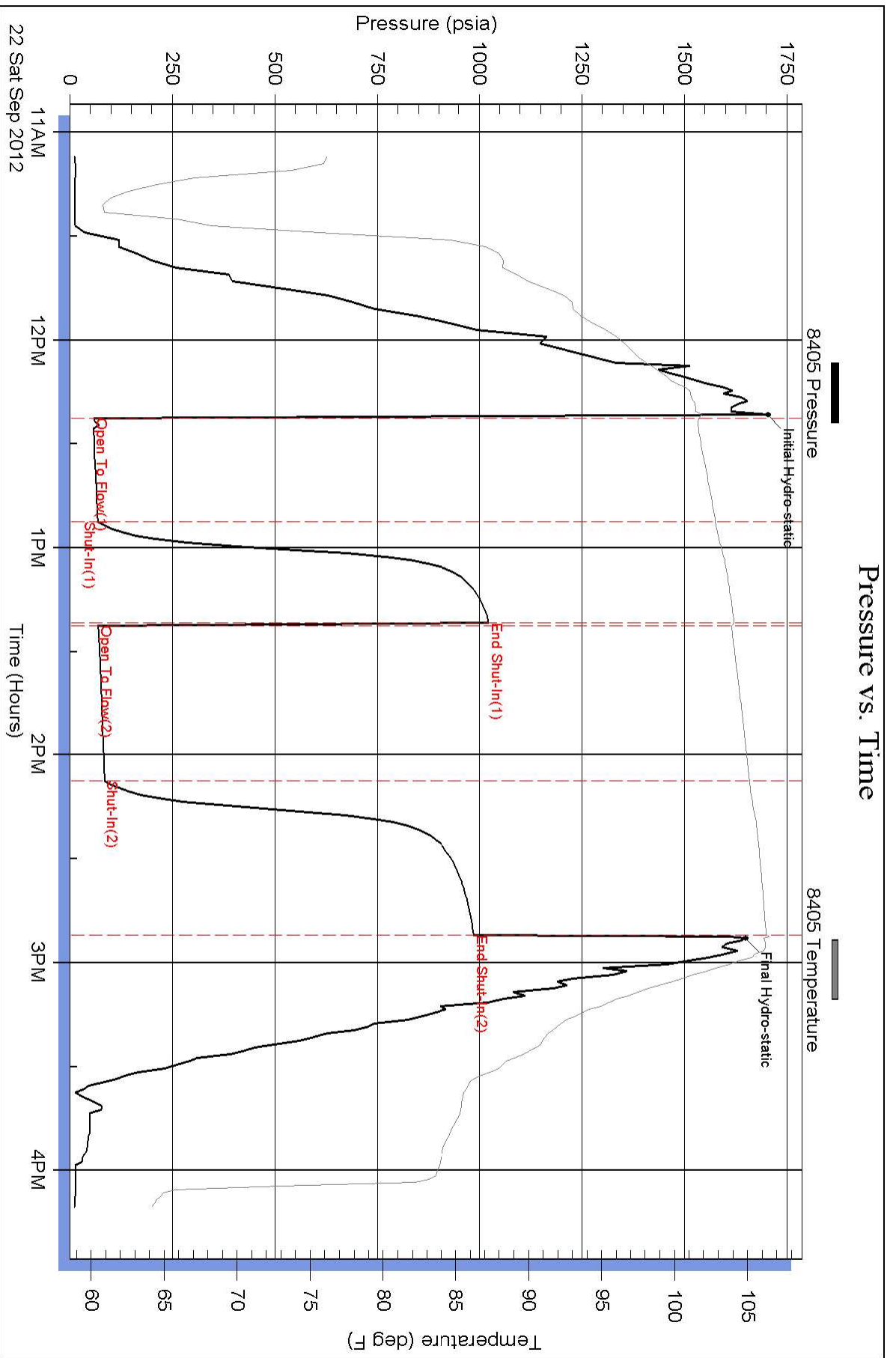
### Recovery Information

Recovery Table

Length ft	Description	Volume bbl
62.00	Oil cut gassy mud	0.870
0.00	Gas 5%Oil 10% Mud85%	0.000
15.00	Oil cut gassy mud	0.210
0.00	Gas 5% Oil 10% Mud 85%	0.000
0.00	233 gas in pipe.	0.000

Total Length: 77.00 ft      Total Volume: 1.080 bbl  
 Num Fluid Samples: 0      Num Gas Bombs: 0      Serial #:  
 Laboratory Name:      Laboratory Location:  
 Recovery Comments:

### Pressure vs. Time



### Pressure vs. Time

