

White Exploration, Inc.

Chain Ranch 'B' #1

Scale 1:240 (5"=100') Imperial
Measured Depth Log

Well Name: Chain Ranch 'B' #1
Location: NW 1/4 of Section 1-T31S-R12W
License Number: API 15-007-23951-00
Spud Date: 9/28/2012
Surface Coordinates: 475' FNL & 1,916' FWL
Region: Barber Co., KS
Drilling Completed: 10/7/2012
Bottom Hole Coordinates: 475' FNL & 1,916' FWL
Ground Elevation (ft): 1,645' K.B. Elevation (ft): 1,655'
Logged Interval (ft): 3,500' To: 4,765' Total Depth (ft): 4,765'
Formation: Simpson
Type of Drilling Fluid: Chemical

Printed by WellSight Log Viewer from WellSight Systems 1-800-447-1534 www.WellSight.com

OPERATOR

Company: White Exploration, Inc
Address: 2400 N. Woodlawn, Suite 115
Wichita, KS 67220

GEOLOGIST

Name: Thomas M. Williams
Company: Petroleum Geologist
Address: Wichita, KS

CORE

Contractor:
Core #:
Formation:
Core Interval: From: Cut:
To: Recovered:
Bit type:
Size:
Coring Time:

Formation Tops

	Sample Top	E-Log Top
Oread Lime	3506 (-1851)	3510 (-1855)
Heebner Shale	3558 (-1903)	3560 (-1905)
Toronto Lime	3574 (-1919)	3575 (-1920)
Douglas Shale	3586 (-1931)	3588 (-1933)
Brown Lime	3764 (-2109)	3765 (-2110)
Stark Shale	4112 (-2457)	4114 (-2459)
Hushpuckney Shale	4151 (-2496)	4153 (-2498)
Mississippian	4310 (-2655)	4312 (-2657)
Kinderhook Shale	4400 (-2745)	4387 (-2732)
Woodford Shale	4529 (-2874)	4530 (-2875)
Viola Lime	4565 (-2910)	4564 (-2909)
Simpson Shale	4649 (-2994)	4651 (-2996)
Simpson Sand	4659 (-3004)	4664 (-3009)

DSTs

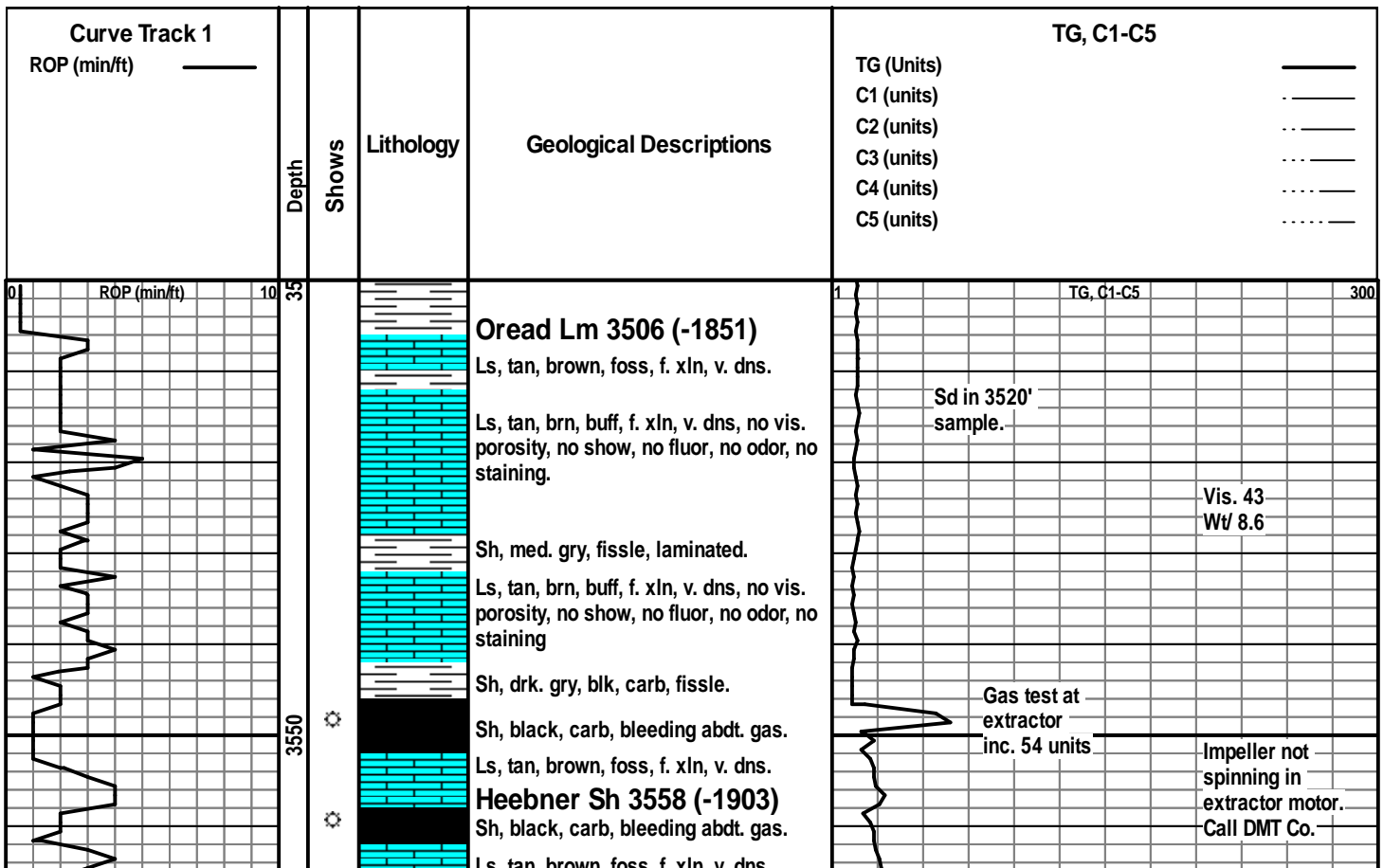
None

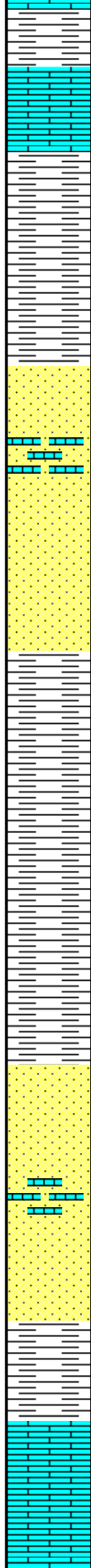
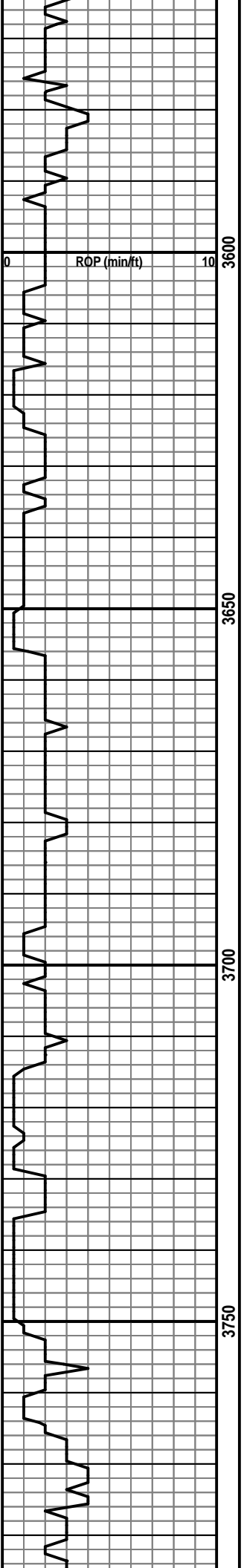
Comments

Due to the shows of oil and gas observed in the Mississippian Formation, positive structural position and electric log analysis, it was decided to further test the Chain Ranch 'B' #1 through production casing.

ROCK TYPES

 Anhy	 Carb.sh	 Lmst	 Shcol
 Bent	 Congl	 Meta	 Shgy
 Brec	 Dol	 Mrlst	 Slstst
 Cht	 Gyp	 Salt	 Ss
 Clyst	 Igne	 Shale	 Till





Ls, tan, brown, f. xln, v. dns.

Sh, lt. to med. gry, fissle, laminated

Toronto Lm 3574 (-1919)

Ls, crm. wh, buff, f-m xln, foss, p-f dev. int. xln. & vug. porosity, no shows, chalky fluor, no staining.

Douglas Sh 3586 (-1931)

Sh, lt. to med. gry, micaceous, fissle, laminated.

Sh, lt. gry, fissle, silty, laminated.

Sh, lt. to med. gry, micaceous, fissle, laminated.

SS, lt. gry, f-m gr, sub-ang, fair sort, micaceous, laminated, fair dev. int. gr. porosity, no show, no fluor, no odor, no staining.

SS, lt. gry, f-m gr, sub-ang, fair sort, micaceous, laminated, fair dev. int. gr. porosity, no show, no fluor, no odor, no staining.

Sh, lt. gry, fissle, silty, laminated.

Sh, lt. to med. gry, micaceous, fissle, laminated.

Sh, lt. gry, fissle, silty, laminated.

Sh, lt. to med. gry, micaceous, fissle, laminated.

Sh, lt. gry, fissle, silty, laminated.

SS, lt. gry, f-m gr, sub-ang, fair sort, micaceous, laminated, fair dev. int. gr. porosity, no show, no fluor, no odor, no staining.

SS, lt. gry, f-m gr, sub-ang, fair sort, micaceous, laminated, fair dev. int. gr. porosity, no show, no fluor, no odor, no staining.

Sh, lt. to med. gry, micaceous, fissle, laminated.

Brown Lm 3764 (-2109)

Ls, tan, brn, f. xln, v. dns, no vis. por, no show, no fluor, no odor.

Ls, buff, tan, m. xln, dns, foss, oolitic, w/ poor dev. vug. por, no show, no fluor, no odor, no stn.

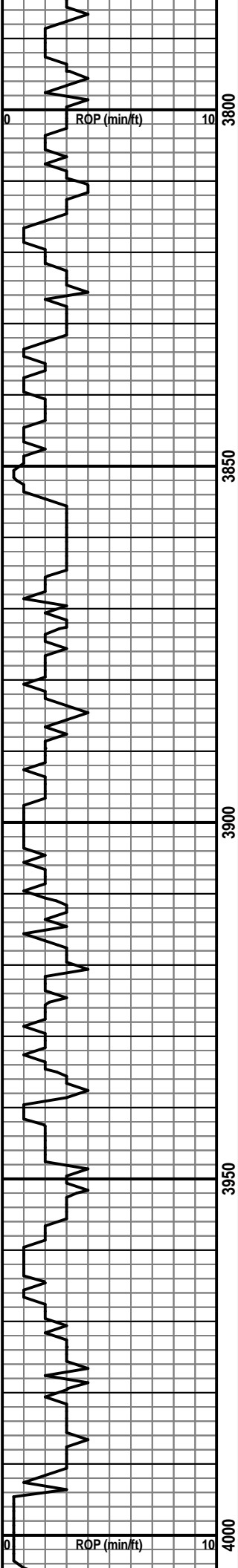
Extractor repaired.

Recycle 20 units

TG inc. 54 units
Poss. recycle

TG, C1-C5

Vis. 51
Wt. 8.8



3800 Ls, buff, tan, m. xln, dns, foss, oolitic, w/ poor dev. vug. por, no show, no fluor, no odor, no stn.

3850 Ls, buff, tan, m. xln, dns, foss, oolitic, w/ p-f dev. vug. & int. xln. por, no show, no fluor, no odor, no stn.

Ls, buff, tan, m. xln, dns, foss, oolitic, w/ p-f dev. vug. & int. xln. por, no show, no fluor, no odor, no stain, w/ c. xln. sparite.

Ls, tan, buff, f-m xln, v. brittle, foss, oolitic, fair to well dev. int. xln. & vug. porosity, no show, no fluor, no odor, no staining, chalky.

Ls, tan, buff, f-m xln, v. brittle, foss, oolitic, fair to well dev. int. xln. & vug. porosity, no show, no fluor, no odor, no staining, chalky.

Ls, buff, tan, f-m xln, w/ c. xln. sparite, p. dev. int. xln. por, no shw, chalky fluor, no odor, no stn.

Ls, buff, tan, f-m xln, w/ c. xln. sparite, p. dev. int. xln. por, no shw, chalky fluor, no odor, no stn.

Ls, tan, buff, f-m xln, v. brittle, foss, oolitic, fair to well dev. int. xln. & vug. porosity, no show, no fluor, no odor, no staining, chalky.

Ls, buff, tan, f-m xln, w/ c. xln. sparite, p-f dev. int. xln. porosity, no show, no fluor, no odor, no stn.

Ls, tan, buff, f-m xln, v. brittle, foss, oolitic, fair to well dev. int. xln. & vug. porosity, no show, no fluor, no odor, no staining, chalky.

Ls, tan, buff, f-m xln, v. brittle, foss, oolitic, fair to well dev. int. xln. & vug. porosity, no show, no fluor, no odor, no staining, chalky.

Ls, buff, tan, f-m xln, w/ c. xln. sparite, p-f dev. int. xln. porosity, no show, no fluor, no odor, no stn.

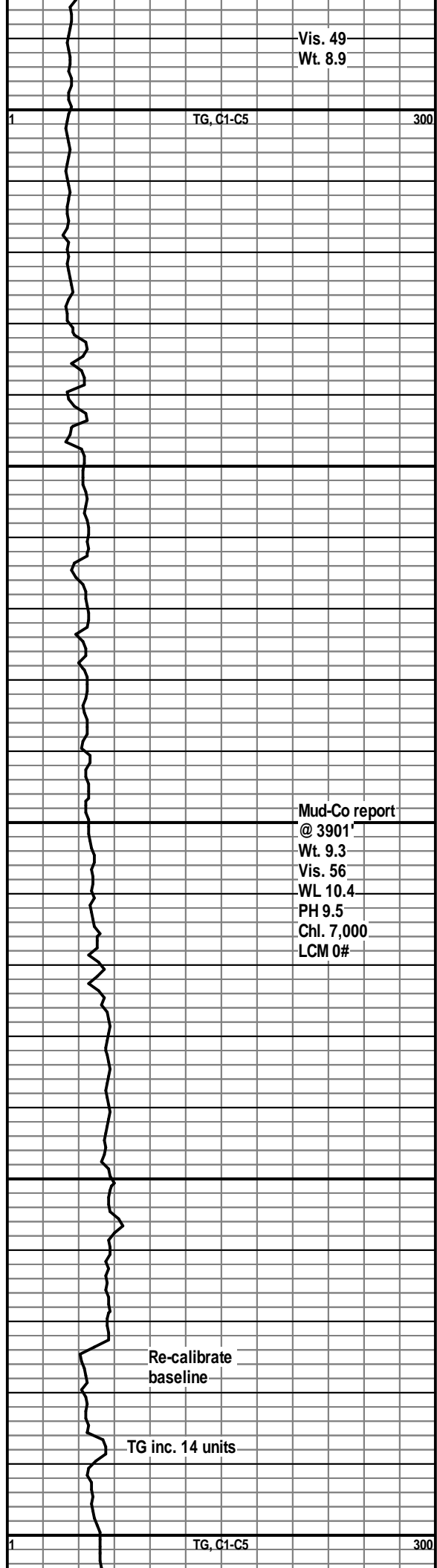
Ls, tan, buff, f-m xln, v. brittle, foss, fair to well dev. int. xln. & vug. porosity, no show, no fluor, no odor, no staining, chalky.

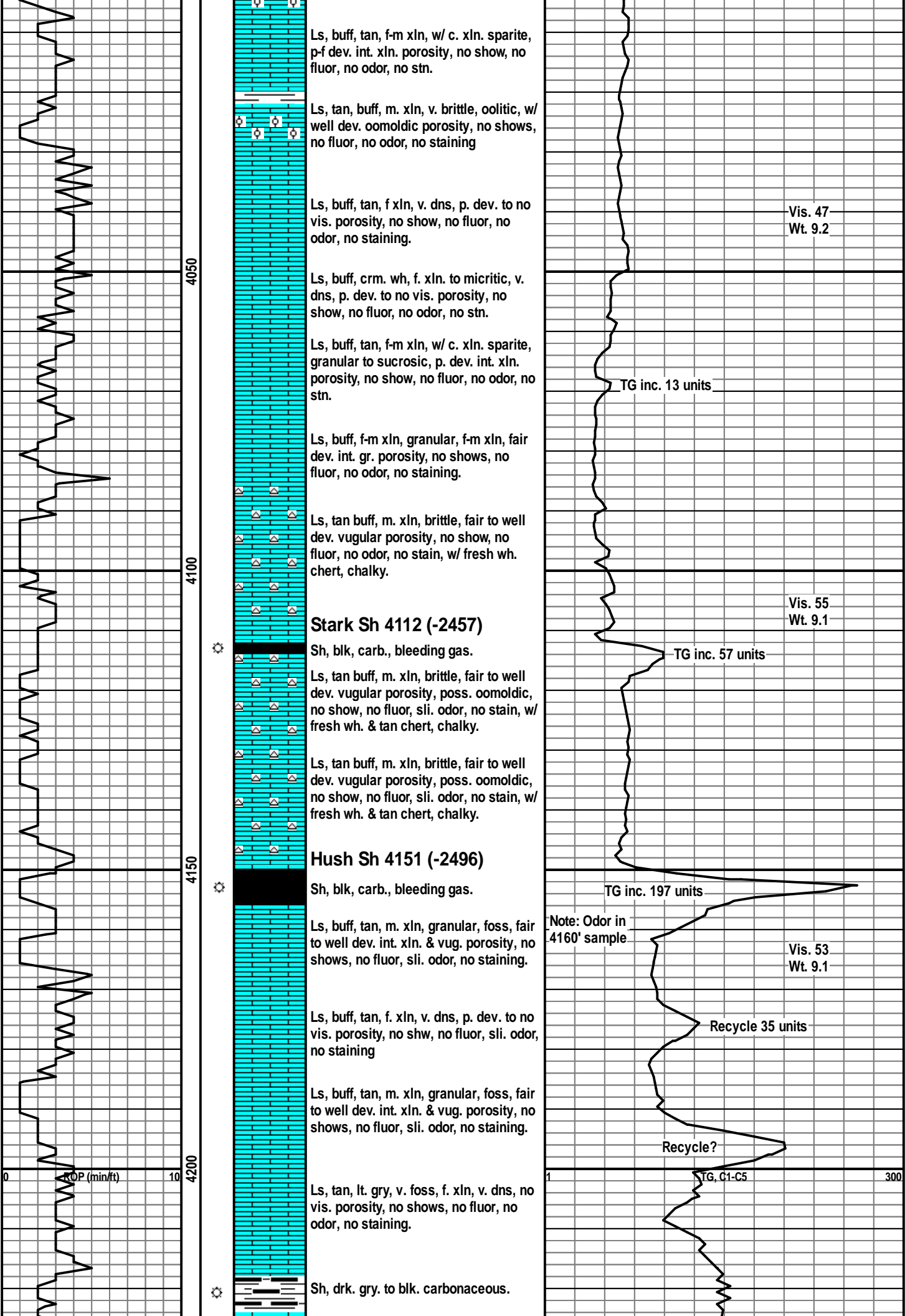
3950 Sh, lt. to med. gry, dns, fissle.

Ls, buff, tan, f-m xln, w/ c. xln. sparite, p-f dev. int. xln. porosity, no show, no fluor, no odor, no stn.

4000 Sh, med. to drk. gry, dns, fissle.

Ls, tan, buff, m. xln, v. brittle, oolitic, w/ well dev. oomoldic porosity, no shows, no fluor, no odor, no staining





Ls, buff, tan, f-m xln, w/ c. xln. sparite, p-f dev. int. xln. porosity, no show, no fluor, no odor, no stn.

Ls, tan, buff, m. xln, v. brittle, oolitic, w/ well dev. oomoldic porosity, no shows, no fluor, no odor, no staining

Ls, buff, tan, f xln, v. dns, p. dev. to no vis. porosity, no show, no fluor, no odor, no staining.

Vis. 47
Wt. 9.2

Ls, buff, crm. wh, f. xln. to micritic, v. dns, p. dev. to no vis. porosity, no show, no fluor, no odor, no stn.

Ls, buff, tan, f-m xln, w/ c. xln. sparite, granular to sucrosic, p. dev. int. xln. porosity, no show, no fluor, no odor, no stn.

TG inc. 13 units

Ls, buff, f-m xln, granular, f-m xln, fair dev. int. gr. porosity, no shows, no fluor, no odor, no staining.

Ls, tan buff, m. xln, brittle, fair to well dev. vugular porosity, no show, no fluor, no odor, no stain, w/ fresh wh. chert, chalky.

Vis. 55
Wt. 9.1

Stark Sh 4112 (-2457)

Sh, blk, carb., bleeding gas.

TG inc. 57 units

Ls, tan buff, m. xln, brittle, fair to well dev. vugular porosity, poss. oomoldic, no show, no fluor, sli. odor, no stain, w/ fresh wh. & tan chert, chalky.

Ls, tan buff, m. xln, brittle, fair to well dev. vugular porosity, poss. oomoldic, no show, no fluor, sli. odor, no stain, w/ fresh wh. & tan chert, chalky.

Hush Sh 4151 (-2496)

Sh, blk, carb., bleeding gas.

TG inc. 197 units

Ls, buff, tan, m. xln, granular, foss, fair to well dev. int. xln. & vug. porosity, no shows, no fluor, sli. odor, no staining.

Note: Odor in 4160' sample

Vis. 53
Wt. 9.1

Ls, buff, tan, f. xln, v. dns, p. dev. to no vis. porosity, no shw, no fluor, sli. odor, no staining

Recycle 35 units

Ls, buff, tan, m. xln, granular, foss, fair to well dev. int. xln. & vug. porosity, no shows, no fluor, sli. odor, no staining.

Recycle?

Ls, tan, lt. gry, v. foss, f. xln, v. dns, no vis. porosity, no shows, no fluor, no odor, no staining.

TG, C1-C5

Sh, drk. gry. to blk. carbonaceous.

300

4050

4100

4150

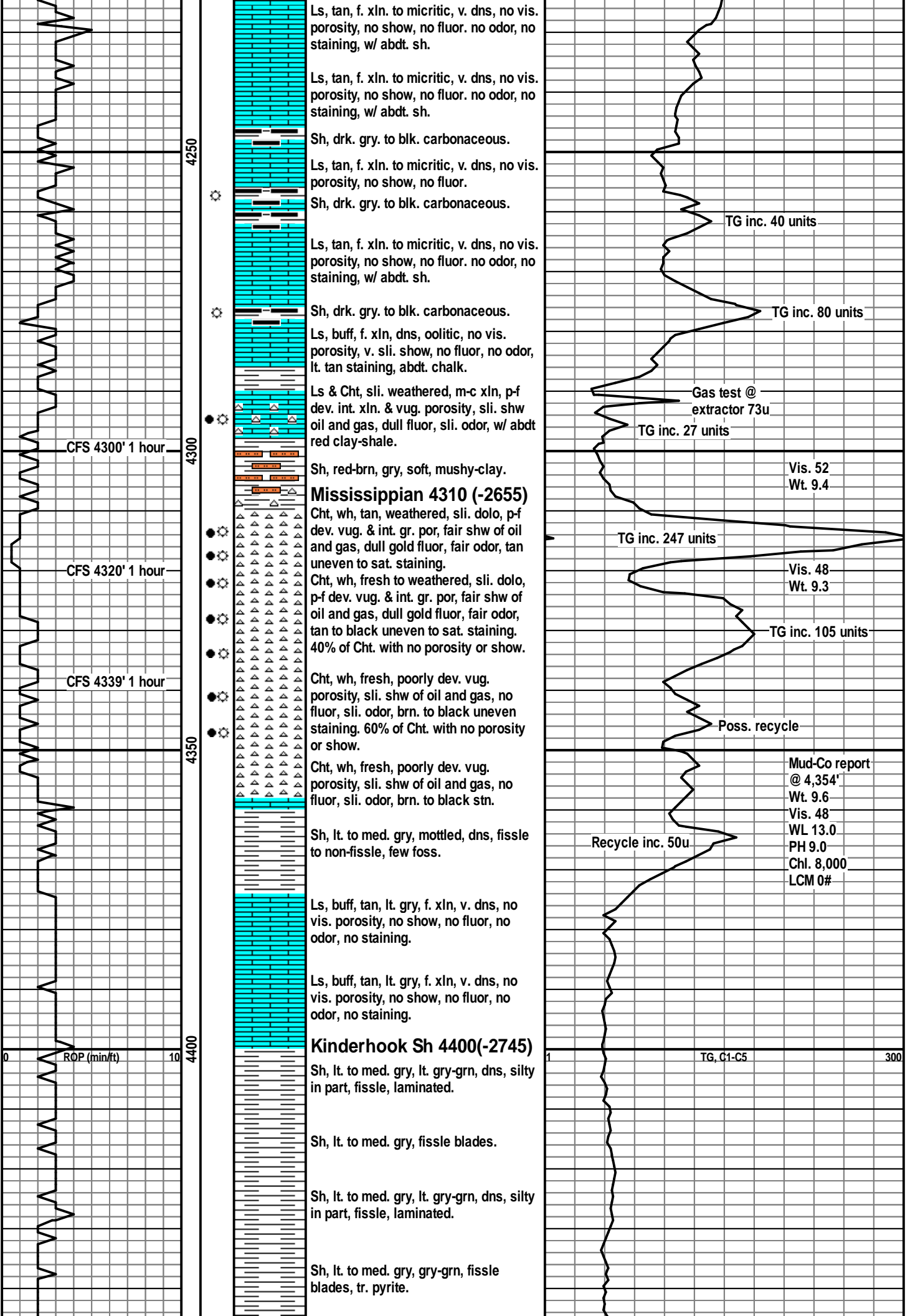
4200

OP (min/ft)

0

10

1



Ls, tan, f. xln. to micritic, v. dns, no vis. porosity, no show, no fluor. no odor, no staining, w/ abdt. sh.

Ls, tan, f. xln. to micritic, v. dns, no vis. porosity, no show, no fluor. no odor, no staining, w/ abdt. sh.

Sh, drk. gry. to blk. carbonaceous.

Ls, tan, f. xln. to micritic, v. dns, no vis. porosity, no show, no fluor.

Sh, drk. gry. to blk. carbonaceous.

Ls, tan, f. xln. to micritic, v. dns, no vis. porosity, no show, no fluor. no odor, no staining, w/ abdt. sh.

Sh, drk. gry. to blk. carbonaceous.

Ls, buff, f. xln, dns, oolitic, no vis. porosity, v. sli. show, no fluor, no odor, lt. tan staining, abdt. chalk.

Ls & Cht, sli. weathered, m-c xln, p-f dev. int. xln. & vug. porosity, sli. shw oil and gas, dull fluor, sli. odor, w/ abdt red clay-shale.

Sh, red-brn, gry, soft, mushy-clay.

Mississippian 4310 (-2655)

Cht, wh, tan, weathered, sli. dolo, p-f dev. vug. & int. gr. por, fair shw of oil and gas, dull gold fluor, fair odor, tan uneven to sat. staining.

Cht, wh, fresh to weathered, sli. dolo, p-f dev. vug. & int. gr. por, fair shw of oil and gas, dull gold fluor, fair odor, tan to black uneven to sat. staining. 40% of Cht. with no porosity or show.

Cht, wh, fresh, poorly dev. vug. porosity, sli. shw of oil and gas, no fluor, sli. odor, brn. to black uneven staining. 60% of Cht. with no porosity or show.

Cht, wh, fresh, poorly dev. vug. porosity, sli. shw of oil and gas, no fluor, sli. odor, brn. to black stn.

Sh, lt. to med. gry, mottled, dns, fissle to non-fissle, few foss.

Ls, buff, tan, lt. gry, f. xln, v. dns, no vis. porosity, no show, no fluor, no odor, no staining.

Ls, buff, tan, lt. gry, f. xln, v. dns, no vis. porosity, no show, no fluor, no odor, no staining.

Kinderhook Sh 4400(-2745)

Sh, lt. to med. gry, lt. gry-grn, dns, silty in part, fissle, laminated.

Sh, lt. to med. gry, fissle blades.

Sh, lt. to med. gry, lt. gry-grn, dns, silty in part, fissle, laminated.

Sh, lt. to med. gry, gry-grn, fissle blades, tr. pyrite.

CFS 4300' 1 hour

CFS 4320' 1 hour

CFS 4339' 1 hour

ROP (min/ft)

TG inc. 40 units

TG inc. 80 units

Gas test @ extractor 73u

TG inc. 27 units

Vis. 52
Wt. 9.4

TG inc. 247 units

Vis. 48
Wt. 9.3

TG inc. 105 units

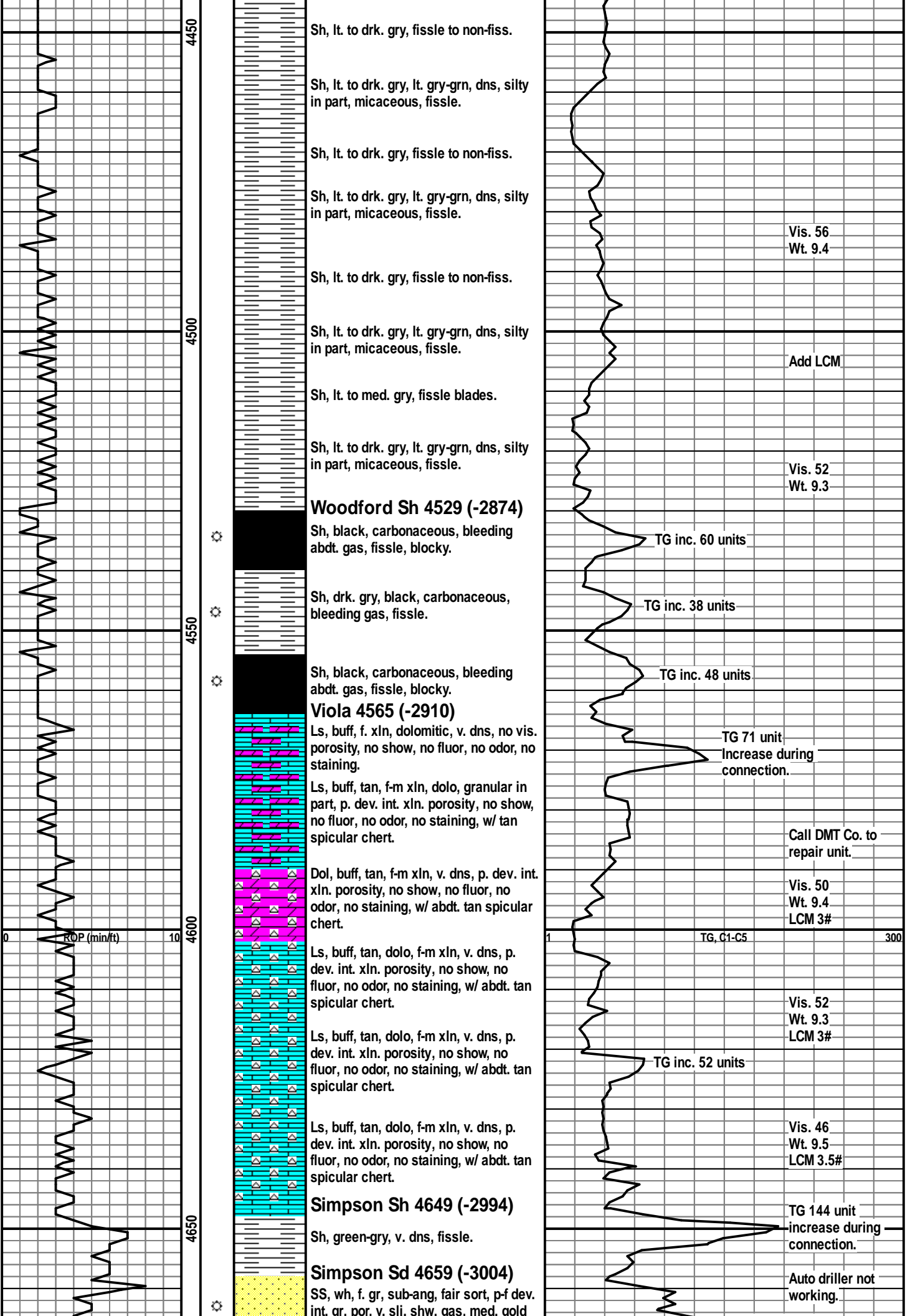
Poss. recycle

Mud-Co report @ 4,354'
Wt. 9.6
Vis. 48
WL 13.0
PH 9.0
Chl. 8,000
LCM 0#

Recycle inc. 50u

TG, C1-C5

300



4450
4500
4550
4600
4650

Sh, lt. to drk. gry, fissle to non-fiss.

Sh, lt. to drk. gry, lt. gry-grn, dns, silty in part, micaceous, fissle.

Sh, lt. to drk. gry, fissle to non-fiss.

Sh, lt. to drk. gry, lt. gry-grn, dns, silty in part, micaceous, fissle.

Sh, lt. to drk. gry, fissle to non-fiss.

Sh, lt. to drk. gry, lt. gry-grn, dns, silty in part, micaceous, fissle.

Sh, lt. to med. gry, fissle blades.

Sh, lt. to drk. gry, lt. gry-grn, dns, silty in part, micaceous, fissle.

Woodford Sh 4529 (-2874)
Sh, black, carbonaceous, bleeding abdt. gas, fissle, blocky.

Sh, drk. gry, black, carbonaceous, bleeding gas, fissle.

Sh, black, carbonaceous, bleeding abdt. gas, fissle, blocky.

Viola 4565 (-2910)
Ls, buff, f. xln, dolomitic, v. dns, no vis. porosity, no show, no fluor, no odor, no staining.

Ls, buff, tan, f-m xln, dolo, granular in part, p. dev. int. xln. porosity, no show, no fluor, no odor, no staining, w/ tan spicular chert.

Dol, buff, tan, f-m xln, v. dns, p. dev. int. xln. porosity, no show, no fluor, no odor, no staining, w/ abdt. tan spicular chert.

Ls, buff, tan, dolo, f-m xln, v. dns, p. dev. int. xln. porosity, no show, no fluor, no odor, no staining, w/ abdt. tan spicular chert.

Ls, buff, tan, dolo, f-m xln, v. dns, p. dev. int. xln. porosity, no show, no fluor, no odor, no staining, w/ abdt. tan spicular chert.

Ls, buff, tan, dolo, f-m xln, v. dns, p. dev. int. xln. porosity, no show, no fluor, no odor, no staining, w/ abdt. tan spicular chert.

Simpson Sh 4649 (-2994)
Sh, green-gry, v. dns, fissle.

Simpson Sd 4659 (-3004)
SS, wh, f. gr, sub-ang, fair sort, p-f dev. int. gr. por. v. sli. shw. gas. med. gold

ROP (min/ft)

Vis. 56
Wt. 9.4

Add LCM

Vis. 52
Wt. 9.3

TG inc. 60 units

TG inc. 38 units

TG inc. 48 units

TG 71 unit
Increase during connection.

Call DMT Co. to repair unit.

Vis. 50
Wt. 9.4
LCM 3#

TG, C1-C5 300

Vis. 52
Wt. 9.3
LCM 3#

TG inc. 52 units

Vis. 46
Wt. 9.5
LCM 3.5#

TG 144 unit
increase during connection.

Auto driller not working.

