

White Exploration, Inc.

Ash "B" #2

Scale 1:240 (5"=100') Imperial
Measured Depth Log

Well Name: Ash B #2
Location: SW 1/4 of Section 27-T32S-R12W
License Number: API 15-007-23947-00
Spud Date: 9/18/2012
Surface Coordinates: 840' FSL & 1,980' FWL
Region: Barber Co., KS
Drilling Completed: 9/27/2012
Bottom Hole Coordinates: 840' FSL & 1,980' FWL
Ground Elevation (ft): 1,560' K.B. Elevation (ft): 1,570'
Logged Interval (ft): 3,500' To: 4,895' Total Depth (ft): 4,895'
Formation: Simpson
Type of Drilling Fluid: Chemical

Printed by WellSight Log Viewer from WellSight Systems 1-800-447-1534 www.WellSight.com

OPERATOR

Company: White Exploration, Inc
Address: 2400 N. Woodlawn, Suite 115
Wichita, KS 67220

GEOLOGIST

Name: Thomas M. Williams
Company: Petroleum Geologist
Address: Wichita, KS

CORE

Contractor:
Core #:
Formation:
Core Interval: From: Cut:
To: Recovered:
Bit type:
Size:
Coring Time:

Formation Tops

	Sample Top	E-Log Top
Oread Lime	3631 (-2061)	3632 (-2062)
Heebner Shale	3669 (-2099)	3666 (-2096)
Snyderville Sand	3681 (-2111)	3681 (-2111)
Douglas Sand	3791 (-2272)	3795 (-2225)
Brown Lime	3856 (-2286)	3860 (-2290)
Stark Shale	4228 (-2658)	4232 (-2662)
Hushpuckney Shale	4260 (-2690)	4264 (-2694)
Mississippian	4409 (-2839)	4414 (-2844)
Kinderhook Shale	4587 (-3017)	4591 (-3021)
Woodford Shale	4660 (-3090)	4660 (-3090)
Viola Lime	4693 (-3123)	4694 (-3124)
Simpson Shale	4788 (-3218)	4792 (-3222)
Simpson Sand	4797 (-3227)	4800 (-3230)

DSTs

DST #1 4775'-4835' Mis-run?

DST #2 4775'-4835' Simpson Sand

IHP - 2331#

IFP - 35-38# 30"

ISIP - 1647# 60"

FFP - 30-206# 60"

FSIP - 1603# 90"

FHP - 2298#

IF - Weak surface blow

FF - Fair, BOB in 46 minutes

Rec: 319' Mud

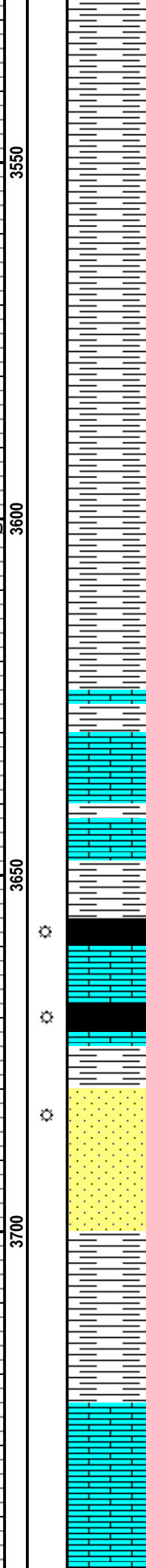
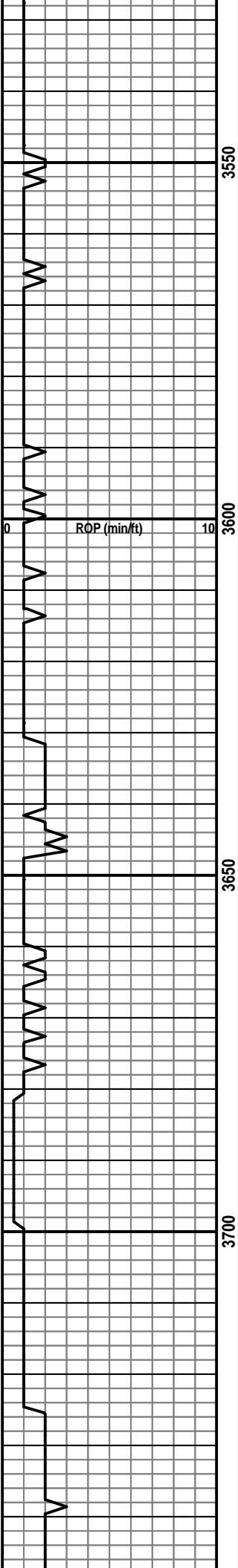
Comments

Due to the shows of oil and gas observed in the Mississippian Chert and Simpson Sand, positive structural position and electric log analysis, it was decided to further test the Ash 'B' #2 through production casing.

ROCK TYPES

 Anhy	 Carb.sh	 Lmst	 Shcol
 Bent	 Congl	 Meta	 Shgy
 Brec	 Dol	 Mrlst	 Sltst
 Cht	 Gyp	 Salt	 Ss
 Clyst	 Igne	 Shale	 Till

Curve Track 1		Depth	Shows	Lithology	Geological Descriptions	TG, C1-C5				
ROP (min/ft)						TG (Units)	C1 (units)	C2 (units)	C3 (units)	C4 (units)
0	ROP (min/ft)	10	35			1	TG, C1-C5			300
					Sh, lt. gry, lt. green, silty, fissle, w/ abdt. red shale in sample.					



Sh, lt. gry, lt. green, silty, fissle, w/ abdt. red shale in sample.

Sh, lt. gry, lt. green, silty, fissle, w/ abdt. red shale in sample.

Sh, lt. gry, lt. green, silty, fissle, w/ abdt. red shale in sample.

Sh, lt. gry, lt. green, silty, fissle, w/ abdt. red shale in sample.

Sh. & siltstone, lt. gry, micaceous, fissle, laminated.

Sh. & siltstone, lt. gry, micaceous, fissle, laminated.

Oread Lm 3631 (-2061)
Ls, brown, tan, v. dns, f. xln, no vis. porosity, no shows, no fluor, no odor, no staining, few foss.

Ls, brown, tan, v. dns, f. xln, no vis. porosity, no shows, no fluor, no odor, no staining, few foss.

Sh, lt. to med. gry, micaceous, laminated, fissle.

Sh, blk, carb. bleeding abdt. gas.

Ls, brown, tan, v. dns, f. xln. foss.

Heebner Sh 3669 (-2099)
Sh, blk, carb. bleeding abdt. gas.

Snyderville Sd 3681 (-2111)
SS, lt. gry, fine to med. gr, sub-ang, well sort, micaceous, calc. cement, friable in part, fair dev. int. gr. porosity, sli. shw. gas, no fluor, med. odor, no staining.

Sh, lt. to med. gry, micaceous, laminated, fissle.

Sh, lt. to med. gry, micaceous, laminated, fissle.

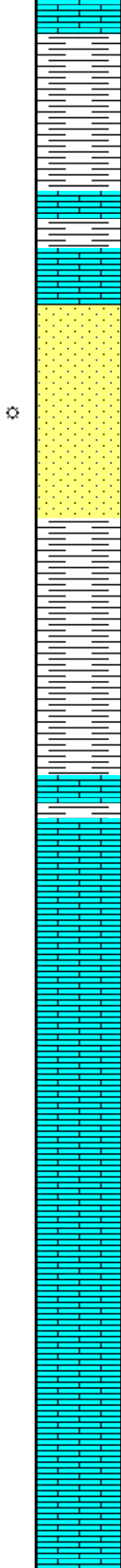
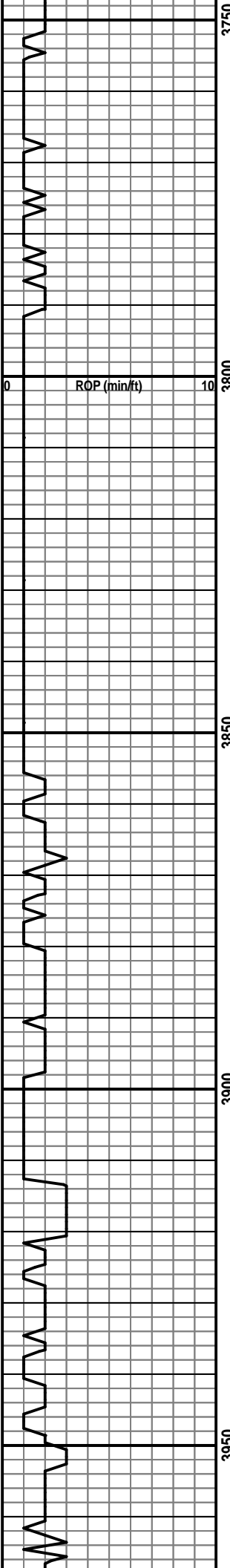
Ls, tan, lt. gry, buff, v. dns, p. dev. to no vis. porosity, no shows, no fluor, no odor, no staining.

Ls, tan, lt. gry, buff, v. dns, p. dev. to no vis. porosity, no shows, no fluor, no

Mud-Co report @
3585'
Wt. 8.9
Vis. 52
WL 10.8
PH 10.0
Chl. 4,000
LCM 0#

TG, C1-C5 300

Vis. 49
Wt. 9.4



odor, no staining.

Sh, lt. to med. gry, micaceous, laminated, fissle.

Sh, lt. to med. gry, micaceous, laminated, fissle.

Ls, tan, lt. gry, buff, v. dns, p. dev. to no vis. porosity, no shows, no fluor, no odor, no staining.

Douglas Sd 3791 (-2221)

SS, lt. gry, m. gr, sub-ang, fair sort, calcareous cem, friable in part, fair dev. int. gr. porosity, sli. shw. gas, no fluor, sli. odor, no staining.

Sh, lt. to med. gry, soft, silty, fissle, laminated.

Sh, lt. to med. gry, soft, silty, fissle, laminated.

Sh, lt. to med. gry, soft, silty, fissle, laminated.

Brown Lm 3856 (-2286)

Ls, brown, f. xln, v. dns, no show.

Ls, tan, brn, buff, f. xln, v. dns, p. dev. to no vis. porosity, no show, no fluor, no odor, no staining.

Ls, tan, buff-wh, f. xln, v. dns, p. dev. to no vis. porosity, no show, no fluor, no odor, no staining.

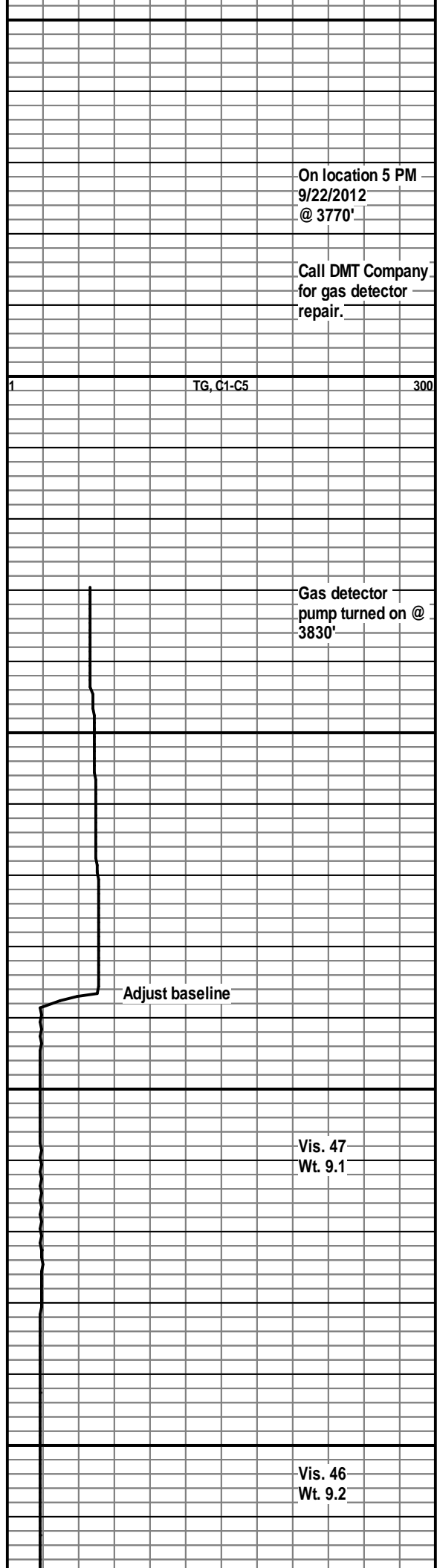
Ls, crm. wh, buff, f-m xln, brittle, fair dev. vug. & int. xln. porosity, no shows, no fluor, no odor, no staining.

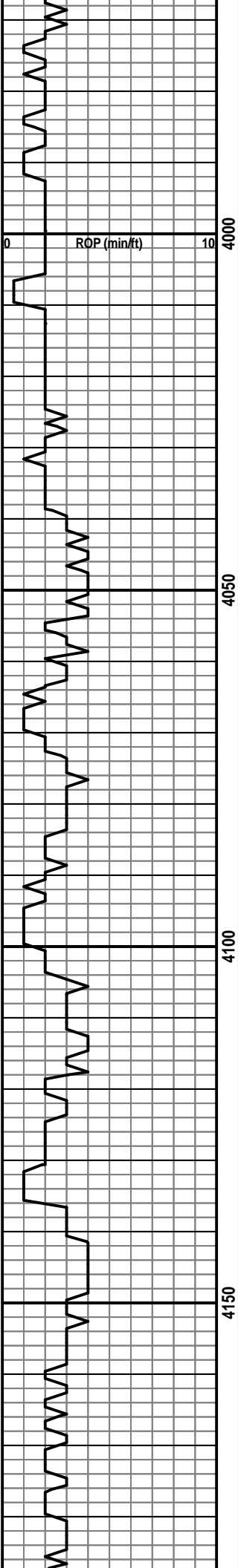
Ls, tan, brn, buff, f. xln, v. dns, no vis. porosity, no shows, no fluor, no odor, no staining.

Ls, tan, brn, buff, f. xln, v. dns, poorly dev. int-xln. porosity, no shows, no fluor, no odor, no staining.

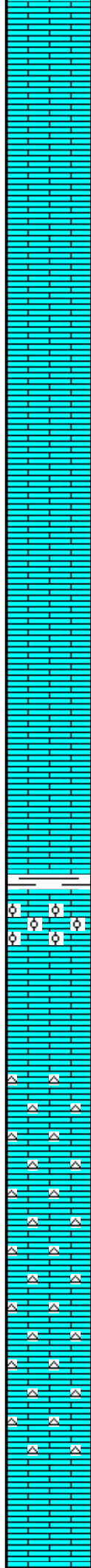
Ls, tan, brn, buff, f. xln, v. dns, poorly dev. int-xln. porosity, no shows, no fluor, no odor, no staining.

Ls, tan, brn, buff, f. xln, v. dns, poorly





4000
4050
4100
4150



dev. int-xln. porosity, no shows, no fluor, no odor, no staining.

Ls, buff, tan, crn. wh, f-m xln, poor to fair dev. int. xln. & vug. porosity, no show, no fluor, no odor, no stn.

Ls, buff, tan, crn. wh, f-m xln, poor dev. int. xln. & vug. porosity, no show, no fluor, no odor, no stn.

Ls, buff, tan, m-c xln. w/ sparite, well dev. int. xln. porosity, no show, no fluor, no odor, no stn.

Ls, buff, tan, f. xln, v. dns, poorly dev. to no vis. porosity, no show, no fluor, no odor, no staining.

Ls, tan, buff, f. xln, v. dns, poorly dev. to no vis. porosity, no show, no fluor, no odor, no staining.

Ls, tan, buff, f. xln, v. dns, poorly dev. to no vis. porosity, no show, no fluor, no odor, no staining.

Ls, tan, buff, m. xln, granular, fair dev. int. xln. porosity, no show. no fluor, no odor, no staining.

Ls, tan, buff, f. xln, v. dns, poorly dev. to no vis. porosity, no show, no fluor, no odor, no staining.

Sh, gry, black, carb, bleeding gas.

Ls, tan, f-m xln, brittle, oolitic, w/ fair dev. oomoldic porosity, no show, no fluor, no odor, no stn.

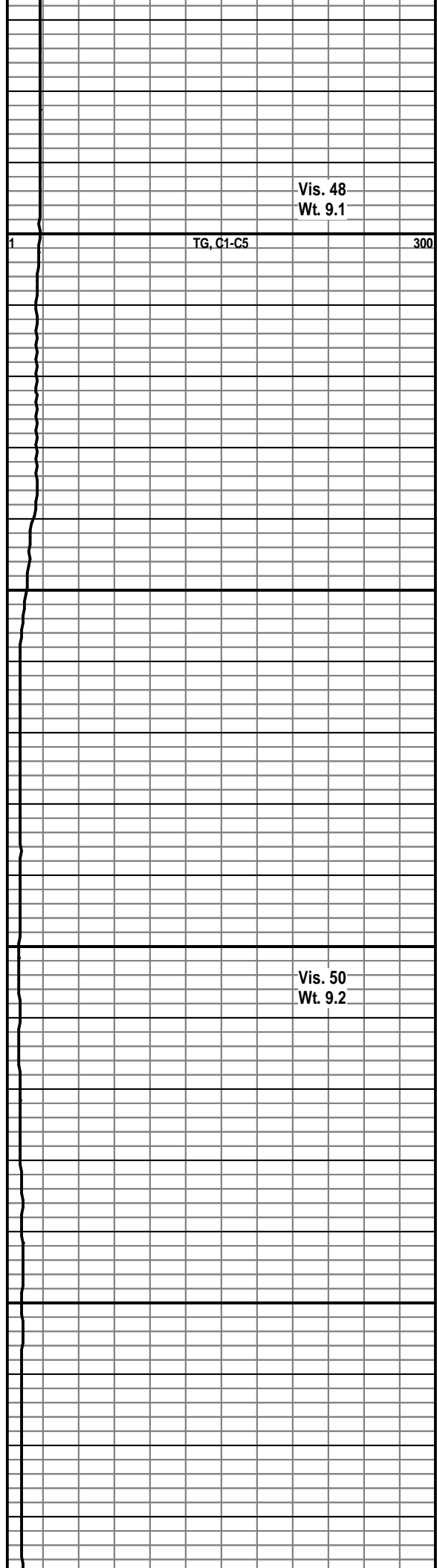
Ls, buff, crm. wh, f. xln, v. dns, poorly dev. to no vis. porosity, no show, no fluor, no odor, no stn.

Ls, buff, crm. wh, f-m xln, dns. to sub-chalky, fair dev. int. xln. & vug. porosity, no show, no fluor, no odor, no stn, w/ abdt. white fresh chert.

Ls, buff, crm. wh, f. xln, v. dns, poorly dev. to no vis. porosity, no show, no fluor, no odor, no stn, w/ abdt. white fresh chert.

Ls, buff, crm. wh, f. xln, v. dns, poorly dev. to no vis. porosity, no show, no fluor, no odor, no stn, w/ abdt. white fresh chert.

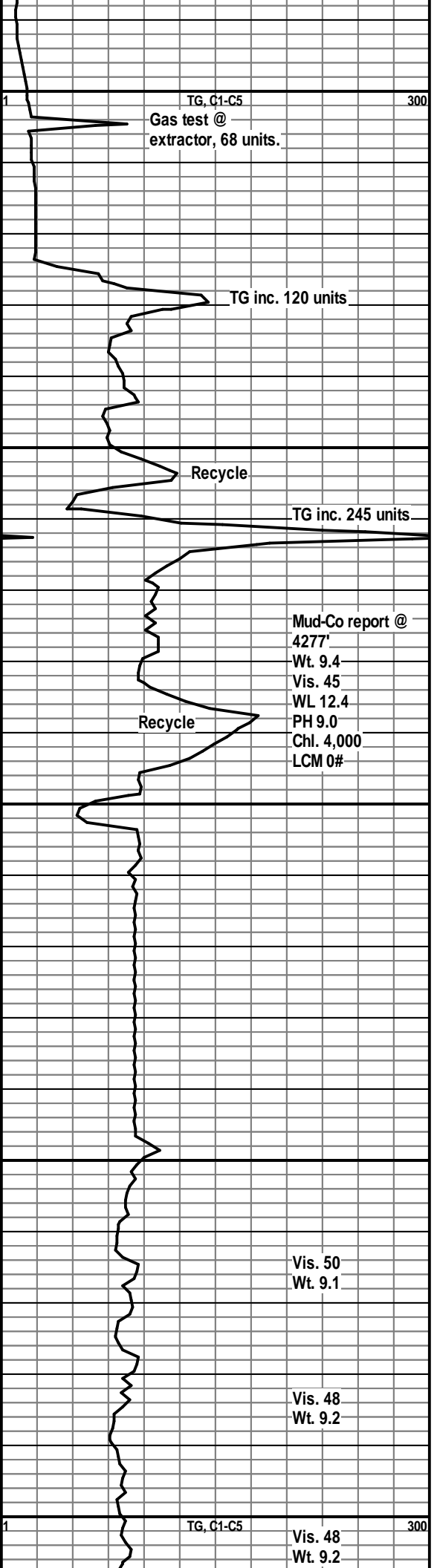
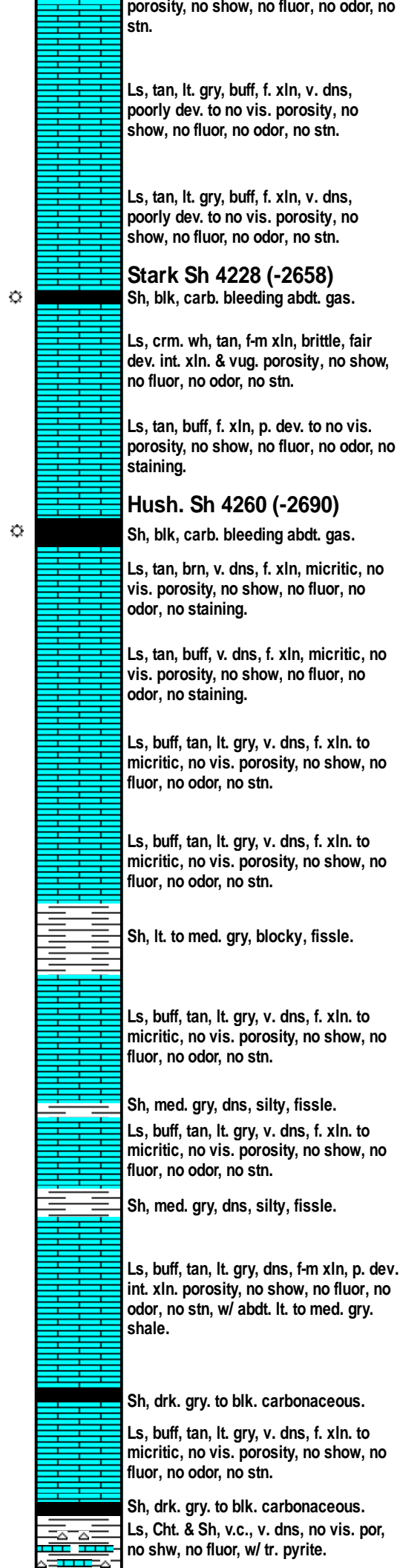
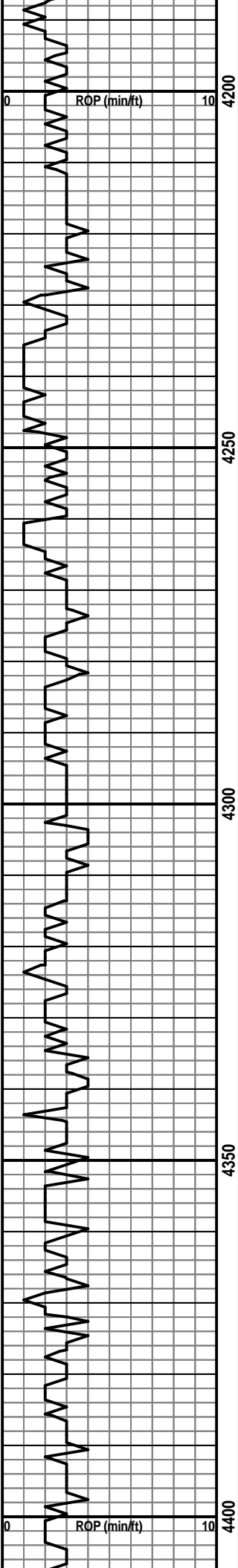
Ls, buff, crm. wh, f-m xln, chalky to sub-chalky, poorly dev. int. xln.

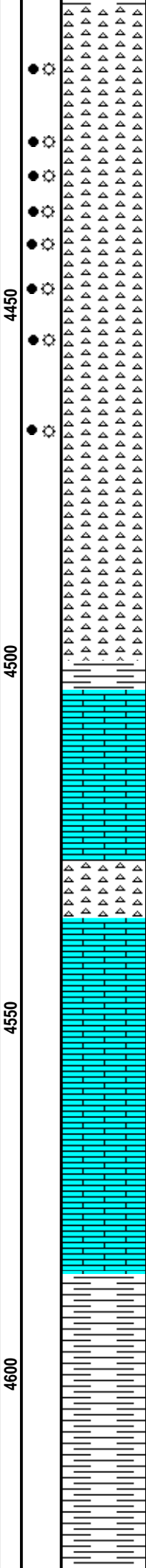
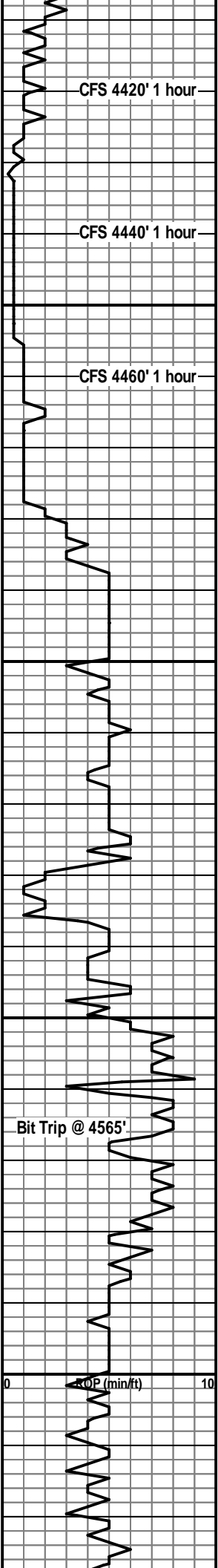


Vis. 48
Wt. 9.1

TG, C1-C5

Vis. 50
Wt. 9.2





Mississippian 4409 (-2839)
 Cht, wh, weathered, brittle, p-f dev. vug. porosity, fair shw. bleeding oil and gas, tan to brn. uneven stain, sli. odor, dull fluor.

Cht, wh, weathered, brittle, p-f dev. vug. porosity, sharp to granular, good shw. bleeding oil and gas, dull gold fluor, tan to brn. uneven stn, few saturated, good odor, few sli. dolomitic.

Cht, wh, fresh to weathered, sharp to granular, p-f dev. vug. porosity, fair shw. oil and gas, dull gold fluor, tan to brown uneven staining, good odor, sli. dolomitic.

Cht, wh, most fresh unweathered, 40% with porosity and fair shw oil and gas, dull fluor, fair odor, uneven tan to brown stain.

Cht, wh, most fresh unweathered, 40% with porosity and fair shw oil and gas, dull fluor, fair odor, uneven tan to brown stain.

Cht, wh, most fresh unweathered, 30% with porosity and fair show oil and gas, dull fluor, fair odor, uneven tan to brown stain, w/ abdt. gry. shale in sample.

Sh, gry-grn, gry, dns, fissle.

Ls, gry, tan, brn, f. xln to micritic, v. dns, no vis. porosity, no show, no fluor, no odor, no staining, w/ abdt. shale in samples.

Cht, wh, opaque, fresh, sharp, no vis. porosity, no show, no fluor, no odor, no staining.

Ls, buff, tan, brn, f. xln to micritic, v. dns, no vis. porosity, no show, no fluor, no odor, no staining, w/ abdt. shale in samples & crinoid frags.

Ls, buff, tan, brn, f. xln, micritic, v. dns, few foss, no vis. porosity, no show, no fluor, no odor, no stain.

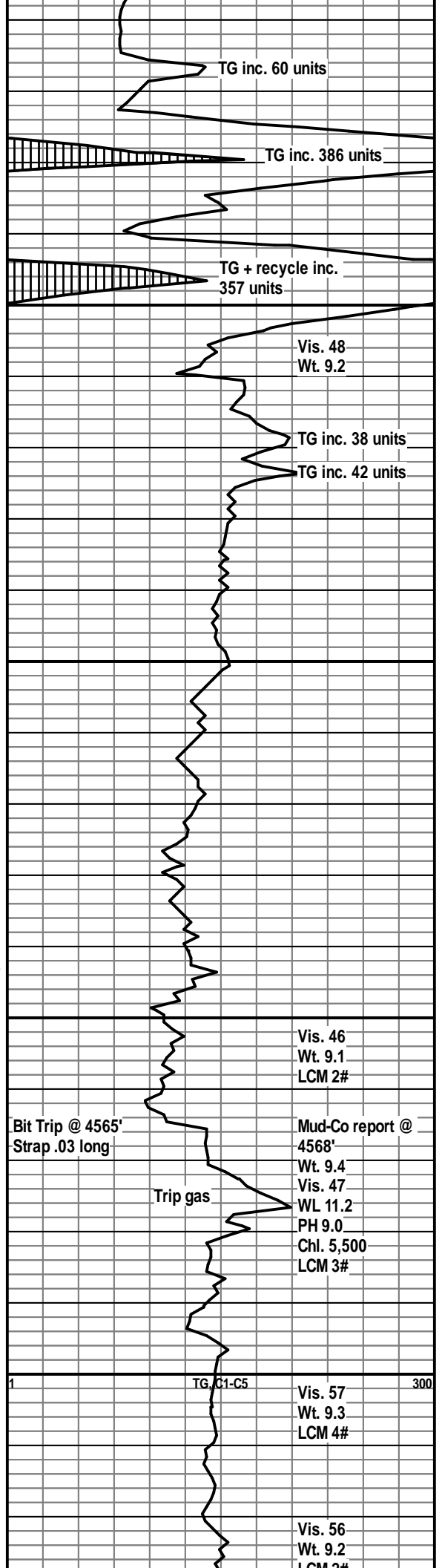
Ls, buff, tan, brn, f. xln, micritic, v. dns, few foss, no vis. porosity, no show, no fluor, no odor, no stain.

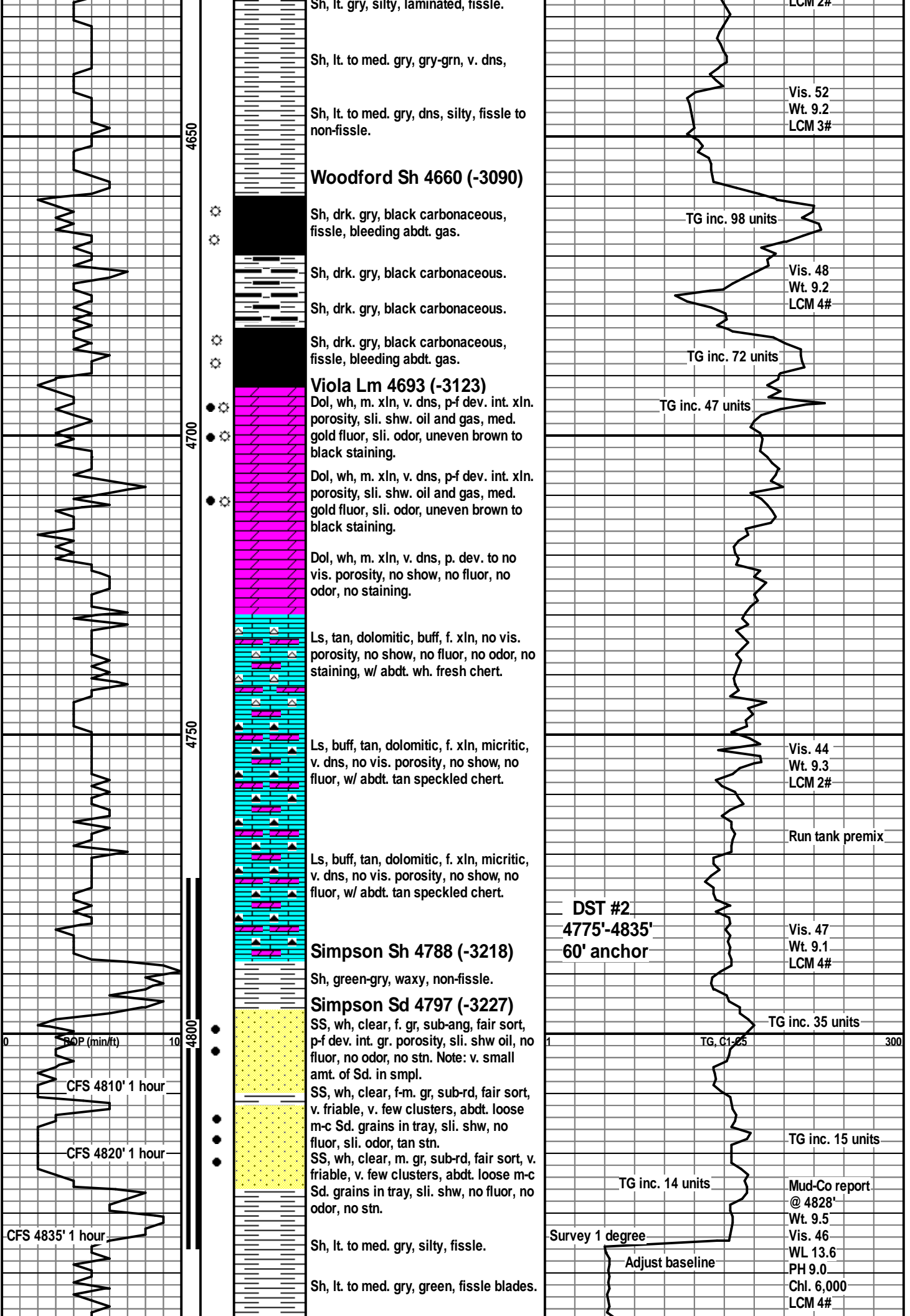
Kinderhook Sh 4587(-3017)

Sh, lt. to med. gry, gry-grn, v. dns, laminated, fissle.

Sh, lt. to med. gry, gry-grn, v. dns,

Sh, lt. to med. gry, gry-grn, v. dns, laminated, fissle, tr. pyrite.





Sh, lt. gry, silty, laminated, fissile.

Sh, lt. to med. gry, gry-grn, v. dns,

Sh, lt. to med. gry, dns, silty, fissile to non-fissile.

Woodford Sh 4660 (-3090)

Sh, drk. gry, black carbonaceous, fissile, bleeding abdt. gas.

Sh, drk. gry, black carbonaceous.

Sh, drk. gry, black carbonaceous.

Sh, drk. gry, black carbonaceous, fissile, bleeding abdt. gas.

Viola Lm 4693 (-3123)

Dol, wh, m. xln, v. dns, p-f dev. int. xln. porosity, sli. shw. oil and gas, med. gold fluor, sli. odor, uneven brown to black staining.

Dol, wh, m. xln, v. dns, p-f dev. int. xln. porosity, sli. shw. oil and gas, med. gold fluor, sli. odor, uneven brown to black staining.

Dol, wh, m. xln, v. dns, p. dev. to no vis. porosity, no show, no fluor, no odor, no staining.

Ls, tan, dolomitic, buff, f. xln, no vis. porosity, no show, no fluor, no odor, no staining, w/ abdt. wh. fresh chert.

Ls, buff, tan, dolomitic, f. xln, micritic, v. dns, no vis. porosity, no show, no fluor, w/ abdt. tan speckled chert.

Ls, buff, tan, dolomitic, f. xln, micritic, v. dns, no vis. porosity, no show, no fluor, w/ abdt. tan speckled chert.

Simpson Sh 4788 (-3218)

Sh, green-gry, waxy, non-fissile.

Simpson Sd 4797 (-3227)

SS, wh, clear, f. gr, sub-ang, fair sort, p-f dev. int. gr. porosity, sli. shw oil, no fluor, no odor, no stn. Note: v. small amt. of Sd. in smpl.

SS, wh, clear, f-m. gr, sub-rd, fair sort, v. friable, v. few clusters, abdt. loose m-c Sd. grains in tray, sli. shw, no fluor, sli. odor, tan stn.

SS, wh, clear, m. gr, sub-rd, fair sort, v. friable, v. few clusters, abdt. loose m-c Sd. grains in tray, sli. shw, no fluor, no odor, no stn.

Sh, lt. to med. gry, silty, fissile.

Sh, lt. to med. gry, green, fissile blades.

LCM 2#

Vis. 52
Wt. 9.2
LCM 3#

TG inc. 98 units

Vis. 48
Wt. 9.2
LCM 4#

TG inc. 72 units

TG inc. 47 units

Vis. 44
Wt. 9.3
LCM 2#

Run tank premix

DST #2
4775'-4835'
60' anchor

Vis. 47
Wt. 9.1
LCM 4#

TG inc. 35 units

TG, C1.25

TG inc. 15 units

TG inc. 14 units

Mud-Co report
@ 4828'
Wt. 9.5
Vis. 46
WL 13.6
PH 9.0
Chl. 6,000
LCM 4#

Survey 1 degree

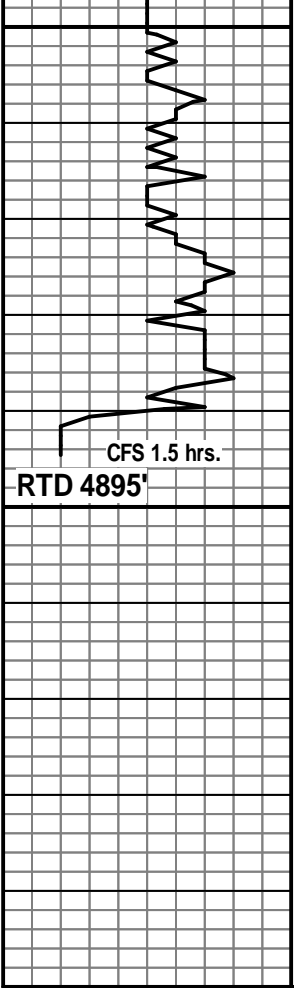
Adjust baseline

0 BOP (min/ft) 10

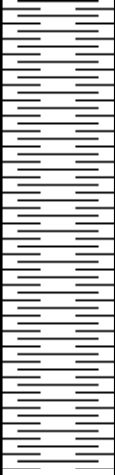
CFS 4810' 1 hour

CFS 4820' 1 hour

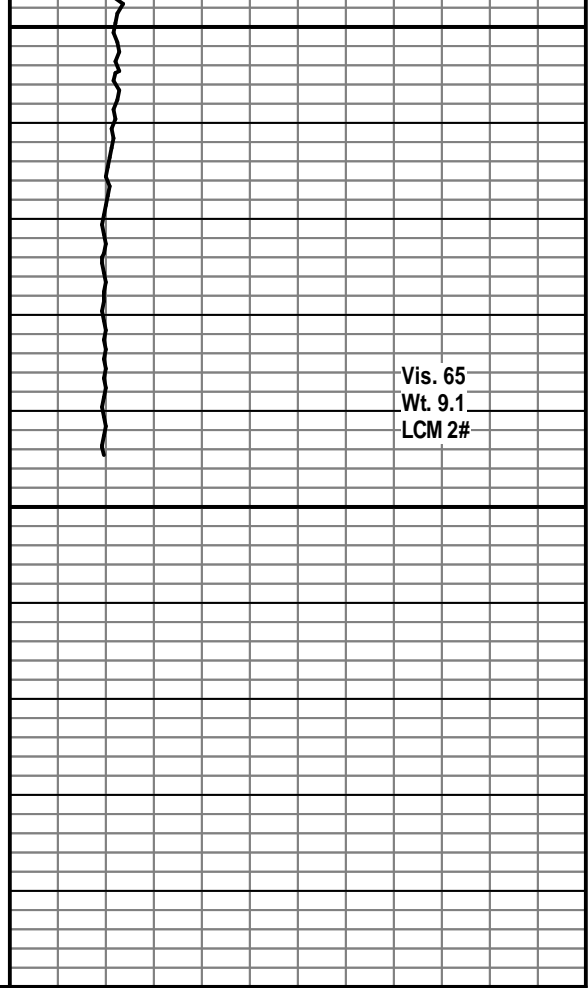
CFS 4835' 1 hour



4850
4900
50



Sh, lt. to med. gry, v. dns, fissle.
Sh, lt. to med. gry, green, fissle blades, tr. pyrite.
Sh, lt. to med. gry, green, v. dns, fissle blades, tr. pyrite.
Sh, lt. to med. gry, laminated.
Sh, lt. to med. gry, green, samples are 99% shale.



Vis. 65
Wt. 9.1
LCM 2#