



KANSAS CORPORATION COMMISSION 1100131
OIL & GAS CONSERVATION DIVISION

Form ACO-1

June 2009

Form Must Be Typed
Form must be Signed
All blanks must be Filled

WELL COMPLETION FORM
WELL HISTORY - DESCRIPTION OF WELL & LEASE

OPERATOR: License # _____

Name: _____

Address 1: _____

Address 2: _____

City: _____ State: _____ Zip: _____ + _____

Contact Person: _____

Phone: (_____) _____

CONTRACTOR: License # _____

Name: _____

Wellsite Geologist: _____

Purchaser: _____

Designate Type of Completion:

- New Well Re-Entry Workover
- Oil WSW SWD SIOW
- Gas D&A ENHR SIGW
- OG GSW Temp. Abd.
- CM (Coal Bed Methane)
- Cathodic Other (Core, Expl., etc.): _____

If Workover/Re-entry: Old Well Info as follows:

Operator: _____

Well Name: _____

Original Comp. Date: _____ Original Total Depth: _____

- Deepening Re-perf. Conv. to ENHR Conv. to SWD
- Conv. to GSW
- Plug Back: _____ Plug Back Total Depth _____
- Commingled Permit #: _____
- Dual Completion Permit #: _____
- SWD Permit #: _____
- ENHR Permit #: _____
- GSW Permit #: _____

Spud Date or Recompletion Date Date Reached TD Completion Date or Recompletion Date

API No. 15 - _____

Spot Description: _____

_____ - _____ - _____ Sec. _____ Twp. _____ S. R. _____ East West

_____ Feet from North / South Line of Section

_____ Feet from East / West Line of Section

Footages Calculated from Nearest Outside Section Corner:

- NE NW SE SW

County: _____

Lease Name: _____ Well #: _____

Field Name: _____

Producing Formation: _____

Elevation: Ground: _____ Kelly Bushing: _____

Total Depth: _____ Plug Back Total Depth: _____

Amount of Surface Pipe Set and Cemented at: _____ Feet

Multiple Stage Cementing Collar Used? Yes No

If yes, show depth set: _____ Feet

If Alternate II completion, cement circulated from: _____

feet depth to: _____ w/ _____ sx cmt.

Drilling Fluid Management Plan

(Data must be collected from the Reserve Pit)

Chloride content: _____ ppm Fluid volume: _____ bbls

Dewatering method used: _____

Location of fluid disposal if hauled offsite: _____

Operator Name: _____

Lease Name: _____ License #: _____

Quarter _____ Sec. _____ Twp. _____ S. R. _____ East West

County: _____ Permit #: _____

AFFIDAVIT

I am the affiant and I hereby certify that all requirements of the statutes, rules and regulations promulgated to regulate the oil and gas industry have been fully complied with and the statements herein are complete and correct to the best of my knowledge.

Submitted Electronically

KCC Office Use ONLY

- Letter of Confidentiality Received
Date: _____
- Confidential Release Date: _____
- Wireline Log Received
- Geologist Report Received
- UIC Distribution
- ALT I II III Approved by: _____ Date: _____



1100131

Operator Name: _____ Lease Name: _____ Well #: _____

Sec. _____ Twp. _____ S. R. _____ East West County: _____

INSTRUCTIONS: Show important tops and base of formations penetrated. Detail all cores. Report all final copies of drill stems tests giving interval tested, time tool open and closed, flowing and shut-in pressures, whether shut-in pressure reached static level, hydrostatic pressures, bottom hole temperature, fluid recovery, and flow rates if gas to surface test, along with final chart(s). Attach extra sheet if more space is needed. Attach complete copy of all Electric Wire-line Logs surveyed. Attach final geological well site report.

Drill Stem Tests Taken <input type="checkbox"/> Yes <input type="checkbox"/> No <i>(Attach Additional Sheets)</i> Samples Sent to Geological Survey <input type="checkbox"/> Yes <input type="checkbox"/> No Cores Taken <input type="checkbox"/> Yes <input type="checkbox"/> No Electric Log Run <input type="checkbox"/> Yes <input type="checkbox"/> No Electric Log Submitted Electronically <input type="checkbox"/> Yes <input type="checkbox"/> No <i>(If no, Submit Copy)</i> List All E. Logs Run:	<input type="checkbox"/> Log Formation (Top), Depth and Datum <input type="checkbox"/> Sample Name Top Datum
---	---

CASING RECORD <input type="checkbox"/> New <input type="checkbox"/> Used							
Report all strings set-conductor, surface, intermediate, production, etc.							
Purpose of String	Size Hole Drilled	Size Casing Set (In O.D.)	Weight Lbs. / Ft.	Setting Depth	Type of Cement	# Sacks Used	Type and Percent Additives

ADDITIONAL CEMENTING / SQUEEZE RECORD				
Purpose:	Depth Top Bottom	Type of Cement	# Sacks Used	Type and Percent Additives
_____ Perforate _____ Protect Casing _____ Plug Back TD _____ Plug Off Zone				

Shots Per Foot	PERFORATION RECORD - Bridge Plugs Set/Type Specify Footage of Each Interval Perforated	Acid, Fracture, Shot, Cement Squeeze Record <i>(Amount and Kind of Material Used)</i>	Depth

TUBING RECORD: Size: _____ Set At: _____ Packer At: _____ Liner Run: Yes No

Date of First, Resumed Production, SWD or ENHR. _____ Producing Method:
 Flowing Pumping Gas Lift Other *(Explain)* _____

Estimated Production Per 24 Hours	Oil Bbls.	Gas Mcf	Water Bbls.	Gas-Oil Ratio	Gravity
-----------------------------------	-----------	---------	-------------	---------------	---------

DISPOSITION OF GAS: <input type="checkbox"/> Vented <input type="checkbox"/> Sold <input type="checkbox"/> Used on Lease <i>(If vented, Submit ACO-18.)</i>	METHOD OF COMPLETION: <input type="checkbox"/> Open Hole <input type="checkbox"/> Perf. <input type="checkbox"/> Dually Comp. <input type="checkbox"/> Commingled <i>(Submit ACO-5)</i> <i>(Submit ACO-4)</i> <input type="checkbox"/> Other <i>(Specify)</i> _____	PRODUCTION INTERVAL: _____ _____
---	--	--

Form	ACO1 - Well Completion
Operator	Shelby Resources LLC
Well Name	Beren Trust 2-9
Doc ID	1100131

All Electric Logs Run

Dual Induction
Compensated Neutron
Micro
Sonic



DRILL STEM TEST REPORT

Prepared For: **Shelby Resources LLC**

2717 Canal Blvd. Suite C
Hays Kansas 67601

ATTN: Keith Reavis

Beren Trust 2-9

9-17s-14w-Barton

Start Date: 2012.07.02 @ 05:27:00

End Date: 2012.07.02 @ 12:19:00

Job Ticket #: 17691 DST #: 1

Superior Testers Enterprises LLC
PO Box 138 Great Bend KS 67530
1-800-792-6902

Printed: 2012.07.02 @ 10:34:02



DRILL STEM TEST REPORT

Shelby Resources LLC
 2717 Canal Blvd. Suite C
 Hays Kansas 67601
 ATTN: Keith Reavis

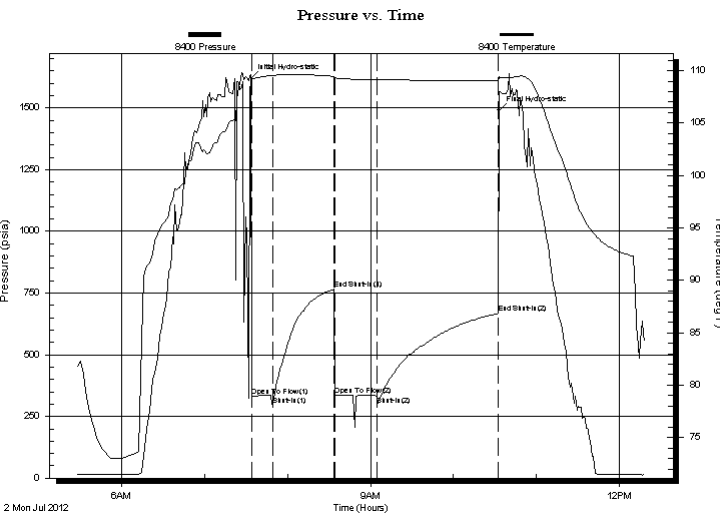
9-17s-14w-Barton
Beren Trust 2-9
 Job Ticket: 17691 **DST#: 1**
 Test Start: 2012.07.02 @ 05:27:00

GENERAL INFORMATION:

Formation: **Lansing D-F**
 Deviated: No Whipstock: ft (KB)
 Test Type: Conventional Bottom Hole (Initial)
 Time Tool Opened: 07:34:00
 Tester: Dustin Ellis
 Time Test Ended: 12:19:00
 Unit No: 3315-Great Bend-42
 Interval: **3270.00 ft (KB) To 3295.00 ft (KB) (TVD)**
 Reference Elevations: 1970.00 ft (KB)
 Total Depth: 3295.00 ft (KB) (TVD)
 1961.00 ft (CF)
 Hole Diameter: 7.88 inches
 Hole Condition: Fair
 KB to GR/CF: 9.00 ft

Serial #: 8400 Outside
 Press @ RunDepth: 294.09 psia @ 3292.00 ft (KB) Capacity: 5000.00 psia
 Start Date: 2012.07.02 End Date: 2012.07.02 Last Calib.: 2012.07.02
 Start Time: 05:27:00 End Time: 12:19:00 Time On Btm: 2012.07.02 @ 07:33:30
 Time Off Btm: 2012.07.02 @ 10:33:00

TEST COMMENT: 1st Open 15 minutes Weak surface blow
 1st Shut in 45 minutes No blow back
 2nd Open 30 minutes Very weak blow after 10 minutes died. Flushed no help.
 2nd Shut in 90 minutes No blow back



PRESSURE SUMMARY

Time (Min.)	Pressure (psia)	Temp (deg F)	Annotation
0	1620.43	109.60	Initial Hydro-static
1	332.99	109.19	Open To Flow (1)
16	295.22	109.53	Shut-In(1)
60	766.49	109.47	End Shut-In(1)
61	336.93	109.24	Open To Flow (2)
92	294.09	109.10	Shut-In(2)
179	667.62	109.02	End Shut-In(2)
180	1490.51	109.48	Final Hydro-static

Recovery

Length (ft)	Description	Volume (bbl)
540.00	Mud 100%	5.64

Gas Rates

Choke (inches)	Pressure (psia)	Gas Rate (Mcf/d)



DRILL STEM TEST REPORT

Shelby Resources LLC
 2717 Canal Blvd. Suite C
 Hays Kansas 67601
 ATTN: Keith Reavis

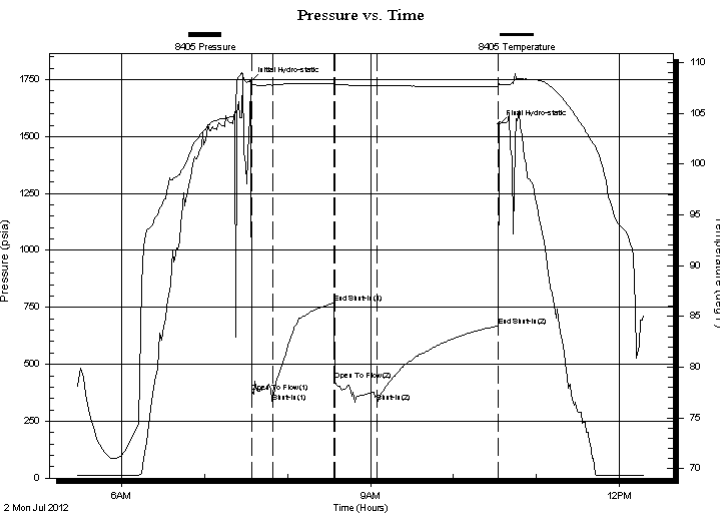
9-17s-14w-Barton
Beren Trust 2-9
 Job Ticket: 17691 **DST#: 1**
 Test Start: 2012.07.02 @ 05:27:00

GENERAL INFORMATION:

Formation: **Lansing D-F**
 Deviated: No Whipstock: ft (KB)
 Time Tool Opened: 07:34:00
 Time Test Ended: 12:19:00
 Interval: **3270.00 ft (KB) To 3295.00 ft (KB) (TVD)**
 Total Depth: 3295.00 ft (KB) (TVD)
 Hole Diameter: 7.88 inches Hole Condition: Fair
 Test Type: Conventional Bottom Hole (Initial)
 Tester: Dustin Ellis
 Unit No: 3315-Great Bend-42
 Reference Elevations: 1970.00 ft (KB)
 1961.00 ft (CF)
 KB to GR/CF: 9.00 ft

Serial #: 8405 Inside
 Press @ RunDepth: 668.42 psia @ 3291.00 ft (KB) Capacity: 5000.00 psia
 Start Date: 2012.07.02 End Date: 2012.07.02 Last Calib.: 2012.07.02
 Start Time: 05:27:00 End Time: 12:19:00 Time On Btm: 2012.07.02 @ 07:33:30
 Time Off Btm: 2012.07.02 @ 10:33:00

TEST COMMENT: 1st Open 15 minutes Weak surface blow
 1st Shut in 45 minutes No blow back
 2nd Open 30 minutes Very weak blow after 10 minutes died. Flushed no help.
 2nd Shut in 90 minutes No blow back



PRESSURE SUMMARY

Time (Min.)	Pressure (psia)	Temp (deg F)	Annotation
0	1741.90	108.11	Initial Hydro-static
1	375.72	107.86	Open To Flow (1)
16	334.40	107.78	Shut-In(1)
60	768.47	107.91	End Shut-In(1)
61	429.83	107.83	Open To Flow (2)
92	332.37	107.68	Shut-In(2)
179	668.42	107.62	End Shut-In(2)
180	1552.79	107.88	Final Hydro-static

Recovery

Length (ft)	Description	Volume (bbl)
540.00	Mud 100%	5.64

Gas Rates

	Choke (inches)	Pressure (psia)	Gas Rate (Mcf/d)



DRILL STEM TEST REPORT

TOOL DIAGRAM

Shelby Resources LLC
 2717 Canal Blvd. Suite C
 Hays Kansas 67601
 ATTN: Keith Reavis

9-17s-14w-Barton
Beren Trust 2-9
 Job Ticket: 17691 **DST#: 1**
 Test Start: 2012.07.02 @ 05:27:00

Tool Information

Drill Pipe:	Length: 3062.00 ft	Diameter: 3.80 inches	Volume: 42.95 bbl	Tool Weight: 2000.00 lb
Heavy Wt. Pipe:	Length: 0.00 ft	Diameter: 0.00 inches	Volume: 0.00 bbl	Weight set on Packer: 20000.00 lb
Drill Collar:	Length: 211.91 ft	Diameter: 2.25 inches	Volume: 1.04 bbl	Weight to Pull Loose: 100000.0 lb
			<u>Total Volume: 43.99 bbl</u>	Tool Chased 8.00 ft
Drill Pipe Above KB:	31.91 ft			String Weight: Initial 62000.00 lb
Depth to Top Packer:	3270.00 ft			Final 63000.00 lb
Depth to Bottom Packer:	ft			
Interval between Packers:	25.00 ft			
Tool Length:	53.00 ft			
Number of Packers:	2	Diameter: 6.75 inches		

Tool Comments:

Tool Description	Length (ft)	Serial No.	Position	Depth (ft)	Accum. Lengths
Shut-In Tool	5.00			3247.00	
Hydraulic Tool	5.00			3252.00	
Jars	6.00			3258.00	
Safety Joint	2.00			3260.00	
Packer	5.00			3265.00	28.00 Bottom Of Top Packer
Packer	5.00			3270.00	
Anchor	20.00			3290.00	
Recorder	1.00	8405	Inside	3291.00	
Recorder	1.00	8400	Outside	3292.00	
Bull Plug	3.00			3295.00	25.00 Bottom Packers & Anchor
Total Tool Length:	53.00				



DRILL STEM TEST REPORT

FLUID SUMMARY

Shelby Resources LLC
 2717 Canal Blvd. Suite C
 Hays Kansas 67601
 ATTN: Keith Reavis

9-17s-14w-Barton
Beren Trust 2-9
 Job Ticket: 17691 **DST#: 1**
 Test Start: 2012.07.02 @ 05:27:00

Mud and Cushion Information

Mud Type: Gel Chem	Cushion Type:	Oil API:	deg API
Mud Weight: 9.00 lb/gal	Cushion Length: ft	Water Salinity:	ppm
Viscosity: 58.00 sec/qt	Cushion Volume: bbl		
Water Loss: 8.00 in ³	Gas Cushion Type:		
Resistivity: ohm.m	Gas Cushion Pressure: psia		
Salinity: 3500.00 ppm			
Filter Cake: 1.00 inches			

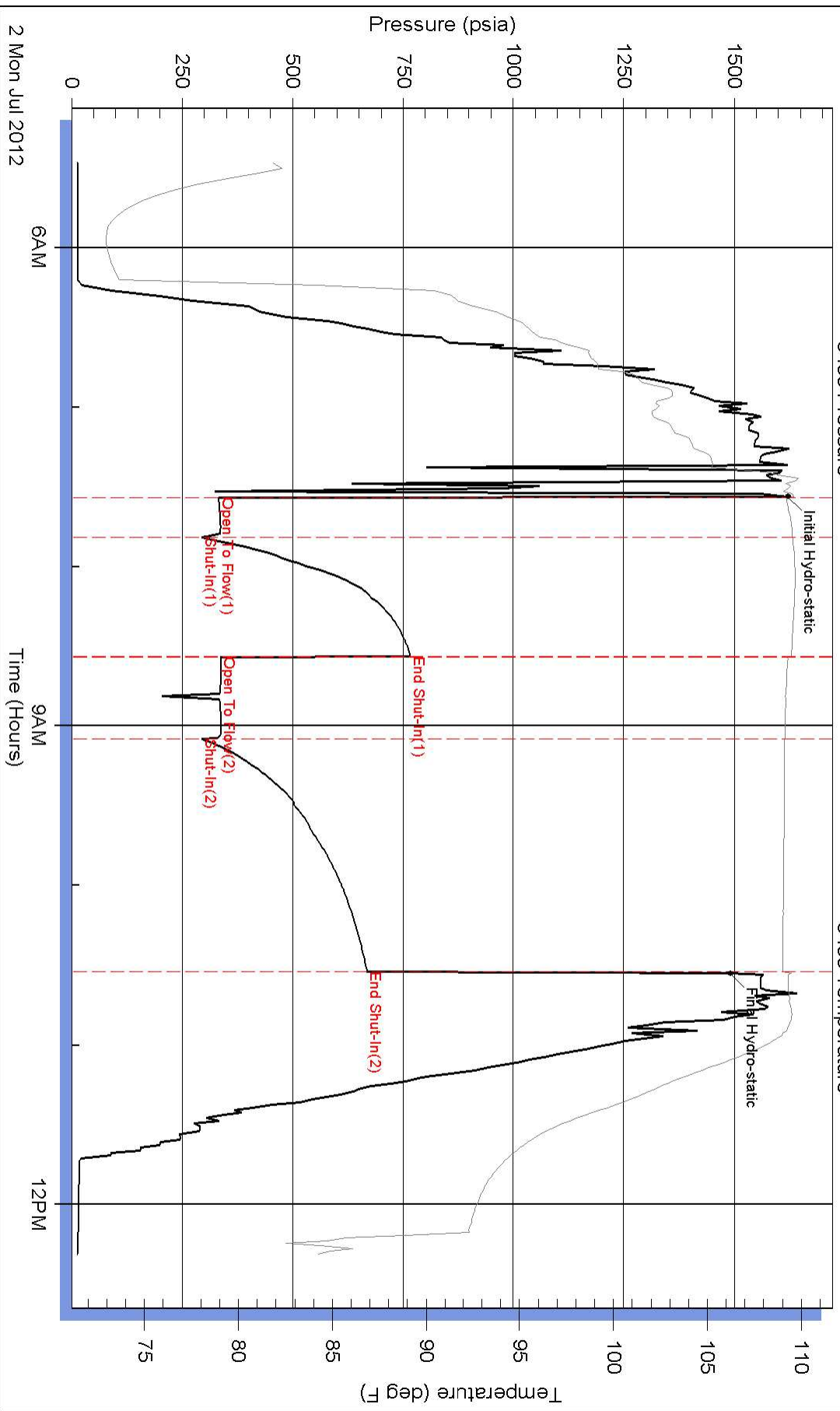
Recovery Information

Recovery Table

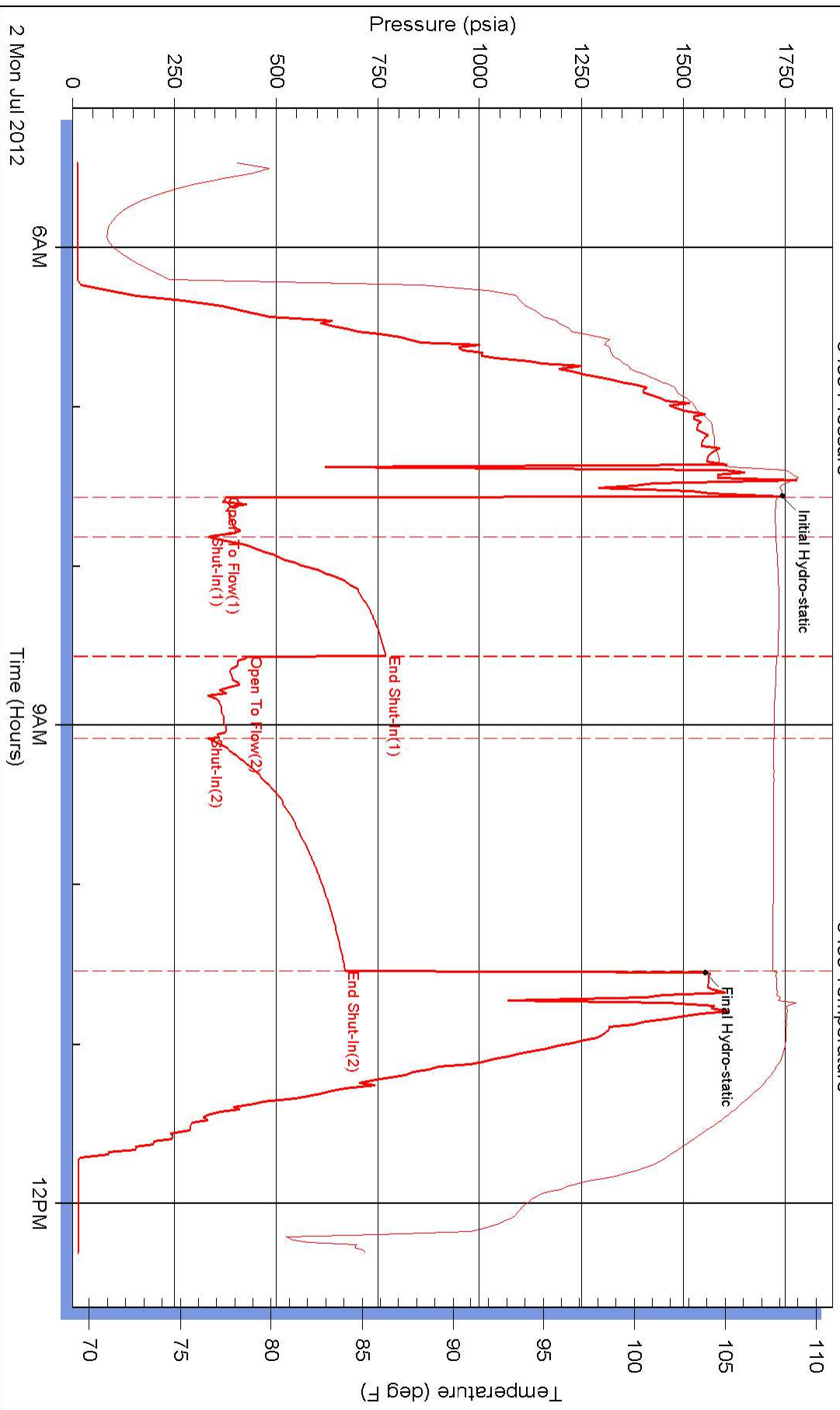
Length ft	Description	Volume bbl
540.00	Mud 100%	5.644

Total Length: 540.00 ft Total Volume: 5.644 bbl
 Num Fluid Samples: 0 Num Gas Bombs: 0 Serial #:
 Laboratory Name: Laboratory Location:
 Recovery Comments:

Pressure vs. Time



Pressure vs. Time





DRILL STEM TEST REPORT

Prepared For: **Shelby Resources LLC**

2717 Canal Blvd. Suite C
Hays Kansas 67601

ATTN: Keith Reavis

Beren Trust 2-9

9-17s-14w-Barton

Start Date: 2012.07.03 @ 02:06:00

End Date: 2012.07.03 @ 08:21:30

Job Ticket #: 17692 DST #: 2

Superior Testers Enterprises LLC
PO Box 138 Great Bend KS 67530
1-800-792-6902

Printed: 2012.07.03 @ 06:35:10

Shelby Resources LLC
9-17s-14w-Barton
Beren Trust 2-9
DST # 2
Lansing H-K
2012.07.03



DRILL STEM TEST REPORT

Shelby Resources LLC
 2717 Canal Blvd. Suite C
 Hays Kansas 67601
 ATTN: Keith Reavis

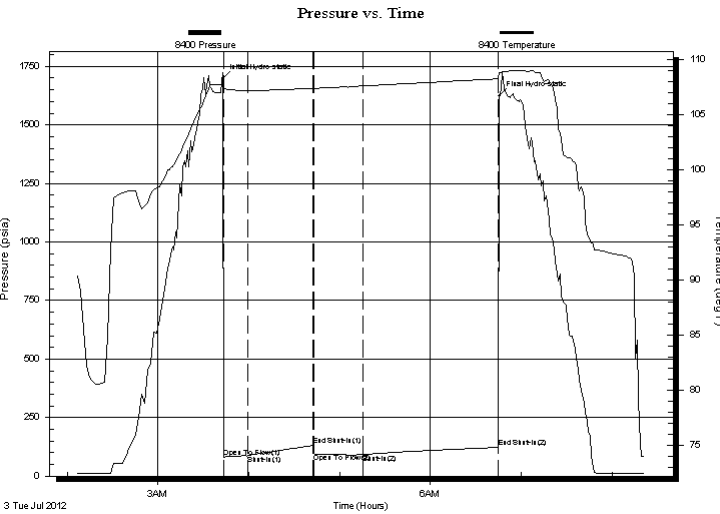
9-17s-14w-Barton
Beren Trust 2-9
 Job Ticket: 17692 **DST#: 2**
 Test Start: 2012.07.03 @ 02:06:00

GENERAL INFORMATION:

Formation: **Lansing H-K**
 Deviated: No Whipstock: ft (KB)
 Time Tool Opened: 03:43:30
 Time Test Ended: 08:21:30
 Test Type: Conventional Bottom Hole (Initial)
 Tester: Dustin Ellis
 Unit No: 3315-Great Bend-42
 Interval: **3353.00 ft (KB) To 3435.00 ft (KB) (TVD)**
 Total Depth: 3435.00 ft (KB) (TVD)
 Reference Elevations: 1970.00 ft (KB)
 1961.00 ft (CF)
 Hole Diameter: 7.88 inches Hole Condition: Fair
 KB to GR/CF: 9.00 ft

Serial #: 8400 Outside
 Press @ RunDepth: 91.38 psia @ 3432.31 ft (KB) Capacity: 5000.00 psia
 Start Date: 2012.07.03 End Date: 2012.07.03 Last Calib.: 2012.07.03
 Start Time: 02:06:00 End Time: 08:21:30 Time On Btm: 2012.07.03 @ 03:43:00
 Time Off Btm: 2012.07.03 @ 06:45:30

TEST COMMENT: 1st Open 15 minutes Very weak surface blow
 1st Shut in 45 minutes No blow back
 2nd Open 30 minutes Weak blow died off flushed no help.
 2nd Shut in 90 minutes No blow back



PRESSURE SUMMARY

Time (Min.)	Pressure (psia)	Temp (deg F)	Annotation
0	1697.64	107.85	Initial Hydro-static
1	80.23	107.33	Open To Flow (1)
17	86.97	107.17	Shut-In(1)
60	130.81	107.38	End Shut-In(1)
60	96.48	107.36	Open To Flow (2)
93	91.38	107.58	Shut-In(2)
182	123.01	108.24	End Shut-In(2)
183	1624.37	108.76	Final Hydro-static

Recovery

Length (ft)	Description	Volume (bbl)
5.00	Mud 100%	0.02

Gas Rates

Choke (inches)	Pressure (psia)	Gas Rate (Mcf/d)



DRILL STEM TEST REPORT

Shelby Resources LLC
 2717 Canal Blvd. Suite C
 Hays Kansas 67601
 ATTN: Keith Reavis

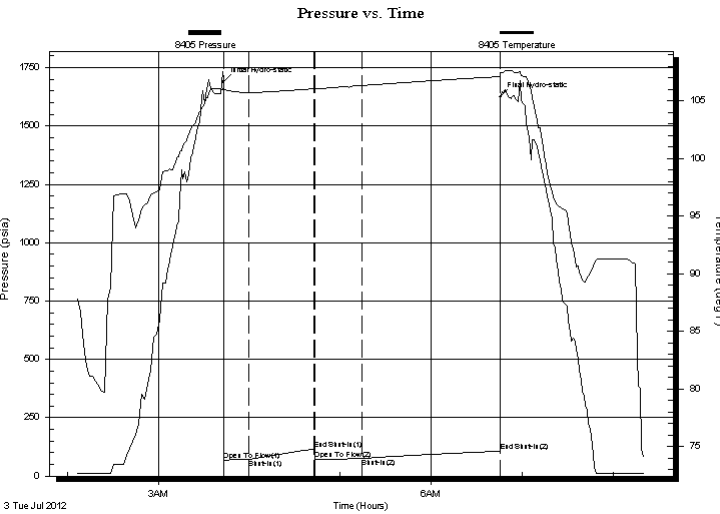
9-17s-14w-Barton
Beren Trust 2-9
 Job Ticket: 17692 **DST#: 2**
 Test Start: 2012.07.03 @ 02:06:00

GENERAL INFORMATION:

Formation: **Lansing H-K**
 Deviated: No Whipstock: ft (KB)
 Time Tool Opened: 03:43:30
 Time Test Ended: 08:21:30
 Test Type: Conventional Bottom Hole (Initial)
 Tester: Dustin Ellis
 Unit No: 3315-Great Bend-42
 Interval: **3353.00 ft (KB) To 3435.00 ft (KB) (TVD)**
 Total Depth: 3435.00 ft (KB) (TVD)
 Reference Elevations: 1970.00 ft (KB)
 1961.00 ft (CF)
 Hole Diameter: 7.88 inches Hole Condition: Fair
 KB to GR/CF: 9.00 ft

Serial #: 8405 Inside
 Press @ Run Depth: 107.11 psia @ 3431.31 ft (KB) Capacity: 5000.00 psia
 Start Date: 2012.07.03 End Date: 2012.07.03 Last Calib.: 2012.07.03
 Start Time: 02:06:00 End Time: 08:21:00 Time On Btm: 2012.07.03 @ 03:43:00
 Time Off Btm: 2012.07.03 @ 06:45:30

TEST COMMENT: 1st Open 15 minutes Very weak surface blow
 1st Shut in 45 minutes No blow back
 2nd Open 30 minutes Weak blow died off flushed no help.
 2nd Shut in 90 minutes No blow back



PRESSURE SUMMARY			
Time (Min.)	Pressure (psia)	Temp (deg F)	Annotation
0	1688.01	106.24	Initial Hydro-static
1	68.71	105.99	Open To Flow (1)
17	70.75	105.73	Shut-In(1)
60	115.68	106.06	End Shut-In(1)
61	72.26	106.06	Open To Flow (2)
91	76.16	106.34	Shut-In(2)
182	107.11	107.11	End Shut-In(2)
183	1624.56	107.42	Final Hydro-static

Recovery		
Length (ft)	Description	Volume (bbl)
5.00	Mud 100%	0.02

Gas Rates			
	Choke (inches)	Pressure (psia)	Gas Rate (Mcf/d)



DRILL STEM TEST REPORT

TOOL DIAGRAM

Shelby Resources LLC
 2717 Canal Blvd. Suite C
 Hays Kansas 67601
 ATTN: Keith Reavis

9-17s-14w-Barton
Beren Trust 2-9
 Job Ticket: 17692 **DST#: 2**
 Test Start: 2012.07.03 @ 02:06:00

Tool Information

Drill Pipe:	Length: 3141.00 ft	Diameter: 3.80 inches	Volume: 44.06 bbl	Tool Weight: 2000.00 lb
Heavy Wt. Pipe:	Length: 0.00 ft	Diameter: 0.00 inches	Volume: 0.00 bbl	Weight set on Packer: 20000.00 lb
Drill Collar:	Length: 211.91 ft	Diameter: 2.25 inches	Volume: 1.04 bbl	Weight to Pull Loose: 100000.0 lb
			<u>Total Volume: 45.10 bbl</u>	Tool Chased 0.00 ft
Drill Pipe Above KB:	19.91 ft			String Weight: Initial 65000.00 lb
Depth to Top Packer:	3353.00 ft			Final 65000.00 lb
Depth to Bottom Packer:	ft			
Interval between Packers:	82.31 ft			
Tool Length:	102.31 ft			
Number of Packers:	2	Diameter: 6.75 inches		

Tool Comments:

Tool Description	Length (ft)	Serial No.	Position	Depth (ft)	Accum. Lengths
Shut-In Tool	5.00			3338.00	
Hydraulic Tool	5.00			3343.00	
Packer	5.00			3348.00	20.00 Bottom Of Top Packer
Packer	5.00			3353.00	
Anchor	5.00			3358.00	
Change Over Sub	0.75			3358.75	
Drill Pipe	63.81			3422.56	
Change Over Sub	0.75			3423.31	
Anchor	7.00			3430.31	
Recorder	1.00	8405	Inside	3431.31	
Recorder	1.00	8400	Outside	3432.31	
Bull Plug	3.00			3435.31	82.31 Bottom Packers & Anchor

Total Tool Length: 102.31



DRILL STEM TEST REPORT

FLUID SUMMARY

Shelby Resources LLC
2717 Canal Blvd. Suite C
Hays Kansas 67601
ATTN: Keith Reavis

9-17s-14w-Barton
Beren Trust 2-9
Job Ticket: 17692 **DST#: 2**
Test Start: 2012.07.03 @ 02:06:00

Mud and Cushion Information

Mud Type: Gel Chem	Cushion Type:	Oil API:	deg API
Mud Weight: 9.00 lb/gal	Cushion Length: ft	Water Salinity:	ppm
Viscosity: 61.00 sec/qt	Cushion Volume: bbl		
Water Loss: 8.79 in ³	Gas Cushion Type:		
Resistivity: ohm.m	Gas Cushion Pressure: psia		
Salinity: 5300.00 ppm			
Filter Cake: 1.00 inches			

Recovery Information

Recovery Table

Length ft	Description	Volume bbl
5.00	Mud 100%	0.025

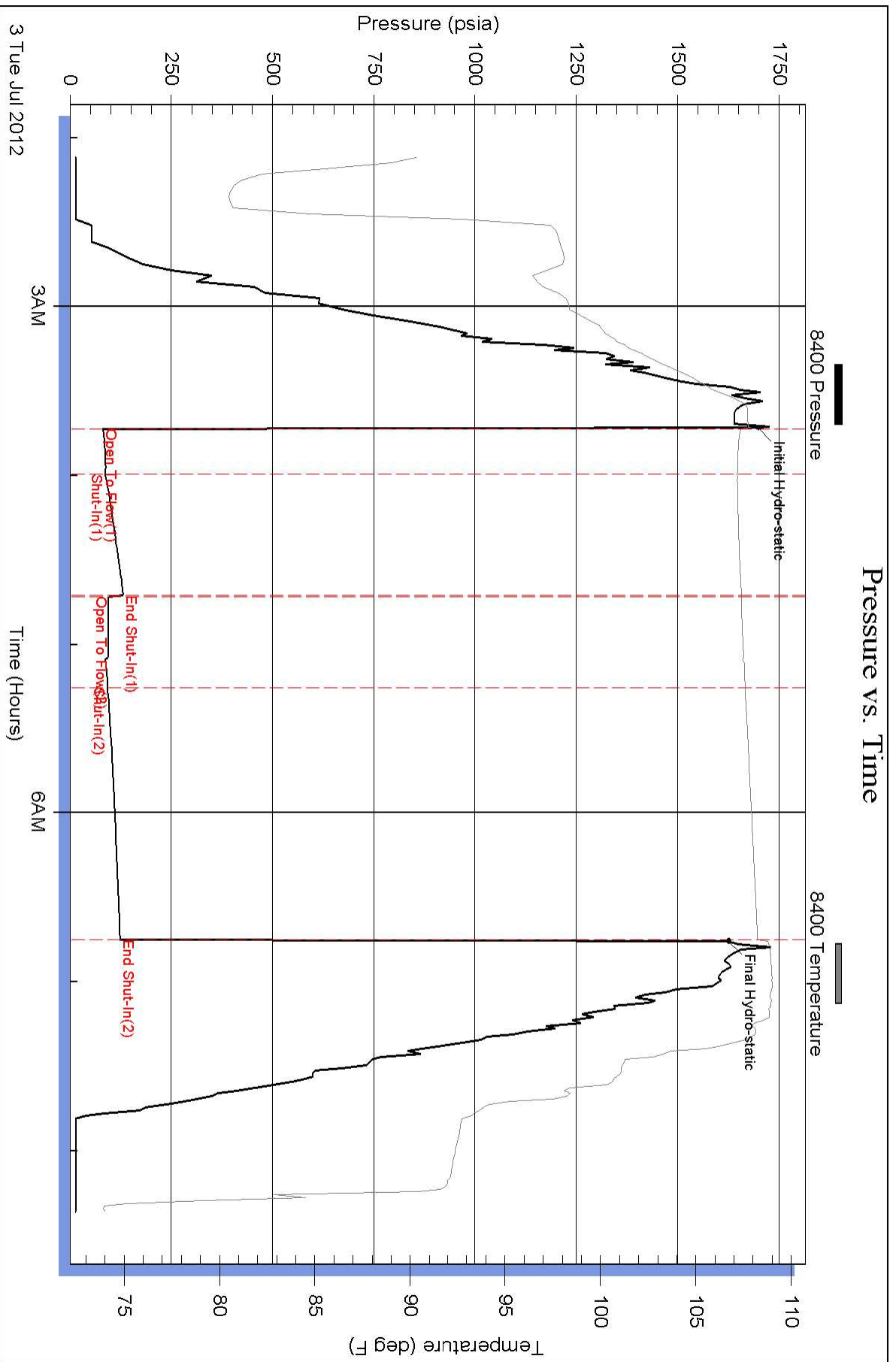
Total Length: 5.00 ft Total Volume: 0.025 bbl

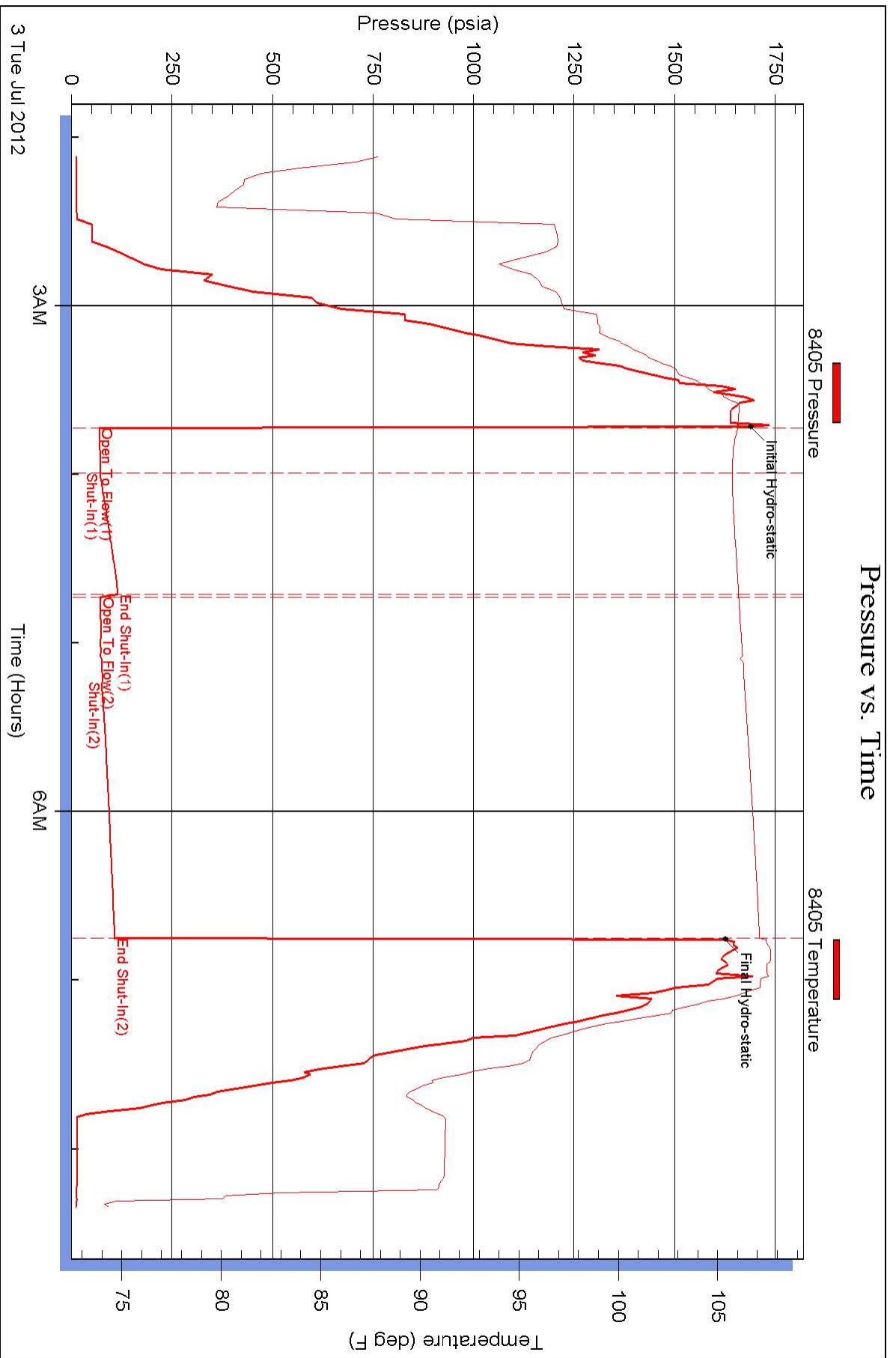
Num Fluid Samples: 0 Num Gas Bombs: 0 Serial #:

Laboratory Name: Laboratory Location:

Recovery Comments:

Pressure vs. Time







DRILL STEM TEST REPORT

Prepared For: **Shelby Resources LLC**

2717 Canal Blvd. Suite C
Hays Kansas 67601

ATTN: Keith Reavis

Beren Trust 2-9

9-17s-14w-Barton

Start Date: 2012.07.03 @ 06:24:00

End Date: 2012.07.03 @ 13:41:00

Job Ticket #: 17693 DST #: 3

Superior Testers Enterprises LLC
PO Box 138 Great Bend KS 67530
1-800-792-6902

Printed: 2012.07.04 @ 00:12:26



DRILL STEM TEST REPORT

Shelby Resources LLC
 2717 Canal Blvd. Suite C
 Hays Kansas 67601
 ATTN: Keith Reavis

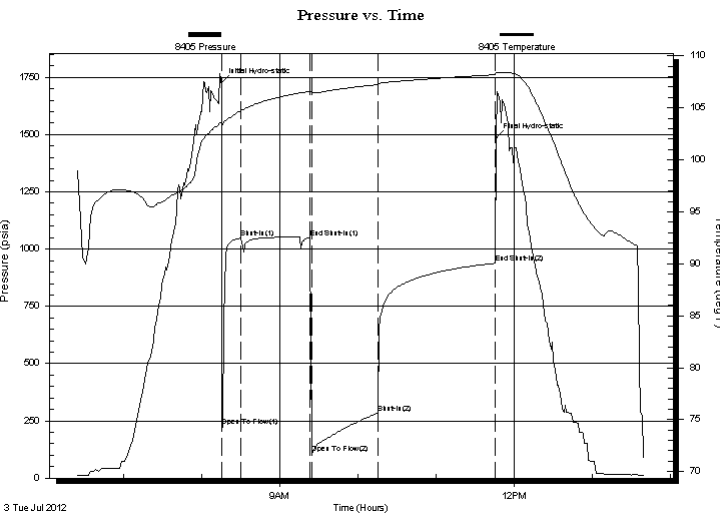
9-17s-14w-Barton
Beren Trust 2-9
 Job Ticket: 17693 **DST#: 3**
 Test Start: 2012.07.03 @ 06:24:00

GENERAL INFORMATION:

Formation: **Gonglomerate**
 Deviated: No Whipstock: ft (KB)
 Test Type: Conventional Bottom Hole (Initial)
 Time Tool Opened: 08:16:00 Tester: Dustin Ellis
 Time Test Ended: 13:41:00 Unit No: 3315-Great Bend-42
Interval: 3428.00 ft (KB) To 3479.00 ft (KB) (TVD) Reference Elevations: 1970.00 ft (KB)
 Total Depth: 3479.00 ft (KB) (TVD) 1961.00 ft (CF)
 Hole Diameter: 7.88 inches Hole Condition: Fair KB to GR/CF: 9.00 ft

Serial #: 8405 Inside
 Press @ RunDepth: 284.31 psia @ 3475.39 ft (KB) Capacity: 5000.00 psia
 Start Date: 2012.07.03 End Date: 2012.07.03 Last Calib.: 2012.07.03
 Start Time: 06:24:00 End Time: 13:41:00 Time On Btm: 2012.07.03 @ 08:15:30
 Time Off Btm: 2012.07.03 @ 11:46:30

TEST COMMENT: 1st Open 15 minutes Weak surface blow died off after 10 minutes.
 1st Shut in 45 minutes No blow back.
 2nd Open 60 minutes Dead blow flushed tool helped bottom bucket 11 minutes.
 2nd Shut 90 minutes Yes blow back.



PRESSURE SUMMARY

Time (Min.)	Pressure (psia)	Temp (deg F)	Annotation
0	1728.34	103.62	Initial Hydro-static
1	225.06	103.38	Open To Flow (1)
15	1048.01	104.73	Shut-In(1)
68	1049.12	106.59	End Shut-In(1)
69	106.26	106.44	Open To Flow (2)
120	284.31	107.24	Shut-In(2)
211	938.44	108.19	End Shut-In(2)
211	1486.64	108.42	Final Hydro-static

Recovery

Length (ft)	Description	Volume (bbl)
40.00	Clean oil 100%	0.20
50.00	Oil cut mud Oil 70% Mud 30%	0.25
124.00	Oil cut muddy w ater	0.63
0.00	1% Oil Mud 5% Water 94%	0.00
250.00	Mud cut w ater Mud 10% Water 90%	3.51

Gas Rates

Choke (inches)	Pressure (psia)	Gas Rate (Mcf/d)



DRILL STEM TEST REPORT

Shelby Resources LLC
 2717 Canal Blvd. Suite C
 Hays Kansas 67601
 ATTN: Keith Reavis

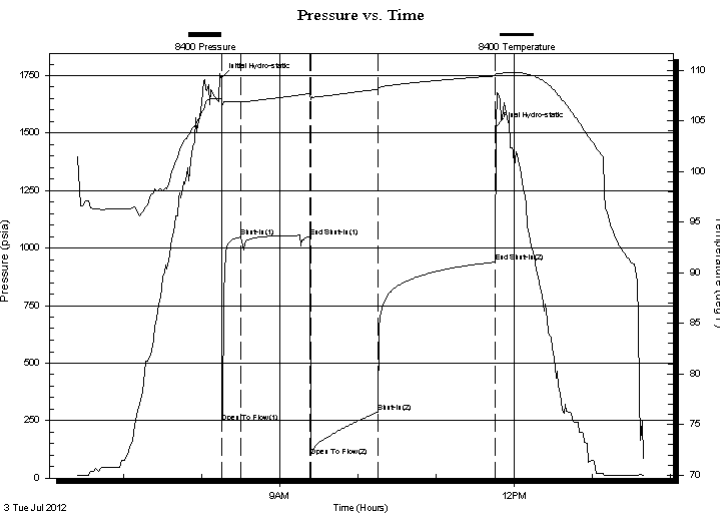
9-17s-14w-Barton
Beren Trust 2-9
 Job Ticket: 17693 **DST#: 3**
 Test Start: 2012.07.03 @ 06:24:00

GENERAL INFORMATION:

Formation: **Gonglomerate**
 Deviated: No Whipstock: ft (KB)
 Time Tool Opened: 08:16:00
 Time Test Ended: 13:41:00
 Interval: **3428.00 ft (KB) To 3479.00 ft (KB) (TVD)**
 Total Depth: 3479.00 ft (KB) (TVD)
 Hole Diameter: 7.88 inches Hole Condition: Fair
 Test Type: Conventional Bottom Hole (Initial)
 Tester: Dustin Ellis
 Unit No: 3315-Great Bend-42
 Reference Elevations: 1970.00 ft (KB)
 1961.00 ft (CF)
 KB to GR/CF: 9.00 ft

Serial #: 8400 Outside
 Press @ Run Depth: 939.54 psia @ 3476.39 ft (KB) Capacity: 5000.00 psia
 Start Date: 2012.07.03 End Date: 2012.07.03 Last Calib.: 2012.07.03
 Start Time: 06:24:00 End Time: 13:40:30 Time On Btm: 2012.07.03 @ 08:15:30
 Time Off Btm: 2012.07.03 @ 11:46:30

TEST COMMENT: 1st Open 15 minutes Weak surface blow died off after 10 minutes.
 1st Shut in 45 minutes No blow back.
 2nd Open 60 minutes Dead blow flushed tool helped bottom bucket 11 minutes.
 2nd Shut 90 minutes Yes blow back.



PRESSURE SUMMARY

Time (Min.)	Pressure (psia)	Temp (deg F)	Annotation
0	1742.87	107.19	Initial Hydro-static
1	245.21	106.69	Open To Flow (1)
15	1048.74	106.89	Shut-In(1)
68	1049.67	107.69	End Shut-In(1)
69	96.89	107.13	Open To Flow (2)
120	286.64	108.11	Shut-In(2)
211	939.54	109.44	End Shut-In(2)
211	1529.89	109.70	Final Hydro-static

Recovery

Length (ft)	Description	Volume (bbl)
40.00	Clean oil 100%	0.20
50.00	Oil cut mud Oil 70%Mud 30%	0.25
124.00	Oil cut muddy w ater	0.63
0.00	1% Oil Mud 5% Water 94%	0.00
250.00	Mud cut w ater Mud 10% Water 90%	3.51

Gas Rates

Choke (inches)	Pressure (psia)	Gas Rate (Mcf/d)



DRILL STEM TEST REPORT

TOOL DIAGRAM

Shelby Resources LLC
 2717 Canal Blvd. Suite C
 Hays Kansas 67601
 ATTN: Keith Reavis

9-17s-14w-Barton
Beren Trust 2-9
 Job Ticket: 17693 **DST#: 3**
 Test Start: 2012.07.03 @ 06:24:00

Tool Information

Drill Pipe:	Length: 3201.00 ft	Diameter: 3.80 inches	Volume: 44.90 bbl	Tool Weight: 2000.00 lb
Heavy Wt. Pipe:	Length: 0.00 ft	Diameter: 0.00 inches	Volume: 0.00 bbl	Weight set on Packer: 20000.00 lb
Drill Collar:	Length: 211.91 ft	Diameter: 2.25 inches	Volume: 1.04 bbl	Weight to Pull Loose: 70000.00 lb
			<u>Total Volume: 45.94 bbl</u>	Tool Chased 0.00 ft
Drill Pipe Above KB:	4.91 ft			String Weight: Initial 65000.00 lb
Depth to Top Packer:	3428.00 ft			Final 65000.00 lb
Depth to Bottom Packer:	ft			
Interval between Packers:	51.39 ft			
Tool Length:	71.39 ft			
Number of Packers:	2	Diameter: 6.75 inches		

Tool Comments:

Tool Description	Length (ft)	Serial No.	Position	Depth (ft)	Accum. Lengths
Shut-In Tool	5.00			3413.00	
Hydraulic Tool	5.00			3418.00	
Packer	5.00			3423.00	20.00 Bottom Of Top Packer
Packer	5.00			3428.00	
Anchor	5.00			3433.00	
Change Over Sub	0.75			3433.75	
Drill Pipe	31.89			3465.64	
Change Over Sub	0.75			3466.39	
Anchor	8.00			3474.39	
Recorder	1.00	8405	Inside	3475.39	
Recorder	1.00	8400	Outside	3476.39	
Bull Plug	3.00			3479.39	51.39 Bottom Packers & Anchor

Total Tool Length: 71.39



DRILL STEM TEST REPORT

FLUID SUMMARY

Shelby Resources LLC
2717 Canal Blvd. Suite C
Hays Kansas 67601
ATTN: Keith Reavis

9-17s-14w-Barton
Beren Trust 2-9
Job Ticket: 17693 **DST#: 3**
Test Start: 2012.07.03 @ 06:24:00

Mud and Cushion Information

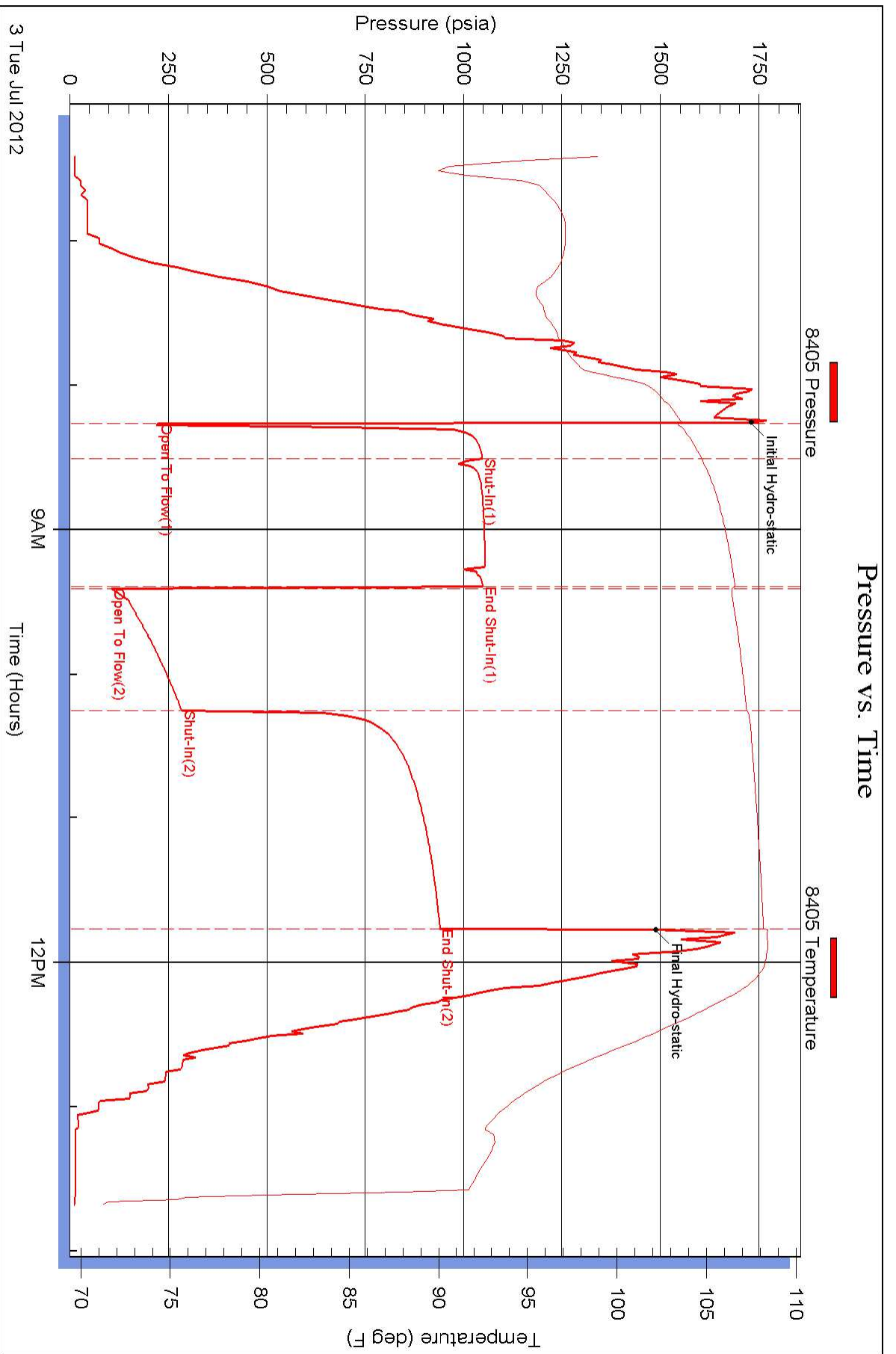
Mud Type: Gel Chem	Cushion Type:	Oil API:	deg API
Mud Weight: 9.00 lb/gal	Cushion Length: ft	Water Salinity:	ppm
Viscosity: 58.00 sec/qt	Cushion Volume: bbl		
Water Loss: 8.80 in ³	Gas Cushion Type:		
Resistivity: 0.20 ohm.m	Gas Cushion Pressure: psia		
Salinity: 6300.00 ppm			
Filter Cake: 1.00 inches			

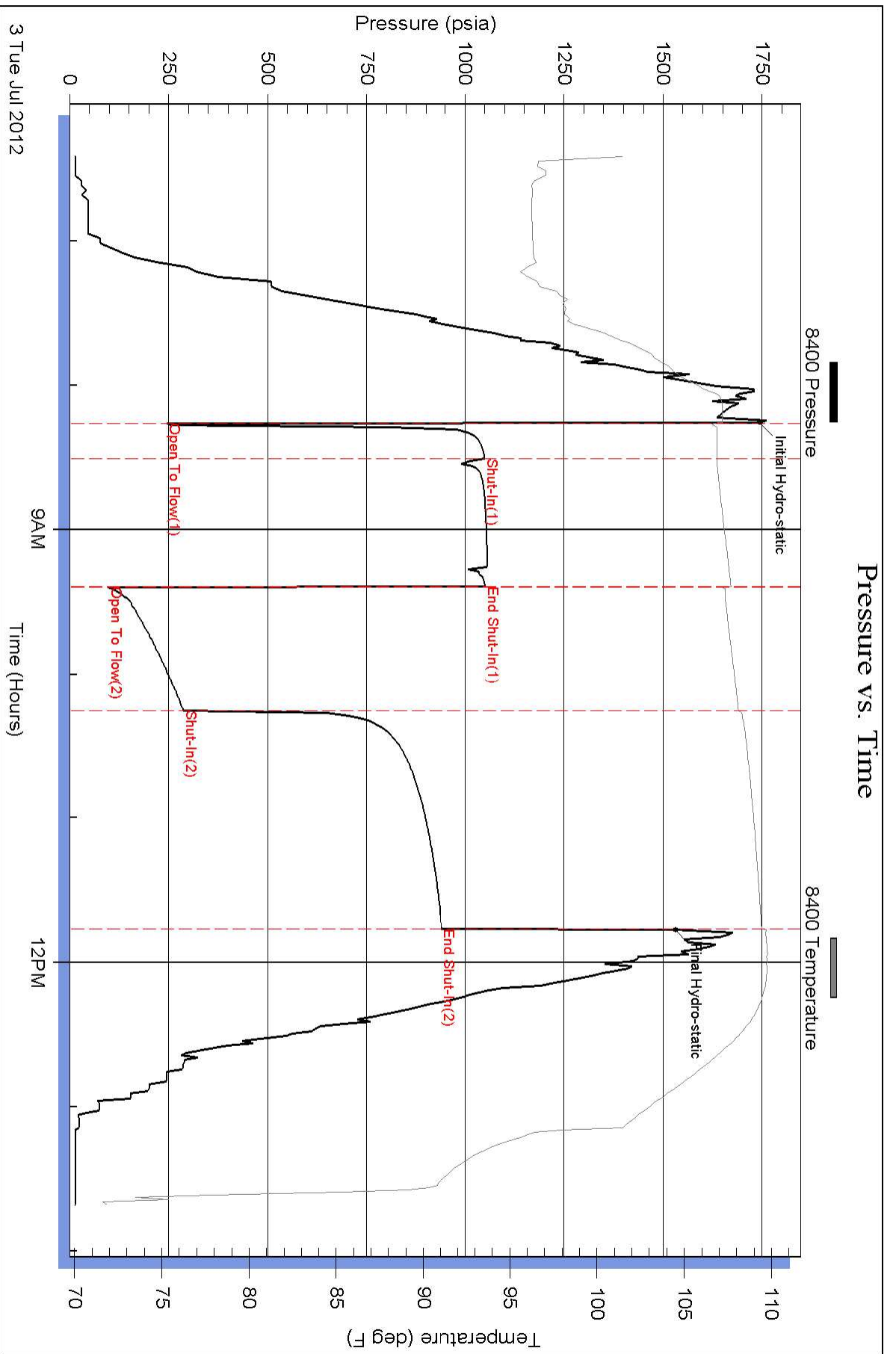
Recovery Information

Recovery Table

Length ft	Description	Volume bbl
40.00	Clean oil 100%	0.197
50.00	Oil cut mud Oil 70%Mud 30%	0.246
124.00	Oil cut muddy w ater	0.629
0.00	1% Oil Mud 5% Water 94%	0.000
250.00	Mud cut w ater Mud 10% Water 905	3.507

Total Length: 464.00 ft Total Volume: 4.579 bbl
Num Fluid Samples: 0 Num Gas Bombs: 0 Serial #:
Laboratory Name: Laboratory Location:
Recovery Comments:







DRILL STEM TEST REPORT

Prepared For: **Shelby Resources LLC**

2717 Canal Blvd. Suite C
Hays Kansas 67601

ATTN: Keith Reavis

Beren Trust 2-9

9-17s-14w-Barton

Start Date: 2012.07.04 @ 11:59:00

End Date: 2012.07.04 @ 17:42:30

Job Ticket #: 17694 DST #: 4

Superior Testers Enterprises LLC
PO Box 138 Great Bend KS 67530
1-800-792-6902

Printed: 2012.07.04 @ 15:57:13



DRILL STEM TEST REPORT

TOOL DIAGRAM

Shelby Resources LLC
 2717 Canal Blvd. Suite C
 Hays Kansas 67601
 ATTN: Keith Reavis

9-17s-14w-Barton
Beren Trust 2-9
 Job Ticket: 17694 **DST#: 4**
 Test Start: 2012.07.04 @ 11:59:00

Tool Information

Drill Pipe:	Length: 3285.00 ft	Diameter: 3.80 inches	Volume: 46.08 bbl	Tool Weight: 2000.00 lb
Heavy Wt. Pipe:	Length: 0.00 ft	Diameter: 0.00 inches	Volume: 0.00 bbl	Weight set on Packer: 20000.00 lb
Drill Collar:	Length: 211.96 ft	Diameter: 2.25 inches	Volume: 1.04 bbl	Weight to Pull Loose: 70000.00 lb
			<u>Total Volume: 47.12 bbl</u>	Tool Chased 1.00 ft
Drill Pipe Above KB:	26.96 ft			String Weight: Initial 65000.00 lb
Depth to Top Packer:	3498.00 ft			Final 65000.00 lb
Depth to Bottom Packer:	ft			
Interval between Packers:	10.00 ft			
Tool Length:	38.00 ft			
Number of Packers:	2	Diameter: 6.75 inches		

Tool Comments:

Tool Description	Length (ft)	Serial No.	Position	Depth (ft)	Accum. Lengths
Shut-In Tool	5.00			3475.00	
Hydraulic Tool	5.00			3480.00	
Jars	6.00			3486.00	
Safety Joint	2.00			3488.00	
Packer	5.00			3493.00	28.00 Bottom Of Top Packer
Packer	5.00			3498.00	
Anchor	5.00			3503.00	
Recorder	1.00	8405	Inside	3504.00	
Recorder	1.00	8400	Outside	3505.00	
Bull Plug	3.00			3508.00	10.00 Bottom Packers & Anchor
Total Tool Length:	38.00				



DRILL STEM TEST REPORT

FLUID SUMMARY

Shelby Resources LLC
2717 Canal Blvd. Suite C
Hays Kansas 67601
ATTN: Keith Reavis

9-17s-14w-Barton
Beren Trust 2-9
Job Ticket: 17694 **DST#: 4**
Test Start: 2012.07.04 @ 11:59:00

Mud and Cushion Information

Mud Type: Gel Chem	Cushion Type:	Oil API:	deg API
Mud Weight: 9.00 lb/gal	Cushion Length: ft	Water Salinity:	ppm
Viscosity: 58.00 sec/qt	Cushion Volume: bbl		
Water Loss: 8.80 in ³	Gas Cushion Type:		
Resistivity: 0.20 ohm.m	Gas Cushion Pressure: psia		
Salinity: 6300.00 ppm			
Filter Cake: 1.00 inches			

Recovery Information

Recovery Table

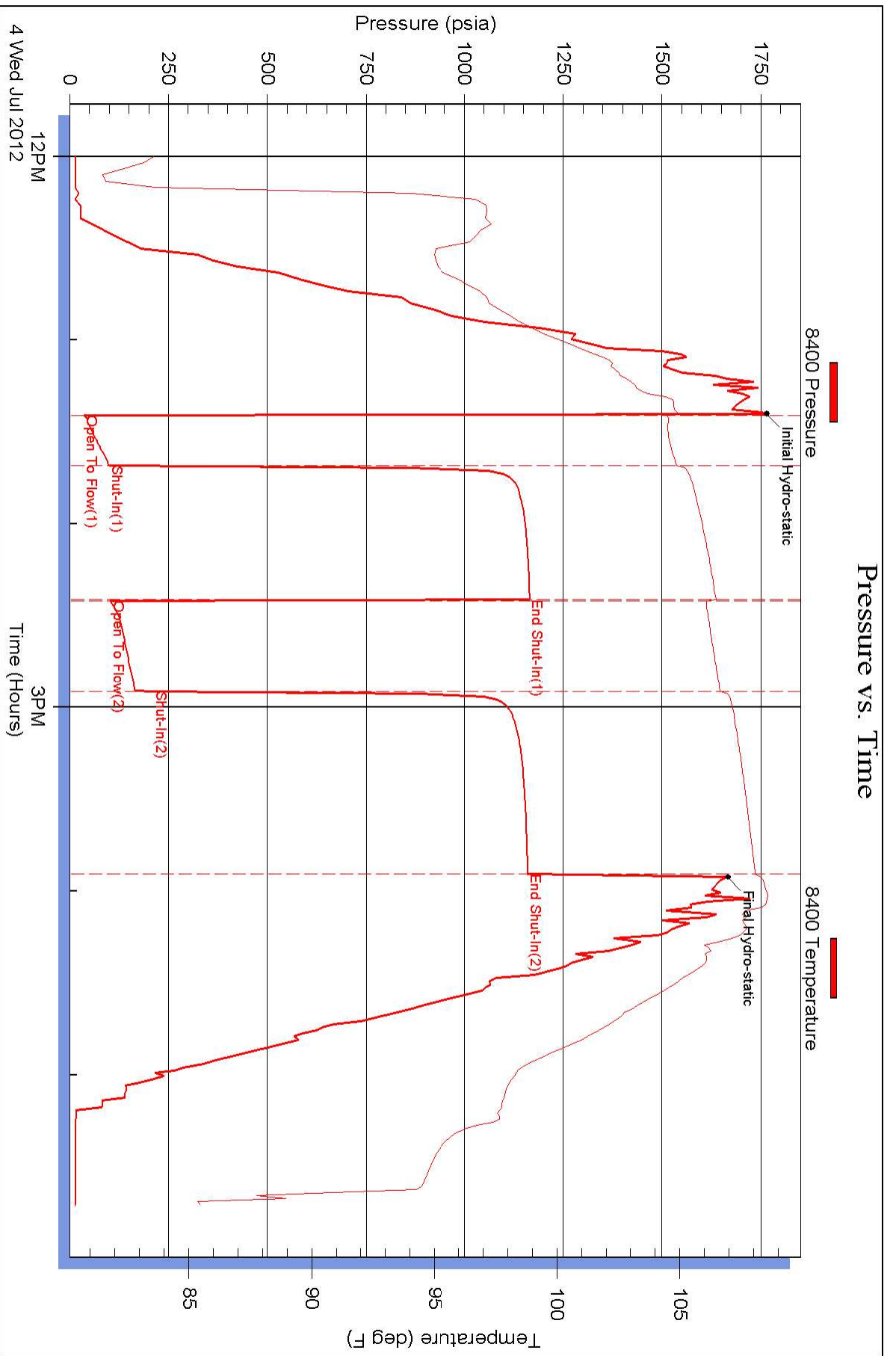
Length ft	Description	Volume bbl
278.00	Salt water 100%	1.969

Total Length: 278.00 ft Total Volume: 1.969 bbl

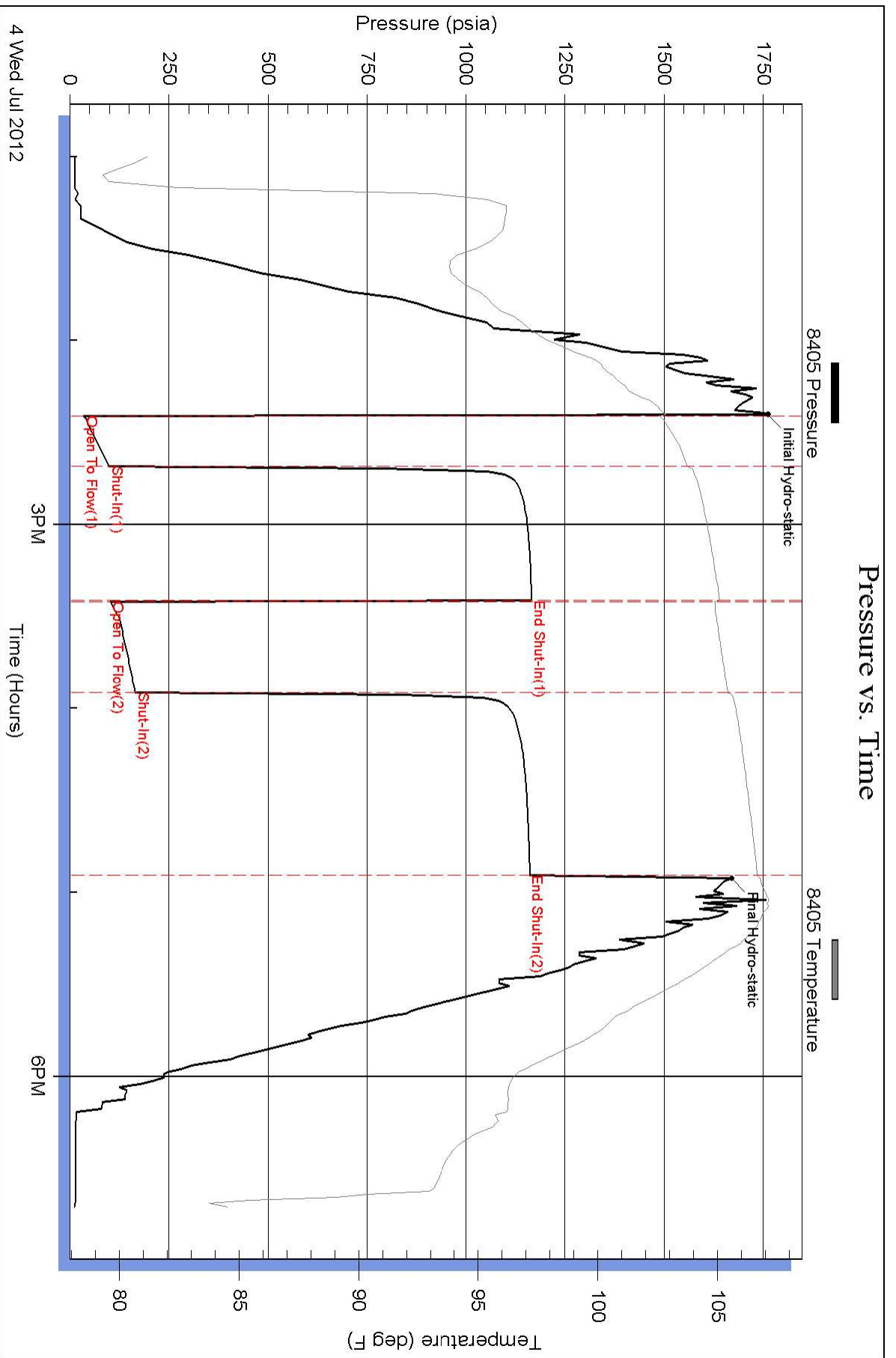
Num Fluid Samples: 0 Num Gas Bombs: 0 Serial #:

Laboratory Name: Laboratory Location:

Recovery Comments:



Pressure vs. Time



QUALITY OILWELL CEMENTING, INC.

Federal Tax I.D.# 20-2886107

Phone 785-483-2025
Cell 785-324-1041

Home Office P.O. Box 32 Russell, KS 67665

No. 697

Date	6-28-12	Sec.	9	Twp.	17	Range	14	County	Barton	State	KS	On Location		Finish	9:00p.m.
Lease	Beren Trust			Well No.	2-9			Location	Hwy 281 Stolsboro 2w 420 E into						

Contractor	Sterling #4			Owner	To Quality Oilwell Cementing, Inc. You are hereby requested to rent cementing equipment and furnish cementer and helper to assist owner or contractor to do work as listed.										
Type Job	Surface			Hole Size	12 1/4	T.D.	985	Charge To	Shelby Resources						
Csg.	8 5/8			Depth	921 983			Street							
Tbg. Size				Depth											
Tool				Depth											
Cement Left in Csg.	26.12			Shoe Joint	26.12			The above was done to satisfaction and supervision of owner agent or contractor.							
Meas Line				Displace	60 3/4 BC			Cement Amount Ordered	380 6/40.3 9/6 2 9/6 6 1						

EQUIPMENT

Pumptrk	15	No.	Cement Helper	Maig	Common	228
Bulktrk		No.	Driver	NICK	Poz. Mix	152
Bulktrk	412	No.	Driver	Beane Doug	Gel.	7

JOB SERVICES & REMARKS

Remarks:	Hulls
Rat Hole	Salt
Mouse Hole	Flowseal
Centralizers	Kol-Seal
Baskets	Mud CLR 48
D/V or Port Collar	CFL-117 or CD110 CAF 38

8 5/8 on bottom. Est. Circulation.
Mix 380 SK & Displace Plug.
Cement Circulated!

FLOAT EQUIPMENT

Guide Shoe	8 5/8
Centralizer	Butt weld shoe
Baskets	Baffle plate
AFU Inserts	Rubber Plug
Float Shoe	
Latch Down	

Pumptrk Charge	Long Surface
Mileage	23

X Signature *Jimmy S. Salas*

Tax	
Discount	
Total Charge	

Customer <i>SH2434-Resources</i>		Lease No.		Date	
Lease <i>BERON TRUST</i>		Well # <i>2-9</i>		<i>07-05-12</i>	
Field Order # <i>6511</i>	Station <i>PRATT KS</i>	Casing <i>D.P.</i>	Depth <i>3495'</i>	County <i>BARTON</i>	State <i>KS</i>
Type Job <i>CNW P.T.A.</i>			Formation	Legal Description <i>4-11-14</i>	

PIPE DATA		PERFORATING DATA		FLUID USED		TREATMENT RESUME		
Casing Size	Tubing Size	Shots/Ft		Acid		RATE	PRESS	ISIP
Depth	Depth	From	To	Pre Pad		Max		5 Min.
Volume	Volume	From	To	Pad		Min		10 Min.
Max Press	Max Press	From	To	Frac		Avg		15 Min.
Well Connection	Annulus Vol.	From	To			HHP Used		Annulus Pressure
Plug Depth	Packer Depth	From	To	Flush		Gas Volume		Total Load

Customer Representative	Station Manager <i>DAVE SCOTT</i>	Treater <i>Robert J. King</i>
-------------------------	-----------------------------------	-------------------------------

Service Units	<i>37900</i>	<i>33708</i>	<i>20920</i>	<i>19836</i>	<i>19918</i>				
Driver Names	<i>Sullivan</i>	<i>Melton</i>	<i>Phyllis</i>	<i>BEN</i>					

Time	Casing Pressure	Tubing Pressure	Bbls. Pumped	Rate	Service Log
<i>10:30</i>					<i>ON loc. Softly meetz P.T.A.</i>
					<i>3495' w/ 25 sk</i>
<i>12:42</i>			<i>10</i>	<i>3</i>	<i>SPACER</i>
<i>1</i>			<i>6</i>	<i>✓</i>	<i>CMT</i>
<i>12:55</i>			<i>45</i>	<i>7</i>	<i>DISC shot down w/ mud</i>
					<i>1035' w/ 40 sk</i>
<i>2:17</i>			<i>5</i>		<i>SPACER</i>
<i>5</i>			<i>10</i>		<i>CMT</i>
<i>2:25</i>			<i>7</i>		<i>DISC</i>
					<i>420' w/ 100 sk</i>
<i>2:48</i>			<i>5</i>		<i>SPACER</i>
<i>5</i>			<i>25</i>		<i>CMT</i>
<i>3:00</i>			<i>1.5</i>		<i>DISC</i>
<i>3:15</i>			<i>4</i>		<i>TOP 40'</i>
<i>3:30</i>			<i>7</i>		<i>RAT</i>
					<i>JOB complete</i>
					<i>Thank you</i>