



KANSAS CORPORATION COMMISSION 1100470
OIL & GAS CONSERVATION DIVISION

Form ACO-1

June 2009

Form Must Be Typed
Form must be Signed
All blanks must be Filled

WELL COMPLETION FORM
WELL HISTORY - DESCRIPTION OF WELL & LEASE

OPERATOR: License # _____

Name: _____

Address 1: _____

Address 2: _____

City: _____ State: _____ Zip: _____ + _____

Contact Person: _____

Phone: (_____) _____

CONTRACTOR: License # _____

Name: _____

Wellsite Geologist: _____

Purchaser: _____

Designate Type of Completion:

- New Well Re-Entry Workover
- Oil WSW SWD SIOW
- Gas D&A ENHR SIGW
- OG GSW Temp. Abd.
- CM (Coal Bed Methane)
- Cathodic Other (Core, Expl., etc.): _____

If Workover/Re-entry: Old Well Info as follows:

Operator: _____

Well Name: _____

Original Comp. Date: _____ Original Total Depth: _____

- Deepening Re-perf. Conv. to ENHR Conv. to SWD
- Conv. to GSW
- Plug Back: _____ Plug Back Total Depth _____
- Commingled Permit #: _____
- Dual Completion Permit #: _____
- SWD Permit #: _____
- ENHR Permit #: _____
- GSW Permit #: _____

Spud Date or Recompletion Date Date Reached TD Completion Date or Recompletion Date

API No. 15 - _____

Spot Description: _____

_____ - _____ - _____ Sec. _____ Twp. _____ S. R. _____ East West

_____ Feet from North / South Line of Section

_____ Feet from East / West Line of Section

Footages Calculated from Nearest Outside Section Corner:

- NE NW SE SW

County: _____

Lease Name: _____ Well #: _____

Field Name: _____

Producing Formation: _____

Elevation: Ground: _____ Kelly Bushing: _____

Total Depth: _____ Plug Back Total Depth: _____

Amount of Surface Pipe Set and Cemented at: _____ Feet

Multiple Stage Cementing Collar Used? Yes No

If yes, show depth set: _____ Feet

If Alternate II completion, cement circulated from: _____

feet depth to: _____ w/ _____ sx cmt.

Drilling Fluid Management Plan

(Data must be collected from the Reserve Pit)

Chloride content: _____ ppm Fluid volume: _____ bbls

Dewatering method used: _____

Location of fluid disposal if hauled offsite: _____

Operator Name: _____

Lease Name: _____ License #: _____

Quarter _____ Sec. _____ Twp. _____ S. R. _____ East West

County: _____ Permit #: _____

AFFIDAVIT

I am the affiant and I hereby certify that all requirements of the statutes, rules and regulations promulgated to regulate the oil and gas industry have been fully complied with and the statements herein are complete and correct to the best of my knowledge.

Submitted Electronically

KCC Office Use ONLY

- Letter of Confidentiality Received
Date: _____
- Confidential Release Date: _____
- Wireline Log Received
- Geologist Report Received
- UIC Distribution
- ALT I II III Approved by: _____ Date: _____



1100470

Operator Name: _____ Lease Name: _____ Well #: _____

Sec. _____ Twp. _____ S. R. _____ East West County: _____

INSTRUCTIONS: Show important tops and base of formations penetrated. Detail all cores. Report all final copies of drill stems tests giving interval tested, time tool open and closed, flowing and shut-in pressures, whether shut-in pressure reached static level, hydrostatic pressures, bottom hole temperature, fluid recovery, and flow rates if gas to surface test, along with final chart(s). Attach extra sheet if more space is needed. Attach complete copy of all Electric Wire-line Logs surveyed. Attach final geological well site report.

Drill Stem Tests Taken <input type="checkbox"/> Yes <input type="checkbox"/> No <i>(Attach Additional Sheets)</i> Samples Sent to Geological Survey <input type="checkbox"/> Yes <input type="checkbox"/> No Cores Taken <input type="checkbox"/> Yes <input type="checkbox"/> No Electric Log Run <input type="checkbox"/> Yes <input type="checkbox"/> No Electric Log Submitted Electronically <input type="checkbox"/> Yes <input type="checkbox"/> No <i>(If no, Submit Copy)</i> List All E. Logs Run:	<input type="checkbox"/> Log Formation (Top), Depth and Datum <input type="checkbox"/> Sample Name Top Datum
---	---

CASING RECORD <input type="checkbox"/> New <input type="checkbox"/> Used							
Report all strings set-conductor, surface, intermediate, production, etc.							
Purpose of String	Size Hole Drilled	Size Casing Set (In O.D.)	Weight Lbs. / Ft.	Setting Depth	Type of Cement	# Sacks Used	Type and Percent Additives

ADDITIONAL CEMENTING / SQUEEZE RECORD				
Purpose:	Depth Top Bottom	Type of Cement	# Sacks Used	Type and Percent Additives
_____ Perforate _____ Protect Casing _____ Plug Back TD _____ Plug Off Zone				

Shots Per Foot	PERFORATION RECORD - Bridge Plugs Set/Type Specify Footage of Each Interval Perforated	Acid, Fracture, Shot, Cement Squeeze Record <i>(Amount and Kind of Material Used)</i>	Depth

TUBING RECORD: Size: _____ Set At: _____ Packer At: _____ Liner Run: Yes No

Date of First, Resumed Production, SWD or ENHR. _____ Producing Method:
 Flowing Pumping Gas Lift Other *(Explain)* _____

Estimated Production Per 24 Hours	Oil Bbls.	Gas Mcf	Water Bbls.	Gas-Oil Ratio	Gravity
-----------------------------------	-----------	---------	-------------	---------------	---------

DISPOSITION OF GAS: <input type="checkbox"/> Vented <input type="checkbox"/> Sold <input type="checkbox"/> Used on Lease <i>(If vented, Submit ACO-18.)</i>	METHOD OF COMPLETION: <input type="checkbox"/> Open Hole <input type="checkbox"/> Perf. <input type="checkbox"/> Dually Comp. <input type="checkbox"/> Commingled <i>(Submit ACO-5)</i> <input type="checkbox"/> Other <i>(Specify)</i> _____ <input type="checkbox"/> Other <i>(Specify)</i> _____	PRODUCTION INTERVAL: _____ _____
---	--	--

LITHOLOGY STRIP LOG

WellSight Systems

Scale 1:240 (5"=100') Imperial

Well Name: Rose #1-6
Location: 2104' FSL & 1400' FWL, Sec. 6-T27S-R19W, Kiowa Co., KS.
Licence Number: 15-047-21611-0000 Region: Wildcat
Spud Date: 7/12/2012 Drilling Completed: 7/23/2012
Surface Coordinates: 2104' FSL & 1400' FWL, Sec. 6-T27S-R19W

Bottom Hole Same as Above
Coordinates:
Ground Elevation (ft): 2252' K.B. Elevation (ft): 2263'
Logged Interval (ft): 3800' To: 4930' Total Depth (ft): 4930'
Formation: Mississippian at Total Depth
Type of Drilling Fluid: Freshwater/Gel to 3121'; Chemical Gel 3121' to 4930'
Printed by MUD.LOG from WellSight Systems 1-800-447-1534 www.WellSight.com

OPERATOR

Company: Strata Exploration, Inc.
Address: P.O. Box 401
Fairfield, IL. 62837-0401

GEOLOGIST

Name: Jon D. Christensen
Company: Consulting Petroleum Geologist
Address: 9002 W. Silver Hollow St.
Wichita, KS. 67205-8856

Cores

None Taken

DSTs

DST #1(Lansing 'A') 4199' - 4215'(Corrected Depths to LOG) Test Times 15"-45"-45"-90" IFP Strong Blow Gas to Surface in 4 Min., FFP Strong Blow Gas to Surface throughout Gauged Max. 468 MCFG; REC: 125' WM(20%W, 80%M), 125' MW(80%W, 20%M) CI 109,000 Mud 6600; IFP 70-96#, ISIP 1432#, FFP 70-100#, FSIP 1397#, IHP 2020#, FHP 2013#, BHT 115 Deg F.

DST #2(Lansing 'B') 4230' - 4252'(Corrected Depths to LOG) Test Times 15"-45"-30"-60" IFP Strong Blow BOB/25 Sec., 2" Blowback on ISI, FFP Strong Blow BOB/4 Min., no Gas to surface, 10" Blowback on FSI; REC: 1100' Gas in Pipe, 155' GM&WCO(12%G, 45%O, 19%W, 24%M), 235' SOCMW(1%O, 93%W, 6%M) CI 86,000, Mud 4600; IFP 51-82#, ISIP 1410#, FFP 107-178#, FSIP 1391#, IHP 2022#, FHP 1998#, BHT 120 Deg. F.

DST #3(Miss. Chert/Dolo.) 4764' - 4823'(Corrected Depths to LOG) Test Times 15"-45"-15"-45" IFP Very Weak 0.5" Blow, FFP No Blow, no Blowback on SI's; REC: 5' Hvy. Drlg Mud, no shows; IFP 22-24#, ISIP 68#, FFP 25-25#, FSIP 39#, IHP 2322#, FHP 2264#, BHT 117 Deg. F.

DST #4(Miss. Chert/Dolo.) 4823' - 4839'(Corrected Depths to LOG) Test Times 15"-45"-30"-60" IFP Weak Blow built to 1.5", FFP Weak Blow built to 1.5", no Blowback on SI's; REC: 5' CO, 60' OCWM(24%O, 16%W, 60%M), 65' SOCMW(2%O, 50%W, 48%M), CI 83,000, Mud 8800; IFP 19-40#, ISIP 1520#, FFP 46-78#, FSIP 1528#, IHP 2348#, FHP 2331#, BHT 123 Deg F.

Comments

7/12/12 MIRU Sterling Drilling Co. Rig #2, Spud at 8:00 PM; 7/13/12 TD. 523' - Wiper Trip prior to setting Surface Casing; 7/14/12 TD. 523' - WOC; 7/15/12 Drilling at 1780'; 7/16/12 Drilling at 2833'; 7/17/12 Drilling at 3532'; 7/18/12 Drilling at 4150'; 7/19/12 TD. 4221' - TIH after DST #1; 7/20/12 Drilling at 4365'; 7/21/12 TD. 4708' - CFS; 7/22/12 TD. 4829' - TIH after DST #3; 7/23/12 RTD. 4930' - CCH for Logs; 7/24/12 RTD. 4930'/LTD. 4922' - LDDP for setting 5 1/2" Production Casing.

Set new 8 5/8"(23#) Surface Casing at 519' w/350 sx. cement(Basic Energy Services). Cement to Cellar. PD. 12:45 PM. 7/13/12. Cement fell 30' - cement through 1" with 75 additional sx. Completed 2:00 AM. 7/14/12.

Set new 5 1/2"(15.5#) Production Casing at 4922' w/250 sx. "Strata Blend" cement(Basic Energy Services). PD. 4:15 PM. 7/24/12.

Surveys: 0.25 Deg. at 523'(Surface Casing); 0.50 Deg. at 4221'(DST #1); 1.50 Deg. at 4829'(DST #3).

Pipe Strap at 4221'(DST #1): Strap 1.62' Short to the Board, no correction made to the Board.

After review of the Halliburton Logs, DST data, and positive indications of commercial amounts of hydrocarbons, the operator elected to set new 5 1/2" Production Casing for completion in the Lansing 'A' and 'B' zones.

LOG TOPS: Chase 2490(-227), Stotler Lmst. 3427(-1164), Howard 3628(-1365), Heebner Shale 4054(-1791), Toronto 4074(-1811), Brown Lmst. 4188(-1925), Lansing 'A' 4196(-1933), Lansing 'B' 4222(-1959), Lansing/KC. 'H' 4368(-2105), Stark Shale 4514(-2251), Base Kansas City 4595(-2332), Marmaton 4635(-2372), Pawnee 4688(-2425), Cherokee Shale 4729(-2466), Miss. Unconformity 4806(-2543), Miss. Osage Chert 4836(-2573), Basal Miss. Lmst. 4887(-2624).

NOTE: This log was shifted upward by 6' for correlation purposes with the Halliburton LOGS.

ROCK TYPES

- Anhy
- Bent
- Brec
- Cht

- Clyst
- Coal
- Congl
- Dol

- Gyp
- Igne
- Lmst
- Meta

- Mrlst
- Salt
- Shale
- Shcol

- Shgy
- Sltst
- Ss
- Till

ACCESSORIES

MINERAL

- Anhy
- Arggrn
- Arg
- Bent
- Bit
- Brecfrag
- Calc
- Carb
- Chtdk
- Chtlt
- Dol
- Feldspar
- Ferrpel
- Ferr
- Glau

- Gyp
- Hvymin
- Kaol
- Marl
- Minxl
- Nodule
- Phos
- Pyr
- Salt
- Sandy
- Silt
- Sil
- Sulphur
- Tuff

FOSSIL

- Algae
- Amph
- Belm
- Bioclst
- Brach
- Bryozoa
- Cephal
- Coral
- Crin
- Echin
- Fish
- Foram
- Fossil
- Gastro
- Oolite

- Ostra
- Pelec
- Pellet
- Pisolite
- Plant
- Strom

STRINGER

- Anhy
- Arg
- Bent
- Coal
- Dol
- Gyp
- Ls
- Mrst

- Sltstrg
- Ssstrg

TEXTURE

- Boundst
- Chalky
- Cryxln
- Earthy
- Finexln
- Grainst
- Lithogr
- Microxln
- Mudst
- Packst
- Wackest

OTHER SYMBOLS

POROSITY

- Earthy
- Fenest
- Fracture
- Inter
- Moldic
- Organic
- Pinpoint

- Vuggy

SORTING

- Well
- Moderate
- Poor

ROUNDING

- Rounded
- Subrnd
- Subang
- Angular

- Spotted
- Ques
- Dead

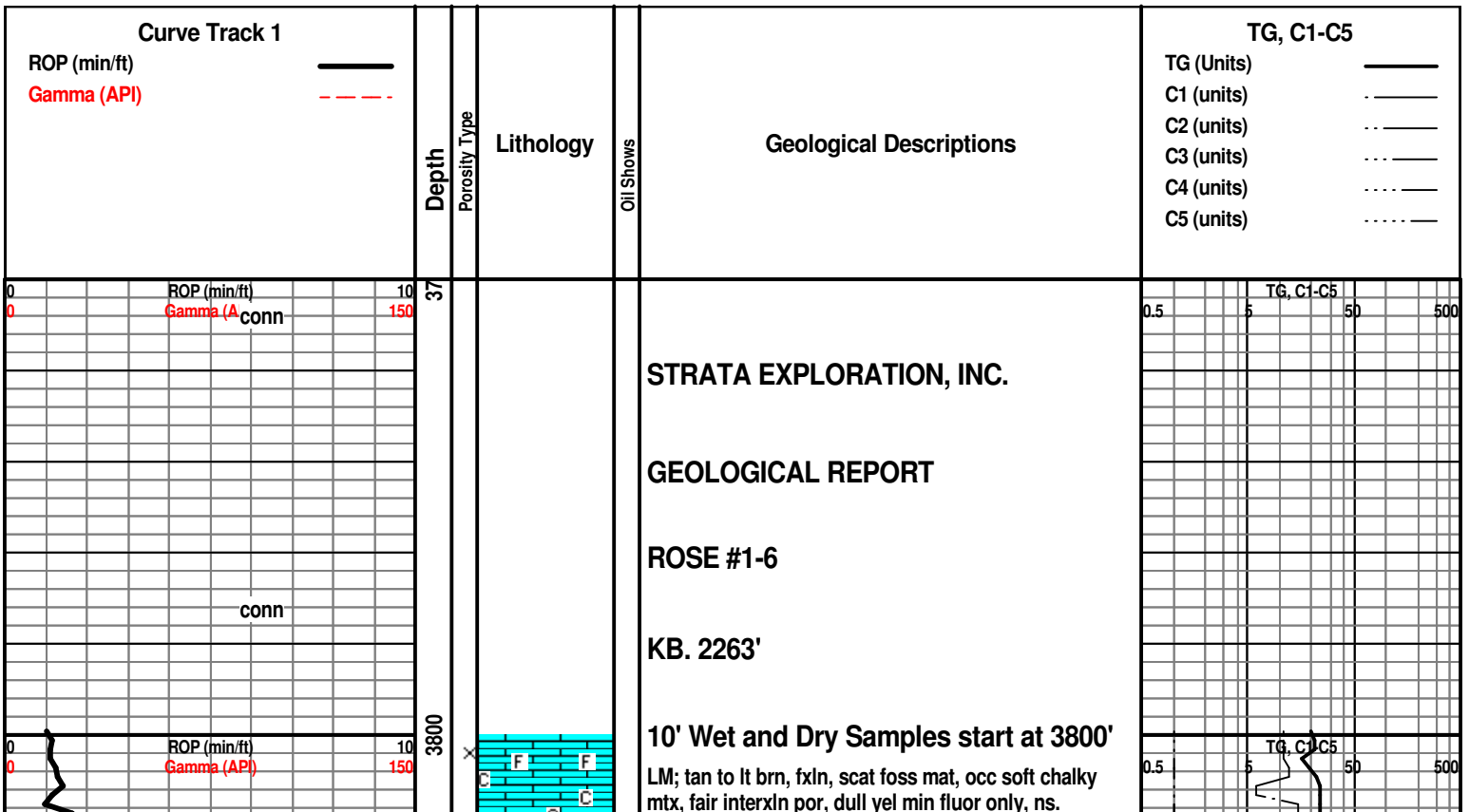
INTERVAL

- Core
- Dst

EVENT

- Rft
- Sidewall

- OIL SHOW Even



conn
Vis 50
Wt. 9.0
LCM 2#

WOB 40K
PP 960#
SPM 59
RPM 74

conn

conn
Vis 55
Wt. 9.2
LCM 2#

conn
WOB 40K
PP 850#
SPM 56
RPM 72

A.V. = 125.05

conn
Vis 50
Wt. 9.2
LCM 2#

WOB 40K
PP 875#
SPM 56
RPM 68
conn

ROP (min) conn
Gamma (A-γ)

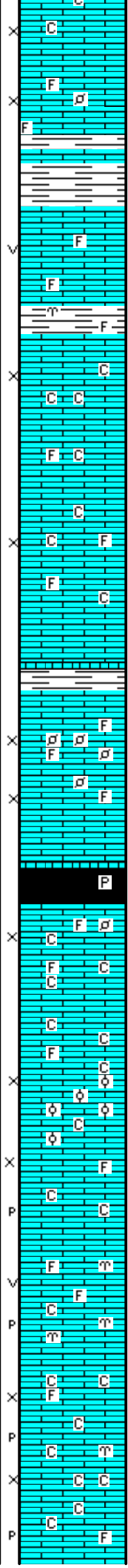
Vis 52
Wt. 9.3

3850

3900

3950

4000



LM; lt brn, tan, foss ip, scat med xln w/fair interxln por, occ wh cht, no fluor, ns.

SH; med to dk gy, platy to flakey

LM; tan, off wh, buff, foss ip, most well cem, interbdd foss lmst w/fair vug por, lt to med yel min fluor, no stn or odor, ns.

SH; grn, gy grn, platy, occ foss

LM; tan to cream, lt brn, f to med xln, fair to occ gd interxln por, minor soft chalky mtx, lt yel min fluor, no stn or odor, ns.

LM; tan to cream, off wh, f to med xln, fair to gd interxln por, scat foss mat, interbdd soft chalky lmst, lt yel min fluor, no stn or odor, ns.

POOR SAMPLES: 75 - 80% SHALE, REDUCE PUMP PRESSURE TO 55 TO 56 SPM = 850#

SH; med to dk gy, red, grn, slough shales

LM; tan to cream, lt brn, fxl n w/scat foss mat. occ finely pelletal, fair interpart por, lt yel min fluor, ns.

SH; blk, carb ip, platy, trc pyr

LM; wh, lt gy, off wh, f to med xln, some gran text, fair to gd interxln por, scat foss mat, lt to med yel fluor, some very chalky - soft, ns.

LM; off wh, tan, scat foss mat - finely pelletal ip, trc oolitic lmst, poor to fair interpart por, lt yel min fluor, scat chalky lmst, no stn or odor, ns.

LM; off wh, tan, foss ip, scat good vug and p-p por, lt yel min fluor, no stn or odor, no gas kick, barren, ns.

LM; tan to buff, off wh, f to med xln, fair to gd interxln w/occ p-p por, interbdd tan to lt brn hd micrite, decr. chalk and chalky mtx, lt yel fluor, occ tan to off wh cht, ns.

Gas Test at Extractor

Change Extractors @ 3912'

13 Unit Incr. Shale

TG

C1

C2

TG, C1-C5

0.5 5 50 500

LCM 2#

conn

WOB 40K
PP 875#
SPM 56
RPM 68

A.V.= 124.05

conn

Vis 49
Wt. 9.3
LCM 2#

CFS. at 4086'

conn

WOB 40K
PP 880#
SPM 56
RPM 68

Vis 51
Wt. 9.3+
LCM 1#

conn

WOB 33-35K
PP 880#
SPM 56
RPM 65-70

Vis 48
Wt. 9.4
LCM 1#

A.V.= 124.05

conn

ROP (min)
Gamma (A)

DST #1
Lansing 'A'
4199' - 4215'
Corrected
CFS. at 4215'

MudCo. Mud
Check at 4221'
Vis 54 Wt. 9.2
WL 13.0 Cl 6200
PH 10.0 LCM 1#

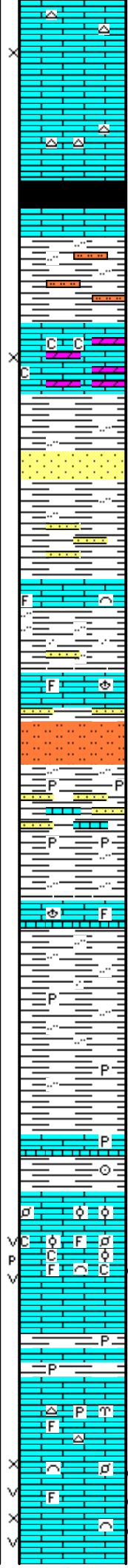
DST #2
Lansing 'B'
4230' - 4252'
Corrected

4050

4100

4150

4200



LM; med brn, dense, scat tan/off wh cht, no vis por, tite

HEEBNER SHALE 4054(-1791)

SH; blk, carb ip, platy, trc gas bubb.
LM; med to dk brn, v. hd, blocky, tite

SH; grn, gy grn, silty w/some interbdd sltst

TORONTO 4074(-1811)

LM; wh, off wh, fxln to sucrosic text, partly dolomitic, fair interxln por, lt yel fluor, occ soft chalky mtz, no vis stn, no odor, no vis gas bubbles, no gas kick, barren

DOUGLAS SHALE 4084(-1821)

SH; lt gy, soft, silty ip, interbdd vf to fgr qtz ss, tite mica ss, platy

SH; lt to med gy, grn, silty w/rare vf gr qtz ss strngs.

LM; lt to med brn, foss, hd, blocky, no vis por, lt yel min fluor, ns.

SH; lt gy, gy grn, silty to rarely sandy, occ mica

LM; lt brn, occ med brn, foss, dense, blocky, scat hd vf gr qtz ss, tite

SLTST; lt gy, sandy ip, firm

SH; lt gy, sandy to occ lmy, v. firm, platy, scat dissem pyr

LM; med brn, foss, hd, lt yel min fluor, tite

SH; lt to med gy, occ silty, firm, rarely pyr, very flakey, sloughing badly

BROWN LMST. 4188(-1925)

LM; med to occ dk brn, micritic, hd, trc pyr

LANSING 'A' 4196(-1933)

LM; wh, off wh, foss ip, rare small oolites, most w/fair to occ gd p-p and small vug por, med yel fluor, faint sweet gas odor, gas bubbles, chalky mtz, occ cse spar calc xtals, trc med brn oil stn, trc. lt clr FO. droplets, pred. gas show

DST #1: Lansing 'A' 4199' - 4215'

Corrected Depths to LOG

SH; med gy, grn, platy, occ pyr

LANSING 'B' 4222(-1959)

LM; tan to cream, foss, most well cem, scat off wh cht, lt yel fluor, no stn, tite

LM; tan to lt brn, buff, f to med xln, foss ip, gd interxln w/well dev. vug por, much brite yel fluor, SSFO, gas bubbles, spotted to occ even lt brn oil stn, gd odor, fair to gd cut, some barren porosity

14 Unit Incr. Shale

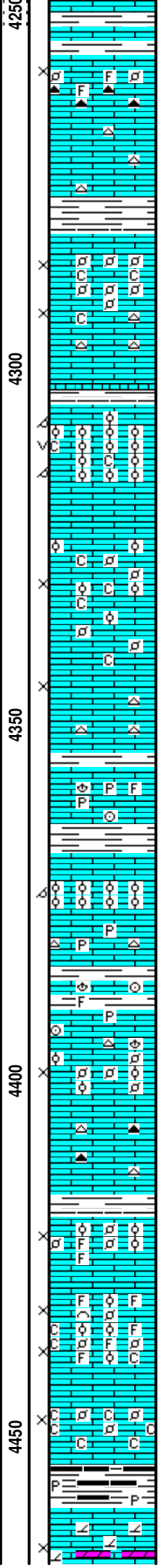
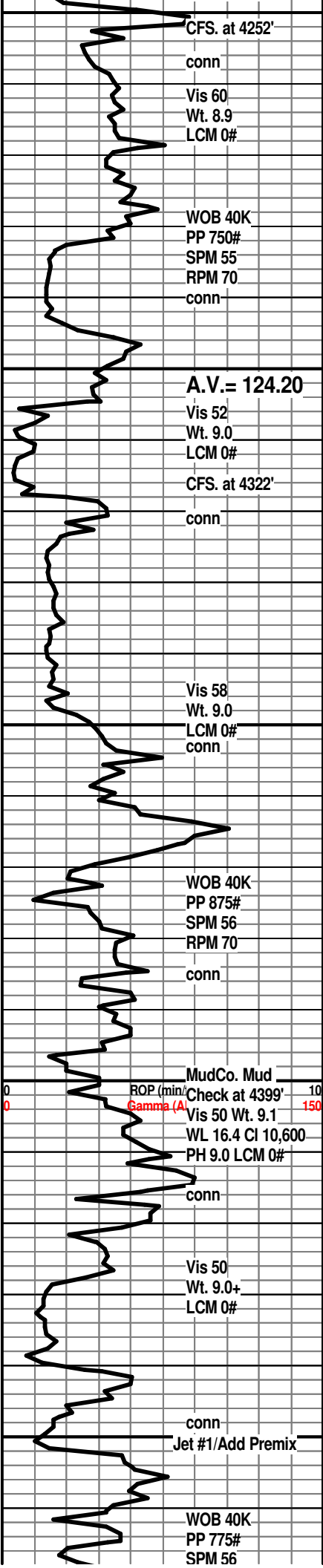
Recycle Shale

TG
C1
C2

0.5 5 50 500
TG, C1-C5
30 Unit Incr. SHOW

BU. Gas/Mud is Hvy Gas Cut after DST #1

C3
65 Unit Incr. SHOW



DST #2: Lansing 'B' 4230' - 4252'
Corrected Depths to LOG
 LM; lt brn, tan, v. foss ip, poor vis interpart por, abnt wh to amber cht, dull yel min fluor only, no stn or odor, ns.

LM; tan to buff, lt brn, most dense, blocky, hd, scat tan cht, ns.

SH; med gy, gy grn, firm

LANSING 'E/F' ZONE 4281(-2018)
 LM; wh, off wh, finely pelletal, interbdd med xln partly chalky lmst, fair to gd interxln/interpart por, lt yel fluor, no stn or odor, no gas kick, barren, ns.

LANSING 'G' PORO. 4305(-2042)
 LM; lt to med brn, oolitic, med size molds w/v. gd oomoldic por, occ vug por, brittle, dull yel to lt yel fluor, no stn or odor, minor chalky mtx, barren, no gas kick

LM; lt gy, lt brn, dense, micritic, tite

LM; wh, off wh, buff, foss, scat small ooids and pellets, occ chalky mtx, fair interpart por, scat lt yel min fluor, no vis stn, no odor, no gas kick

LM; tan to cream, buff, f to med xln, fair interxln por, scat off wh to gy cht, dull yel fluor, ns.

LM; tan to med brn, foss ip, scat pyr, hd

LANSING/KC. 'H' 4368(-2105)
 LM; lt brn to buff, tan, oolitic, small to med size molds, poor to fair oomoldic por, lt to occ med yel fluor, no stn or odor, no vis gas bubbles, ns.

LM; tan to buff, hd, micritic, scat gy/off wh cht, tite, scat pyr

SH; med gy, platy, foss ip, soft

LM; off wh, tan, cream, foss - finely pelletal w/scat small ooids, fair interpart por, dull yel min fluor, no stn or odor, no sample shows

LM; lt to med brn, hd, blocky, scat tan/amber cht, tite

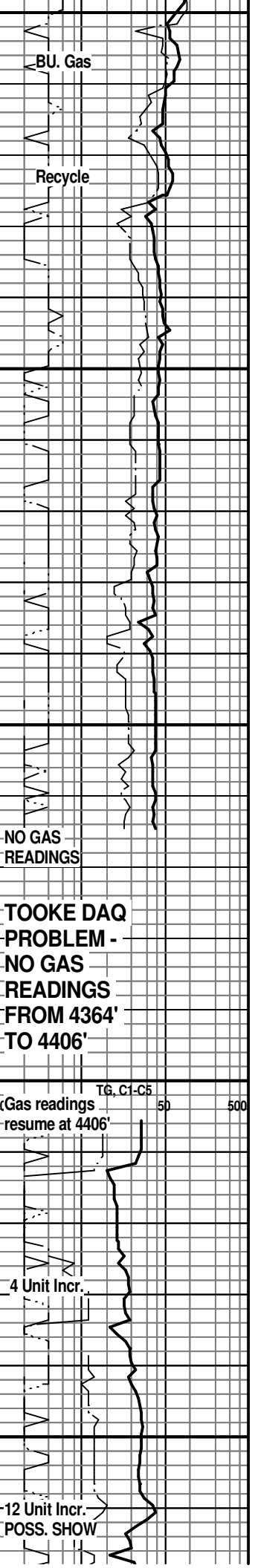
K.C. 'I' ZONE 4419(-2156)
 LM; off wh, tan, cream, foss - finely pelletal/oolitic, most well cem, poor interpart por, lt yel min fluor, no vis stn, no odor, no sample shows

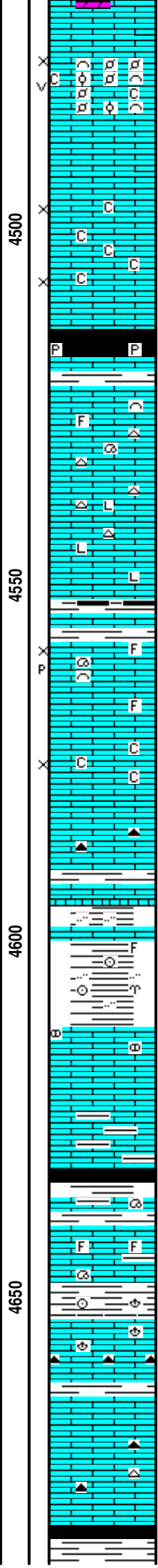
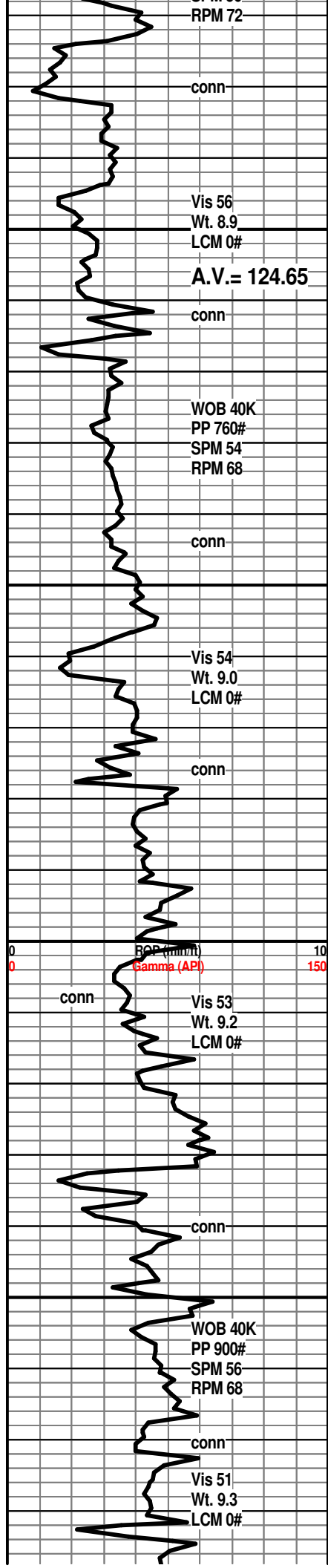
LM; tan to buff, lt brn, foss - finely pelletal w/scat ooids, fair to occ gd interpart por, interbdd soft chalk and chalky lmst, no stn or odor, dull yel fluor, no sample shows

LM; off wh, tan, foss w/much soft chalk and chalky lmst, fair interpart por, med yel min fluor, no vis stn, no odor, ns.

SH; dk gy, blk, carb ip, platy, scat pyr

K.C. 'J' DENNIS 4460(-2197)
 LM; tan to buff, lt brn, fxln, scat sucrosic text, partly dolomitic, fair interxln por, dull yel min fluor, no vis stn,





no odor, no sample shows

LM; tan to lt brn, foss - finely pelletal, scat foss hash, fair interpart and small vug por, lt yel min fluor, minor chalky mtx, interbdd soft chalky lmst, no stn or odor, no gas kick, ns.

LM; off wh, tan, buff, fxln to micritic, some blocky, hd, tite

LM; off wh, f to med xln, scat cse spar calc xtals, much soft chalky mtx, fair to poor interxln por, no fluor, no stn or odor, ns.

STARK SHALE 4514(-2251)
SH; blk, carb ip, pyr

SWOPE 4522(-2259)
LM; tan to lt brn, foss ip, well cem, most blocky, dense, dull yel to no fluor, scat lt gy/off wh cht, no stn or odor, ns.

LM; tan to buff, cream, dense, micritic to litho, tite, scat off wh cht

SH; blk, gy grn, dk gy, platy

HERTHA 4558(-2295)
LM; tan to lt brn, buff, fxln, scat foss mat, fair interxln/interpart w/some p-p por, lt yel fluor, no vis stn, no odor, no gas kick

LM; tan to lt brn, fxln, scat spar calc xtals, fair interxln por ip, minor soft chalky mtx, lt yel fluor, ns.

LM; med to dk brn, hd, micritic, trc dk gy cht

BASE KANSAS CITY 4595(-2332)
SH; varic, rust red, grn, brn, flakey, silty ip.

SH; varic, rust red, grn, foss ip, occ silty

PLEASANTON 4612(-2349)
LM; lt brn, nodular ip, partly weathered, hd

LM; off wh, tan, wh, most micritic, hd, rarely foss, lt yel min fluor, no stn, bcm argil at base

SH; dk gy, trc blk, some varic.

MARMATON 4635(-2372)
LM; tan to lt brn, foss ip, well cem, hd, blocky, rare grn argil lmst, no fluor, no vis por, ns.

SH; grn, gy grn, platy, foss ip.

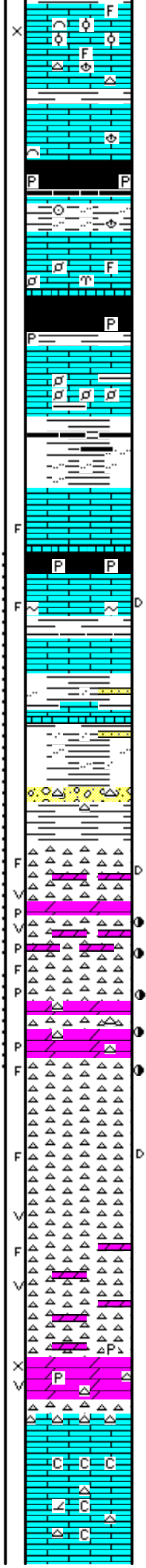
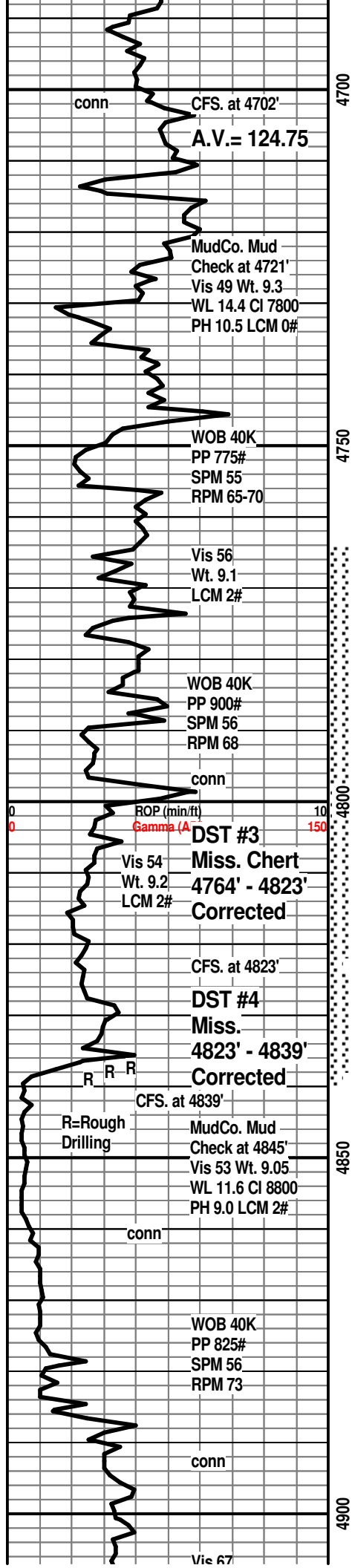
LM; off wh, tan, buff, foss ip, most well cem, occ cherty w/amber/org and brn cht, no fluor, no stn or odor, ns.

LM; lt to med brn, most dense, blocky, hd, scat off wh/amber cht, no vis por, dull to lt yel min fluor, ns.

SH; dk gy, blk, platy, soft

PAWNEE 4688(-2425)





LM; tan to buff, off wh, foss ip, poor to fair interpart por, lt yel fluor, trc finely oolitic lmst, no vis stn, no odor, no gas kick - POOR SAMPLES, some med brn dense micrite

LM; lt to med brn, hd, micritic, scat well cem foss frags, no fluor, ns.

SH; blk, carb, gassy ip, scat pyr, blocky

SH; grn, gy grn, red, foss ip, flakey

LM; tan to lt brn, buff, foss ip, well cem, scat spar calc xtals, med/brite yel min fluor, no vis por, no stn, no gas kick, tite

CHEROKEE SHALE 4729(-2466)

SH; blk, v. dk gy, carb, soft to brittle, scat pyr

LM; tan to med brn, gy brn, hd, foss - scat small pellets, well cem, no vis por, some argil lmst, no fluor, no stn, ns.

SH; varic, dk gy, trc blk, grn, gy, silty ip, fiss - flakey

LM; lt to med brn, blocky, micritic, hd, poss frags, dull yel min fluor, no vis stn, ns.

SH; blk, dk gy, pyr ip

LM; tan to med brn, cse xin, cse spar calc xtals, poss frags, glau ip, faint gas odor, trc gas bubbles, lt yel fluor, trc blk tar/gils

LM; lt gy, pale grn tint, blocky, micritic, no vis por, no fluor, ns.

SH; varic, grn, rust red, yel, brn, platy, occ silty to sandy, trc red sandy sh

SH; varic, some nodular weath lmst, scat wh/transl cht

MISS. UNCONFORMITY 4806(-2543)

CHT; wh, off wh, most fresh, interbdd cherty dolo, sucrosic, frags in cht w/trc edge stn, v. faint odor, dead oil only, v. dull yel fluor

CFS(60 Min): CHT, wh, pale grn, opaque, fresh and some trip, fair p-p and vug por w/fracs, interbdd sucrosic dolo w/scat lt brn live stn, gd odor, Trc. FO, spotted stn, trc gas bubbles

DST #3: Miss. Chert 4764' - 4823'

CHT; wh, off wh, pale grn, fresh and trip, spotted lt brn stn, Trc. FO, strong odor, frags w/fair p-p por, brite yel fluor, interbdd tan cherty sucrosic dolo, scat stn, some dense, occ lrg qtz xtals

DST #4: Miss. Cht/Dol. 4823' - 4839'

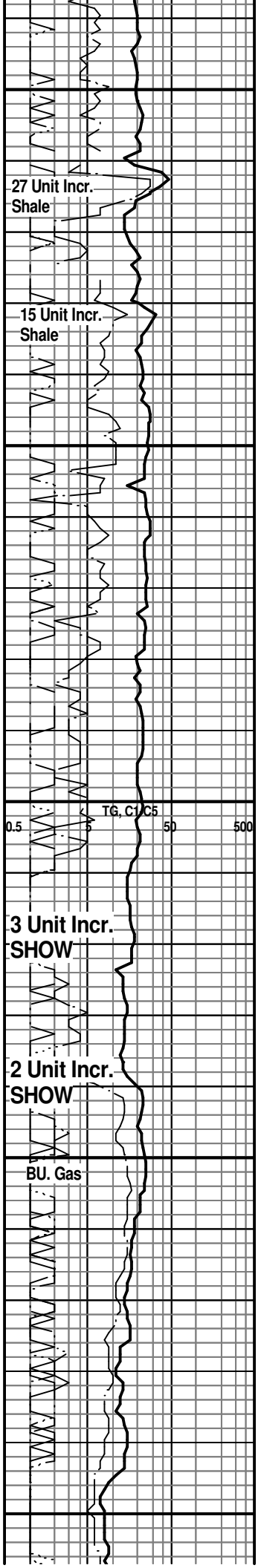
CHT; wh, opaque, porc, pred fresh, scat frags w/rare blk tar/gils on edges, no fluor, no stn or odor, ns.

CHT; wh, off wh, rare lt gy, porc, hd, all fresh, scat vug por w/fracs, partly dolomitic, dull yel min fluor, no stn or odor, ns.

DOL; tan, buff, lt gy, sucrosic, fair to gd interxln w/vug por, med yel min fluor, no stn or odor, cherty ip, rarely pyr, ns.

BASAL MISS. LMST 4887(-2624)

LM; tan to cream, rare lt brn, hd, blocky, no vis por, interbdd chalky lmst, cherty ip, no fluor, no stn or odor, ns.



Vis 07
Wt. 9.2
LCM 2#



CFS. at RTD.

MudCo. Mud
Check at RTD.
Vis 50 Wt. 9.15
WL 11.6 Cl 8800
PH 10.5 LCM 2#



DOL; lt gy, tan, sucrosic, soft, gd interxln w/occ vug
por, med yel min fluor, cherty ip, no stn or odor, ns.

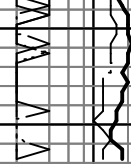
LM; off wh, buff, tan, fxln, partly dolomitic, lt yel fluor,
hd, blocky, no stn, ns.

RTD. 4930' at 6:15 AM. 7/23/12

LTD. 4922'

Halliburton DIL, NEU/DEN w/PE,
Microlog, Sonic, MIRL

NOTE: This log was shifted upward by
6' for correlation purposes with the
Halliburton LOGS.



4950

00

NATURAL GAS ANALYSIS REPORT
GPA 2145-09

Sampled by:
Trilobite Testing, Inc.
Hays, Kansas
Scott City, Kansas
Phone: 800-728-5369
Fax: 785-625-5620

Analyzed by:
Caraway Analytical, Inc
P. O. Box 2137
Liberal, Kansas 67905
Phone: 620-482-2371
Fax: 620-626-7108

Lab Number: 20122402
Sample From: ROSE 1-6
Producer: STRATA EXPL INC
Date:
Time:
Sampler: GARY
Source: DST 1

Analyzed: 07/28/12
Pressure:
Temperature:
Location: 6-27-19
County: KIOWA
State: KANSAS
Formation: LANS A

	Mole %	GPM
Helium	He: 0.454	0.000
Hydrogen	H2: 0.000	0.000
Oxygen	O2: 0.000	0.000
Nitrogen	N2: 25.759	0.000
Carbon Dioxide	CO2: 0.103	0.000
Methane	C1: 67.154	0.000
Ethane	C2: 3.033	1.137
Propane	C3: 1.735	0.650
Iso Butane	iC4: 0.364	0.112
Normal Butane	nC4: 0.628	0.200
Iso Pentane	iC5: 0.214	0.059
Normal Pentane	nC5: 0.191	0.053
Hexanes Plus	C6+: 0.365	0.084

TOTAL: 100.000 2.294
Z Fact: 0.9999
SP.GR.: 0.7233
BTU (SAT): 844.9 @ 14.73 psia
BTU (DRY): 859.8 @ 14.73 psia
OCTANE RATING: 93.4

COMMENTS:

0.000



TRILOBITE TESTING, INC.

DRILL STEM TEST REPORT

Strata Expl.Inc.

6-27s-19w Kiowa Ks.

P.O.Box 401
Fairfield Il. 62837

Rose#1-6

Job Ticket: 47583

DST#: 2

ATTN: Jon Christensen

Test Start: 2012.07.19 @ 14:09:05

GENERAL INFORMATION:

Formation: **Lans. B**

Deviated: No Whipstock: ft (KB)

Time Tool Opened: 16:39:50

Time Test Ended: 22:03:05

Test Type: Conventional Bottom Hole (Reset)

Tester: Gary Pevoteaux

Unit No: 56

Interval: 4236.00 ft (KB) To 4258.00 ft (KB) (TVD)

Reference Elevations: 2263.00 ft (KB)

Total Depth: 4258.00 ft (KB) (TVD)

2252.00 ft (CF)

Hole Diameter: 7.88 inches Hole Condition: Fair

KB to GR/CF: 11.00 ft

Serial #: 8370 Inside

Press @ Run Depth: psig @ 4237.00 ft (KB)

Capacity: 8000.00 psig

Start Date: 2012.07.19

End Date:

2012.07.19

Last Calib.:

2012.07.19

Start Time:

14:04:55

End Time:

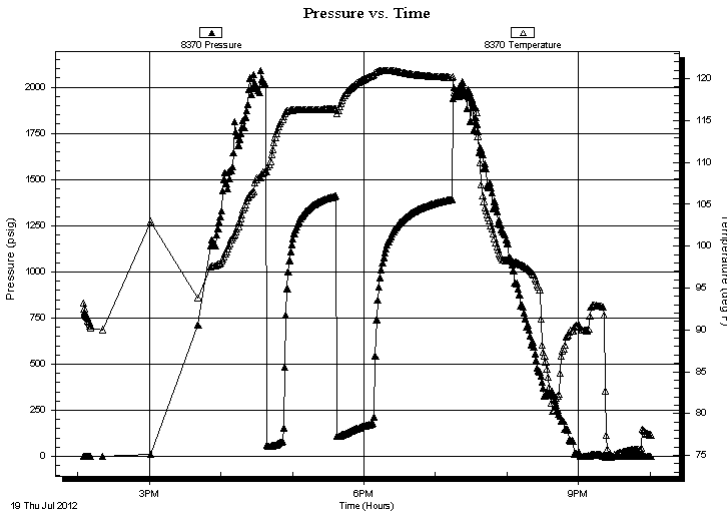
22:00:49

Time On Btm:

Time Off Btm:

TEST COMMENT: IF: Strong blow . B.O.B. in 25 secs.
IS: Weak blow . 1/2 - 2".
FF: Strong blow . B.O.B. in 4 mins.
FS: Fair blow . 2 - 10".

PRESSURE SUMMARY



Time (Min.)	Pressure (psig)	Temp (deg F)	Annotation
-------------	-----------------	--------------	------------

Recovery

Length (ft)	Description	Volume (bbl)
235.00	SOCMW 1%o 6%m 93%w	1.32
0.00	Rw .075 ohms @84 deg	0.00
155.00	GM&WCO 12%g 24%m 19%w 45%o	2.17
0.00	1100 ft.of GIP	0.00

Gas Rates

	Choke (inches)	Pressure (psig)	Gas Rate (Mcf/d)
--	----------------	-----------------	------------------

* Recovery from multiple tests



**TRILOBITE
TESTING, INC.**

DRILL STEM TEST REPORT

FLUID SUMMARY

Strata Expl.Inc.

6-27s-19w Kiowa Ks.

P.O.Box 401
Fairfield Il. 62837

Rose#1-6

Job Ticket: 47583

DST#: 2

ATTN: Jon Christensen

Test Start: 2012.07.19 @ 14:09:05

Mud and Cushion Information

Mud Type: Gel Chem

Cushion Type:

Oil API:

deg API

Mud Weight: 9.00 lb/gal

Cushion Length:

ft

Water Salinity:

86000 ppm

Viscosity: 69.00 sec/qt

Cushion Volume:

bbf

Water Loss: 8.79 in³

Gas Cushion Type:

Resistivity: 0.00 ohm.m

Gas Cushion Pressure:

psig

Salinity: 4300.00 ppm

Filter Cake: 0.20 inches

Recovery Information

Recovery Table

Length ft	Description	Volume bbf
235.00	SOCMW 1%o 6%m 93%w	1.320
0.00	Rw .075 ohms @84 deg	0.000
155.00	GM&WCO 12%g 24%m 19%w 45%o	2.174
0.00	1100 ft.of GIP	0.000

Total Length: 390.00 ft

Total Volume: 3.494 bbl

Num Fluid Samples: 0

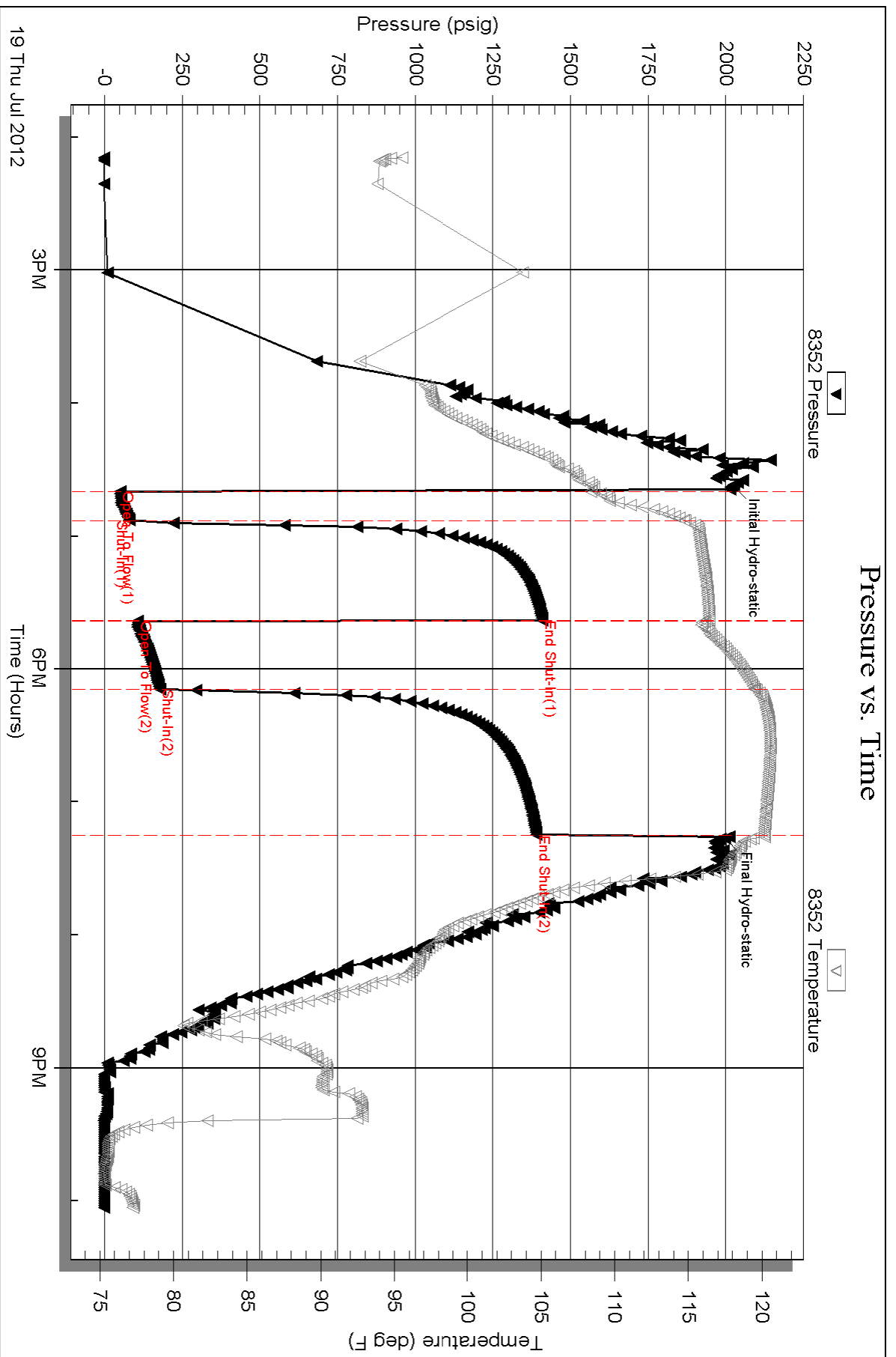
Num Gas Bombs: 0

Serial #: none

Laboratory Name:

Laboratory Location:

Recovery Comments:



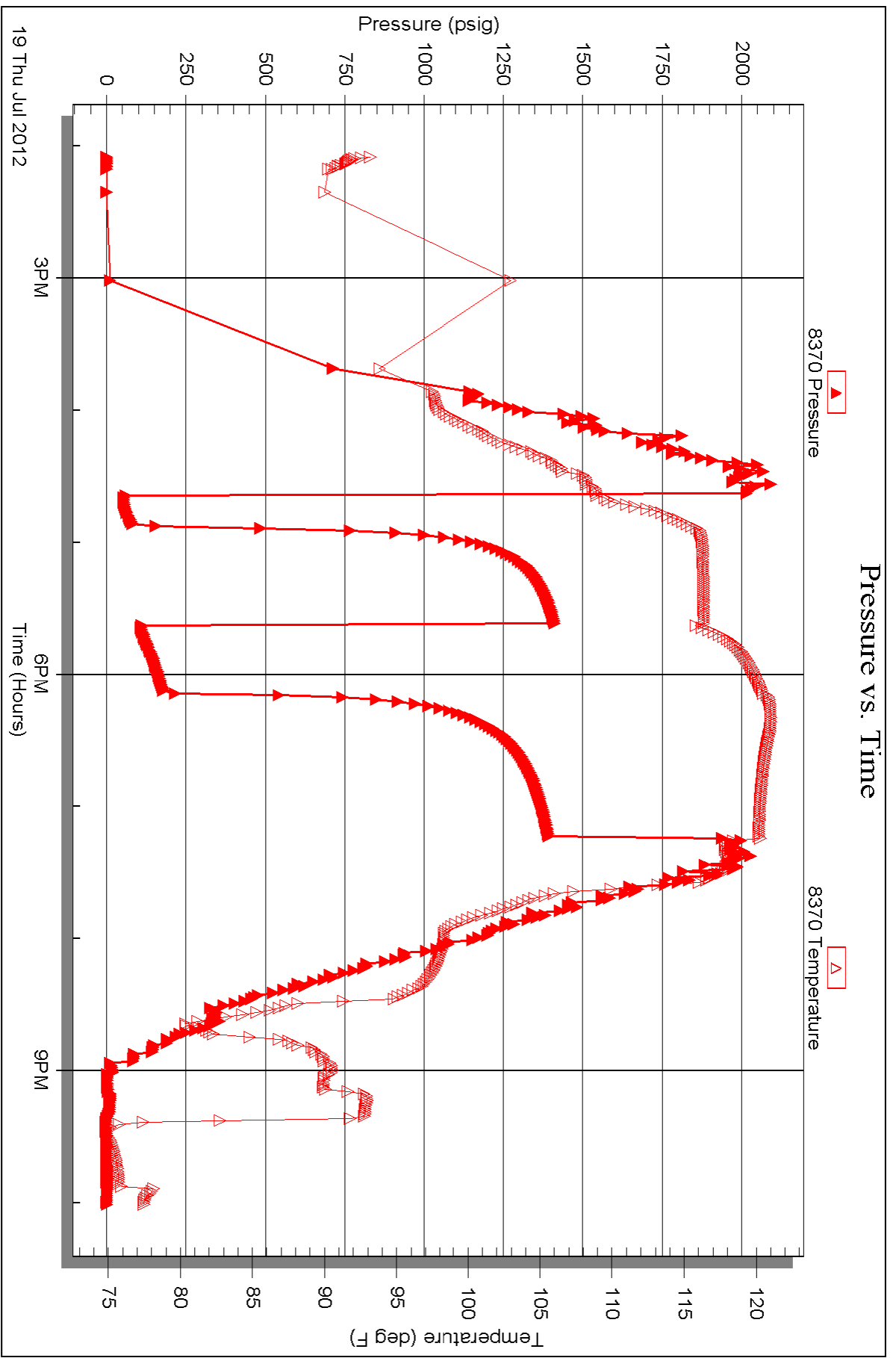
Serial #: 8370

Inside

Strata Expl. Inc.

Rose#1-6

DST Test Number: 2





TRILOBITE TESTING, INC.

DRILL STEM TEST REPORT

Strata Expl.Inc.

6-27s-19w Kiowa Ks.

P.O.Box 401
Fairfield Il. 62837

Rose#1-6

Job Ticket: 47584

DST#: 3

ATTN: Jon Christensen

Test Start: 2012.07.21 @ 22:05:45

GENERAL INFORMATION:

Formation: **Miss.**

Deviated: No Whipstock: ft (KB)

Time Tool Opened: 00:56:00

Time Test Ended: 05:28:45

Test Type: Conventional Bottom Hole (Reset)

Tester: Gary Pevoteaux

Unit No: 56

Interval: 4770.00 ft (KB) To 4829.00 ft (KB) (TVD)

Reference Elevations: 2263.00 ft (KB)

Total Depth: 4829.00 ft (KB) (TVD)

2252.00 ft (CF)

Hole Diameter: 7.88 inches Hole Condition: Fair

KB to GR/CF: 11.00 ft

Serial #: 8352 Outside

Press @ Run Depth: 25.45 psig @ 4771.00 ft (KB)

Capacity: 8000.00 psig

Start Date: 2012.07.21

End Date:

2012.07.22

Last Calib.:

2012.07.22

Start Time: 22:05:50

End Time:

05:28:44

Time On Btm:

2012.07.22 @ 00:54:15

Time Off Btm:

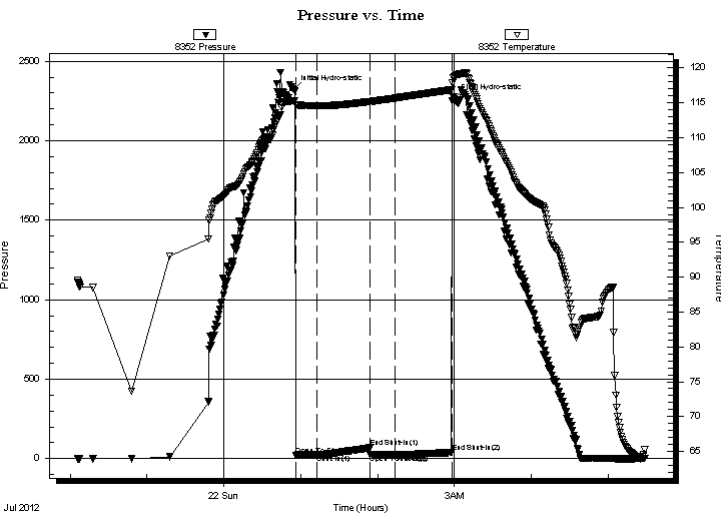
2012.07.22 @ 02:59:45

TEST COMMENT: IF:Weak blow . 1/2" decreasing.

IS:No blow .

FF:No blow .

FS:No blow .



PRESSURE SUMMARY

Time (Min.)	Pressure (psig)	Temp (deg F)	Annotation
0	2322.06	115.32	Initial Hydro-static
2	22.48	114.75	Open To Flow (1)
19	23.68	114.60	Shut-In(1)
60	67.89	115.21	End Shut-In(1)
60	25.08	115.19	Open To Flow (2)
80	25.45	115.70	Shut-In(2)
124	38.69	116.90	End Shut-In(2)
126	2263.60	118.80	Final Hydro-static

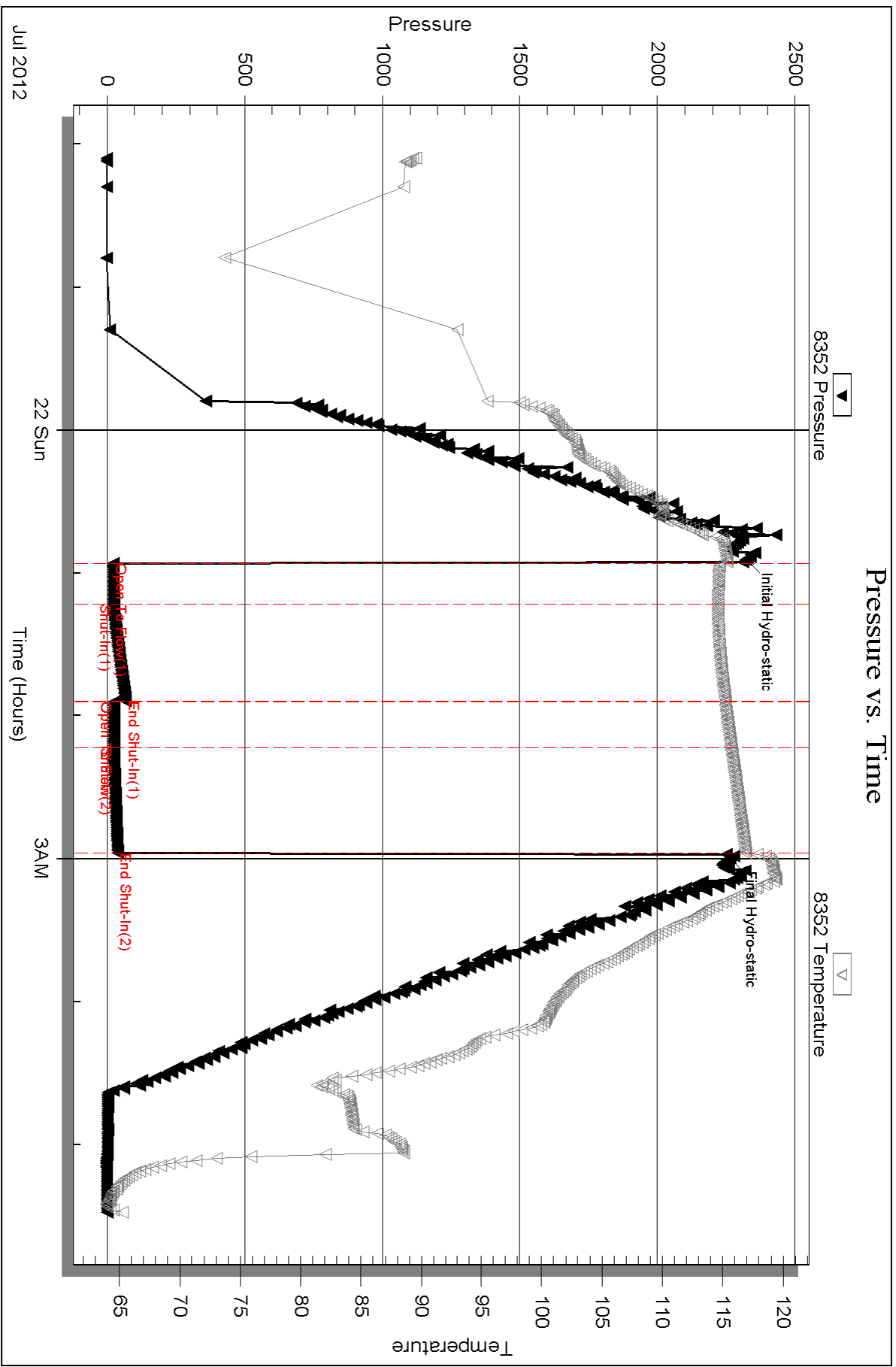
Recovery

Length (ft)	Description	Volume (bbl)
5.00	Drig.mud	0.02

* Recovery from multiple tests

Gas Rates

Choke (inches)	Pressure (psig)	Gas Rate (Mcf/d)



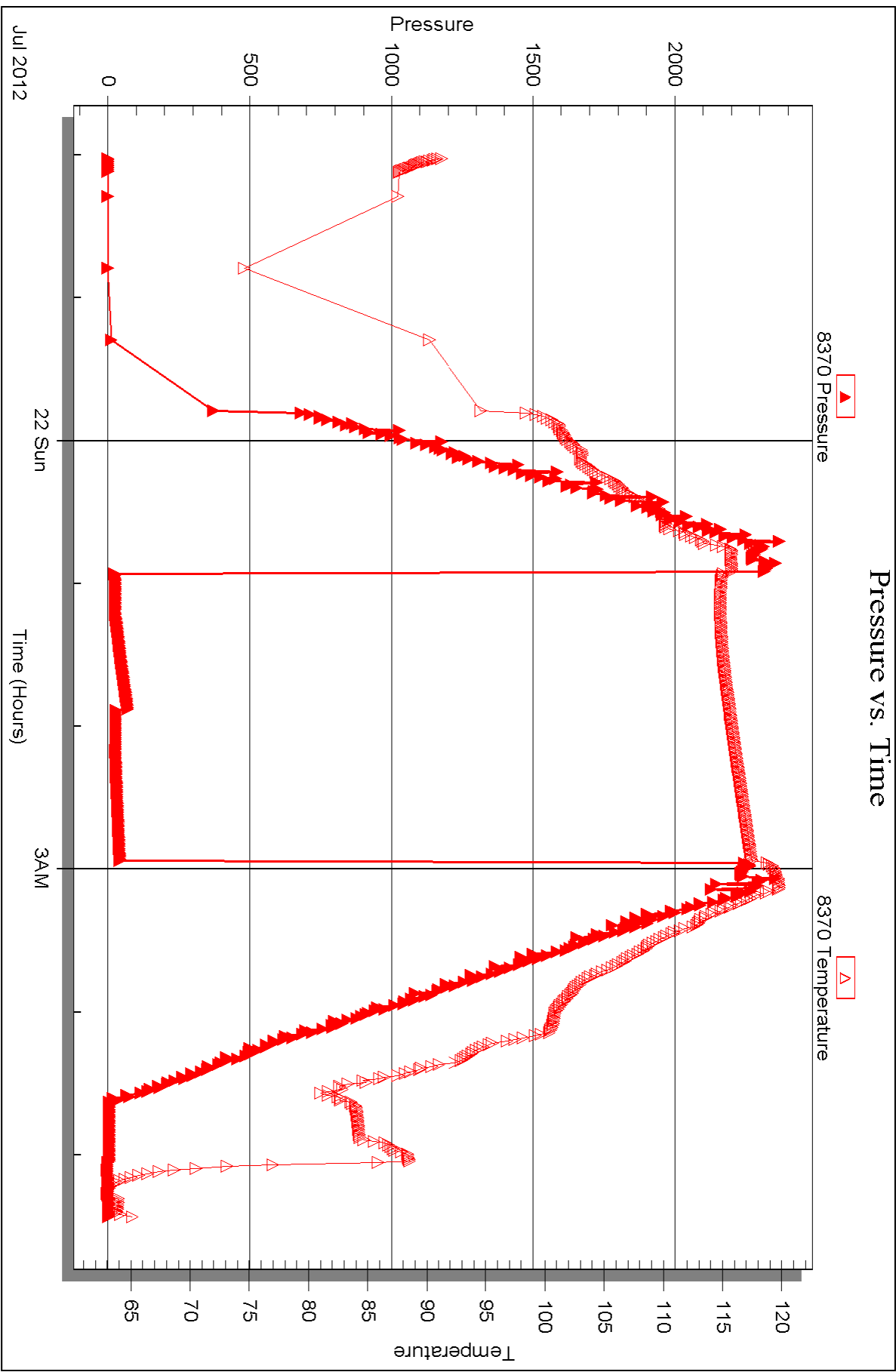
Serial #: 8370

Inside

Strata Expl. Inc.

Rose#1-6

DST Test Number: 3





**TRILOBITE
TESTING, INC.**

DRILL STEM TEST REPORT

Strata Expl.Inc.

6-27s-19w Kiowa Ks.

P.O.Box 401
Fairfield Il. 62837

Rose#1-6

Job Ticket: 47585

DST#: 4

ATTN: Jon Christensen

Test Start: 2012.07.22 @ 15:12:43

GENERAL INFORMATION:

Formation: **Miss.**

Deviated: No Whipstock: ft (KB)

Time Tool Opened: 17:33:28

Time Test Ended: 00:00:58

Test Type: Conventional Bottom Hole (Reset)

Tester: Gary Pevoteaux

Unit No: 56

Interval: 4829.00 ft (KB) To 4845.00 ft (KB) (TVD)

Reference Elevations: 2263.00 ft (KB)

Total Depth: 4845.00 ft (KB) (TVD)

2252.00 ft (CF)

Hole Diameter: 7.88 inches Hole Condition: Fair

KB to GR/CF: 11.00 ft

Serial #: 8352 Outside

Press @ RunDepth: 78.26 psig @ 4830.00 ft (KB)

Capacity: 8000.00 psig

Start Date: 2012.07.22

End Date:

2012.07.23

Last Calib.:

2012.07.23

Start Time: 15:12:48

End Time:

00:00:58

Time On Btm:

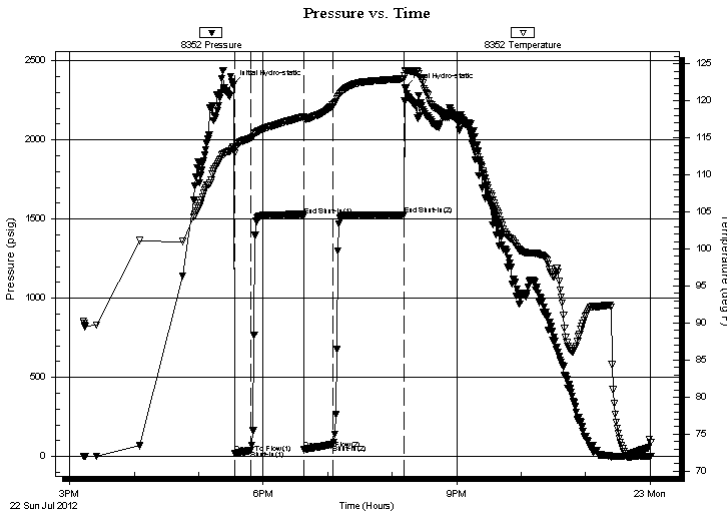
2012.07.22 @ 17:31:58

Time Off Btm:

2012.07.22 @ 20:12:13

TEST COMMENT: IF:Weak blow . Slow increase to 1 1/2".
IS:No blow .
FF:Weak blow . Slow increase to 1 1/2".
FS:No blow .

PRESSURE SUMMARY



Time (Min.)	Pressure (psig)	Temp (deg F)	Annotation
0	2348.47	113.80	Initial Hydro-static
2	18.72	112.91	Open To Flow (1)
17	40.29	114.98	Shut-In(1)
66	1519.71	117.84	End Shut-In(1)
66	45.97	117.50	Open To Flow (2)
93	78.26	119.46	Shut-In(2)
159	1527.61	123.00	End Shut-In(2)
161	2331.21	124.04	Final Hydro-static

Recovery

Length (ft)	Description	Volume (bbl)
65.00	SOCMW 4%o 48%w 48%w	0.32
0.00	RW .08ohms @83deg	0.00
60.00	OCVM 24%o 16%w 60%w	0.30
5.00	Clean oil	0.02

Gas Rates

	Choke (inches)	Pressure (psig)	Gas Rate (Mcf/d)

* Recovery from multiple tests



**TRILOBITE
TESTING, INC.**

DRILL STEM TEST REPORT

FLUID SUMMARY

Strata Expl.Inc.

6-27s-19w Kiowa Ks.

P.O.Box 401
Fairfield Il. 62837

Rose#1-6

Job Ticket: 47585

DST#: 4

ATTN: Jon Christensen

Test Start: 2012.07.22 @ 15:12:43

Mud and Cushion Information

Mud Type: Gel Chem

Cushion Type:

Oil API:

deg API

Mud Weight: 9.00 lb/gal

Cushion Length:

ft

Water Salinity:

83000 ppm

Viscosity: 53.00 sec/qt

Cushion Volume:

bbbl

Water Loss: 11.59 in³

Gas Cushion Type:

Resistivity: 0.00 ohm.m

Gas Cushion Pressure:

psig

Salinity: 7800.00 ppm

Filter Cake: 0.20 inches

Recovery Information

Recovery Table

Length ft	Description	Volume bbbl
65.00	SOCMW 4%o 48%m 48%w	0.320
0.00	RW .08ohms @83deg	0.000
60.00	OCWM 24%o 16%w 60%m	0.295
5.00	Clean oil	0.025

Total Length: 130.00 ft

Total Volume: 0.640 bbl

Num Fluid Samples: 0

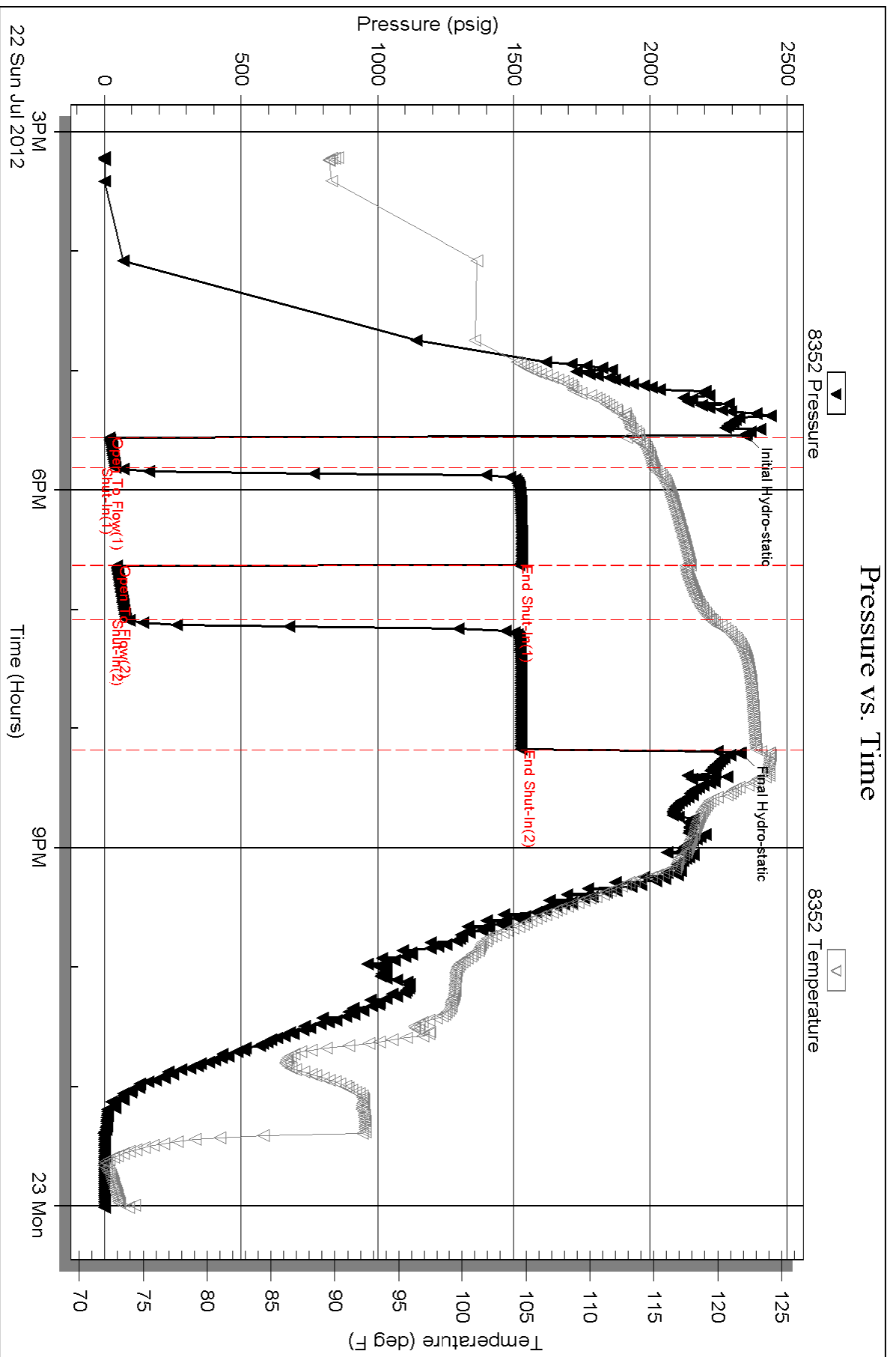
Num Gas Bombs: 0

Serial #: none

Laboratory Name:

Laboratory Location:

Recovery Comments:



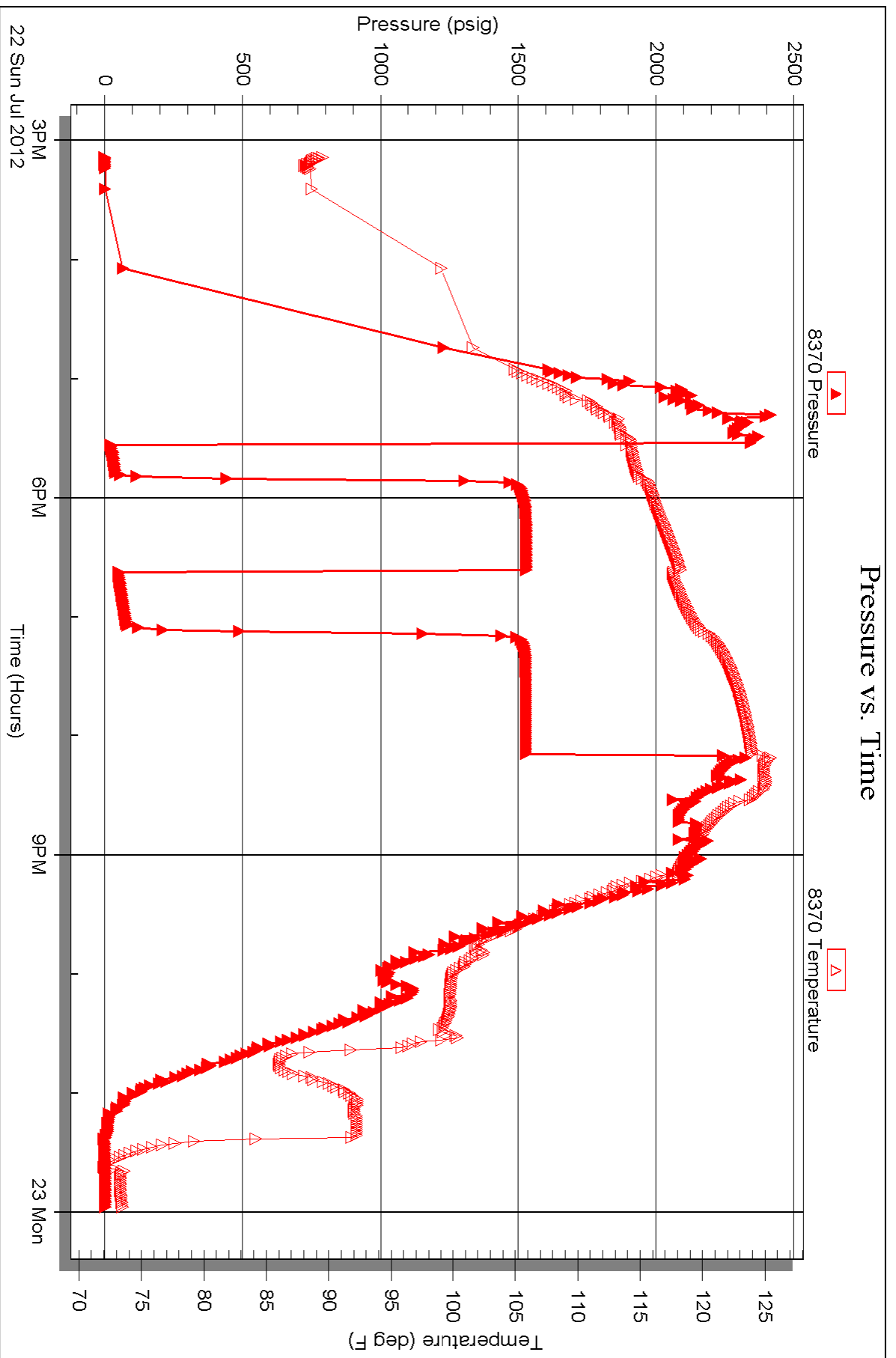
Serial #: 8370

Inside

Strata Expl. Inc.

Rose#1-6

DST Test Number: 4





PAGE 1 of 1	CUST NO 1004072	INVOICE DATE 08/24/2012
INVOICE NUMBER 1718 - 90986501		

PAID
8-30-12
FNB SA#8862

Pratt (620) 672-1201
 B STRATA EXPLORATION
 I PO Box: 401
 L FAIRFIELD
 L IL US 62837
 T
 O ATTN: ACCOUNTS PAYABLE

J LEASE NAME Rose 1-6
 O LOCATION
 B COUNTY Kiowa
 S STATE KS
 I JOB DESCRIPTION Cement-New Well Casing/Pi
 T
 E JOB CONTACT

JOB #	EQUIPMENT #	PURCHASE ORDER NO.	TERMS	DUE DATE
40503652	27463		Net - 30 days	09/23/2012

For Service Dates: 08/23/2012 to 08/23/2012 0040503652 171806422A Cement-New Well Casing/Pi 08/23/2012 Cement Squeeze Common Cement "Unit Mileage Chg (PU, cars one way)" Heavy Equipment Mileage "Proppant & Bulk Del. Chgs., per ton mil Depth Charge; 4001'-5000' Blending & Mixing Service Charge Cement Squeeze Manifold "Service Supervisor, first 8 hrs on loc.	QTY	U of M	UNIT PRICE	INVOICE AMOUNT	
				LEV	P/P
				5	8/27
					A/P
					8/27
					D/D
				73990/	
					5429.30
	150.00	EA	12.00		1,800.10 T
	45.00	MI	3.19		143.45
	90.00	MI	5.25		472.53
	317.00	EA	1.20		380.42
	1.00	EA	1,890.10		1,890.10
	150.00	BAG	1.05		157.51
	1.00	EA	322.52		322.52
	1.00	EA	131.26		131.26

PLEASE REMIT TO:	SEND OTHER CORRESPONDENCE TO:	SUB TOTAL	5,297.89
BASIC ENERGY SERVICES, LP	BASIC ENERGY SERVICES, LP	TAX	131.41
PO BOX 841903	PO BOX 10460	INVOICE TOTAL	5,429.30
DALLAS, TX 75284-1903	MIDLAND, TX 79702		

Customer <i>STRATA EXPLORATION</i>	Lease No.	Date <i>8-23-12</i>	
Lease <i>Rose</i>	Well # <i>1-6</i>		
Field Order # <i>422</i>	Station <i>Pratt</i>	Casing	Depth
Type Job <i>LNW SQ</i>	Formation	County <i>Kiowa</i>	State <i>KS</i>
		Legal Description <i>6-27-19</i>	

PIPE DATA		PERFORATING DATA		FLUID USED		TREATMENT RESUME		
Casing Size	Tubing Size	Shots/Ft		Acid	RATE	PRESS	ISIP	
<i>5 1/2</i>	<i>2 3/8</i>			<i>150% common</i>				
Depth <i>195</i>	Depth <i>1006</i>	From <i>4201</i>	To <i>4209</i>	Pre Pad <i>1.18 yeild</i>	Max			5 Min.
Volume <i>4.6</i>	Volume <i>15.6</i>	From <i>4232</i>	To <i>4242</i>	Pad	Min			10 Min.
Max Press <i>500</i>	Max Press <i>1350</i>	From	To	Frac	Avg			15 Min.
Well Connection	Annulus Vol.	From	To		HHP Used			Annulus Pressure
Plug Depth	Packer Depth <i>4006</i>	From	To	Flush <i>17 BBL</i>	Gas Volume			Total Load

Customer Representative <i>Mike Polley</i>	Station Manager <i>O. Scott</i>	Treater <i>Joe Melsay</i>
Service Units <i>27463 19960 21010 27280</i>		
Driver Names <i>McGraw Pierson Orlando</i>		

Time	Casing Pressure	Tubing Pressure	Bbls. Pumped	Rate	Service Log
					On location - Safety Meeting
<i>9:20</i>	<i>0</i>		<i>0</i>	<i>4</i>	Hookup TO Annulus Start H2O to load
<i>9:25</i>	<i>500</i>		<i>22</i>	<i>1/2</i>	Loaded pressure 500# Close In - Held
<i>9:30</i>			<i>0</i>	<i>4</i>	Switch TO Tubing Start H2O to load
<i>9:32</i>			<i>5 1/2</i>	<i>1/2</i>	Loaded bet Injection rate
<i>9:33</i>		<i>150</i>	<i>7</i>	<i>2</i>	pumping into
		<i>300</i>	<i>0</i>	<i>2</i>	mit cement @ 15.6# / gal
<i>9:48</i>		<i>300</i>	<i>31</i>	<i>2</i>	Cement Complete 150% S
					Shut Down Clear pump + Lines
<i>10:00</i>			<i>0</i>		Start H2O Displacement
<i>10:05</i>			<i>4</i>	<i>0</i>	Gravity Feed 4 bbl
<i>10:06</i>		<i>300</i>		<i>3/4</i>	Pump into 3/4 bpm @
<i>10:20</i>		<i>1350</i>	<i>15.5</i>	<i>3/4</i>	Cement clear of packer
<i>10:30</i>		<i>1350</i>	<i>17</i>	<i>1/4</i>	Shut Down - wash pump truck
<i>10:50</i>					wait 20 minutes
<i>11:00</i>		<i>1500</i>			Repressure Tubing 1500# Release Back
					NU Returns Release packer
<i>11:15</i>	<i>500</i>		<i>0</i>	<i>2 1/2</i>	Reverse out
<i>11:30</i>	<i>500</i>		<i>30</i>	<i>2 1/2</i>	Pumped 2 bbl cement top it
<i>11:32</i>	<i>500</i>		<i>1</i>	<i>1</i>	Pressure Annulus 500# Close In
<i>11:35</i>		<i>900</i>			Pump on Tubing feeding Shut Down wait 15 min
<i>11:50</i>		<i>1350</i>			Repressure wait 15 min



PAGE	CUST NO	INVOICE DATE
1 of 1	1004072	07/26/2012
INVOICE NUMBER		
1718 - 90963194		

PAID
8-17-12
FNB SA 8837

Pratt (620) 672-1201
 B STRATA EXPLORATION
 I PO Box: 401
 L FAIRFIELD
 L IL US 62837
 T
 O ATTN: ACCOUNTS PAYABLE

J LEASE NAME Rose 1-6
 O LOCATION
 B COUNTY Kiowa
 S STATE KS
 I JOB DESCRIPTION Cement-New Well Casing/Pi
 T
 E JOB CONTACT

JOB #	EQUIPMENT #	PURCHASE ORDER NO.	TERMS	DUE DATE
40491752	19843		Net - 30 days	08/25/2012

	QTY	U of M	UNIT PRICE	INVOICE AMOUNT																								
<i>For Service Dates: 07/24/2012 to 07/24/2012</i>																												
0040491752																												
171806298A Cement-New Well Casing/Pi 07/24/2012																												
Cement 5 1/2" Longstring																												
<table border="1"> <tr> <td>LEASE</td> <td></td> <td>LEV</td> <td>P/P</td> </tr> <tr> <td>7/31</td> <td>ROSE 1-6</td> <td>5</td> <td>8/6</td> </tr> <tr> <td>DES</td> <td>CEMENT LONG STRING</td> <td></td> <td>A/P</td> </tr> <tr> <td></td> <td></td> <td></td> <td>8/13</td> </tr> <tr> <td>DRL</td> <td>COM</td> <td>LOE</td> <td>G/L</td> </tr> <tr> <td></td> <td>X</td> <td></td> <td>73551/13362</td> </tr> </table>					LEASE		LEV	P/P	7/31	ROSE 1-6	5	8/6	DES	CEMENT LONG STRING		A/P				8/13	DRL	COM	LOE	G/L		X		73551/13362
LEASE		LEV	P/P																									
7/31	ROSE 1-6	5	8/6																									
DES	CEMENT LONG STRING		A/P																									
			8/13																									
DRL	COM	LOE	G/L																									
	X		73551/13362																									
50/50 POZ	300.00	EA	8.80	2,640.00 T																								
Celloflake	75.00	EA	2.96	222.00 T																								
Gypsum	1,260.00	EA	0.60	756.00 T																								
FLA-322 Low Fluid Loss	126.00	EA	6.00	756.00 T																								
Gilsonite	1,800.00	EA	0.54	964.80 T																								
KCL, Potassium Chloride	680.00	EA	1.20	816.00 T																								
"Latch Down Plug & Baffle, 5 1/2" (Blue)	1.00	EA	320.00	320.00																								
"Auto Fill Float Shoe 5 1/2" (Blue)"	1.00	EA	288.00	288.00																								
"Turbolizer, 5 1/2" (Blue)"	12.00	EA	88.00	1,056.00																								
"5 1/2" Basket (Blue)"	1.00	EA	232.00	232.00																								
"Cement Scratchers Cable Type, 5 1/2" "	6.00	EA	60.00	360.00																								
Claymax KCL Substitute	5.00	EA	28.00	140.00 T																								
Mud Flush	1,000.00	EA	0.69	688.00 T																								
"Unit Mileage Chg (PU, cars one way)"	30.00	MI	3.40	102.00																								
Heavy Equipment Mileage	60.00	MI	5.60	336.00																								
"Proppant & Bulk Del. Chgs., per ton mil	378.00	EA	1.28	483.84																								
Depth Charge; 4001'-5000'	1.00	EA	2,016.00	2,016.00																								
Blending & Mixing Service Charge	300.00	BAG	1.12	336.00																								
Plug Container Util. Chg.	1.00	EA	200.00	200.00																								
"Service Supervisor, first 8 hrs on loc.	1.00	EA	140.00	140.00																								

PLEASE REMIT TO:	SEND OTHER CORRESPONDENCE TO:	SUB TOTAL	12,852.64
BASIC ENERGY SERVICES, LP	BASIC ENERGY SERVICES, LP	TAX	509.74
PO BOX 841903	PO BOX 10460	INVOICE TOTAL	13,362.38
DALLAS, TX 75284-1903	MIDLAND, TX 79702		



10244 NE Hwy. 61
P.O. Box 8613
Pratt, Kansas 67124
Phone 620-672-1201

CC404917
FIELD SERVICE TICKET
1718 06298 A

DATE _____ TICKET NO. _____

DATE OF JOB: 7-24-2012 DISTRICT				NEW WELL <input checked="" type="checkbox"/> OLD WELL <input type="checkbox"/> PROD <input type="checkbox"/> INJ <input type="checkbox"/> WDW <input type="checkbox"/> CUSTOMER ORDER NO.:					
CUSTOMER: STRATA EXPLORATION				LEASE: ROSE		WELL NO.: 1-6			
ADDRESS				COUNTY: KIOWA		STATE: KS.			
CITY STATE				SERVICE CREW: LESLEY, MARQUEZ, JOONG					
AUTHORIZED BY				JOB TYPE: CNW-5 1/2" L.S.					
EQUIPMENT#	HRS	EQUIPMENT#	HRS	EQUIPMENT#	HRS	TRUCK CALLED	DATE	AM	TIME
37586	6					7-24-12		PM	7:00
19889-19843	6					ARRIVED AT JOB		AM	10:00
19160-21010	6					START OPERATION		AM	11:00
						FINISH OPERATION		AM	4:30
						RELEASED		AM	5:00
						MILES FROM STATION TO WELL			30

CONTRACT CONDITIONS: (This contract must be signed before the job is commenced or merchandise is delivered).

The undersigned is authorized to execute this contract as an agent of the customer. As such, the undersigned agrees and acknowledges that this contract for services, materials, products, and/or supplies includes all of and only those terms and conditions appearing on the front and back of this document. No additional or substitute terms and/or conditions shall become a part of this contract without the written consent of an officer of Basic Energy Services LP.

SIGNED: *[Signature]*
(WELL OWNER, OPERATOR, CONTRACTOR OR AGENT)

ITEM/PRICE REF. NO.	MATERIAL, EQUIPMENT AND SERVICES USED	UNIT	QUANTITY	UNIT PRICE	\$ AMOUNT	
CP 104	50/50 POZ	SK	250		2,750.00	
CP 104	50/50 POZ	SK	50		550.00	
CC 102	CELL-FLAKE	lb	75		277.50	
CC 113	GYPSON	lb	1260		945.00	
CC 129	FLA-322 LOW FLUID LOSS	lb	1260		945.00	
CC 201	GILSONITE	lb	1800		1,206.00	
C 700	KCL, POTASSIUM CHLORIDE	lb	680		1,020.00	
CF 607	LATCH DOWN PLUG & BAFFLE, 5 1/2"	EA	1		400.00	
CF 1251	AUTO FILL FLOAT SHALE, 5 1/2"	EA	1		360.00	
CF 1651	TURBO LIZER, 5 1/2"	EA	12		1,320.00	
CF 1901	BASKET, 5 1/2"	EA	1		290.00	
CF 2001	SCRATCHERS, CABLE TYPE, 5 1/2"	EA	6		450.00	
C 704	CLAYMAX, KCL SUB.	GAL	5		175.00	
CC 151	MUD FLUSH	GAL	1000		810.00	
E 100	PICKUP MILEAGE	MI	30		127.50	
E 101	HEAVY EQUIPMENT MILEAGE	MI	60		420.00	
E 113	BULK DELIVERY CHARGE	TM	378		664.80	
CE 205	DEPTH CHARGE; 4001'-5000'	HR	1-4		2,520.00	
CE 240	BLENDED SERVICE CHARGE	SK	300		420.00	
CE 504	PLUG CONTAINER CHARGE	JOB	1	250.00	250.00	
5003	CHEMICAL / ACID DATA: SERVICE SUPERVISOR	EA	1	175.00	175.00	
					SUB TOTAL	12,794.80
SERVICE & EQUIPMENT				%TAX ON \$		
MATERIALS				%TAX ON \$		
TOTAL					12,852.64	

SERVICE REPRESENTATIVE: <i>[Signature]</i>	THE ABOVE MATERIAL AND SERVICE ORDERED BY CUSTOMER AND RECEIVED BY: <i>[Signature]</i>
FIELD SERVICE ORDER NO.	(WELL OWNER OPERATOR CONTRACTOR OR AGENT)

Conservation Division
Finney State Office Building
130 S. Market, Rm. 2078
Wichita, KS 67202-3802



Phone: 316-337-6200
Fax: 316-337-6211
<http://kcc.ks.gov/>

Mark Sievers, Chairman
Thomas E. Wright, Commissioner
Shari Feist Albrecht, Commissioner

Sam Brownback, Governor

November 13, 2012

John
Strata Exploration, Inc.
PO BOX 401
FAIRFIELD, IL 62837-0401

Re: ACO1
API 15-097-21730-00-00
Rose 1-6
SW/4 Sec.06-27S-19W
Kiowa County, Kansas

Dear Production Department:

We are herewith requesting that the Well Completion Form ACO-1 and attached information for the subject well be held confidential for a period of two years.

Should you have any questions or need additional information regarding subject well, please contact our office.

Respectfully,
John

Conservation Division
Finney State Office Building
130 S. Market, Rm. 2078
Wichita, KS 67202-3802



Phone: 316-337-6200
Fax: 316-337-6211
<http://kcc.ks.gov/>

Mark Sievers, Chairman
Thomas E. Wright, Commissioner
Shari Feist Albrecht, Commissioner

Sam Brownback, Governor

November 14, 2012

John
Strata Exploration, Inc.
PO BOX 401
FAIRFIELD, IL 62837-0401

Re: ACO-1
API 15-097-21730-00-00
Rose 1-6
SW/4 Sec.06-27S-19W
Kiowa County, Kansas

Dear John:

K.A.R. 82-3-107 provides for all completion information to be filed within 120 days of the spud date. Subsection(e)(2) of that regulation states "All rights to confidentiality shall be lost if the filings are not timely."

The above referenced well was spudded on 07/12/2012 and the ACO-1 was received on November 13, 2012 (not within the 120 days timely requirement).

Therefore, your request for confidential treatment of data contained within the ACO-1 filing cannot be granted at this time.

If you should have any questions, please do not hesitate to contact me at (316)337-6200.

Sincerely,

Production Department