



# TEMPORARY ABANDONMENT WELL APPLICATION

OPERATOR: License# \_\_\_\_\_  
 Name: \_\_\_\_\_  
 Address 1: \_\_\_\_\_  
 Address 2: \_\_\_\_\_  
 City: \_\_\_\_\_ State: \_\_\_\_\_ Zip: \_\_\_\_\_ + \_\_\_\_\_  
 Contact Person: \_\_\_\_\_  
 Phone: ( \_\_\_\_\_ ) \_\_\_\_\_  
 Contact Person Email: \_\_\_\_\_  
 Field Contact Person: \_\_\_\_\_  
 Field Contact Person Phone: ( \_\_\_\_\_ ) \_\_\_\_\_

API No. 15- \_\_\_\_\_  
 Spot Description: \_\_\_\_\_  
 \_\_\_\_\_ - \_\_\_\_\_ - \_\_\_\_\_ - \_\_\_\_\_ Sec. \_\_\_\_\_ Twp. \_\_\_\_\_ S. R. \_\_\_\_\_  E  W  
 \_\_\_\_\_ feet from  N /  S Line of Section  
 \_\_\_\_\_ feet from  E /  W Line of Section  
 GPS Location: Lat: \_\_\_\_\_, Long: \_\_\_\_\_  
(e.g. xx.xxxxx) (e.g. -xxx.xxxxx)  
 Datum:  NAD27  NAD83  WGS84  
 County: \_\_\_\_\_ Elevation: \_\_\_\_\_  GL  KB  
 Lease Name: \_\_\_\_\_ Well #: \_\_\_\_\_  
 Well Type: (check one)  Oil  Gas  OG  WSW  Other: \_\_\_\_\_  
 SWD Permit #: \_\_\_\_\_  ENHR Permit #: \_\_\_\_\_  
 Gas Storage Permit #: \_\_\_\_\_  
 Spud Date: \_\_\_\_\_ Date Shut-In: \_\_\_\_\_

|                  | Conductor | Surface | Production | Intermediate | Liner | Tubing |
|------------------|-----------|---------|------------|--------------|-------|--------|
| Size             |           |         |            |              |       |        |
| Setting Depth    |           |         |            |              |       |        |
| Amount of Cement |           |         |            |              |       |        |
| Top of Cement    |           |         |            |              |       |        |
| Bottom of Cement |           |         |            |              |       |        |

Casing Fluid Level from Surface: \_\_\_\_\_ How Determined? \_\_\_\_\_ Date: \_\_\_\_\_

Casing Squeeze(s): \_\_\_\_\_ to \_\_\_\_\_ w / \_\_\_\_\_ sacks of cement, \_\_\_\_\_ to \_\_\_\_\_ w / \_\_\_\_\_ sacks of cement. Date: \_\_\_\_\_  
(top) (bottom) (top) (bottom)

Do you have a valid Oil & Gas Lease?  Yes  No

Depth and Type:  Junk in Hole at \_\_\_\_\_  Tools in Hole at \_\_\_\_\_ Casing Leaks:  Yes  No Depth of casing leak(s): \_\_\_\_\_  
(depth) (depth)

Type Completion:  ALT. I  ALT. II Depth of:  DV Tool: \_\_\_\_\_ w / \_\_\_\_\_ sacks of cement  Port Collar: \_\_\_\_\_ w / \_\_\_\_\_ sack of cement  
(depth) (depth)

Packer Type: \_\_\_\_\_ Size: \_\_\_\_\_ Inch Set at: \_\_\_\_\_ Feet

Total Depth: \_\_\_\_\_ Plug Back Depth: \_\_\_\_\_ Plug Back Method: \_\_\_\_\_

**Geological Data:**

| Formation Name | Formation Top | Formation Base | Completion Information   |
|----------------|---------------|----------------|--|
| 1. _____       | At: _____     | to _____ Feet  | Perforation Interval _____ to _____ Feet or Open Hole Interval _____ to _____ Feet |
| 2. _____       | At: _____     | to _____ Feet  | Perforation Interval _____ to _____ Feet or Open Hole Interval _____ to _____ Feet |

~~UNDER PENALTY OF PERJURY I HEREBY ATTEST THAT THE INFORMATION CONTAINED HEREIN IS TRUE AND CORRECT TO THE BEST OF MY KNOWLEDGE~~

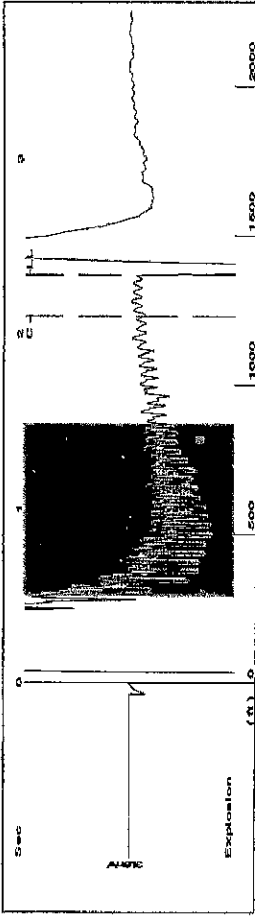
Submitted Electronically

|   |  |                |                     |                      |                                 |
|---|--|----------------|---------------------|----------------------|---------------------------------|
| <b>Do NOT Write in This Space - KCC USE ONLY</b>                                      | Date Tested: _____                         | Results: _____ | Date Plugged: _____ | Date Repaired: _____ | Date Put Back in Service: _____ |
|   | Review Completed by: _____ Comments: _____ |                |                     |                      |                                 |
| TA Approved: <input type="checkbox"/> Yes <input type="checkbox"/> Denied Date: _____ |  |                |                     |                      |                                 |

**Mail to the Appropriate KCC Conservation Office:**

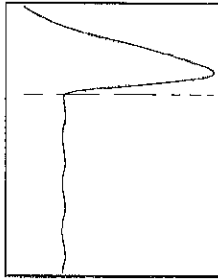
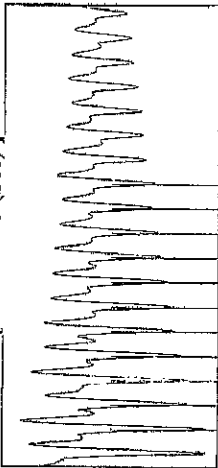
|  |   |                    |
|--|---|--------------------|
|  | KCC District Office #1 - 210 E. Frontview, Suite A, Dodge City, KS 67801                      | Phone 620.225.8888 |
|  | KCC District Office #2 / UPGS - 3450 N. Rock Road, Building 600, Suite 601, Wichita, KS 67226 | Phone 316.630.4000 |
|  | KCC District Office #3 - 1500 SW Seventh Steet, Chanute, KS 66720                             | Phone 620.432.2300 |
|  | KCC District Office #4 - 2301 E. 13th Street, Hays, KS 67601-2651                             | Phone 785.625.0550 |

Group: Examples Well: Albert 1 (acquired on: 11/14/12 07:25:24)



Filter Type High Pass Automatic Collar Count Yes  
 Manual Acoustic Velocity 1169.81 ft/s Manual JTS/sec 18.8679

[ 0.5 to 1.5 (Sec) ]



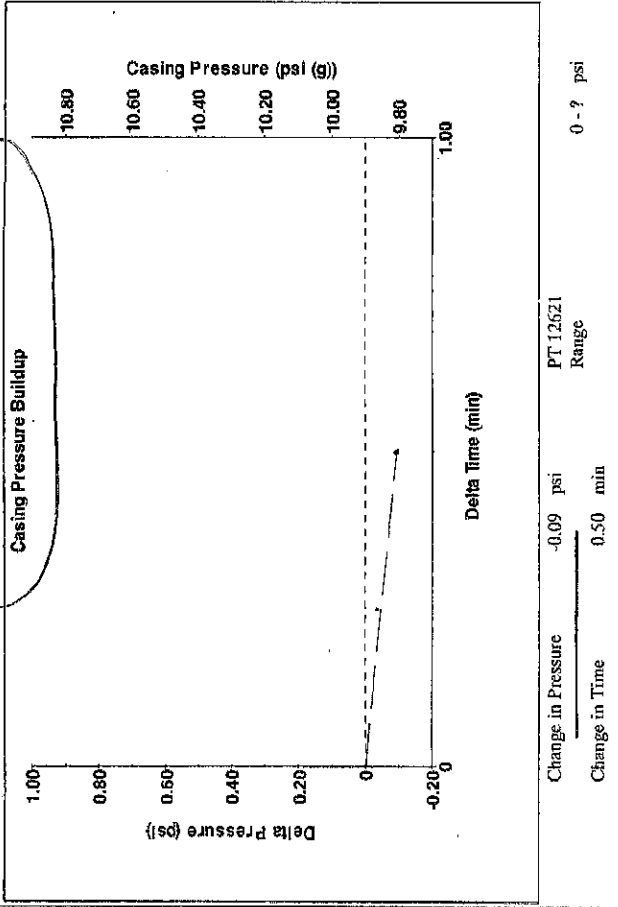
**Analysis Method: Automatic**

Group: Examples Well: Albert 1 (acquired on: 11/14/12 07:25:24)

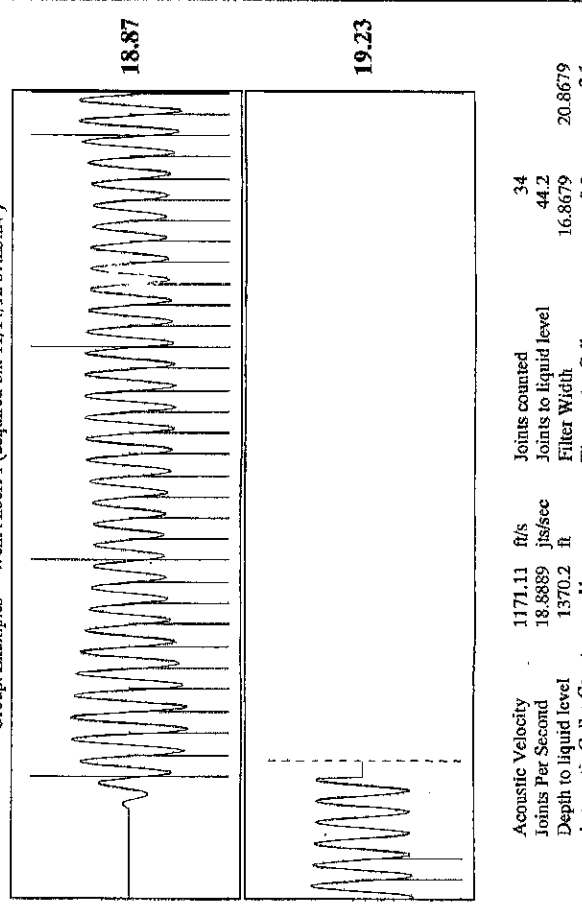
|                       |                    |                               |                     |
|-----------------------|--------------------|-------------------------------|---------------------|
| Production            | Potential          | Casing Pressure               | Static              |
| Oil - * -             | - * - BBL/D        | 9.9 psi (g)                   | Oil Column Height   |
| Water - * -           | - * - BBL/D        | Casing Pressure Buildup       | MD - * - ft         |
| Gas - * -             | - * - Mscf/D       | -0.1 psi                      | Water Column Height |
| IPR Method            | Vogel              | 0.50 min                      | MD - * - ft         |
| PEHP/SBHP             | - * -              | Gas/Liquid Interface Pressure | Static BHP          |
| Production Efficiency | 0.0                | - * - psi (g)                 | - * - psi (g)       |
| Oil 40 deg-API        | Liquid Level Depth |                               |                     |
| Water 1.05 Sp.Gr.H2O  | 1370.20 ft         |                               |                     |
| Gas 0.81 Sp.Gr.AIR    | Pump Intake Depth  |                               |                     |
| Acoustic Velocity     | 1171.11 ft/s       |                               |                     |
|                       | Formation Depth    |                               |                     |
|                       | 3000.00 ft         |                               |                     |

Acoustic Test

Group: Examples Well: Albert 1 (acquired on: 11/14/12 07:25:24)



Group: Examples Well: Albert 1 (acquired on: 11/14/12 07:25:24)



Acoustic Velocity 1171.11 ft/s Joints counted 34  
 Joints Per Second 18.8889 Joints to liquid level 44.2  
 Depth to liquid level 1370.2 ft Filter Width 16.8679 20.8679  
 Automatic Collar Count Yes Time to 1st Collar 0.3 2.1