



# TEMPORARY ABANDONMENT WELL APPLICATION

OPERATOR: License# \_\_\_\_\_  
 Name: \_\_\_\_\_  
 Address 1: \_\_\_\_\_  
 Address 2: \_\_\_\_\_  
 City: \_\_\_\_\_ State: \_\_\_\_\_ Zip: \_\_\_\_\_ + \_\_\_\_\_  
 Contact Person: \_\_\_\_\_  
 Phone: ( \_\_\_\_\_ ) \_\_\_\_\_  
 Contact Person Email: \_\_\_\_\_  
 Field Contact Person: \_\_\_\_\_  
 Field Contact Person Phone: ( \_\_\_\_\_ ) \_\_\_\_\_

API No. 15- \_\_\_\_\_  
 Spot Description: \_\_\_\_\_  
 \_\_\_\_\_ - \_\_\_\_\_ - \_\_\_\_\_ - \_\_\_\_\_ Sec. \_\_\_\_\_ Twp. \_\_\_\_\_ S. R. \_\_\_\_\_  E  W  
 \_\_\_\_\_ feet from  N /  S Line of Section  
 \_\_\_\_\_ feet from  E /  W Line of Section  
 GPS Location: Lat: \_\_\_\_\_, Long: \_\_\_\_\_  
(e.g. xx.xxxxx) (e.g. -xxx.xxxxx)  
 Datum:  NAD27  NAD83  WGS84  
 County: \_\_\_\_\_ Elevation: \_\_\_\_\_  GL  KB  
 Lease Name: \_\_\_\_\_ Well #: \_\_\_\_\_  
 Well Type: (check one)  Oil  Gas  OG  WSW  Other: \_\_\_\_\_  
 SWD Permit #: \_\_\_\_\_  ENHR Permit #: \_\_\_\_\_  
 Gas Storage Permit #: \_\_\_\_\_  
 Spud Date: \_\_\_\_\_ Date Shut-In: \_\_\_\_\_

	Conductor	Surface	Production	Intermediate	Liner	Tubing
Size						
Setting Depth						
Amount of Cement						
Top of Cement						
Bottom of Cement						

Casing Fluid Level from Surface: \_\_\_\_\_ How Determined? \_\_\_\_\_ Date: \_\_\_\_\_

Casing Squeeze(s): \_\_\_\_\_ to \_\_\_\_\_ w / \_\_\_\_\_ sacks of cement, \_\_\_\_\_ to \_\_\_\_\_ w / \_\_\_\_\_ sacks of cement. Date: \_\_\_\_\_  
(top) (bottom) (top) (bottom)

Do you have a valid Oil & Gas Lease?  Yes  No

Depth and Type:  Junk in Hole at \_\_\_\_\_  Tools in Hole at \_\_\_\_\_ Casing Leaks:  Yes  No Depth of casing leak(s): \_\_\_\_\_  
(depth) (depth)

Type Completion:  ALT. I  ALT. II Depth of:  DV Tool: \_\_\_\_\_ w / \_\_\_\_\_ sacks of cement  Port Collar: \_\_\_\_\_ w / \_\_\_\_\_ sack of cement  
(depth) (depth)

Packer Type: \_\_\_\_\_ Size: \_\_\_\_\_ Inch Set at: \_\_\_\_\_ Feet

Total Depth: \_\_\_\_\_ Plug Back Depth: \_\_\_\_\_ Plug Back Method: \_\_\_\_\_

**Geological Data:**

Formation Name	Formation Top	Formation Base	Completion Information
1. _____	At: _____	to _____ Feet	Perforation Interval _____ to _____ Feet or Open Hole Interval _____ to _____ Feet
2. _____	At: _____	to _____ Feet	Perforation Interval _____ to _____ Feet or Open Hole Interval _____ to _____ Feet

UNDER PENALTY OF PERJURY I HEREBY ATTEST THAT THE INFORMATION CONTAINED HEREIN IS TRUE AND CORRECT TO THE BEST OF MY KNOWLEDGE

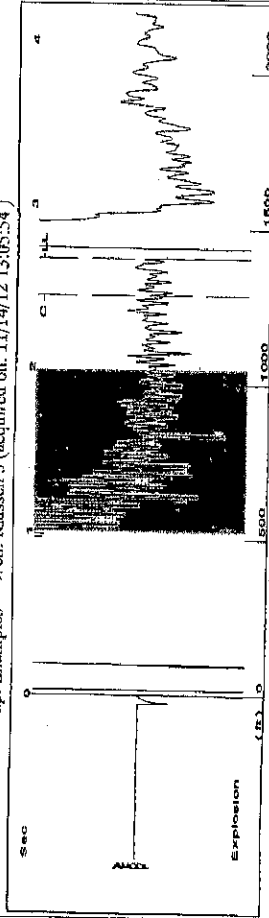
Submitted Electronically

<b>Do NOT Write in This Space - KCC USE ONLY</b>	Date Tested: _____	Results: _____	Date Plugged: _____	Date Repaired: _____	Date Put Back in Service: _____
	Review Completed by: _____ Comments: _____				
TA Approved: <input type="checkbox"/> Yes <input type="checkbox"/> Denied Date: _____					

**Mail to the Appropriate KCC Conservation Office:**

	KCC District Office #1 - 210 E. Frontview, Suite A, Dodge City, KS 67801	Phone 620.225.8888
	KCC District Office #2 / UPGS - 3450 N. Rock Road, Building 600, Suite 601, Wichita, KS 67226	Phone 316.630.4000
	KCC District Office #3 - 1500 SW Seventh Steet, Chanute, KS 66720	Phone 620.432.2300
	KCC District Office #4 - 2301 E. 13th Street, Hays, KS 67601-2651	Phone 785.625.0550

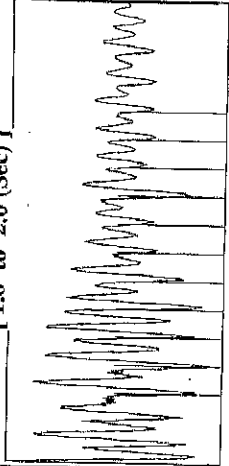
Group: Examples Well: Klassen 3 (acquired on: 11/14/12 13:05:54)



Filter Type High Pass  
 Manual Acoustic Velocity 1041.05 ft/s  
 Automatic Coiler Count Yes  
 Manual JTS/sec 16.4204

Time 2.665 sec  
 Joints 44.2528 Jts  
 Depth 1402.81 ft

[ 1.0 to 2.0 (Sec) ]



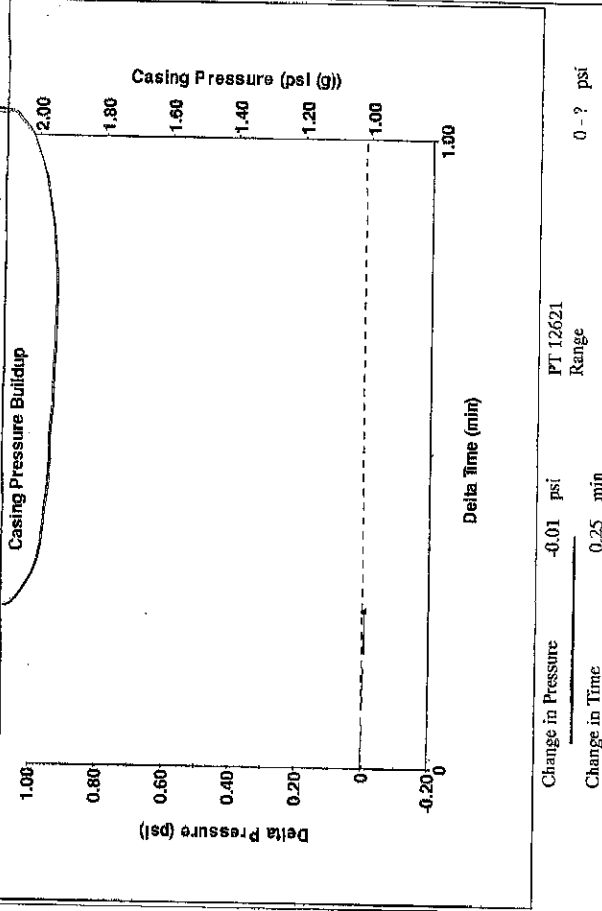
Analysis Method: Automatic

Group: Examples Well: Klassen 3 (acquired on: 11/14/12 13:05:54)

Production Current	Potential	Casing Pressure	Static
Oil - - -	- - - BBL/D	1.0 psi (g)	Oil Column Height
Water - - -	- - - BBL/D	-0.0 psi	MD - * - ft
Gas - - -	- - - Msc/D	0.25 min	Water Column Height
IPR Method	Vogel	Gas/Liquid Interface Pressure	MD - * - ft
PBHP/SBHP	- - -	- * - psi (g)	Static BHP
Production Efficiency	0.0	Liquid Level Depth	- * - psi (g)
Oil 40 deg API		1402.81 ft	
Water 1.05 Sp.Gr.H2O		Pump Inake Depth	
Gas 0.92 Sp.Gr.AIR		- * - ft	
Acoustic Velocity	1052.77 ft/s	Formation Depth	
		3325.00 f.	

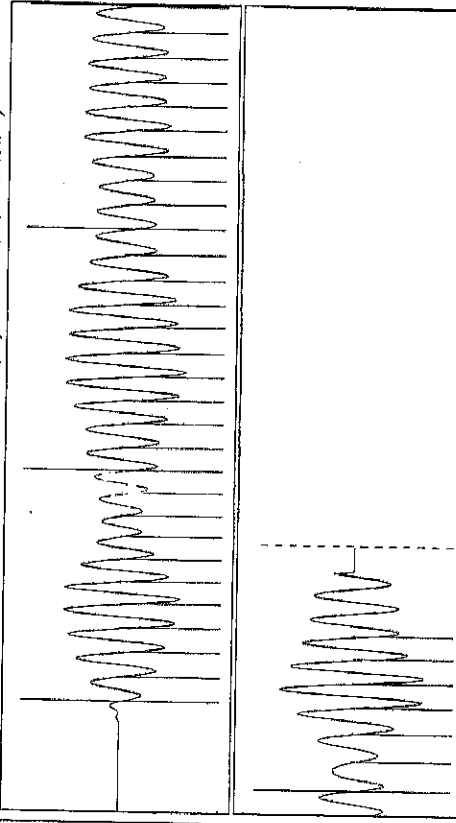
Acoustic Test

Group: Examples Well: Klassen 3 (acquired on: 11/14/12 13:05:54)



Change in Pressure -0.01 psi  
 Change in Time 0.25 min  
 PT 12621  
 Range

Group: Examples Well: Klassen 3 (acquired on: 11/14/12 13:05:54)



Acoustic Velocity	1052.77 ft/s	Joints counted	36
Joints Per Second	16.6052 Jts/sec	Joints to liquid level	44.2528
Depth to liquid level	1402.81 ft	Filter Width	14.4204
Automatic Coiler Count	Yes	Time to 1st Collar	2.44

Conservation Division  
District Office No. 2  
3450 N. Rock Road  
Building 600, Suite 601  
Wichita, KS 67226



Phone: 316-630-4000  
Fax: 316-630-4005  
<http://kcc.ks.gov/>

Mark Sievers, Chairman  
Thomas E. Wright, Commissioner  
Shari Feist Albrecht, Commissioner

Sam Brownback, Governor

December 14, 2012

Mindy Wooten  
Trek AEC, LLC  
155 N MARKET STE 710  
WICHITA, KS 67202-1821

Re: Temporary Abandonment  
API 15-115-20457-00-00  
KLASSEN 3  
SW/4 Sec.27-19S-01E  
Marion County, Kansas

Dear Mindy Wooten:

Your application for Temporary Abandonment (TA) of the above-listed well is denied for the following reasons(s):

**OVR10 - Shut in over 10 years**

In accordance with K.A.R. 82-3-111, this well must be plugged or returned to service by January 13, 2013.

You may file an application for an exception to the 10-year limitation in K.A.R. 82-3-111 to demonstrate why it is necessary to TA the above well for more than (10) years. You must notify the Commission in writing no later than January 13, 2013 of your intention to file the application, and your complete application is due February 12, 2013. All applications and written notifications must be sent to the attention of the Executive Director at the Kansas Corporation Commission Conservation Division at 130 South Market, Room 2078, Wichita, Kansas 67202.

You may contact me at the number above if you have any questions.

Sincerely,

Hunter Clark