



Confidentiality Requested:

Yes No

KANSAS CORPORATION COMMISSION 1100188
OIL & GAS CONSERVATION DIVISION

Form ACO-1

August 2013

Form must be Typed
Form must be Signed
All blanks must be Filled

WELL COMPLETION FORM
WELL HISTORY - DESCRIPTION OF WELL & LEASE

OPERATOR: License # _____

Name: _____

Address 1: _____

Address 2: _____

City: _____ State: _____ Zip: _____ + _____

Contact Person: _____

Phone: (_____) _____

CONTRACTOR: License # _____

Name: _____

Wellsite Geologist: _____

Purchaser: _____

Designate Type of Completion:

- New Well Re-Entry Workover
- Oil WSW SWD SIOW
- Gas D&A ENHR SIGW
- OG GSW Temp. Abd.
- CM (Coal Bed Methane)
- Cathodic Other (Core, Expl., etc.): _____

If Workover/Re-entry: Old Well Info as follows:

Operator: _____

Well Name: _____

Original Comp. Date: _____ Original Total Depth: _____

- Deepening Re-perf. Conv. to ENHR Conv. to SWD
- Plug Back Conv. to GSW Conv. to Producer
- Commingled Permit #: _____
- Dual Completion Permit #: _____
- SWD Permit #: _____
- ENHR Permit #: _____
- GSW Permit #: _____

Spud Date or Recompletion Date	Date Reached TD	Completion Date or Recompletion Date
-----------------------------------	-----------------	---

API No. 15 - _____

Spot Description: _____

_____ - _____ - _____ Sec. _____ Twp. _____ S. R. _____ East West

_____ Feet from North / South Line of Section

_____ Feet from East / West Line of Section

Footages Calculated from Nearest Outside Section Corner:

- NE NW SE SW

GPS Location: Lat: _____, Long: _____
(e.g. xx.xxxxx) (e.g. -xxx.xxxxx)

Datum: NAD27 NAD83 WGS84

County: _____

Lease Name: _____ Well #: _____

Field Name: _____

Producing Formation: _____

Elevation: Ground: _____ Kelly Bushing: _____

Total Vertical Depth: _____ Plug Back Total Depth: _____

Amount of Surface Pipe Set and Cemented at: _____ Feet

Multiple Stage Cementing Collar Used? Yes No

If yes, show depth set: _____ Feet

If Alternate II completion, cement circulated from: _____

feet depth to: _____ w/ _____ sx cmt.

Drilling Fluid Management Plan

(Data must be collected from the Reserve Pit)

Chloride content: _____ ppm Fluid volume: _____ bbls

Dewatering method used: _____

Location of fluid disposal if hauled offsite:

Operator Name: _____

Lease Name: _____ License #: _____

Quarter _____ Sec. _____ Twp. _____ S. R. _____ East West

County: _____ Permit #: _____

AFFIDAVIT

I am the affiant and I hereby certify that all requirements of the statutes, rules and regulations promulgated to regulate the oil and gas industry have been fully complied with and the statements herein are complete and correct to the best of my knowledge.

Submitted Electronically

KCC Office Use ONLY

- Confidentiality Requested
Date: _____
- Confidential Release Date: _____
- Wireline Log Received
- Geologist Report Received
- UIC Distribution
- ALT I II III Approved by: _____ Date: _____



1100188

Operator Name: _____ Lease Name: _____ Well #: _____

Sec. _____ Twp. _____ S. R. _____ East West County: _____

INSTRUCTIONS: Show important tops of formations penetrated. Detail all cores. Report all final copies of drill stems tests giving interval tested, time tool open and closed, flowing and shut-in pressures, whether shut-in pressure reached static level, hydrostatic pressures, bottom hole temperature, fluid recovery, and flow rates if gas to surface test, along with final chart(s). Attach extra sheet if more space is needed.

Final Radioactivity Log, Final Logs run to obtain Geophysical Data and Final Electric Logs must be emailed to kcc-well-logs@kcc.ks.gov. Digital electronic log files must be submitted in LAS version 2.0 or newer AND an image file (TIFF or PDF).

Drill Stem Tests Taken <i>(Attach Additional Sheets)</i>	<input type="checkbox"/> Yes <input type="checkbox"/> No	<input type="checkbox"/> Log	Formation (Top), Depth and Datum	<input type="checkbox"/> Sample
Samples Sent to Geological Survey	<input type="checkbox"/> Yes <input type="checkbox"/> No	Name	Top	Datum
Cores Taken	<input type="checkbox"/> Yes <input type="checkbox"/> No			
Electric Log Run	<input type="checkbox"/> Yes <input type="checkbox"/> No			
List All E. Logs Run:				

CASING RECORD <input type="checkbox"/> New <input type="checkbox"/> Used							
Report all strings set-conductor, surface, intermediate, production, etc.							
Purpose of String	Size Hole Drilled	Size Casing Set (In O.D.)	Weight Lbs. / Ft.	Setting Depth	Type of Cement	# Sacks Used	Type and Percent Additives

ADDITIONAL CEMENTING / SQUEEZE RECORD				
Purpose:	Depth Top Bottom	Type of Cement	# Sacks Used	Type and Percent Additives
<input type="checkbox"/> Perforate				
<input type="checkbox"/> Protect Casing				
<input type="checkbox"/> Plug Back TD				
<input type="checkbox"/> Plug Off Zone				

Did you perform a hydraulic fracturing treatment on this well? Yes No *(If No, skip questions 2 and 3)*

Does the volume of the total base fluid of the hydraulic fracturing treatment exceed 350,000 gallons? Yes No *(If No, skip question 3)*

Was the hydraulic fracturing treatment information submitted to the chemical disclosure registry? Yes No *(If No, fill out Page Three of the ACO-1)*

Shots Per Foot	PERFORATION RECORD - Bridge Plugs Set/Type Specify Footage of Each Interval Perforated	Acid, Fracture, Shot, Cement Squeeze Record <i>(Amount and Kind of Material Used)</i>	Depth

TUBING RECORD: Size: _____ Set At: _____ Packer At: _____ Liner Run: Yes No

Date of First, Resumed Production, SWD or ENHR: _____ Producing Method:
 Flowing Pumping Gas Lift Other *(Explain)* _____

Estimated Production Per 24 Hours	Oil Bbls.	Gas Mcf	Water Bbls.	Gas-Oil Ratio	Gravity

DISPOSITION OF GAS: <input type="checkbox"/> Vented <input type="checkbox"/> Sold <input type="checkbox"/> Used on Lease <i>(If vented, Submit ACO-18.)</i>	METHOD OF COMPLETION: <input type="checkbox"/> Open Hole <input type="checkbox"/> Perf. <input type="checkbox"/> Dually Comp. <input type="checkbox"/> Commingled <i>(Submit ACO-5)</i> <i>(Submit ACO-4)</i> <input type="checkbox"/> Other <i>(Specify)</i> _____	PRODUCTION INTERVAL: _____ _____
--	---	---

Form	ACO1 - Well Completion
Operator	Shelby Resources LLC
Well Name	Penney 1-16
Doc ID	1100188

All Electric Logs Run

Dual Induction
Compensated Neutron
Micro
Sonic
Cement Bond



DRILL STEM TEST REPORT

Prepared For: **Shelby Resources**

2717 Canal Blvd. Hays Kansas 67601

ATTN: Charlie Sturdavant

Penny 1-16

16-19s-12w-Barton

Start Date: 2012.10.03 @ 01:01:00

End Date: 2012.10.03 @ 07:33:30

Job Ticket #: 17275 DST #: 1

Superior Testers Enterprises LLC
PO Box 138 Great Bend KS 67530
1-800-792-6902

Printed: 2012.10.03 @ 05:47:24



DRILL STEM TEST REPORT

Shelby Resources
 2717 Canal Blvd. Hays Kansas 67601
 ATTN: Charlie Sturdavant

16-19s-12w-Barton
Penny 1-16
 Job Ticket: 17275 **DST#: 1**
 Test Start: 2012.10.03 @ 01:01:00

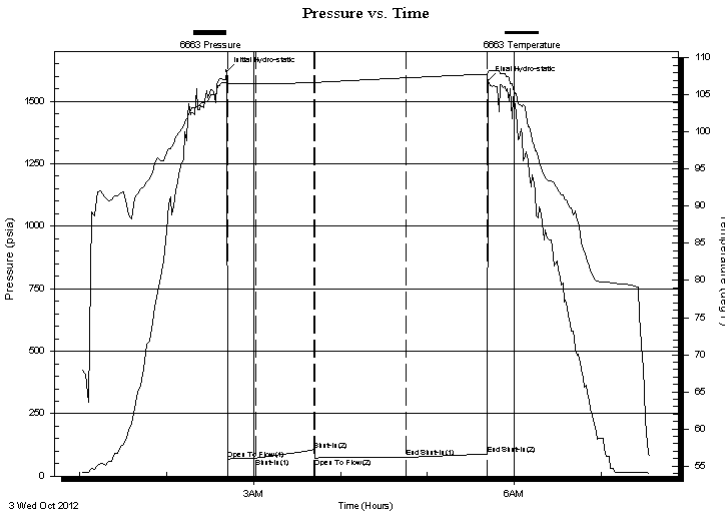
GENERAL INFORMATION:

Formation: **Lansing A-F**
 Deviated: No Whipstock: ft (KB)
 Time Tool Opened: 02:42:00
 Time Test Ended: 07:33:30
 Interval: **3180.00 ft (KB) To 3260.00 ft (KB) (TVD)**
 Total Depth: 3260.00 ft (KB) (TVD)
 Hole Diameter: 7.88 inches Hole Condition: Fair
 Test Type: Conventional Bottom Hole (Initial)
 Tester: Dustin Ellis
 Unit No: 3315-Great Bend-25
 Reference Elevations: 1883.00 ft (KB)
 1874.00 ft (CF)
 KB to GR/CF: 9.00 ft

Serial #: 6663 Inside
 Press @ Run Depth: 71.64 psia @ 3256.27 ft (KB) Capacity: 5000.00 psia
 Start Date: 2012.10.03 End Date: 2012.10.03 Last Calib.: 2012.10.03
 Start Time: 01:01:00 End Time: 07:33:30 Time On Btm: 2012.10.03 @ 02:41:30
 Time Off Btm: 2012.10.03 @ 05:42:00

TEST COMMENT: 1st Open 15 minutes Very weak surface blow.
 1st Shut in 45 minutes No blow back
 2nd Open 60 minutes Weak surface blow
 2nd Shut in 60 minutes No blow back

PRESSURE SUMMARY



Time (Min.)	Pressure (psia)	Temp (deg F)	Annotation
0	1620.21	106.78	Initial Hydro-static
1	68.20	106.48	Open To Flow (1)
20	71.64	106.47	Shut-In(1)
60	105.10	106.71	Shut-In(2)
61	72.08	106.70	Open To Flow (2)
124	75.16	107.32	End Shut-In(1)
180	88.42	107.81	End Shut-In(2)
181	1583.44	108.16	Final Hydro-static

Recovery

Length (ft)	Description	Volume (bbl)
5.00	Mud 100%	0.02

Gas Rates

Choke (inches)	Pressure (psia)	Gas Rate (Mcf/d)



DRILL STEM TEST REPORT

Shelby Resources
 2717 Canal Blvd. Hays Kansas 67601
 ATTN: Charlie Sturdavant

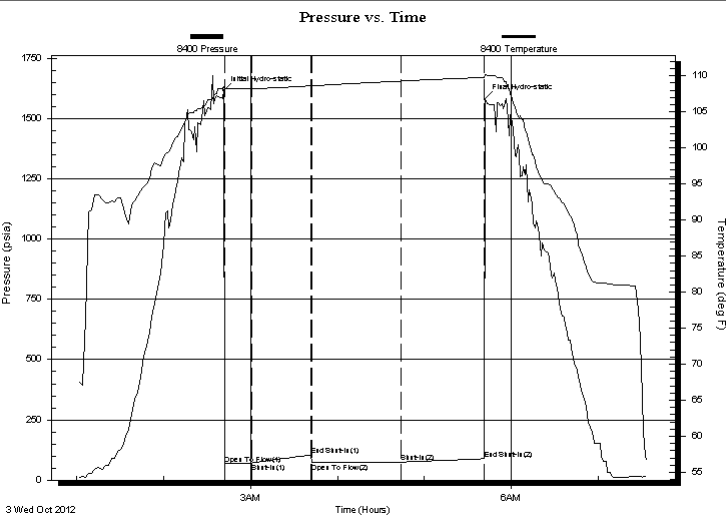
16-19s-12w-Barton
Penny 1-16
 Job Ticket: 17275 **DST#: 1**
 Test Start: 2012.10.03 @ 01:01:00

GENERAL INFORMATION:

Formation: **Lansing A-F**
 Deviated: No Whipstock: ft (KB)
 Time Tool Opened: 02:42:00
 Time Test Ended: 07:33:30
 Interval: **3180.00 ft (KB) To 3260.00 ft (KB) (TVD)**
 Total Depth: 3260.00 ft (KB) (TVD)
 Hole Diameter: 7.88 inches Hole Condition: Fair
 Test Type: Conventional Bottom Hole (Initial)
 Tester: Dustin Ellis
 Unit No: 3315-Great Bend-25
 Reference Elevations: 1883.00 ft (KB)
 1874.00 ft (CF)
 KB to GR/CF: 9.00 ft

Serial #: 8400 Outside
 Press @ Run Depth: 88.58 psia @ 3257.27 ft (KB) Capacity: 5000.00 psia
 Start Date: 2012.10.03 End Date: 2012.10.03 Last Calib.: 2012.10.03
 Start Time: 01:01:00 End Time: 07:33:30 Time On Btm: 2012.10.03 @ 02:41:30
 Time Off Btm: 2012.10.03 @ 05:42:00

TEST COMMENT: 1st Open 15 minutes Very weak surface blow.
 1st Shut in 45 minutes No blow back
 2nd Open 60 minutes Weak surface blow
 2nd Shut in 60 minutes No blow back



PRESSURE SUMMARY

Time (Min.)	Pressure (psia)	Temp (deg F)	Annotation
0	1616.34	108.45	Initial Hydro-static
1	67.57	108.09	Open To Flow (1)
20	71.08	108.22	Shut-In(1)
60	104.88	108.63	End Shut-In(1)
61	71.69	108.62	Open To Flow (2)
123	74.93	109.28	Shut-In(2)
180	88.58	109.78	End Shut-In(2)
181	1582.00	110.20	Final Hydro-static

Recovery

Length (ft)	Description	Volume (bbl)
5.00	Mud 100%	0.02

Gas Rates

Choke (inches)	Pressure (psia)	Gas Rate (Mcf/d)



DRILL STEM TEST REPORT

TOOL DIAGRAM

Shelby Resources
 2717 Canal Blvd. Hays Kansas 67601
 ATTN: Charlie Sturdavant

16-19s-12w-Barton
Penny 1-16
 Job Ticket: 17275 **DST#: 1**
 Test Start: 2012.10.03 @ 01:01:00

Tool Information

Drill Pipe:	Length: 2967.00 ft	Diameter: 3.80 inches	Volume: 41.62 bbl	Tool Weight:	2000.00 lb
Heavy Wt. Pipe:	Length: 0.00 ft	Diameter: 0.00 inches	Volume: 0.00 bbl	Weight set on Packer:	20000.00 lb
Drill Collar:	Length: 216.25 ft	Diameter: 2.25 inches	Volume: 1.06 bbl	Weight to Pull Loose:	62000.00 lb
			<u>Total Volume: 42.68 bbl</u>	Tool Chased	0.00 ft
Drill Pipe Above KB:	23.25 ft			String Weight: Initial	60000.00 lb
Depth to Top Packer:	3180.00 ft			Final	60000.00 lb
Depth to Bottom Packer:	ft				
Interval between Packers:	80.27 ft				
Tool Length:	100.27 ft				
Number of Packers:	2	Diameter: 6.75 inches			
Tool Comments:					

Tool Description	Length (ft)	Serial No.	Position	Depth (ft)	Accum. Lengths
-------------------------	--------------------	-------------------	-----------------	-------------------	-----------------------

Shut-In Tool	5.00			3165.00	
Hydraulic Tool	5.00			3170.00	
Packer	5.00			3175.00	20.00 Bottom Of Top Packer
Packer	5.00			3180.00	
Anchor	5.00			3185.00	
Change Over Sub	0.75			3185.75	
Drill Pipe	61.77			3247.52	
Change Over Sub	0.75			3248.27	
Anchor	7.00			3255.27	
Recorder	1.00	6663	Inside	3256.27	
Recorder	1.00	8400	Outside	3257.27	
Bull Plug	3.00			3260.27	80.27 Bottom Packers & Anchor

Total Tool Length: 100.27



DRILL STEM TEST REPORT

FLUID SUMMARY

Shelby Resources
2717 Canal Blvd. Hays Kansas 67601
ATTN: Charlie Sturdavant

16-19s-12w-Barton
Penny 1-16
Job Ticket: 17275 **DST#: 1**
Test Start: 2012.10.03 @ 01:01:00

Mud and Cushion Information

Mud Type: Gel Chem	Cushion Type:	Oil API:	deg API
Mud Weight: 9.00 lb/gal	Cushion Length: ft	Water Salinity:	ppm
Viscosity: 49.00 sec/qt	Cushion Volume: bbl		
Water Loss: 8.00 in ³	Gas Cushion Type:		
Resistivity: ohm.m	Gas Cushion Pressure: psia		
Salinity: 8200.00 ppm			
Filter Cake: 1.00 inches			

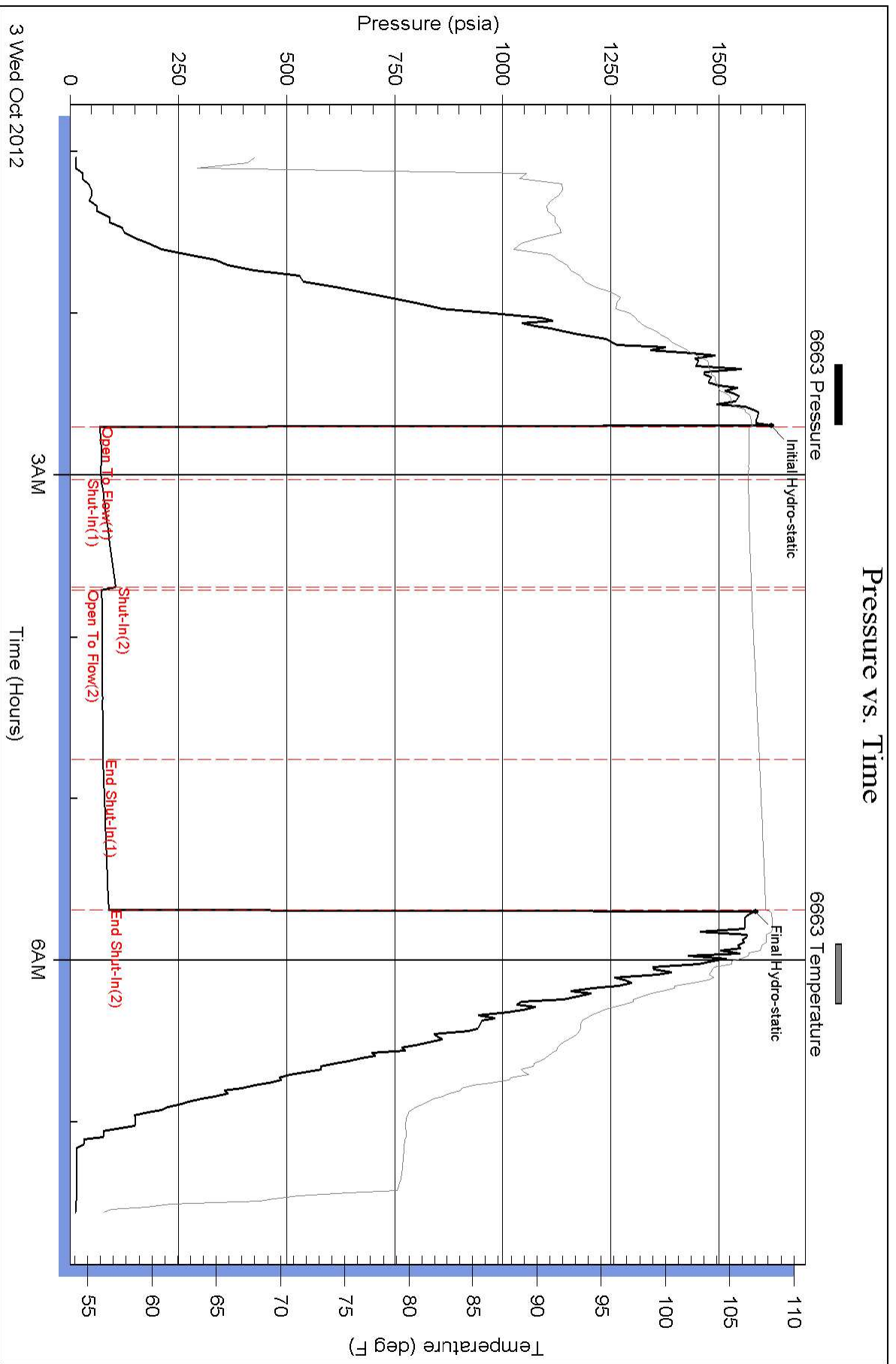
Recovery Information

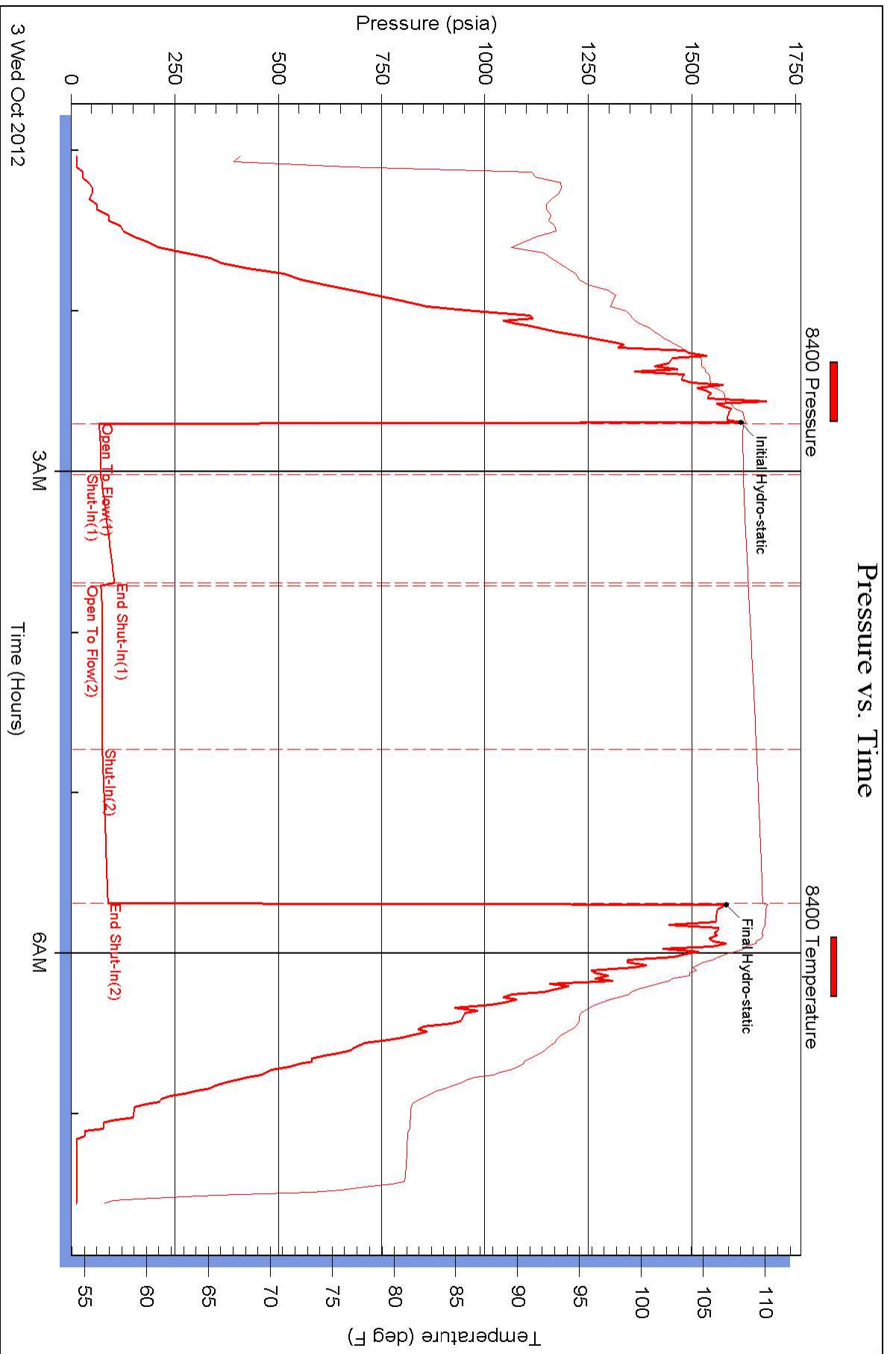
Recovery Table

Length ft	Description	Volume bbl
5.00	Mud 100%	0.025

Total Length: 5.00 ft Total Volume: 0.025 bbl
Num Fluid Samples: 0 Num Gas Bombs: 0 Serial #:
Laboratory Name: Laboratory Location:
Recovery Comments:

Pressure vs. Time







DRILL STEM TEST REPORT

Prepared For: **Shelby Resources**

2717 Canal Blvd. Hays Kansas 67601

ATTN: Charlie Sturdavant

Penny 1-16

16-19s-12w-Barton

Start Date: 2012.10.04 @ 03:52:00

End Date: 2012.10.04 @ 10:07:00

Job Ticket #: 17851 DST #: 2

Superior Testers Enterprises LLC
PO Box 138 Great Bend KS 67530
1-800-792-6902

Printed: 2012.10.04 @ 08:21:59



DRILL STEM TEST REPORT

Shelby Resources
 2717 Canal Blvd. Hays Kansas 67601
 ATTN: Charlie Sturdavant

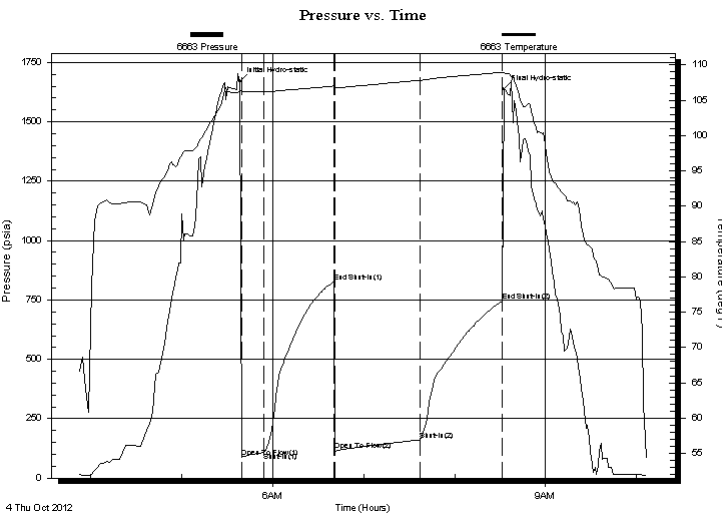
16-19s-12w-Barton
Penny 1-16
 Job Ticket: 17851 **DST#: 2**
 Test Start: 2012.10.04 @ 03:52:00

GENERAL INFORMATION:

Formation: **Kansas City**
 Deviated: No Whipstock: ft (KB)
 Time Tool Opened: 05:39:30
 Time Test Ended: 10:07:00
Interval: 3304.00 ft (KB) To 3420.00 ft (KB) (TVD)
 Total Depth: 3420.00 ft (KB) (TVD)
 Hole Diameter: 7.88 inches Hole Condition: Fair
 Test Type: Conventional Bottom Hole (Initial)
 Tester: Dustin Ellis
 Unit No: 3315-Great Bend-25
 Reference Elevations: 1883.00 ft (KB)
 1874.00 ft (CF)
 KB to GR/CF: 9.00 ft

Serial #: 6663 Inside
 Press @ RunDepth: 160.81 psia @ 3416.51 ft (KB) Capacity: 5000.00 psia
 Start Date: 2012.10.04 End Date: 2012.10.04 Last Calib.: 2012.10.04
 Start Time: 03:52:00 End Time: 10:07:00 Time On Btm: 2012.10.04 @ 05:38:30
 Time Off Btm: 2012.10.04 @ 08:32:30

TEST COMMENT: 1st Open 15 minutes Fair blow blew 2 inches.
 1st Shut in 45 minutes No blow back
 2nd Open 60 minutes Fair blow blew bottom bucket 23 minutes
 2nd Shut in 60 minutes No blow back



PRESSURE SUMMARY

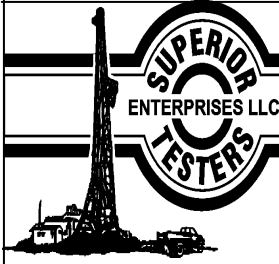
Time (Min.)	Pressure (psia)	Temp (deg F)	Annotation
0	1669.39	106.43	Initial Hydro-static
1	89.33	106.16	Open To Flow (1)
16	106.94	106.19	Shut-In(1)
62	826.39	107.00	End Shut-In(1)
63	118.71	106.82	Open To Flow (2)
119	160.81	107.81	Shut-In(2)
173	744.97	108.94	End Shut-In(2)
174	1637.92	108.88	Final Hydro-static

Recovery

Length (ft)	Description	Volume (bbl)
20.00	Mud cut oil 10% Oil 90% Mud	0.10
122.00	Mud cut gassy oil	0.60
0.00	Gas 30% Oil 20% Mud 50%	0.00

Gas Rates

Choke (inches)	Pressure (psia)	Gas Rate (Mcf/d)



DRILL STEM TEST REPORT

Shelby Resources
 2717 Canal Blvd. Hays Kansas 67601
 ATTN: Charlie Sturdavant

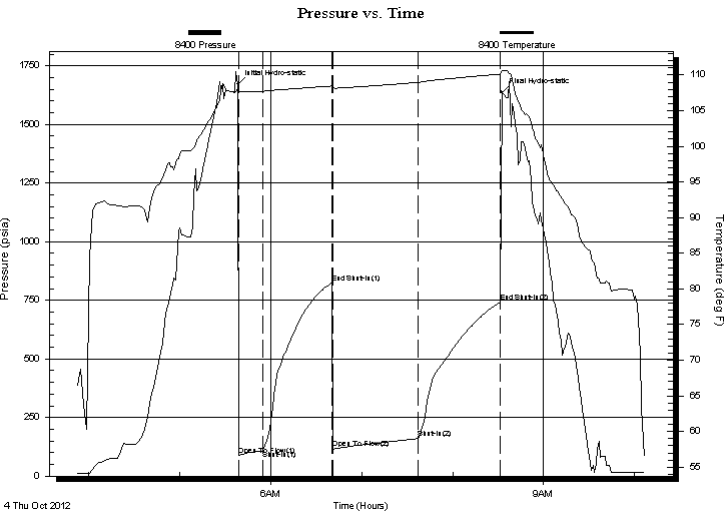
16-19s-12w-Barton
Penny 1-16
 Job Ticket: 17851 **DST#: 2**
 Test Start: 2012.10.04 @ 03:52:00

GENERAL INFORMATION:

Formation: **Kansas City**
 Deviated: No Whipstock: ft (KB)
 Test Type: Conventional Bottom Hole (Initial)
 Time Tool Opened: 05:39:30 Tester: Dustin Ellis
 Time Test Ended: 10:07:00 Unit No: 3315-Great Bend-25
 Interval: **3304.00 ft (KB) To 3420.00 ft (KB) (TVD)** Reference Elevations: 1883.00 ft (KB)
 Total Depth: 3420.00 ft (KB) (TVD) 1874.00 ft (CF)
 Hole Diameter: 7.88 inches Hole Condition: Fair KB to GR/CF: 9.00 ft

Serial #: 8400 Outside
 Press @ RunDepth: 743.90 psia @ 3417.51 ft (KB) Capacity: 5000.00 psia
 Start Date: 2012.10.04 End Date: 2012.10.04 Last Calib.: 2012.10.04
 Start Time: 03:52:00 End Time: 10:07:00 Time On Btm: 2012.10.04 @ 05:38:30
 Time Off Btm: 2012.10.04 @ 08:32:30

TEST COMMENT: 1st Open 15 minutes Fair blow blew 2 inches.
 1st Shut in 45 minutes No blow back
 2nd Open 60 minutes Fair blow blew bottom bucket 23 minutes
 2nd Shut in 60 minutes No blow back



PRESSURE SUMMARY

Time (Min.)	Pressure (psia)	Temp (deg F)	Annotation
0	1671.84	108.12	Initial Hydro-static
1	88.18	107.65	Open To Flow (1)
17	110.15	107.73	Shut-In (1)
62	825.06	108.45	End Shut-In (1)
63	117.34	108.18	Open To Flow (2)
119	159.66	108.96	Shut-In (2)
173	743.90	110.11	End Shut-In (2)
174	1636.64	110.59	Final Hydro-static

Recovery

Length (ft)	Description	Volume (bbl)
20.00	Mud cut oil 10% Oil 90% Mud	0.10
122.00	Mud cut gassy oil	0.60
0.00	Gas 30% Oil 20% Mud 50%	0.00

Gas Rates

Choke (inches)	Pressure (psia)	Gas Rate (Mcf/d)



DRILL STEM TEST REPORT

TOOL DIAGRAM

Shelby Resources
 2717 Canal Blvd. Hays Kansas 67601
 ATTN: Charlie Sturdavant

16-19s-12w-Barton
Penny 1-16
 Job Ticket: 17851 **DST#: 2**
 Test Start: 2012.10.04 @ 03:52:00

Tool Information

Drill Pipe:	Length: 3075.00 ft	Diameter: 3.80 inches	Volume: 43.13 bbl	Tool Weight:	2000.00 lb
Heavy Wt. Pipe:	Length: 0.00 ft	Diameter: 0.00 inches	Volume: 0.00 bbl	Weight set on Packer:	20000.00 lb
Drill Collar:	Length: 216.25 ft	Diameter: 2.25 inches	Volume: 1.06 bbl	Weight to Pull Loose:	64000.00 lb
			<u>Total Volume: 44.19 bbl</u>	Tool Chased	0.00 ft
Drill Pipe Above KB:	7.25 ft			String Weight: Initial	61000.00 lb
Depth to Top Packer:	3304.00 ft			Final	61000.00 lb
Depth to Bottom Packer:	ft				
Interval between Packers:	116.51 ft				
Tool Length:	136.51 ft				
Number of Packers:	2	Diameter: 6.75 inches			

Tool Comments:

Tool Description	Length (ft)	Serial No.	Position	Depth (ft)	Accum. Lengths
Shut-In Tool	5.00			3289.00	
Hydraulic Tool	5.00			3294.00	
Packer	5.00			3299.00	20.00 Bottom Of Top Packer
Packer	5.00			3304.00	
Anchor	5.00			3309.00	
Change Over Sub	0.75			3309.75	
Drill Pipe	94.01			3403.76	
Change Over Sub	0.75			3404.51	
Anchor	11.00			3415.51	
Recorder	1.00	6663	Inside	3416.51	
Recorder	1.00	8400	Outside	3417.51	
Bull Plug	3.00			3420.51	116.51 Bottom Packers & Anchor

Total Tool Length: 136.51



DRILL STEM TEST REPORT

FLUID SUMMARY

Shelby Resources
 2717 Canal Blvd. Hays Kansas 67601
 ATTN: Charlie Sturdavant

16-19s-12w-Barton
Penny 1-16
 Job Ticket: 17851 **DST#: 2**
 Test Start: 2012.10.04 @ 03:52:00

Mud and Cushion Information

Mud Type: Gel Chem	Cushion Type:	Oil API:	deg API
Mud Weight: 9.00 lb/gal	Cushion Length: ft	Water Salinity:	ppm
Viscosity: 48.00 sec/qt	Cushion Volume: bbl		
Water Loss: 8.80 in ³	Gas Cushion Type:		
Resistivity: ohm.m	Gas Cushion Pressure: psia		
Salinity: 14600.00 ppm			
Filter Cake: 1.00 inches			

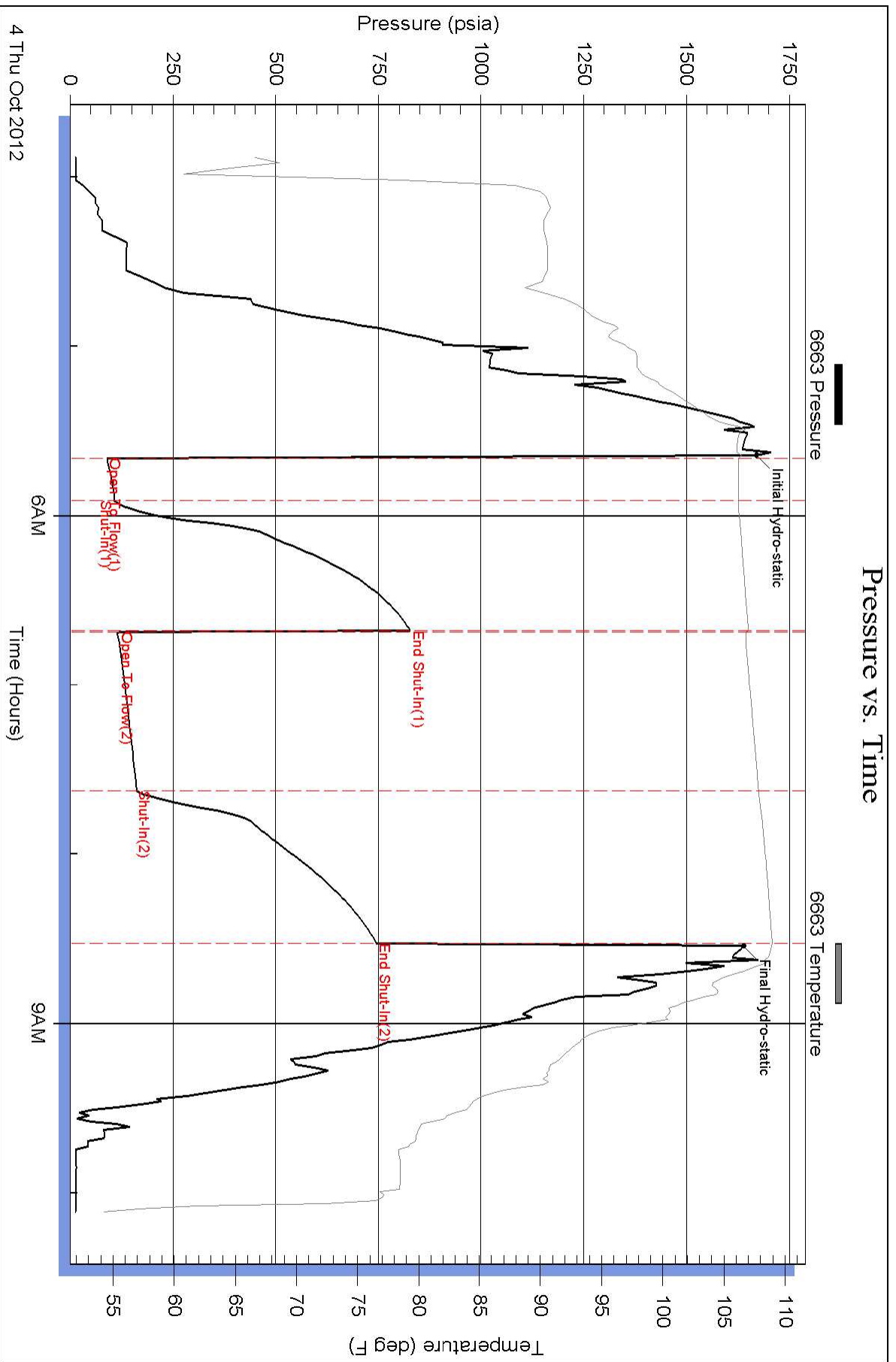
Recovery Information

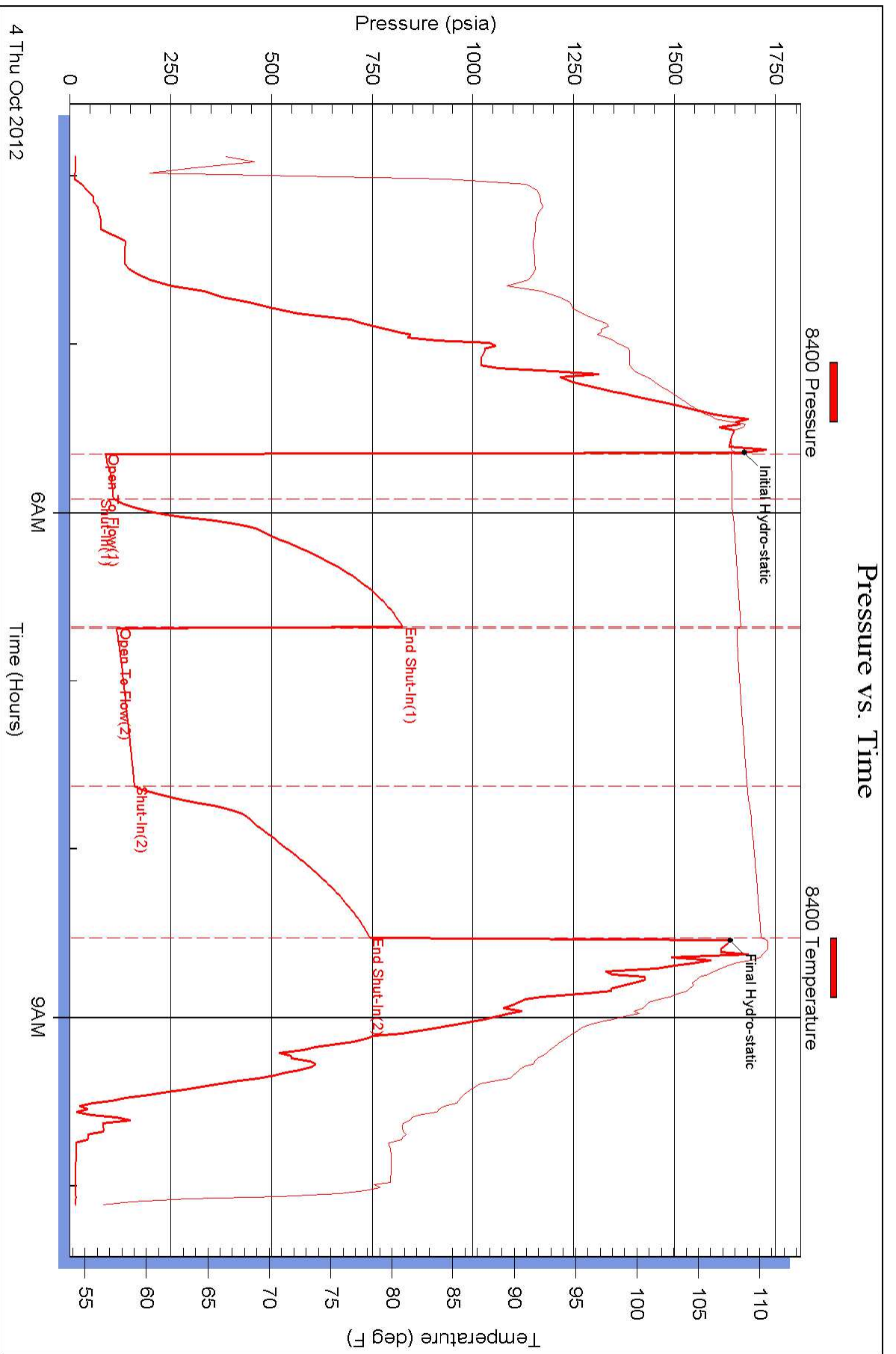
Recovery Table

Length ft	Description	Volume bbl
20.00	Mud cut oil 10%Oil 90%Mud	0.098
122.00	Mud cut gassy oil	0.600
0.00	Gas 30% Oil 20% Mud 50%	0.000

Total Length: 142.00 ft Total Volume: 0.698 bbl
 Num Fluid Samples: 0 Num Gas Bombs: 0 Serial #:
 Laboratory Name: Laboratory Location:
 Recovery Comments:

Pressure vs. Time







DRILL STEM TEST REPORT

Prepared For: **Shelby Resources**

2717 Canal Blvd. Hays Kansas 67601

ATTN: Charlie Sturdavant

Penny 1-16

16-19s-12w-Barton

Start Date: 2012.10.04 @ 05:40:00

End Date: 2012.10.04 @ 13:23:00

Job Ticket #: 17852 DST #: 3

Superior Testers Enterprises LLC
PO Box 138 Great Bend KS 67530
1-800-792-6902

Printed: 2012.10.04 @ 23:43:40



DRILL STEM TEST REPORT

Shelby Resources
 2717 Canal Blvd. Hays Kansas 67601
 ATTN: Charlie Sturdavant

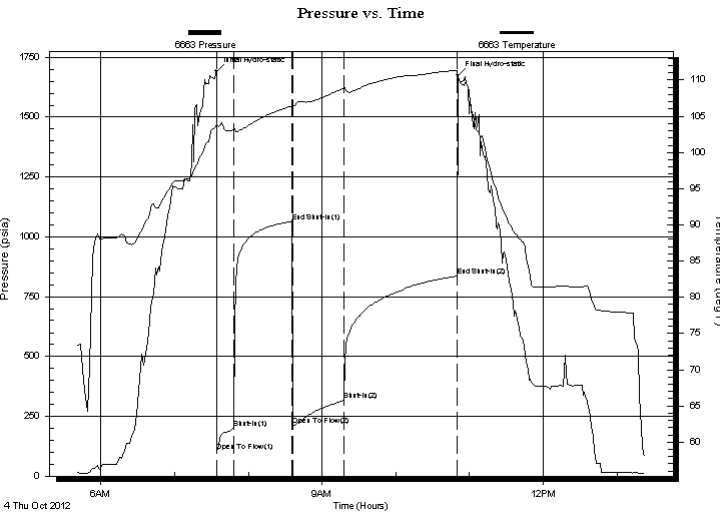
16-19s-12w-Barton
Penny 1-16
 Job Ticket: 17852 **DST#: 3**
 Test Start: 2012.10.04 @ 05:40:00

GENERAL INFORMATION:

Formation: **Arbuckle**
 Deviated: No Whipstock: ft (KB)
 Test Type: Conventional Bottom Hole (Initial)
 Time Tool Opened: 07:34:30 Tester: Dustin Ellis
 Time Test Ended: 13:23:00 Unit No: 3315-Great Bend-25
 Interval: **3408.00 ft (KB) To 3460.00 ft (KB) (TVD)** Reference Elevations: 1883.00 ft (KB)
 Total Depth: 3460.00 ft (KB) (TVD) 1874.00 ft (CF)
 Hole Diameter: 7.88 inches Hole Condition: Fair KB to GR/CF: 9.00 ft

Serial #: 6663 Inside
 Press @ Run Depth: 316.57 psia @ 3456.72 ft (KB) Capacity: 5000.00 psia
 Start Date: 2012.10.04 End Date: 2012.10.04 Last Calib.: 2012.10.04
 Start Time: 05:40:00 End Time: 13:23:00 Time On Btm: 2012.10.04 @ 07:34:00
 Time Off Btm: 2012.10.04 @ 10:50:30

TEST COMMENT: 1st Open 15 minutes Fair building blow blew bottom bucket 4 minutes
 1st Shut in 45 minutes Yes blow back
 2nd Open 45 minutes Fair building blow blew bottom bucket in 8 minutes.
 2nd Shut in 90 minutes Yes blow back



PRESSURE SUMMARY			
Time (Min.)	Pressure (psia)	Temp (deg F)	Annotation
0	1692.15	103.86	Initial Hydro-static
1	102.62	103.69	Open To Flow (1)
14	200.42	103.13	Shut-In(1)
62	1064.29	106.43	End Shut-In(1)
63	212.23	106.50	Open To Flow (2)
104	316.57	108.93	Shut-In(2)
196	835.62	111.33	End Shut-In(2)
197	1674.08	110.23	Final Hydro-static

Recovery		
Length (ft)	Description	Volume (bbl)
516.00	Clean oil Oil 99% Mud 1%	5.27
186.00	Oil cut gassy mud	2.61
0.00	Gas 10% Oil 75% Mud 15%	0.00
0.00	Gravity of oil 39 corrected	0.00

Gas Rates			
	Choke (inches)	Pressure (psia)	Gas Rate (Mcf/d)



DRILL STEM TEST REPORT

Shelby Resources
 2717 Canal Blvd. Hays Kansas 67601
 ATTN: Charlie Sturdavant

16-19s-12w-Barton
Penny 1-16
 Job Ticket: 17852 **DST#: 3**
 Test Start: 2012.10.04 @ 05:40:00

GENERAL INFORMATION:

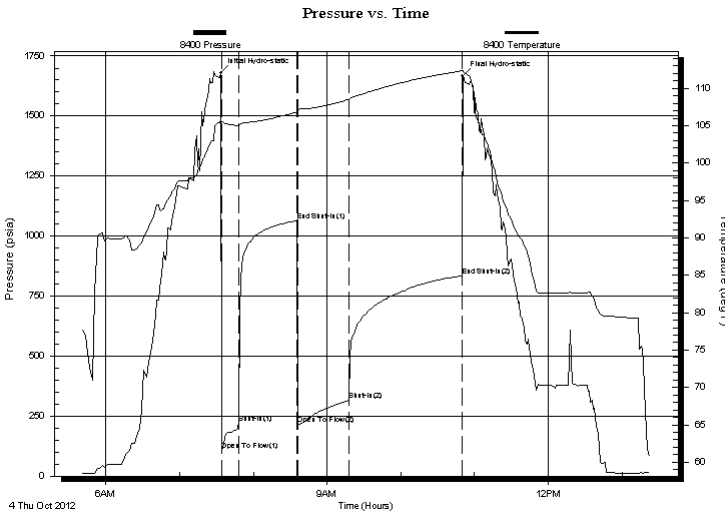
Formation: **Arbuckle**
 Deviated: No Whipstock: ft (KB)
 Test Type: Conventional Bottom Hole (Initial)
 Time Tool Opened: 07:34:30
 Tester: Dustin Ellis
 Time Test Ended: 13:23:00
 Unit No: 3315-Great Bend-25
 Interval: **3408.00 ft (KB) To 3460.00 ft (KB) (TVD)**
 Reference Elevations: 1883.00 ft (KB)
 Total Depth: 3460.00 ft (KB) (TVD) 1874.00 ft (CF)
 Hole Diameter: 7.88 inches Hole Condition: Fair KB to GR/CF: 9.00 ft

Serial #: 8400 Outside

Press @ RunDepth: 834.93 psia @ 3457.72 ft (KB) Capacity: psia
 Start Date: 2012.10.04 End Date: 2012.10.04 Last Calib.: 1899.12.30
 Start Time: 05:40:00 End Time: 13:22:30 Time On Btm: 2012.10.04 @ 07:33:30
 Time Off Btm: 2012.10.04 @ 10:50:30

TEST COMMENT: 1st Open 15 minutes Fair building blow blew bottom bucket 4 minutes
 1st Shut in 45 minutes Yes blow back
 2nd Open 45 minutes Fair building blow blew bottom bucket in 8 minutes.
 2nd Shut in 90 minutes Yes blow back

PRESSURE SUMMARY



Time (Min.)	Pressure (psia)	Temp (deg F)	Annotation
0	1680.48	105.85	Initial Hydro-static
1	109.07	105.57	Open To Flow (1)
15	222.33	105.03	Shut-In(1)
62	1063.20	106.80	End Shut-In(1)
63	216.23	106.58	Open To Flow (2)
104	315.38	108.50	Shut-In(2)
196	834.93	112.32	End Shut-In(2)
197	1666.46	112.38	Final Hydro-static

Recovery

Length (ft)	Description	Volume (bbl)
516.00	Clean oil Oil 99% Mud 1%	5.27
186.00	Oil cut gassy mud	2.61
0.00	Gas 10% Oil 75% Mud 15%	0.00
0.00	Gravity of oil 39 corrected	0.00

Gas Rates

	Choke (inches)	Pressure (psia)	Gas Rate (Mcf/d)



DRILL STEM TEST REPORT

TOOL DIAGRAM

Shelby Resources
 2717 Canal Blvd. Hays Kansas 67601
 ATTN: Charlie Sturdavant

16-19s-12w-Barton
Penny 1-16
 Job Ticket: 17852 **DST#: 3**
 Test Start: 2012.10.04 @ 05:40:00

Tool Information

Drill Pipe:	Length: 3199.00 ft	Diameter: 3.80 inches	Volume: 44.87 bbl	Tool Weight:	2000.00 lb
Heavy Wt. Pipe:	Length: 0.00 ft	Diameter: 0.00 inches	Volume: 0.00 bbl	Weight set on Packer:	20000.00 lb
Drill Collar:	Length: 216.25 ft	Diameter: 2.25 inches	Volume: 1.06 bbl	Weight to Pull Loose:	65000.00 lb
			<u>Total Volume: 45.93 bbl</u>	Tool Chased	0.00 ft
Drill Pipe Above KB:	27.25 ft			String Weight: Initial	60000.00 lb
Depth to Top Packer:	3408.00 ft			Final	64000.00 lb
Depth to Bottom Packer:	ft				
Interval between Packers:	52.72 ft				
Tool Length:	72.72 ft				
Number of Packers:	2	Diameter: 6.75 inches			
Tool Comments:					

Tool Description	Length (ft)	Serial No.	Position	Depth (ft)	Accum. Lengths
Shut-In Tool	5.00			3393.00	
Hydraulic Tool	5.00			3398.00	
Packer	5.00			3403.00	20.00 Bottom Of Top Packer
Packer	5.00			3408.00	
Anchor	5.00			3413.00	
Change Over Sub	0.75			3413.75	
Drill Pipe	30.22			3443.97	
Change Over Sub	0.75			3444.72	
Anchor	11.00			3455.72	
Recorder	1.00	6663	Inside	3456.72	
Recorder	1.00	8400	Outside	3457.72	
Bull Plug	3.00			3460.72	52.72 Bottom Packers & Anchor

Total Tool Length: 72.72



DRILL STEM TEST REPORT

FLUID SUMMARY

Shelby Resources
 2717 Canal Blvd. Hays Kansas 67601
 ATTN: Charlie Sturdavant

16-19s-12w-Barton
Penny 1-16
 Job Ticket: 17852 **DST#: 3**
 Test Start: 2012.10.04 @ 05:40:00

Mud and Cushion Information

Mud Type: Gel Chem	Cushion Type:	Oil API:	deg API
Mud Weight: 9.00 lb/gal	Cushion Length: ft	Water Salinity:	ppm
Viscosity: 48.00 sec/qt	Cushion Volume: bbl		
Water Loss: 8.80 in ³	Gas Cushion Type:		
Resistivity: ohm.m	Gas Cushion Pressure: psia		
Salinity: 14600.00 ppm			
Filter Cake: 1.00 inches			

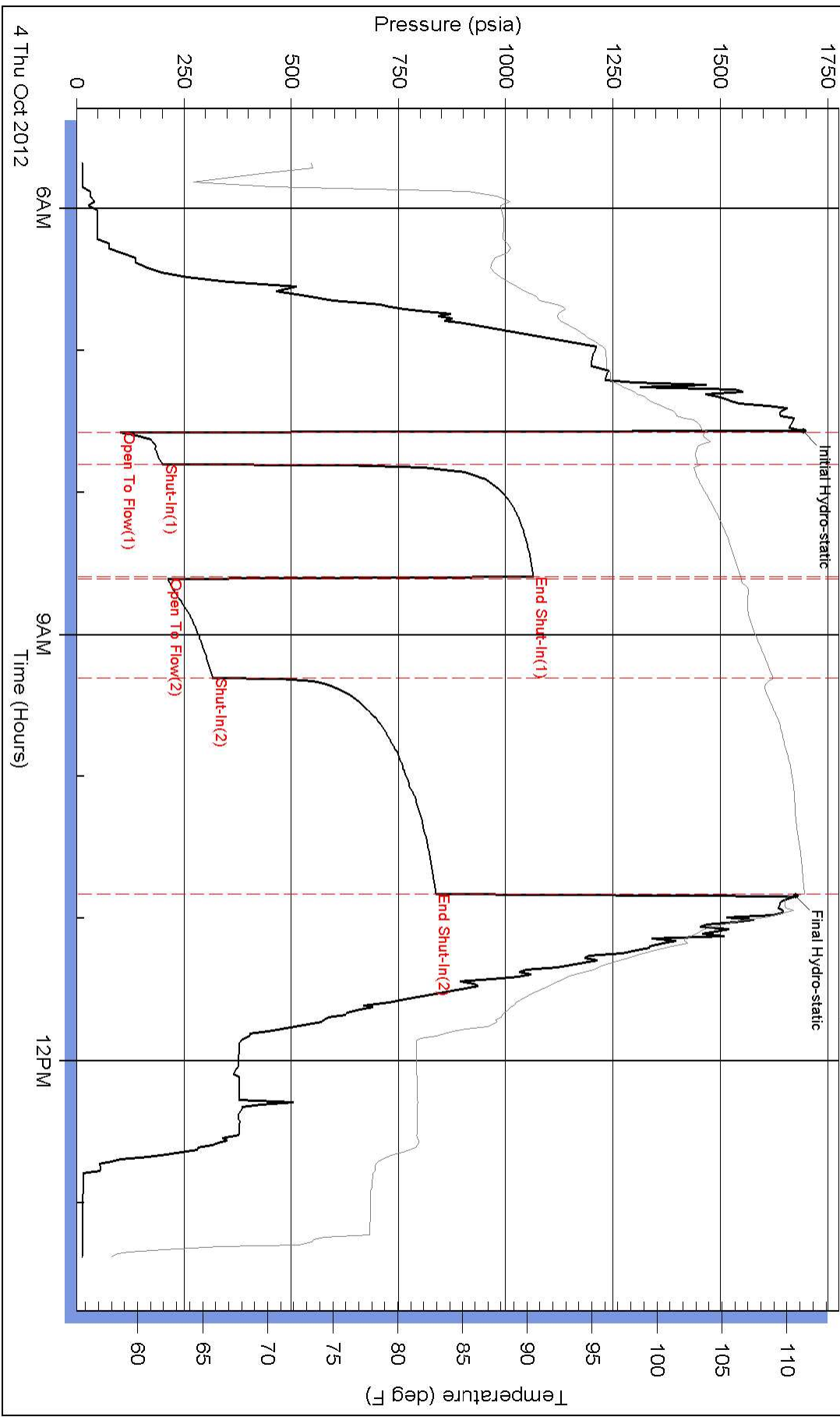
Recovery Information

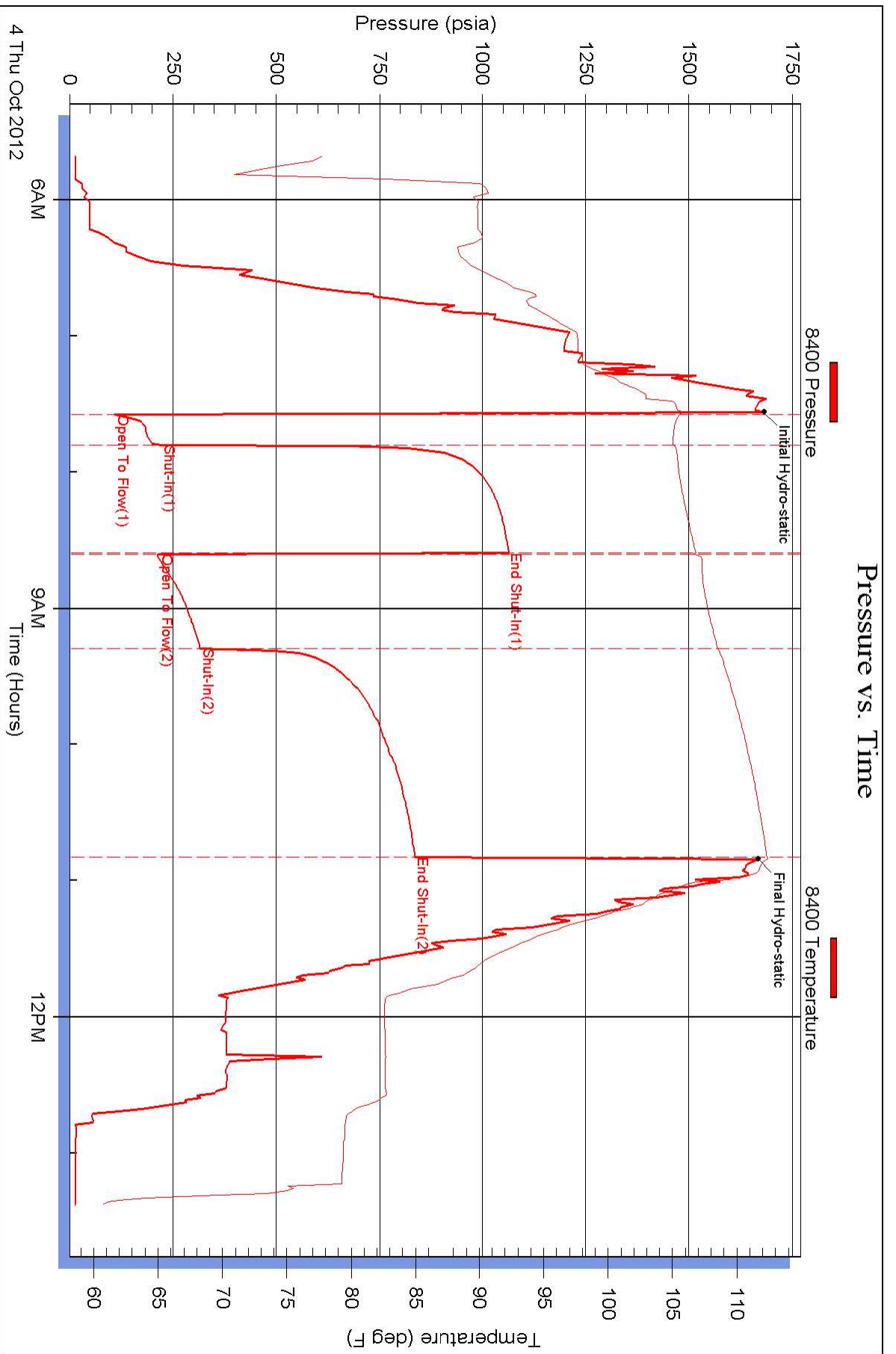
Recovery Table

Length ft	Description	Volume bbl
516.00	Clean oil Oil 99% Mud 1%	5.268
186.00	Oil cut gassy mud	2.609
0.00	Gas 10% Oil 75% Mud 15%	0.000
0.00	Gravity of oil 39 corrected	0.000

Total Length: 702.00 ft Total Volume: 7.877 bbl
 Num Fluid Samples: 0 Num Gas Bombs: 0 Serial #:
 Laboratory Name: Laboratory Location:
 Recovery Comments:

Pressure vs. Time







DRILL STEM TEST REPORT

Prepared For: **Shelby Resources**

2717 Canal Blvd. Hays Kansas 67601

ATTN: Charlie Sturdavant

Penny 1-16

16-19s-12w-Barton

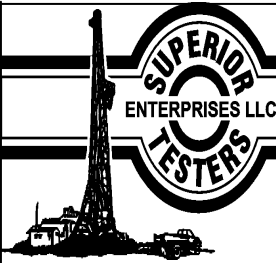
Start Date: 2012.10.05 @ 09:00:00

End Date: 2012.10.05 @ 16:14:00

Job Ticket #: 17853 DST #: 4

Superior Testers Enterprises LLC
PO Box 138 Great Bend KS 67530
1-800-792-6902

Printed: 2012.10.05 @ 14:24:08



DRILL STEM TEST REPORT

Shelby Resources
 2717 Canal Blvd. Hays Kansas 67601
 ATTN: Charlie Sturdavant

16-19s-12w-Barton
Penny 1-16
 Job Ticket: 17853 **DST#: 4**
 Test Start: 2012.10.05 @ 09:00:00

GENERAL INFORMATION:

Formation: **Arbuckle**
 Deviated: No Whipstock: ft (KB)
 Time Tool Opened: 10:28:30
 Time Test Ended: 16:14:00

Test Type: Conventional Bottom Hole (Initial)
 Tester: Dustin Ellis
 Unit No: 3315-Great Bend-25

Interval: 3454.00 ft (KB) To 3465.00 ft (KB) (TVD)
 Total Depth: 3465.00 ft (KB) (TVD)
 Hole Diameter: 7.88 inches Hole Condition: Fair

Reference Elevations: 1883.00 ft (KB)
 1874.00 ft (CF)
 KB to GR/CF: 9.00 ft

Serial #: 6663

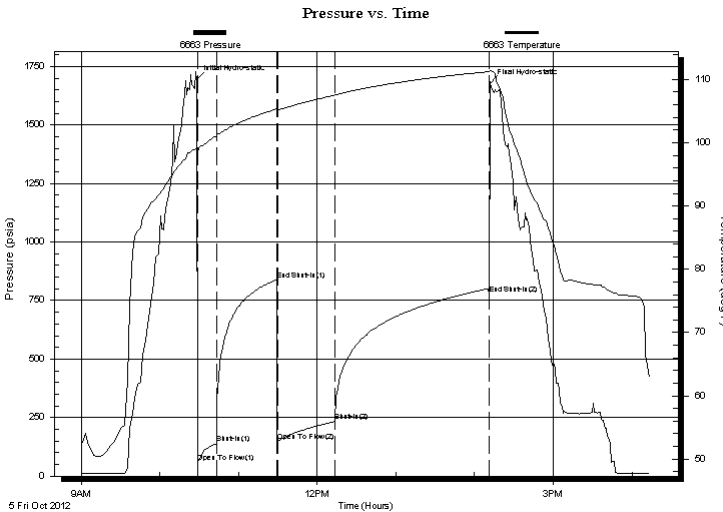
Inside

Press @ Run Depth: 234.47 psia @ 3461.00 ft (KB)
 Start Date: 2012.10.05 End Date: 2012.10.05
 Start Time: 09:00:00 End Time: 16:14:00

Capacity: 5000.00 psia
 Last Calib.: 2012.10.05
 Time On Btm: 2012.10.05 @ 10:28:00
 Time Off Btm: 2012.10.05 @ 14:12:00

TEST COMMENT: 1st Open 15 minutes Fair building blow reached bottom bucket 10 minutes.
 1st Shut in 45 minutes No blow back
 2nd Open 45 minutes Fair building blow blew bottom bucket 10 minutes.
 2nd Shut in 120 minutes Yes blow back

PRESSURE SUMMARY



Time (Min.)	Pressure (psia)	Temp (deg F)	Annotation
0	1695.39	99.10	Initial Hydro-static
1	57.98	98.43	Open To Flow (1)
15	138.96	101.08	Shut-In(1)
61	839.21	105.35	End Shut-In(1)
63	149.96	105.22	Open To Flow (2)
106	234.47	107.54	Shut-In(2)
223	779.73	111.24	End Shut-In(2)
224	1678.42	111.44	Final Hydro-static

Recovery

Length (ft)	Description	Volume (bbl)
392.00	Free oil 1005	3.53
124.00	Oil cut mud Oil 90% Mud 10%	1.74
0.00	Gravity of oil 36 corrected	0.00

Gas Rates

Choke (inches)	Pressure (psia)	Gas Rate (Mcf/d)



DRILL STEM TEST REPORT

Shelby Resources
 2717 Canal Blvd. Hays Kansas 67601
 ATTN: Charlie Sturdavant

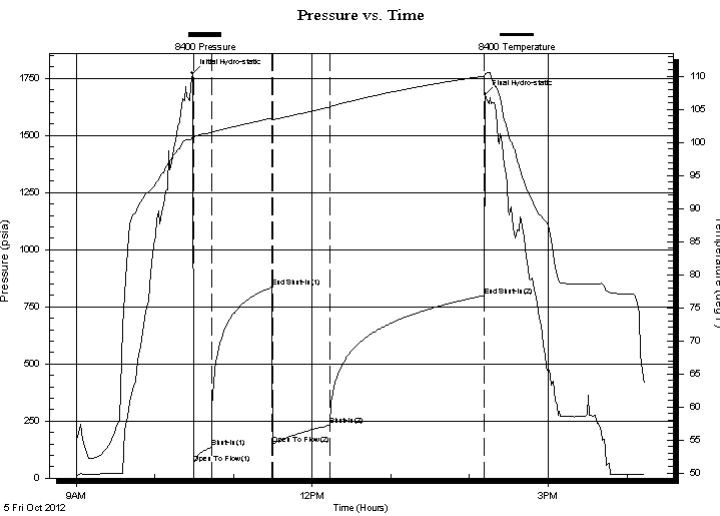
16-19s-12w-Barton
Penny 1-16
 Job Ticket: 17853 **DST#: 4**
 Test Start: 2012.10.05 @ 09:00:00

GENERAL INFORMATION:

Formation: **Arbuckle**
 Deviated: No Whipstock: ft (KB)
 Time Tool Opened: 10:28:30
 Time Test Ended: 16:14:00
 Interval: **3454.00 ft (KB) To 3465.00 ft (KB) (TVD)**
 Total Depth: 3465.00 ft (KB) (TVD)
 Hole Diameter: 7.88 inches Hole Condition: Fair
 Test Type: Conventional Bottom Hole (Initial)
 Tester: Dustin Ellis
 Unit No: 3315-Great Bend-25
 Reference Elevations: 1883.00 ft (KB)
 1874.00 ft (CF)
 KB to GR/CF: 9.00 ft

Serial #: 8400 Outside
 Press @ RunDepth: 799.25 psia @ 3462.00 ft (KB) Capacity: 5000.00 psia
 Start Date: 2012.10.05 End Date: 2012.10.05 Last Calib.: 2012.10.05
 Start Time: 09:00:00 End Time: 16:14:00 Time On Btm: 2012.10.05 @ 10:28:30
 Time Off Btm: 2012.10.05 @ 14:12:00

TEST COMMENT: 1st Open 15 minutes Fair building blow reached bottom bucket 10 minutes.
 1st Shut in 45 minutes No blow back
 2nd Open 45 minutes Fair building blow blew bottom bucket 10 minutes.
 2nd Shut in 120 minutes Yes blow back



PRESSURE SUMMARY

Time (Min.)	Pressure (psia)	Temp (deg F)	Annotation
0	1772.44	100.91	Initial Hydro-static
1	64.85	100.61	Open To Flow (1)
15	135.83	101.47	Shut-In(1)
61	836.07	103.69	End Shut-In(1)
62	149.72	103.47	Open To Flow (2)
105	231.72	105.36	Shut-In(2)
223	799.25	110.03	End Shut-In(2)
224	1680.41	110.38	Final Hydro-static

Recovery

Length (ft)	Description	Volume (bbl)
392.00	Free oil 1005	3.53
124.00	Oil cut mud Oil 90% Mud 10%	1.74
0.00	Gravity of oil 36 corrected	0.00

Gas Rates

	Choke (inches)	Pressure (psia)	Gas Rate (Mcf/d)



DRILL STEM TEST REPORT

TOOL DIAGRAM

Shelby Resources
 2717 Canal Blvd. Hays Kansas 67601
 ATTN: Charlie Sturdavant

16-19s-12w-Barton
Penny 1-16
 Job Ticket: 17853 **DST#: 4**
 Test Start: 2012.10.05 @ 09:00:00

Tool Information

Drill Pipe:	Length: 3219.00 ft	Diameter: 3.80 inches	Volume: 45.15 bbl	Tool Weight: 2000.00 lb
Heavy Wt. Pipe:	Length: 0.00 ft	Diameter: 0.00 inches	Volume: 0.00 bbl	Weight set on Packer: 20000.00 lb
Drill Collar:	Length: 216.25 ft	Diameter: 2.25 inches	Volume: 1.06 bbl	Weight to Pull Loose: 65000.00 lb
			<u>Total Volume: 46.21 bbl</u>	Tool Chased 0.00 ft
Drill Pipe Above KB:	9.25 ft			String Weight: Initial 60000.00 lb
Depth to Top Packer:	3454.00 ft			Final 62000.00 lb
Depth to Bottom Packer:	ft			
Interval between Packers:	11.00 ft			
Tool Length:	39.00 ft			
Number of Packers:	2	Diameter: 6.75 inches		

Tool Comments:

Tool Description	Length (ft)	Serial No.	Position	Depth (ft)	Accum. Lengths
Shut-In Tool	5.00			3431.00	
Hydraulic Tool	5.00			3436.00	
Jars	6.00			3442.00	
Safety Joint	2.00			3444.00	
Packer	5.00			3449.00	28.00 Bottom Of Top Packer
Packer	5.00			3454.00	
Anchor	6.00			3460.00	
Recorder	1.00	6663	Inside	3461.00	
Recorder	1.00	8400	Outside	3462.00	
Bull Plug	3.00			3465.00	11.00 Bottom Packers & Anchor
Total Tool Length:	39.00				



DRILL STEM TEST REPORT

FLUID SUMMARY

Shelby Resources
 2717 Canal Blvd. Hays Kansas 67601
 ATTN: Charlie Sturdavant

16-19s-12w-Barton
Penny 1-16
 Job Ticket: 17853 **DST#: 4**
 Test Start: 2012.10.05 @ 09:00:00

Mud and Cushion Information

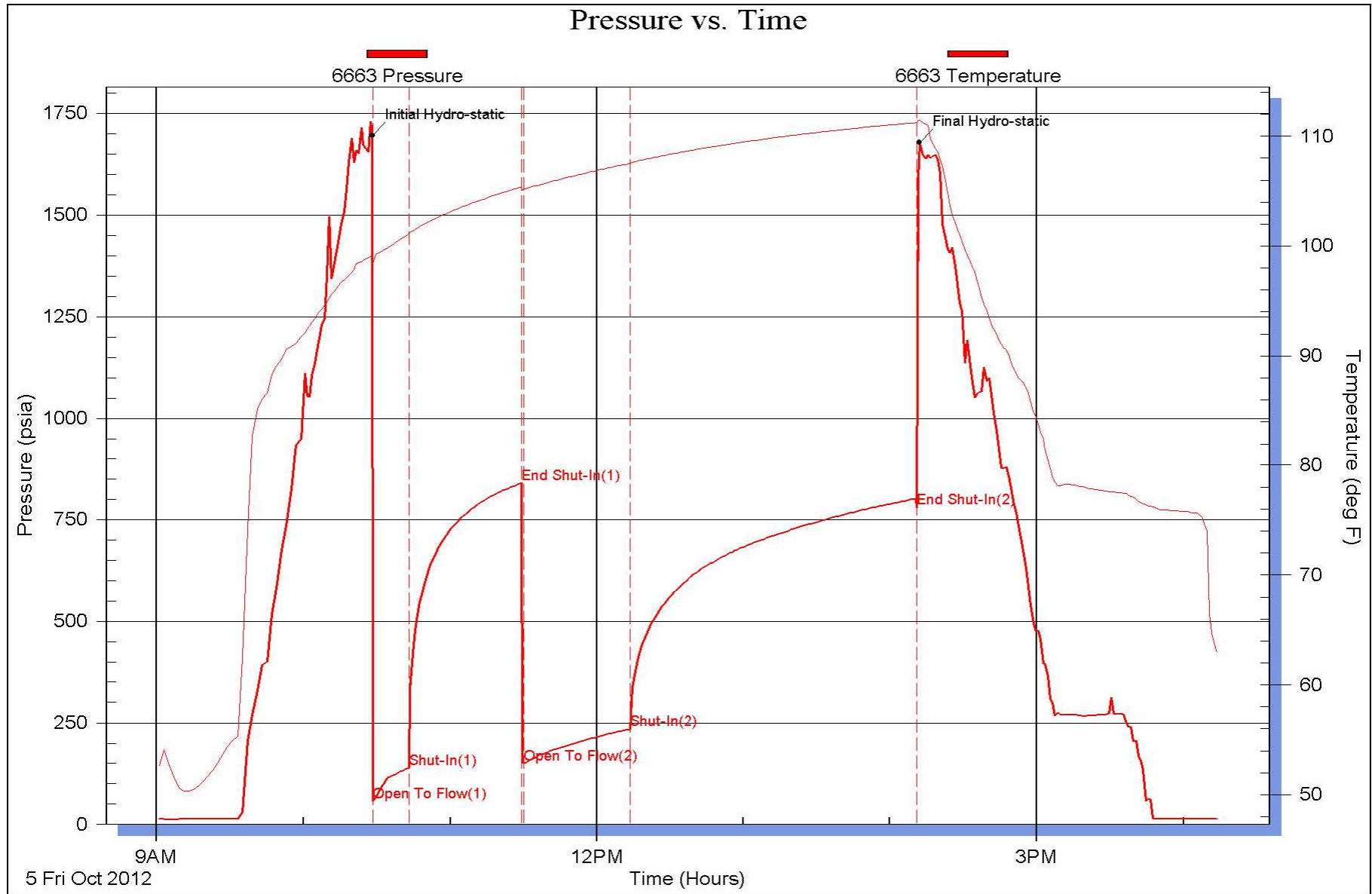
Mud Type: Gel Chem	Cushion Type:	Oil API:	deg API
Mud Weight: 9.00 lb/gal	Cushion Length: ft	Water Salinity:	ppm
Viscosity: 56.00 sec/qt	Cushion Volume: bbl		
Water Loss: 6.80 in ³	Gas Cushion Type:		
Resistivity: ohm.m	Gas Cushion Pressure: psia		
Salinity: 5800.00 ppm			
Filter Cake: 1.00 inches			

Recovery Information

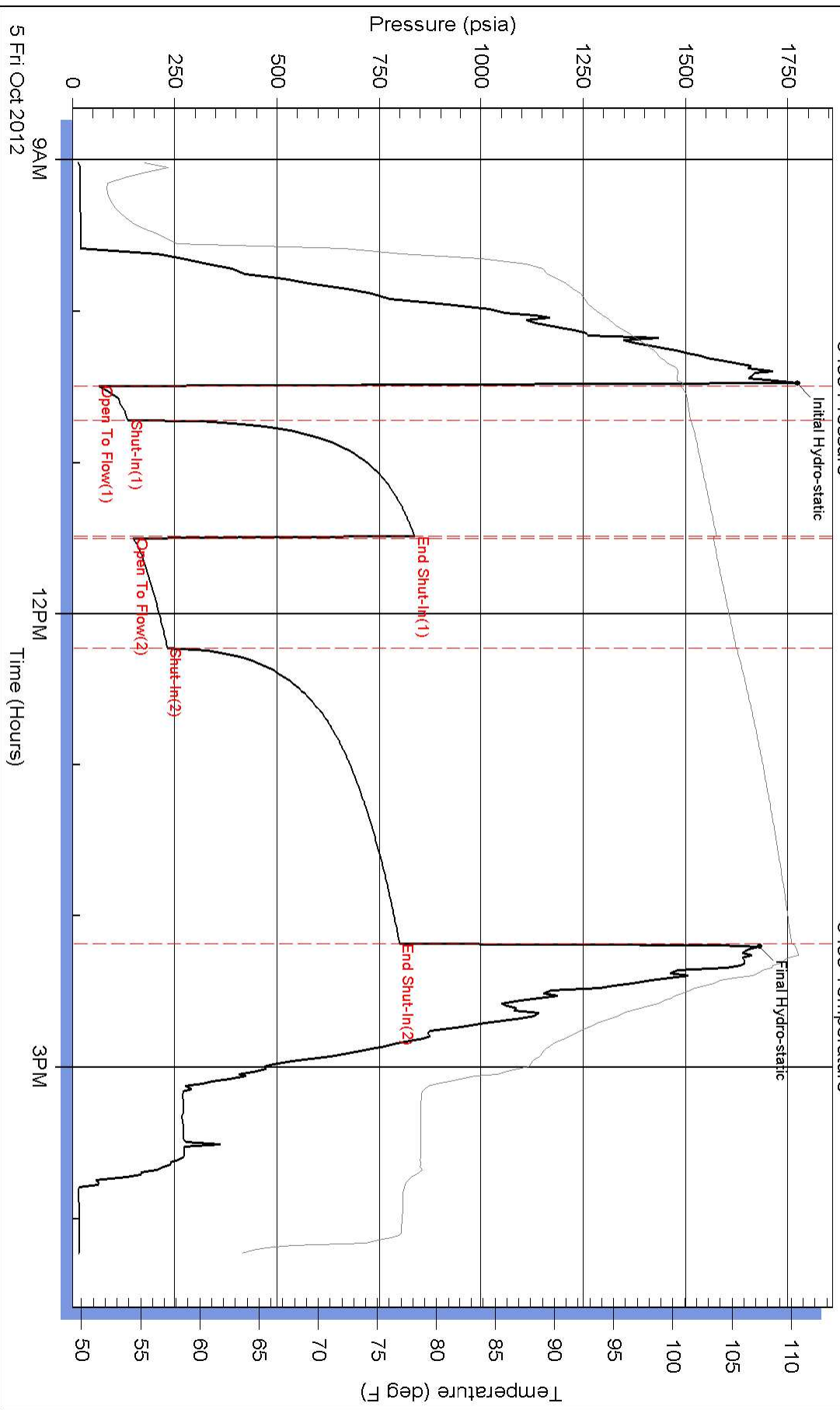
Recovery Table

Length ft	Description	Volume bbl
392.00	Free oil 1005	3.529
124.00	Oil cut mud Oil 90% Mud 10%	1.739
0.00	Gravity of oil 36 corrected	0.000

Total Length: 516.00 ft Total Volume: 5.268 bbl
 Num Fluid Samples: 0 Num Gas Bombs: 0 Serial #:
 Laboratory Name: Laboratory Location:
 Recovery Comments:



Pressure vs. Time





DRILL STEM TEST REPORT

Prepared For: **Shelby Resources**

2717 Canal Blvd. Hays Kansas 67601

ATTN: Charlie Sturdavant

Penny 1-16

16-19s-12w-Barton

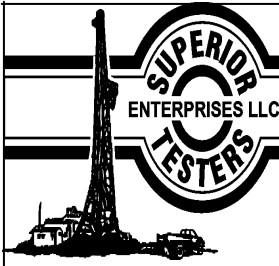
Start Date: 2012.10.05 @ 11:15:00

End Date: 2012.10.05 @ 19:12:00

Job Ticket #: 17854 DST #: 5

Superior Testers Enterprises LLC
PO Box 138 Great Bend KS 67530
1-800-792-6902

Printed: 2012.10.06 @ 05:28:19



DRILL STEM TEST REPORT

Shelby Resources
 2717 Canal Blvd. Hays Kansas 67601
 ATTN: Charlie Sturdavant

16-19s-12w-Barton
Penny 1-16
 Job Ticket: 17854 **DST#: 5**
 Test Start: 2012.10.05 @ 11:15:00

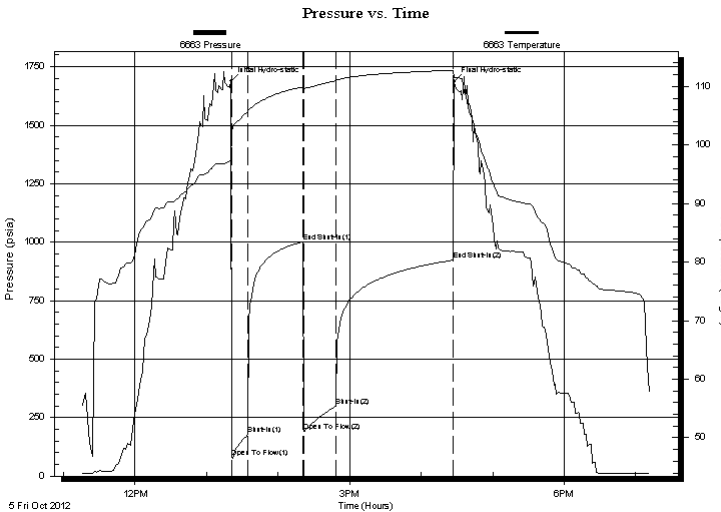
GENERAL INFORMATION:

Formation: **Arbuckle**
 Deviated: No Whipstock: ft (KB)
 Time Tool Opened: 13:21:00
 Time Test Ended: 19:12:00
Interval: 3465.00 ft (KB) To 4370.00 ft (KB) (TVD)
 Total Depth: 4370.00 ft (KB) (TVD)
 Hole Diameter: 7.88 inches Hole Condition: Fair
 Test Type: Conventional Bottom Hole (Initial)
 Tester: Dustin Ellis
 Unit No: 3315 Great Bend-25
 Reference Elevations: 1883.00 ft (KB)
 1874.00 ft (CF)
 KB to GR/CF: 9.00 ft

Serial #: 6663 Inside
 Press @ Run Depth: 300.18 psia @ 3466.00 ft (KB) Capacity: 5000.00 psia
 Start Date: 2012.10.05 End Date: 2012.10.05 Last Calib.: 2012.10.06
 Start Time: 11:15:00 End Time: 19:12:00 Time On Btm: 2012.10.05 @ 13:20:30
 Time Off Btm: 2012.10.05 @ 16:27:30

TEST COMMENT: 1st Open 15 minutes Fair building blow blew bottom bucket 6 minutes
 1st Shut in 45 minutes No blow back
 2nd Open 30 minutes Fair building blow blew bottom bucket 6 minutes
 2nd Shut in 90 minutes No blow back

PRESSURE SUMMARY



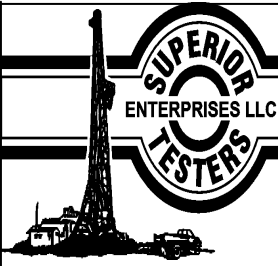
Time (Min.)	Pressure (psia)	Temp (deg F)	Annotation
0	1687.44	97.41	Initial Hydro-static
1	80.35	101.92	Open To Flow (1)
14	177.05	105.65	Shut-In (1)
61	1001.97	109.92	End Shut-In (1)
61	190.06	109.71	Open To Flow (2)
88	300.18	110.98	Shut-In (2)
187	922.87	112.73	End Shut-In (2)
187	1686.30	111.51	Final Hydro-static

Recovery

Gas Rates

Length (ft)	Description	Volume (bbl)
558.00	Clean free oil 100%	5.86
124.00	Oil cut mud 90% Oil Mud 10%	1.74
0.00	Gravity of oil 37 corrected	0.00

	Choke (inches)	Pressure (psia)	Gas Rate (Mcf/d)



DRILL STEM TEST REPORT

Shelby Resources

16-19s-12w-Barton

2717 Canal Blvd. Hays Kansas 67601

Penny 1-16

Job Ticket: 17854

DST#: 5

ATTN: Charlie Sturdavant

Test Start: 2012.10.05 @ 11:15:00

GENERAL INFORMATION:

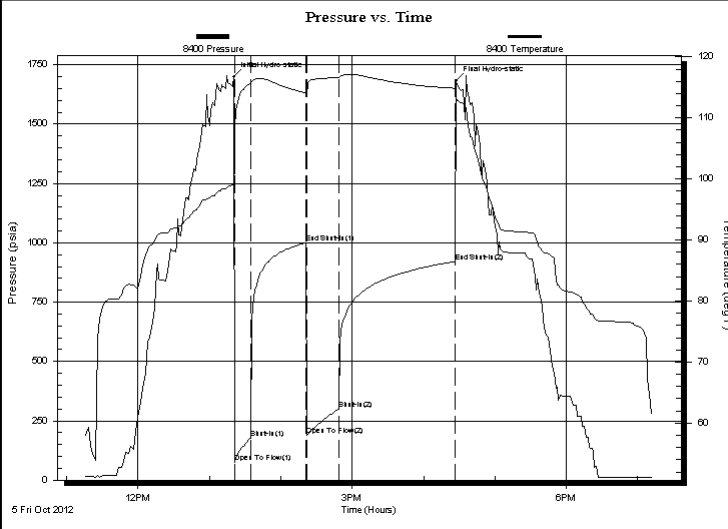
Formation: **Arbuckle**
 Deviated: No Whipstock: ft (KB)
 Time Tool Opened: 13:21:00
 Time Test Ended: 19:12:00
Interval: 3465.00 ft (KB) To 4370.00 ft (KB) (TVD)
 Total Depth: 4370.00 ft (KB) (TVD)
 Hole Diameter: 7.88 inches Hole Condition: Fair

Test Type: Conventional Bottom Hole (Initial)
 Tester: Dustin Ellis
 Unit No: 3315 Great Bend-25
 Reference Elevations: 1883.00 ft (KB)
 1874.00 ft (CF)
 KB to GR/CF: 9.00 ft

Serial #: 8400 Outside
 Press @RunDepth: 920.70 psia @ 3467.00 ft (KB)
 Start Date: 2012.10.05 End Date: 2012.10.05
 Start Time: 11:15:00 End Time: 19:12:30

Capacity: 5000.00 psia
 Last Calib.: 2012.10.06
 Time On Btm: 2012.10.05 @ 13:20:30
 Time Off Btm: 2012.10.05 @ 16:27:30

TEST COMMENT: 1st Open 15 minutes Fair building blow blew bottom bucket 6 minutes
 1st Shut in 45 minutes No blow back
 2nd Open 30 minutes Fair building blow blew bottom bucket 6 minutes
 2nd Shut in 90 minutes No blow back



PRESSURE SUMMARY			
Time (Min.)	Pressure (psia)	Temp (deg F)	Annotation
0	1699.86	99.16	Initial Hydro-static
1	73.75	102.21	Open To Flow (1)
14	175.78	115.62	Shut-In(1)
61	999.76	114.11	End Shut-In(1)
61	187.44	113.75	Open To Flow (2)
88	298.94	116.57	Shut-In(2)
186	920.70	114.86	End Shut-In(2)
187	1682.76	113.28	Final Hydro-static

Recovery		
Length (ft)	Description	Volume (bbl)
558.00	Clean free oil 100%	5.86
124.00	Oil cut mud 90%Oil Mud10%	1.74
0.00	Gravity of oil 37 corrected	0.00

Gas Rates			
	Choke (inches)	Pressure (psia)	Gas Rate (Mcf/d)



DRILL STEM TEST REPORT

TOOL DIAGRAM

Shelby Resources
 2717 Canal Blvd. Hays Kansas 67601
 ATTN: Charlie Sturdavant

16-19s-12w-Barton
Penny 1-16
 Job Ticket: 17854 **DST#: 5**
 Test Start: 2012.10.05 @ 11:15:00

Tool Information

Drill Pipe:	Length: 3243.00 ft	Diameter: 3.80 inches	Volume: 45.49 bbl	Tool Weight: 2000.00 lb
Heavy Wt. Pipe:	Length: 0.00 ft	Diameter: 0.00 inches	Volume: 0.00 bbl	Weight set on Packer: 20000.00 lb
Drill Collar:	Length: 216.25 ft	Diameter: 2.25 inches	Volume: 1.06 bbl	Weight to Pull Loose: 75000.00 lb
			<u>Total Volume: 46.55 bbl</u>	Tool Chased 0.00 ft
Drill Pipe Above KB:	22.25 ft			String Weight: Initial 61000.00 lb
Depth to Top Packer:	3465.00 ft			Final 62000.00 lb
Depth to Bottom Packer:	ft			
Interval between Packers:	5.00 ft			
Tool Length:	33.00 ft			
Number of Packers:	2	Diameter: 6.75 inches		

Tool Comments:

Tool Description	Length (ft)	Serial No.	Position	Depth (ft)	Accum. Lengths
Shut-In Tool	5.00			3442.00	
Hydraulic Tool	5.00			3447.00	
Jars	6.00			3453.00	
Safety Joint	2.00			3455.00	
Packer	5.00			3460.00	28.00 Bottom Of Top Packer
Packer	5.00			3465.00	
Anchor	0.00			3465.00	
Recorder	1.00	6663	Inside	3466.00	
Recorder	1.00	8400	Outside	3467.00	
Bull Plug	3.00			3470.00	5.00 Bottom Packers & Anchor
Total Tool Length:	33.00				



DRILL STEM TEST REPORT

FLUID SUMMARY

Shelby Resources
2717 Canal Blvd. Hays Kansas 67601
ATTN: Charlie Sturdavant

16-19s-12w-Barton
Penny 1-16
Job Ticket: 17854 **DST#: 5**
Test Start: 2012.10.05 @ 11:15:00

Mud and Cushion Information

Mud Type:	Gel Chem	Cushion Type:		Oil API:	deg API
Mud Weight:	9.00 lb/gal	Cushion Length:	ft	Water Salinity:	ppm
Viscosity:	49.00 sec/qt	Cushion Volume:	bbbl		
Water Loss:	6.40 in ³	Gas Cushion Type:			
Resistivity:	ohm.m	Gas Cushion Pressure:	psia		
Salinity:	5000.00 ppm				
Filter Cake:	1.00 inches				

Recovery Information

Recovery Table

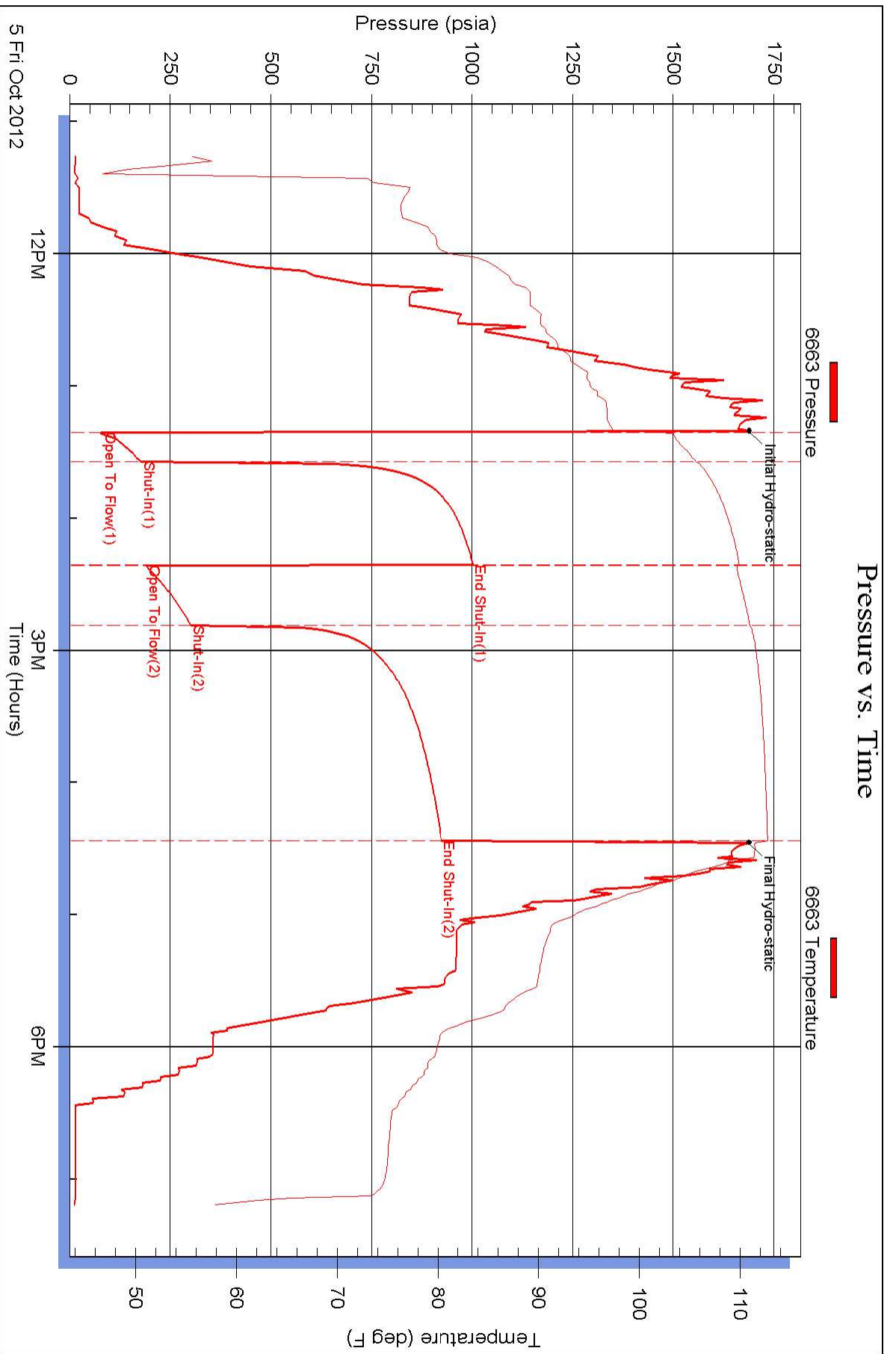
Length ft	Description	Volume bbbl
558.00	Clean free oil 100%	5.857
124.00	Oil cut mud 90%Oil Mud10%	1.739
0.00	Gravity of oil 37 corrected	0.000

Total Length: 682.00 ft Total Volume: 7.596 bbl

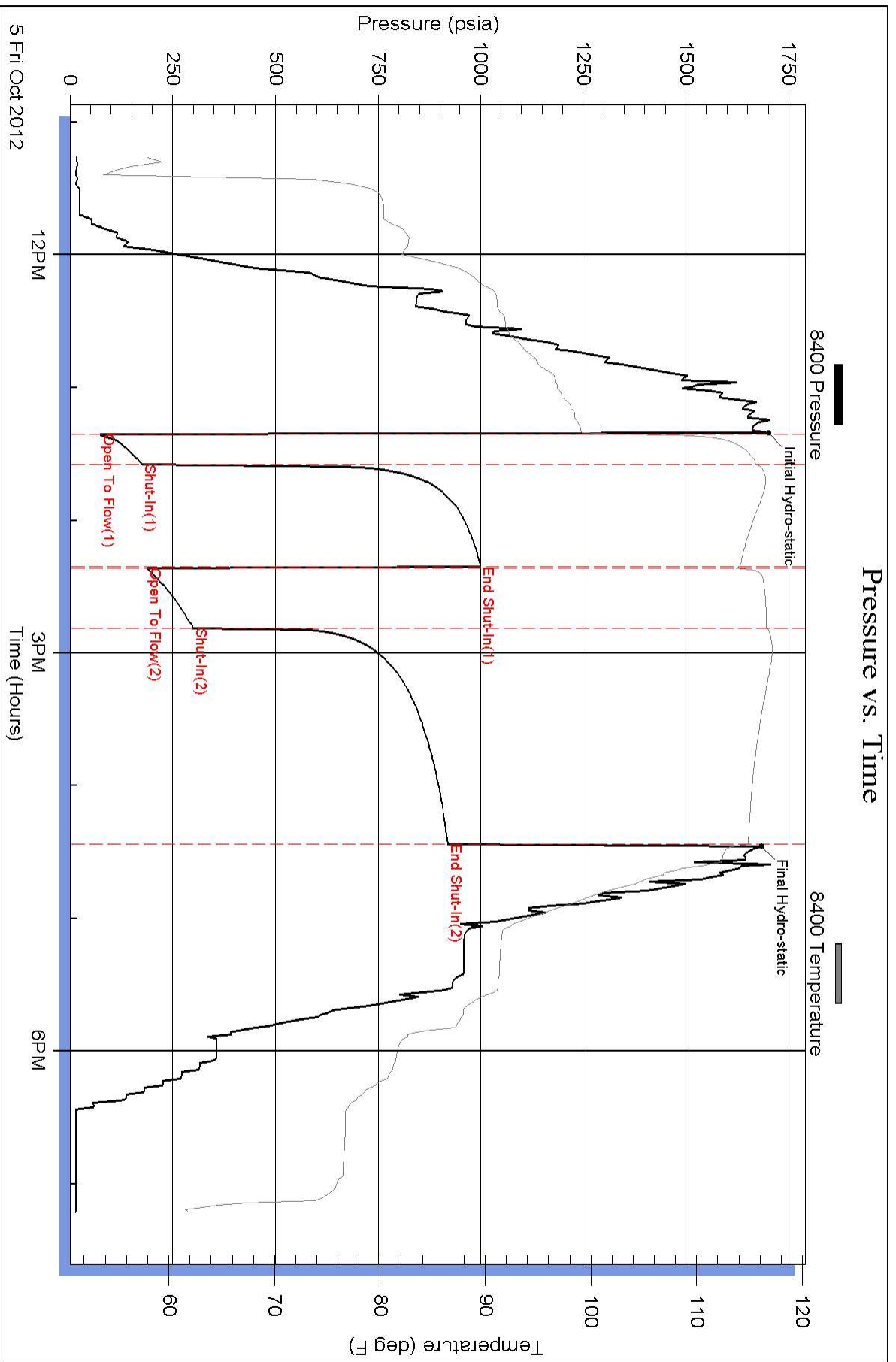
Num Fluid Samples: 0 Num Gas Bombs: 0 Serial #:

Laboratory Name: Laboratory Location:

Recovery Comments:



Pressure vs. Time





DRILL STEM TEST REPORT

Prepared For: **Shelby Resources**

2717 Canal Blvd. Hays Kansas 67601

ATTN: Charlie Sturdavant

Penny 1-16

16-19s-12w-Barton

Start Date: 2012.10.06 @ 02:20:00

End Date: 2012.10.06 @ 08:55:00

Job Ticket #: 17855 DST #: 6

Superior Testers Enterprises LLC
PO Box 138 Great Bend KS 67530
1-800-792-6902

Printed: 2012.10.06 @ 19:18:49



DRILL STEM TEST REPORT

Shelby Resources
 2717 Canal Blvd. Hays Kansas 67601
 ATTN: Charlie Sturdavant

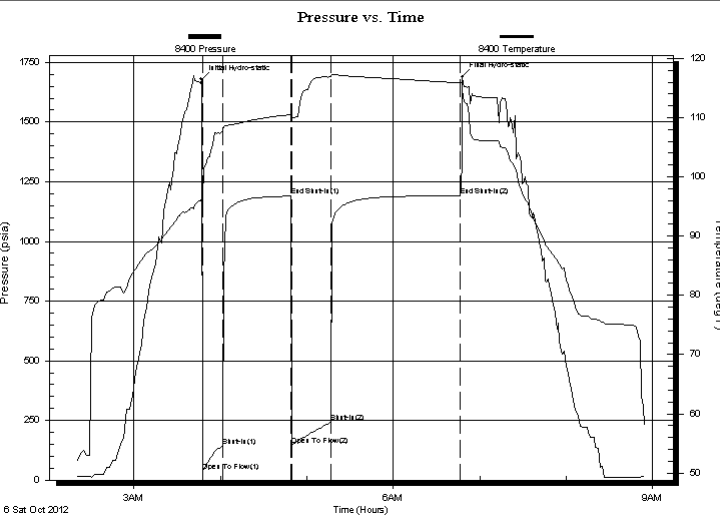
16-19s-12w-Barton
Penny 1-16
 Job Ticket: 17855 **DST#: 6**
 Test Start: 2012.10.06 @ 02:20:00

GENERAL INFORMATION:

Formation: **Arbuckle**
 Deviated: No Whipstock: ft (KB)
 Time Tool Opened: 03:47:30
 Time Test Ended: 08:55:00
Interval: 3470.00 ft (KB) To 3480.00 ft (KB) (TVD)
 Total Depth: 3480.00 ft (KB) (TVD)
 Hole Diameter: 7.88 inches Hole Condition: Fair
 Test Type: Conventional Bottom Hole (Initial)
 Tester: Dustin Ellis
 Unit No: 3315-Great Bend-25
 Reference Elevations: 1883.00 ft (KB)
 1874.00 ft (CF)
 KB to GR/CF: 9.00 ft

Serial #: 8400 Outside
 Press @ RunDepth: 242.00 psia @ 3477.00 ft (KB) Capacity: 5000.00 psia
 Start Date: 2012.10.06 End Date: 2012.10.06 Last Calib.: 2012.10.06
 Start Time: 02:20:00 End Time: 08:55:00 Time On Btm: 2012.10.06 @ 03:47:00
 Time Off Btm: 2012.10.06 @ 06:48:00

TEST COMMENT: 1st Open 15 minutes Fair building blow blew bottom bucket 11 minutes.
 1st Shut in 45 minutes No blow back
 2nd Open 30 minutes Fair building blow blew bottom bucket 13 minutes.
 2nd Shut in 90 minutes No blow back



PRESSURE SUMMARY			
Time (Min.)	Pressure (psia)	Temp (deg F)	Annotation
0	1678.96	96.23	Initial Hydro-static
1	38.59	96.19	Open To Flow (1)
15	143.53	107.88	Shut-In(1)
62	1189.65	110.48	End Shut-In(1)
63	148.02	110.10	Open To Flow (2)
90	242.00	116.99	Shut-In(2)
180	1191.66	115.88	End Shut-In(2)
181	1690.34	114.89	Final Hydro-static

Recovery		
Length (ft)	Description	Volume (bbl)
434.00	Water cut muddy oil	4.12
0.00	Oil 5% Mud 10% Water 85%	0.00
62.00	Mud cut w atery oil	0.87
0.00	Oil 5% Mud 90% Water 5%	0.00
0.00	Chlorides 34,000@76 degrees	0.00

Gas Rates			
	Choke (inches)	Pressure (psia)	Gas Rate (Mcf/d)



DRILL STEM TEST REPORT

Shelby Resources
 2717 Canal Blvd. Hays Kansas 67601
 ATTN: Charlie Sturdavant

16-19s-12w-Barton
Penny 1-16
 Job Ticket: 17855 **DST#: 6**
 Test Start: 2012.10.06 @ 02:20:00

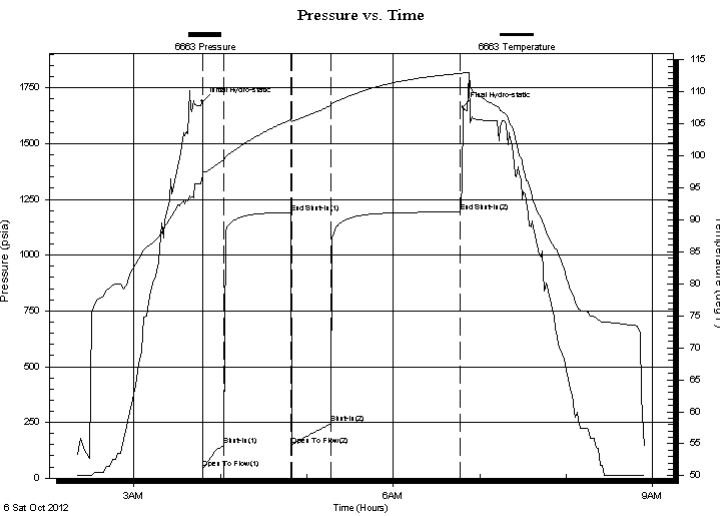
GENERAL INFORMATION:

Formation: **Arbuckle**
 Deviated: No Whipstock: ft (KB)
 Test Type: Conventional Bottom Hole (Initial)
 Time Tool Opened: 03:47:30 Tester: Dustin Ellis
 Time Test Ended: 08:55:00 Unit No: 3315-Great Bend-25
 Interval: **3470.00 ft (KB) To 3480.00 ft (KB) (TVD)** Reference Elevations: 1883.00 ft (KB)
 Total Depth: 3480.00 ft (KB) (TVD) 1874.00 ft (CF)
 Hole Diameter: 7.88 inches Hole Condition: Fair KB to GR/CF: 9.00 ft

Serial #: 6663 Inside

Press @ RunDepth: 1194.04 psia @ 3476.00 ft (KB) Capacity: 5000.00 psia
 Start Date: 2012.10.06 End Date: 2012.10.06 Last Calib.: 2012.10.06
 Start Time: 02:20:00 End Time: 08:54:30 Time On Btm: 2012.10.06 @ 03:47:30
 Time Off Btm: 2012.10.06 @ 06:48:30

TEST COMMENT: 1st Open 15 minutes Fair building blow blew bottom bucket 11 minutes.
 1st Shut in 45 minutes No blow back
 2nd Open 30 minutes Fair building blow blew bottom bucket 13 minutes.
 2nd Shut in 90 minutes No blow back



PRESSURE SUMMARY

Time (Min.)	Pressure (psia)	Temp (deg F)	Annotation
0	1689.34	96.90	Initial Hydro-static
1	43.03	97.36	Open To Flow (1)
15	146.37	99.41	Shut-In(1)
62	1191.81	105.62	End Shut-In(1)
62	149.38	105.39	Open To Flow (2)
90	244.64	107.84	Shut-In(2)
179	1194.04	112.84	End Shut-In(2)
181	1665.52	113.00	Final Hydro-static

Recovery

Length (ft)	Description	Volume (bbl)
434.00	Water cut muddy oil	4.12
0.00	Oil 5% Mud 10% Water 85%	0.00
62.00	Mud cut w atery oil	0.87
0.00	Oil 5% Mud 90% Water 5%	0.00
0.00	Chlorides 34,000@76 degrees	0.00

Gas Rates

Choke (inches)	Pressure (psia)	Gas Rate (Mcf/d)



DRILL STEM TEST REPORT

TOOL DIAGRAM

Shelby Resources
 2717 Canal Blvd. Hays Kansas 67601
 ATTN: Charlie Sturdavant

16-19s-12w-Barton
Penny 1-16
 Job Ticket: 17855 **DST#: 6**
 Test Start: 2012.10.06 @ 02:20:00

Tool Information

Drill Pipe:	Length: 3252.00 ft	Diameter: 3.80 inches	Volume: 45.62 bbl	Tool Weight:	2000.00 lb
Heavy Wt. Pipe:	Length: 0.00 ft	Diameter: 0.00 inches	Volume: 0.00 bbl	Weight set on Packer:	20000.00 lb
Drill Collar:	Length: 216.25 ft	Diameter: 2.25 inches	Volume: 1.06 bbl	Weight to Pull Loose:	80000.00 lb
			<u>Total Volume: 46.68 bbl</u>	Tool Chased	0.00 ft
Drill Pipe Above KB:	26.25 ft			String Weight: Initial	61000.00 lb
Depth to Top Packer:	3470.00 ft			Final	61000.00 lb
Depth to Bottom Packer:	ft				
Interval between Packers:	10.00 ft				
Tool Length:	38.00 ft				
Number of Packers:	2	Diameter: 6.75 inches			

Tool Comments:

Tool Description	Length (ft)	Serial No.	Position	Depth (ft)	Accum. Lengths
Shut-In Tool	5.00			3447.00	
Hydraulic Tool	5.00			3452.00	
Jars	6.00			3458.00	
Safety Joint	2.00			3460.00	
Packer	5.00			3465.00	28.00 Bottom Of Top Packer
Packer	5.00			3470.00	
Anchor	5.00			3475.00	
Recorder	1.00	6663	Inside	3476.00	
Recorder	1.00	8400	Outside	3477.00	
Bull Plug	3.00			3480.00	10.00 Bottom Packers & Anchor
Total Tool Length:	38.00				



DRILL STEM TEST REPORT

FLUID SUMMARY

Shelby Resources
2717 Canal Blvd. Hays Kansas 67601
ATTN: Charlie Sturdavant

16-19s-12w-Barton
Penny 1-16
Job Ticket: 17855 **DST#: 6**
Test Start: 2012.10.06 @ 02:20:00

Mud and Cushion Information

Mud Type: Gel Chem	Cushion Type:	Oil API:	deg API
Mud Weight: 9.00 lb/gal	Cushion Length: ft	Water Salinity:	ppm
Viscosity: 56.00 sec/qt	Cushion Volume: bbl		
Water Loss: 6.80 in ³	Gas Cushion Type:		
Resistivity: 0.20 ohm.m	Gas Cushion Pressure: psia		
Salinity: 5800.00 ppm			
Filter Cake: 1.00 inches			

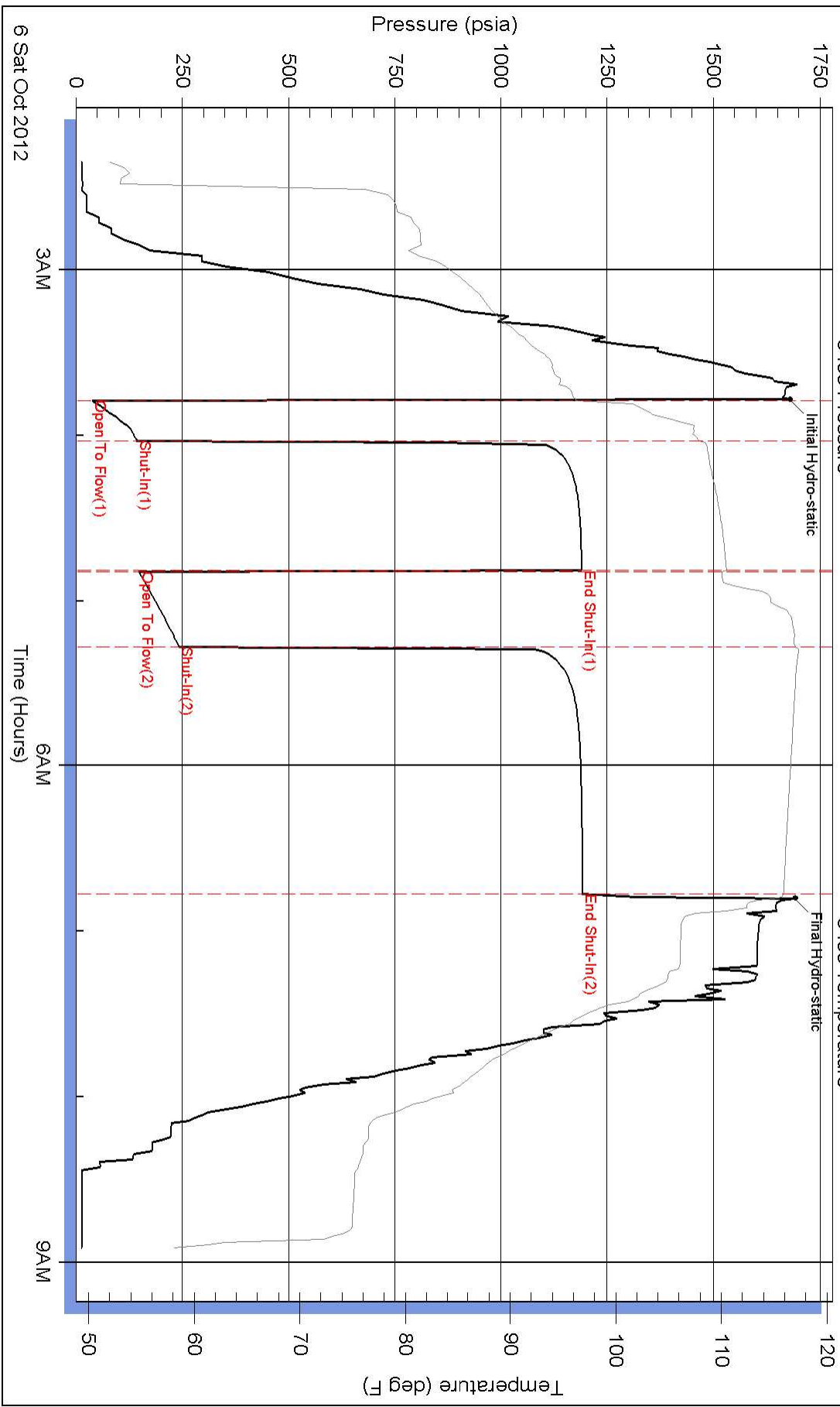
Recovery Information

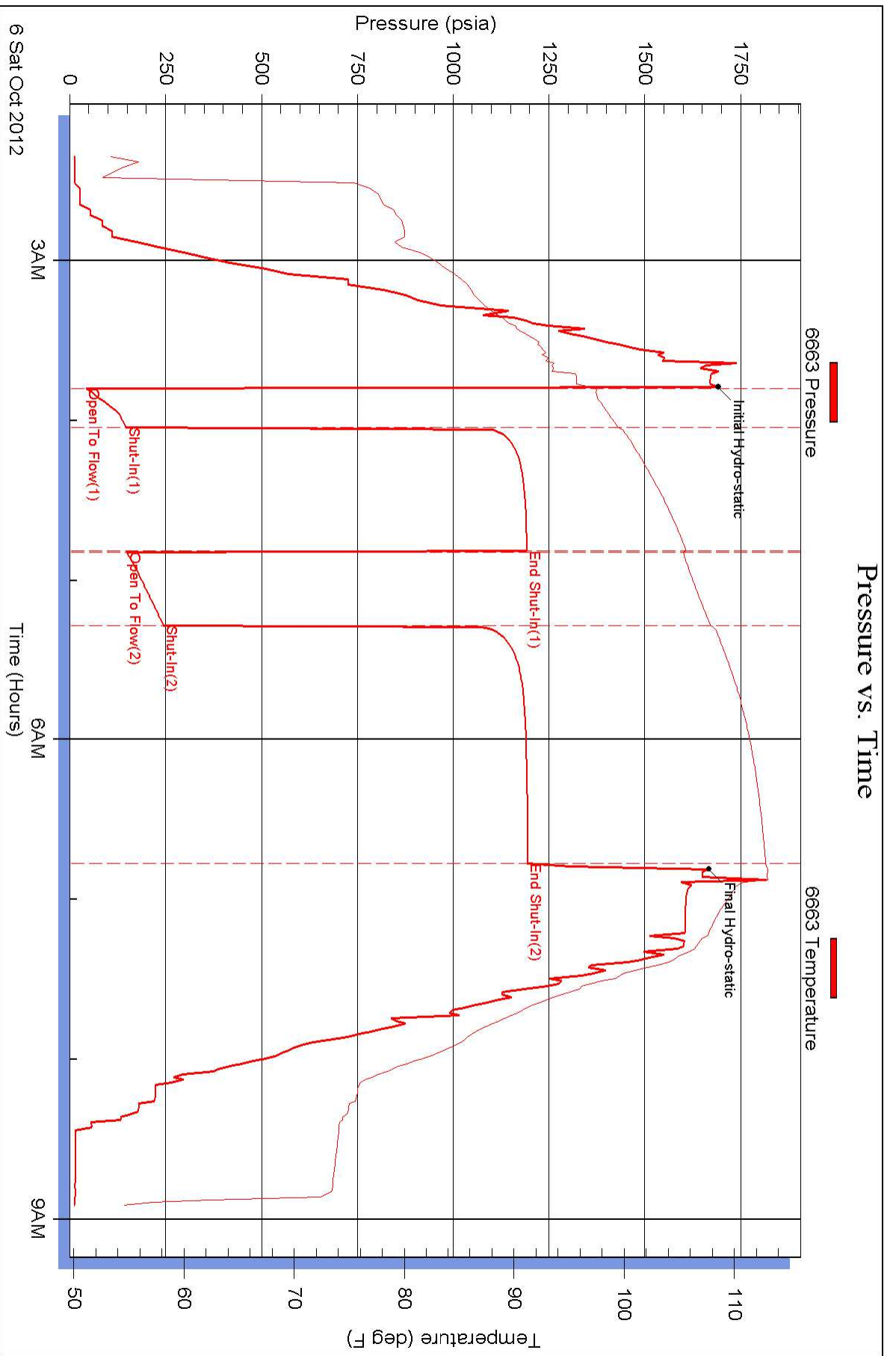
Recovery Table

Length ft	Description	Volume bbl
434.00	Water cut muddy oil	4.118
0.00	Oil 5% Mud 10% Water 85%	0.000
62.00	Mud cut w atery oil	0.870
0.00	Oil 5% Mud 90% Water 5%	0.000
0.00	Chlorides 34,000@76 degrees	0.000

Total Length: 496.00 ft Total Volume: 4.988 bbl
Num Fluid Samples: 0 Num Gas Bombs: 0 Serial #:
Laboratory Name: Laboratory Location:
Recovery Comments:

Pressure vs. Time





Scale 1:240 Imperial

Well Name: # 1-16 Penney
Surface Location: 2015'FSL, 2225'FWL, sec 16-19S-12W
Bottom Location:
API: 15-009-25758-00-00
License Number:
Spud Date: 9/29/2012 Time: 12:30 AM
Region: Barton County
Drilling Completed: 10/7/2012 Time: 3:30 AM
Surface Coordinates: 629929 & 1955275
Bottom Hole Coordinates:
Ground Elevation: 1874.00ft
K.B. Elevation: 1883.50ft
Logged Interval: 2500.00ft To: 3570.00ft
Total Depth: 3570.00ft
Formation: Arbuckle
Drilling Fluid Type: Chemical/Fresh Water Gel

OPERATOR

Company: Shelby Resources, LLC
Address: 445 Union Blvd, Suite 208
Lakewood, CO 80228

Contact Geologist: Janine Sturdavant
Contact Phone Nbr: 303-907-2209 / 720-274-4682
Well Name: # 1-16 Penney
Location: 2015'FSL, 2225'FWL, sec 16-19S-12W API: 15-009-25758-00-00
Pool: Field: Wildcat
State: Kansas Country: USA

LOGGED BY



Charlie Sturdavant Consulting

Company: Charlie Sturdavant Consulting
Address: 920 12th Street
Golden, CO 80401

Phone Nbr: 303-907-2295----303-384-9481
Logged By: Geologist Name: Charlie Sturdavant

NOTES

The Shelby # 1-16 Penney well was drilled to an RTD of 3570', bottoming in the Arbuckle. A TookeDAQ gas detector unit was employed during the drilling of all prospective formations, with gas shows noted in the Chase, Lansing and Arbuckle. Sample shows of oil were noted in the Lansing A, B, F, J, and K zones, and in the Arbuckle.

Two DST's were conducted in the Lansing, with rather disappointing results. The test of the lower Lansing recovered 20' of oil cut mud and 122' of oil and gas cut mud. Four DST's were conducted in the Arbuckle. The first three recovered several hundred feet of clean, gassy oil. The last DST recovered water and a small amount of oil.

Based on the sample shows, gas kicks, favorable DST results, and favorable log analysis, it was determined by all parties involved that the Arbuckle should be further tested through production pipe.

The samples were saved and will be available for review at the Kansas Geological Survey well sample library, located in Wichita, Kansas.

Respectfully submitted,
Charlie Sturdavant
Consulting Geologist

Charlie Sturdavant Consulting

WELL COMPARISON SHEET

DRILLING WELL					COMPARISON WELL				COMPARISON WELL			
Shelby # 1-16 Penney 2015' FSL & 2225' FWL Sec. 16, T19S R12W					Shelby # 1-16 Miller 1265' FSL & 1894' FEL Sec. 16, T19S R12W				Clinton Oil # 1-V Ferkling-Dalton NW-SE-SW Sec. 16, T19S R12W			
1883.5 KB					1883 KB		Structural Relationship		1889 KB		Structural Relationship	
Formation	Sample	Sub-Sea	Log	Sub-Sea	Log	Sub-Sea	Sample	Log	Log	Sub-Sea	Sample	Log
Anhydrite	725	1158.5	726	1157.5	713	1170	-11.5	-12.5	730	1159	-0.5	-1.5
Topeka	2834	-950.5	2832	-948.5	2824	-941	-9.5	-7.5	2830	-941	-9.5	-7.5
Queen Hill	2968	-1084.5	2965	-1081.5	2956	-1073	-11.5	-8.5	2968	-1079	-5.5	-2.5
Heebner	3062	-1178.5	3060	-1176.5	3053	-1170	-8.5	-6.5	3064	-1175	-3.5	-1.5
Toronto	3082	-1198.5	3084	-1200.5	3072	-1189	-9.5	-11.5	3082	-1193	-5.5	-7.5
Douglas	3096	-1212.5	3094	-1210.5	3086	-1203	-9.5	-7.5	3098	-1209	-3.5	-1.5
Brown Lime	3176	-1292.5	3176	-1292.5	3168	-1285	-7.5	-7.5	3180	-1291	-1.5	-1.5
Lansing	3189	-1305.5	3191	-1307.5	3183	-1300	-5.5	-7.5	3196	-1307	1.5	-0.5
Muncie Creek	3322	-1438.5	3318	-1434.5	3313	-1430	-8.5	-4.5	3324	-1435	-3.5	0.5
Stark Shale	3384	-1500.5	3376	-1492.5	3375	-1492	-8.5	-0.5	3387	-1498	-2.5	5.5
Base KC	3428	-1544.5	3420	-1536.5	3422	-1539	-5.5	2.5	3431	-1542	-2.5	5.5
Conglomerate	3441	-1557.5	3431	-1547.5	3434	-1551	-6.5	3.5	3454	-1565	7.5	17.5
Arbuckle	3450	-1566.5	3437	-1553.5	3466	-1583	16.5	29.5	3498	-1609	42.5	55.5
Total Depth	3570	-1686.5	3570	-1686.5	3550	-1667	-19.5	-19.5	3535	-1646	-40.5	-40.5

Daily Drilling Report

Charlie Sturdavant Consulting

DAILY DRILLING REPORT

Company: Charlie Sturdavant Consulting
920 12th Street
Golden, CO 80401

Well: # 1-16 Penney
Location: 2015' FSL & 2225' FWL
Sec. 16, T19S R12W
Barton County, KS

Captiva II Office: 303-274-4682
Jim Waechter Cell: 303-478-3388
Wellsite Geologist: Charlie Sturdavant
Cell: (303) 907-2295
Office: (303) 384-9481

Elevation: 1884' KB 1873.5' GL
Field: Wildcat
API No.: 15-009-25758-0000
Surface Casing: 8 5/8" set @ 750' KB

Drilling Contractor: Sterling Drilling Rig #2 620-388-5651, Tool Pusher: Uvaldo Martinez, cell: 620-388-1164

DATE	7:00 AM DEPTH	REMARKS
------	---------------	---------

9/29/2012	567 ft.	Drilling ahead. Spudded at 12:30 AM (00:30 hrs.)
9/30/2012	1165 ft.	Drilling ahead. Set 18 joints of new 24# 8-5/8" csg at 735 ft. Plug down @ 1430 hrs on 9/29/2012.
10/1/2012	2223 ft.	Drilling ahead.
10/2/2012	2972 ft.	Drilling ahead.
10/3/2012	3260 ft.	Pulling DST # 1, 3180-3260', in the Lansing A-E zones. Rec: 5' mud, SIP: 105-88#
10/4/2012	3420 ft.	TOOH w/ DST # 3, 3408-3460'. Rec: 516' Clean oil (99% oil), 186' oil cut gassy mud (10% gas, 75% oil, 15% mud), SIP: 1064-835#.
10/5/2012	3465 ft.	CFS, prep to run DST #4 in Arbuckle, 3454-3465'. Rec 392' free oil, 124' mud cut oil (90% oil), SIP: 839-779#.
10/6/2012	3470 ft.	Pulling DST # 5, 3465-3470', Rec: 558' clean oil, 124' mud cut oil (90% oil), SIP: 1001-922#. DST #6, 3470'3480', Rec: 434' O&MCW (5% Oil, 10% Mud, 85% W), 62' O&WCM (5% OIL, 5% Water, 90% Mud. SIP: 1189-1191#.
10/7/2012	3570 ft.	TOOH for logging. RTD 3570' reached @ 0330 hrs. Superior Well Services electric logging completed @ 1330 hrs.

SURFACE CO-ORDINATES

Well Type: Vertical
Longitude: Latitude:
N/S Co-ord: 629929
E/W Co-ord: 1955275









CONTRACTOR

Contractor: Sterling Drilling Co
Rig #: 2
Rig Type: mud rotary
Spud Date: 9/29/2012 Time: 12:30 AM
TD Date: 10/7/2012 Time: 3:30 AM
Rig Release: Time:

ELEVATIONS

K.B. Elevation: 1883.50ft Ground Elevation: 1874.00ft
K.B. to Ground: 9.50ft

ROCK TYPES

 Dolsec  Lmst fw>  shale, gry  shale, red
 Lmst fw<7  shale, grn  Carbon Sh  Shcol

ACCESSORIES

MINERAL

— Argillaceous
L Calcareous

FOSSIL

∩ Bioclastic or Fragmental
∧ Brachiopod

STRAT./SED. STRUCTS

~ Stylolites

STRINGER

••• Siltstone
— Shale

- △ Chert White
- ▲ Chert, dark
- ∟ Dolomitic
- ∩ Glauconite
- Mc Mica
- P Pyrite
- Brachiopod
- ∩ Bryozoa
- Crinoids
- ∩ Fish Scale
- F Fossils < 20%
- ⊗ Fossilinid
- ⊙ Oolite
- Oolites
- ⊗ Oomoldic
- Pelloids
- ⊙ Pellets

OTHER SYMBOLS

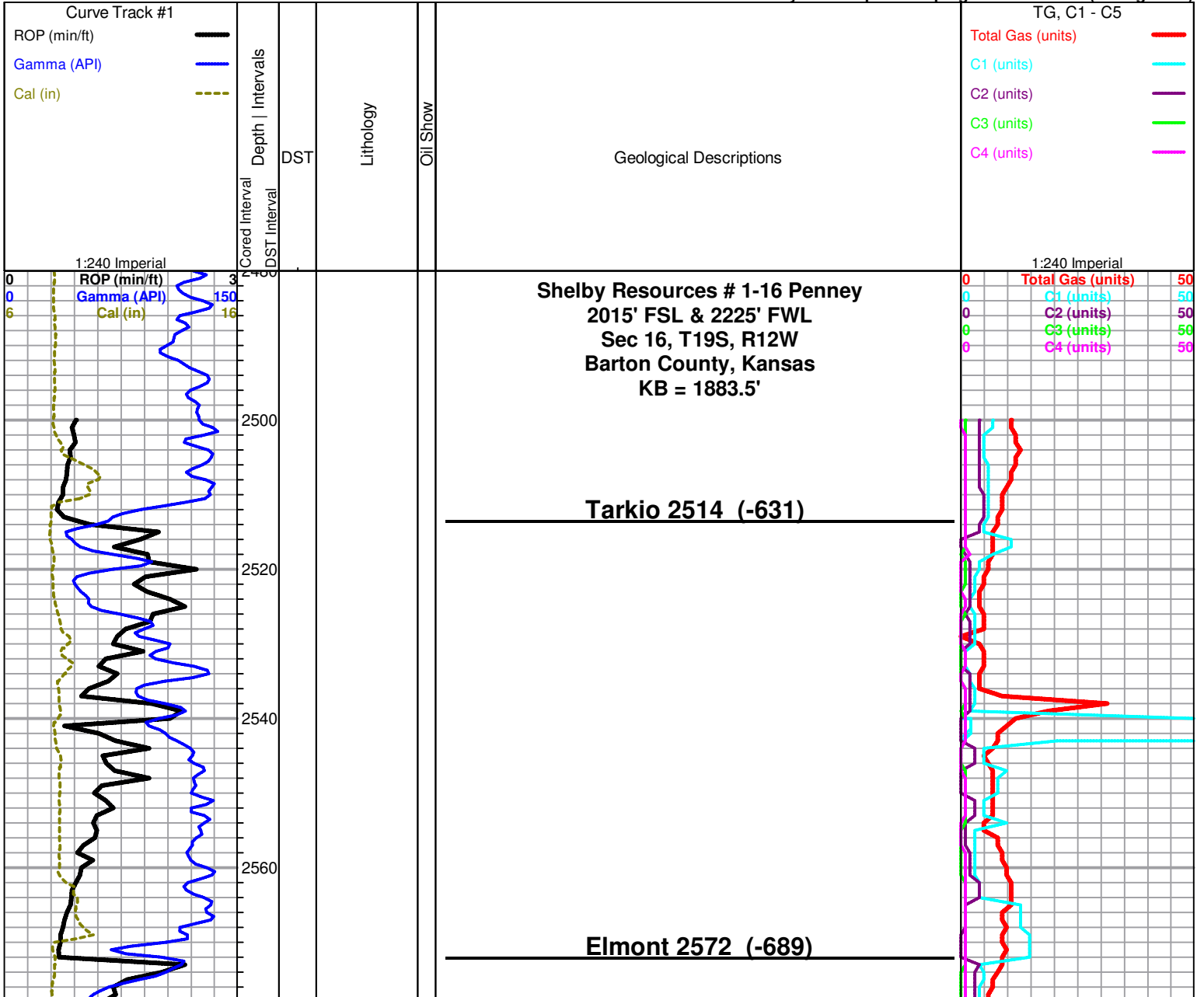
MISC

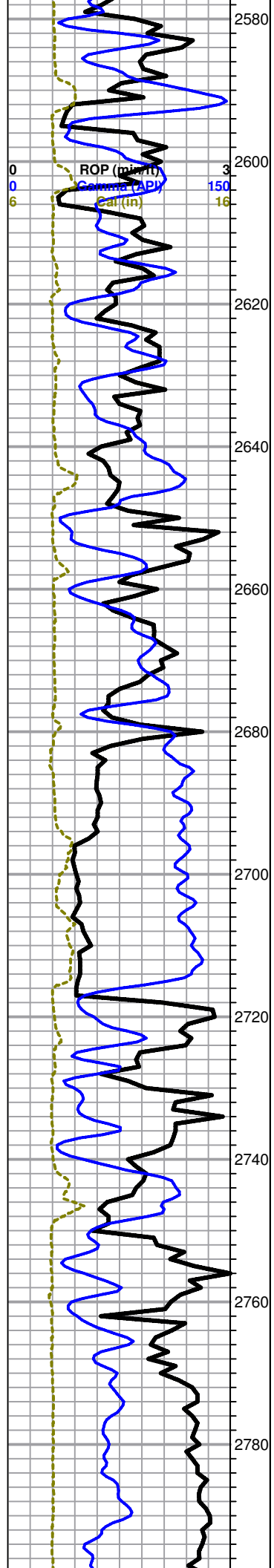
- Daily Report
- Digital Photo
- Document
- Folder
- Link
- Vertical Log File
- Horizontal Log File
- Core Log File
- Drill Cuttings Rpt

DST

- DST Int
- DST alt

Printed by GEOstrip VC Striplog version 4.0.7.0 (www.grsi.ca)





0
0
6

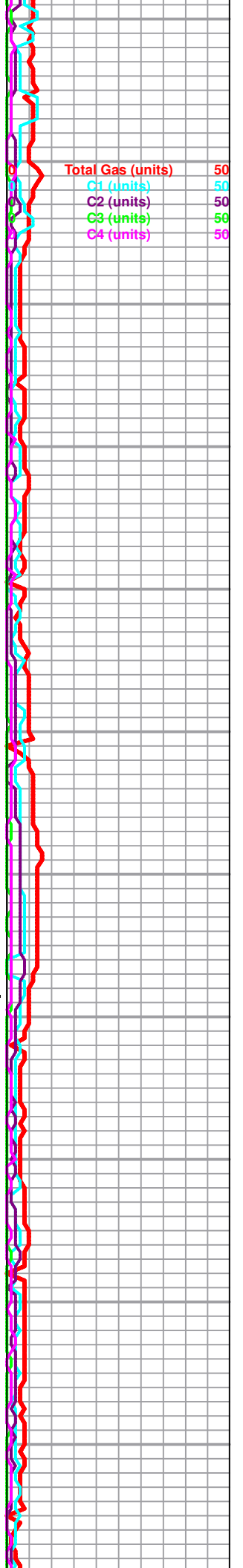
ROP (m/min)
Gamma (API)
Cal (in)

3
150
16

2580
2600
2620
2640
2660
2680
2700
2720
2740
2760
2780

Howard 2717 (-834)

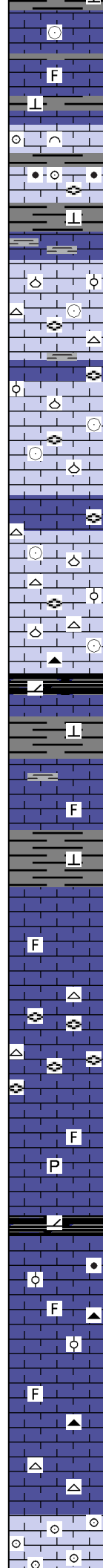
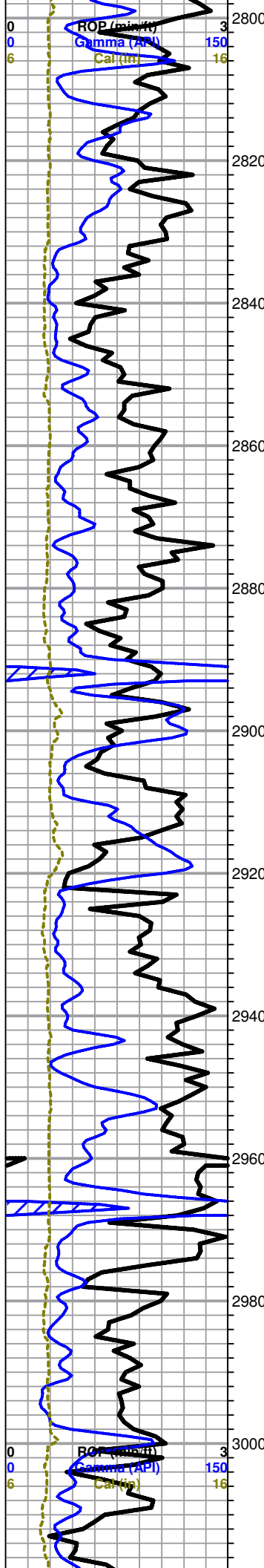
20' samples begin at 2800'



Total Gas (units) 50
C1 (units) 50
C2 (units) 50
C3 (units) 50
C4 (units) 50

0

2580
2600
2620
2640
2660
2680
2700
2720
2740
2760
2780



Limestone: gray to grayish-brown, argillaceous, sli fossiliferous, crinoids, set in a micro-xln matrix, wackestone to mudstone, tight, no shows. Streaks of gray calc shale.

Limestone: cream to tan to lt gray to mottled w/ gray pellets, some oolitic grainstone, some pelletal packstone, some fossiliferous packstone w/ fussulinids, some arg streaks, tight, no shows.

Topeka 2834 (-951)

Limestone: cream to lt tan to brown, fossiliferous, crinoids to 8mm long, fussulinids, brach., tr oolites, f-xln, tr wispy brown shale streaks, packstone to wackestone, fair inter-xln porosity, no shows. Some frags have been altered to chert w/ same characteristics as limestone.

Limestone: tan to lt brown, fossiliferous, as above, no chert.

Limestone: as above w/ vy lt gray to lt gray to brown vitreous, fossiliferous chert, fair porosity, no shows.

King Hill 2892 (-1009)

Shale: black, carbonaceous, firm, sli dolomitic.

Limestone: tan to lt brown, f-xln, sli fossiliferous, wackestone, no shows, thin brown and gray shale laminations.

Limestone: white, crypto-xln, dense, tight, no shows, micrite with a few ghost fossil frags.

Limestone: tan to lt brown, fossiliferous, fussulinids (some are replaced w/ chert), finely-xln matrix, weak inter-xln porosity, no shows, wackestone.

Limestone: vy lt gray to lt gray, micro-xln, tr fossil frags, mudstone, tight, no shows. Tr pyrite, large frags and disseminated specks..

Queen Hill 2968 (-1085)

Tr black shale, carbonaceous, dolomitic.

Limestone: cream to tan to brown, random fossil frags set in vf-xln matrix, oolites, pellets, wackestone, tight, no shows. Fossiliferous, brown chert, vitreous.

Limestone: tan, micro-xln, mudstone w/ brown to dark brown, vitreous chert.

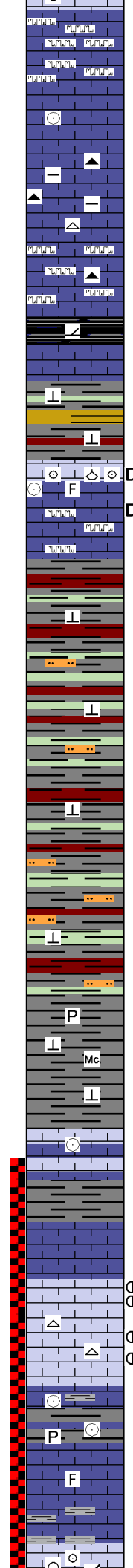
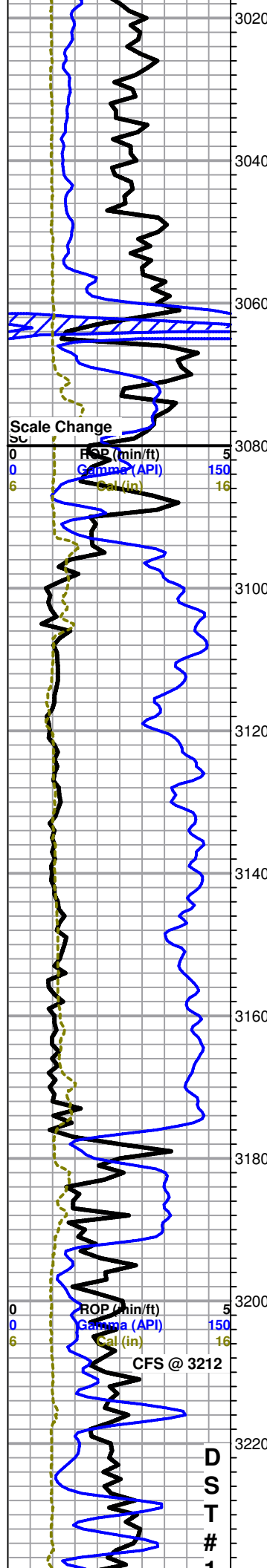
10' samples begin at 3000'

Limestone as above w/ tan chert.

Limestone: cream to lt tan, oolitic grainstone, good porosity, no shows.

Total Gas (units) 50
 C1 (units) 50
 C2 (units) 50
 C3 (units) 50
 C4 (units) 50

Total Gas (units) 50
 C1 (units) 50
 C2 (units) 50
 C3 (units) 50
 C4 (units) 50



Limestone: cream to tan, micro-xln, stylolitic mudstone.

Limestone: cream to tan, free crinoid fragments floating in a crypto-xln matrix, mudstone to micrite. No shows.

Limestone: pinkish-tan, micro-xln, sli reddish arg content, mudstone, gray to grayish-brown to white vitreous chert.

stylolites.

Heebner 3062 (-1179)

Shale: black, carbonaceous, firm, dolomitic.

Shale: gray, greenish-gray, maroon, calc., soft.

Toronto 3082 (-1199)

Limestone: cream to lt tan, fossil frags, crinoids, brach, oolites, set in a crypto-xln matrix, reddish-brown to maroon stylolites and shale streaks, sub-areal exposure indicated, fine- to med-xln lithographic streaks with spotty, dead oil staining, no fluor, vy weak cut, grainstone grading down into micrite.

Douglas 3096 (-1213)

Shale: vari-colored, gray, lt gray, lt greenish-gray, maroon, the lighter colors are micaceous to sli silty, calc to dolomitic.

Shale: predominantly gray, calcareous, soft. Micaceous w/ biotite and muscovite, tr pyrite.

Brown Lime 3176 (-1293)

Limestone: brown, fossil frags, crinoids, vf-xln matrix, packstone to wackestone, tight, no shows.

Lansing 3189 (-1306)

Limestone: cream, micro-xln, tight, hydrocarbon aroma in sample cup, but nsfo in tray. Mudstone.

Limestone: cream to lt tan, mudstone w/ spotty secondary porosity and spotty free oil staining, instant streaming cut, oil aroma. Tr chert: cream to vy lt gray, spicular, vitreous.

Limestone: tan to lt brownish-gray, fossiliferous, crinoids, argillaceous, set in vf- to micro-xln matrix, wackestone. Tr dark greenish-gray calc shale w/ tr pyrite.

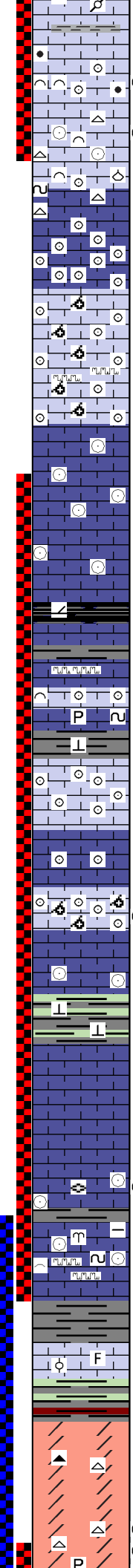
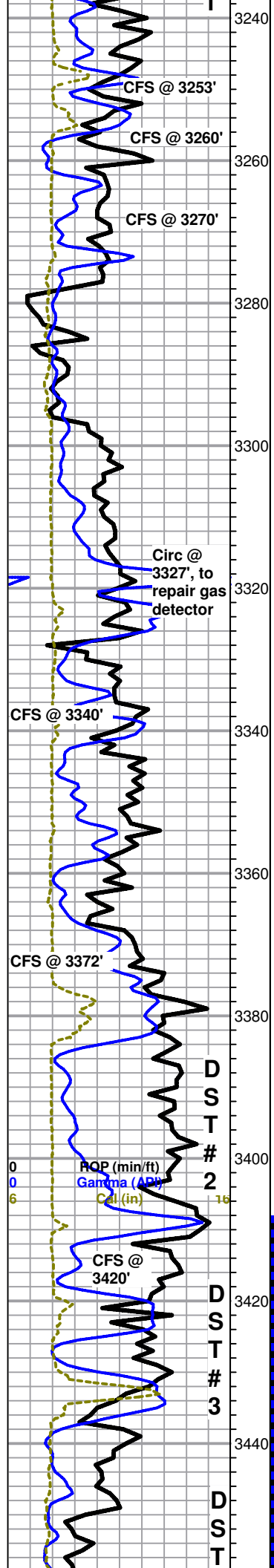
Limestone: tan to lt brown to vy lt gray, sli fossiliferous, micro-xln, wackestone to mudstone, tight, no shows.

DST#1 p.20001.jpg

Limestone: tan to brown, oolitic, pelletal, bioclastic grainstone to packstone, weak inter-xln porosity to tightly-cemented. No shows.

Mud-Co mud check
3055 ft. @ 0910 hrs.
9/02/2012
Vis. 49, Wt. 8.9
PV: 13, YP: 17
WL: 8.0, Cake: 1/32
CHL: 8,200 ppm,
Ca: 40ppm, pH 10.5
Sol: 3.8, LCM: 1
DMC: \$1297.70
CMC: \$8,049.00

Total Gas (units) 50
C1 (units) 50
C2 Mud-Co mud 0
C3 check 0
C4 3260 ft. @ 0815
hrs.
9/03/2012
Vis. 48, Wt. 9.2
PV: 13, YP: 16
WL: 8.8, Cake:
1/32
CHL: 14,600
ppm,
Ca: 160ppm, pH
10.0



Limestone: as above w/ fussionilids and wispy brownish-gray shale streaks and laminations.
 40 min sample: Limestone: tan to brown, oolitic, bioclastic, pelletal grainstone w/ spotty inter-xln porosity and oil staining, weak dull yellow fluor and weak slow cut.
 Limestone: brown, arg, fossiliferous, crinoids, fragments, set in a vf-xln matrix, one frag has secondary porosity w/ live oil staining, instant streaming cut.
 Chert: tan, cream, lt gray, brown, fossiliferous, vitreous.
 Limestone: cream to tan, glauconite specks, med-xln bioclastic, oolitic grainstone, brachiopods, grades down into brown vf-xln mudstone, weak to little porosity, no shows.
 Limestone: cream to tan, oolitic grainstone, oolites to 1.5mm in dia., very well-cemented, tight, no shows.
 Limestone: lt tan, oolitic grainstone w/ excellent oomoldic porosity, voids to 0.75mm in dia., no shows.
 Stylolites in a micrite, mixed in with oomoldic limestone as above.
 Limestone: tan to brown, fossiliferous, crinoids set in a micro- to crypto-xln matrix, sli arg, wackestone, tight, no shows.

Muncie Creek 3322 (-1439)

Shale: black, carbonaceous, firm, dolomitic. Appears in the circ sample.
 Limestone: cream to lt tan, micro- to crypto-xln, no fossils, mudstone and micrite, tight, no shows. Stylolites.
 Tr glauconite, tr sparry calcite, tr brown stylolites, tr pyrite. No shows. Tr med-xln, bioclastic, oolitic packstone, no shows.
 Shale: gray, greenish-gray, calc., soft.
 Limestone: cream, oolitic grainstone, tightly-cemented to weak porosity, no shows.
 Limestone: cream, crypto-xln, ghost oolites, but re-xlized into a micrite. Former oolitic grainstone. No shows, tight.
 Limestone: cream to lt tan, oolitic grainstone, oomoldic and inter-xln porosity in the cement, Faint odor, free oil in the porosity, weak to fair cut, no bleeding or gas bubbles. Becomes micritic w/ depth.
 Limestone: cream to lt tan, micro- to crypto-xln, mudstone, tight, no shows.
 Limestone: tan to brown, sli arg., fossil frags, crinoids, f- to med-xln, wackestone, tight, no shows.
 Shale: Green, greenish-gray, gray, calc, soft to firm.



Limestone: cream, micro- to crypto-xln, mudstone, tight, no shows.
 Limestone: cream to very lt gray, few fossil frags, micro- to crypto-xln mudstone to micrite, tight, no shows.
 Limestone: cream to tan, tr fossil frags, crinoids, fussionilids, set in a micro-xln matrix, tr arg in some frags, wackestone to mudstone, faint oil aroma, spots of sparry, secondary calcite and associated porosity, stained w/ heavy to dead oil, instant streaming cut w/ bright yellow fluor., tr honey-colored chert. Fish scales, glauconite, rhombopora.
 Limestone: tan to lt brown, mottled w/ reddish-brown spots, stylolites, subareal exposure indicated, soil profile, rootlets, f-xln to micro-xln, few crinoid frags, tr clear sparry calcite patches, mudstone, no shows.

Limestone: tan to lt brown, fossil frags, oolites, exposed to diagenic altn., vf-xln matrix, packstone,

Arbuckle 3450 (-1567)

Shale: gray, greenish-gray, maroon, calc to dolomitic, firm to soft, tr chert: dark brown to amber, vitreous. Hydrocarbon aroma, associated w/ vf-xln dolomite: lt brown w/ oil staining, dull yellow fluor, slow cut, tr secondary micro-vuggy porosity in a tight mudstone, partial areal exposure indicated.



Dolomite: cream to tan, vf-succrosic, lightly stained with oil, bright yellow fluor., no cut w/o acid, then it floods out.

Sol: 5.6, LCM: tr
 DMC: \$236.30
 CMC: \$8,285.30

Change bit from J2 to QX 28.

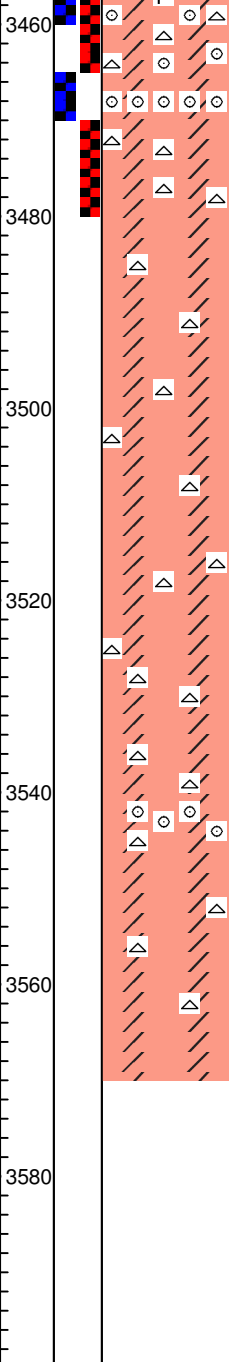
Strap was 1.96' long to board.
 Deviation: 1/2 degree

Mud-Co mud check
 3420 ft. @ 0915 hrs.
 9/04/2012
 Vis. 56, Wt. 9.2
 PV: 18, YP: 17
 WL: 6.8, Cake: 1/32
 CHL: 5,800 ppm,
 Ca: 40ppm, pH 10.5
 Sol: 6.1, LCM: 2
 DMC: \$1,955.35
 CMC: \$10,240.65

Mud-Co mud check
 3465 ft. @ 1200 hrs.
 9/05/2012
 Vis. 49, Wt. 9.3
 PV: 18, YP: 16
 WL: 6.4, Cake: 1/32
 CHL: 5,000 ppm,
 Ca: 40ppm, pH 9.5
 Sol: 6.7, LCM: 1
 DMC: \$889.85
 CMC: \$11,130.50

Flow Gas (units)	150
C1 (units)	150
C2 (units)	150
C3 (units)	150
C4 (units)	150

CFS @ 3460' #
 CFS @ 3465' 4
 DST #5
 CFS @ 3470'
 DST #6
 CFS @ 3480'



● Dolomite: as above w/ oolitic grainstone and tr micrite. Strong aroma, good uniform staining of live oil, slow cut w/o acid. Tr honey colored chert. 3465': med-xln oolitic grainstone w/ secondary porosity in cement, micro vugs, spotty oil stain restricted to porosity, floating oil on water, dark oil, immediate cut, bright fluor, tr amber, milky and white oolitic chert. Some med-xln succrosic w/ oil in inter-xln porosity, some tight mudstone. Tr pyrite. Over-all, better reservoir-quality rock than the 1st 10'. Some arenaceous frags w/ well-rounded, f- to med gr qtz grains.

📷 Penny #1-16 DST#5 p.20001.jpg

3470: Dolomite: cream to lt tan, oolitic grainstone, excellent inter-oolite porosity, much of the cement has been removed, spotty live oil staining in the por., strong oil aroma, instant steaming cut. After drying out the samples are re-crystallized oolites, coarsely succrosic, .1-.2mm rhombs.

3480: Dolomite: cream to lt tan, vf- to micro-xln, tight mudstone to vf-xln succrosic, no shows, chert: light cloudy milky white to tan to amber, vitreous. A few fragments have spotty oil shows in spotty pinpoint porosity similar to those shows at the top of Arb. A few frags of med- to f-xln dolo w/ fair inter-xln por., no shows in those.

📷 Penny #1-16 DST#6 p.20001.jpg

3480-3520: Dolomite: lt tan to tan, finely succrosic w/ minor med-xln zones, rhombs to 0.6mm, but mostly .1-.2mm. Inter-xln porosity appears to be in streaks, ranging from tight to good. Chert: translucent, white to cloudy and milky white, vitreous, some is oolitic, some is fossilized arenaceous. No shows.

3520-3570: Dolomite: lt grayish brown to grayish tan, some mottled w/ tan and reddish-brown, some is oolitic, tr arenaceous frags., f- to med-xln w/ streaks of micro-xln, good inter-xln porosity to tight, no shows, w/ chert as above.

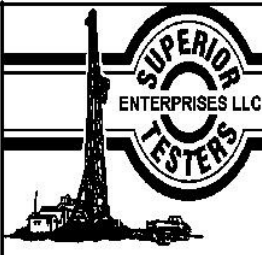
Mud-Co mud check
 3480 ft. @ 1230 hrs.
 9/06/2012
 Vis. 46, Wt. 9.0
 PV: 12, YP: 10
 WL: 6.4, Cake: 1/32
 CHL: 4,000 ppm,
 Ca: 40ppm, pH 10.5
 Sol: 4.6, LCM: 1
 DMC: \$790.45
 CMC: \$11,920.95

RTD 3570 (-1687)

Vis: 49, Wt: 9.1

**Rotary TD 3570' @ 0330 hrs, 10/07/2012
 Superior Well Services Logging TD 3570'
 Complete logging operations 1330 hrs 10/07/2012**

**Geologist: Charlie Sturdavant off location
 @ 1400 hrs. 10/07/2012**

	DRILL STEM TEST REPORT	
	Shelby Resources	16-19s-12w-Barton
	2717 Canal Blvd. Hays Kansas 67601	Penny 1-16
ATTN: Charlie Sturdavant	Job Ticket: 17275	DST#: 1
	Test Start: 2012.10.03 @ 01:01:00	

GENERAL INFORMATION:

Formation: **Lansing A-F**
 Deviated: No Whipstock: ft (KB)
 Time Tool Opened: 02:42:00
 Time Test Ended: 07:33:30

Test Type: Conventional Bottom Hole (Initial)
 Tester: Dustin Ellis
 Unit No: 3315-Great Bend-25

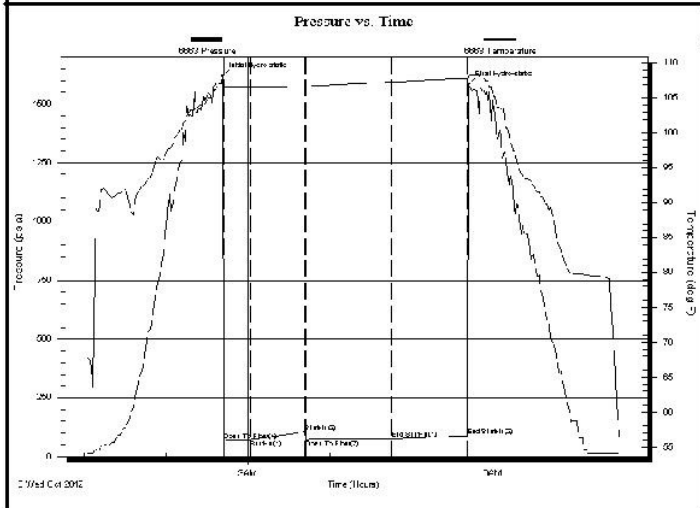
Interval: **3180.00 ft (KB) To 3260.00 ft (KB) (TVD)**
 Total Depth: 3260.00 ft (KB) (TVD)
 Hole Diameter: 7.88 inches Hole Condition: Fair

Reference Elevations: 1883.00 ft (KB)
 1874.00 ft (CF)
 KB to GR/CF: 9.00 ft

Serial #: 6663 Inside

Press@RunDepth: 71.64 psia @ 3256.27 ft (KB)
 Start Date: 2012.10.03 End Date: 2012.10.03 Capacity: 5000.00 psia
 Start Time: 01:01:00 End Time: 07:33:30 Last Calib.: 2012.10.03
 Time On Btm: 2012.10.03 @ 02:41:30
 Time Off Btm: 2012.10.03 @ 05:42:00

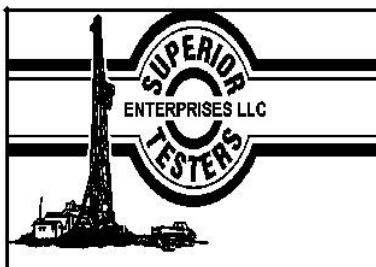
TEST COMMENT: 1st Open 15 minutes Very weak surface blow.
 1st Shut in 45 minutes No blow back
 2nd Open 60 minutes Weak surface blow
 2nd Shut in 60 minutes No blow back



PRESSURE SUMMARY			
Time (Min.)	Pressure (psia)	Temp (deg F)	Annotation
0	1620.21	106.78	Initial Hydro-static
1	68.20	106.48	Open To Flow (1)
20	71.64	106.47	Shut-in(1)
60	105.10	106.71	Shut-in(2)
61	72.08	106.70	Open To Flow (2)
124	75.16	107.32	End Shut-in(1)
180	88.42	107.81	End Shut-in(2)
181	1583.44	108.16	Final Hydro-static

Recovery		
Length (ft)	Description	Volume (bbl)
5.00	Mud 100%	0.02

Gas Rates			
	Choke (inches)	Pressure (psia)	Gas Rate (Mcf/d)



DRILL STEM TEST REPORT

Shelby Resources
 2717 Canal Blvd. Hays Kansas 67601
 ATTN: Charlie Sturdavant

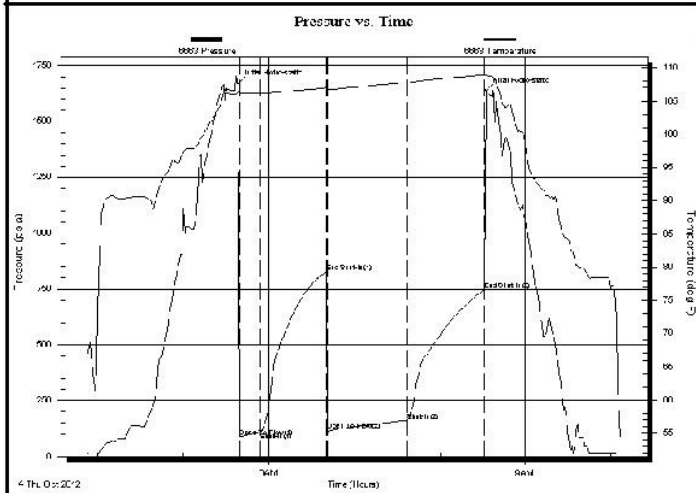
16-19s-12w-Barton
Penny 1-16
 Job Ticket: 17851 **DST#: 2**
 Test Start: 2012.10.04 @ 03:52:00

GENERAL INFORMATION:

Formation: **Kansas City**
 Deviated: No Whipstock: ft (KB)
 Time Tool Opened: 05:39:30
 Time Test Ended: 10:07:00
 Test Type: Conventional Bottom Hole (Initial)
 Tester: Dustin Ellis
 Unit No: 3315-Great Bend-25
 Interval: **3304.00 ft (KB) To 3420.00 ft (KB) (TVD)**
 Total Depth: 3420.00 ft (KB) (TVD)
 Hole Diameter: 7.88 inches Hole Condition: Fair
 Reference Elevations: 1883.00 ft (KB)
 1874.00 ft (CF)
 KB to GR/CF: 9.00 ft

Serial #: 6663 Inside
 Press@RunDepth: 160.81 psia @ 3416.51 ft (KB) Capacity: 5000.00 psia
 Start Date: 2012.10.04 End Date: 2012.10.04 Last Calib.: 2012.10.04
 Start Time: 03:52:00 End Time: 10:07:00 Time On Btm: 2012.10.04 @ 05:38:30
 Time Off Btm: 2012.10.04 @ 08:32:30

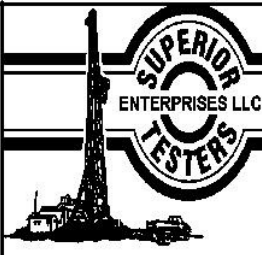
TEST COMMENT: 1st Open 15 minutes Fair blow blew 2 inches.
 1st Shut in 45 minutes No blow back
 2nd Open 60 minutes Fair blow blew bottom bucket 23 minutes
 2nd Shut in 60 minutes No blow back



PRESSURE SUMMARY			
Time (Min.)	Pressure (psia)	Temp (deg F)	Annotation
0	1669.39	106.43	Initial Hydro-static
1	89.33	106.16	Open To Flow (1)
16	106.94	106.19	Shut-in(1)
62	826.39	107.00	End Shut-in(1)
63	118.71	106.82	Open To Flow (2)
119	160.81	107.81	Shut-in(2)
173	744.97	108.94	End Shut-in(2)
174	1637.92	108.88	Final Hydro-static

Recovery		
Length (ft)	Description	Volume (bbl)
20.00	Mud cut oil 10% Oil 90% Mud	0.10
122.00	Mud cut gassy oil	0.60
0.00	Gas 30% Oil 20% Mud 50%	0.00

Gas Rates			
	Choke (inches)	Pressure (psia)	Gas Rate (Mcf/d)

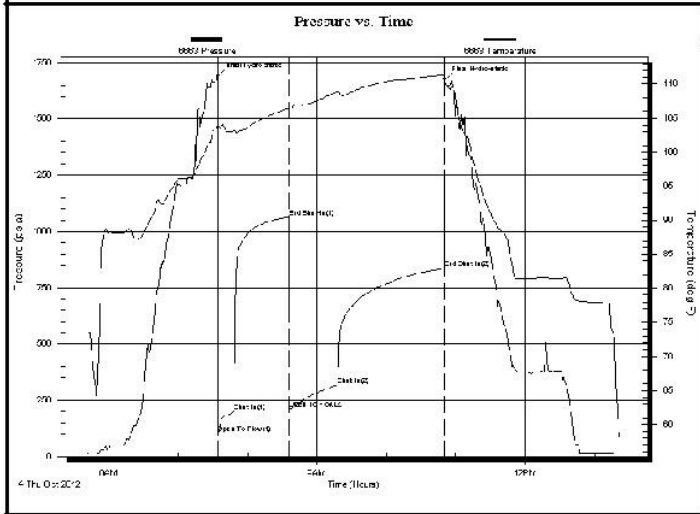
	DRILL STEM TEST REPORT	
	Shelby Resources	16-19s-12w-Barton
	2717 Canal Blvd. Hays Kansas 67601	Penny 1-16
ATTN: Charlie Sturdavant	Job Ticket: 17852	DST#: 3
	Test Start: 2012.10.04 @ 05:40:00	

GENERAL INFORMATION:

Formation: Arbuckle	Test Type: Conventional Bottom Hole (Initial)
Deviated: No Whipstock: ft (KB)	Tester: Dustin Ellis
Time Tool Opened: 07:34:30	Unit No: 3315-Great Bend-25
Time Test Ended: 13:23:00	Reference Elevations: 1883.00 ft (KB)
Interval: 3408.00 ft (KB) To 3460.00 ft (KB) (TVD)	1874.00 ft (CF)
Total Depth: 3460.00 ft (KB) (TVD)	KB to GR/CF: 9.00 ft
Hole Diameter: 7.88 inches	Hole Condition: Fair

Serial #: 6663	Inside	Capacity: 5000.00 psia
Press@RunDepth: 316.57 psia @ 3456.72 ft (KB)	Start Date: 2012.10.04	End Date: 2012.10.04
Start Time: 05:40:00	End Time: 13:23:00	Time On Btm: 2012.10.04 @ 07:34:00
		Time Off Btm: 2012.10.04 @ 10:50:30

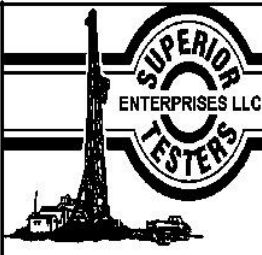
TEST COMMENT: 1st Open 15 minutes Fair building blow blew bottom bucket 4 minutes
 1st Shut in 45 minutes Yes blow back
 2nd Open 45 minutes Fair building blow blew bottom bucket in 8 minutes.
 2nd Shut in 90 minutes Yes blow back



PRESSURE SUMMARY			
Time (Min.)	Pressure (psia)	Temp (deg F)	Annotation
0	1692.15	103.86	Initial Hydro-static
1	102.62	103.69	Open To Flow (1)
14	200.42	103.13	Shut-in(1)
62	1064.29	106.43	End Shut-in(1)
63	212.23	106.50	Open To Flow (2)
104	316.57	108.93	Shut-in(2)
196	835.62	111.33	End Shut-in(2)
197	1674.08	110.23	Final Hydro-static

Recovery		
Length (ft)	Description	Volume (bbl)
516.00	Clean oil Oil 99% Mud 1%	5.27
186.00	Oil cut gassy mud	2.61
0.00	Gas 10% Oil 75% Mud 15%	0.00
0.00	Gravity of oil 39 corrected	0.00

Gas Rates			
	Choke (inches)	Pressure (psia)	Gas Rate (Mcf/d)

	DRILL STEM TEST REPORT	
	Shelby Resources	16-19s-12w-Barton
	2717 Canal Blvd. Hays Kansas 67601	Penny 1-16
ATTN: Charlie Sturdavant	Job Ticket: 17853	DST#: 4
	Test Start: 2012.10.05 @ 09:00:00	

GENERAL INFORMATION:

Formation: **Arbuckle**
 Deviated: No Whipstock: ft (KB)
 Time Tool Opened: 10:28:30
 Time Test Ended: 16:14:00

Test Type: Conventional Bottom Hole (Initial)
 Tester: Dustin Ellis
 Unit No: 3315-Great Bend-25

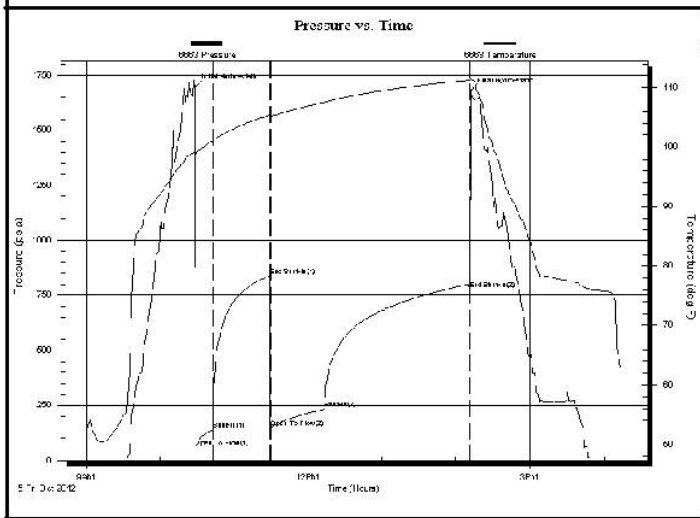
Interval: **3454.00 ft (KB) To 3465.00 ft (KB) (TVD)**
 Total Depth: 3465.00 ft (KB) (TVD)
 Hole Diameter: 7.88 inches Hole Condition: Fair

Reference Elevations: 1883.00 ft (KB)
 1874.00 ft (CF)
 KB to GR/CF: 9.00 ft

Serial #: 6663 Inside

Press@RunDepth: 234.47 psia @ 3461.00 ft (KB) Capacity: 5000.00 psia
 Start Date: 2012.10.05 End Date: 2012.10.05 Last Calib.: 2012.10.05
 Start Time: 09:00:00 End Time: 16:14:00 Time On Btm: 2012.10.05 @ 10:28:00
 Time Off Btm: 2012.10.05 @ 14:12:00

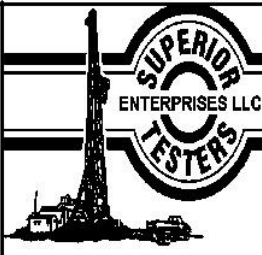
TEST COMMENT: 1st Open 15 minutes Fair building blow reached bottom bucket 10 minutes.
 1st Shut in 45 minutes No blow back
 2nd Open 45 minutes Fair building blow blew bottom bucket 10 minutes.
 2nd Shut in 120 minutes Yes blow back



PRESSURE SUMMARY			
Time (Min.)	Pressure (psia)	Temp (deg F)	Annotation
0	1695.39	99.10	Initial Hydro-static
1	57.98	98.43	Open To Flow (1)
15	138.96	101.08	Shut-in(1)
61	839.21	105.35	End Shut-in(1)
63	149.96	105.22	Open To Flow (2)
106	234.47	107.54	Shut-in(2)
223	779.73	111.24	End Shut-in(2)
224	1678.42	111.44	Final Hydro-static

Recovery		
Length (ft)	Description	Volume (bbl)
392.00	Free oil 1005	3.53
124.00	Oil cut mud Oil 90% Mud 10%	1.74
0.00	Gravity of oil 36 corrected	0.00

Gas Rates			
	Choke (inches)	Pressure (psia)	Gas Rate (Mcf/d)

	DRILL STEM TEST REPORT	
	Shelby Resources	16-19s-12w-Barton
	2717 Canal Blvd. Hays Kansas 67601	Penny 1-16
ATTN: Charlie Sturdavant	Job Ticket: 17854	DST#: 5
	Test Start: 2012.10.05 @ 11:15:00	

GENERAL INFORMATION:

Formation: **Arbuckle**
 Deviated: No Whipstock: ft (KB)
 Time Tool Opened: 13:21:00
 Time Test Ended: 19:12:00

Test Type: Conventional Bottom Hole (Initial)
 Tester: Dustin Ellis
 Unit No: 3315 Great Bend-25

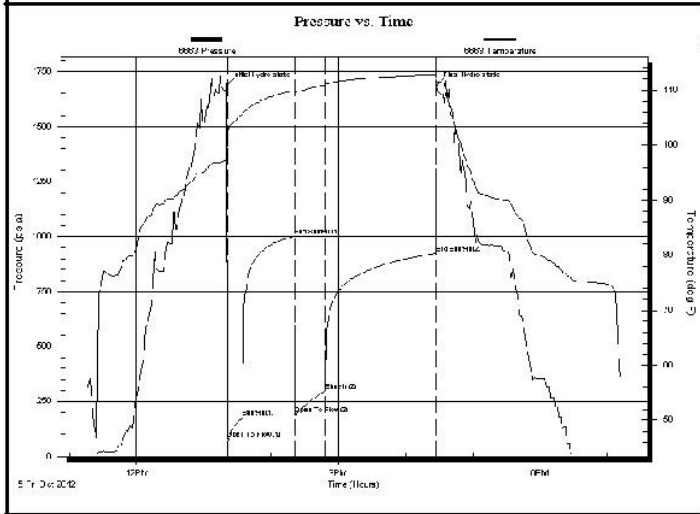
Interval: **3465.00 ft (KB) To 4370.00 ft (KB) (TVD)**
 Total Depth: 4370.00 ft (KB) (TVD)
 Hole Diameter: 7.88 inches Hole Condition: Fair

Reference Elevations: 1883.00 ft (KB)
 1874.00 ft (CF)
 KB to GR/CF: 9.00 ft

Serial #: 6663 Inside

Press@RunDepth: 300.18 psia @ 3466.00 ft (KB) Capacity: 5000.00 psia
 Start Date: 2012.10.05 End Date: 2012.10.05 Last Calib.: 2012.10.06
 Start Time: 11:15:00 End Time: 19:12:00 Time On Btm: 2012.10.05 @ 13:20:30
 Time Off Btm: 2012.10.05 @ 16:27:30

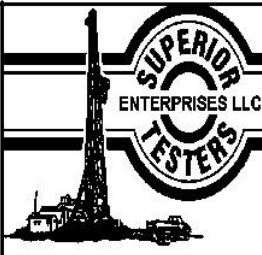
TEST COMMENT: 1st Open 15 minutes Fair building blow blew bottom bucket 6 minutes
 1st Shut in 45 minutes No blow back
 2nd Open 30 minutes Fair building blow blew bottom bucket 6 minutes
 2nd Shut in 90 minutes No blow back



PRESSURE SUMMARY			
Time (Min.)	Pressure (psia)	Temp (deg F)	Annotation
0	1687.44	97.41	Initial Hydro-static
1	80.35	101.92	Open To Flow (1)
14	177.05	105.65	Shut-in(1)
61	1001.97	109.92	End Shut-in(1)
61	190.06	109.71	Open To Flow (2)
88	300.18	110.98	Shut-in(2)
187	922.87	112.73	End Shut-in(2)
187	1686.30	111.51	Final Hydro-static

Recovery		
Length (ft)	Description	Volume (bbl)
558.00	Clean free oil 100%	5.86
124.00	Oil cut mud 90% Oil Mud 10%	1.74
0.00	Gravity of oil 37 corrected	0.00

Gas Rates			
	Choke (inches)	Pressure (psia)	Gas Rate (Mcf/d)

	DRILL STEM TEST REPORT	
	Shelby Resources	16-19s-12w-Barton
	2717 Canal Blvd. Hays Kansas 67601	Penny 1-16
ATTN: Charlie Sturdavant	Job Ticket: 17855	DST#: 6
	Test Start: 2012.10.06 @ 02:20:00	

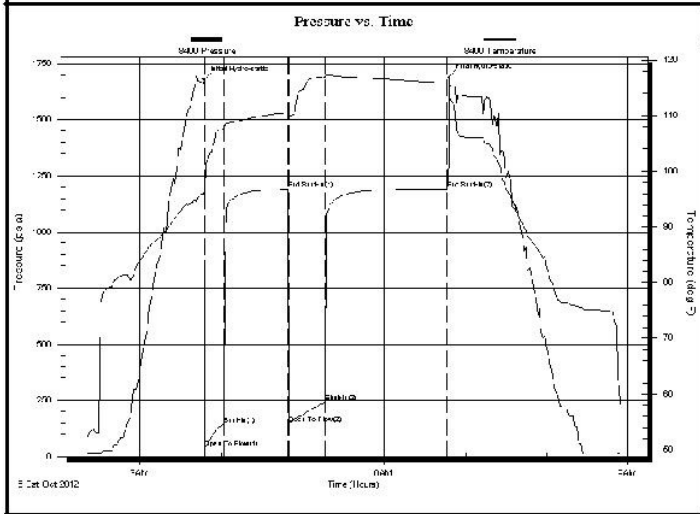
GENERAL INFORMATION:

Formation: Arbuckle	Test Type: Conventional Bottom Hole (Initial)
Deviated: No Whipstock: ft (KB)	Tester: Dustin Ellis
Time Tool Opened: 03:47:30	Unit No: 3315-Great Bend-25
Time Test Ended: 08:55:00	Reference Elevations: 1883.00 ft (KB)
Interval: 3470.00 ft (KB) To 3480.00 ft (KB) (TVD)	1874.00 ft (CF)
Total Depth: 3480.00 ft (KB) (TVD)	KB to GR/CF: 9.00 ft
Hole Diameter: 7.88 inches	Hole Condition: Fair

Serial #: 8400 Outside

Press@RunDepth: 242.00 psia @ 3477.00 ft (KB)	Capacity: 5000.00 psia
Start Date: 2012.10.06	End Date: 2012.10.06
Start Time: 02:20:00	End Time: 08:55:00
Last Calib.: 2012.10.06	Time On Btm: 2012.10.06 @ 03:47:00
Time Off Btm: 2012.10.06 @ 06:48:00	

TEST COMMENT: 1st Open 15 minutes Fair building blow blew bottom bucket 11 minutes.
 1st Shut in 45 minutes No blow back
 2nd Open 30 minutes Fair building blow blew bottom bucket 13 minutes.
 2nd Shut in 90 minutes No blow back



PRESSURE SUMMARY			
Time (Min.)	Pressure (psia)	Temp (deg F)	Annotation
0	1678.96	96.23	Initial Hydro-static
1	38.59	96.19	Open To Flow (1)
15	143.53	107.88	Shut-In(1)
62	1189.65	110.48	End Shut-In(1)
63	148.02	110.10	Open To Flow (2)
90	242.00	116.99	Shut-In(2)
180	1191.66	115.88	End Shut-In(2)
181	1690.34	114.89	Final Hydro-static

Recovery		
Length (ft)	Description	Volume (bbl)
434.00	Water cut muddy oil	4.12
0.00	Oil 5% Mud 10% Water 85%	0.00
62.00	Mud cut watery oil	0.87
0.00	Oil 5% Mud 90% Water 5%	0.00
0.00	Chlorides 34,000@76 degrees	0.00

Gas Rates			
	Choke (inches)	Pressure (psia)	Gas Rate (Mcf/d)

QUALITY OILWELL CEMENTING, INC.

Federal Tax I.D.# 20-2886107

Phone 785-483-2025
Cell 785-324-1041

Home Office P.O. Box 32 Russell, KS 67665

No. 5375

Date	9-29-12	Sec.	16	Twp.	19	Range	12	County	Barton	State	Ks	On Location		Finish	2:30 PM
Lease	Penney		Well No.	1-16		Location	Great Bend, Ks - E to 56+156 Jct, 2 1/2 W								
Contractor	Sterling		#2			Owner	to 20 rd, 1 1/4 E, 10 W into								
Type Job	Surface				To Quality Oilwell Cementing, Inc. You are hereby requested to rent cementing equipment and furnish cementer and helper to assist owner or contractor to do work as listed.										
Hole Size	12 1/4"		T.D.	740'		Charge To	Captiva								
Csg.	8 3/8"		Depth	743'		Street									
Tbg. Size			Depth			City	State								
Tool			Depth			The above was done to satisfaction and supervision of owner agent or contractor.									
Cement Left in Csg.	41.30'		Shoe Joint	41.30'		Cement Amount Ordered	325 Sx 60/40 3% CL 2% Gel								
Meas Line			Displace	44 1/2 BLS											

EQUIPMENT

Pumptrk	105	No.	Cementer	Nick	Common	195
			Helper			
Bulktrk	13	No.	Driver	Heath	Poz. Mix	130
			Driver			
Bulktrk	p.u.	No.	Driver	Rick	Gel.	6
			Driver			
					Calcium	14

JOB SERVICES & REMARKS

Remarks	Cement did Circulate.	Hulls	
Rat Hole		Salt	
Mouse Hole		Flowseal	
Centralizers		Kol-Seal	
Baskets		Mud CLR 48	
D/V or Port Collar		CFL-117 or CD110 CAF 38	
		Sand	
		Handling	345
		Mileage	

FLOAT EQUIPMENT

Guide Shoe	1	weld on
Centralizer		
Baskets		
AFU Inserts		
Float Shoe		
Latch Down		
	1 - Baffle plate	
	1 - Rubber plug	
Pumptrk Charge	Long Surface	
Mileage	8	

X Signature	Tax	
	Discount	
	Total Charge	

Customer	Shelby Resources	Lease No.				Date	10-8-12				
Lease	Penney	Well #	1-16								
Field Order #	6609	Station	Pratt	Casing	5 1/2	Depth	3547	County	Barton	State	KS
Type Job	CNW 5 1/2 LS			Formation				Legal Description	16-19-12		

PIPE DATA		PERFORATING DATA		FLUID USED		TREATMENT RESUME		
Casing Size	Tubing Size	Shots/Ft		Acid	RATE	PRESS	ISIP	
5 1/2							5 Min.	
Depth 3547	Depth	From	To	Pre Pad	Max			
Volume 84.5	Volume	From	To	Pad	Min		10 Min.	
Max Press 2500	Max Press	From	To	Frac	Avg		15 Min.	
Well Connection	Annulus Vol.	From	To		HHP Used		Annulus Pressure	
Plug Depth 3527	Packer Depth	From	To	Flush	Gas Volume		Total Load	

Customer Representative: Cris Gotschalt Station Manager: SCOTTY Treater: JOE MELSON

Service Units	19903	19905	19960	21010	37216				
Driver Names	MATTLE		YOUNG		MELSON				

Time	Casing Pressure	Tubing Pressure	Bbls. Pumped	Rate	Service Log
8:00					ON LOC-SAFETY MEETING
					RUN 85 JTS 5 1/2 X 15.5 CSG
					CENTRALIZERS 2, 3, 5, 7, 9
					BASKET ON 1
12:45					CSG ON BOTTOM
1:00					HOOK UP TO CSG - / Breaks circ. w/ Big
2:00	200		5	5	H2O SPACER
	200		12	5	MIX 60/40 POZ SCAVENGER @ 14 #
	200		24	5	MIX 2.42 CENTRIZERS @ 15 #
					SHUT DOWN CLEAR PUMP AND LINES
					DROP PLUG
					START DISP.
2:15	300			6.5	LIST PRESSURE
	500		74	4	SLOW RATE
2:30	1500		84	4	PLUG DOWN -
					CIRC. THRU JOB
					PLUG BH + MH
					JOB COMPLETE
					THANK YOU
					<i>Joe</i>

Conservation Division
Finney State Office Building
130 S. Market, Rm. 2078
Wichita, KS 67202-3802



Phone: 316-337-6200
Fax: 316-337-6211
<http://kcc.ks.gov/>

Mark Sievers, Chairman
Thomas E. Wright, Commissioner
Shari Feist Albrecht, Commissioner

Sam Brownback, Governor

November 07, 2012

Chris Gottschalk
Shelby Resources LLC
445 Union Boulevard
Suite 208
LAKEWOOD, CO 80228

Re: ACO1
API 15-009-25758-00-00
Penney 1-16
SW/4 Sec.16-19S-12W
Barton County, Kansas

Dear Production Department:

We are herewith requesting that the Well Completion Form ACO-1 and attached information for the subject well be held confidential for a period of two years.

Should you have any questions or need additional information regarding subject well, please contact our office.

Respectfully,
Chris Gottschalk