



Confidentiality Requested:

Yes  No

KANSAS CORPORATION COMMISSION 1101099  
OIL & GAS CONSERVATION DIVISION

Form ACO-1

August 2013

Form must be Typed  
Form must be Signed  
All blanks must be Filled

WELL COMPLETION FORM  
WELL HISTORY - DESCRIPTION OF WELL & LEASE

OPERATOR: License # \_\_\_\_\_

Name: \_\_\_\_\_

Address 1: \_\_\_\_\_

Address 2: \_\_\_\_\_

City: \_\_\_\_\_ State: \_\_\_\_\_ Zip: \_\_\_\_\_ + \_\_\_\_\_

Contact Person: \_\_\_\_\_

Phone: ( \_\_\_\_\_ ) \_\_\_\_\_

CONTRACTOR: License # \_\_\_\_\_

Name: \_\_\_\_\_

Wellsite Geologist: \_\_\_\_\_

Purchaser: \_\_\_\_\_

Designate Type of Completion:

- New Well       Re-Entry       Workover
- Oil       WSW       SWD       SIOW
- Gas       D&A       ENHR       SIGW
- OG       GSW       Temp. Abd.
- CM (Coal Bed Methane)
- Cathodic       Other (Core, Expl., etc.): \_\_\_\_\_

If Workover/Re-entry: Old Well Info as follows:

Operator: \_\_\_\_\_

Well Name: \_\_\_\_\_

Original Comp. Date: \_\_\_\_\_ Original Total Depth: \_\_\_\_\_

- Deepening       Re-perf.       Conv. to ENHR       Conv. to SWD
- Plug Back       Conv. to GSW       Conv. to Producer
- Commingled      Permit #: \_\_\_\_\_
- Dual Completion      Permit #: \_\_\_\_\_
- SWD      Permit #: \_\_\_\_\_
- ENHR      Permit #: \_\_\_\_\_
- GSW      Permit #: \_\_\_\_\_

Spud Date or Recompletion Date	Date Reached TD	Completion Date or Recompletion Date
-----------------------------------	-----------------	---

API No. 15 - \_\_\_\_\_

Spot Description: \_\_\_\_\_

\_\_\_\_\_ - \_\_\_\_\_ - \_\_\_\_\_ Sec. \_\_\_\_\_ Twp. \_\_\_\_\_ S. R. \_\_\_\_\_  East  West

\_\_\_\_\_ Feet from  North /  South Line of Section

\_\_\_\_\_ Feet from  East /  West Line of Section

Footages Calculated from Nearest Outside Section Corner:

- NE       NW       SE       SW

GPS Location: Lat: \_\_\_\_\_, Long: \_\_\_\_\_  
(e.g. xx.xxxxx)      (e.g. -xxx.xxxxx)

Datum:  NAD27       NAD83       WGS84

County: \_\_\_\_\_

Lease Name: \_\_\_\_\_ Well #: \_\_\_\_\_

Field Name: \_\_\_\_\_

Producing Formation: \_\_\_\_\_

Elevation: Ground: \_\_\_\_\_ Kelly Bushing: \_\_\_\_\_

Total Vertical Depth: \_\_\_\_\_ Plug Back Total Depth: \_\_\_\_\_

Amount of Surface Pipe Set and Cemented at: \_\_\_\_\_ Feet

Multiple Stage Cementing Collar Used?  Yes  No

If yes, show depth set: \_\_\_\_\_ Feet

If Alternate II completion, cement circulated from: \_\_\_\_\_

feet depth to: \_\_\_\_\_ w/ \_\_\_\_\_ sx cmt.

Drilling Fluid Management Plan

(Data must be collected from the Reserve Pit)

Chloride content: \_\_\_\_\_ ppm Fluid volume: \_\_\_\_\_ bbls

Dewatering method used: \_\_\_\_\_

Location of fluid disposal if hauled offsite:

Operator Name: \_\_\_\_\_

Lease Name: \_\_\_\_\_ License #: \_\_\_\_\_

Quarter \_\_\_\_\_ Sec. \_\_\_\_\_ Twp. \_\_\_\_\_ S. R. \_\_\_\_\_  East  West

County: \_\_\_\_\_ Permit #: \_\_\_\_\_

AFFIDAVIT

I am the affiant and I hereby certify that all requirements of the statutes, rules and regulations promulgated to regulate the oil and gas industry have been fully complied with and the statements herein are complete and correct to the best of my knowledge.

Submitted Electronically

KCC Office Use ONLY

- Confidentiality Requested  
Date: \_\_\_\_\_
- Confidential Release Date: \_\_\_\_\_
- Wireline Log Received
- Geologist Report Received
- UIC Distribution
- ALT  I  II  III Approved by: \_\_\_\_\_ Date: \_\_\_\_\_



1101099

Operator Name: \_\_\_\_\_ Lease Name: \_\_\_\_\_ Well #: \_\_\_\_\_

Sec. \_\_\_\_\_ Twp. \_\_\_\_\_ S. R. \_\_\_\_\_  East  West County: \_\_\_\_\_

**INSTRUCTIONS:** Show important tops of formations penetrated. Detail all cores. Report all final copies of drill stems tests giving interval tested, time tool open and closed, flowing and shut-in pressures, whether shut-in pressure reached static level, hydrostatic pressures, bottom hole temperature, fluid recovery, and flow rates if gas to surface test, along with final chart(s). Attach extra sheet if more space is needed.

Final Radioactivity Log, Final Logs run to obtain Geophysical Data and Final Electric Logs must be emailed to kcc-well-logs@kcc.ks.gov. Digital electronic log files must be submitted in LAS version 2.0 or newer AND an image file (TIFF or PDF).

Drill Stem Tests Taken <i>(Attach Additional Sheets)</i>	<input type="checkbox"/> Yes <input type="checkbox"/> No	<input type="checkbox"/> Log	Formation (Top), Depth and Datum	<input type="checkbox"/> Sample
Samples Sent to Geological Survey	<input type="checkbox"/> Yes <input type="checkbox"/> No	Name	Top	Datum
Cores Taken	<input type="checkbox"/> Yes <input type="checkbox"/> No			
Electric Log Run	<input type="checkbox"/> Yes <input type="checkbox"/> No			
List All E. Logs Run:				

CASING RECORD <input type="checkbox"/> New <input type="checkbox"/> Used							
Report all strings set-conductor, surface, intermediate, production, etc.							
Purpose of String	Size Hole Drilled	Size Casing Set (In O.D.)	Weight Lbs. / Ft.	Setting Depth	Type of Cement	# Sacks Used	Type and Percent Additives

ADDITIONAL CEMENTING / SQUEEZE RECORD				
Purpose:	Depth Top Bottom	Type of Cement	# Sacks Used	Type and Percent Additives
<input type="checkbox"/> Perforate				
<input type="checkbox"/> Protect Casing				
<input type="checkbox"/> Plug Back TD				
<input type="checkbox"/> Plug Off Zone				

Did you perform a hydraulic fracturing treatment on this well?  Yes  No *(If No, skip questions 2 and 3)*

Does the volume of the total base fluid of the hydraulic fracturing treatment exceed 350,000 gallons?  Yes  No *(If No, skip question 3)*

Was the hydraulic fracturing treatment information submitted to the chemical disclosure registry?  Yes  No *(If No, fill out Page Three of the ACO-1)*

Shots Per Foot	PERFORATION RECORD - Bridge Plugs Set/Type Specify Footage of Each Interval Perforated	Acid, Fracture, Shot, Cement Squeeze Record <i>(Amount and Kind of Material Used)</i>	Depth

TUBING RECORD:      Size: \_\_\_\_\_ Set At: \_\_\_\_\_ Packer At: \_\_\_\_\_ Liner Run:  Yes  No

Date of First, Resumed Production, SWD or ENHR. \_\_\_\_\_ Producing Method:  
 Flowing  Pumping  Gas Lift  Other *(Explain)* \_\_\_\_\_

Estimated Production Per 24 Hours	Oil Bbls.	Gas Mcf	Water Bbls.	Gas-Oil Ratio	Gravity

<b>DISPOSITION OF GAS:</b> <input type="checkbox"/> Vented <input type="checkbox"/> Sold <input type="checkbox"/> Used on Lease <i>(If vented, Submit ACO-18.)</i>	<b>METHOD OF COMPLETION:</b> <input type="checkbox"/> Open Hole <input type="checkbox"/> Perf. <input type="checkbox"/> Dually Comp. <input type="checkbox"/> Commingled <i>(Submit ACO-5)</i> <input type="checkbox"/> Other <i>(Specify)</i> _____ <input type="checkbox"/> Other <i>(Specify)</i> _____	<b>PRODUCTION INTERVAL:</b> _____ _____
--	---	---

Form	ACO1 - Well Completion
Operator	EnCana Oil & Gas (USA) Inc.
Well Name	J & A Associates 11H 1
Doc ID	1101099

#### Perforations

Shots Per Foot	Perforation Record	Material Record	Depth
8	8157-8466	32,000# prop & 5782 bbls SW	
8	7776-8095	32,000# prop & 4787 bbls SW	
8	7395-7714	32,000# prop & 4907 bbls SW	
8	7014-7333	32,000# prop & 4309 bbls SW	
8	6633-6952	29,150# prop & 4274 bbls SW	
8	6252-6571	32,000# prop & 5003 bbls SW	
8	5871-6190	32,000# prop & 4778 bbls SW	
8	5490-5809	32,000# prop & 4377 bbls SW	
8	5109-5428	32,000# prop & 4077 bbls acid	
8	4728-5047	32,000# prop & 4138 bbls SW	

Form	ACO1 - Well Completion
Operator	EnCana Oil & Gas (USA) Inc.
Well Name	J & A Associates 11H 1
Doc ID	1101099

### Casing

Purpose Of String	Size Hole Drilled	Size Casing Set	Weight	Setting Depth	Type Of Cement	Number of Sacks Used	Type and Percent Additives
Conductor	16	14	46	71	Grout	60	
Surface	12.250	9.625	36	1365	Standard	590	2%CaCl +.25#poly- e-flake
Intermedia te	8.750	7	26	4696	Standard	270	.25# poly- e-flake
Liner	6.125	4.5	14	8562	Standard	470	.25# poly- e-flake

# HALLIBURTON

# Cementing Job Summary

The Road to Excellence Starts with Safety

Sold To #: 340078	Ship To #: 2942664	Quote #:	Sales Order #: 9706321
Customer: ENCANA OIL & GAS (USA) INC. - EBUS		Customer Rep: McNabb, Randy	
Well Name: J & A Associates		Well #: 11H-1	API/UWI #:
Field:	City (SAP): NESS CITY	County/Parish: Ness	State: Kansas
Contractor: Precision		Rig/Platform Name/Num: 209	
Job Purpose: Cement Surface Casing			
Well Type: Development Well		Job Type: Cement Surface Casing	
Sales Person: DAIGLE, COLTER		Srvc Supervisor: RODRIGUEZ, EDGAR MBU ID Emp #: 442125	

### Job Personnel

HES Emp Name	Exp Hrs	Emp #	HES Emp Name	Exp Hrs	Emp #	HES Emp Name	Exp Hrs	Emp #
ALVAREZ, JEREMIAH Nathan	3	489450	RAMIREZ, JORGE	6	-	RODRIGUEZ, EDGAR Alejandro	6	442125
SWAIN, KIRK	3	-	TORRES, CLEMENTE	6	344233			

### Equipment

HES Unit #	Distance-1 way	HES Unit #	Distance-1 way	HES Unit #	Distance-1 way	HES Unit #	Distance-1 way

### Job Hours

Date	On Location Hours	Operating Hours	Date	On Location Hours	Operating Hours	Date	On Location Hours	Operating Hours
7/30/2012	1	1	7/31/2012	5	2			
TOTAL			Total is the sum of each column separately					

### Job

### Job Times

Formation Name	Formation Depth (MD)	Top	Bottom	Called Out	Date	Time	Time Zone
					30 - Jul - 2012	17:00	CST
Form Type			BHST	On Location	30 - Jul - 2012	22:20	CST
Job depth MD	1365. ft		Job Depth TVD	1366. ft	Job Started	31 - Jul - 2012	02:39
Water Depth			Wk Ht Above Floor	5. ft	Job Completed	31 - Jul - 2012	03:51
Perforation Depth (MD) From			To		Departed Loc	31 - Jul - 2012	05:15

### Well Data

Description	New / Used	Max pressure psig	Size in	ID in	Weight lbm/ft	Thread	Grade	Top MD ft	Bottom MD ft	Top TVD ft	Bottom TVD ft
Surface Casing Open Hole				12.25				40.	1400.		
Preset Conductor	Unknown		13.375	12.415	68.			.	40.		
Surface Casing	Unknown		9.625	8.921	36.			.	1400.		

### Sales/Rental/3<sup>rd</sup> Party (HES)

Description	Qty	Qty uom	Depth	Supplier
PLUG,CMTG, TOP, 9 5/8, HWE, 8.16 MIN/9.06 MA	1	EA		

### Tools and Accessories

Type	Size	Qty	Make	Depth	Type	Size	Qty	Make	Depth	Type	Size	Qty	Make
Guide Shoe					Packer					Top Plug	9 5/8	1	HES
Float Shoe					Bridge Plug					Bottom Plug			
Float Collar					Retainer					SSR plug set			
Insert Float										Plug Container	9 5/8	1	HES
Stage Tool										Centralizers			

### Miscellaneous Materials

Gelling Agt	Conc	Surfactant	Conc	Acid Type	Qty	Conc	%
Treatment Fld	Conc	Inhibitor	Conc	Sand Type	Size	Qty	

### Fluid Data

Stage/Plug #: 1

# HALLIBURTON

## Cementing Job Summary

Fluid #	Stage Type	Fluid Name	Qty	Qty uom	Mixing Density lbm/gal	Yield ft <sup>3</sup> /sk	Mix Fluid Gal/sk	Rate bbl/min	Total Mix Fluid Gal/sk
1	ExtendaCem	EXTENDACEM (TM) SYSTEM (452981)	440.0	sacks	12.4	2.1	11.61		11.61
	2 %	CALCIUM CHLORIDE, PELLET, 50 LB (101509387)							
	0.25 lbm	POLY-E-FLAKE (101216940)							
	11.607 Gal	FRESH WATER							
2	HalCem	HALCEM (TM) SYSTEM (452986)	150.0	sacks	15.6	1.2	5.32		5.32
	2 %	CALCIUM CHLORIDE, PELLET, 50 LB (101509387)							
	0.125 lbm	POLY-E-FLAKE (101216940)							
	5.319 Gal	FRESH WATER							
3	Displacement (TBC)		102	bbl	.	.0	.0	.0	
<b>Calculated Values</b>			<b>Pressures</b>			<b>Volumes</b>			
Displacement	102	Shut In: Instant		Lost Returns		Cement Slurry	197	Pad	
Top Of Cement	SURFACE	5 Min		Cement Returns	120	Actual Displacement	102	Treatment	
Frac Gradient		15 Min		Spacers	10	Load and Breakdown		Total Job	309
<b>Rates</b>									
Circulating		Mixing		Displacement		Avg. Job			
Cement Left In Pipe	Amount	38 ft	Reason	Shoe Joint					
Frac Ring # 1 @	ID	Frac ring # 2 @	ID	Frac Ring # 3 @	ID	Frac Ring # 4 @	ID		
The Information Stated Herein Is Correct				Customer Representative Signature <i>Randy McNeil</i>					

# HALLIBURTON

## Cementing Job Log

The Road to Excellence Starts with Safety

Sold To #: 340078	Ship To #: 2942664	Quote #:	Sales Order #: 9706321
Customer: ENCANA OIL & GAS (USA) INC. - EBUS		Customer Rep: McNabb, Randy	
Well Name: J & A Associates	Well #: 11H-1	API/UWI #:	
Field:	City (SAP): NESS CITY	County/Parish: Ness	State: Kansas
Legal Description:			
Lat:		Long:	
Contractor: Precision		Rig/Platform Name/Num: 209	
Job Purpose: Cement Surface Casing			Ticket Amount:
Well Type: Development Well		Job Type: Cement Surface Casing	
Sales Person: DAIGLE, COLTER		Srcv Supervisor: RODRIGUEZ, EDGAR MBU ID Emp #: 442125	

Activity Description	Date/Time	Cht #	Rate bbl/min	Volume bbl		Pressure psig		Comments
				Stage	Total	Tubing	Casing	
Call Out	07/30/2012 17:00							DISPATCH CALLED CEMENT CREW OUT FOR JOB. ENCANA OIL & GAS J & A ASSOCIATES #11H-1 9 5/8 SURFACE CASING
Other	07/30/2012 18:00							LOAD EQUIPMENT
Depart Yard Safety Meeting	07/30/2012 19:00							DISCUSSED ALL ROUTES TO TAKE AND THE POSSIBLE HAZARDS ON THE ROAD. DISCUSSED ALL PLANNED STOPS.
Crew Leave Yard	07/30/2012 19:10							
Arrive At Loc	07/30/2012 22:20							
Assessment Of Location Safety Meeting	07/30/2012 22:25							RUNNING CASING. LET CUSTOMER REP KNOW THAT BULK DRIVERS COMING OUT OF PAMPA WILL BE LATE. GOT NUMBERS FROM CUSTOMER REP. TP=9 5/8 36# K-55 1365.35' OH=12 1/4 @1366' SJ=38.95'
Pre-Rig Up Safety Meeting	07/30/2012 22:30							WENT OVER JSA TO DISCUSS ALL RED ZONES. WHERE TO SPOT EQUIPMENT AND RUN LINES. HAVE SPOTTER AT ALL TIMES

Sold To #: 340078

Ship To #: 2942664

Quote #:

Sales Order #: 9706321

SUMMIT Version: 7.3.0039

Tuesday, July 31, 2012 05:07:00

# HALLIBURTON

## Cementing Job Log

Activity Description	Date/Time	Cht #	Rate bbl/ min	Volume bbl		Pressure psig		Comments
				Stage	Total	Tubing	Casing	
Rig-Up Equipment	07/30/2012 22:40							
Rig-Up Completed	07/30/2012 23:40							
Assessment Of Location Safety Meeting	07/30/2012 23:45							RUNNING CASING
Casing on Bottom	07/31/2012 00:09							WILL CIRCULATE WHILE WE WAIT FOR BULK TO GET HERE. CUSTOMER REP IS AWARE.
Rig-Up Equipment	07/31/2012 00:50							RIG UP IRON ON FLOOR.
Wait on HES Materials to Arrive - End Time	07/31/2012 02:20							BULK GOT HERE. RIG UP TO PUMP TRUCK
Pre-Job Safety Meeting	07/31/2012 02:27							DISCUSSED HAZARDS, JOB STEPS WITH ALL ON LOCATION. WENT OVER NUMBERS, PUMPING RATES, AND PRESSURES WITH CUSTOMER REP. HAD EVERYBODY INVOLVED SIGN HES SAFETY SHEET.
Start Job	07/31/2012 02:39							
Test Lines	07/31/2012 02:39						2500. 0	PRESSURE TEST TO 2500 PSI.
Pump Spacer 1	07/31/2012 02:41		2	10			43.0	FRESH WATER
Pump Lead Cement	07/31/2012 02:44		5	165			119.0	440 SKS HLC STANDARD CMT @12.4 (165 BBLs)
Pump Tail Cement	07/31/2012 03:17		4.5	32			179.0	150 SKS STANDARD CLASS CMT @15.6 (32 BBLs)
Cement Returns to Surface	07/31/2012 03:19							120 BBLs OF CMT RETURNS
Shutdown	07/31/2012 03:24							
Drop Plug	07/31/2012 03:25							9 5/8 HWE TOP PLUG
Pump Displacement	07/31/2012 03:26		6	82	82		55.0	FRESH WATER
Slow Rate	07/31/2012 03:41		2	10	92		381.0	SLOW TO 3 BPM TO BUMP PLUG

Sold To # : 340078

Ship To # :2942664

Quote # :

Sales Order # : 9706321

SUMMIT Version: 7.3.0039

Tuesday, July 31, 2012 05:07:00



# HALLIBURTON

## Cementing Job Log

Activity Description	Date/Time	Cht #	Rate bbl/min	Volume bbl		Pressure psig		Comments
				Stage	Total	Tubing	Casing	
Bump Plug	07/31/2012 03:47		2	10	102		437.0	BUMP PLUG 500 PSI OVER. FINAL PRESSURE WAS 991 PSI
Check Floats	07/31/2012 03:50							FLOATS HELD. 1/2 BBL BACK
End Job	07/31/2012 03:51							
Pre-Rig Down Safety Meeting	07/31/2012 03:52							DISCUSSED ALL RED ZONES. PROPER LIFTING. SPOTTING EQUIPMENT OUT OF LOCATION
Rig-Down Equipment	07/31/2012 04:02							
Rig-Down Completed	07/31/2012 05:02							
Depart Location Safety Meeting	07/31/2012 05:05							DISCUSSED ALL ROUTES AND POTENTIAL HAZARDS ON THE WAY BACK TO THE YARD.
Crew Leave Location	07/31/2012 05:15							THANK YOU EDGAR A. RODRIGUEZ AND HALLIBURTON CREW.

Sold To #: 340078

Ship To #: 2942664

Quote #:

Sales Order #:

9706321

SUMMIT Version: 7.3.0039

Tuesday, July 31, 2012 05:07:00

# HALLIBURTON

## Work Order Contract

Order Number

9706321

TO: HALLIBURTON ENERGY SERVICES, INC. - YOU ARE HEREBY REQUESTED TO FURNISH EQUIPMENT AND SERVICE PERSONNEL TO DELIVER AND OPERATE THE SAME AS AN INDEPENDENT CONTRACTOR TO CUSTOMER LISTED BELOW AND DELIVER AND SELL PRODUCTS, SUPPLIES AND MATERIALS FOR THE PURPOSE OF SERVICING:

Well No.	Farm or Lease	County	State	Well Permit Number
11H-1	J & A Associates	Ness	Kansas	
Customer		Well Owner	Job Purpose	
ENCANA OIL & GAS (USA) INC. - EBUS			Cement Surface Casing	

THIS WORK ORDER MUST BE SIGNED BEFORE WORK IS COMMENCED

A. CUSTOMER REPRESENTATION - Customer warrants that the well is in proper condition to receive the services, equipment, products, and materials to be supplied by Halliburton Energy Services, Inc. (hereinafter "Halliburton").

B. PRICE AND PAYMENT - The services, equipment, products, and/or materials to be supplied hereunder are priced in accordance with Halliburton's current price list. All prices of Halliburton are exclusive of any federal, state or municipal taxes which may be imposed on the sale or use of any materials, products or supplies furnished or services performed. Customer agrees to pay such taxes in addition to the prices in Halliburton's price list. If Customer does not have an approved open account with Halliburton, all sums due are payable in cash at the time of performance of services or delivery of equipment, products or materials. If Customer has an approved open account, invoices are payable on the twentieth day after the date of invoice. Customer agrees to pay interest on any unpaid balance from the date payable until paid at the highest lawful contract rate applicable, but never to exceed 18% per annum. In the event Halliburton employs an attorney for collection of any account, Customer agrees to pay attorney fees of 20% of the unpaid account, or Halliburton's actual attorney fees, whichever is greater, plus all collection and court costs. Customer agrees that the amount of attorney fees set out herein are reasonable and necessary.

C. RELEASE AND INDEMNITY - Customer agrees to RELEASE Halliburton Group from any and all liability for any and all damages whatsoever to property of any kind owned by, in the possession of, or leased by Customer and those persons and entities Customer has the ability to bind by contract or which are co-interest owners or joint ventures with Customer. Customer also agrees to DEFEND, INDEMNIFY, AND HOLD Halliburton Group HARMLESS from and against any and all liability, claims, costs, expenses, attorney fees and damages whatsoever for personal injury, illness, death, property damage and loss resulting from loss of well control; services to control a wild well whether underground or above the surface; reservoir or underground damage, including loss of oil, gas, other mineral substances or water; surface damage arising from underground damage; damage to or loss of the well bore; subsurface trespass or any action in the nature thereof; fire; explosion; subsurface pressure; radioactivity; and pollution and contamination and its cleanup and control.

CUSTOMER'S RELEASE, DEFENSE, INDEMNITY AND HOLD HARMLESS obligations will apply even if the liability and claims are caused by the sole, concurrent, active or passive negligence, fault, or strict liability of one or more members of the Halliburton Group, the unseaworthiness of any vessel or any defect in the data, products, supplies, materials or equipment furnished by any member or members of the Halliburton Group whether in the design, manufacture, maintenance or marketing thereof or from a failure to warn of such defect. "Halliburton Group" is defined as Halliburton Energy Services, Inc., its parent, subsidiary, and affiliated companies, insurers and subcontractors and all its/their officers, directors, employees, consultants and agents. Customer's RELEASE, DEFENSE, INDEMNITY AND HOLD HARMLESS obligations apply whether the personal injury, illness, death, property damage or loss is suffered by one or more members of the Halliburton Group, Customer, or any other person or entity. Customer agrees to support such obligations assumed herein with liability insurance with limits of not less than \$500,000. Customer agrees to name Halliburton Group as named additional insured on all of its general liability policy(s). Customer agrees that its liability under this Contract is not limited by the amounts of its insurance coverage, except where and as may be required by applicable local law for the provisions of this Contract to be enforceable.

D. EQUIPMENT LIABILITY - Customer shall at its risk and expense attempt to recover any Halliburton Group equipment lost or lodged in the well. If the equipment is recovered and repairable, Customer shall pay the repair costs, unless caused by Halliburton's sole negligence. If the equipment is not recovered or is irreparable, Customer shall pay the current published replacement rate, unless caused by Halliburton's sole negligence. If a radioactive source becomes lost or lodged in the well, Customer shall meet all requirements of Section 39.15(a) of the Nuclear Regulatory Commission regulations and any other applicable laws or regulations concerning retrieval or abandonment and shall permit Halliburton to monitor the recovery or abandonment efforts all at no risk or liability to Halliburton Group. Customer shall be responsible for damage to or loss of Halliburton group equipment, products, and materials while in transit aboard Customer-supplied transportation, even if such is arranged by Halliburton at Customer's request, and during loading and unloading from such transport. Customer will also pay for the repair or replacement of Halliburton group equipment damaged by corrosion or abrasion due to well effluents.

E. LIMITED WARRANTY - Halliburton warrants only title to the equipment, products, and materials supplied under this Contract and that same are free from defects in workmanship and materials for thirty (30) days from the date of delivery. **THERE ARE NO WARRANTIES, EXPRESS OR IMPLIED, OF MERCHANTABILITY, FITNESS OR OTHERWISE BEYOND THOSE STATED IN THE IMMEDIATELY PRECEDING SENTENCE.** Halliburton's sole liability and Customer's exclusive remedy in any cause of action (whether in contract, tort, breach of warranty or otherwise) arising out of the sale, lease or use of any equipment, products, or materials is expressly limited to the replacement of such on their return to Halliburton or, at Halliburton's option, to the allowance to Customer of credit for the cost of such items. In no event shall Halliburton be liable for special, incidental, indirect, consequential, or punitive damages. Because of the uncertainty of variable well conditions and the necessity of relying on facts and supporting services furnished by others, **HALLIBURTON IS UNABLE TO GUARANTEE THE EFFECTIVENESS OF THE EQUIPMENT, MATERIALS, OR SERVICE, NOR THE ACCURACY OF ANY CHART INTERPRETATION, RESEARCH ANALYSIS, JOB RECOMMENDATION OR OTHER DATA FURNISHED BY HALLIBURTON GROUP.** Halliburton personnel will use their best efforts in gathering such information and their best judgment in interpreting it, but Customer agrees that Halliburton Group shall not be liable for and **CUSTOMER SHALL INDEMNIFY HALLIBURTON GROUP AGAINST ANY DAMAGES ARISING FROM THE USE OF SUCH INFORMATION, even if such is contributed to or caused by the active or passive negligence, fault or strict liability of any member or members of Halliburton Group.** Halliburton also does not warrant the accuracy of data transmitted by electronic process, and Halliburton will not be responsible for accidental or intentional interception of such data by third parties.

F. GOVERNING LAW - The validity, interpretation and construction of this Contract shall be determined by the laws of the jurisdiction where the services are performed or the equipment or materials are delivered.

G. DISPUTE RESOLUTION Except for Halliburton's statutory rights with regard to collection of past due invoices for services or materials, including the Contractor's statutory rights for perfection and enforcement of mechanics' and materialmen's liens, Customer and Halliburton agree that any dispute that may arise out of the performance of this Contract shall be resolved by binding arbitration by a panel of three arbitrators under the rules of the American Arbitration Association. The arbitration will take place in Houston, TX.

H. SEVERABILITY - If any provision or part thereof of this Contract shall be held to be invalid, void, or of no effect for any reason, such holding shall not be deemed to affect the validity of the remaining provisions of this Contract which can be given effect, without the invalid provision or part thereof, and to this end, the provisions of this Contract are declared to be severable. Customer and Halliburton agree that any provision of this Contract that is unenforceable or void under applicable law will be modified to achieve the intent of the parties hereunder to the greatest extent allowed by applicable law.

I. MODIFICATIONS - Customer agrees that Halliburton shall not be bound by any modifications to this Contract, except where such modification is made in writing by a duly authorized executive officer of Halliburton. Requests for modifications should be directed to the Vice President - Legal, 10200 Bellaire Blvd, Houston, TX 77072-5299.

**I HAVE READ AND UNDERSTAND THIS WORK ORDER CONTRACT WHICH CONTAINS RELEASE AND INDEMNITY LANGUAGE WHICH CUSTOMER ACKNOWLEDGES IS CONSPICUOUS AND AFFORDS FAIR AND ADEQUATE NOTICE AND I REPRESENT THAT I AM AUTHORIZED TO SIGN THE SAME AS CUSTOMER'S AGENT. I AM SIGNING THIS WORK ORDER CONTRACT WITH THE UNDERSTANDING THAT ITS TERMS AND CONDITIONS WILL NOT APPLY TO THE EXTENT THEY CONFLICT WITH TERMS AND CONDITIONS OF A SIGNED MASTER SERVICE CONTRACT BETWEEN THE PARTIES.**

### Customer Acceptance of Terms and Conditions, Materials and Services

  
CUSTOMER Authorized Signatory

7/30/2012

Date

The Road to Excellence Starts with Safety

Sold To #: 340078	Ship To #: 2942664	Quote #:	Sales Order #: 9719983
Customer: ENCANA OIL & GAS (USA) INC. - EBUS		Customer Rep: McNabb, Randy	
Well Name: J&A Associates 11H	Well #: 1	API/UWI #: 1513525431	
Field:	City (SAP): NESS CITY	County/Parish: Ness	State: Kansas
Legal Description: Section 11 Township 18S Range 21W			
Contractor: Precision		Rig/Platform Name/Num: 209	
Job Purpose: Cement Intermediate Casing			
Well Type: Development Well		Job Type: Cement Intermediate Casing	
Sales Person: DAIGLE, COLTER		Srcv Supervisor: GALVAN, GEORGE MBU ID Emp #: 447816	

### Job Personnel

HES Emp Name	Exp Hrs	Emp #	HES Emp Name	Exp Hrs	Emp #	HES Emp Name	Exp Hrs	Emp #
BECERRA, JUAN Carlos	7.8	491933	GALVAN, GEORGE	7.8	447816	NORTON, BRUCE Wayne	7.8	499926

### Equipment

HES Unit #	Distance-1 way	HES Unit #	Distance-1 way	HES Unit #	Distance-1 way	HES Unit #	Distance-1 way

### Job Hours

Date	On Location Hours	Operating Hours	Date	On Location Hours	Operating Hours	Date	On Location Hours	Operating Hours
08-04-2012	2	0	08-05-2012	5.5				
TOTAL			Total is the sum of each column separately					

### Job

### Job Times

Formation Name	Formation Depth (MD) Top	Bottom	Called Out	Date	Time	Time Zone
Form Type		BHST	On Location	04 - Aug - 2012	15:30	CST
Job depth MD	15413.4 m	Job Depth TVD	Job Started	04 - Aug - 2012	22:00	CST
Water Depth		Wk Ht Above Floor	Job Completed	05 - Aug - 2012	02:04	CST
Perforation Depth (MD) From		To	Job Completed	05 - Aug - 2012	03:02	CST
			Departed Loc	05 - Aug - 2012	05:45	CST

### Well Data

Description	New / Used	Max pressure MPa	Size mm	ID mm	Weight kg/m	Thread	Grade	Top MD m	Bottom MD m	Top TVD m	Bottom TVD m
Intermediate Open Hole				8.75				1400.	4711.	1400.	4240.
Intermediate Casing	Unknown		7.	6.366	23.		N-80	.	4711.	.	4240.
Surface Casing	Unknown		9.625	8.921	36.			.	1400.		

### Sales/Rental/3<sup>rd</sup> Party (HES)

Description	Qty	Qty uom	Depth	Supplier
PLUG,CMTG, TOP, 7, HWE, 5.66 MIN/6.54 MAX CS	1	EA		

### Tools and Accessories

Type	Size	Qty	Make	Depth	Type	Size	Qty	Make	Depth	Type	Size	Qty	Make
Guide Shoe					Packer					Top Plug			
Float Shoe					Bridge Plug					Bottom Plug			
Float Collar					Retainer					SSR plug set			
Insert Float										Plug Container			
Stage Tool										Centralizers			

### Miscellaneous Materials

Gelling Agt	Conc	Surfactant	Conc	Acid Type	Qty	Conc	%
Treatment Fld	Conc	Inhibitor	Conc	Sand Type	Size	Qty	

### Fluid Data

Stage/Plug #: 1
-----------------

Fluid #	Stage Type	Fluid Name	Qty	Qty uom	Mixing Density kg/m3	Yield m3/sk	Mix Fluid m3/tonne	Rate m3/min	Total Mix Fluid m3/tonne
1	Standard	CMT - STANDARD CEMENT (100003684)	270.0	sacks	15.6	1.18	5.2		5.2
	94 lbm	CMT - STANDARD - CLASS A REG OR TYPE I, BULK (100003684)							
	0.25 lbm	POLY-E-FLAKE (101216940)							
	5.204 Gal	FRESH WATER							
Calculated Values		Pressures		Volumes					
Displacement	178	Shut In: Instant		Lost Returns		Cement Slurry	57	Pad	
Top Of Cement		5 Min		Cement Returns		Actual Displacement	178	Treatment	
Frac Gradient		15 Min		Spacers	10	Load and Breakdown		Total Job	
Rates									
Circulating		Mixing	5	Displacement	5	Avg. Job			5
Cement Left In Pipe	Amount	40 ft	Reason	Shoe Joint					
Frac Ring # 1 @	ID	Frac ring # 2 @	ID	Frac Ring # 3 @	ID	Frac Ring # 4 @	ID		
The Information Stated Herein Is Correct				Customer Representative Signature <i>Randy Mendel</i>					

*The Road to Excellence Starts with Safety*

Sold To #: 340078	Ship To #: 2942664	Quote #:	Sales Order #: 9719983
Customer: ENCANA OIL & GAS (USA) INC. - EBUS		Customer Rep: McNabb, Randy	
Well Name: J&A Associates 11H	Well #: 1	API/UWI #: 1513525431	
Field:	City (SAP): NESS CITY	County/Parish: Ness	State: Kansas
Legal Description: Section 11 Township 18S Range 21W			
Lat: N 0 deg. OR N 0 deg. 0 min. 0 secs.		Long: E 0 deg. OR E 0 deg. 0 min. 0 secs.	
Contractor: Precision		Rig/Platform Name/Num: 209	
Job Purpose: Cement Intermediate Casing			Ticket Amount:
Well Type: Development Well		Job Type: Cement Intermediate Casing	
Sales Person: DAIGLE, COLTER		Srv Supervisor: GALVAN, GEORGE	MBU ID Emp #: 447816

Activity Description	Date/Time	Cht #	Rate m3/min	Volume m3		Pressure MPa		Comments
				Stage	Total	Tubing	Casing	
Call Out	08/04/2012 15:30							CALLED OUT ON 7" INTERMEDIATE ENCANA OIL
Pre-Convoy Safety Meeting	08/04/2012 16:30							DISCUSS ROUTE TO LOCATION
Depart Yard Safety Meeting	08/04/2012 16:40							DEPART FROM HALLIBURTON YARD TO LOCATION
Arrive At Loc	08/04/2012 22:00							ARRIVED ON LOCATION
Pre-Rig Up Safety Meeting	08/04/2012 22:10							DISCUSS RIG UP PROCEDURE AND WHERE SAFETY AREA IS ON LOCATION
Rig-Up Equipment	08/04/2012 22:15							BEGAN RIGGING UP EQUIPMENT
Rig-Up Completed	08/04/2012 23:00							RIG UP COMPLETED
Casing on Bottom	08/05/2012 00:55							CASING ON BOTTOM
Circulate Well	08/05/2012 01:00							CIRCULATING WELL
Safety Meeting	08/05/2012 01:46							DISCUSS JOB PROCEDURE
Start Job	08/05/2012 02:04							START JOB
Test Lines	08/05/2012 02:04						4500.0	TEST LINES 4500 PSI
Pump Spacer	08/05/2012 02:07		3		10		125.0	PUMP FRESHWATER SPACER
Pump Cement	08/05/2012 02:11		5		57		281.0	PUMP CEMENT @ 15.6 PPG
Shutdown	08/05/2012 02:21							SHUTDOWN WAS UP TUB
Drop Top Plug	08/05/2012 02:21							DROP TOP PLUG

Activity Description	Date/Time	Cht #	Rate m3/min	Volume m3		Pressure MPa		Comments
				Stage	Total	Tubing	Casing	
Pump Displacement	08/05/2012 02:22		6		178		35.0	PUMP FRESHWATER DISPLACEMENT
Displ Reached Cmnt	08/05/2012 02:41		6		65		100.0	DISPLACEMENT REACH CEMENT
Slow Rate	08/05/2012 02:55		3.5		155		733.0	SLOW RATE TO BUMP PLUG
Slow Rate	08/05/2012 02:59		3		165		800.0	SLOW RATE TO BUMP PLUG
Bump Plug	08/05/2012 03:02		3		178		1750.0	BUMP PLUG @ 1720PSI
Check Floats	08/05/2012 03:05				1			CHECK FLOATS GOT BACK 1BBL
End Job	08/05/2012 04:00							END JOB
Post-Job Safety Meeting (Pre Rig-Down)	08/05/2012 04:20							DISCUSS RIG DOWN PROCEDURE
Rig-Down Equipment	08/05/2012 04:30							BEGAN RIGGING DOWN EQUIPMENT
Rig-Down Completed	08/05/2012 05:30							ALL IRON BACK ON TRUCKS
Pre-Convoy Safety Meeting	08/05/2012 05:40							DISCUSS ROUTE BACK TO HALLIBURTON FACILITY
Depart Location Safety Meeting	08/05/2012 05:45							THANK YOU FOR USING HALLIBURTON AND CREW

## Work Order Contract

Order Number

9719983

TO: HALLIBURTON ENERGY SERVICES, INC. - YOU ARE HEREBY REQUESTED TO FURNISH EQUIPMENT AND SERVICE PERSONNEL TO DELIVER AND OPERATE THE SAME AS AN INDEPENDENT CONTRACTOR TO CUSTOMER LISTED BELOW AND DELIVER AND SELL PRODUCTS, SUPPLIES AND MATERIALS FOR THE PURPOSE OF SERVICING:

Well No.	Farm or Lease	County	State	Well Permit Number
1	J&A Associates 11H	Ness	Kansas	1513525431
Customer ENCANA OIL & GAS (USA) INC. - EBUS		Well Owner	Job Purpose Cement Intermediate Casing	

**THIS WORK ORDER MUST BE SIGNED BEFORE WORK IS COMMENCED**

A. **CUSTOMER REPRESENTATION** - Customer warrants that the well is in proper condition to receive the services, equipment, products, and materials to be supplied by Halliburton Energy Services, Inc. (hereinafter "Halliburton").

B. **PRICE AND PAYMENT** - The services, equipment, products, and/or materials to be supplied hereunder are priced in accordance with Halliburton's current price list. All prices of Halliburton are exclusive of any federal, state or municipal taxes which may be imposed on the sale or use of any materials, products or supplies furnished or services performed. Customer agrees to pay such taxes in addition to the prices in Halliburton's price list. If Customer does not have an approved open account with Halliburton, all sums due are payable in cash at the time of performance of services or delivery of equipment, products or materials. If Customer has an approved open account, invoices are payable on the twentieth day after the date of invoice. Customer agrees to pay interest on any unpaid balance from the date payable until paid at the highest lawful contract rate applicable, but never to exceed 18% per annum. In the event Halliburton employs an attorney for collection of any account, Customer agrees to pay attorney fees of 20% of the unpaid account, or Halliburton's actual attorney fees, whichever is greater, plus all collection and court costs. Customer agrees that the amount of attorney fees set out herein are reasonable and necessary.

C. **RELEASE AND INDEMNITY** - Customer agrees to **RELEASE** Halliburton Group from any and all liability for any and all damages whatsoever to property of any kind owned by, in the possession of, or leased by Customer and those persons and entities Customer has the ability to bind by contract or which are co-interest owners or joint ventures with Customer. Customer also agrees to **DEFEND, INDEMNIFY, AND HOLD** Halliburton Group **HARMLESS** from and against any and all liability, claims, costs, expenses, attorney fees and damages whatsoever for personal injury, illness, death, property damage and loss resulting from loss of well control, services to control a wild well whether underground or above the surface; reservoir or underground damage, including loss of oil, gas, other mineral substances or water, surface damage arising from underground damage, damage to or loss of the well bore; subsurface trespass or any action in the nature thereof, fire, explosion, subsurface pressure, radioactivity, and pollution and contamination and its cleanup and control.

**CUSTOMER'S RELEASE, DEFENSE, INDEMNITY AND HOLD HARMLESS** obligations will apply even if the liability and claims are caused by the sole, concurrent, active or passive negligence, fault, or strict liability of one or more members of the Halliburton Group, the unseaworthiness of any vessel or any defect in the data, products, supplies, materials or equipment furnished by any member or members of the Halliburton Group whether in the design, manufacture, maintenance or marketing thereof or from a failure to warn of such defect. "Halliburton Group" is defined as Halliburton Energy Services, Inc., its parent, subsidiary, and affiliated companies, insurers and subcontractors and all its/their officers, directors, employees, consultants and agents. **Customer's RELEASE, DEFENSE, INDEMNITY AND HOLD HARMLESS** obligations apply whether the personal injury, illness, death, property damage or loss is suffered by one or more members of the Halliburton Group, Customer, or any other person or entity. Customer agrees to support such obligations assumed herein with liability insurance with limits of not less than \$500,000. Customer agrees to name Halliburton Group as named additional insured on all of its general liability policy(s). Customer agrees that its liability under this Contract is not limited by the amounts of its insurance coverage, except where and as may be required by applicable local law for the provisions of this Contract to be enforceable.

D. **EQUIPMENT LIABILITY** - Customer shall at its risk and expense attempt to recover any Halliburton Group equipment lost or lodged in the well. If the equipment is recovered and repairable, Customer shall pay the repair costs, unless caused by Halliburton's sole negligence. If the equipment is not recovered or is irreparable, Customer shall pay the current published replacement rate, unless caused by Halliburton's sole negligence. If a radioactive source becomes lost or lodged in the well, Customer shall meet all requirements of Section 39.15(a) of the Nuclear Regulatory Commission regulations and any other applicable laws or regulations concerning retrieval or abandonment and shall permit Halliburton to monitor the recovery or abandonment efforts all at no risk or liability to Halliburton Group. Customer shall be responsible for damage to or loss of Halliburton group equipment, products, and materials while in transit aboard Customer-supplied transportation, even if such is arranged by Halliburton at Customer's request, and during loading and unloading from such transport. Customer will also pay for the repair or replacement of Halliburton group equipment damaged by corrosion or abrasion due to well effluents.

E. **LIMITED WARRANTY** - Halliburton warrants only title to the equipment, products, and materials supplied under this Contract and that same are free from defects in workmanship and materials for thirty (30) days from the date of delivery. **THERE ARE NO WARRANTIES, EXPRESS OR IMPLIED, OF MERCHANTABILITY, FITNESS OR OTHERWISE BEYOND THOSE STATED IN THE IMMEDIATELY PRECEDING SENTENCE.** Halliburton's sole liability and Customer's exclusive remedy in any cause of action (whether in contract, tort, breach of warranty or otherwise) arising out of the sale, lease or use of any equipment, products, or materials is expressly limited to the replacement of such on their return to Halliburton or, at Halliburton's option, to the allowance to Customer of credit for the cost of such items. In no event shall Halliburton be liable for special, incidental, indirect, consequential, or punitive damages. Because of the uncertainty of variable well conditions and the necessity of relying on facts and supporting services furnished by others, **HALLIBURTON IS UNABLE TO GUARANTEE THE EFFECTIVENESS OF THE EQUIPMENT, MATERIALS, OR SERVICE, NOR THE ACCURACY OF ANY CHART INTERPRETATION, RESEARCH ANALYSIS, JOB RECOMMENDATION OR OTHER DATA FURNISHED BY HALLIBURTON GROUP.** Halliburton personnel will use their best efforts in gathering such information and their best judgment in interpreting it, but Customer agrees that Halliburton Group shall not be liable for and **CUSTOMER SHALL INDEMNIFY HALLIBURTON GROUP AGAINST ANY DAMAGES ARISING FROM THE USE OF SUCH INFORMATION, even if such is contributed to or caused by the active or passive negligence, fault or strict liability of any member or members of Halliburton Group.** Halliburton also does not warrant the accuracy of data transmitted by electronic process, and Halliburton will not be responsible for accidental or intentional interception of such data by third parties.

F. **GOVERNING LAW** - The validity, interpretation and construction of this Contract shall be determined by the laws of the jurisdiction where the services are performed or the equipment or materials are delivered.

G. **DISPUTE RESOLUTION** Except for Halliburton's statutory rights with regard to collection of past due invoices for services or materials, including the Contractor's statutory rights for perfection and enforcement of mechanics' and materialmen's liens, Customer and Halliburton agree that any dispute that may arise out of the performance of this Contract shall be resolved by binding arbitration by a panel of three arbitrators under the rules of the American Arbitration Association. The arbitration will take place in Houston, TX.

H. **SEVERABILITY** - If any provision or part thereof of this Contract shall be held to be invalid, void, or of no effect for any reason, such holding shall not be deemed to affect the validity of the remaining provisions of this Contract which can be given effect, without the invalid provision or part thereof, and to this end, the provisions of this Contract are declared to be severable. Customer and Halliburton agree that any provision of this Contract that is unenforceable or void under applicable law will be modified to achieve the intent of the parties hereunder to the greatest extent allowed by applicable law.

I. **MODIFICATIONS** - Customer agrees that Halliburton shall not be bound by any modifications to this Contract, except where such modification is made in writing by a duly authorized executive officer of Halliburton. Requests for modifications should be directed to the Vice President - Legal, 10200 Bellaire Blvd, Houston, TX 77072-5299.

**I HAVE READ AND UNDERSTAND THIS WORK ORDER CONTRACT WHICH CONTAINS RELEASE AND INDEMNITY LANGUAGE WHICH CUSTOMER ACKNOWLEDGES IS CONSPICUOUS AND AFFORDS FAIR AND ADEQUATE NOTICE AND I REPRESENT THAT I AM AUTHORIZED TO SIGN THE SAME AS CUSTOMER'S AGENT. I AM SIGNING THIS WORK ORDER CONTRACT WITH THE UNDERSTANDING THAT ITS TERMS AND CONDITIONS WILL NOT APPLY TO THE EXTENT THEY CONFLICT WITH TERMS AND CONDITIONS OF A SIGNED MASTER SERVICE CONTRACT BETWEEN THE PARTIES.**

Customer Acceptance of Terms and Conditions, Materials and Services

CUSTOMER Authorized Signatory

8/4/12

Date

The Road to Excellence Starts with Safety

Sold To #: 340078	Ship To #: 2942664	Quote #:	Sales Order #: 9738598
Customer: ENCANA OIL & GAS (USA) INC. - EBUS		Customer Rep: Millins, Greg	
Well Name: J&A Associates 11H	Well #: 1	API/UWI #: 1513525431	
Field:	City (SAP): NESS CITY	County/Parish: Ness	State: Kansas
Legal Description: Section 11 Township 18S Range 21W			
Contractor: Precision		Rig/Platform Name/Num: 209	
Job Purpose: Cement Production Liner			
Well Type: Development Well		Job Type: Cement Production Liner	
Sales Person: DAIGLE, COLTER		Srv Supervisor: RALSTON, ANTHONY	MBU ID Emp #: 448065

### Job Personnel

HES Emp Name	Exp Hrs	Emp #	HES Emp Name	Exp Hrs	Emp #	HES Emp Name	Exp Hrs	Emp #
JOURNAGAN, MICHAEL D	6	524224	LUONG, JOHN M	6	497077	RALSTON, ANTHONY Kenneth	6	448065
REDFEARN, BRADY Tanner	6	497317						

### Equipment

HES Unit #	Distance-1 way	HES Unit #	Distance-1 way	HES Unit #	Distance-1 way	HES Unit #	Distance-1 way

### Job Hours

Date	On Location Hours	Operating Hours	Date	On Location Hours	Operating Hours	Date	On Location Hours	Operating Hours
08/19/2012	6	6						
<b>TOTAL</b>			<i>Total is the sum of each column separately</i>					

### Job

### Job Times

Formation Name	Formation Depth (MD) Top	Bottom	Called Out	Date	Time	Time Zone
Form Type	BHST		On Location			
Job depth MD	8545. ft	Job Depth TVD	8545. ft	Job Started		
Water Depth		Wk Ht Above Floor	25. ft	Job Completed	30 - Jul - 2012	02:00 GMT
Perforation Depth (MD) From		To	Departed Loc			

### Well Data

Description	New / Used	Max pressure psig	Size in	ID in	Weight lbm/ft	Thread	Grade	Top MD ft	Bottom MD ft	Top TVD ft	Bottom TVD ft
Production Liner Open Hole				6.125				4711.	8564.	4240.	4240.
Intermediate Casing	Unknown		7.	6.366	23.		N-80		4711.		4240.
Production Liner	New		4.5	4.	11.6	Unknown		4412.	8541.	4240.	4240.
Drill Pipe	New		3.5	2.992	10.2	Unknown			4412.		

### Tools and Accessories

Type	Size	Qty	Make	Depth	Type	Size	Qty	Make	Depth	Type	Size	Qty	Make
Guide Shoe					Packer					Top Plug	4 1/2	1	Baker
Float Shoe					Bridge Plug					Bottom Plug			
Float Collar					Retainer					SSR plug set			
Insert Float										Plug Container	4 1/2	1	Baker
Stage Tool										Centralizers			


### Miscellaneous Materials

Gelling Agt	Conc	Surfactant	Conc	Acid Type	Qty	Conc	%
Treatment Fld	Conc	Inhibitor	Conc	Sand Type	Size	Qty	

### Fluid Data

Stage/Plug #: 1
-----------------



Fluid #	Stage Type	Fluid Name	Qty	Qty uom	Mixing Density lbm/gal	Yield ft <sup>3</sup> /sk	Mix Fluid Gal/sk	Rate bbl/min	Total Mix Fluid Gal/sk
1	Rig Water		60.00	bbl	8.33	.0	.0	5	
2	EconoCem	ECONOCEM (TM) SYSTEM (452992)	470.0	sacks	13.6	1.53	7.41	5	7.41
	0.4 %	HALAD(R)-9, 50 LB (100001617)							
	0.25 lbm	POLY-E-FLAKE (101216940)							
	2 %	BENTONITE, BULK (100003682)							
	7.41 Gal	FRESH WATER							
3	Fresh Water (TBC)		103	bbl	8.33	.0	.0	5	
Calculated Values		Pressures			Volumes				
Displacement	103	Shut In: Instant		Lost Returns	NO	Cement Slurry	128	Pad	
Top Of Cement	4398	5 Min		Cement Returns	50	Actual Displacement	103	Treatment	
Frac Gradient		15 Min		Spacers	60	Load and Breakdown		Total Job	291
Rates									
Circulating		Mixing	5	Displacement	5	Avg. Job			5
Cement Left In Pipe	Amount	43.86ft	Reason	Shoe Joint					
Frac Ring # 1 @	ID	Frac ring # 2 @	ID	Frac Ring # 3 @	ID	Frac Ring # 4 @	ID		
The Information Stated Herein Is Correct				Customer Representative Signature 					

*The Road to Excellence Starts with Safety*

Sold To #: 340078	Ship To #: 2942664	Quote #:	Sales Order #: 9738598
Customer: ENCANA OIL & GAS (USA) INC. - EBUS		Customer Rep: Millins, Greg	
Well Name: J&A Associates 11H	Well #: 1	API/UWI #: 1513525431	
Field:	City (SAP): NESS CITY	County/Parish: Ness	State: Kansas
Legal Description: Section 11 Township 18S Range 21W			
Lat: N 0 deg. OR N 0 deg. 0 min. 0 secs.		Long: E 0 deg. OR E 0 deg. 0 min. 0 secs.	
Contractor: Precision		Rig/Platform Name/Num: 209	
Job Purpose: Cement Production Liner			Ticket Amount:
Well Type: Development Well		Job Type: Cement Production Liner	
Sales Person: DAIGLE, COLTER		Srvc Supervisor: RALSTON, ANTHONY	MBU ID Emp #: 448065

Activity Description	Date/Time	Cht #	Rate bbl/min	Volume bbl		Pressure psig		Comments
				Stage	Total	Tubing	Casing	
Call Out	08/19/2012 07:30							**MORNING SAFETY MEETING @ 0800**
Pre-Convoy Safety Meeting	08/19/2012 09:20							DISCUSS ROUTES, FOLLOWING DISTANCE, AND COMPLETED JOURNEY MANAGMENT
Depart from Service Center or Other Site	08/19/2012 09:30							
Arrive At Loc	08/19/2012 15:00							ARRIVE ON LOCATION, RIG CIRCULATING
Assessment Of Location Safety Meeting	08/19/2012 15:05							ASSESS AND SPOT EQUIPMENT
Pre-Rig Up Safety Meeting	08/19/2012 15:10							DISCUSS PINCH POINTS, RED ZONE, TRIPPING HAZARDS, AND PPE; TOOK PART IN CUSTOMER SAFETY ORIENTATION
Pre-Job Safety Meeting	08/19/2012 17:00							DISCUSS RATES/PRESSURES/E MERGENCY PLAN/LEAKS AND HSE STANDARDS
Rig-Up Completed	08/19/2012 17:20							
Test Lines	08/19/2012 17:36							TEST LINES 6000 PSI, SMALL LEAK, SHUT DOWN BLED OF PRESSURE AND FIXED, RETESTED, TESTED GOOD.

## Cementing Job Log

Activity Description	Date/Time	Cht #	Rate bbl/min	Volume bbl		Pressure psig		Comments
				Stage	Total	Tubing	Casing	
Pump Water	08/19/2012 17:42		5	60			500.0	PUMP 60 BBLS FRESH WATER SPACER
Pump Lead Cement	08/19/2012 17:57		5	128			650.0	PUMP 128 BBLS LEAD CMT, 13.6 PPG
Shutdown	08/19/2012 18:20							SHUT DOWN, WASH PUMPS AND LINES
Drop Plug	08/19/2012 18:25							3RD PARTY DROPPED TOP PLUG FOR LINER "BAKER"
Pump Displacement	08/19/2012 18:28		5	103			120.0	PUMP 103 BBLS FRESH WATER DISPLACEMENT; SLOWED TO 2.5 @ 35 BBLS GONE, PRESSURES UP TO 1600 FOR PLUG, THEN PUSHES PLUG THROUGH TOOL, PRESSURE RETURNS TO 900 PSI
Displ Reached Cmnt	08/19/2012 18:33							DISPLACEMENT REACHES CMT @ 25 BBLS, PRESSURE TO 800 PSI
Bump Plug	08/19/2012 18:53							BUMP PLUG 800 PSI, TOOK PRESSURE TO 4K TO SET LINER
Check Floats	08/19/2012 19:00							FLOATS HELD; 1.5 BBLS BACK
Other	08/19/2012 19:05							RIG CIRCULATE WELL CLEAN, 50BBLS CMT BACK
Pre-Rig Down Safety Meeting	08/19/2012 19:10							DISCUSS PINCH POINTS, TRIPPING HAZARDS, PPE, WATER BREAKS AND FORKLIFT SAFETY
Rig-Down Completed	08/19/2012 20:35							
Pre-Convoy Safety Meeting	08/19/2012 20:45							DISCUSS ROUTES, HOURS OF SERVICE, WILDLIFE, FOLLOWING DISTANCE, USED JOURNEY MANAGEMENT
Activity Description	Date/Time	Cht	Rate bbl/min	Volume bbl		Pressure psig		Comments

Sold To # : 340078

Ship To # : 2942664

Quote # :

Sales Order # : 9738598

QUANTITY: 7.0000

DATE: 08/19/2012 08:00:00

		#		Stage	Total	Tubing	Casing	
Depart Location for Service Center or Other Site	08/19/2012 21:00							THANK YOU FOR CHOOSING HALLIBURTON ENERGY SERVICES!!

## Work Order Contract

Order Number

9738598

TO: HALLIBURTON ENERGY SERVICES, INC. - YOU ARE HEREBY REQUESTED TO FURNISH EQUIPMENT AND SERVICE PERSONNEL TO DELIVER AND OPERATE THE SAME AS AN INDEPENDENT CONTRACTOR TO CUSTOMER LISTED BELOW AND DELIVER AND SELL PRODUCTS, SUPPLIES AND MATERIALS FOR THE PURPOSE OF SERVICING:

Well No.	Farm or Lease	County	State	Well Permit Number
1	J&A Associates 11H	Ness	Kansas	1513525431
Customer ENCANA OIL & GAS (USA) INC. - EBUS		Well Owner	Job Purpose Cement Production Liner	

THIS WORK ORDER MUST BE SIGNED BEFORE WORK IS COMMENCED

A. CUSTOMER REPRESENTATION - Customer warrants that the well is in proper condition to receive the services, equipment, products, and materials to be supplied by Halliburton Energy Services, Inc. (hereinafter "Halliburton").

B. PRICE AND PAYMENT - The services, equipment, products, and/or materials to be supplied hereunder are priced in accordance with Halliburton's current price list. All prices of Halliburton are exclusive of any federal, state or municipal taxes which may be imposed on the sale or use of any materials, products or supplies furnished or services performed. Customer agrees to pay such taxes in addition to the prices in Halliburton's price list. If Customer does not have an approved open account with Halliburton, all sums due are payable in cash at the time of performance of services or delivery of equipment, products or materials. If Customer has an approved open account, invoices are payable on the twentieth day after the date of invoice. Customer agrees to pay interest on any unpaid balance from the date payable until paid at the highest lawful contract rate applicable, but never to exceed 18% per annum. In the event Halliburton employs an attorney for collection of any account, Customer agrees to pay attorney fees of 20% of the unpaid account, or Halliburton's actual attorney fees, whichever is greater, plus all collection and court costs. Customer agrees that the amount of attorney fees set out herein are reasonable and necessary.

C. RELEASE AND INDEMNITY - Customer agrees to RELEASE Halliburton Group from any and all liability for any and all damages whatsoever to property of any kind owned by, in the possession of, or leased by Customer and those persons and entities Customer has the ability to bind by contract or which are co-interest owners or joint ventures with Customer. Customer also agrees to DEFEND, INDEMNIFY, AND HOLD HARMLESS Halliburton Group HARMLESS from and against any and all liability, claims, costs, expenses, attorney fees and damages whatsoever for personal injury, illness, death, property damage and loss resulting from loss of well control; services to control a wild well whether underground or above the surface; reservoir or underground damage, including loss of oil, gas, other mineral substances or water; surface damage arising from underground damage; damage to or loss of the well bore; subsurface trespass or any action in the nature thereof; fire; explosion; subsurface pressure; radioactivity; and pollution and contamination and its cleanup and control.

CUSTOMER'S RELEASE, DEFENSE, INDEMNITY AND HOLD HARMLESS obligations will apply even if the liability and claims are caused by the sole, concurrent, active or passive negligence, fault, or strict liability of one or more members of the Halliburton Group, the unseaworthiness of any vessel or any defect in the data, products, supplies, materials or equipment furnished by any member or members of the Halliburton Group whether in the design, manufacture, maintenance or marketing thereof or from a failure to warn of such defect. "Halliburton Group" is defined as Halliburton Energy Services, Inc., its parent, subsidiary, and affiliated companies, insurers and subcontractors and all its/their officers, directors, employees, consultants and agents. Customer's RELEASE, DEFENSE, INDEMNITY AND HOLD HARMLESS obligations apply whether the personal injury, illness, death, property damage or loss is suffered by one or more members of the Halliburton Group, Customer, or any other person or entity. Customer agrees to support such obligations assumed herein with liability insurance with limits of not less than \$500,000. Customer agrees to name Halliburton Group as named additional insured on all of its general liability policy(s). Customer agrees that its liability under this Contract is not limited by the amounts of its insurance coverage, except where and as may be required by applicable local law for the provisions of this Contract to be enforceable.

D. EQUIPMENT LIABILITY - Customer shall at its risk and expense attempt to recover any Halliburton Group equipment lost or lodged in the well. If the equipment is recovered and repairable, Customer shall pay the repair costs, unless caused by Halliburton's sole negligence. If the equipment is not recovered or is irreparable, Customer shall pay the current published replacement rate, unless caused by Halliburton's sole negligence. If a radioactive source becomes lost or lodged in the well, Customer shall meet all requirements of Section 39.15(a) of the Nuclear Regulatory Commission regulations and any other applicable laws or regulations concerning retrieval or abandonment and shall permit Halliburton to monitor the recovery or abandonment efforts all at no risk or liability to Halliburton Group. Customer shall be responsible for damage to or loss of Halliburton group equipment, products, and materials while in transit aboard Customer-supplied transportation, even if such is arranged by Halliburton at Customer's request, and during loading and unloading from such transport. Customer will also pay for the repair or replacement of Halliburton group equipment damaged by corrosion or abrasion due to well effluents.

E. LIMITED WARRANTY - Halliburton warrants only title to the equipment, products, and materials supplied under this Contract and that same are free from defects in workmanship and materials for thirty (30) days from the date of delivery. **THERE ARE NO WARRANTIES, EXPRESS OR IMPLIED, OF MERCHANTABILITY, FITNESS OR OTHERWISE BEYOND THOSE STATED IN THE IMMEDIATELY PRECEDING SENTENCE.** Halliburton's sole liability and Customer's exclusive remedy in any cause of action (whether in contract, tort, breach of warranty or otherwise) arising out of the sale, lease or use of any equipment, products, or materials is expressly limited to the replacement of such on their return to Halliburton or, at Halliburton's option, to the allowance to Customer of credit for the cost of such items. In no event shall Halliburton be liable for special, incidental, indirect, consequential, or punitive damages. Because of the uncertainty of variable well conditions and the necessity of relying on facts and supporting services furnished by others, **HALLIBURTON IS UNABLE TO GUARANTEE THE EFFECTIVENESS OF THE EQUIPMENT, MATERIALS, OR SERVICE, NOR THE ACCURACY OF ANY CHART INTERPRETATION, RESEARCH ANALYSIS, JOB RECOMMENDATION OR OTHER DATA FURNISHED BY HALLIBURTON GROUP.** Halliburton personnel will use their best efforts in gathering such information and their best judgment in interpreting it, but Customer agrees that Halliburton Group shall not be liable for and **CUSTOMER SHALL INDEMNIFY HALLIBURTON GROUP AGAINST ANY DAMAGES ARISING FROM THE USE OF SUCH INFORMATION, even if such is contributed to or caused by the active or passive negligence, fault or strict liability of any member or members of Halliburton Group.** Halliburton also does not warrant the accuracy of data transmitted by electronic process, and Halliburton will not be responsible for accidental or intentional interception of such data by third parties.

F. GOVERNING LAW - The validity, interpretation and construction of this Contract shall be determined by the laws of the jurisdiction where the services are performed or the equipment or materials are delivered.

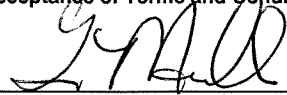
G. DISPUTE RESOLUTION Except for Halliburton's statutory rights with regard to collection of past due invoices for services or materials, including the Contractor's statutory rights for perfection and enforcement of mechanics' and materialmen's liens, Customer and Halliburton agree that any dispute that may arise out of the performance of this Contract shall be resolved by binding arbitration by a panel of three arbitrators under the rules of the American Arbitration Association. The arbitration will take place in Houston, TX.

H. SEVERABILITY - If any provision or part thereof of this Contract shall be held to be invalid, void, or of no effect for any reason, such holding shall not be deemed to affect the validity of the remaining provisions of this Contract which can be given effect, without the invalid provision or part thereof, and to this end, the provisions of this Contract are declared to be severable. Customer and Halliburton agree that any provision of this Contract that is unenforceable or void under applicable law will be modified to achieve the intent of the parties hereunder to the greatest extent allowed by applicable law.

I. MODIFICATIONS - Customer agrees that Halliburton shall not be bound by any modifications to this Contract, except where such modification is made in writing by a duly authorized executive officer of Halliburton. Requests for modifications should be directed to the Vice President - Legal, 10200 Bellaire Blvd, Houston, TX 77072-5299.

**I HAVE READ AND UNDERSTAND THIS WORK ORDER CONTRACT WHICH CONTAINS RELEASE AND INDEMNITY LANGUAGE WHICH CUSTOMER ACKNOWLEDGES IS CONSPICUOUS AND AFFORDS FAIR AND ADEQUATE NOTICE AND I REPRESENT THAT I AM AUTHORIZED TO SIGN THE SAME AS CUSTOMER'S AGENT. I AM SIGNING THIS WORK ORDER CONTRACT WITH THE UNDERSTANDING THAT ITS TERMS AND CONDITIONS WILL NOT APPLY TO THE EXTENT THEY CONFLICT WITH TERMS AND CONDITIONS OF A SIGNED MASTER SERVICE CONTRACT BETWEEN THE PARTIES.**

Customer Acceptance of Terms and Conditions, Materials and Services



CUSTOMER Authorized Signatory

Date

Encana Oil & Gas  
 Precision 209  
 J & A Associates 1-11H

M.W.D. OPERATOR: Kenney H. / Shawn F..  
 DIRECTIONAL DRILLERS: Richard Snider / Billy Spurgeon

Magnetic Declination:	6.3
Job #:	DR1206099
Vertical Section Azimuth	180.83

Minimum Curvature Calculation

No.	Survey Depth	INC	AZM	TVD	N-S	E-W	Vertical Section	DLS/100
Tie	1355	1.59	81.07	1354.80	0.67	15.02	0.67	0.89
1	1394	1.4	60.3	1393.79	0.99	15.97	-1.22	1.46
2	1485	0.8	77.6	1484.77	1.68	17.55	-1.93	0.75
3	1575	0.7	76.7	1574.76	1.94	18.70	-2.21	0.11
4	1666	0.6	82.8	1665.76	2.13	19.72	-2.41	0.13
5	1756	0.8	102.3	1755.75	2.05	20.80	-2.35	0.34
6	1846	0.7	113.9	1845.74	1.69	21.91	-2.01	0.20
7	1937	0.8	103.3	1936.73	1.32	23.04	-1.66	0.19
8	2027	0.7	157.0	2026.73	0.67	23.87	-1.02	0.76
9	2117	0.7	171.7	2116.72	-0.38	24.16	0.03	0.20
10	2208	0.6	207.3	2207.72	-1.35	24.02	1.00	0.45
11	2298	0.5	233.9	2297.71	-2.00	23.49	1.66	0.30
12	2389	0.6	239.6	2388.71	-2.48	22.76	2.15	0.13
13	2479	0.5	246.6	2478.70	-2.87	21.99	2.55	0.13
14	2570	0.5	206.7	2569.70	-3.38	21.45	3.07	0.37
15	2660	0.2	263.5	2659.70	-3.75	21.12	3.44	0.47
16	2750	0.1	118.7	2749.70	-3.81	21.03	3.50	0.32
17	2841	0.6	163.6	2840.70	-4.30	21.23	3.99	0.59
18	2931	0.4	186.6	2930.69	-5.07	21.33	4.76	0.31
19	3021	0.1	74.0	3020.69	-5.36	21.37	5.05	0.50
20	3112	0.2	44.4	3111.69	-5.22	21.56	4.91	0.14
21	3202	0.2	119.9	3201.69	-5.19	21.80	4.87	0.27
22	3292	0.2	113.1	3291.69	-5.33	22.08	5.01	0.03
23	3338	1.1	197.1	3337.69	-5.78	22.03	5.46	2.39
24	3383	4.1	179.2	3382.64	-7.80	21.92	7.48	6.83
25	3428	6.9	182.2	3427.43	-12.11	21.84	11.80	6.25
26	3474	9.9	183.1	3472.93	-18.82	21.52	18.51	6.53
27	3519	12.4	185.2	3517.07	-27.50	20.87	27.19	5.63
28	3564	16.1	184.6	3560.68	-38.54	19.94	38.24	8.23
29	3609	19.9	183.6	3603.47	-52.40	18.95	52.12	8.47
30	3654	22.8	182.4	3645.38	-68.76	18.11	68.49	6.52
31	3699	25.8	181.9	3686.39	-87.26	17.42	87.00	6.68
32	3745	28.7	181.6	3727.28	-108.31	16.78	108.06	6.31
33	3790	31.7	182.0	3766.17	-130.94	16.06	130.69	6.68
34	3835	34.7	182.0	3803.82	-155.56	15.20	155.32	6.67
35	3880	37.1	182.0	3840.27	-181.93	14.28	181.70	5.33



Survey Calculation Program

Encana Oil & Gas  
Precision 209  
J & A Associates 1-11H

M.W.D. OPERATOR: Kenney H. / Shawn F..  
DIRECTIONAL DRILLERS: Richard Snider / Billy Spurgeon

Magnetic Declination:	6.3
Job #:	DR1206099
Vertical Section Azimuth	180.83

Minimum Curvature Calculation

No.	Survey Depth	INC	AZM	TVD	N-S	E-W	Vertical Section	DLS/100
36	3925	39.5	183.0	3875.58	-209.79	13.06	209.58	5.51
37	3971	42.8	183.2	3910.21	-240.01	11.42	239.82	7.18
38	4016	45.8	181.9	3942.41	-271.40	10.03	271.23	6.97
39	4061	48.5	181.3	3973.02	-304.38	9.12	304.21	6.08
40	4106	51.6	181.2	4001.91	-338.86	8.36	338.71	6.89
41	4152	55.1	181.8	4029.36	-375.75	7.39	375.60	7.68
42	4197	59.6	181.3	4053.63	-413.61	6.37	413.48	10.04
43	4242	61.6	180.8	4075.72	-452.81	5.66	452.68	4.55
44	4287	61.4	180.9	4097.19	-492.35	5.07	492.23	0.49
45	4332	61.0	180.3	4118.87	-531.78	4.66	531.66	1.47
46	4377	60.8	180.5	4140.76	-571.10	4.38	570.98	0.59
47	4422	61.4	181.4	4162.51	-610.49	3.73	610.37	2.20
48	4468	65.2	183.2	4183.17	-651.54	2.07	651.45	8.97
49	4513	69.9	184.1	4200.35	-693.04	-0.58	692.97	10.61
50	4558	74.8	184.3	4213.99	-735.79	-3.73	735.77	10.90
51	4603	79.6	184.7	4223.96	-779.52	-7.17	779.55	10.70
52	4648	83.1	184.6	4230.73	-823.86	-10.77	823.93	7.78
53	4658	83.9	184.0	4231.86	-833.77	-11.52	833.85	9.98
54	4722	85.9	181.9	4237.55	-897.42	-14.80	897.54	4.52
55	4754	85.5	181.8	4239.95	-929.31	-15.83	929.45	1.29
56	4786	86.7	181.4	4242.12	-961.23	-16.72	961.37	3.95
57	4817	88.5	181.3	4243.42	-992.19	-17.45	992.34	5.82
58	4849	89.9	181.0	4243.87	-1024.18	-18.09	1024.33	4.47
59	4881	90.3	181.2	4243.81	-1056.17	-18.71	1056.33	1.40
60	4912	91.1	181.4	4243.43	-1087.16	-19.41	1087.33	2.66
61	4944	90.5	180.2	4242.99	-1119.16	-19.86	1119.33	4.19
62	4976	91.2	180.4	4242.51	-1151.15	-20.02	1151.32	2.28
63	5007	90.6	179.7	4242.03	-1182.15	-20.05	1182.31	2.97
64	5039	89.7	179.9	4241.94	-1214.15	-19.94	1214.31	2.88
65	5071	87.9	180.1	4242.61	-1246.14	-19.94	1246.30	5.66
66	5102	87.5	180.2	4243.86	-1277.11	-20.02	1277.27	1.33
67	5134	88.3	179.8	4245.03	-1309.09	-20.02	1309.24	2.79
68	5165	89.8	179.6	4245.54	-1340.09	-19.86	1340.23	4.88
69	5197	89.7	179.1	4245.68	-1372.08	-19.49	1372.22	1.59
70	5228	90.2	178.4	4245.71	-1403.08	-18.82	1403.20	2.77
71	5260	90.6	178.3	4245.49	-1435.06	-17.90	1435.17	1.29



Survey Calculation Program

Encana Oil & Gas  
Precision 209  
J & A Associates 1-11H

M.W.D. OPERATOR: Kenney H. / Shawn F..  
DIRECTIONAL DRILLERS: Richard Snider / Billy Spurgeon

Magnetic Declination:	6.3
Job #:	DR1206099
Vertical Section Azimuth	180.83

Minimum Curvature Calculation

No.	Survey Depth	INC	AZM	TVD	N-S	E-W	Vertical Section	DLS/100
72	5291	90.8	179.2	4245.11	-1466.05	-17.22	1466.15	2.97
73	5323	90.9	178.8	4244.63	-1498.04	-16.66	1498.13	1.29
74	5355	90.5	178.9	4244.24	-1530.03	-16.02	1530.11	1.29
75	5386	90.5	179.3	4243.97	-1561.03	-15.53	1561.09	1.29
76	5418	89.1	179.3	4244.08	-1593.03	-15.14	1593.08	4.38
77	5450	89.4	179.3	4244.50	-1625.02	-14.75	1625.06	0.94
78	5481	90.2	179.0	4244.61	-1656.02	-14.29	1656.05	2.76
79	5513	90.2	178.7	4244.50	-1688.01	-13.65	1688.03	0.94
80	5544	90.5	180.4	4244.31	-1719.01	-13.41	1719.02	5.57
81	5576	90.3	180.4	4244.09	-1751.01	-13.63	1751.02	0.63
82	5610	88.9	180.2	4244.32	-1785.00	-13.81	1785.02	4.16
83	5641	89.2	179.7	4244.84	-1816.00	-13.78	1816.01	1.88
84	5672	88.9	180.3	4245.35	-1847.00	-13.78	1847.00	2.16
85	5702	90.2	180.8	4245.59	-1876.99	-14.07	1877.00	4.64
86	5733	90.4	184.7	4245.42	-1907.95	-15.55	1907.98	12.60
87	5763	91.4	185.0	4244.95	-1937.84	-18.09	1937.90	3.48
88	5794	90.2	185.6	4244.52	-1968.70	-20.95	1968.80	4.33
89	5825	89.8	184.6	4244.52	-1999.58	-23.71	1999.71	3.47
90	5855	89.5	183.0	4244.70	-2029.51	-25.70	2029.67	5.43
91	5886	89.0	182.7	4245.11	-2060.47	-27.24	2060.65	1.88
92	5916	88.1	181.9	4245.87	-2090.44	-28.44	2090.63	4.01
93	5947	86.0	180.0	4247.46	-2121.39	-28.96	2121.58	9.13
94	5978	86.5	180.3	4249.49	-2152.32	-29.04	2152.52	1.88
95	6008	86.8	180.8	4251.24	-2182.27	-29.32	2182.46	1.94
96	6039	85.0	180.1	4253.46	-2213.19	-29.57	2213.38	6.23
97	6069	85.8	180.2	4255.87	-2243.09	-29.65	2243.28	2.69
98	6100	85.1	179.1	4258.33	-2273.99	-29.46	2274.18	4.20
99	6130	86.3	179.6	4260.58	-2303.90	-29.12	2304.08	4.33
100	6161	88.0	179.9	4262.12	-2334.86	-28.98	2335.04	5.57
101	6191	89.5	179.6	4262.77	-2364.86	-28.85	2365.03	5.10
102	6222	89.7	178.3	4262.99	-2395.85	-28.28	2396.01	4.24
103	6252	90.0	178.3	4263.07	-2425.84	-27.39	2425.98	1.00
104	6284	91.0	178.8	4262.79	-2457.82	-26.58	2457.95	3.49
105	6316	93.6	179.1	4261.50	-2489.79	-26.00	2489.91	8.18
106	6347	94.1	179.0	4259.42	-2520.72	-25.49	2520.82	1.64
107	6379	94.6	178.6	4256.99	-2552.62	-24.82	2552.71	2.00





Survey Calculation Program

Encana Oil & Gas  
Precision 209  
J & A Associates 1-11H

M.W.D. OPERATOR: Kenney H. / Shawn F..  
DIRECTIONAL DRILLERS: Richard Snider / Billy Spurgeon

Magnetic Declination:	6.3
Job #:	DR1206099
Vertical Section Azimuth	180.83

Minimum Curvature Calculation

No.	Survey Depth	INC	AZM	TVD	N-S	E-W	Vertical Section	DLS/100
108	6410	94.2	180.1	4254.62	-2583.52	-24.47	2583.61	4.99
109	6442	93.6	181.0	4252.44	-2615.45	-24.77	2615.53	3.37
110	6474	93.9	180.3	4250.35	-2647.38	-25.14	2647.46	2.38
111	6505	92.3	181.3	4248.67	-2678.33	-25.57	2678.41	6.08
112	6537	91.3	182.0	4247.66	-2710.30	-26.49	2710.39	3.81
113	6569	91.0	181.8	4247.02	-2742.27	-27.55	2742.38	1.13
114	6600	90.8	182.0	4246.54	-2773.25	-28.58	2773.37	0.91
115	6631	91.2	181.6	4245.99	-2804.23	-29.55	2804.36	1.82
116	6664	91.1	181.0	4245.33	-2837.22	-30.30	2837.36	1.84
117	6695	89.7	181.3	4245.12	-2868.21	-30.92	2868.35	4.62
118	6727	88.5	180.7	4245.62	-2900.20	-31.48	2900.35	4.19
119	6758	88.4	180.7	4246.46	-2931.18	-31.86	2931.34	0.32
120	6790	89.8	181.3	4246.96	-2963.17	-32.42	2963.33	4.76
121	6821	90.1	181.1	4246.99	-2994.17	-33.07	2994.33	1.16
122	6853	90.2	180.9	4246.90	-3026.16	-33.62	3026.33	0.70
123	6885	90.3	180.9	4246.76	-3058.16	-34.13	3058.33	0.31
124	6916	90.7	180.5	4246.49	-3089.15	-34.51	3089.33	1.82
125	6948	90.9	180.5	4246.05	-3121.15	-34.79	3121.33	0.63
126	6979	89.6	180.8	4245.91	-3152.15	-35.14	3152.33	4.30
127	7011	89.8	181.1	4246.08	-3184.14	-35.67	3184.32	1.13
128	7043	90.0	181.0	4246.13	-3216.14	-36.25	3216.32	0.70
129	7074	90.5	180.7	4246.00	-3247.13	-36.71	3247.32	1.88
130	7106	90.4	180.3	4245.75	-3279.13	-36.99	3279.32	1.29
131	7138	90.4	179.9	4245.52	-3311.13	-37.05	3311.32	1.25
132	7169	90.9	179.8	4245.17	-3342.13	-36.97	3342.31	1.64
133	7201	91.1	179.3	4244.61	-3374.12	-36.72	3374.30	1.68
134	7233	90.9	179.9	4244.06	-3406.12	-36.49	3406.29	1.98
135	7264	90.1	178.9	4243.78	-3437.11	-36.17	3437.28	4.13
136	7296	90.5	179.0	4243.62	-3469.11	-35.58	3469.26	1.29
137	7328	90.0	179.9	4243.48	-3501.10	-35.28	3501.25	3.22
138	7359	88.8	180.0	4243.80	-3532.10	-35.25	3532.24	3.88
139	7391	89.0	179.8	4244.42	-3564.10	-35.19	3564.23	0.88
140	7422	89.0	181.1	4244.96	-3595.09	-35.44	3595.23	4.19
141	7454	88.8	180.3	4245.57	-3627.08	-35.83	3627.22	2.58
142	7486	88.9	180.4	4246.21	-3659.07	-36.02	3659.21	0.44
143	7517	89.8	181.8	4246.57	-3690.07	-36.62	3690.21	5.37



Survey Calculation Program

Encana Oil & Gas  
Precision 209  
J & A Associates 1-11H

M.W.D. OPERATOR: Kenney H. / Shawn F..  
DIRECTIONAL DRILLERS: Richard Snider / Billy Spurgeon

Magnetic Declination:	6.3
Job #:	DR1206099
Vertical Section Azimuth	180.83

Minimum Curvature Calculation

No.	Survey Depth	INC	AZM	TVD	N-S	E-W	Vertical Section	DLS/100
144	7549	90.4	182.1	4246.51	-3722.05	-37.71	3722.20	2.10
145	7580	90.6	182.1	4246.24	-3753.02	-38.84	3753.19	0.65
146	7612	90.5	181.8	4245.93	-3785.00	-39.93	3785.19	0.99
147	7644	90.6	182.4	4245.63	-3816.98	-41.10	3817.18	1.90
148	7675	90.4	182.4	4245.35	-3847.95	-42.40	3848.16	0.65
149	7707	90.0	182.3	4245.24	-3879.93	-43.71	3880.15	1.29
150	7739	89.0	182.2	4245.52	-3911.90	-44.97	3912.14	3.14
151	7770	88.4	182.6	4246.23	-3942.86	-46.27	3943.12	2.33
152	7802	89.6	182.2	4246.78	-3974.83	-47.61	3975.10	3.95
153	7834	90.3	181.8	4246.81	-4006.81	-48.72	4007.10	2.52
154	7865	90.9	181.8	4246.49	-4037.79	-49.70	4038.09	1.94
155	7897	90.9	181.4	4245.98	-4069.78	-50.59	4070.08	1.25
156	7928	90.4	181.9	4245.63	-4100.76	-51.48	4101.08	2.28
157	7960	90.1	181.8	4245.49	-4132.75	-52.52	4133.07	0.99
158	7991	90.3	182.1	4245.38	-4163.73	-53.57	4164.07	1.16
159	8023	90.4	182.2	4245.19	-4195.70	-54.77	4196.06	0.44
160	8055	90.0	182.3	4245.08	-4227.68	-56.03	4228.05	1.29
161	8086	89.4	182.5	4245.24	-4258.65	-57.33	4259.03	2.04
162	8118	89.3	182.4	4245.60	-4290.62	-58.69	4291.02	0.44
163	8149	89.7	182.7	4245.87	-4321.59	-60.07	4322.00	1.61
164	8181	90.0	182.1	4245.96	-4353.56	-61.41	4353.99	2.10
165	8213	90.7	182.0	4245.76	-4385.54	-62.56	4385.98	2.21
166	8244	91.1	182.4	4245.28	-4416.51	-63.75	4416.97	1.82
167	8307	91.4	183.0	4243.90	-4479.43	-66.71	4479.92	1.06
168	8339	90.3	182.9	4243.43	-4511.38	-68.36	4511.90	3.45
169	8371	90.0	183.4	4243.34	-4543.33	-70.12	4543.87	1.82
170	8403	90.1	183.0	4243.31	-4575.28	-71.91	4575.84	1.29
171	8434	90.2	183.2	4243.23	-4606.24	-73.58	4606.82	0.72
172	8466	90.5	183.5	4243.04	-4638.18	-75.45	4638.79	1.33
173	8498	90.7	183.0	4242.70	-4670.13	-77.27	4670.76	1.68
174	8518	91.2	183.6	4242.37	-4690.09	-78.42	4690.73	3.90
PTB	8565	91.2	183.6	4241.39	-4736.99	-81.37	4737.67	0.00

Conservation Division  
Finney State Office Building  
130 S. Market, Rm. 2078  
Wichita, KS 67202-3802



Phone: 316-337-6200  
Fax: 316-337-6211  
<http://kcc.ks.gov/>

Mark Sievers, Chairman  
Thomas E. Wright, Commissioner  
Shari Feist Albrecht, Commissioner

Sam Brownback, Governor

November 15, 2012

Sharon Cook  
EnCana Oil & Gas (USA) Inc.  
5851 LEGACY CIRCLE  
PLANO, TX 75024

Re: ACO1  
API 15-135-25431-01-00  
J & A Associates 11H 1  
NW/4 Sec.11-18S-21W  
Ness County, Kansas

Dear Production Department:

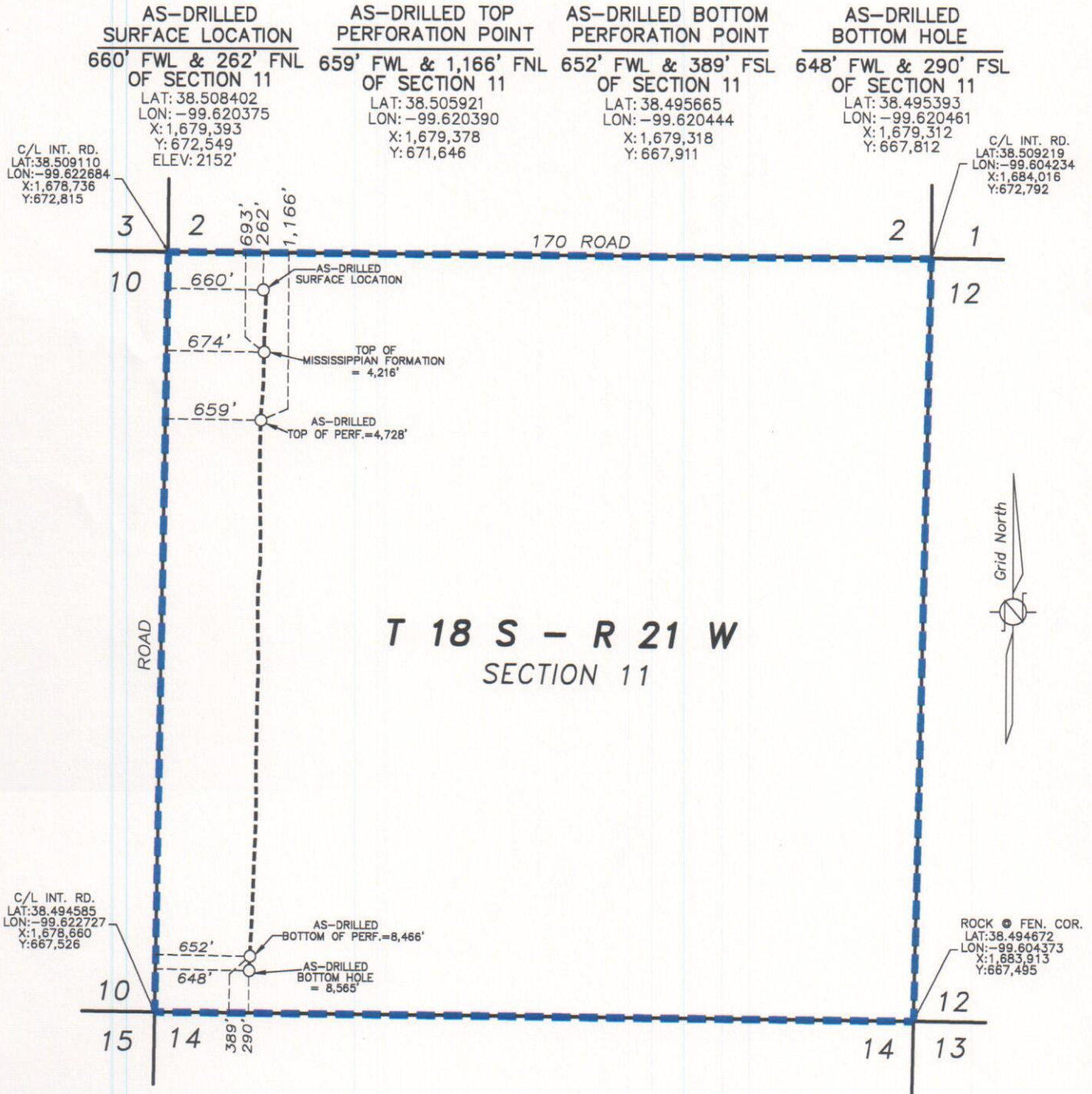
We are herewith requesting that the Well Completion Form ACO-1 and attached information for the subject well be held confidential for a period of two years.

Should you have any questions or need additional information regarding subject well, please contact our office.

Respectfully,  
Sharon Cook

THIS DRAWING DOES NOT REPRESENT A BOUNDARY SURVEY. DISTANCES, COORDINATES AND BEARINGS SHOWN ARE NOT INTENDED TO BE DEFINITIVE IN ESTABLISHING ACTUAL TITLE BOUNDARIES. THIS DRAWING IS FOR CONSTRUCTION PURPOSES ONLY.

All Bearings, Distances, and Coordinates shown hereon are based on the Kansas State Plane Coordinate System, N.A.D. 27 Datum, South Zone.



I hereby certify this plat true and correct to the best of my knowledge and belief.

**REVIEW COPY**

**AS-DRILLED PLAT**  
**ENCANA OIL & GAS (USA) INC.**  
**J & A ASSOCIATES 11H-1**  
**NESS COUNTY, KANSAS**  
**SCALE: 1" = 1000'**

REV: 11-15-2012  
 REV: 10-01-2012  
 REV: 09-25-2012  
 08-30-2012