





1102082

Operator Name: \_\_\_\_\_ Lease Name: \_\_\_\_\_ Well #: \_\_\_\_\_

Sec. \_\_\_\_\_ Twp. \_\_\_\_\_ S. R. \_\_\_\_\_  East  West County: \_\_\_\_\_

**INSTRUCTIONS:** Show important tops of formations penetrated. Detail all cores. Report all final copies of drill stems tests giving interval tested, time tool open and closed, flowing and shut-in pressures, whether shut-in pressure reached static level, hydrostatic pressures, bottom hole temperature, fluid recovery, and flow rates if gas to surface test, along with final chart(s). Attach extra sheet if more space is needed.

Final Radioactivity Log, Final Logs run to obtain Geophysical Data and Final Electric Logs must be emailed to kcc-well-logs@kcc.ks.gov. Digital electronic log files must be submitted in LAS version 2.0 or newer AND an image file (TIFF or PDF).

Drill Stem Tests Taken <i>(Attach Additional Sheets)</i>	<input type="checkbox"/> Yes <input type="checkbox"/> No	<input type="checkbox"/> Log	Formation (Top), Depth and Datum	<input type="checkbox"/> Sample
Samples Sent to Geological Survey	<input type="checkbox"/> Yes <input type="checkbox"/> No	Name	Top	Datum
Cores Taken	<input type="checkbox"/> Yes <input type="checkbox"/> No			
Electric Log Run	<input type="checkbox"/> Yes <input type="checkbox"/> No			
List All E. Logs Run:				

CASING RECORD <input type="checkbox"/> New <input type="checkbox"/> Used							
Report all strings set-conductor, surface, intermediate, production, etc.							
Purpose of String	Size Hole Drilled	Size Casing Set (In O.D.)	Weight Lbs. / Ft.	Setting Depth	Type of Cement	# Sacks Used	Type and Percent Additives

ADDITIONAL CEMENTING / SQUEEZE RECORD				
Purpose:	Depth Top Bottom	Type of Cement	# Sacks Used	Type and Percent Additives
<input type="checkbox"/> Perforate				
<input type="checkbox"/> Protect Casing				
<input type="checkbox"/> Plug Back TD				
<input type="checkbox"/> Plug Off Zone				

Did you perform a hydraulic fracturing treatment on this well?  Yes  No *(If No, skip questions 2 and 3)*

Does the volume of the total base fluid of the hydraulic fracturing treatment exceed 350,000 gallons?  Yes  No *(If No, skip question 3)*

Was the hydraulic fracturing treatment information submitted to the chemical disclosure registry?  Yes  No *(If No, fill out Page Three of the ACO-1)*

Shots Per Foot	PERFORATION RECORD - Bridge Plugs Set/Type Specify Footage of Each Interval Perforated	Acid, Fracture, Shot, Cement Squeeze Record <i>(Amount and Kind of Material Used)</i>	Depth

TUBING RECORD:      Size: \_\_\_\_\_ Set At: \_\_\_\_\_ Packer At: \_\_\_\_\_ Liner Run:  Yes  No

Date of First, Resumed Production, SWD or ENHR. \_\_\_\_\_ Producing Method:  
 Flowing     Pumping     Gas Lift     Other *(Explain)* \_\_\_\_\_

Estimated Production Per 24 Hours	Oil Bbls.	Gas Mcf	Water Bbls.	Gas-Oil Ratio	Gravity

<b>DISPOSITION OF GAS:</b> <input type="checkbox"/> Vented <input type="checkbox"/> Sold <input type="checkbox"/> Used on Lease <i>(If vented, Submit ACO-18.)</i>	<b>METHOD OF COMPLETION:</b> <input type="checkbox"/> Open Hole <input type="checkbox"/> Perf. <input type="checkbox"/> Dually Comp. <input type="checkbox"/> Commingled <i>(Submit ACO-5)</i> <i>(Submit ACO-4)</i> <input type="checkbox"/> Other <i>(Specify)</i> _____	<b>PRODUCTION INTERVAL:</b> _____ _____
--	---	---

Form	ACO1 - Well Completion
Operator	Abercrombie Energy, LLC
Well Name	MOORE 1-9
Doc ID	1102082

All Electric Logs Run

Dual Induction Log
Compensated Neutron Density/Neutron PE Log
Micro Log
Sonic Log

Form	ACO1 - Well Completion
Operator	Abercrombie Energy, LLC
Well Name	MOORE 1-9
Doc ID	1102082

Tops

Name	Top	Datum
Anhydrite	2257	+812
Base/Anhydrite	2273	+796
Heebner Shale	3940	-871
Lansing	3986	-917
Muncie Creek	4186	-1117
Stark Shale	4299	-1230
BKC	4436	-1367
Marmaton	4462	-1393
Beymer/Pawnee	4554	-1485
Johnson/Ft Scott	4576	-1507
Morrow Shale	4776	-1707
Mississippian	4881	-1812



**WESLEY D. HANSEN** Consulting Petroleum Geologist  
 212 N. Market, Suite 257, Wichita, KS 67202  
 Office: 316-267-7313 Cellular: 316-772-6188

KGS  
**WARG**  
 Kansas License #418

**LITHOLOGY STRIP LOG**  
**WellSight Systems**  
 Scale 1:240 (5"=100') Imperial

Well Name: **Abercrombie Energy, LLC #1-9 Moore**  
 Location: **1800' FSL, 1390' FEL of Section 9-205-34W**  
 License Number: **11-2-2012** Well: **11-2-2012** Drilling Completed: **11-14-2012**  
 Spud Dates: **1800' FSL, 1390' FEL of 9-205-34W**  
 Surface Coordinates: **1800' FSL, 1390' FEL of 9-205-34W**

Bottom Hole Coordinates: **1800' FSL, 1390' FEL of 9-205-34W**  
 Ground Elevation (ft): **3650'** K.B. Elevation (ft): **3662'**  
 Logged Interval (ft): **3050'** To: **RTD** Total Depth (ft): **4092'**  
 Formation: **Mississippian** RTD  
 Type of Drilling Fluid: **Chemical**

Printed by MUDLOG from WellSight Systems 1-800-447-1534 www.WellSight.com

**OPERATOR**

Company: **Abercrombie Energy, LLC**  
 Address: **10209 W. Central, Suite 2**  
**Wichita, KS 67212**

**GEOLOGIST**

Name: **Wesley D. Hansen**  
 Company: **Wesley D. Hansen - Consulting Petroleum Geologist**  
 Address: **212 N. Market, Suite 257**  
**Wichita, KS 67202**  
 Office: **316-263-7313 Cellular: 316-772-6188**

**COMMENTS**

Contractor: **VAL Energy, LLC Rig No. 7**  
 Pusher: **James Schultz**  
 Surface Casing: **8 5/8" set at 301' w/ 190 x 3**  
 Production Casing: **5 1/2" set at +-0-4982'**  
 Mud by: **MudCo - Tony Maestas was the engineer**  
 DST's by: **Trilobite Testing - Jace McKinney was the tester**  
 Logs by: **Nabors (DL, CN-CD-PE, ML, Soni), Jeff Luebbers was the engineer**  
 Deviation Surveys: **3/4 deg. @ 302'; 2 deg. @ 4982'**

**BIT RECORD**

Bit #	Size	MFG	Type	Depth Out	Footage Cut	Hours on bit
1	12 1/4"	JJZ	rerun	302'	302'	3 3/4
2	7 7/8"	JJZ	QX28	4435'	4433'	118 1/4
3	7 7/8"	JJZ	QX28	4982'	247'	16 1/4

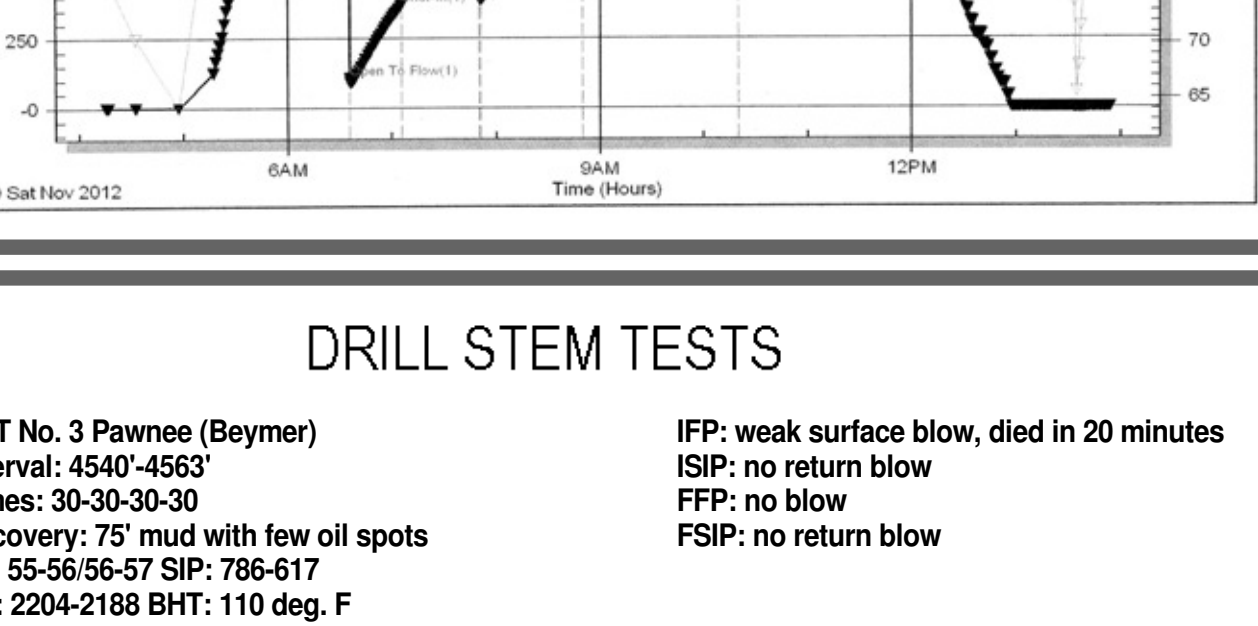
**FORMATION TOPS AND STRUCTURAL COMPARISON**

FORMATION	SAMPLE TOPS		LOG TOPS		COMPARISON WELL #1 Harkness-Moore CSE NE 9-20-34W 3061' KB
	Depth	Datum	Depth	Datum	
Anhydrite	2259'	+810	2257'	+812	-1'
B/Anhydrite	2281'	+788	2273'	+796	-2'
Heebner Shale	3943'	-874	3940'	-871	+6'
Lansing	3988'	-919	3986'	-917	+4'
Muncie Creek Shale	4187'	-1118	4186'	-1117	+2'
Stark Shale	4296'	-1229	4299'	-1230	+3'
Belm	4436'	-1367	4421'	-1367	+4'
Marmaton	4466'	-1397	4462'	-1393	+12'
Beymer/Pawnee	4554'	-1485	4554'	-1485	+4'
Johnson/Fort Scott	4580'	-1511	4576'	-1507	+6'
Cherokee Shale	4593'	-1524	4596'	-1521	+4'
Morrow	4776'	-1707	4770'	-1707	+4'
Mississippian	4882'	-1813	4881'	-1812	-10'
RTD	4982'	-1913	4982'	-1913	

**DRILL STEM TESTS**

DST No. 1 Lansing/Kansas City "K"  
 Interval: 4296'-4500'  
 Times: 30-45-60-90  
 Recovery: 76' WCM (10m, 90m); 310' (40m, 60w); 124' MWC (10m, 20w, 30g, 40c)  
 510'; chl. 30,000  
 FP: 25-122/126-259 SIP: 1128-1105  
 HP: 2198-2140 BHT: 115 deg. F

**Pressure vs. Time**

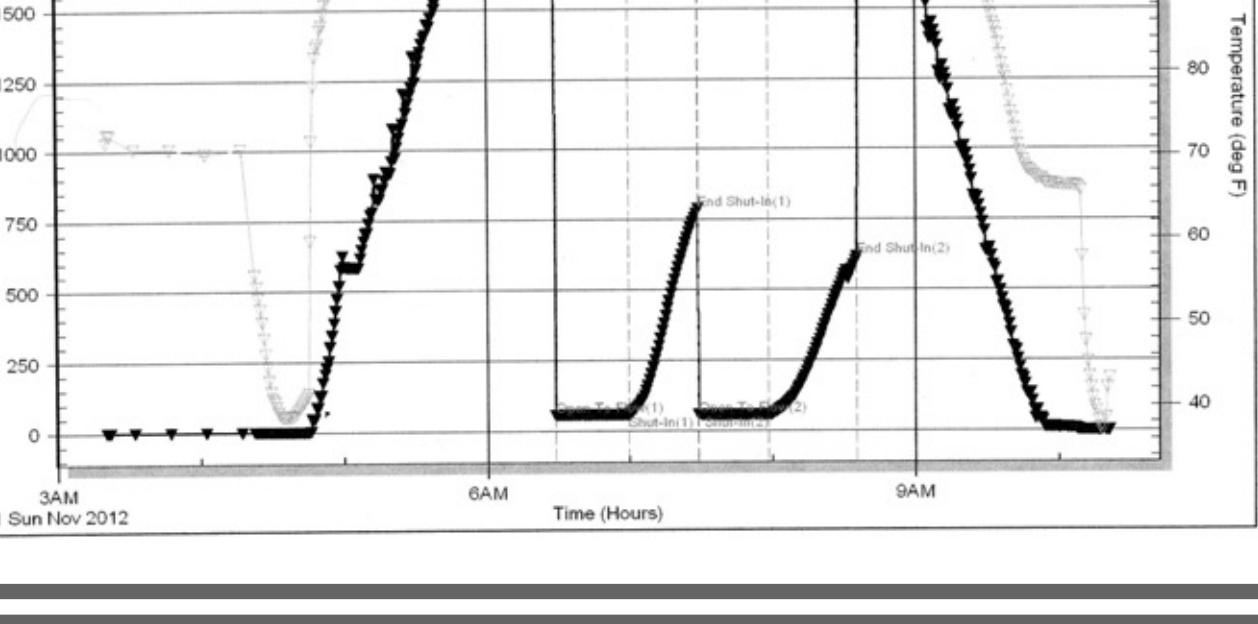


"L" = no return blow  
 "I" = strong blow, B.O.B. in 24 minutes  
 "F" = no return blow  
 "S" = strong blow, B.O.B. in 28 minutes  
 "MCW" = no return blow  
 "total fluid" = no return blow

**DRILL STEM TESTS**

DST No. 2 Marmaton  
 Interval: 4540'-4563'  
 Times: 30-45-60-90  
 Recovery: GTS late in FSP; 2108' GP: 640'  
 GCO (10g, 90c); 620' GCO (30g, 70g); 864' GCO (15g, 85c); 186' MW&GCO (10m, 20w, 30g, 40c)  
 total fluid 2310'; oil gravity 34 deg.  
 FP: 107-373-392-746 SIP: 1150-1145  
 HP: 2262-2172 BHT: 121 deg. F

**Pressure vs. Time**

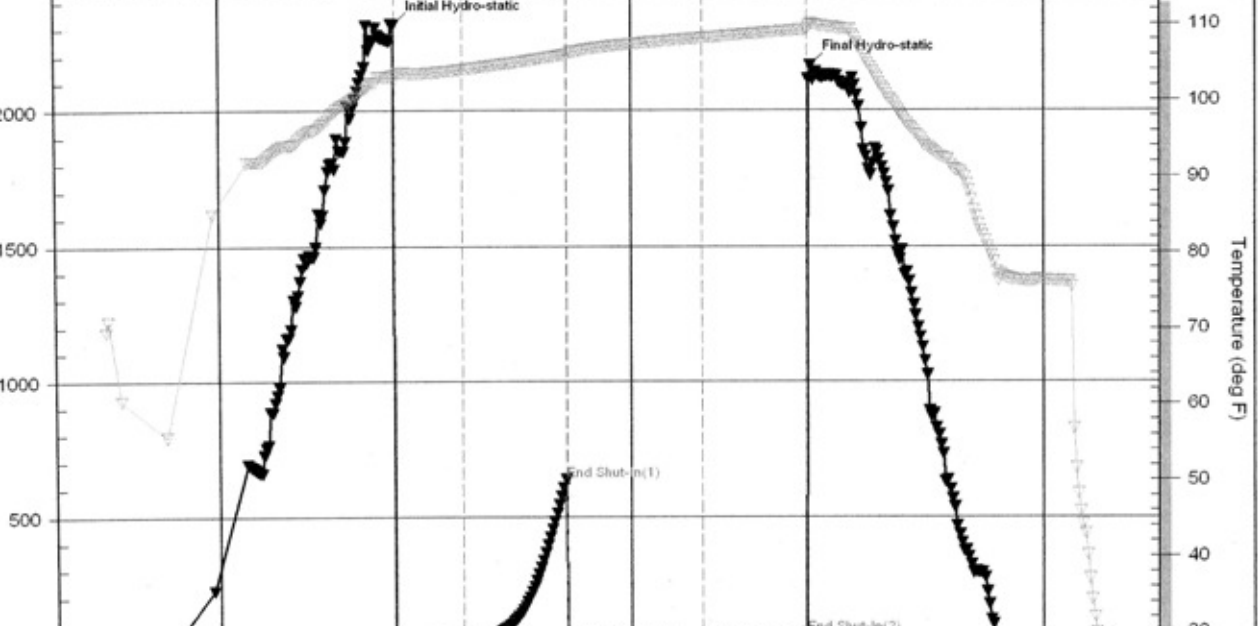


"L" = weak surface blow, died in 20 minutes  
 "I" = strong blow, B.O.B. in 1 minute  
 "F" = no return blow  
 "S" = strong blow, B.O.B. in 2 1/2 minutes  
 "MCW" = no return blow  
 "total fluid" = no return blow

**DRILL STEM TESTS**

DST No. 3 Pawnee (Elymer)  
 Interval: 4540'-4563'  
 Times: 30-45-60-90  
 Recovery: 75' mud with few oil spots  
 FP: 55-56-56-57 SIP: 786-617  
 HP: 2204-2188 BHT: 110 deg. F

**Pressure vs. Time**

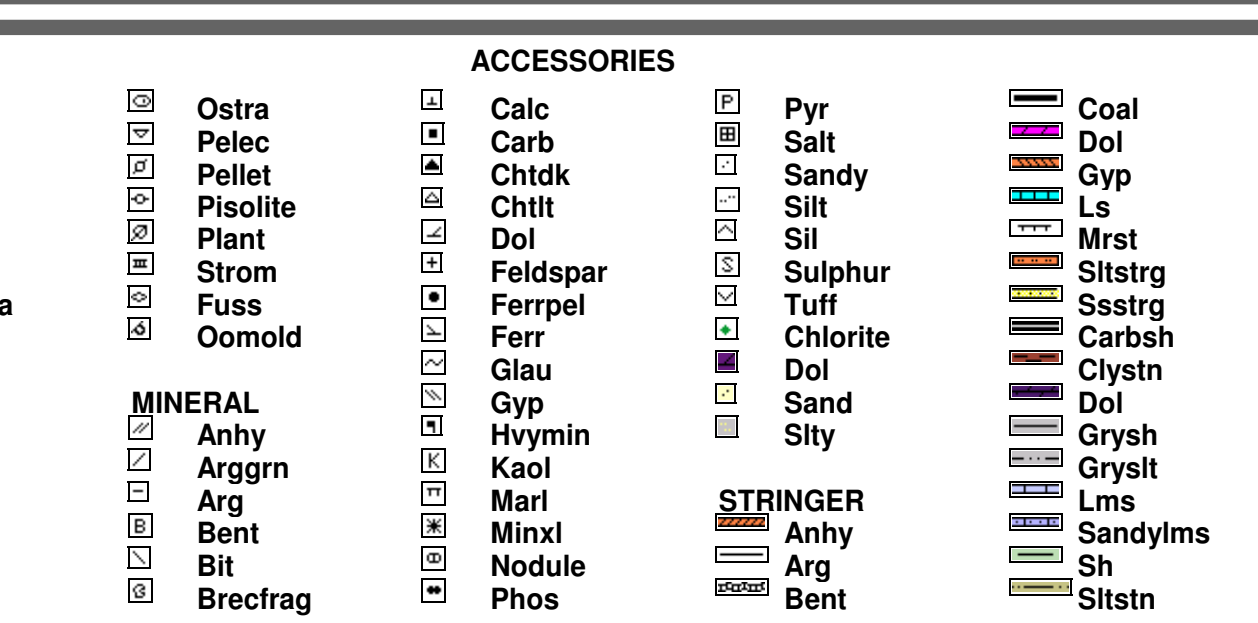


"L" = weak blow, died in 20 minutes  
 "I" = no return blow  
 "F" = no return blow  
 "S" = no return blow

**DRILL STEM TESTS**

DST No. 4 Fort Scott (Johnson)  
 Interval: 4564'-4595'  
 Times: 30-45-60-45  
 Recovery: 30' mud with oil spots  
 FP: 24-28/31-31 SIP: 637-66  
 HP: 2317-2164 BHT: 109 deg. F

**Pressure vs. Time**

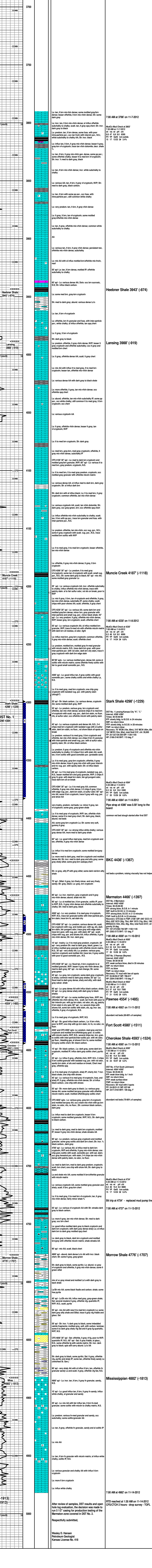


"I" = weak blow, died in 1 inch  
 "I" = no return blow  
 "F" = weak surface blow  
 "S" = no return blow

Rock Types	Shale	Shy dolo
Carb sh	Siltstn	Shaly ls
Dol	Siltstn	
Dtd	Siltstn	
Gry sh	Siltstn	
Sandylms	Siltstn	

FOSSIL	MINERAL	ACCESORIES	OTHER SYMBOLS
Algae	Anhy	Calc	Core
Amph	Argm	Carb	Core
BKC	Arg	Chdk	Core
Biolcst	Bent	Chnt	Core
Brach	Brcfrag	Dol	Core
Bryozoa		Doldsp	Core
Ceph		Ferr	Core
Coral		Gla	Core
Echin		Gyp	Core
Fish		Hvymn	Core
Foram		Kaol	Core
Fossil		Marl	Core
Gastro		Mnd	Core
Oolite		Nodule	Core
		Phos	Core
		Pyr	Core
		Salt	Core
		Sandy	Core
		Silt	Core
		Sil	Core
		Sulphur	Core
		Tuff	Core
		Chlorite	Core
		Dol	Core
		Sand	Core
		Sity	Core
		STRINGER	Core
		Arg	Core
		Bent	Core
		Coal	Core
		Gyp	Core
		Ls	Core
		Mststrg	Core
		Sststrg	Core
		Carbsh	Core
		Cystgn	Core
		Dol	Core
		Gryst	Core
		Lms	Core
		Sandylms	Core
		Sh	Core
		Siltstn	Core

INTERVALS	EVENTS	OIL SHOWS	Trace
Core	RTD	Even	Dead
Dst	Dst top/base	Spotted	Gas show



After review of samples, DST results and open hole evaluation, the decision was made to run 5 1/2" casing for production testing of the Marmaton zone covered in DST No. 2.  
 Respectfully submitted,  
 Wesley D. Hansen  
 Petroleum Geologist  
 Kansas License No. 418



**TRILOBITE TESTING, INC**

# DRILL STEM TEST REPORT

Abercrombie Energy, LLC

**9-20s-34w Scott Co. KS**

10209 W Central STE 2  
Wichita KS, 67212

**Moore 1-9**

Job Ticket: 48920

**DST#: 1**

ATTN: Wes Hanson

Test Start: 2012.11.08 @ 22:40:00

## GENERAL INFORMATION:

Formation: **Kansas City " K & L**

Deviated: No Whipstock: ft (KB)

Time Tool Opened: 04:49:00

Time Test Ended: 10:56:30

Test Type: Conventional Bottom Hole (Initial)

Tester: Jace McKinney

Unit No: 46

**Interval: 4298.00 ft (KB) To 4384.00 ft (KB) (TVD)**

Reference Elevations: 3069.00 ft (KB)

Total Depth: 4384.00 ft (KB) (TVD)

3059.00 ft (CF)

Hole Diameter: 7.88 inches Hole Condition: Fair

KB to GR/CF: 10.00 ft

**Serial #: 8675**

**Inside**

Press @RunDepth: 258.82 psig @ 4299.00 ft (KB)

Capacity: 8000.00 psig

Start Date: 2012.11.08

End Date:

2012.11.09

Last Calib.:

2012.11.09

Start Time: 22:40:15

End Time:

10:56:30

Time On Btm:

2012.11.09 @ 04:47:00

Time Off Btm:

2012.11.09 @ 08:38:15

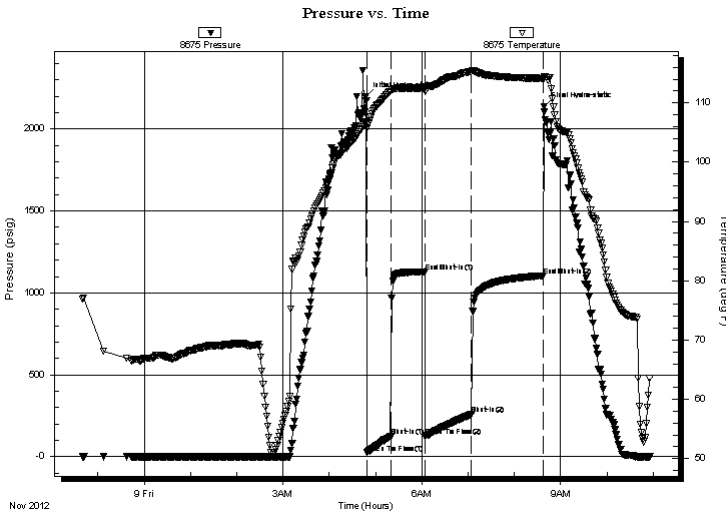
**TEST COMMENT:** B.O.B. in 24 min.

Bled off for 5 min. No return blow

B.O.B. in 28 min.

Bled off for 5 min. No return blow

## PRESSURE SUMMARY



Time (Min.)	Pressure (psig)	Temp (deg F)	Annotation
0	2198.45	106.65	Initial Hydro-static
2	24.54	105.71	Open To Flow (1)
33	122.44	111.96	Shut-In(1)
78	1128.30	112.50	End Shut-In(1)
78	125.81	112.01	Open To Flow (2)
138	258.82	115.31	Shut-In(2)
231	1104.51	114.14	End Shut-In(2)
232	2138.39	114.12	Final Hydro-static

## Recovery

Length (ft)	Description	Volume (bbl)
76.00	w cm 10%W 90%m	1.07
310.00	mcw 40%M 60%w	4.35
124.00	mcw 10%M 90%w	1.74

## Gas Rates

Choke (inches)	Pressure (psig)	Gas Rate (Mcf/d)



**TRILOBITE  
TESTING, INC**

# DRILL STEM TEST REPORT

**FLUID SUMMARY**

Abercrombie Energy, LLC

**9-20s-34w Scott Co. KS**

10209 W Central STE 2  
Wichita KS, 67212

**Moore 1-9**

Job Ticket: 48920

**DST#: 1**

ATTN: Wes Hanson

Test Start: 2012.11.08 @ 22:40:00

## Mud and Cushion Information

Mud Type: Gel Chem

Cushion Type:

Oil API:

deg API

Mud Weight: 9.00 lb/gal

Cushion Length:

ft

Water Salinity:

30000 ppm

Viscosity: 48.00 sec/qt

Cushion Volume:

bbbl

Water Loss: 9.59 in<sup>3</sup>

Gas Cushion Type:

Resistivity: ohm.m

Gas Cushion Pressure:

psig

Salinity: 6000.00 ppm

Filter Cake: 1.00 inches

## Recovery Information

Recovery Table

Length ft	Description	Volume bbbl
76.00	w cm 10%W 90%m	1.066
310.00	mcw 40%M 60%w	4.348
124.00	mcw 10%M 90%w	1.739

Total Length: 510.00 ft      Total Volume: 7.153 bbl

Num Fluid Samples: 0

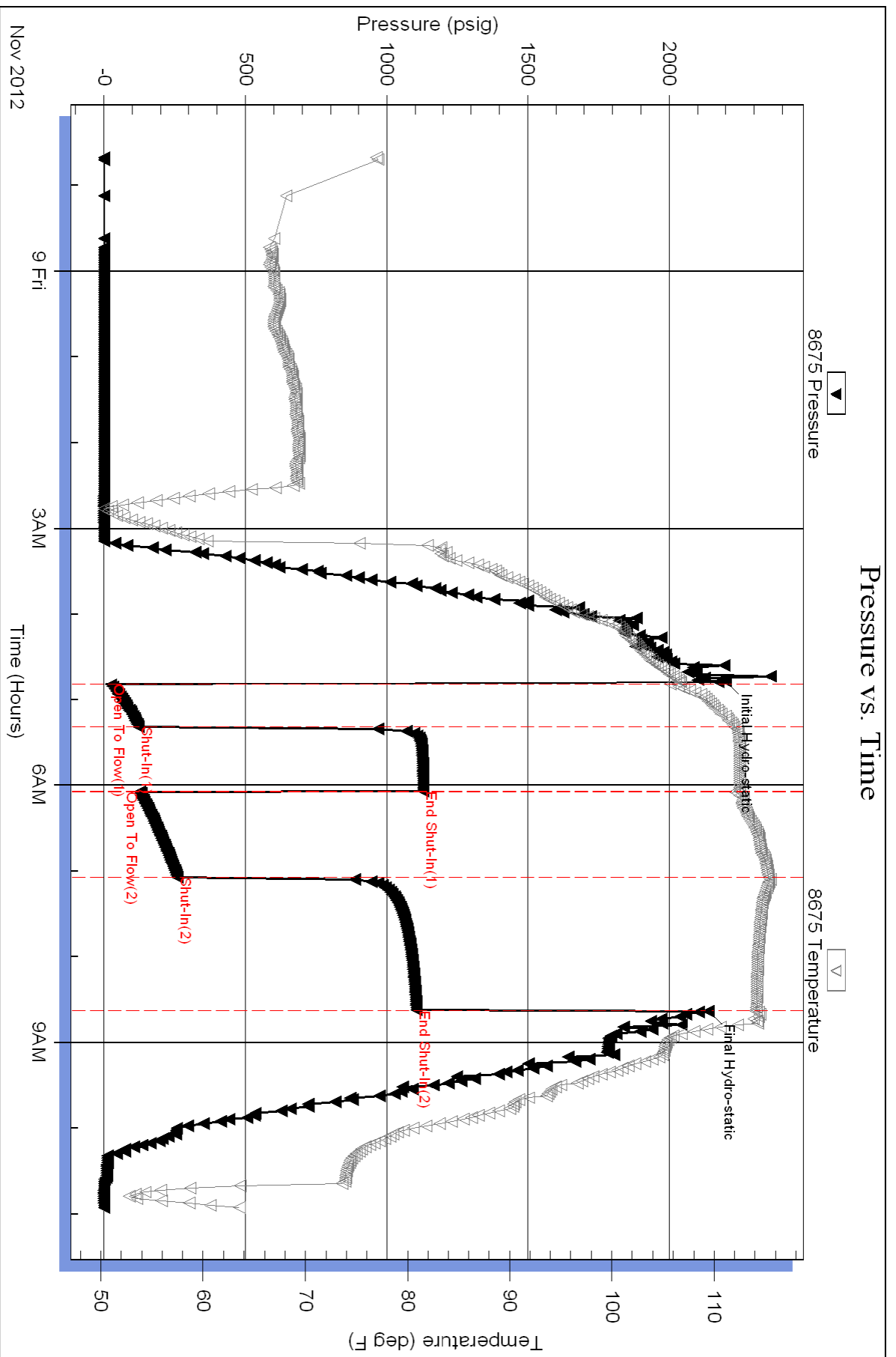
Num Gas Bombs: 0

Serial #:

Laboratory Name:

Laboratory Location:

Recovery Comments: rw: .30 @ 60 F = 30,000







**TRILOBITE  
TESTING, INC**

# DRILL STEM TEST REPORT

Abercrombie Energy, LLC

**9-20s-34w Scott Co. KS**

10209 W Central STE 2  
Wichita KS, 67212

**Moore 1-9**

Job Ticket: 48921

**DST#: 2**

ATTN: Wes Hanson

Test Start: 2012.11.10 @ 04:15:00

## GENERAL INFORMATION:

Formation: **Marmaton**

Deviated: No Whipstock: ft (KB)

Time Tool Opened: 06:35:15

Time Test Ended: 13:54:30

Test Type: Conventional Bottom Hole (Reset)

Tester: Jace McKinney

Unit No: 46

**Interval: 4483.00 ft (KB) To 4500.00 ft (KB) (TVD)**

Reference Elevations: 3069.00 ft (KB)

Total Depth: 4500.00 ft (KB) (TVD)

3059.00 ft (CF)

Hole Diameter: 7.88 inches Hole Condition: Fair

KB to GR/CF: 10.00 ft

**Serial #: 8675 Inside**

Press @ Run Depth: 745.97 psig @ 4484.00 ft (KB)

Capacity: 8000.00 psig

Start Date: 2012.11.10

End Date:

2012.11.10

Last Calib.:

2012.11.10

Start Time: 04:15:15

End Time:

13:54:30

Time On Btm:

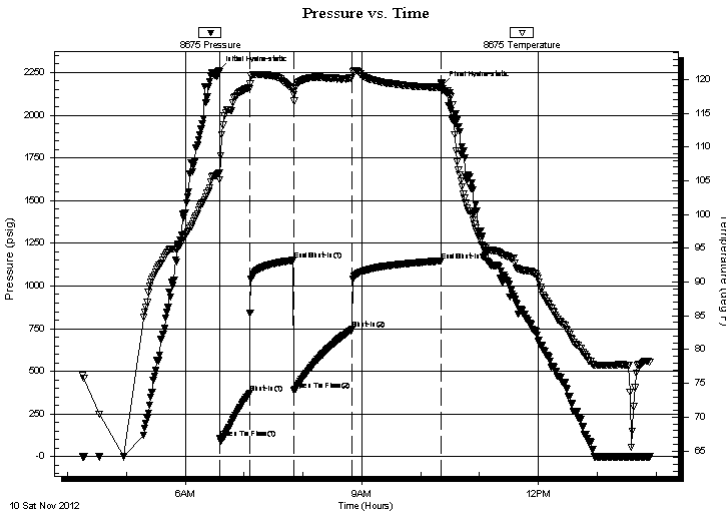
2012.11.10 @ 06:34:00

Time Off Btm:

2012.11.10 @ 10:21:45

**TEST COMMENT:** B.O.B. in 1 min  
Bled off for 5 min. B.O.B. in 12 min.  
B.O.B. in 2 1/2 min.  
Bled off for 5 min. B.O.B. in 23 min.

## PRESSURE SUMMARY



Time (Min.)	Pressure (psig)	Temp (deg F)	Annotation
0	2262.09	106.09	Initial Hydro-static
2	106.59	105.08	Open To Flow (1)
32	373.39	118.59	Shut-In(1)
77	1150.24	118.50	End Shut-In(1)
77	391.51	117.75	Open To Flow (2)
136	745.97	120.22	Shut-In(2)
227	1145.34	118.80	End Shut-In(2)
228	2171.62	118.45	Final Hydro-static

## Recovery

Length (ft)	Description	Volume (bbl)
0.00	2108 Feet Gas In Pipe	0.00
640.00	gco 10%G 90%O	8.98
620.00	gco 30%G 70%O	8.70
864.00	gco 15%G 85%O	12.12
186.00	mcw go 10%M 20%W 30%G 40%O	2.61

## Gas Rates

	Choke (inches)	Pressure (psig)	Gas Rate (Mcf/d)

\* Recovery from multiple tests





**TRILOBITE**  
TESTING, INC

# DRILL STEM TEST REPORT

**FLUID SUMMARY**

Abercrombie Energy, LLC

**9-20s-34w Scott Co. KS**

10209 W Central STE 2  
Wichita KS, 67212

**Moore 1-9**

Job Ticket: 48921

**DST#: 2**

ATTN: Wes Hanson

Test Start: 2012.11.10 @ 04:15:00

## Mud and Cushion Information

Mud Type: Gel Chem

Cushion Type:

Oil API:

34 deg API

Mud Weight: 9.00 lb/gal

Cushion Length:

ft

Water Salinity:

ppm

Viscosity: 54.00 sec/qt

Cushion Volume:

bbbl

Water Loss: 7.99 in<sup>3</sup>

Gas Cushion Type:

Resistivity: ohm.m

Gas Cushion Pressure:

psig

Salinity: 5300.00 ppm

Filter Cake: 1.00 inches

## Recovery Information

Recovery Table

Length ft	Description	Volume bbl
0.00	2108 Feet Gas In Pipe	0.000
640.00	gco 10%G 90%O	8.978
620.00	gco 30%G 70%O	8.697
864.00	gco 15%G 85%O	12.120
186.00	mcw go 10%M 20%W 30%G 40%O	2.609

Total Length: 2310.00 ft      Total Volume: 32.404 bbl

Num Fluid Samples: 0

Num Gas Bombs: 0

Serial #:

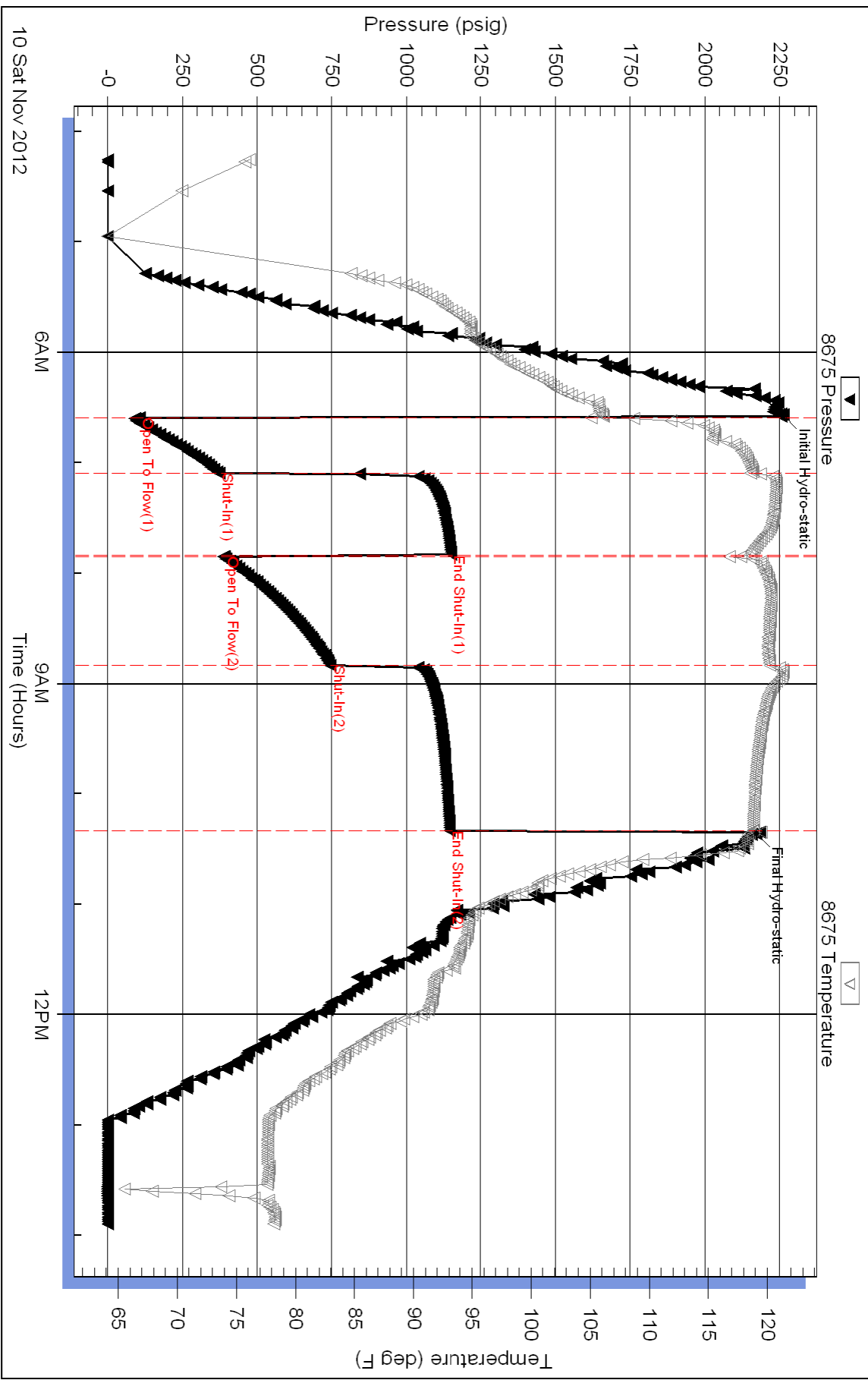
Laboratory Name:

Laboratory Location:

Recovery Comments: API: 35 @ 70 F = 34

RW: .20 @ 70 F = 35,000

# Pressure vs. Time

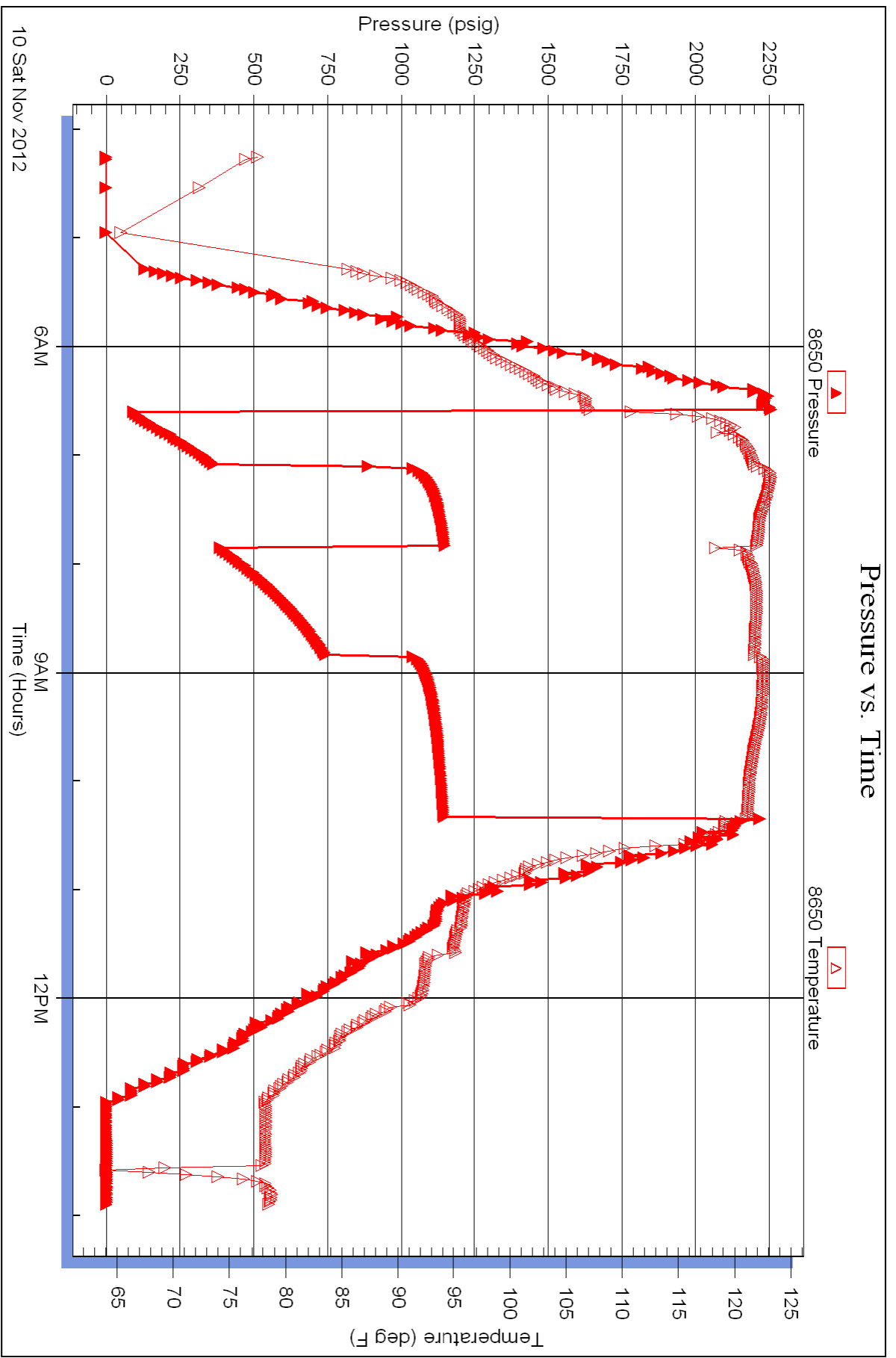


Serial #: 8650

Outside Abercrombie Energy, LLC

Moore 1-9

DST Test Number: 2





**TRILOBITE TESTING, INC.**

# DRILL STEM TEST REPORT

Abercrombie Energy, LLC

**9-20s-34w Scott Co. KS**

10209 W Central STE 2  
Wichita KS, 67212

**Moore 1-9**

Job Ticket: 48922

**DST#: 3**

ATTN: Wes Hanson

Test Start: 2012.11.11 @ 03:20:00

## GENERAL INFORMATION:

Formation: **Pawnee (Beymer)**

Deviated: No Whipstock: ft (KB)

Time Tool Opened: 06:28:45

Time Test Ended: 10:21:15

Test Type: Conventional Bottom Hole (Reset)

Tester: Jace McKinney

Unit No: 46

**Interval: 4540.00 ft (KB) To 4563.00 ft (KB) (TVD)**

Reference Elevations: 3069.00 ft (KB)

Total Depth: 4563.00 ft (KB) (TVD)

3059.00 ft (CF)

Hole Diameter: 7.88 inches Hole Condition: Fair

KB to GR/CF: 10.00 ft

**Serial #: 8675**

**Inside**

Press @ Run Depth: 56.58 psig @ 4541.00 ft (KB)

Capacity: 8000.00 psig

Start Date: 2012.11.11

End Date:

2012.11.11

Last Calib.:

2012.11.11

Start Time: 03:20:15

End Time:

10:21:15

Time On Btm:

2012.11.11 @ 06:27:45

Time Off Btm:

2012.11.11 @ 08:37:15

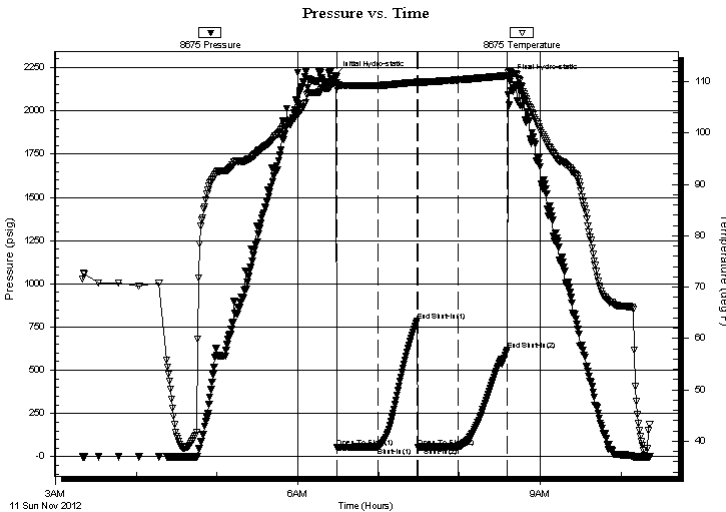
**TEST COMMENT:** Weak surface blow, Died in 20 min.

No return blow

No blow

No return blow

## PRESSURE SUMMARY



Time (Min.)	Pressure (psig)	Temp (deg F)	Annotation
0	2204.33	109.82	Initial Hydro-static
1	55.10	108.58	Open To Flow (1)
32	56.00	109.25	Shut-In(1)
61	785.94	109.88	End Shut-In(1)
62	56.43	109.56	Open To Flow (2)
91	56.58	110.32	Shut-In(2)
128	617.26	111.15	End Shut-In(2)
130	2188.02	111.97	Final Hydro-static

## Recovery

Length (ft)	Description	Volume (bbl)
75.00	100%Mud with few oil spots	1.05

\* Recovery from multiple tests

## Gas Rates

Choke (inches)	Pressure (psig)	Gas Rate (Mcf/d)



**TRILOBITE  
TESTING, INC.**

# DRILL STEM TEST REPORT

**FLUID SUMMARY**

Abercrombie Energy, LLC

**9-20s-34w Scott Co. KS**

10209 W Central STE 2  
Wichita KS, 67212

**Moore 1-9**

Job Ticket: 48922

**DST#: 3**

ATTN: Wes Hanson

Test Start: 2012.11.11 @ 03:20:00

## Mud and Cushion Information

Mud Type: Gel Chem

Cushion Type:

Oil API:

deg API

Mud Weight: 9.00 lb/gal

Cushion Length:

ft

Water Salinity:

ppm

Viscosity: 54.00 sec/qt

Cushion Volume:

bbbl

Water Loss: 8.79 in<sup>3</sup>

Gas Cushion Type:

Resistivity: ohm.m

Gas Cushion Pressure:

psig

Salinity: 6000.00 ppm

Filter Cake: 1.00 inches

## Recovery Information

Recovery Table

Length ft	Description	Volume bbl
75.00	100%Mud w ith few oil spots	1.052

Total Length: 75.00 ft      Total Volume: 1.052 bbl

Num Fluid Samples: 0

Num Gas Bombs: 0

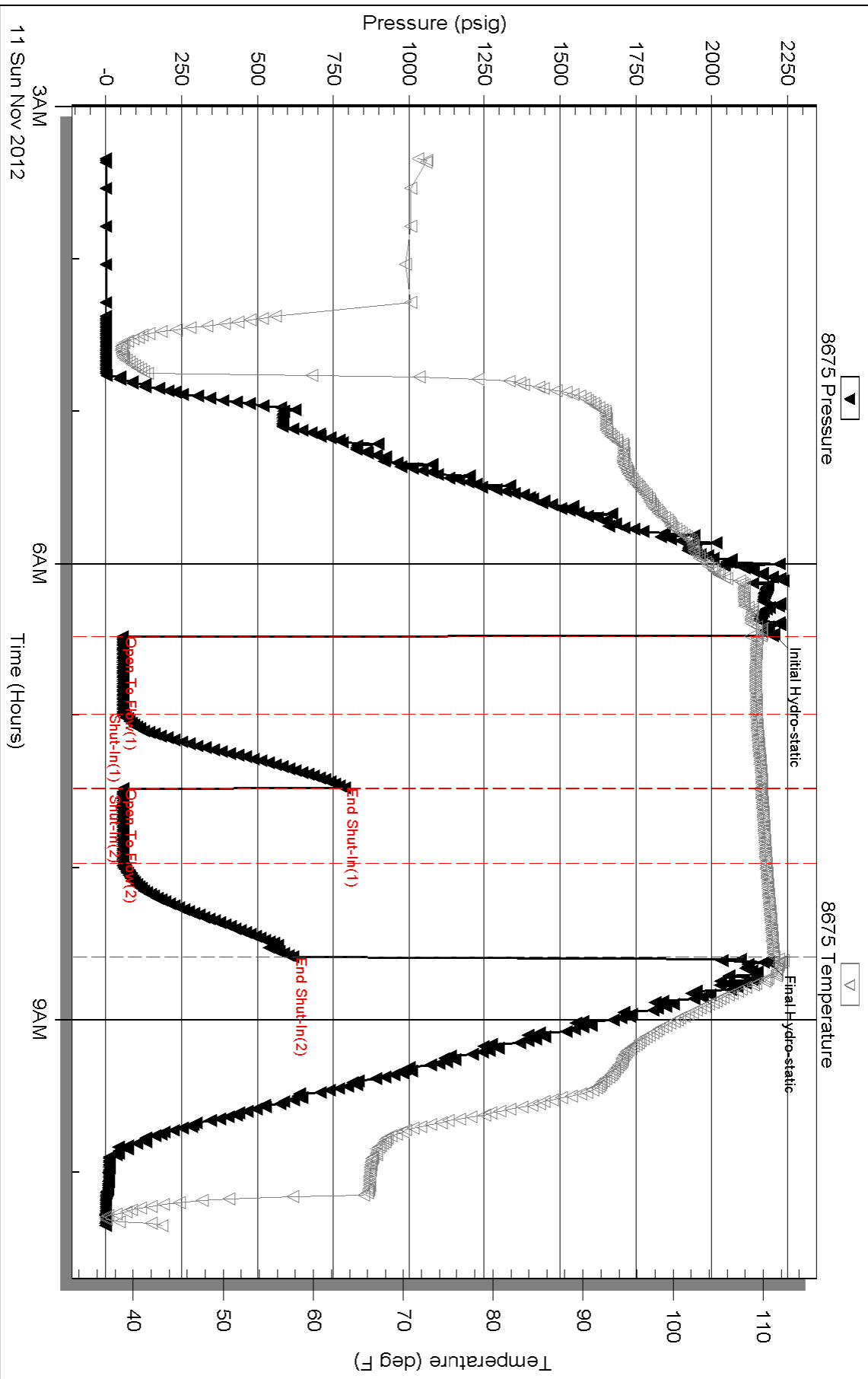
Serial #:

Laboratory Name:

Laboratory Location:

Recovery Comments:

### Pressure vs. Time







**TRILOBITE  
TESTING, INC.**

# DRILL STEM TEST REPORT

Abercrombie Energy, LLC

**9-20s-34w Scott Co. KS**

10209 W Central STE 2  
Wichita KS, 67212

**Moore 1-9**

Job Ticket: 48923

**DST#: 4**

ATTN: Wes Hanson

Test Start: 2012.11.11 @ 20:10:00

## GENERAL INFORMATION:

Formation: **Fort Scott (Johnson)**

Deviated: No Whipstock: ft (KB)

Time Tool Opened: 22:16:30

Time Test Ended: 03:29:00

Test Type: Conventional Bottom Hole (Reset)

Tester: Jace McKinney

Unit No: 46

**Interval: 4564.00 ft (KB) To 4595.00 ft (KB) (TVD)**

Reference Elevations: 3069.00 ft (KB)

Total Depth: 4595.00 ft (KB) (TVD)

3059.00 ft (CF)

Hole Diameter: 7.88 inches Hole Condition: Fair

KB to GR/CF: 10.00 ft

**Serial #: 8675 Inside**

Press @ Run Depth: 31.49 psig @ 4565.00 ft (KB)

Capacity: 8000.00 psig

Start Date: 2012.11.11

End Date:

2012.11.12

Last Calib.:

2012.11.12

Start Time: 20:10:15

End Time:

03:29:00

Time On Btm:

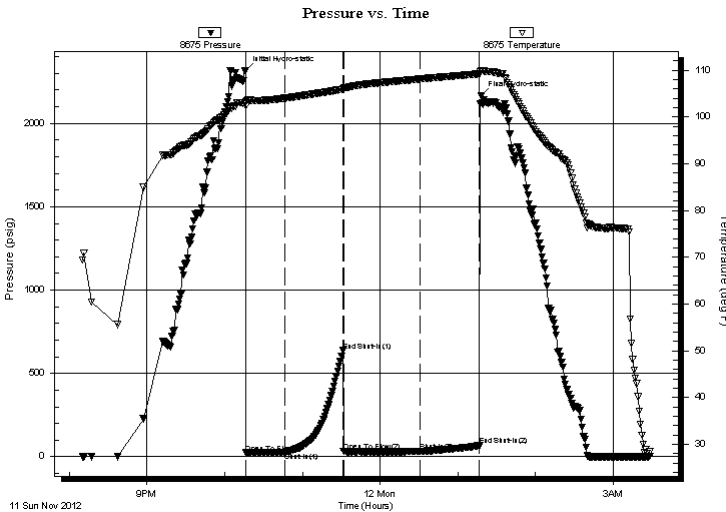
2012.11.11 @ 22:16:15

Time Off Btm:

2012.11.12 @ 01:18:15

**TEST COMMENT:** Built to 1" blow  
No return blow  
Weak surface blow  
No return blow

## PRESSURE SUMMARY



Time (Min.)	Pressure (psig)	Temp (deg F)	Annotation
0	2316.51	103.31	Initial Hydro-static
1	23.67	102.46	Open To Flow (1)
30	28.49	103.98	Shut-In(1)
75	636.63	105.92	End Shut-In(1)
76	30.83	105.95	Open To Flow (2)
135	31.49	108.11	Shut-In(2)
181	66.03	109.20	End Shut-In(2)
182	2164.44	109.95	Final Hydro-static

## Recovery

Length (ft)	Description	Volume (bbl)
30.00	100% Mud with oil spots	0.42

\* Recovery from multiple tests

## Gas Rates

Choke (inches)	Pressure (psig)	Gas Rate (Mcf/d)



**TRILOBITE  
TESTING, INC.**

# DRILL STEM TEST REPORT

**FLUID SUMMARY**

Abercrombie Energy, LLC

**9-20s-34w Scott Co. KS**

10209 W Central STE 2  
Wichita KS, 67212

**Moore 1-9**

Job Ticket: 48923

**DST#: 4**

ATTN: Wes Hanson

Test Start: 2012.11.11 @ 20:10:00

## Mud and Cushion Information

Mud Type: Gel Chem

Cushion Type:

Oil API:

deg API

Mud Weight: 9.00 lb/gal

Cushion Length:

ft

Water Salinity:

ppm

Viscosity: 57.00 sec/qt

Cushion Volume:

bbbl

Water Loss: 8.79 in<sup>3</sup>

Gas Cushion Type:

Resistivity: ohm.m

Gas Cushion Pressure:

psig

Salinity: 7500.00 ppm

Filter Cake: 1.00 inches

## Recovery Information

Recovery Table

Length ft	Description	Volume bbl
30.00	100% Mud with oil spots	0.421

Total Length: 30.00 ft      Total Volume: 0.421 bbl

Num Fluid Samples: 0

Num Gas Bombs: 0

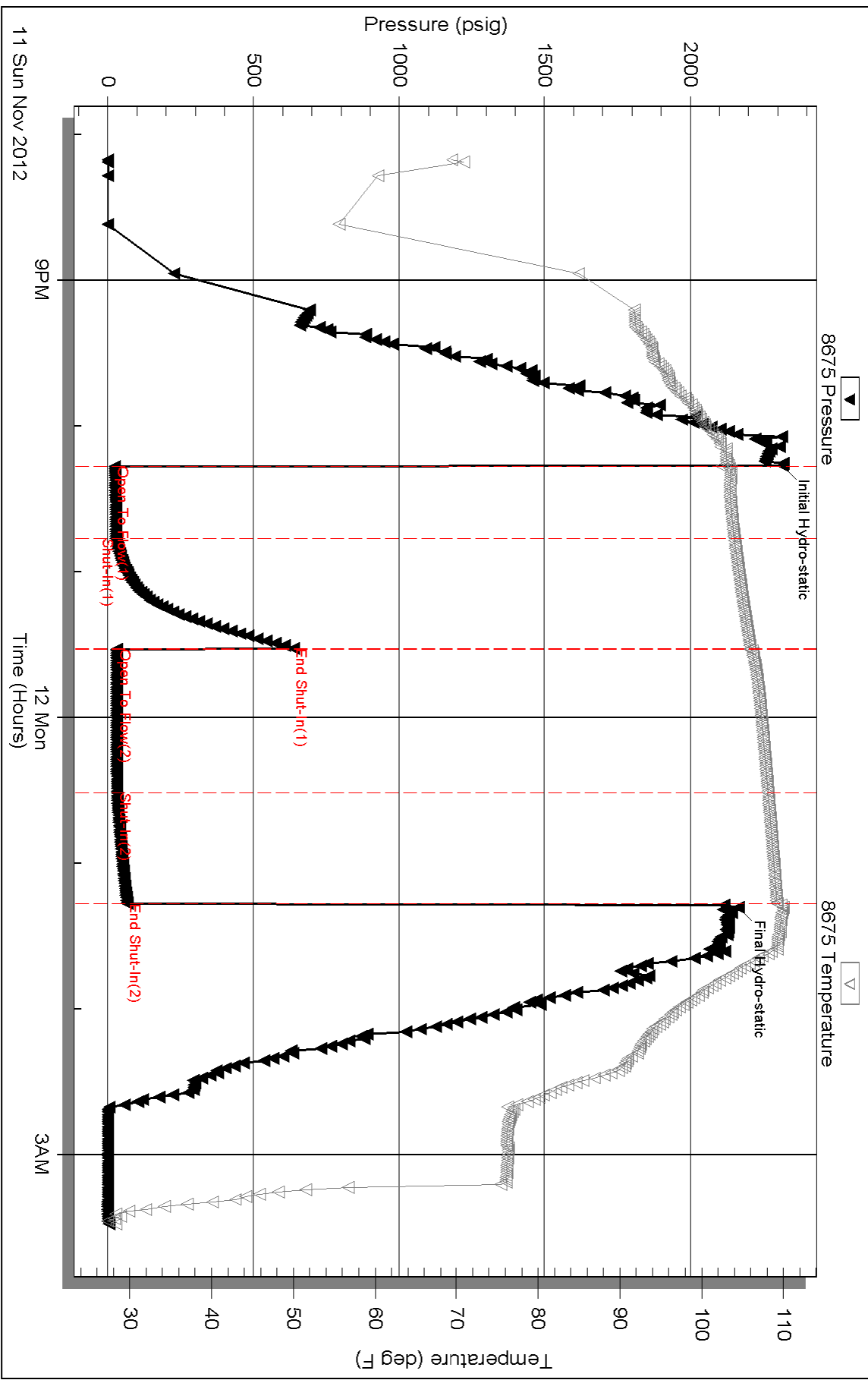
Serial #:

Laboratory Name:

Laboratory Location:

Recovery Comments:

### Pressure vs. Time



Conservation Division  
Finney State Office Building  
130 S. Market, Rm. 2078  
Wichita, KS 67202-3802



Phone: 316-337-6200  
Fax: 316-337-6211  
<http://kcc.ks.gov/>

Mark Sievers, Chairman  
Thomas E. Wright, Commissioner  
Shari Feist Albrecht, Commissioner

Sam Brownback, Governor

November 20, 2012

Gary Misak  
Abercrombie Energy, LLC  
10209 W. CENTRAL, STE 2  
WICHITA, KS 67212

Re: ACO1  
API 15-171-20918-00-00  
MOORE 1-9  
SE/4 Sec.09-20S-34W  
Scott County, Kansas

Dear Production Department:

We are herewith requesting that the Well Completion Form ACO-1 and attached information for the subject well be held confidential for a period of two years.

Should you have any questions or need additional information regarding subject well, please contact our office.

Respectfully,  
Gary Misak



# INVOICE

PO Box 93999  
Southlake, TX 76092

Invoice Number: 133604  
Invoice Date: Nov 14, 2012  
Page: 1

Voice: (817) 546-7282  
Fax: (817) 246-3361

RECEIVED  
DEC - 3 '12  
GB  
DEC - 5 2012



**Bill To:**  
Abercrombie Energy, LLC  
5510 Oil Center RD South  
Great Bend, KS 67530

Customer ID	Well Name/# or Customer P.O.	Payment Terms	
Aber	Moore #1-9	Net 30 Days	
Job Location	Camp Location	Service Date	Due Date
KS1-02	Oakley	Nov 14, 2012	12/14/12

Quantity	Item	Description	Unit Price	Amount
295.00	MAT	ASC	20.90	6,165.50
1,475.00	MAT	Gilsonite	0.98	1,445.50
12.00	MAT	Super Flush	58.70	704.40
375.47	SER	Cubic Feet	2.48	931.17
1,066.65	SER	Ton Mileage	2.60	2,773.29
1.00	SER	Production Casing	2,765.75	2,765.75
65.00	SER	Pump Truck Mileage	7.70	500.50
1.00	SER	Manifold Head Rental	275.00	275.00
65.00	SER	Light Vehicle Mileage	4.40	286.00
1.00	EQP	5.5 AFU Float Shoe	636.48	636.48
1.00	EQP	5.5 AFU Float Shoe	324.09	324.09
12.00	EQP	5.5 Centralizer	57.33	687.96
3.00	EQP	5.5 Basket	394.29	1,182.87
1.00	EQP	5.5 Port Collar	3,042.00	3,042.00
1.00	CEMENTER	Darren Racette		
1.00	EQUIP OPER	Tyler Flipse		
1.00	OPER ASSIST	Brandon Wilkinson		

VENDOR NUMBER  
VOUCHER NUMBER  
YEAR OF RECEIPT  
CODE NUMBER  
1352062  
MOORE #1-9  
CEMENT BOTM STAGE  
APPROVAL  
VERIFIED ACCURACY

Subtotal	21,720.51
Sales Tax	1,177.67
Total Invoice Amount	22,898.18
Payment/Credit Applied	
<b>TOTAL</b>	<b>22,898.18</b>

ALL PRICES ARE NET, PAYABLE  
30 DAYS FOLLOWING DATE OF  
INVOICE. 1 1/2% CHARGED  
THEREAFTER. IF ACCOUNT IS  
CURRENT, TAKE DISCOUNT OF

\$ 4995.71

ONLY IF PAID ON OR BEFORE  
Dec 9, 2012

- 4995.71  
17902.47



# ALLIED

OIL & GAS SERVICES, LLC

COPY

# INVOICE

PO Box 93999  
Southlake, TX 76092

Invoice Number: 133416  
Invoice Date: Nov 2, 2012  
Page: 1

Voice: (817) 546-7282  
Fax: (817) 246-3361

RECEIVED  
NOV 26 '12  
GB



<b>Bill To:</b>
Abercrombie Energy, LLC 5510 Oil Center RD South Great Bend, KS 67530

Customer ID	Well Name/# or Customer P.O.	Payment Terms	
Aber	Moore #1-9	Net 30 Days	
Job Location	Camp Location	Service Date	Due Date
KS1-01	Oakley	Nov 2, 2012	12/2/12

Quantity	Item	Description	Unit Price	Amount
190.00	MAT	Class A Common	17.90	3,401.00
4.00	MAT	Gel	23.40	93.60
7.00	MAT	Chloride	64.00	448.00
205.45	SER	Cubic Feet	2.48	509.51
609.05	SER	Ton Mileage	2.60	1,583.53
1.00	SER	Surface	1,512.25	1,512.25
65.00	SER	Pump Truck Mileage	7.70	500.50
1.00	SER	Manifold Head Rental	275.00	275.00
65.00	SER	Light Vehicle Mileage	4.40	286.00
1.00	CEMENTER	Andrew Forslund		
1.00	EQUIP OPER	Dane Retzloff		
1.00	OPER ASSIST	Kevin Ryan		
		VENDOR NUMBER	_____	
		VENDOR NUMBER	_____	
		VERIFY OF RECEIPT	_____	
		CODE NUMBER	AMOUNT	
		1352062	_____	
		MOORE #1-9	_____	
		CEMENT SURFACE CSG	_____	
		APPROVAL	_____	
		VERIFIED ACCURACY	_____	

Subtotal	8,609.39
Sales Tax	327.24
Total Invoice Amount	8,936.63
Payment/Credit Applied	
<b>TOTAL</b>	<b>8,936.63</b>

ALL PRICES ARE NET, PAYABLE 30 DAYS FOLLOWING DATE OF INVOICE. 1 1/2% CHARGED THEREAFTER. IF ACCOUNT IS CURRENT, TAKE DISCOUNT OF

**\$ 2066.25**

ONLY IF PAID ON OR BEFORE  
**Nov 27, 2012**

00280 000







# INVOICE

PO Box 93999  
Southlake, TX 76092

Invoice Number: 133701

Invoice Date: Nov 20, 2012

Page: 1

Voice: (817) 546-7282

Fax: (817) 246-3361

RECEIVED

DEC - 3 '12

GB

DEC - 5 2012



**Bill To:**  
Abercrombie Energy, LLC  
5510 Oil Center RD South  
Great Bend, KS 67530

Customer ID	Well Name/# or Customer P.O.	Payment Terms	
Aber	Moore #1-9	Net 30 Days	
Job Location	Camp Location	Service Date	Due Date
KS1-04	Oakley	Nov 20, 2012	12/20/12

Quantity	Item	Description	Unit Price	Amount
450.00	MAT	Lightweight	15.95	7,177.50
112.00	MAT	Flo Seal	2.97	332.64
509.10	SER	Cubic Feet	2.48	1,262.56
1,361.75	SER	Ton Mileage	2.60	3,540.55
1.00	SER	Port Collar	2,483.59	2,483.59
65.00	SER	Pump Truck Mileage	7.70	500.50
65.00	SER	Light Vehicle Mileage	4.40	286.00
1.00	CEMENTER	Andrew Forslund		
1.00	EQUIP OPER	Daniel Casper		
1.00	OPER ASSIST	Chris Helpingstine		
		VENDOR NUMBER	_____	
		VOUCHER NUMBER	_____	
		TYPE OF RECEIPT	_____	
		CODE NUMBER	AMOUNT	
		1352062	_____	
		MOORE #1-9	_____	
		CEMENT PORT COLLAR	_____	
		APPROVAL	_____	
		VERIFIED ACCURACY	_____	

Subtotal	15,583.34
Sales Tax	623.34
Total Invoice Amount	16,206.68
Payment/Credit Applied	
<b>TOTAL</b>	<b>16,206.68</b>

ALL PRICES ARE NET, PAYABLE 30 DAYS FOLLOWING DATE OF INVOICE. 1 1/2% CHARGED THEREAFTER. IF ACCOUNT IS CURRENT, TAKE DISCOUNT OF

\$ 3,428.33

ONLY IF PAID ON OR BEFORE  
Dec 15, 2012

-3428.33  
12776.35

# ALLIED OIL & GAS SERVICES, LLC 060076

Federal Tax I.D. # 20-8661476

REMIT TO: P.O. BOX 93999  
SOUTHLAKE, TEXAS 76092

SERVICE POINT:  
oakley

DATE <u>11-20-12</u>	SEC. <u>9</u>	TWP. <u>20S</u>	RANGE <u>34W</u>	CALLED OUT	ON LOCATION	JOB START <u>7:00 PM</u>	JOB FINISH <u>3:00 PM</u>
LEASE <u>Moore</u>	WELL # <u>1-9</u>	LOCATION <u>shallow water 9W</u>	COUNTY <u>Scott</u>			STATE <u>KS</u>	
OLD OR NEW (Circle one)			<u>3.5 1/4 1/4 N 1/4</u>		<u>1.04</u>		<u>8.3</u>

CONTRACTOR cheyenne well service OWNER same

TYPE OF JOB port collar

HOLE SIZE \_\_\_\_\_ TD \_\_\_\_\_ CEMENT \_\_\_\_\_

CASING SIZE \_\_\_\_\_ DEPTH \_\_\_\_\_ AMOUNT ORDERED 450 sks lite

TUBING SIZE 2 7/8 DEPTH 226' 1/2" flo-seal

DRILL PIPE \_\_\_\_\_ DEPTH \_\_\_\_\_

TOOL \_\_\_\_\_ DEPTH \_\_\_\_\_

PRES. MAX \_\_\_\_\_ MINIMUM \_\_\_\_\_ COMMON \_\_\_\_\_ @ \_\_\_\_\_

MEAS. LINE \_\_\_\_\_ SHOE JOINT \_\_\_\_\_ POZMIX \_\_\_\_\_ @ \_\_\_\_\_

CEMENT LEFT IN CSG. \_\_\_\_\_ GEL \_\_\_\_\_ @ \_\_\_\_\_

PERFS. \_\_\_\_\_ CHLORIDE \_\_\_\_\_ @ \_\_\_\_\_

DISPLACEMENT 13.14 BBL EQUIPMENT 450 sks lite @ 15.95 7177.50

PUMP TRUCK CEMENTER Andrew Holard Flo-seal 112# @ 7.92 3371.64

HELPER Andrew Daniel @ \_\_\_\_\_

BULK TRUCK DRIVER Chris Holangame @ \_\_\_\_\_

BULK TRUCK DRIVER \_\_\_\_\_ @ \_\_\_\_\_

HANDLING 509.1 cu/ft @ 2.48 1262.56

MILEAGE 2100 ten/mile @ 20.81 3542.55

TOTAL 12313.25

**REMARKS:**

pressure system initially held open port collar  
take injection rate of 1 BBL/min. 2000 psi, mix  
450 sks lite, and displace 9000 LIT  
pressure, close port collar. pressure  
system 1200 psi hold, run 4 points  
Reverse clean.  
Cement did not circulate.

1361.75

**SERVICE**

DEPTH OF JOB	<u>226'</u>	
PUMP TRUCK CHARG		<u>2483.59</u>
EXTRA FOOTAGE	@	
MILEAGE <u>6.5 miles</u>	@ <u>2.20</u>	<u>540.50</u>
MANIFOLD	@	
<u>high vehicle</u>	@ <u>4.40</u>	<u>286.00</u>

TOTAL 3220.09

CHARGE TO: Abercrombie

TREET \_\_\_\_\_

CITY \_\_\_\_\_ STATE \_\_\_\_\_ ZIP \_\_\_\_\_

**PLUG & FLOAT EQUIPMENT**

_____	@	_____
_____	@	_____
_____	@	_____
_____	@	_____
_____	@	_____

to: Allied Oil & Gas Services, LLC.  
You are hereby requested to rent cementing equipment  
and furnish cementer and helper(s) to assist owner or  
contractor to do work as is listed. The above work was  
done to satisfaction and supervision of owner agent or  
contractor. I have read and understand the "GENERAL  
TERMS AND CONDITIONS" listed on the reverse side.

PRINTED NAME Jason Schuler

SIGNATURE Jason Schuler

SALES TAX (If Any) 623.34 TOTAL \_\_\_\_\_

443.13

TOTAL CHARGES 15,583.34

DISCOUNT 3428.33 IF PAID IN 30 DAYS

12155.01 2270

cc: Jason 12-3-12