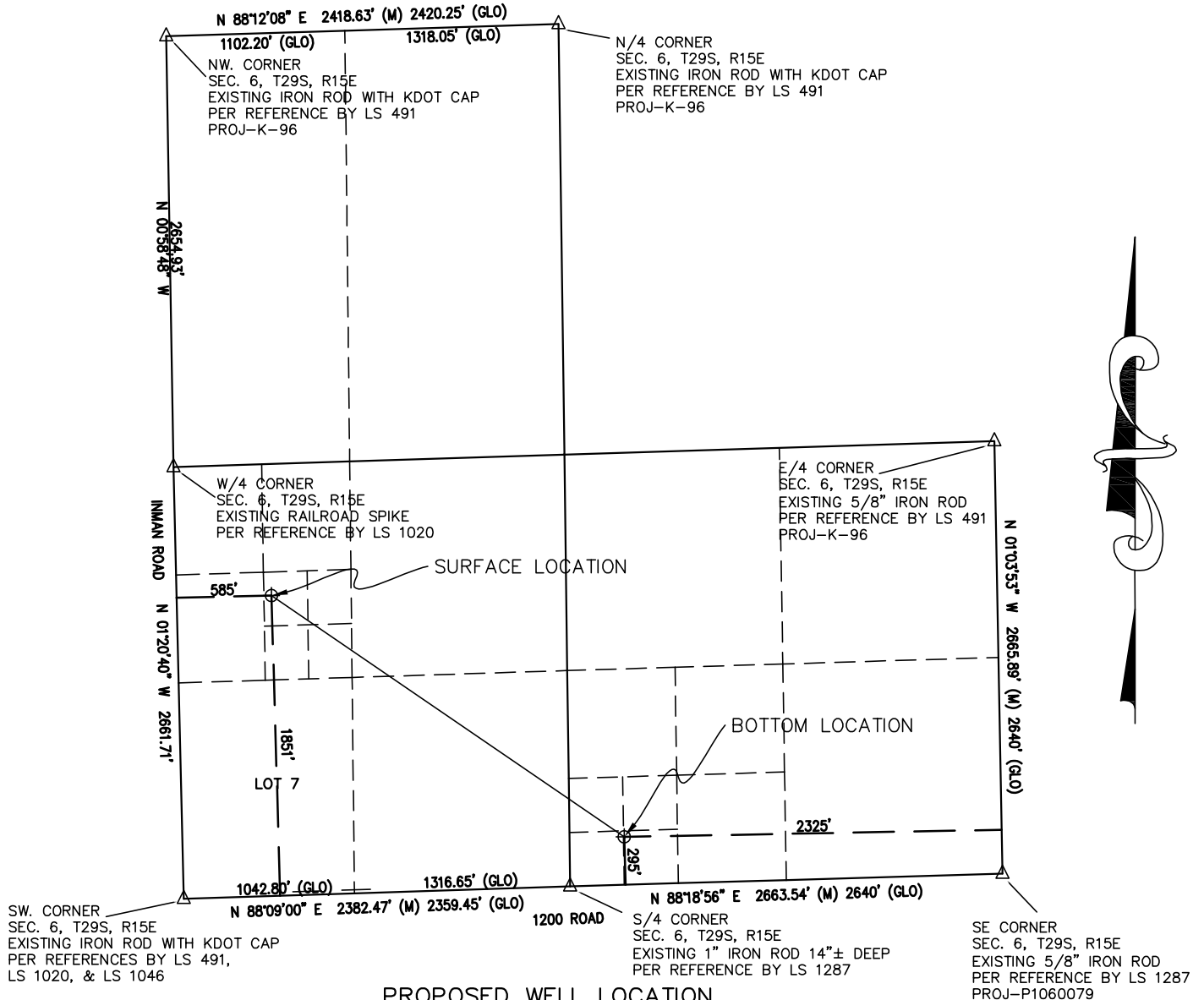


**WELL LOCATIONS -- TaylorHendry\_1\_Bart**  
**S/2 SECTION 6,**  
**TOWNSHIP 29 SOUTH, RANGE 15 EAST of the 6TH P.M.,**  
**WILSON COUNTY, KANSAS**  
 prepared for **Wilson County Holdings, LLC**  
 July 30, 2012



**PROPOSED WELL LOCATION**  
**WILSON COUNTY HOLDINGS, LLC**  
 TaylorHendry\_1\_Bart Surface

1851 ft. from the South Line & 585 ft. from the West Line  
 of the SW 1/4 of Section 6, Township 29 South, Range 15 East  
 of the 6th Principal Meridian, Wilson County, Kansas  
 Ground Elevation at staked location = 894' MSL

Latitude N 37° 32' 58.310" = 37.54953°  
 Longitude W 95° 48' 49.764" = 95.81382°  
 NW/4 SE/4 NW/4 SW4 Sec. 6-29S-15E

TaylorHendry\_1\_Bart Bottom

295 ft. from the South Line & 2325 ft. from the East Line  
 of the SE 1/4 of Section 6, Township 29 South, Range 15 East  
 of the 6th Principal Meridian, Wilson County, Kansas  
 Ground Elevation at staked location = 935' MSL

Latitude N 37° 32' 42.994" = 37.54528°  
 Longitude W 95° 48' 23.328" = 95.80648°  
 SE/4 SW/4 SW/4 SE4 Sec. 6-29S-15E



**SURVEYOR'S CERTIFICATION:**

I, R. Gary Walker, a duly licensed Land Surveyor in the State of Kansas, do hereby certify that the above described well location was staked on the ground, under my supervision as shown herein on July 27, 2012. This plat does not, in any way represent a "Boundary Survey."

R. Gary Walker, L.S. No. 1066

**CORNERSTONE REGIONAL**  
**SURVEYING, L.L.C.**  
 1921 North Penn  
 Independence, Kansas 67301  
 Ph: 620-331-6767

DRAWN BY: <i>RGW</i>	DATE: <i>JULY 30 2012</i>
CHECKED BY: <i>RGW</i>	DRAWING NO.: <i>1204075(Sec6)</i>
JOB NO.: <i>1-1204075-K</i>	SHEET <i>1</i> OF <i>1</i>