



**TRILOBITE TESTING, INC.**

# DRILL STEM TEST REPORT

Shakespeare Oil Co. Inc  
 202 W. Main St  
 Salem IL  
 62881  
 ATTN: Tim Priest

**26-16s-34w Scott Co**

**Janzen 1 26**

Job Ticket: 44445

**DST#: 1**

Test Start: 2012.10.06 @ 12:10:15

## GENERAL INFORMATION:

Formation: **B-C**

Deviated: No Whipstock: ft (KB)

Time Tool Opened: 14:09:15

Time Test Ended: 18:51:15

Test Type: Conventional Bottom Hole (Initial)

Tester: Mike Roberts

Unit No: 65

**Interval: 4066.00 ft (KB) To 4111.00 ft (KB) (TVD)**

Reference Elevations: 3114.00 ft (KB)

Total Depth: 4111.00 ft (KB) (TVD)

3109.00 ft (CF)

Hole Diameter: 7.88 inches Hole Condition: Fair

KB to GR/CF: 5.00 ft

**Serial #: 6668**

**Inside**

Press @ Run Depth: 522.08 psig @ 4069.00 ft (KB)

Capacity: 8000.00 psig

Start Date: 2012.10.06

End Date:

2012.10.06

Last Calib.: 2012.10.06

Start Time: 12:10:15

End Time:

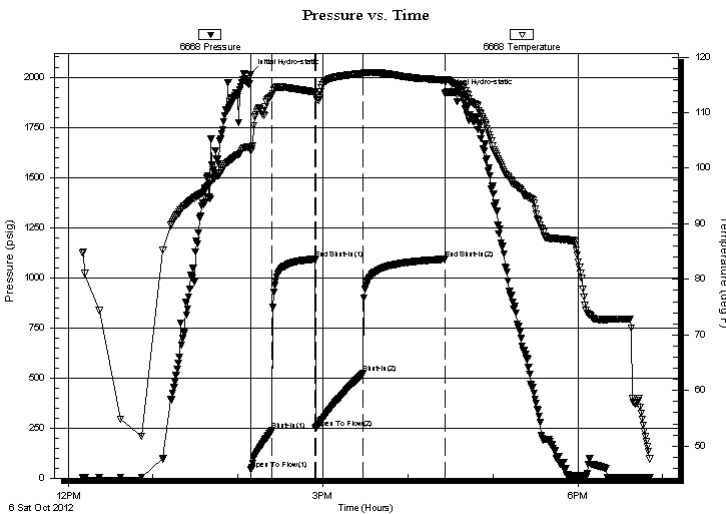
18:51:15

Time On Btm: 2012.10.06 @ 14:09:00

Time Off Btm: 2012.10.06 @ 16:26:30

TEST COMMENT: IF:BOB in 4 min.  
 IS:No return blow  
 FF:Built to 4" blow  
 FS:No return blow

## PRESSURE SUMMARY



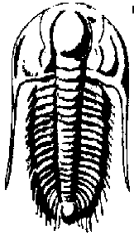
Time (Min.)	Pressure (psig)	Temp (deg F)	Annotation
0	2015.79	103.84	Initial Hydro-static
1	44.12	103.19	Open To Flow (1)
15	238.29	113.10	Shut-In(1)
46	1091.06	113.68	End Shut-In(1)
46	248.43	113.15	Open To Flow (2)
80	522.08	117.03	Shut-In(2)
137	1092.23	115.79	End Shut-In(2)
138	1918.84	115.84	Final Hydro-static

## Recovery

Length (ft)	Description	Volume (bbl)
310.00	mcsw 30% m 70% sw	2.97
1081.00	sw 100% sw	15.16

## Gas Rates

Choke (inches)	Pressure (psig)	Gas Rate (Mcf/d)



**TRILOBITE  
TESTING, INC.**

# DRILL STEM TEST REPORT

**FLUID SUMMARY**

Shakespeare Oil Co. Inc

**26-16s-34w Scott Co**

202 W. Main St  
Salem IL  
62881

**Janzen 1 26**

Job Ticket: 44445

**DST#: 1**

ATTN: Tim Priest

Test Start: 2012.10.06 @ 12:10:15

## Mud and Cushion Information

Mud Type: Gel Chem

Cushion Type:

Oil API:

0 deg API

Mud Weight: 9.00 lb/gal

Cushion Length:

ft

Water Salinity:

30000 ppm

Viscosity: 59.00 sec/qt

Cushion Volume:

bbbl

Water Loss: 6.79 in<sup>3</sup>

Gas Cushion Type:

Resistivity: 0.00 ohm.m

Gas Cushion Pressure:

psig

Salinity: 5000.00 ppm

Filter Cake: 1.00 inches

## Recovery Information

Recovery Table

Length ft	Description	Volume bbl
310.00	mcsw 30%m 70%sw	2.973
1081.00	sw 100%sw	15.164

Total Length: 1391.00 ft      Total Volume: 18.137 bbl

Num Fluid Samples: 0

Num Gas Bombs: 0

Serial #:

Laboratory Name:

Laboratory Location:

Recovery Comments: RW= .426@ 41.2\*= 30,000 ppm

Serial #: 6668

Inside

Shakespeare Oil Co. Inc

Janzen 1 26

DST Test Number: 1

