



**TRILOBITE  
TESTING, INC.**

# DRILL STEM TEST REPORT

Shakespeare Oil Co. Inc

**26-16s-34w Scott Co**

202 W. Main St  
Salem IL  
62881  
ATTN: Tim Priest

**Janzen 1 26**

Job Ticket: 44446

**DST#: 2**

Test Start: 2012.10.07 @ 04:33:15

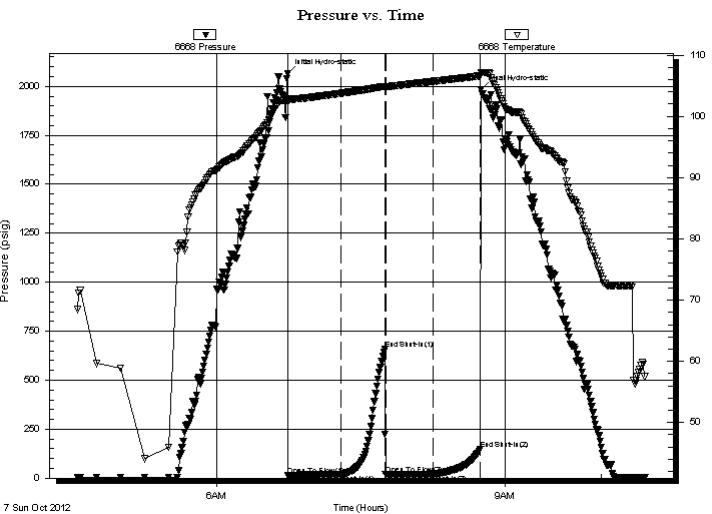
## GENERAL INFORMATION:

Formation: **E-F**  
 Deviated: No Whipstock: ft (KB)  
 Time Tool Opened: 06:44:45  
 Time Test Ended: 10:27:45  
 Interval: **4113.00 ft (KB) To 4135.00 ft (KB) (TVD)**  
 Total Depth: 4135.00 ft (KB) (TVD)  
 Hole Diameter: 7.88 inches Hole Condition: Fair  
 Test Type: Conventional Bottom Hole (Reset)  
 Tester: Mike Roberts  
 Unit No: 65  
 Reference Elevations: 3114.00 ft (KB)  
 3109.00 ft (CF)  
 KB to GR/CF: 5.00 ft

## Serial #: 6668

Press @ Run Depth: 20.56 psig @ ft (KB) Capacity: 8000.00 psig  
 Start Date: 2012.10.07 End Date: 2012.10.07 Last Calib.: 2012.10.07  
 Start Time: 04:33:15 End Time: 10:27:45 Time On Btm: 2012.10.07 @ 06:44:30  
 Time Off Btm: 2012.10.07 @ 08:45:15

TEST COMMENT: IF: Built to 1/2" blow  
 IS: No return blow  
 FF: No blow  
 FS: No return blow



## PRESSURE SUMMARY

Time (Min.)	Pressure (psig)	Temp (deg F)	Annotation
0	2066.58	102.94	Initial Hydro-static
1	15.45	102.46	Open To Flow (1)
34	18.41	103.78	Shut-In(1)
61	656.93	104.91	End Shut-In(1)
61	19.13	104.71	Open To Flow (2)
91	20.56	105.72	Shut-In(2)
120	148.73	106.61	End Shut-In(2)
121	1983.04	107.19	Final Hydro-static

## Recovery

Length (ft)	Description	Volume (bbl)
1.00	mud 100% m	0.00
1.00	oil 100% o	0.00

\* Recovery from multiple tests

## Gas Rates

Choke (inches)	Pressure (psig)	Gas Rate (Mcf/d)



**TRILOBITE  
TESTING, INC.**

# DRILL STEM TEST REPORT

**FLUID SUMMARY**

Shakespeare Oil Co. Inc

**26-16s-34w Scott Co**

202 W. Main St  
Salem IL  
62881

**Janzen 1 26**

Job Ticket: 44446

**DST#: 2**

ATTN: Tim Priest

Test Start: 2012.10.07 @ 04:33:15

## Mud and Cushion Information

Mud Type: Gel Chem

Cushion Type:

Oil API:

0 deg API

Mud Weight: 9.00 lb/gal

Cushion Length:

ft

Water Salinity:

0 ppm

Viscosity: 59.00 sec/qt

Cushion Volume:

bbbl

Water Loss: 6.80 in<sup>3</sup>

Gas Cushion Type:

Resistivity: 0.00 ohm.m

Gas Cushion Pressure:

psig

Salinity: 5000.00 ppm

Filter Cake: 1.00 inches

## Recovery Information

Recovery Table

Length ft	Description	Volume bbbl
1.00	mud 100%m	0.005
1.00	oil 100% o	0.005

Total Length: 2.00 ft      Total Volume: 0.010 bbl

Num Fluid Samples: 0

Num Gas Bombs: 0

Serial #:

Laboratory Name:

Laboratory Location:

Recovery Comments:

