



**TRILOBITE  
TESTING, INC.**

# DRILL STEM TEST REPORT

Shakespeare Oil Co. Inc

**26-16s-34w Scott Co**

202 W. Main St  
Salem IL  
62881  
ATTN: Tim Priest

**Janzen 1 26**

Job Ticket: 44447

**DST#: 3**

Test Start: 2012.10.07 @ 00:25:15

## GENERAL INFORMATION:

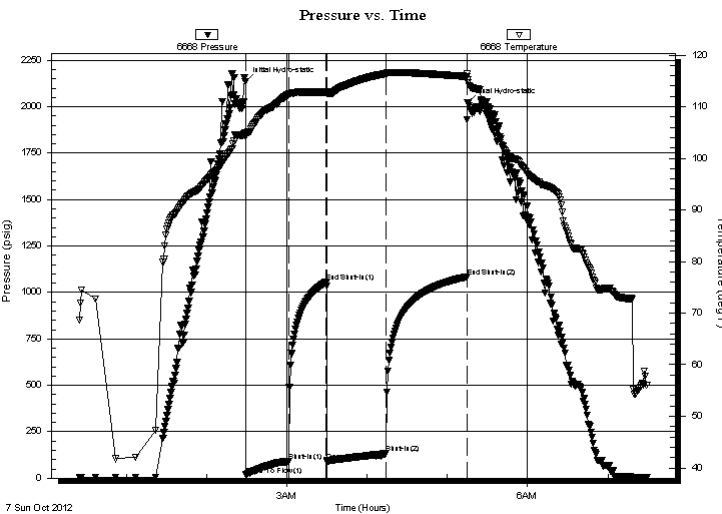
Formation: **H**  
 Deviated: No Whipstock: ft (KB)  
 Test Type: Conventional Bottom Hole (Reset)  
 Time Tool Opened: 02:29:30 Tester: Mike Roberts  
 Time Test Ended: 07:29:15 Unit No: 65  
 Interval: **4205.00 ft (KB) To 4235.00 ft (KB) (TVD)** Reference Elevations: 3114.00 ft (KB)  
 Total Depth: 4235.00 ft (KB) (TVD) 3109.00 ft (CF)  
 Hole Diameter: 7.88 inches Hole Condition: Fair KB to GR/CF: 5.00 ft

## Serial #: 6668

Inside

Press @ Run Depth: 132.22 psig @ 4208.00 ft (KB) Capacity: 8000.00 psig  
 Start Date: 2012.10.07 End Date: 2012.10.07 Last Calib.: 2012.10.08  
 Start Time: 00:25:15 End Time: 07:29:15 Time On Btm: 2012.10.07 @ 02:29:15  
 Time Off Btm: 2012.10.07 @ 05:15:15

TEST COMMENT: IF: Built to 7" blow  
 IS: No return blow  
 FF: Built to 8" blow  
 FS: No return blow



## PRESSURE SUMMARY

Time (Min.)	Pressure (psig)	Temp (deg F)	Annotation
0	2137.14	104.88	Initial Hydro-static
1	17.21	104.17	Open To Flow (1)
32	89.92	112.33	Shut-In(1)
61	1055.12	112.82	End Shut-In(1)
61	92.25	112.48	Open To Flow (2)
105	132.22	116.39	Shut-In(2)
166	1084.19	115.87	End Shut-In(2)
166	2020.85	115.12	Final Hydro-static

## Recovery

Length (ft)	Description	Volume (bbl)
181.00	mcsw 5% m 95% sw with spots of oil	1.16

\* Recovery from multiple tests

## Gas Rates

Choke (inches)	Pressure (psig)	Gas Rate (Mcf/d)



**TRILOBITE  
TESTING, INC.**

# DRILL STEM TEST REPORT

**FLUID SUMMARY**

Shakespeare Oil Co. Inc

**26-16s-34w Scott Co**

202 W. Main St  
Salem IL  
62881

**Janzen 1 26**

Job Ticket: 44447

**DST#: 3**

ATTN: Tim Priest

Test Start: 2012.10.07 @ 00:25:15

## Mud and Cushion Information

Mud Type: Gel Chem

Cushion Type:

Oil API:

0 deg API

Mud Weight: 9.00 lb/gal

Cushion Length:

ft

Water Salinity:

33000 ppm

Viscosity: 58.00 sec/qt

Cushion Volume:

bbbl

Water Loss: 7.79 in<sup>3</sup>

Gas Cushion Type:

Resistivity: 0.00 ohm.m

Gas Cushion Pressure:

psig

Salinity: 5500.00 ppm

Filter Cake: 1.00 inches

## Recovery Information

Recovery Table

Length ft	Description	Volume bbl
181.00	mcsw 5% m 95% sw with spots of oil	1.163

Total Length: 181.00 ft      Total Volume: 1.163 bbl

Num Fluid Samples: 0

Num Gas Bombs: 0

Serial #:

Laboratory Name:

Laboratory Location:

Recovery Comments: RW= .488@34.4\*= 33,000 ppm

