



**TRILOBITE  
TESTING, INC.**

# DRILL STEM TEST REPORT

Shakespeare Oil Co. Inc

**26-16s-34w Scott Co**

202 W. Main St  
Salem IL 62881

**Janzen 1 26**

Job Ticket: 44450

**DST#: 6**

ATTN: Tim Priest

Test Start: 2012.10.11 @ 06:12:15

## GENERAL INFORMATION:

Formation: **Marmaton**

Deviated: No Whipstock: ft (KB)

Time Tool Opened: 08:24:45

Time Test Ended: 14:29:00

Test Type: Conventional Bottom Hole (Reset)

Tester: Mike Roberts

Unit No: 65

**Interval: 4434.00 ft (KB) To 4460.00 ft (KB) (TVD)**

Reference Elevations: 3114.00 ft (KB)

Total Depth: 4460.00 ft (KB) (TVD)

3109.00 ft (CF)

Hole Diameter: 7.88 inches Hole Condition: Fair

KB to GR/CF: 5.00 ft

**Serial #: 6668**

**Inside**

Press @ Run Depth: 501.23 psig @ 4455.00 ft (KB)

Capacity: 8000.00 psig

Start Date: 2012.10.11

End Date:

2012.10.11

Last Calib.:

2012.10.11

Start Time:

06:12:15

End Time:

14:29:00

Time On Btm:

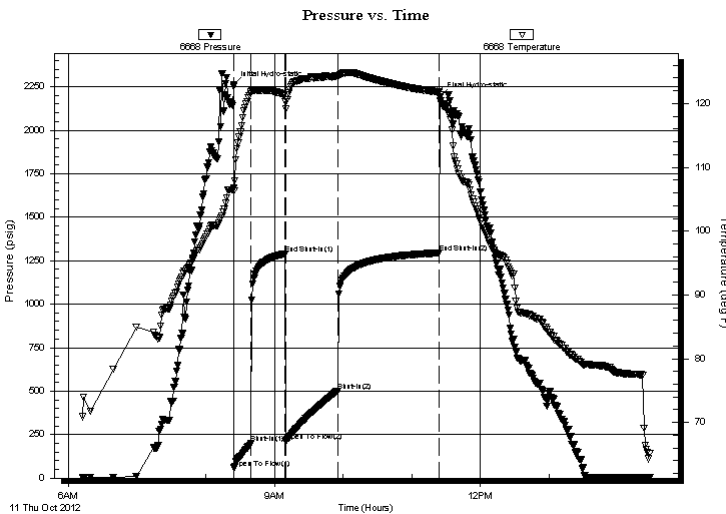
2012.10.11 @ 08:24:30

Time Off Btm:

2012.10.11 @ 11:24:45

**TEST COMMENT:** IF:BOB in 2 min.  
IS:Return blow BOB in 14 min.  
FF:BOB in 2 min.  
FS:Return blow built to 4" blow

## PRESSURE SUMMARY



| Time (Min.) | Pressure (psig) | Temp (deg F) | Annotation           |
|-------------|-----------------|--------------|----------------------|
| 0           | 2258.61         | 106.77       | Initial Hydro-static |
| 1           | 58.85           | 106.28       | Open To Flow (1)     |
| 15          | 199.80          | 121.83       | Shut-In(1)           |
| 45          | 1289.58         | 121.39       | End Shut-In(1)       |
| 46          | 210.23          | 120.22       | Open To Flow (2)     |
| 91          | 501.23          | 124.29       | Shut-In(2)           |
| 180         | 1294.98         | 121.76       | End Shut-In(2)       |
| 181         | 2190.63         | 122.14       | Final Hydro-static   |

## Recovery

| Length (ft) | Description         | Volume (bbl) |
|-------------|---------------------|--------------|
| 0.00        | GIP= 806 feet       | 0.00         |
| 211.00      | gcmo 20%g 40%m 40%o | 1.58         |
| 120.00      | gcmo 10%g 10%m 80%o | 1.68         |
| 960.00      | gco 30%g 70%o       | 13.47        |
|             |                     |              |
|             |                     |              |

\* Recovery from multiple tests

## Gas Rates

|  | Choke (inches) | Pressure (psig) | Gas Rate (Mcf/d) |
|--|----------------|-----------------|------------------|
|  |                |                 |                  |



**TRILOBITE  
TESTING, INC.**

# DRILL STEM TEST REPORT

**FLUID SUMMARY**

Shakespeare Oil Co. Inc

**26-16s-34w Scott Co**

202 W. Main St  
Salem IL 62881

**Janzen 1 26**

Job Ticket: 44450

**DST#: 6**

ATTN: Tim Priest

Test Start: 2012.10.11 @ 06:12:15

## Mud and Cushion Information

|                                  |                            |                       |
|----------------------------------|----------------------------|-----------------------|
| Mud Type: Gel Chem               | Cushion Type:              | Oil API: 35 deg API   |
| Mud Weight: 9.00 lb/gal          | Cushion Length: ft         | Water Salinity: 0 ppm |
| Viscosity: 60.00 sec/qt          | Cushion Volume: bbl        |                       |
| Water Loss: 9.18 in <sup>3</sup> | Gas Cushion Type:          |                       |
| Resistivity: 0.00 ohm.m          | Gas Cushion Pressure: psig |                       |
| Salinity: 8000.00 ppm            |                            |                       |
| Filter Cake: 1.00 inches         |                            |                       |

## Recovery Information

Recovery Table

| Length<br>ft | Description         | Volume<br>bbl |
|--------------|---------------------|---------------|
| 0.00         | GIP= 806 feet       | 0.000         |
| 211.00       | gcmo 20%g 40%m 40%o | 1.584         |
| 120.00       | gcmo 10%g 10%m 80%o | 1.683         |
| 960.00       | gco 30%g 70%o       | 13.466        |

Total Length: 1291.00 ft      Total Volume: 16.733 bbl

Num Fluid Samples: 0

Num Gas Bombs: 0

Serial #:

Laboratory Name:

Laboratory Location:

Recovery Comments: API= 36@70 corrected to 35@60

Serial #: 6668

Inside

Shakespeare Oil Co. Inc

Janzen 1 26

DST Test Number: 6

# Pressure vs. Time

