



TRILOBITE TESTING, INC.

DRILL STEM TEST REPORT

Shakespeare Oil Co. Inc

26-16s-34w Scott Co

202 W. Main St
Salem IL
62881
ATTN: Tim Priest

Janzen 1 26

Job Ticket: 49851

DST#: 7

Test Start: 2012.10.12 @ 11:59:15

GENERAL INFORMATION:

Formation: **Marmaton**

Deviated: No Whipstock: ft (KB)

Time Tool Opened: 14:25:15

Time Test Ended: 20:14:15

Test Type: Conventional Bottom Hole (Reset)

Tester: Mike Roberts

Unit No: 65

Interval: 4468.00 ft (KB) To 4530.00 ft (KB) (TVD)

Reference Elevations: 3114.00 ft (KB)

Total Depth: 4530.00 ft (KB) (TVD)

3109.00 ft (CF)

Hole Diameter: 7.88 inches Hole Condition: Fair

KB to GR/CF: 5.00 ft

Serial #: 6668 Inside

Press @ Run Depth: 205.93 psig @ 4473.00 ft (KB)

Capacity: 8000.00 psig

Start Date: 2012.10.12

End Date:

2012.10.12

Last Calib.:

2012.10.12

Start Time: 11:59:15

End Time:

20:14:15

Time On Btm:

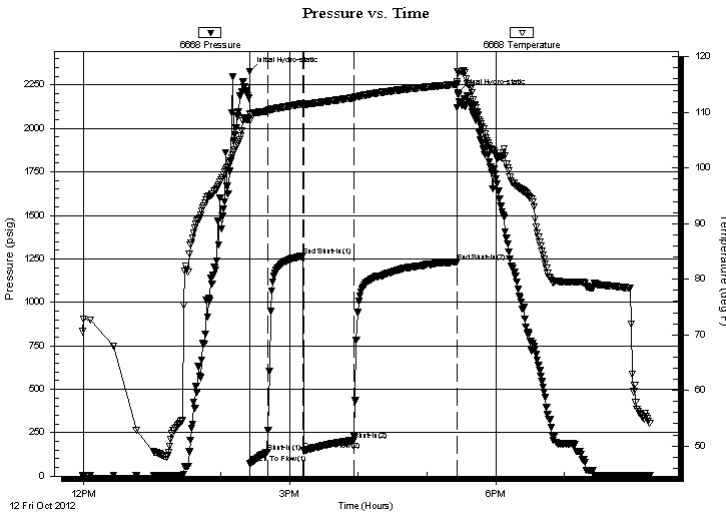
2012.10.12 @ 14:25:00

Time Off Btm:

2012.10.12 @ 17:26:45

TEST COMMENT: IF:BOB in 2 min.
IS:Return blow built to 4" died to 3" blow
FF:BOB in 22 min.
FS:Return blow built to 1" died to surface blow

PRESSURE SUMMARY



Time (Min.)	Pressure (psig)	Temp (deg F)	Annotation
0	2328.86	109.70	Initial Hydro-static
1	71.30	108.40	Open To Flow (1)
16	137.38	110.22	Shut-In(1)
47	1266.52	111.53	End Shut-In(1)
48	146.09	111.27	Open To Flow (2)
91	205.93	112.63	Shut-In(2)
181	1231.72	115.07	End Shut-In(2)
182	2202.99	117.22	Final Hydro-static

Recovery

Length (ft)	Description	Volume (bbl)
151.00	gcom 5%g 5%o 90%m	0.74
120.00	gcom 20%g 20%o 60%m	1.68
60.00	gcmo 30%g 30% m 40%o	0.84
120.00	Free oil 100% o	1.68
0.00	GIP= 300 feet	0.00

Gas Rates

Choke (inches)	Pressure (psig)	Gas Rate (Mcf/d)

* Recovery from multiple tests



**TRILOBITE
TESTING, INC.**

DRILL STEM TEST REPORT

FLUID SUMMARY

Shakespeare Oil Co. Inc

26-16s-34w Scott Co

202 W. Main St
Salem IL
62881

Janzen 1 26

Job Ticket: 49851

DST#: 7

ATTN: Tim Priest

Test Start: 2012.10.12 @ 11:59:15

Mud and Cushion Information

Mud Type: Gel Chem

Cushion Type:

Oil API:

31 deg API

Mud Weight: 9.00 lb/gal

Cushion Length:

ft

Water Salinity:

0 ppm

Viscosity: 58.00 sec/qt

Cushion Volume:

bbbl

Water Loss: 10.37 in³

Gas Cushion Type:

Resistivity: 0.00 ohm.m

Gas Cushion Pressure:

psig

Salinity: 8200.00 ppm

Filter Cake: 1.00 inches

Recovery Information

Recovery Table

Length ft	Description	Volume bbbl
151.00	gcom 5%g 5%o 90%m	0.743
120.00	gcom 20%g 20%o 60%m	1.683
60.00	gcmo 30%g 30% m 40%o	0.842
120.00	Free oil 100% o	1.683
0.00	GIP= 300 feet	0.000

Total Length: 451.00 ft Total Volume: 4.951 bbl

Num Fluid Samples: 0

Num Gas Bombs: 0

Serial #:

Laboratory Name:

Laboratory Location:

Recovery Comments: API= 30 @50 correstcted to 31 @ 60

Serial #: 6668

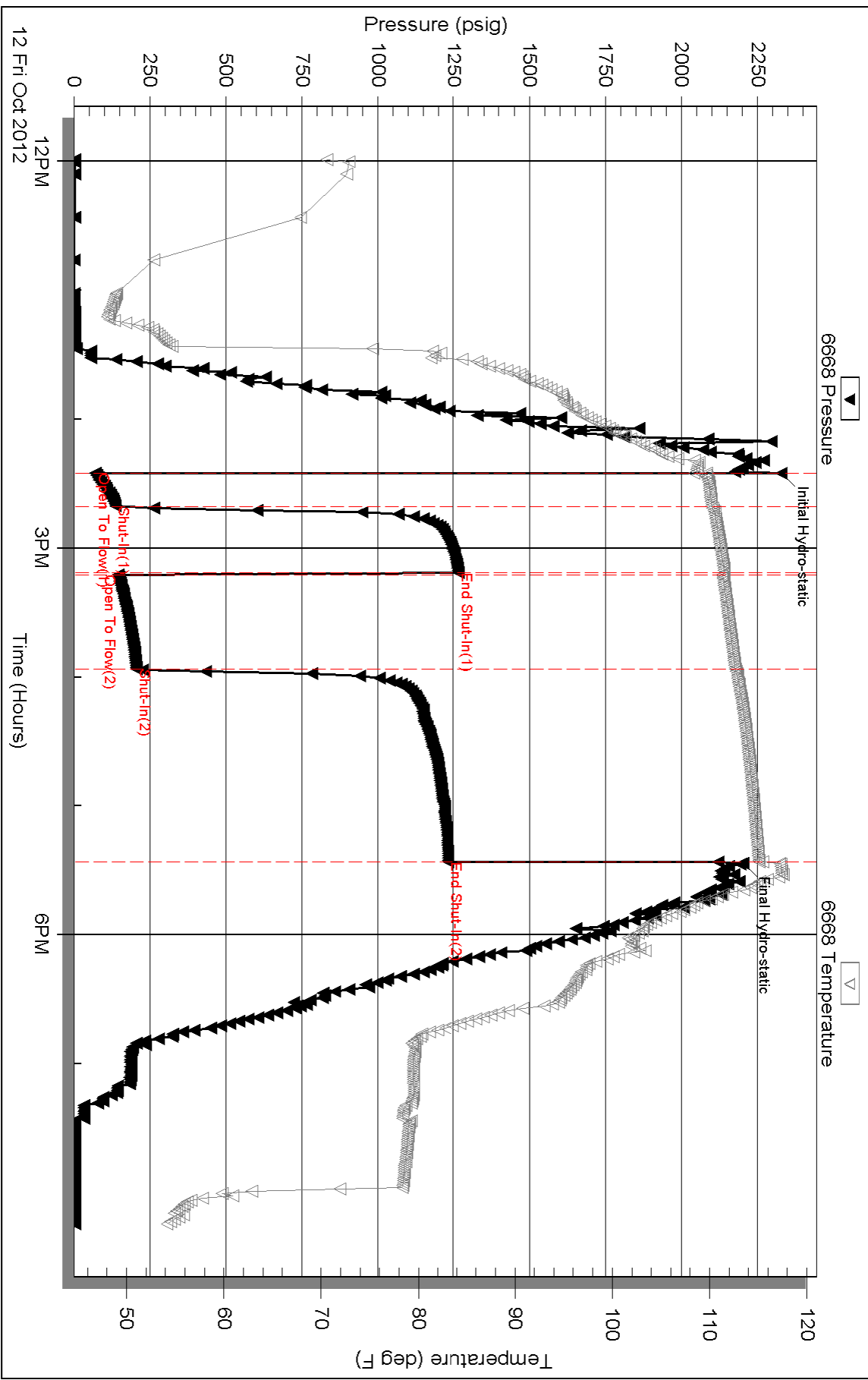
Inside

Shakespeare Oil Co. Inc

Janzen 1 26

DST Test Number: 7

Pressure vs. Time



Triobite Testing, Inc

Ref. No: 49851

Printed: 2012.10.12 @ 23:22:19