



TRILOBITE TESTING, INC.

DRILL STEM TEST REPORT

Shakespeare Oil Co., Inc.

27-13s-31w Gove Co.

202 W Main st
Salem, IL 62881

Parsons #2-27

Job Ticket: 50146

DST#: 4

ATTN: Tim Priest

Test Start: 2012.09.24 @ 23:01:00

GENERAL INFORMATION:

Formation: **"K" Zone**
 Deviated: No Whipstock: ft (KB)
 Test Type: Conventional Bottom Hole (Reset)
 Time Tool Opened: 00:44:30
 Tester: Sam Esparza
 Time Test Ended: 05:49:00
 Unit No: 64
 Interval: **4138.00 ft (KB) To 4170.00 ft (KB) (TVD)**
 Reference Elevations: 2848.00 ft (KB)
 Total Depth: 4170.00 ft (KB) (TVD)
 2838.00 ft (CF)
 Hole Diameter: 7.88 inches
 Hole Condition: KB to GR/CF: 10.00 ft

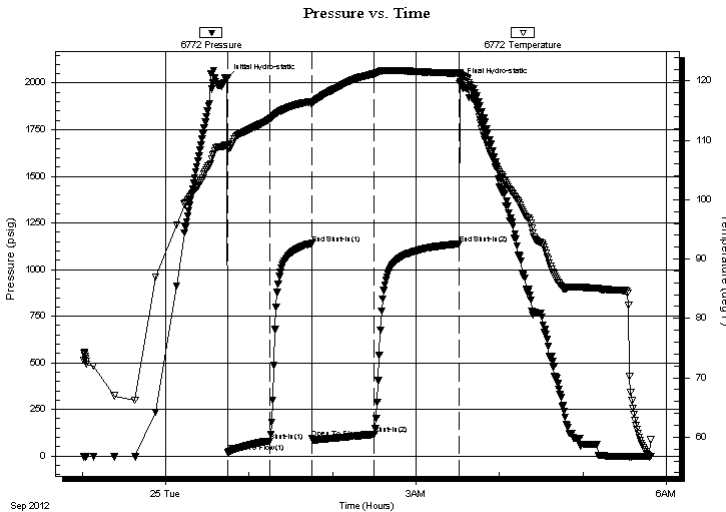
Serial #: 6772

Outside

Press @ Run Depth: 116.43 psig @ 4139.00 ft (KB) Capacity: 8000.00 psig
 Start Date: 2012.09.24 End Date: 2012.09.25 Last Calib.: 2012.09.25
 Start Time: 23:01:05 End Time: 05:48:59 Time On Btm: 2012.09.25 @ 00:44:15
 Time Off Btm: 2012.09.25 @ 03:31:45

TEST COMMENT: IF: 8 3/4" blow.
 IS: 1/4" return.
 FF: BOB @ 34 min.
 FS: 3" return.

PRESSURE SUMMARY



Time (Min.)	Pressure (psig)	Temp (deg F)	Annotation
0	2023.57	109.18	Initial Hydro-static
1	18.06	108.60	Open To Flow (1)
31	80.70	113.60	Shut-In(1)
61	1140.36	116.52	End Shut-In(1)
61	94.42	115.98	Open To Flow (2)
106	116.43	121.23	Shut-In(2)
167	1137.80	121.30	End Shut-In(2)
168	2005.03	121.16	Final Hydro-static

Recovery

Length (ft)	Description	Volume (bbl)
120.00	OMCW 15o 30m 55w	0.59
60.00	GWOCM 10g 15o 15w 60m	0.54
20.00	GWMCO 10g 10w 20m 60o	0.28
40.00	GO 40g 60o	0.56
0.00	380' GIP	0.00

* Recovery from multiple tests

Gas Rates

Choke (inches)	Pressure (psig)	Gas Rate (Mcf/d)



**TRILOBITE
TESTING, INC.**

DRILL STEM TEST REPORT

FLUID SUMMARY

Shakespeare Oil Co., Inc.

27-13s-31w Gove Co.

202 W Main st
Salem, IL 62881

Parsons #2-27

Job Ticket: 50146

DST#: 4

ATTN: Tim Priest

Test Start: 2012.09.24 @ 23:01:00

Mud and Cushion Information

Mud Type: Gel Chem

Cushion Type:

Oil API:

37 deg API

Mud Weight: 9.00 lb/gal

Cushion Length:

ft

Water Salinity:

ppm

Viscosity: 51.00 sec/qt

Cushion Volume:

bbbl

Water Loss: 8.79 in³

Gas Cushion Type:

Resistivity: 0.00 ohm.m

Gas Cushion Pressure:

psig

Salinity: 3000.00 ppm

Filter Cake: 1.00 inches

Recovery Information

Recovery Table

Length ft	Description	Volume bbbl
120.00	OMCW 15o 30m 55w	0.590
60.00	GWOCM 10g 15o 15w 60m	0.541
20.00	GWMCO 10g 10w 20m 60o	0.281
40.00	GO 40g 60o	0.561
0.00	380' GIP	0.000

Total Length: 240.00 ft Total Volume: 1.973 bbl

Num Fluid Samples: 0

Num Gas Bombs: 0

Serial #:

Laboratory Name:

Laboratory Location:

Recovery Comments: Oil API: 36 @ 50 degrees= 37

