



**TRILOBITE
TESTING, INC**

DRILL STEM TEST REPORT

Shakespeare Oil Co., Inc.

27-13s-31w Gove Co.

202 W Main st
Salem, IL 62881

Parsons #2-27

Job Ticket: 50149

DST#: 7

ATTN: Tim Priest

Test Start: 2012.09.27 @ 17:52:00

GENERAL INFORMATION:

Formation: **Johnson**

Deviated: No Whipstock: ft (KB)

Time Tool Opened: 19:41:45

Time Test Ended: 23:54:30

Test Type: Conventional Bottom Hole (Reset)

Tester: Sam Esparza

Unit No: 64

Interval: 4452.00 ft (KB) To 4497.00 ft (KB) (TVD)

Reference Elevations: 2848.00 ft (KB)

Total Depth: 4497.00 ft (KB) (TVD)

2838.00 ft (CF)

Hole Diameter: 7.88 inches Hole Condition:

KB to GR/CF: 10.00 ft

Serial #: 6772 Outside

Press @ Run Depth: 15.85 psig @ 4453.00 ft (KB)

Capacity: 8000.00 psig

Start Date: 2012.09.27

End Date:

2012.09.27

Last Calib.:

2012.09.28

Start Time:

17:52:05

End Time:

23:54:29

Time On Btm:

2012.09.27 @ 19:41:30

Time Off Btm:

2012.09.27 @ 21:44:45

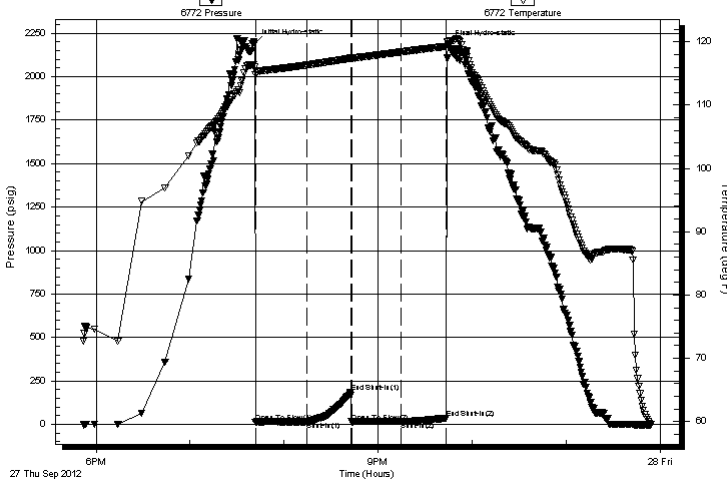
TEST COMMENT: IF: Weak surface blow .

IS: No return.

FF: No blow .

FS: No return.

Pressure vs. Time



PRESSURE SUMMARY

Time (Min.)	Pressure (psig)	Temp (deg F)	Annotation
0	2187.45	116.00	Initial Hydro-static
1	13.50	114.84	Open To Flow (1)
33	15.83	116.34	Shut-In(1)
61	183.39	117.41	End Shut-In(1)
62	14.78	117.37	Open To Flow (2)
94	15.85	118.41	Shut-In(2)
122	35.70	119.31	End Shut-In(2)
124	2187.16	120.10	Final Hydro-static

Recovery

Length (ft)	Description	Volume (bbl)
10.00	Mud 100m (Oil spots)	0.05

Gas Rates

	Choke (inches)	Pressure (psig)	Gas Rate (Mcf/d)

* Recovery from multiple tests



**TRILOBITE
TESTING, INC**

DRILL STEM TEST REPORT

FLUID SUMMARY

Shakespeare Oil Co., Inc.

27-13s-31w Gove Co.

202 W Main st
Salem, IL 62881

Parsons #2-27

Job Ticket: 50149

DST#: 7

ATTN: Tim Priest

Test Start: 2012.09.27 @ 17:52:00

Mud and Cushion Information

Mud Type: Gel Chem

Cushion Type:

Oil API:

deg API

Mud Weight: 9.00 lb/gal

Cushion Length:

ft

Water Salinity:

ppm

Viscosity: 45.00 sec/qt

Cushion Volume:

bbbl

Water Loss: 6.40 in³

Gas Cushion Type:

Resistivity: 0.00 ohm.m

Gas Cushion Pressure:

psig

Salinity: 7000.00 ppm

Filter Cake: 1.00 inches

Recovery Information

Recovery Table

Length ft	Description	Volume bbl
10.00	Mud 100m (Oil spots)	0.049

Total Length: 10.00 ft Total Volume: 0.049 bbl

Num Fluid Samples: 0

Num Gas Bombs: 0

Serial #:

Laboratory Name:

Laboratory Location:

Recovery Comments:

