



Scale 1:240 (5"=100') Imperial
Measured Depth Log

Well Name: CHARLES #1
 Location: NW SE SE NW SECTION 31 23S 23W
 License Number: 34317, API# 15-083-21853
 Spud Date: 10/13/2010
 Surface Coordinates: 2260' FROM SOUTH LINE OF SECTION
 2090' FROM EAST LINE OF SECTION
 Bottom Hole Coordinates: 2260' FROM SOUTH LINE OF SECTION
 2090' FROM EAST LINE OF SECTION
 Ground Elevation (ft): 2453' K.B. Elevation (ft): 2466'
 Logged Interval (ft): 3900' To: 4826 Total Depth (ft): 4826
 Formation: MISSISSIPPI
 Type of Drilling Fluid: CHEMICAL, ANDY'S MUD

Region: HODGEMAN CO. KS.
 Drilling Completed: 10/23/2012

Printed by WellSight Log Viewer from WellSight Systems 1-800-447-1534 www.WellSight.com

OPERATOR

Company: BEXEXCO
 Address: 2020 NORTH BRAMBLEWOOD
 WICHITA, KANSAS 67206

GEOLOGIST

Name: DAVID GOULD (LOGGER)
 Company: DMT COMPANY
 Address: 532 SUNRISE
 PRATT, KANSAS 67124

Well Name & No.: Charles #1-31 Company: Berexco Test No.: 1

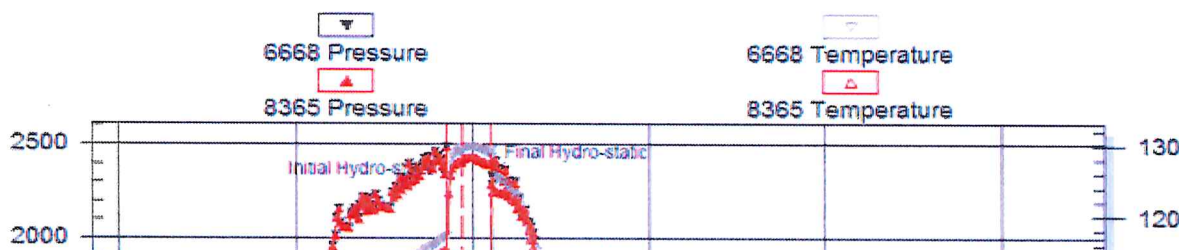
Interval Tested: 4719-4729 Zone Tested: Cherokee Times: 15-30-Pulled Test

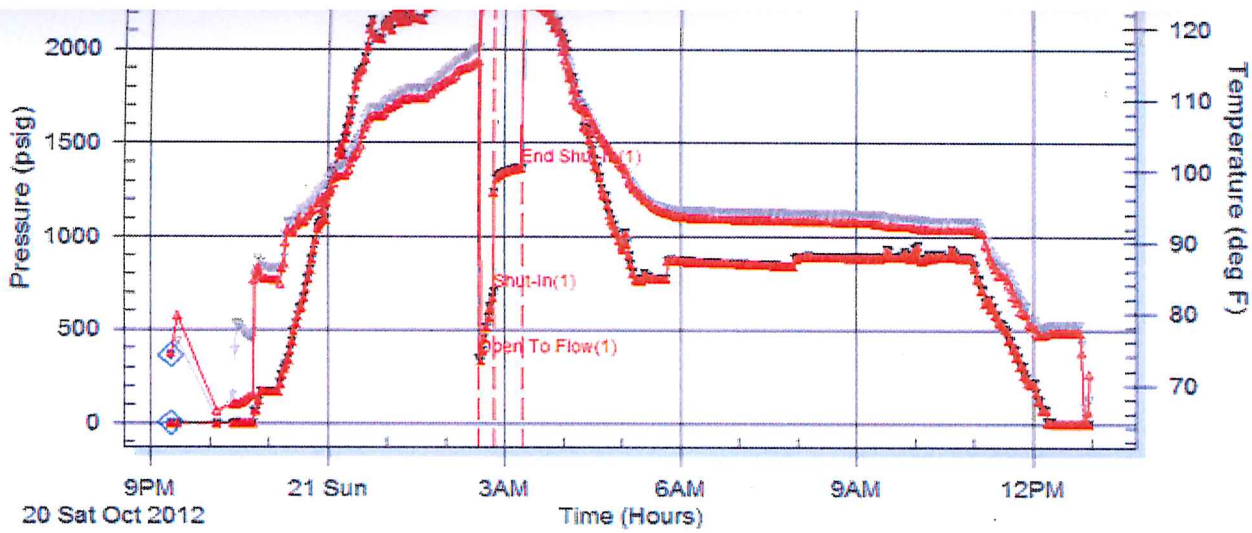
Blow Description: IFP: Built to BOB in 10 Sec. ISI: Built to BOB in 26 Min. FFP: N/A FSI: N/A

Rec: 93 Feet of GO 85% Oil, 15% Gas, 1922 Feet of "REV", 124 Feet of GOCM, 8% Gas, 32% Oil, 60% Mud
 540 Feet of GIP, Rec. Total: 2139', BHT: Not Reported, Gravity: 35.4

Initial Hydrostatic: 2489 First Initial Flow: 352 First Final Flow: 708 Initial Shut-In: 1371

Second Initial Flow: N/A Second Final Flow: N/A Final Shut-In: N/A Final Hydrostatic: 2338





Gauge 6668: Displaying every 8 points.

Comments

DRILLING CONTRACTOR:
BEREDCO RIG #2

TESTING:
TRILOBITE TESTING

LOGS:
LOG TECH, DUAL INDUCTION, COMPENSATED NEUTRON DENSITY AND MICRO

SURVEY'S:
315' MISS RUN?
1354' 1 DEGREE
2386' 3/4 DEGREE
3568' 3/4 DEGREE
4729' 3/4 DEGREE ?
4826' 1 1/4 DEGREE


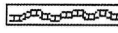
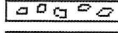
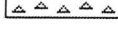
BIT RECORD:
#1 12 1/4" RR 0' TO 315'
#2 7 7/8" F271Y PX8798 315' TO



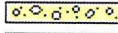

DAILY STATUS: (7:00 AM)
10/11/2012, MOVE RIG IN
10/12/2012, DRILL & SET SURFACE, WOC
10/13/2012, 814' DRILLING AHEAD
10/14/2012, 2013' DRILLING AHEAD
10/15/2012, 2770' DRILLING AHEAD
10/16/2012, 3340' DRILLING AHEAD
10/17/2012, 3820' DRILLING AHEAD
10/18/2012, 4180', WORK ON PUMP, DRILLING AHEAD
10/19/2012, 4485', DRILLING AHEAD
10/20/2012, 4705' DRILL AHEAD TO 4729', DST #1
10/21/2012, 4729, DST #1
10/22/2012, 4826' LOGGING
10/23/2012, Run 5 1/2" CASING, TOTAL CASING RAN 4824.83'

ROCK TYPES

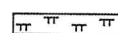

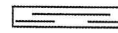
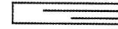
 Anhy	 Clyst	 Gyp	 Mrlst	 Shgy
 Bent	 Coal	 Lagn	 Salt	 Sltst

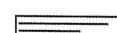

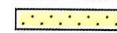
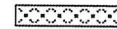
ROCK TYPES

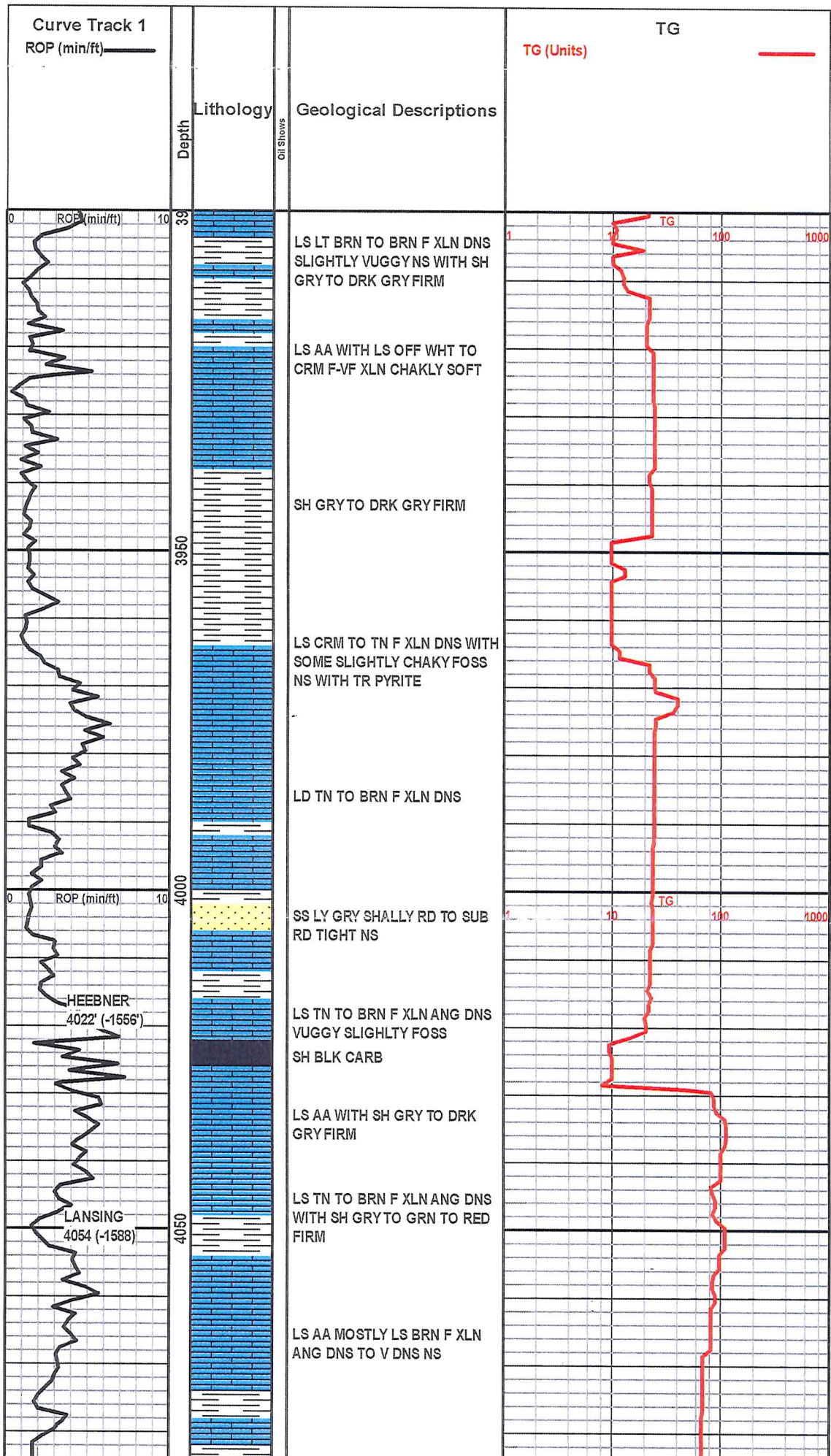
-  Anhy
-  Bent
-  Brec
-  Cht

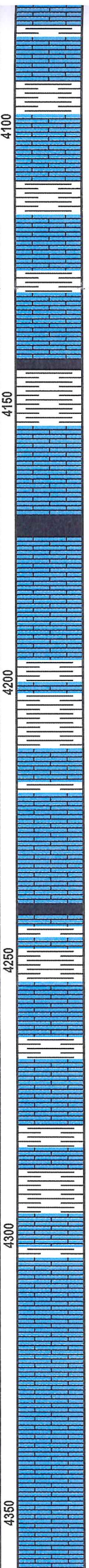
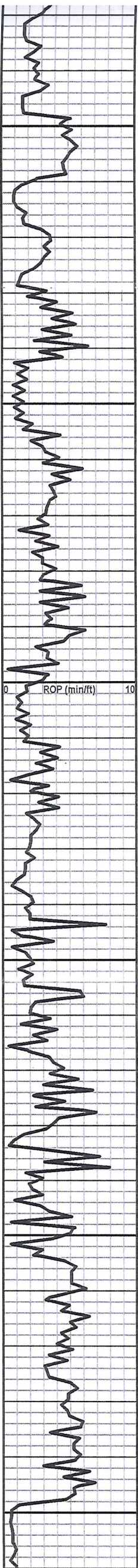
-  Clyst
-  Coal
-  Congl
-  Dol

-  Gyp
-  Igne
-  Lmst
-  Meta

-  Mrlst
-  Salt
-  Shale
-  Shcol

-  Shgy
-  Sltst
-  Ss
-  Till





4100

LS CRM TO TN F XLN ANG DNS WITH LS WHT TO OFF WHT F-VF XLN CHAKY NS WITH SH GRY FIRM

LS AA WITH INTERBEDED PYRITE WITH SH DRK BRN ANG SOFT

LS CRM TO TN TO LT GRY F XLN DNS SOME SLIGHTLY CHAKY NS WITH SH GRY FIRM

SH BLK CARB

4150

LS AA WITH CHERT WHT ANG V DNS WITH SH GRN ANG FIRM

LS & CHERT AA WITH SH DRK GRY TO BLK SOME CARB

LS DRK GRY VUGGY F XLN DNS WITH INTERBEDED PYRITE

4200

LS CRM TO LT TN F XLN SLIGHTLY VUGGY DNS WITH SOME CHAKLY WITH SH DRK GRY TO BLK

LS AA WITH CHERT WHT TO LT GRY ANG SHARP V DNS

SH BLK CARB

4250

SH GRY TO DRK GRY FIRM

LS AA WITH LS BRN ANG TO SUB ANG FAC DNS NS SLIGHTLY CHERTY

LS GRY FOSS F XLN DNS NS WITH SH GRY TO BLK SLIGHTLY SILTY

4300

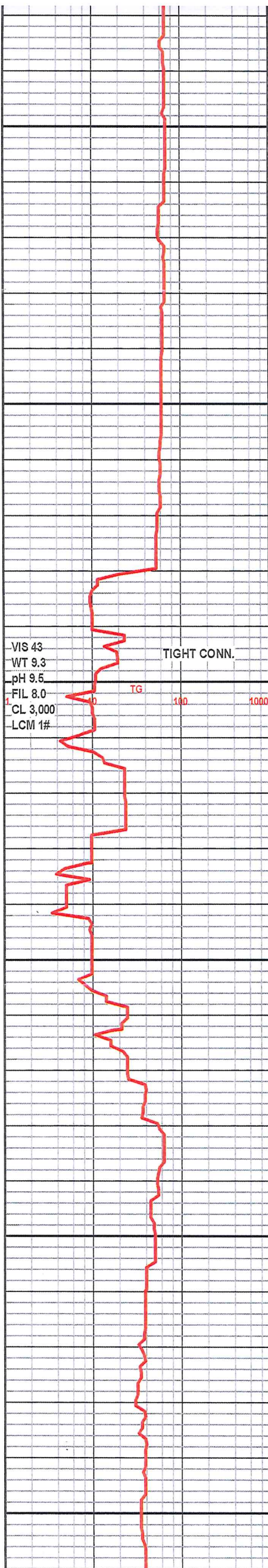
LS CRM TO LT TN F XLN ANG DNS SLIGHTLY VUGGY P POR NS

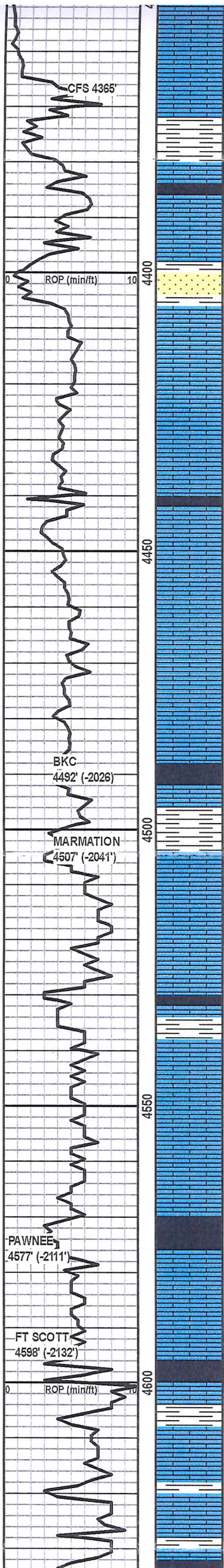
LS AA WITH SOME BEING CHAKY SOFT WITH SH LT GRY TO BLK TO GRN FIRM TO SOFT WIT TR CHERT

4350

LS BRN V VUGGY FOSS F-M XLN ANG DNS WITH SH DRK GRY TO DRK GRN FIRM

LS LT TN ANG F-G OOLIC POR F XLN SLIGHTLY DNS NS N FLOR N ODOR





LS LT TN ANG F-G OOLIC POR
F XLN SLIGHTLY DNS NS N
FLOR N ODOR

LS TN TO BRN TO LY GRY F
XLN ANG DNS WITH
INTERBEDDED PYRITE

SH BLK CARB

LS AA WITH SH GRY TO GRN
TO BLK SOME CARB WITH SS
LT GRY SUB RD F-VF GR
SHALLY NS

LS CRM TO LT TN F XLN DNS
WITH SOME SLIGHTLY CHAKY

LS CRM TO TN ANG F XLN DNS
WITH TR PYRITE

SH BLK CARB

NO SAMPLE

LS TN ANG F XLN DNS
SLIGHTLY FOSS NS WITH SH
DRK GRY TO BLK

LS BRN TO DRN BRN F-M XLN
DNS SLIGHTLY FOSS NS WITH
SH GRY TO BLK SOME CARB
FIRM

LS CRM TO TN F XLN SLIGHTLY
CHAKY NS

SH BLK CARB

LS AA WITH SH LT GRY TO LT
GRN SOME SOFT

LS AA SOME BEING CHAKY
WITHLS DRK BRN F XLN DNS

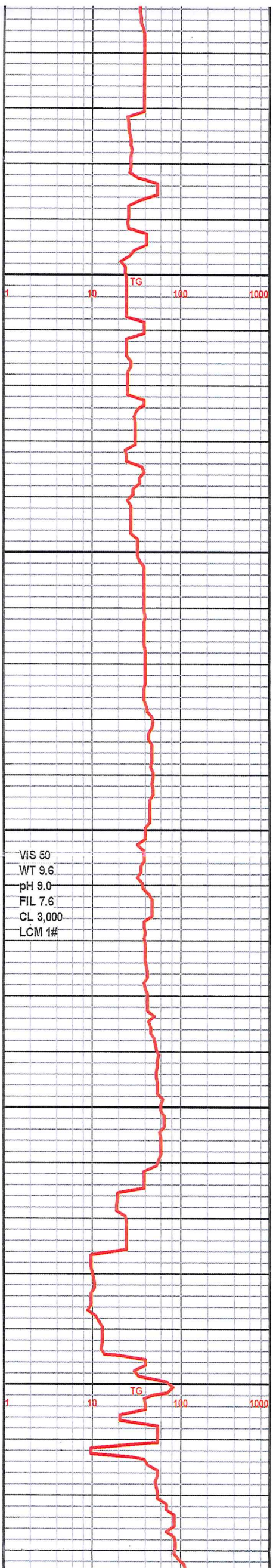
SH BLK CARB

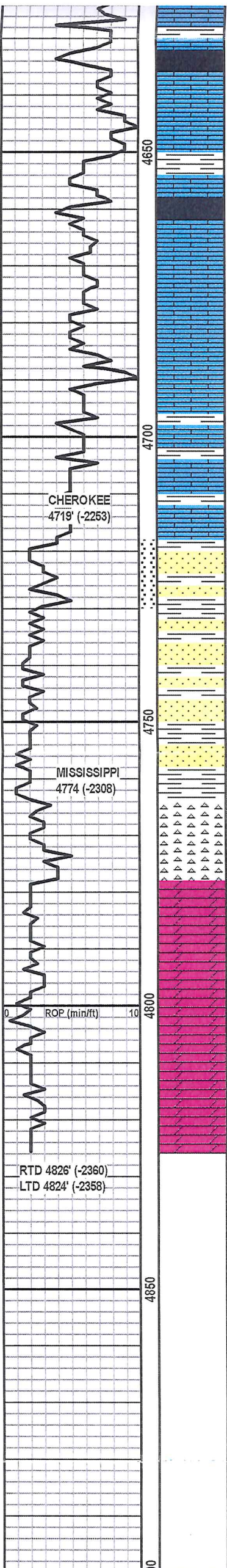
LS CRM TO TN SUB ANG F XLN
DNS WITH INTERBEDD DRK
GRY SH

LS TN F XLN ANG VUGGY DNS
WITH LS DRK BRN TO GRY F-M
XLN DNS WITH SH BLK CARB

LS AA WITHLS CRM TO OFF
WHT F XLN CHAKY LT TO DRK
GRY FIRM
LS DRK BRN ANG F XLN DNS
NS SOME SLIGHTLY VUGGY

LS TN TO CRM ANG F XLN DNS
SOME SLIGHTLY CHAKY WITH SH
DRK GRY FIRM





SOME SLIGHTLY CHAKY WITH SH DRK GRY FIRM

SH BLK CARB

LS BRN TO DRK BRN ANG F-M XLN V DNS NS

SH BLK CARB

LS AA WITH SOME SLIGHTLY VUGGY NS WITH LS LT TN TO CRM F XLN ANG SOME CHAKY

LS BRN TO TN ANG P POR F XLN DNS WITH INTERBEDDED PYRITE

LS AA WITH INTERBEDDED PYRITE

LS TN TO BRN F XLN DNS WITH TR PYRITE WITH SH GRY TO LT GRN FIRM TO SOFT

SS CLEAR RD TO SUB RD M-F GR NO CLUSTERS JUST LOOSE GR IN TRAY G ODOR N FLOR N CUT

SS CLEAR TO LT TN TR INTERBEDDED PYRITE RD TO SUB RD M-G GR G STAIN DEAD OIL FREE OIL G FLOR G CUT G ODOR

SH GRY TO GRN WITH SH GRN SANDY SUB ANG M-C GR NS WITH SOME INTERBEDDED PYRITE

CHERT WHT TO OFF WHT SHARP P POR F STAIN P FLOR N CUT DNS WITH CHERT WEATHERED WHT F-P POR NS

DOL TN ANG F-M XLN G POR G STAIN SHOW OF DEAD OIL FREE OIL G ODOR G FLOR G MILKY CUT DOL LIMEY ANG F-M XLN DNS NS

DOL CHERY TN TO OFF WHT F PIN POR ANG F STAIN F FLOR G CUT F ODOR

DOL CHERY TN F-M XLN ANG DNS NS

