

# Robert D. Hendrix

## Petroleum Geologist

### GEOLOGIST'S REPORT

#### DRILLING TIME AND SAMPLE LOG

COMPANY **McCoy Petroleum Corporation**

LEASE **Farr Trust "A" #1-12**

FIELD **Wildcat**

LOCATION **1980' fsl & 1020' fwl**

SEC **12 TWP 7S RGE 19W**

COUNTY **Rooks STATE Kansas**

CONTRACTOR **Murfin Drilling Co. Inc. Rig #16**

SPUD **10/4/2012 COMP 10/10/2012**

RTD **3:52Z LTD 3:52Z**

MUD UP **2700' TYPE MUD Chemical**

SAMPLES SAVED FROM **2800 TO TD**

DRILLING TIME KEPT FROM **2800 TO TD**

SAMPLES EXAMINED FROM **2800 TO TD**

GEOLOGICAL SUPERVISION FROM **2800**

GEOLOGIST ON WELL **Robert D. Hendrix & Evan Stone**

FORMATION TOPS

ANHYDRITE **1436 (+501)**

BASE ANHYDRITE **1472 (+465)**

TOPEKA **2896 (-959)**

HEEBNER SH. **3099 (-1162)**

TORONTO **3126 (-1189)**

LANSING **3140 (-1203)**

STARK SH. **3323 (-1386)**

BKC **3360 (-1423)**

ARBUCKLE **3459 (-1522)**

ELECTRIC LOG

SAMPLE

ELEVATIONS

KB 1937  
DF  
GL 1932  
Measurements Are All From Kelly Bushing

CASING  
CONDUCTOR  
SURFACE 8.58" at 218'  
PRODUCTION

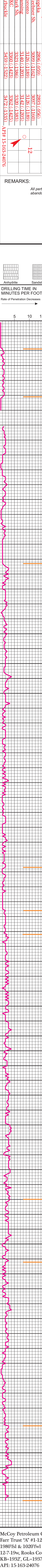
ELECTRICAL SURVEYS  
Pioneer  
Rag



REMARKS:  
All pertinent shows were tested, due to the negative results it is suggested that this test be plugged and abandoned.

Respectfully Submitted  
Robert D Hendrix

FORMATION TOPS	ELECTRIC LOG	SAMPLE
Anhydrite	1436 (+501)	1439 (+498)
Base Anhydrite	1472 (+465)	1471 (+466)
Topeka	2896 (-959)	2893 (-956)
Heebner Sh.	3099 (-1162)	3097 (-1160)
Toronto	3126 (-1189)	3126 (-1189)
Lansing	3140 (-1203)	3142 (-1205)
Stark Sh.	3323 (-1386)	3320 (-1383)
BKC	3360 (-1423)	3362 (-1425)
Arbuckle	3459 (-1522)	3472 (-1535)



DEPTH	LITHOLOGY	GAS UNITS	SAMPLE DESCRIPTION	REMARKS
1420	Anhydrite			<b>Anhydrite 1439 (+498)</b>
50	Sandstone			<b>Base Anhydrite 1471 (+466)</b>
2800	Limestone		Shale: gray, red, silty Limestone (dolomitic): gray to tan, fxl, chalky, no vis por Limestone: lt gray, fxl, soft, silty, granular, no vis por Shale: gray, red, silty Limestone: white to gray, fxl, v- chalky, soft, silty, granular, no vis por	Geologist on location 2775' at 3:20 pm 10/6/2012
50	Limestone		Shale: gray, silty, soft muddy Limestone: tan to white, f-mxl, fossiliferous, oolitic, no vis por Shale: gray, silty, sandy, biotitic	
2900	Limestone		Limestone: tan to white, f-trl, oolitic, fossiliferous, no vis por Shale: gray, black, hard Limestone: brown to tan, fxl, sl chalky, fossiliferous, no vis por Limestone: tan, fxl, chalky, fossiliferous, no vis por Limestone: gray to tan, fxl, silty, chalky, no vis por Shale: black, carbonaceous Limestone: tan to gray, f-mxl, pelletaloid, fossiliferous, no vis por Limestone: tan, f-mxl, granular, chalky, fossiliferous, no vis por Limestone: tan, fxl, granular, chalky, fossiliferous, no vis por Limestone: tan, fxl, granular, v-chalky, soft, fossiliferous, no vis por Shale: gray, red Shale: black, carbonaceous Shale: gray, red Limestone: tan, f-mxl, sl chalky, fossiliferous, no vis por Limestone: tan, fxl, sl chalky, v fossiliferous, no vis por Shale: gray, green silty Shale: gray, brown, red, black carbonaceous Limestone: tan, fxl, sl granular, chalky, fossiliferous, no vis por	<b>Topeka 2893 (-956)</b>
50	Limestone		Shale: gray, red Limestone: tan, f-mxl, v-chalky, sl cherty, fossiliferous, no vis por Shale: gray, green Limestone: tan, fxl, sl chalky, sl cherty, fossiliferous, no vis por, Limestone: tan to white, f-trl, v chalky, fossiliferous, no vis por Shale: red, gray, black Limestone: tan to white, f-trl, v chalky, fossiliferous, no vis por Limestone: tan to white, f-trl, granular, chalky, fossiliferous, no vis por	
3100	Limestone		Shale: black, carbonaceous Limestone: tan, fxl, dense, hard, no vis por Shale: gray, soft, muddy	<b>Heebner 3097 (-1160)</b>
CFS	Limestone		Limestone: tan to white, fxl, chalky, sl fossiliferous, no vis por Shale: gray, green, red, black	<b>Toronto 3126 (-1189)</b>
50	Limestone		Limestone: tan, fxl, chalky, dense, no vis por, faint odor Limestone: tan, fxl, chalky, sl cherty, dense, no vis por Limestone: white, fxl, dense no vis por, Shale: gray, red, black Limestone: white to tan, fxl, sl chalky, fossiliferous, no vis por, 5 pieces of sample. lt brown stain, slsfo (clear) on break, no odor Shale: gray, red, black Limestone: white to tan, fxl, sl chalky, cherty, 1% sample, oolitic pr interxl por, spotty lt stain, slsfo on break, faint odor Limestone: white to tan, fxl, cherty, fossiliferous 1% sample, pr-fr interxl por, sat spotty lt stain, slsfo on break, faint odor Limestone: tan to white, fxl, sl glauconitic, cherty, hard, dense, sl fossiliferous, no vis por	<b>Lansing 3142 (-1205)</b>
50	Limestone		Shale: black carbonaceous Shale: dark gray, black, red Limestone: tan to brown, fxl, sl chalky, sl fossiliferous, no vis por Limestone: tan to gray, fxl, cherty, dense, no vis por Shale: dark gray, red Limestone: white, fxl, hard, sl chalky, 10% sample sl pp por, gd sat stain, slsfo on break, gd odor, no fluorescence Shale: red, gray Limestone: white to tan, f-mxl, sl chalky, fossiliferous, 5% sample, sl vug to pr interxl por, sat dark stain, slsfo with more on break, good odor Shale: black carbonaceous Shale: gray, red, black Limestone: white, f-mxl, sl fossiliferous, oolitic in part, 5% sample no vis por, spotty dark sat stain, slsfo on break mostly dead, faint odor Shale: gray, green, red, black Shale: black carbonaceous Limestone: white, f-trl, sl chalky, sl fossiliferous, oolitic in part, pr interxl por, 10% sample lt sat stain, slsfo to gd sfo on break, fair odor	
50	Limestone		Shale: gray, red, black Limestone: tan, f-mxl, chalky, fossiliferous, no vis por Shale: gray, green, red, black Limestone: tan, fxl, chalky, granular, no vis por Limestone: tan, fxl, chalky, sl fossiliferous, no vis por Shale: red, gray, green Shale: red, gray, green Shale: gray, green, red, black, sandy, with trace amounts of limestone & dolomite, white, fxl, no vis por Shale: gray, green, red, black, with a mixture of limestone & dolomite, white stained red, fxl, no vis por Shale: red, gray, green, black, with a mixture of limestone & dolomite, white stained red, fxl, no vis por, small amount of chert, var-colored Shale: red, gray, green, black, with a significant amount of Dolomite, tan, fxl, no vis por,	<b>Stark Sh. 3320 (-1383)</b>
50	Limestone		Dolomite: tan, f-mxl, sl chky, pr interxl por, ns Dolomite: tan, f-mxl, sandy, glauconitic, pr pp-vug por, ns Dolomite: tan, f-mxl, sandy, glauconitic, no vis por, ns Dolomite: tan, f-mxl, sandy, glauconitic, no vis por, ns Dolomite: tan some red stained, f-mxl, sandy, glauconitic, no vis por, ns Dolomite: tan some red stained, f-mxl, sandy, glauconitic, sl cherty, no vis por, ns	<b>BKC 3362 (-1425)</b>
50	Dolomite			<b>Arbuckle 3472 (-1535)</b>
3500	Dolomite			wt 9.4, vis. 56, lcm 4# Mud-Co, Gary Schmidtberger
				<b>RTD 3522 (-1585)</b> 8:00am, 10/10/2012

McCoy Petroleum Corp.  
Farr Trust "A" #1-12  
1980'fsl & 1020'fsl  
12-7-19W, Rooks County, Kansas  
KB=1932, GL=1937  
API: 15-163-24076

Geologist off location at 1:30 pm 10/10/2012