



DRILL STEM TEST REPORT

Prepared For: **Shelby Resources**

2717 Canal Blvd. Hays Kansas 67601

ATTN: Keith Reavis

Schlessiger 1-25

25-17s-14w-rtonBa

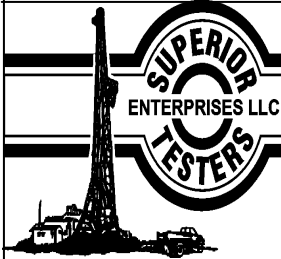
Start Date: 2012.10.16 @ 11:04:00

End Date: 2012.10.16 @ 17:47:00

Job Ticket #: 17860 DST #: 1

Superior Testers Enterprises LLC
PO Box 138 Great Bend KS 67530
1-800-792-6902

Printed: 2012.10.17 @ 04:04:03



DRILL STEM TEST REPORT

Shelby Resources
 2717 Canal Blvd. Hays Kansas 67601
 ATTN: Keith Reavis

25-17s-14w-rtonBa
Schlessiger 1-25
 Job Ticket: 17860 **DST#: 1**
 Test Start: 2012.10.16 @ 11:04:00

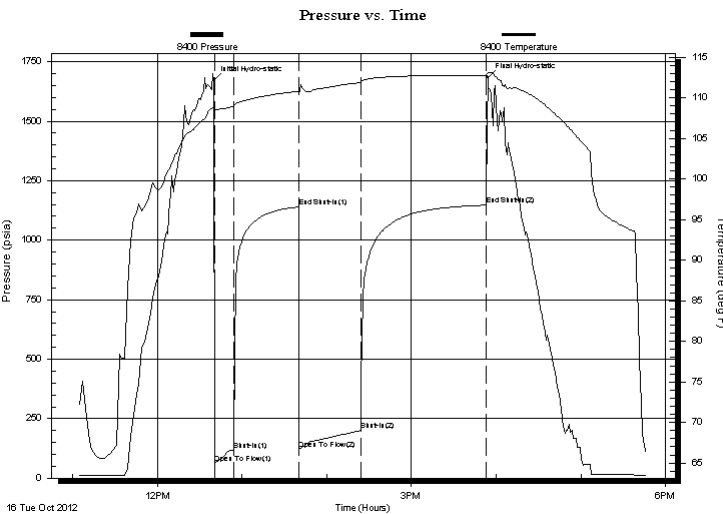
GENERAL INFORMATION:

Formation: **Arbuckle**
 Deviated: No Whipstock: ft (KB)
 Time Tool Opened: 12:40:30
 Time Test Ended: 17:47:00
Interval: 3337.00 ft (KB) To 3398.00 ft (KB) (TVD)
 Total Depth: 3398.00 ft (KB) (TVD)
 Hole Diameter: 7.88 inches Hole Condition: Fair
 Test Type: Conventional Bottom Hole (Initial)
 Tester: Dustin Ellis
 Unit No: 3315-Great Bend-32
 Reference Elevations: 1878.00 ft (KB)
 1872.00 ft (CF)
 KB to GR/CF: 6.00 ft

Serial #: 8400 Outside
 Press @ Run Depth: 199.84 psia @ 3395.37 ft (KB) Capacity: 5000.00 psia
 Start Date: 2012.10.16 End Date: 2012.10.16 Last Calib.: 2012.10.17
 Start Time: 11:04:00 End Time: 17:47:00 Time On Btm: 2012.10.16 @ 12:40:00
 Time Off Btm: 2012.10.16 @ 15:54:00

TEST COMMENT: 1st Open 15 minutes Fair building blow blew 5 inches into bucket of w water.
 1st Shut in 45 minutes No blow back.
 2nd Open 45 minutes Fair building blow blew bottom bucket 31 minutes.
 2nd Shut in 90 minutes No blow back.

PRESSURE SUMMARY



Time (Min.)	Pressure (psia)	Temp (deg F)	Annotation
0	1668.95	108.94	Initial Hydro-static
1	60.58	108.43	Open To Flow (1)
14	117.24	108.91	Shut-In(1)
60	1139.75	110.78	End Shut-In(1)
61	122.29	110.41	Open To Flow (2)
104	199.84	111.87	Shut-In(2)
193	1147.06	112.78	End Shut-In(2)
194	1683.84	113.11	Final Hydro-static

Recovery

Length (ft)	Description	Volume (bbl)
248.00	Muddy water 95%Mud 5%Water	1.51

Gas Rates

Choke (inches)	Pressure (psia)	Gas Rate (Mcf/d)



DRILL STEM TEST REPORT

Shelby Resources
 2717 Canal Blvd. Hays Kansas 67601
 ATTN: Keith Reavis

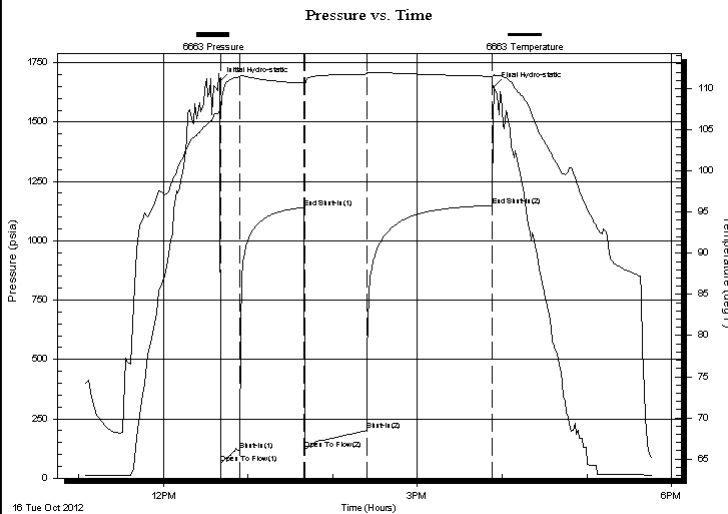
25-17s-14w-rtonBa
Schlessiger 1-25
 Job Ticket: 17860 **DST#: 1**
 Test Start: 2012.10.16 @ 11:04:00

GENERAL INFORMATION:

Formation: **Arbuckle**
 Deviated: No Whipstock: ft (KB)
 Test Type: Conventional Bottom Hole (Initial)
 Time Tool Opened: 12:40:30 Tester: Dustin Ellis
 Time Test Ended: 17:47:00 Unit No: 3315-Great Bend-32
 Interval: **3337.00 ft (KB) To 3398.00 ft (KB) (TVD)** Reference Elevations: 1878.00 ft (KB)
 Total Depth: 3398.00 ft (KB) (TVD) 1872.00 ft (CF)
 Hole Diameter: 7.88 inches Hole Condition: Fair KB to GR/CF: 6.00 ft

Serial #: 6663 Inside
 Press @ RunDepth: 1148.14 psia @ 3394.37 ft (KB) Capacity: 5000.00 psia
 Start Date: 2012.10.16 End Date: 2012.10.16 Last Calib.: 2012.10.17
 Start Time: 11:04:00 End Time: 17:46:30 Time On Btm: 2012.10.16 @ 12:40:00
 Time Off Btm: 2012.10.16 @ 15:54:00

TEST COMMENT: 1st Open 15 minutes Fair building blow blew 5 inches into bucket of water.
 1st Shut in 45 minutes No blow back.
 2nd Open 45 minutes Fair building blow blew bottom bucket 31 minutes.
 2nd Shut in 90 minutes No blow back.



PRESSURE SUMMARY			
Time (Min.)	Pressure (psia)	Temp (deg F)	Annotation
0	1670.99	107.32	Initial Hydro-static
1	62.50	107.05	Open To Flow (1)
14	118.21	111.42	Shut-In(1)
60	1140.51	110.67	End Shut-In(1)
61	123.27	110.46	Open To Flow (2)
104	200.19	111.78	Shut-In(2)
193	1148.14	111.50	End Shut-In(2)
194	1648.81	111.65	Final Hydro-static

Recovery		
Length (ft)	Description	Volume (bbl)
248.00	Muddy water 95%Mud 5%Water	1.51

Gas Rates			
	Choke (inches)	Pressure (psia)	Gas Rate (Mcf/d)



DRILL STEM TEST REPORT

TOOL DIAGRAM

Shelby Resources
 2717 Canal Blvd. Hays Kansas 67601
 ATTN: Keith Reavis

25-17s-14w-rtonBa
Schlessiger 1-25
 Job Ticket: 17860 **DST#: 1**
 Test Start: 2012.10.16 @ 11:04:00

Tool Information

Drill Pipe:	Length: 3118.00 ft	Diameter: 3.80 inches	Volume: 43.74 bbl	Tool Weight:	2000.00 lb
Heavy Wt. Pipe:	Length: 0.00 ft	Diameter: 0.00 inches	Volume: 0.00 bbl	Weight set on Packer:	20000.00 lb
Drill Collar:	Length: 216.25 ft	Diameter: 2.25 inches	Volume: 1.06 bbl	Weight to Pull Loose:	69000.00 lb
			<u>Total Volume: 44.80 bbl</u>	Tool Chased	0.00 ft
Drill Pipe Above KB:	17.25 ft			String Weight: Initial	64000.00 lb
Depth to Top Packer:	3337.00 ft			Final	64000.00 lb
Depth to Bottom Packer:	ft				
Interval between Packers:	61.37 ft				
Tool Length:	81.37 ft				
Number of Packers:	2	Diameter: 6.75 inches			

Tool Comments:

Tool Description	Length (ft)	Serial No.	Position	Depth (ft)	Accum. Lengths
-------------------------	--------------------	-------------------	-----------------	-------------------	-----------------------

Shut-In Tool	5.00			3322.00	
Hydraulic Tool	5.00			3327.00	
Packer	5.00			3332.00	20.00 Bottom Of Top Packer
Packer	5.00			3337.00	
Anchor	5.00			3342.00	
Change Over Sub	0.75			3342.75	
Drill Pipe	31.87			3374.62	
Change Over Sub	0.75			3375.37	
Anchor	18.00			3393.37	
Recorder	1.00	6663	Inside	3394.37	
Recorder	1.00	8400	Outside	3395.37	
Bull Plug	3.00			3398.37	61.37 Bottom Packers & Anchor

Total Tool Length: 81.37



DRILL STEM TEST REPORT

FLUID SUMMARY

Shelby Resources
 2717 Canal Blvd. Hays Kansas 67601
 ATTN: Keith Reavis

25-17s-14w-rtonBa
Schlessiger 1-25
 Job Ticket: 17860 **DST#: 1**
 Test Start: 2012.10.16 @ 11:04:00

Mud and Cushion Information

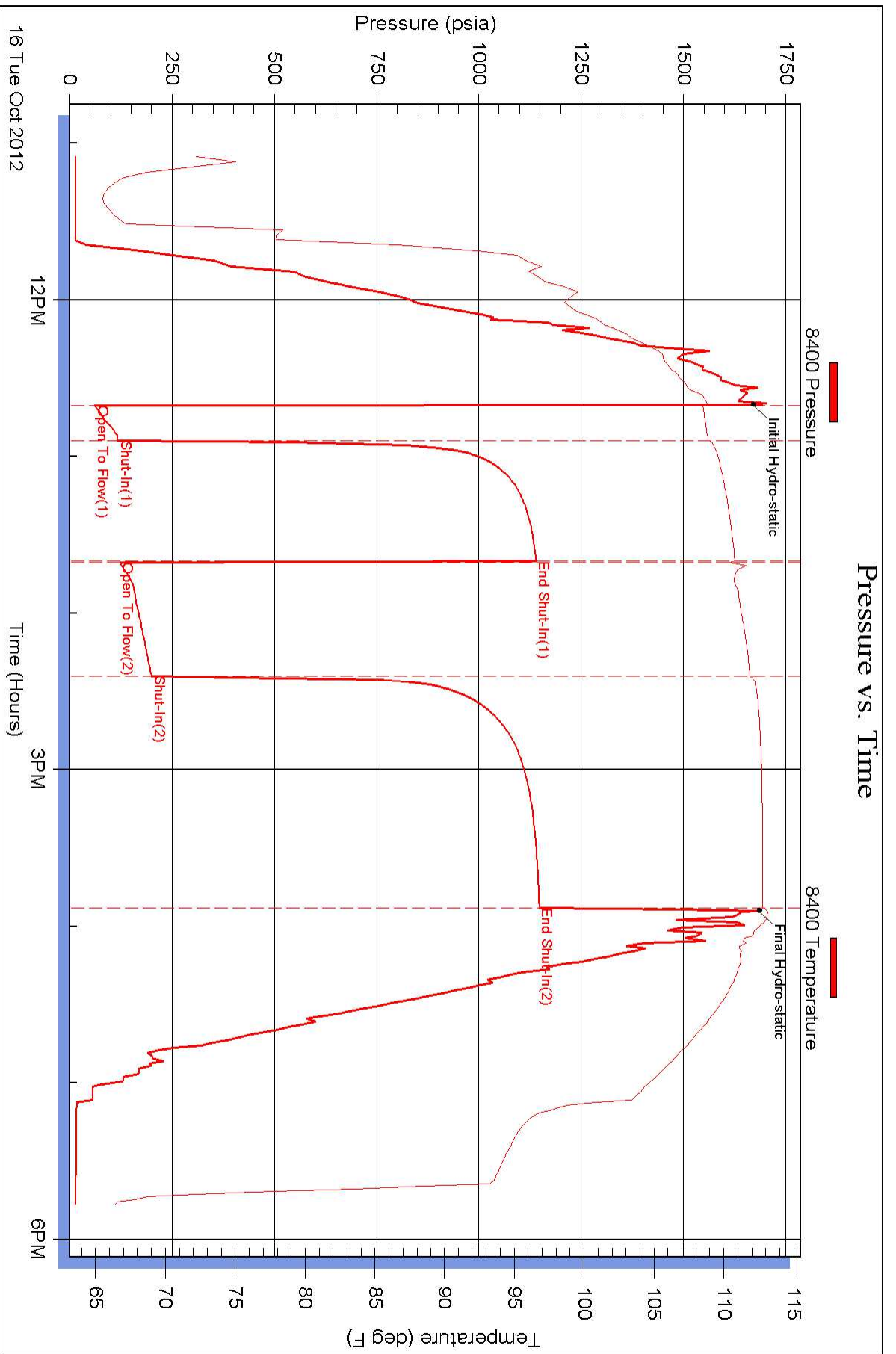
Mud Type: Gel Chem	Cushion Type:	Oil API:	deg API
Mud Weight: 9.00 lb/gal	Cushion Length: ft	Water Salinity:	ppm
Viscosity: 50.00 sec/qt	Cushion Volume: bbl		
Water Loss: 7.60 in ³	Gas Cushion Type:		
Resistivity: ohm.m	Gas Cushion Pressure: psia		
Salinity: 5000.00 ppm			
Filter Cake: 1.00 inches			

Recovery Information

Recovery Table

Length ft	Description	Volume bbl
248.00	Muddy water 95%Mud 5%Water	1.509

Total Length: 248.00 ft Total Volume: 1.509 bbl
 Num Fluid Samples: 0 Num Gas Bombs: 0 Serial #:
 Laboratory Name: Laboratory Location:
 Recovery Comments:



Pressure vs. Time

