



DRILL STEM TEST REPORT

Prepared For: **Shelby Resources**

2717 Canal Blvd. Hays Kansas 67601

ATTN: Charlie Sturdavant

Penny 1-16

16-19s-12w-Barton

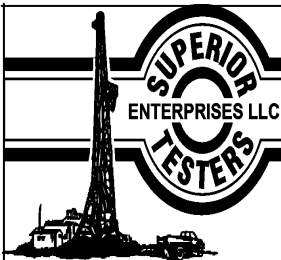
Start Date: 2012.10.05 @ 11:15:00

End Date: 2012.10.05 @ 19:12:00

Job Ticket #: 17854 DST #: 5

Superior Testers Enterprises LLC
PO Box 138 Great Bend KS 67530
1-800-792-6902

Printed: 2012.10.06 @ 05:28:19



DRILL STEM TEST REPORT

Shelby Resources
 2717 Canal Blvd. Hays Kansas 67601
 ATTN: Charlie Sturdavant

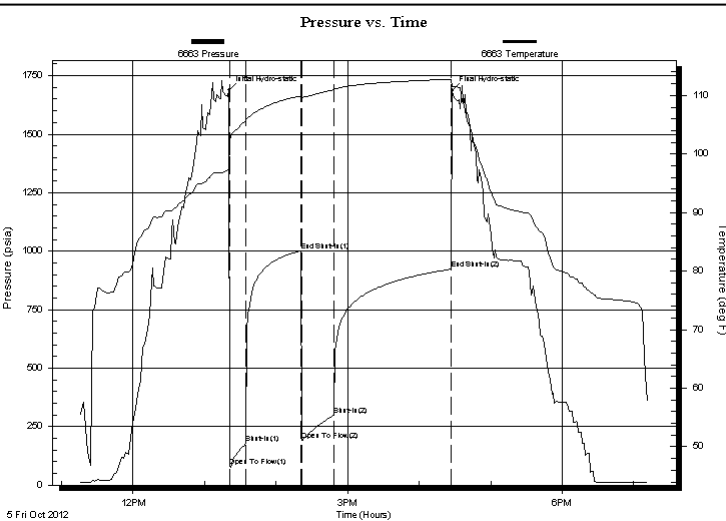
16-19s-12w-Barton
Penny 1-16
 Job Ticket: 17854 **DST#: 5**
 Test Start: 2012.10.05 @ 11:15:00

GENERAL INFORMATION:

Formation: **Arbuckle**
 Deviated: No Whipstock: ft (KB)
 Test Type: Conventional Bottom Hole (Initial)
 Time Tool Opened: 13:21:00 Tester: Dustin Ellis
 Time Test Ended: 19:12:00 Unit No: 3315 Great Bend-25
 Interval: **3465.00 ft (KB) To 4370.00 ft (KB) (TVD)** Reference Elevations: 1883.00 ft (KB)
 Total Depth: 4370.00 ft (KB) (TVD) 1874.00 ft (CF)
 Hole Diameter: 7.88 inches Hole Condition: Fair KB to GR/CF: 9.00 ft

Serial #: 6663 Inside
 Press @ Run Depth: 300.18 psia @ 3466.00 ft (KB) Capacity: 5000.00 psia
 Start Date: 2012.10.05 End Date: 2012.10.05 Last Calib.: 2012.10.06
 Start Time: 11:15:00 End Time: 19:12:00 Time On Btm: 2012.10.05 @ 13:20:30
 Time Off Btm: 2012.10.05 @ 16:27:30

TEST COMMENT: 1st Open 15 minutes Fair building blow blew bottom bucket 6 minutes
 1st Shut in 45 minutes No blow back
 2nd Open 30 minutes Fair building blow blew bottom bucket 6 minutes
 2nd Shut in 90 minutes No blow back



PRESSURE SUMMARY

Time (Min.)	Pressure (psia)	Temp (deg F)	Annotation
0	1687.44	97.41	Initial Hydro-static
1	80.35	101.92	Open To Flow (1)
14	177.05	105.65	Shut-In(1)
61	1001.97	109.92	End Shut-In(1)
61	190.06	109.71	Open To Flow (2)
88	300.18	110.98	Shut-In(2)
187	922.87	112.73	End Shut-In(2)
187	1686.30	111.51	Final Hydro-static

Recovery

Length (ft)	Description	Volume (bbl)
558.00	Clean free oil 100%	5.86
124.00	Oil cut mud 90%Oil Mud10%	1.74
0.00	Gravity of oil 37 corrected	0.00

Gas Rates

Choke (inches)	Pressure (psia)	Gas Rate (Mcf/d)



DRILL STEM TEST REPORT

Shelby Resources
 2717 Canal Blvd. Hays Kansas 67601
 ATTN: Charlie Sturdavant

16-19s-12w-Barton
Penny 1-16
 Job Ticket: 17854 **DST#: 5**
 Test Start: 2012.10.05 @ 11:15:00

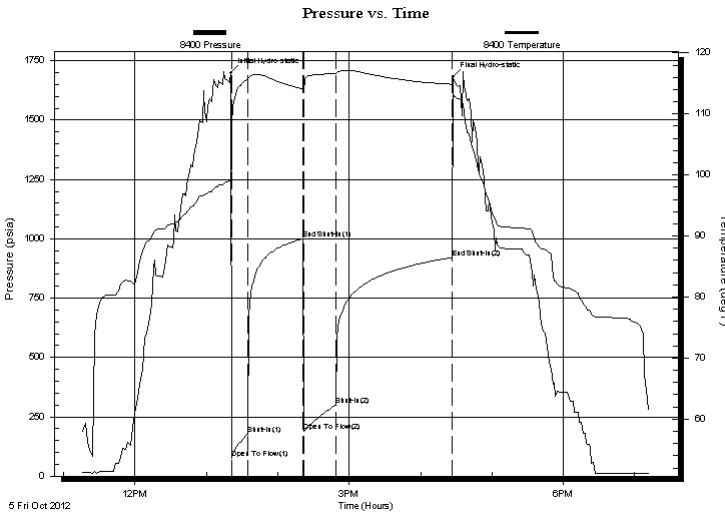
GENERAL INFORMATION:

Formation: **Arbuckle**
 Deviated: No Whipstock: ft (KB)
 Test Type: Conventional Bottom Hole (Initial)
 Time Tool Opened: 13:21:00 Tester: Dustin Ellis
 Time Test Ended: 19:12:00 Unit No: 3315 Great Bend-25
 Interval: **3465.00 ft (KB) To 4370.00 ft (KB) (TVD)** Reference Elevations: 1883.00 ft (KB)
 Total Depth: 4370.00 ft (KB) (TVD) 1874.00 ft (CF)
 Hole Diameter: 7.88 inches Hole Condition: Fair KB to GR/CF: 9.00 ft

Serial #: 8400 **Outside**
 Press @ RunDepth: 920.70 psia @ 3467.00 ft (KB) Capacity: 5000.00 psia
 Start Date: 2012.10.05 End Date: 2012.10.05 Last Calib.: 2012.10.06
 Start Time: 11:15:00 End Time: 19:12:30 Time On Btm: 2012.10.05 @ 13:20:30
 Time Off Btm: 2012.10.05 @ 16:27:30

TEST COMMENT: 1st Open 15 minutes Fair building blow blew bottom bucket 6 minutes
 1st Shut in 45 minutes No blow back
 2nd Open 30 minutes Fair building blow blew bottom bucket 6 minutes
 2nd Shut in 90 minutes No blow back

PRESSURE SUMMARY



Time (Min.)	Pressure (psia)	Temp (deg F)	Annotation
0	1699.86	99.16	Initial Hydro-static
1	73.75	102.21	Open To Flow (1)
14	175.78	115.62	Shut-In(1)
61	999.76	114.11	End Shut-In(1)
61	187.44	113.75	Open To Flow (2)
88	298.94	116.57	Shut-In(2)
186	920.70	114.86	End Shut-In(2)
187	1682.76	113.28	Final Hydro-static

Recovery

Length (ft)	Description	Volume (bbl)
558.00	Clean free oil 100%	5.86
124.00	Oil cut mud 90%Oil Mud10%	1.74
0.00	Gravity of oil 37 corrected	0.00

Gas Rates

Choke (inches)	Pressure (psia)	Gas Rate (Mcf/d)



DRILL STEM TEST REPORT

TOOL DIAGRAM

Shelby Resources
 2717 Canal Blvd. Hays Kansas 67601
 ATTN: Charlie Sturdavant

16-19s-12w-Barton
Penny 1-16
 Job Ticket: 17854 **DST#: 5**
 Test Start: 2012.10.05 @ 11:15:00

Tool Information

Drill Pipe:	Length: 3243.00 ft	Diameter: 3.80 inches	Volume: 45.49 bbl	Tool Weight: 2000.00 lb
Heavy Wt. Pipe:	Length: 0.00 ft	Diameter: 0.00 inches	Volume: 0.00 bbl	Weight set on Packer: 20000.00 lb
Drill Collar:	Length: 216.25 ft	Diameter: 2.25 inches	Volume: 1.06 bbl	Weight to Pull Loose: 75000.00 lb
			<u>Total Volume: 46.55 bbl</u>	Tool Chased 0.00 ft
Drill Pipe Above KB:	22.25 ft			String Weight: Initial 61000.00 lb
Depth to Top Packer:	3465.00 ft			Final 62000.00 lb
Depth to Bottom Packer:	ft			
Interval between Packers:	5.00 ft			
Tool Length:	33.00 ft			
Number of Packers:	2	Diameter: 6.75 inches		

Tool Comments:

Tool Description	Length (ft)	Serial No.	Position	Depth (ft)	Accum. Lengths
Shut-In Tool	5.00			3442.00	
Hydraulic Tool	5.00			3447.00	
Jars	6.00			3453.00	
Safety Joint	2.00			3455.00	
Packer	5.00			3460.00	28.00 Bottom Of Top Packer
Packer	5.00			3465.00	
Anchor	0.00			3465.00	
Recorder	1.00	6663	Inside	3466.00	
Recorder	1.00	8400	Outside	3467.00	
Bull Plug	3.00			3470.00	5.00 Bottom Packers & Anchor
Total Tool Length:	33.00				



DRILL STEM TEST REPORT

FLUID SUMMARY

Shelby Resources
2717 Canal Blvd. Hays Kansas 67601
ATTN: Charlie Sturdavant

16-19s-12w-Barton
Penny 1-16
Job Ticket: 17854 **DST#: 5**
Test Start: 2012.10.05 @ 11:15:00

Mud and Cushion Information

Mud Type:	Gel Chem	Cushion Type:		Oil API:	deg API
Mud Weight:	9.00 lb/gal	Cushion Length:	ft	Water Salinity:	ppm
Viscosity:	49.00 sec/qt	Cushion Volume:	bbbl		
Water Loss:	6.40 in ³	Gas Cushion Type:			
Resistivity:	ohm.m	Gas Cushion Pressure:	psia		
Salinity:	5000.00 ppm				
Filter Cake:	1.00 inches				

Recovery Information

Recovery Table

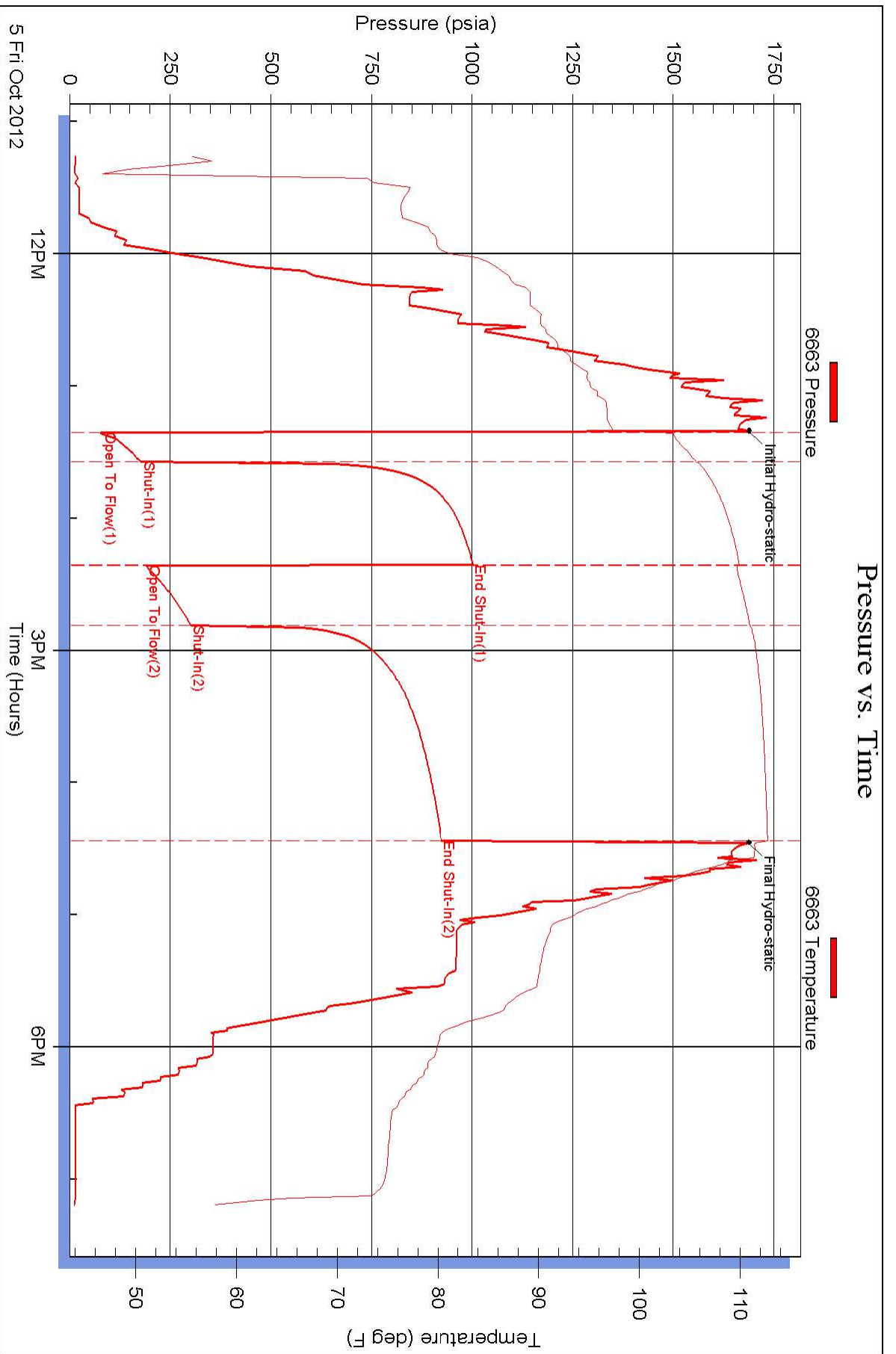
Length ft	Description	Volume bbl
558.00	Clean free oil 100%	5.857
124.00	Oil cut mud 90%Oil Mud10%	1.739
0.00	Gravity of oil 37 corrected	0.000

Total Length: 682.00 ft Total Volume: 7.596 bbl

Num Fluid Samples: 0 Num Gas Bombs: 0 Serial #:

Laboratory Name: Laboratory Location:

Recovery Comments:



Pressure vs. Time

