

Ls., gy, chlky, vf gr, gran - sli sdy, fri, fr intgran Por, n/s

Ls. wh, gy, vf gr, chlky, soft, n/s

Ls., vf gr, sing, firm, p vis por, sli chlky, shaly, n/s

Ls., wh, gy, vf gr, p vis por, firm, n/s

Ls., sdy, crm, gy, vf gr, p intgran Por, chlky, firm, n/s

Sh., blk

Sh., gy, firm

Ls., wh, gy, chlky, p vis por, n/s

Ls., crm, vf gr, sing, p intgran Por, firm-hd, n/s

Ls., crm, vf gr, sing, firm, p intgran Por, barren, no odr

Sh., gy, grn, soft

Ls., crm, vf gr, p intgran Por, n/s

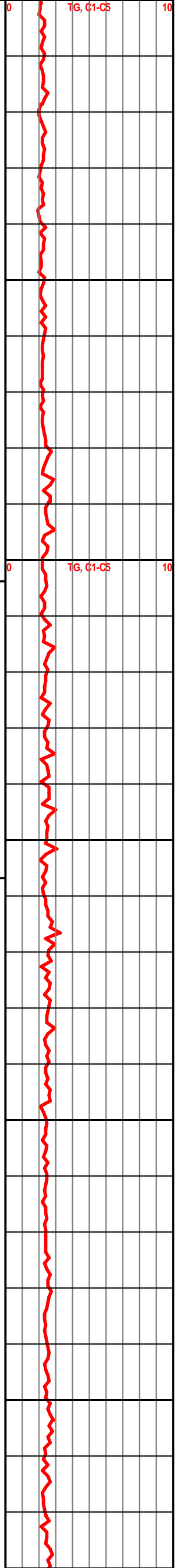
Ls. a.a.

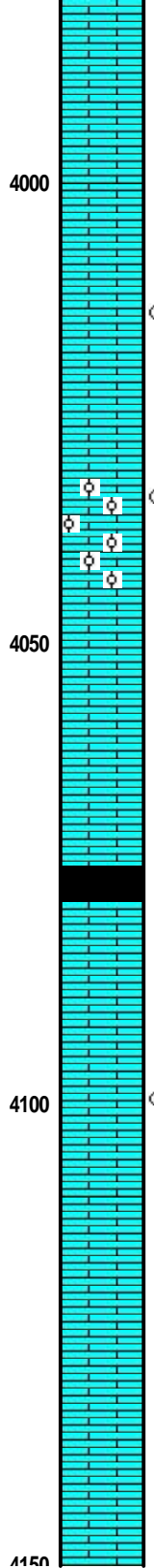
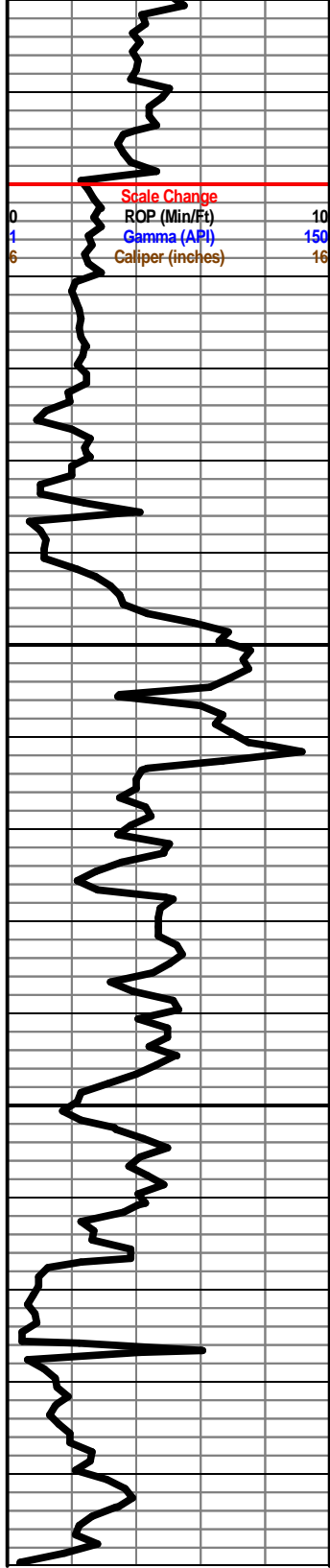
Ls., wh, crm, dnse, hd, n/s

Ls., wh, chlky, shaly, n/s

Heebner Sh 3804 (-894)

Lansing 3857 (-947)





Ls., crm, vf gr, p intgran Por, dnse, n/s

Ls., crm, vf gr, platy, p vis Por, n/s

Ls., crm, vf gr, p intgran por, rr vug Por, VSSFO, rr brn O strn, fri, chlky, wk fluor, no odr

Ls., crm, ool IP, fr -intool Por, SSFO, ft odr

Ls, wh, crm, sing, firm-hd, dnse, p vis Por, n/s

Ls., crm, wh, chlky, p intgran Por, n/s

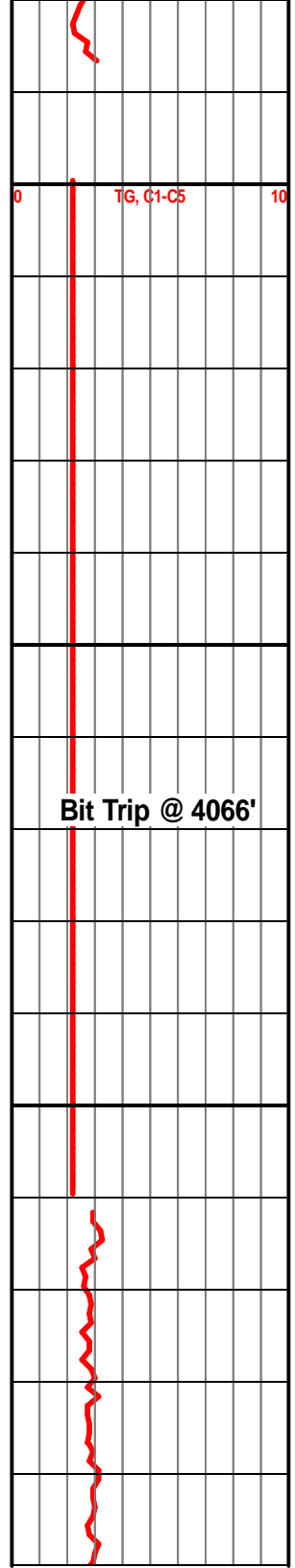
Sh., blk

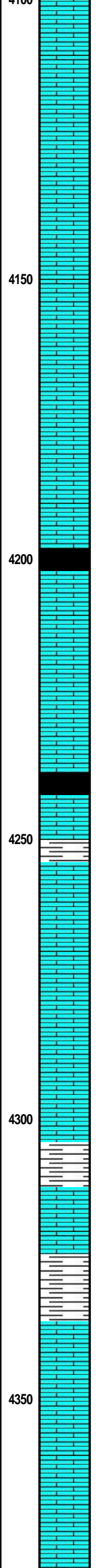
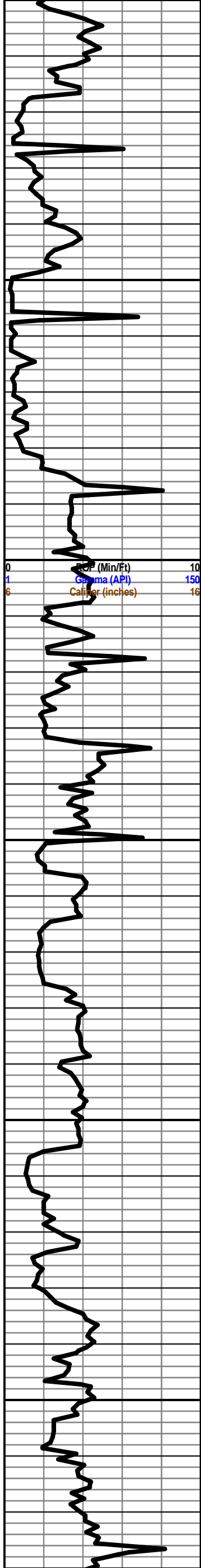
Ls., crm, brn, vf gr, rr vug Por, inc. wh-gy fresh Cht

Ls., crm, vf gr, ool IP, p intOOL Por, FSFO-lt brn, mod odr, scattered fluor

Ls., wh, crm, f gr, chlky-sbchlky, fr intgran por, fri, no odor

Ls., crm, gy, vf gr, Pintgran Por, rr vug, no odor





scattered fluor

Ls., wh, crm, f gr, chlky-sbchlky, fr intgran por, fri, no odor

Ls., crm, gy, vf gr, Pintgran Por, rr vug, no odor

Ls., wh crm, chlky IP, pred Ool., fr-gd Oom Por, n/s

Stark Sh. 4197 (-1287)

Sh., blk

Ls., tn, gy, shaly firm

Ls., crm, brn, Ool., vf gr, dense, fr-gd oom Por, fri, n/s

Hushpuckney Sh. 4239 (-1329)

Sh., blk

SH., gy, brn,

Ls., crm, tn, brn, vf gr, Ool IP, mottled, p intgran Por, firm, inc. fresh, wh, Cht., no odr

Ls., wh, crm, vf gr, p intgran Por, n/s

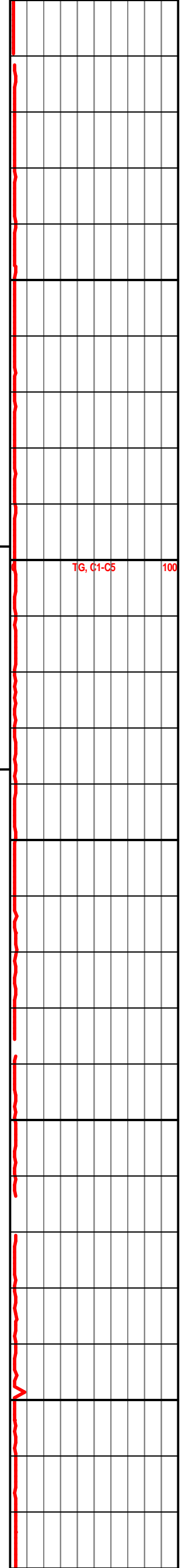
Ls., crm, gy, mottled, vf gr, p intgran por, firm, n.s

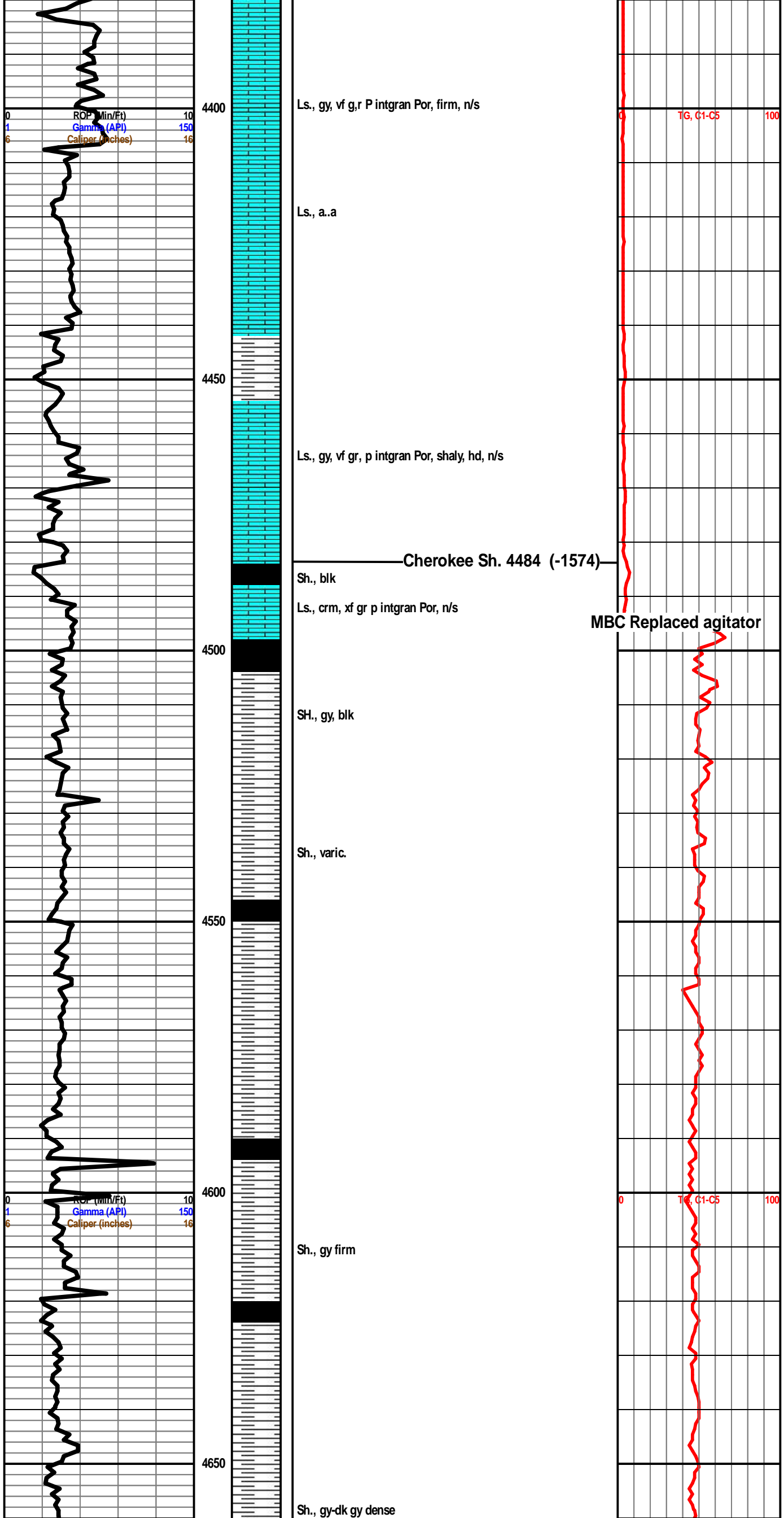
Sh., gy, fis

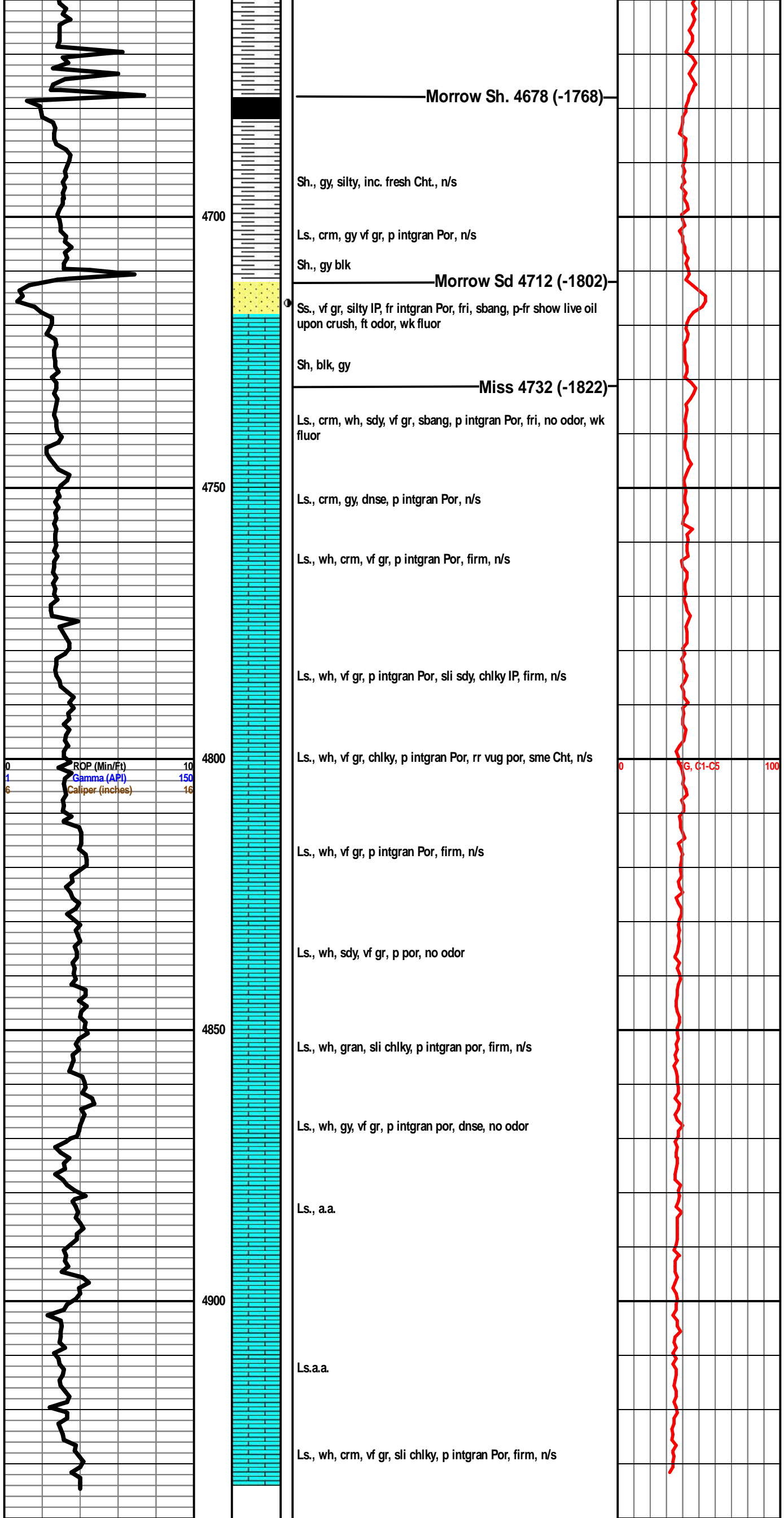
Sh., gy, soft

Ls., gy, mottled, vf gr, p intgran Por, n/s

Ls., gy, xf gr, p intgran Por, hd







Morrow Sh. 4678 (-1768)

Sh., gy, silty, inc. fresh Cht., n/s

Ls., crm, gy vf gr, p intgran Por, n/s

Sh., gy blk

Morrow Sd 4712 (-1802)

Ss., vf gr, silty IP, fr intgran Por, fri, sbang, p-fr show live oil upon crush, ft odor, wk fluor

Sh, blk, gy

Miss 4732 (-1822)

Ls., crm, wh, sdy, vf gr, sbang, p intgran Por, fri, no odor, wk fluor

Ls., crm, gy, dnse, p intgran Por, n/s

Ls., wh, crm, vf gr, p intgran Por, firm, n/s

Ls., wh, vf gr, p intgran Por, sli sdy, chlky IP, firm, n/s

Ls., wh, vf gr, chlky, p intgran Por, rr vug por, sme Cht, n/s

Ls., wh, vf gr, p intgran Por, firm, n/s

Ls., wh, sdy, vf gr, p por, no odor

Ls., wh, gran, sli chlky, p intgran por, firm, n/s

Ls., wh, gy, vf gr, p intgran por, dnse, no odor

Ls., a.a.

Ls.a.a.

Ls., wh, crm, vf gr, sli chlky, p intgran Por, firm, n/s

0 ROP (Min/Ft) 10  
 1 Gamma (API) 150  
 6 Caliper (inches) 16

0 G, C1-C5 100

