



**TRILOBITE TESTING, INC.**

# DRILL STEM TEST REPORT

Russell Oil Inc  
 Po Box 8050  
 Edmond Ok 73083  
 ATTN: Leroy Holt

**10-11s-23w-Trego**  
**Bollig N 1-10**  
 Job Ticket: 47785 **DST#: 2**  
 Test Start: 2012.06.19 @ 00:38:07

## GENERAL INFORMATION:

Formation: **LKC-G**  
 Deviated: No Whipstock: ft (KB)  
 Time Tool Opened: 02:41:37  
 Time Test Ended: 07:39:37  
 Interval: **3618.00 ft (KB) To 3630.00 ft (KB) (TVD)**  
 Total Depth: 3630.00 ft (KB) (TVD)  
 Hole Diameter: 7.88 inches Hole Condition: Good  
 Test Type: Conventional Bottom Hole (Reset)  
 Tester: Jeff Brown  
 Unit No: 44  
 Reference Elevations: 2277.00 ft (KB)  
 2269.00 ft (CF)  
 KB to GR/CF: 8.00 ft

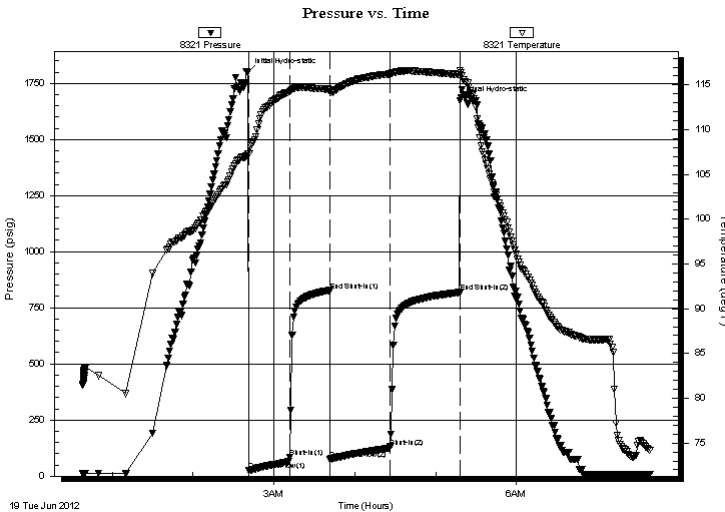
## Serial #: 8321

Inside

Press @ Run Depth: 130.34 psig @ 3619.00 ft (KB) Capacity: 8000.00 psig  
 Start Date: 2012.06.19 End Date: 2012.06.19 Last Calib.: 2012.06.19  
 Start Time: 00:38:08 End Time: 07:38:37 Time On Btm: 2012.06.19 @ 02:40:37  
 Time Off Btm: 2012.06.19 @ 05:18:07

TEST COMMENT: IFP-Good Blow BOB in 24 mins  
 ISI-Weak Surface Blow Back Built to 1/8 in  
 FFP-Good Blow BOB 21 mins  
 FSI-Weak Surface Blow Back Built to 1/2 in

## PRESSURE SUMMARY



Time (Min.)	Pressure (psig)	Temp (deg F)	Annotation
0	1796.71	107.34	Initial Hydro-static
1	25.54	107.29	Open To Flow (1)
31	85.15	114.24	Shut-In(1)
61	827.03	114.50	End Shut-In(1)
61	75.88	114.21	Open To Flow (2)
106	130.34	116.22	Shut-In(2)
157	818.77	116.16	End Shut-In(2)
158	1672.28	116.63	Final Hydro-static

## Recovery

Length (ft)	Description	Volume (bbl)
124.00	MW With Oil Spots 10% M 90% W	1.74
107.00	WM With Oil Spots 10% W 90 % M	1.50
5.00	Gassy Oil 5% G 95% Oil	0.07
0.00	201-GIP	0.00

\* Recovery from multiple tests

## Gas Rates

Choke (inches)	Pressure (psig)	Gas Rate (Mcf/d)



**TRILOBITE  
TESTING, INC.**

# DRILL STEM TEST REPORT

**FLUID SUMMARY**

Russell OilInc

**10-11s-23w-Trego**

Po Box 8050  
Edmond Ok 73083

**Bollig N 1-10**

Job Ticket: 47785

**DST#: 2**

ATTN: Leroy Holt

Test Start: 2012.06.19 @ 00:38:07

## Mud and Cushion Information

Mud Type: Gel Chem

Cushion Type:

Oil API:

36 deg API

Mud Weight: 9.00 lb/gal

Cushion Length:

ft

Water Salinity:

50000 ppm

Viscosity: 53.00 sec/qt

Cushion Volume:

bbbl

Water Loss: 6.39 in<sup>3</sup>

Gas Cushion Type:

Resistivity: ohm.m

Gas Cushion Pressure:

psig

Salinity: 1100.00 ppm

Filter Cake: inches

## Recovery Information

Recovery Table

Length ft	Description	Volume bbbl
124.00	MW With Oil Spots 10% M 90% W	1.739
107.00	WM With Oil Spots 10% W 90 % M	1.501
5.00	Gassy Oil 5% G 95% Oil	0.070
0.00	201-GIP	0.000

Total Length: 236.00 ft

Total Volume: 3.310 bbl

Num Fluid Samples: 0

Num Gas Bombs: 0

Serial #:

Laboratory Name:

Laboratory Location:

Recovery Comments:

