



**TRILOBITE TESTING, INC.**

# DRILL STEM TEST REPORT

Russell Oil Inc  
 Po Box 8050  
 Edmond Ok 73083  
 ATTN: Leroy Holt

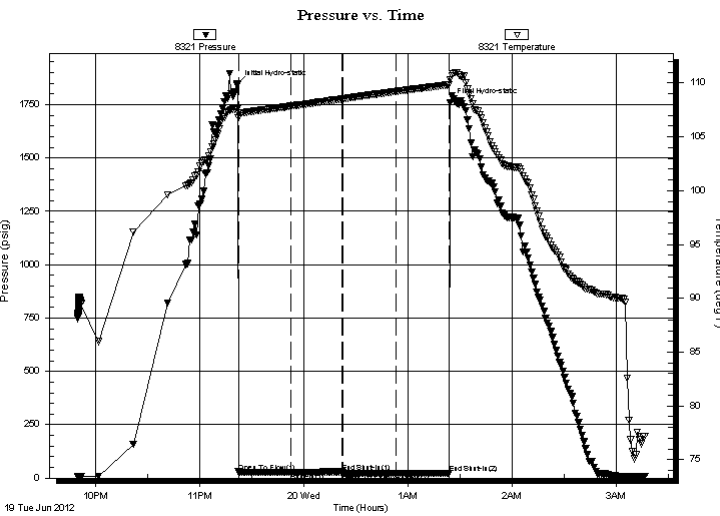
**10-11s-23w-Trego**  
**Bollig N 1-10**  
 Job Ticket: 47786 **DST#: 3**  
 Test Start: 2012.06.19 @ 21:49:34

## GENERAL INFORMATION:

Formation: **LCK-I-J**  
 Deviated: No Whipstock: ft (KB)  
 Test Type: Conventional Bottom Hole (Reset)  
 Time Tool Opened: 23:22:04 Tester: Jeff Brown  
 Time Test Ended: 03:16:04 Unit No: 44  
 Interval: **3675.00 ft (KB) To 3718.00 ft (KB) (TVD)** Reference Elevations: 2277.00 ft (KB)  
 Total Depth: 3718.00 ft (KB) (TVD) 2269.00 ft (CF)  
 Hole Diameter: 7.88 inches Hole Condition: Good KB to GR/CF: 8.00 ft

**Serial #: 8321 Inside**  
 Press @ Run Depth: 22.12 psig @ 3679.00 ft (KB) Capacity: 8000.00 psig  
 Start Date: 2012.06.19 End Date: 2012.06.20 Last Calib.: 2012.06.20  
 Start Time: 21:49:35 End Time: 03:16:04 Time On Btm: 2012.06.19 @ 23:21:34  
 Time Off Btm: 2012.06.20 @ 01:24:04

**TEST COMMENT:** IFP-Weak Surface Blow Died Out 28 mins  
 ISI-Dead No Blow Back  
 FFP-Dead Flushed Tool -Dead  
 FSI-Dead no blow back



## PRESSURE SUMMARY

Time (Min.)	Pressure (psig)	Temp (deg F)	Annotation
0	1846.23	107.60	Initial Hydro-static
1	28.91	106.77	Open To Flow (1)
31	26.67	107.86	Shut-In(1)
60	29.36	108.53	End Shut-In(1)
61	24.99	108.54	Open To Flow (2)
91	22.12	109.22	Shut-In(2)
122	23.20	109.85	End Shut-In(2)
123	1757.56	110.31	Final Hydro-static

## Recovery

Length (ft)	Description	Volume (bbl)
1.00	Mud	0.01

\* Recovery from multiple tests

## Gas Rates

Choke (inches)	Pressure (psig)	Gas Rate (Mcf/d)



**TRILOBITE  
TESTING, INC.**

# DRILL STEM TEST REPORT

**FLUID SUMMARY**

Russell OilInc

**10-11s-23w-Trego**

Po Box 8050  
Edmond Ok 73083

**Bollig N 1-10**

Job Ticket: 47786

**DST#: 3**

ATTN: Leroy Holt

Test Start: 2012.06.19 @ 21:49:34

## Mud and Cushion Information

Mud Type: Gel Chem

Cushion Type:

Oil API:

deg API

Mud Weight: 9.00 lb/gal

Cushion Length:

ft

Water Salinity:

ppm

Viscosity: 50.00 sec/qt

Cushion Volume:

bbbl

Water Loss: 6.80 in<sup>3</sup>

Gas Cushion Type:

Resistivity: ohm.m

Gas Cushion Pressure:

psig

Salinity: 1700.00 ppm

Filter Cake: inches

## Recovery Information

Recovery Table

Length ft	Description	Volume bbl
1.00	Mud	0.014

Total Length: 1.00 ft      Total Volume: 0.014 bbl

Num Fluid Samples: 0

Num Gas Bombs: 0

Serial #:

Laboratory Name:

Laboratory Location:

Recovery Comments:

Serial #: 8321

Inside

Russell Clinic

Bolig N-1-10

DST Test Number: 3

