



DRILL STEM TEST REPORT

Prepared For: **Shelby Resources LLC**

2717 Canal Blvd. Suite C
Hays Kansas 67601

ATTN: Keith Reavis

Beren Trust 2-9

9-17s-14w-Barton

Start Date: 2012.07.04 @ 11:59:00

End Date: 2012.07.04 @ 17:42:30

Job Ticket #: 17694 DST #: 4

Superior Testers Enterprises LLC
PO Box 138 Great Bend KS 67530
1-800-792-6902

Printed: 2012.07.04 @ 15:57:13



DRILL STEM TEST REPORT

Shelby Resources LLC
 2717 Canal Blvd. Suite C
 Hays Kansas 67601
 ATTN: Keith Reavis

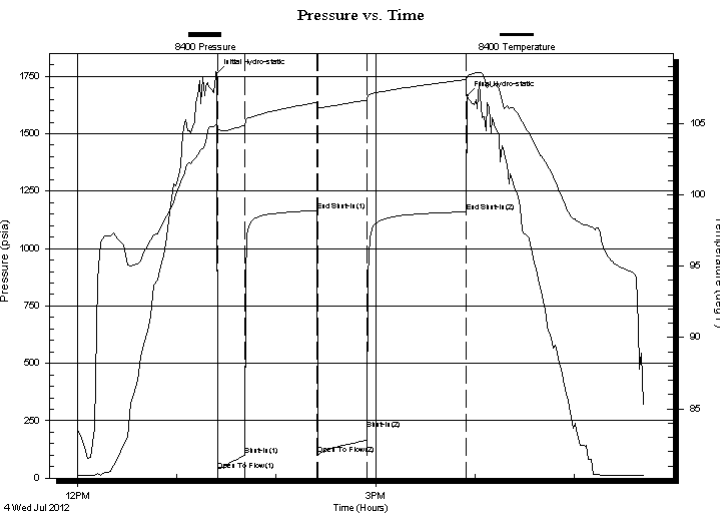
9-17s-14w-Barton
Beren Trust 2-9
 Job Ticket: 17694 **DST#: 4**
 Test Start: 2012.07.04 @ 11:59:00

GENERAL INFORMATION:

Formation: **Arbuckle**
 Deviated: No Whipstock: ft (KB)
 Time Tool Opened: 13:24:30
 Time Test Ended: 17:42:30
 Interval: **3498.00 ft (KB) To 3508.00 ft (KB) (TVD)**
 Total Depth: 3508.00 ft (KB) (TVD)
 Hole Diameter: 7.88 inches Hole Condition: Fair
 Test Type: Conventional Bottom Hole (Initial)
 Tester: Dustin Ellis
 Unit No: 3315-Great Bend-42
 Reference Elevations: 1970.00 ft (KB)
 1961.00 ft (CF)
 KB to GR/CF: 9.00 ft

Serial #: 8400 Outside
 Press @ Run Depth: 211.29 psia @ 3505.00 ft (KB) Capacity: 5000.00 psia
 Start Date: 2012.07.04 End Date: 2012.07.04 Last Calib.: 2012.07.04
 Start Time: 11:59:00 End Time: 17:42:30 Time On Btm: 2012.07.04 @ 13:24:00
 Time Off Btm: 2012.07.04 @ 15:55:30

TEST COMMENT: 1st Open 15 minutes Fair building blow built to 4 inches .
 1st Shut in 45 minutes No blow back
 2nd Open 30 minutes Fair building blow built 9 inches
 2nd Shut in 60 minutes No blow back



PRESSURE SUMMARY

Time (Min.)	Pressure (psia)	Temp (deg F)	Annotation
0	1763.67	104.94	Initial Hydro-static
1	36.12	104.48	Open To Flow (1)
17	100.14	104.86	Shut-In(1)
61	1164.16	106.46	End Shut-In(1)
61	103.24	106.08	Open To Flow (2)
91	211.29	106.67	Shut-In(2)
151	1159.57	108.06	End Shut-In(2)
152	1664.85	108.28	Final Hydro-static

Recovery

Length (ft)	Description	Volume (bbl)
278.00	Salt w ater 100%	1.97

Gas Rates

Choke (inches)	Pressure (psia)	Gas Rate (Mcf/d)



DRILL STEM TEST REPORT

Shelby Resources LLC
 2717 Canal Blvd. Suite C
 Hays Kansas 67601
 ATTN: Keith Reavis

9-17s-14w-Barton

Beren Trust 2-9

Job Ticket: 17694 **DST#: 4**
 Test Start: 2012.07.04 @ 11:59:00

GENERAL INFORMATION:

Formation: **Arbuckle**
 Deviated: No Whipstock: ft (KB)
 Time Tool Opened: 13:24:30
 Time Test Ended: 17:42:30
 Interval: **3498.00 ft (KB) To 3508.00 ft (KB) (TVD)**
 Total Depth: 3508.00 ft (KB) (TVD)
 Hole Diameter: 7.88 inches Hole Condition: Fair
 Test Type: Conventional Bottom Hole (Initial)
 Tester: Dustin Ellis
 Unit No: 3315-Great Bend-42
 Reference Elevations: 1970.00 ft (KB)
 1961.00 ft (CF)
 KB to GR/CF: 9.00 ft

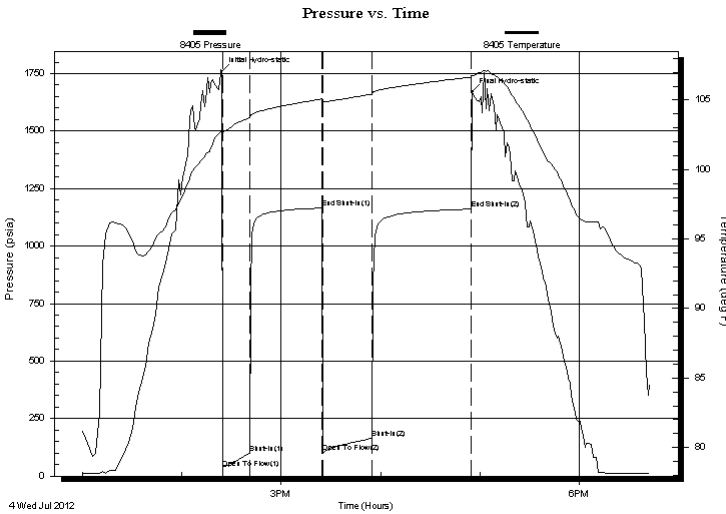
Serial #: 8405 Inside

Press @ Run Depth: 1160.27 psia @ 3504.00 ft (KB) Capacity: 5000.00 psia
 Start Date: 2012.07.04 End Date: 2012.07.04 Last Calib.: 2012.07.04
 Start Time: 12:59:00 End Time: 18:42:30 Time On Btm: 2012.07.04 @ 14:24:00
 Time Off Btm: 2012.07.04 @ 16:55:30

TEST COMMENT: 1st Open 15 minutes Fair building blow built to 4 inches .
 1st Shut in 45 minutes No blow back
 2nd Open 30 minutes Fair building blow built 9 inches
 2nd Shut in 60 minutes No blow back

PRESSURE SUMMARY

Time (Min.)	Pressure (psia)	Temp (deg F)	Annotation
0	1760.24	102.84	Initial Hydro-static
1	35.57	102.58	Open To Flow (1)
17	98.49	103.72	Shut-In(1)
61	1164.85	105.08	End Shut-In(1)
61	102.30	104.88	Open To Flow (2)
91	164.95	105.43	Shut-In(2)
151	1160.27	106.66	End Shut-In(2)
152	1669.10	106.77	Final Hydro-static



Recovery

Length (ft)	Description	Volume (bbl)
278.00	Salt w ater 100%	1.97

Gas Rates

Choke (inches)	Pressure (psia)	Gas Rate (Mcf/d)



DRILL STEM TEST REPORT

TOOL DIAGRAM

Shelby Resources LLC
 2717 Canal Blvd. Suite C
 Hays Kansas 67601
 ATTN: Keith Reavis

9-17s-14w-Barton
Beren Trust 2-9
 Job Ticket: 17694 **DST#: 4**
 Test Start: 2012.07.04 @ 11:59:00

Tool Information

Drill Pipe:	Length: 3285.00 ft	Diameter: 3.80 inches	Volume: 46.08 bbl	Tool Weight: 2000.00 lb
Heavy Wt. Pipe:	Length: 0.00 ft	Diameter: 0.00 inches	Volume: 0.00 bbl	Weight set on Packer: 20000.00 lb
Drill Collar:	Length: 211.96 ft	Diameter: 2.25 inches	Volume: 1.04 bbl	Weight to Pull Loose: 70000.00 lb
			<u>Total Volume: 47.12 bbl</u>	Tool Chased 1.00 ft
Drill Pipe Above KB:	26.96 ft			String Weight: Initial 65000.00 lb
Depth to Top Packer:	3498.00 ft			Final 65000.00 lb
Depth to Bottom Packer:	ft			
Interval between Packers:	10.00 ft			
Tool Length:	38.00 ft			
Number of Packers:	2	Diameter: 6.75 inches		

Tool Comments:

Tool Description	Length (ft)	Serial No.	Position	Depth (ft)	Accum. Lengths
Shut-In Tool	5.00			3475.00	
Hydraulic Tool	5.00			3480.00	
Jars	6.00			3486.00	
Safety Joint	2.00			3488.00	
Packer	5.00			3493.00	28.00 Bottom Of Top Packer
Packer	5.00			3498.00	
Anchor	5.00			3503.00	
Recorder	1.00	8405	Inside	3504.00	
Recorder	1.00	8400	Outside	3505.00	
Bull Plug	3.00			3508.00	10.00 Bottom Packers & Anchor
Total Tool Length:	38.00				



DRILL STEM TEST REPORT

FLUID SUMMARY

Shelby Resources LLC
2717 Canal Blvd. Suite C
Hays Kansas 67601
ATTN: Keith Reavis

9-17s-14w-Barton
Beren Trust 2-9
Job Ticket: 17694 **DST#: 4**
Test Start: 2012.07.04 @ 11:59:00

Mud and Cushion Information

Mud Type: Gel Chem	Cushion Type:	Oil API:	deg API
Mud Weight: 9.00 lb/gal	Cushion Length: ft	Water Salinity:	ppm
Viscosity: 58.00 sec/qt	Cushion Volume: bbl		
Water Loss: 8.80 in ³	Gas Cushion Type:		
Resistivity: 0.20 ohm.m	Gas Cushion Pressure: psia		
Salinity: 6300.00 ppm			
Filter Cake: 1.00 inches			

Recovery Information

Recovery Table

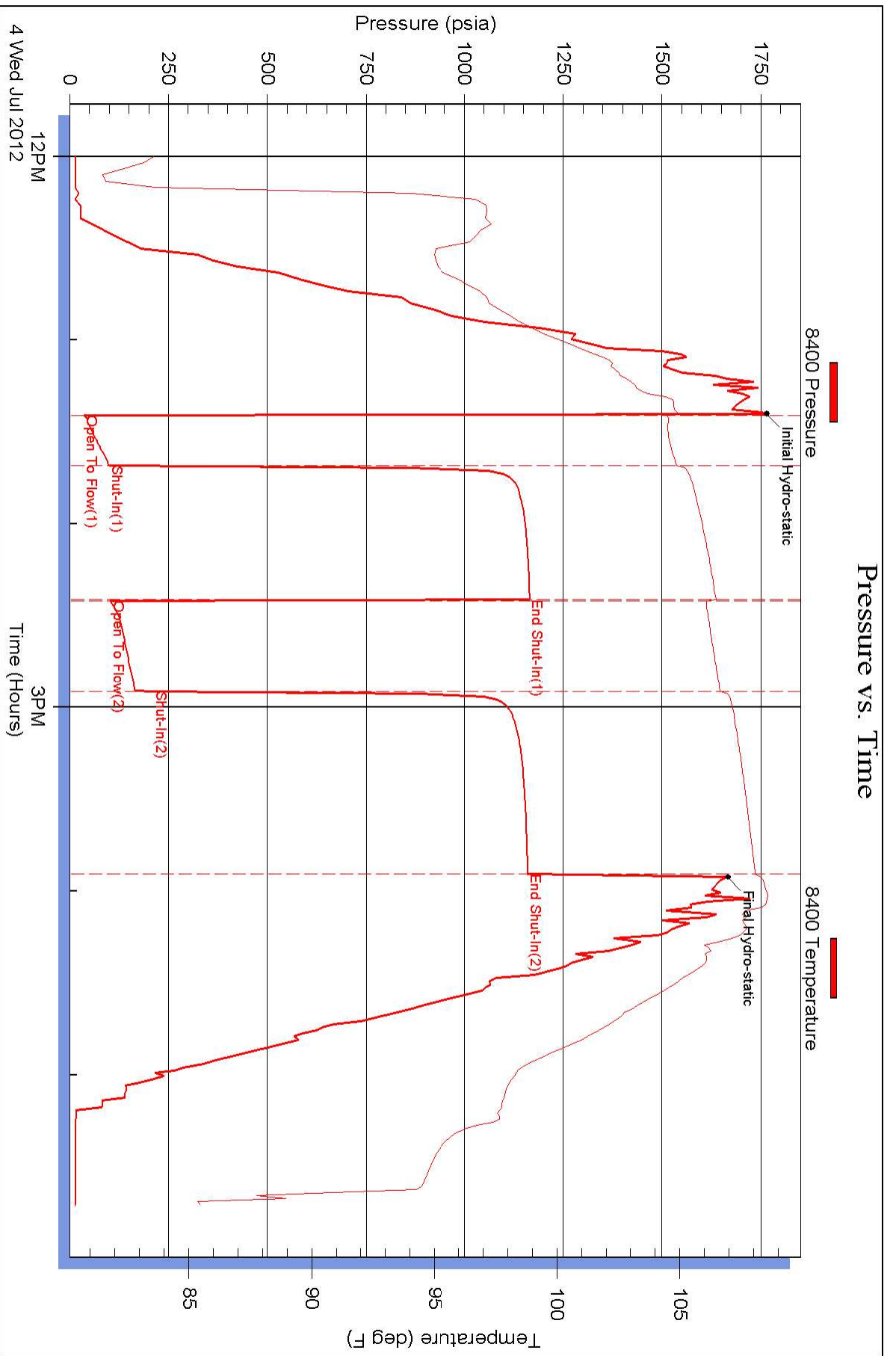
Length ft	Description	Volume bbl
278.00	Salt water 100%	1.969

Total Length: 278.00 ft Total Volume: 1.969 bbl

Num Fluid Samples: 0 Num Gas Bombs: 0 Serial #:

Laboratory Name: Laboratory Location:

Recovery Comments:



Pressure vs. Time

