



TRILOBITE TESTING, INC.

DRILL STEM TEST REPORT

Grand Mesa Operating Co.

17-11s-26w-Gove

1700 N. Waterfront Parkway
 Building 600
 Wichita, KS. 67206
 ATTN: Bob Schreiber

QR #1-17

Job Ticket: 48707

DST#: 3

Test Start: 2012.10.14 @ 19:40:03

GENERAL INFORMATION:

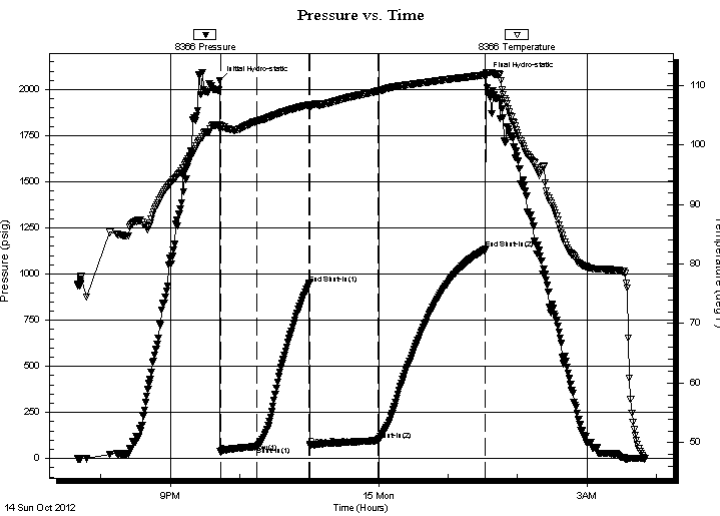
Formation: **H-I**
 Deviated: No Whipstock: 0.00 ft (KB)
 Time Tool Opened: 21:43:11
 Time Test Ended: 03:50:11
 Interval: **4035.00 ft (KB) To 4092.00 ft (KB) (TVD)**
 Total Depth: 4092.00 ft (KB) (TVD)
 Hole Diameter: 7.80 inches Hole Condition: Good
 Test Type: Conventional Bottom Hole (Reset)
 Tester: Jason McLemore
 Unit No: 54
 Reference Elevations: 2652.00 ft (KB)
 2647.00 ft (CF)
 KB to GR/CF: 5.00 ft

Serial #: 8366

Inside

Press @ Run Depth: 97.66 psig @ 4074.00 ft (KB)
 Start Date: 2012.10.14 End Date: 2012.10.15
 Start Time: 19:40:05 End Time: 03:50:11
 Capacity: 8000.00 psig
 Last Calib.: 2012.10.15
 Time On Btm: 2012.10.14 @ 21:42:41
 Time Off Btm: 2012.10.15 @ 01:32:41

TEST COMMENT: IFP-Weak Blow , Built to 4"
 ISI-Dead
 FFP-Weak Blow , Built to 3"
 FSI-Dead



PRESSURE SUMMARY

Time (Min.)	Pressure (psig)	Temp (deg F)	Annotation
0	2048.83	103.35	Initial Hydro-static
1	35.89	102.65	Open To Flow (1)
33	65.37	103.99	Shut-In(1)
78	948.48	106.73	End Shut-In(1)
79	73.46	106.44	Open To Flow (2)
137	97.66	108.99	Shut-In(2)
230	1133.89	111.72	End Shut-In(2)
230	2070.04	112.06	Final Hydro-static

Recovery

Length (ft)	Description	Volume (bbl)
125.00	Oil Cut Mud-35%O-65%M	0.61

* Recovery from multiple tests

Gas Rates

Choke (inches)	Pressure (psig)	Gas Rate (Mcf/d)



TRILOBITE
TESTING, INC.

DRILL STEM TEST REPORT

FLUID SUMMARY

Grand Mesa Operating Co.

17-11s-26w-Gove

1700 N. Waterfront Parkway
Building 600
Wichita, KS. 67206
ATTN: Bob Schreiber

QR #1-17

Job Ticket: 48707

DST#: 3

Test Start: 2012.10.14 @ 19:40:03

Mud and Cushion Information

Mud Type: Gel Chem

Mud Weight: 10.00 lb/gal

Viscosity: 48.00 sec/qt

Water Loss: 8.79 in³

Resistivity: ohm.m

Salinity: 3100.00 ppm

Filter Cake: inches

Cushion Type:

Cushion Length: ft

Cushion Volume: bbl

Gas Cushion Type:

Gas Cushion Pressure: psig

Oil API:

Water Salinity: deg API

ppm

Recovery Information

Recovery Table

Length ft	Description	Volume bbl
125.00	Oil Cut Mud-35%O-65%M	0.615

Total Length: 125.00 ft Total Volume: 0.615 bbl

Num Fluid Samples: 0

Num Gas Bombs: 0

Serial #:

Laboratory Name:

Laboratory Location:

Recovery Comments:

Pressure vs. Time

