



**TRILOBITE  
TESTING, INC.**

# DRILL STEM TEST REPORT

Strata Expl.Inc.

**6-27s-19w Kiowa Ks.**

P.O.Box 401  
Fairfield Il. 62837

**Rose#1-6**

Job Ticket: 47585

**DST#: 4**

ATTN: Jon Christensen

Test Start: 2012.07.22 @ 15:12:43

## GENERAL INFORMATION:

Formation: **Miss.**

Deviated: No Whipstock: ft (KB)

Time Tool Opened: 17:33:28

Time Test Ended: 00:00:58

Test Type: Conventional Bottom Hole (Reset)

Tester: Gary Pevoteaux

Unit No: 56

**Interval: 4829.00 ft (KB) To 4845.00 ft (KB) (TVD)**

Reference Elevations: 2263.00 ft (KB)

Total Depth: 4845.00 ft (KB) (TVD)

2252.00 ft (CF)

Hole Diameter: 7.88 inches Hole Condition: Fair

KB to GR/CF: 11.00 ft

**Serial #: 8352 Outside**

Press @ Run Depth: 78.26 psig @ 4830.00 ft (KB)

Capacity: 8000.00 psig

Start Date: 2012.07.22

End Date:

2012.07.23

Last Calib.:

2012.07.23

Start Time: 15:12:48

End Time:

00:00:58

Time On Btm:

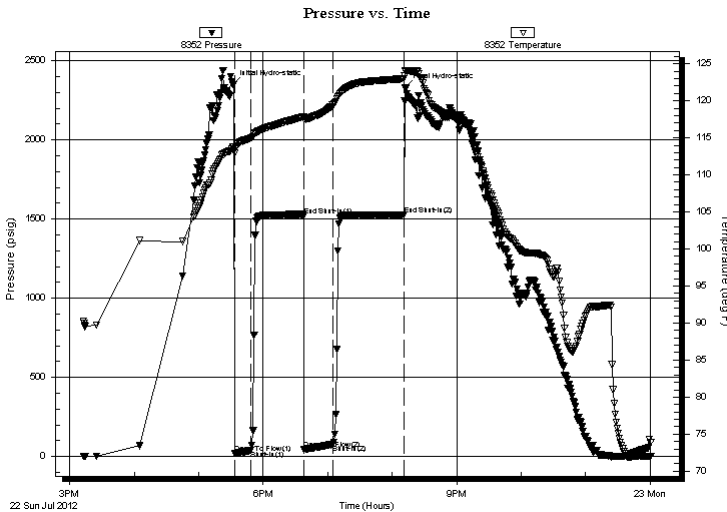
2012.07.22 @ 17:31:58

Time Off Btm:

2012.07.22 @ 20:12:13

**TEST COMMENT:** IF:Weak blow . Slow increase to 1 1/2".  
IS:No blow .  
FF:Weak blow . Slow increase to 1 1/2".  
FS:No blow .

## PRESSURE SUMMARY



| Time (Min.) | Pressure (psig) | Temp (deg F) | Annotation           |
|-------------|-----------------|--------------|----------------------|
| 0           | 2348.47         | 113.80       | Initial Hydro-static |
| 2           | 18.72           | 112.91       | Open To Flow (1)     |
| 17          | 40.29           | 114.98       | Shut-In(1)           |
| 66          | 1519.71         | 117.84       | End Shut-In(1)       |
| 66          | 45.97           | 117.50       | Open To Flow (2)     |
| 93          | 78.26           | 119.46       | Shut-In(2)           |
| 159         | 1527.61         | 123.00       | End Shut-In(2)       |
| 161         | 2331.21         | 124.04       | Final Hydro-static   |

## Recovery

| Length (ft) | Description         | Volume (bbl) |
|-------------|---------------------|--------------|
| 65.00       | SOCMW 4%o 48%w 48%w | 0.32         |
| 0.00        | RW .08ohms @83deg   | 0.00         |
| 60.00       | OCVM 24%o 16%w 60%w | 0.30         |
| 5.00        | Clean oil           | 0.02         |
|             |                     |              |
|             |                     |              |

## Gas Rates

|  | Choke (inches) | Pressure (psig) | Gas Rate (Mcf/d) |
|--|----------------|-----------------|------------------|
|  |                |                 |                  |

\* Recovery from multiple tests





**TRILOBITE  
TESTING, INC.**

# DRILL STEM TEST REPORT

**FLUID SUMMARY**

Strata Expl.Inc.

**6-27s-19w Kiowa Ks.**

P.O.Box 401  
Fairfield Il. 62837

**Rose#1-6**

Job Ticket: 47585

**DST#: 4**

ATTN: Jon Christensen

Test Start: 2012.07.22 @ 15:12:43

## Mud and Cushion Information

Mud Type: Gel Chem

Cushion Type:

Oil API:

deg API

Mud Weight: 9.00 lb/gal

Cushion Length:

ft

Water Salinity:

83000 ppm

Viscosity: 53.00 sec/qt

Cushion Volume:

bbbl

Water Loss: 11.59 in<sup>3</sup>

Gas Cushion Type:

Resistivity: 0.00 ohm.m

Gas Cushion Pressure:

psig

Salinity: 7800.00 ppm

Filter Cake: 0.20 inches

## Recovery Information

Recovery Table

| Length<br>ft | Description         | Volume<br>bbbl |
|--------------|---------------------|----------------|
| 65.00        | SOCMW 4%o 48%m 48%w | 0.320          |
| 0.00         | RW .08ohms @83deg   | 0.000          |
| 60.00        | OCWM 24%o 16%w 60%m | 0.295          |
| 5.00         | Clean oil           | 0.025          |

Total Length: 130.00 ft

Total Volume: 0.640 bbl

Num Fluid Samples: 0

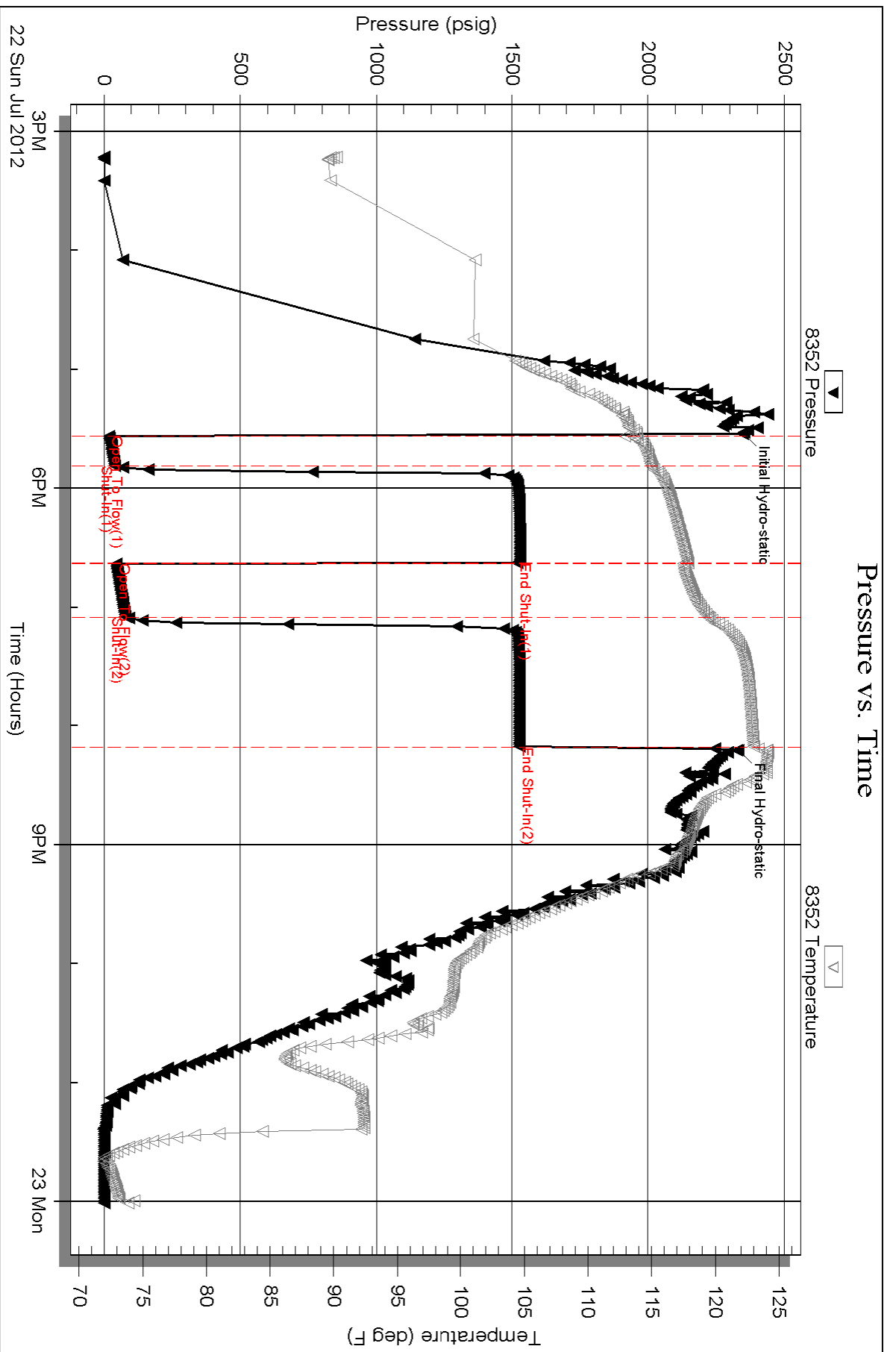
Num Gas Bombs: 0

Serial #: none

Laboratory Name:

Laboratory Location:

Recovery Comments:



Serial #: 8370

Inside

Strata Expl. Inc.

Rose#1-6

DST Test Number: 4

