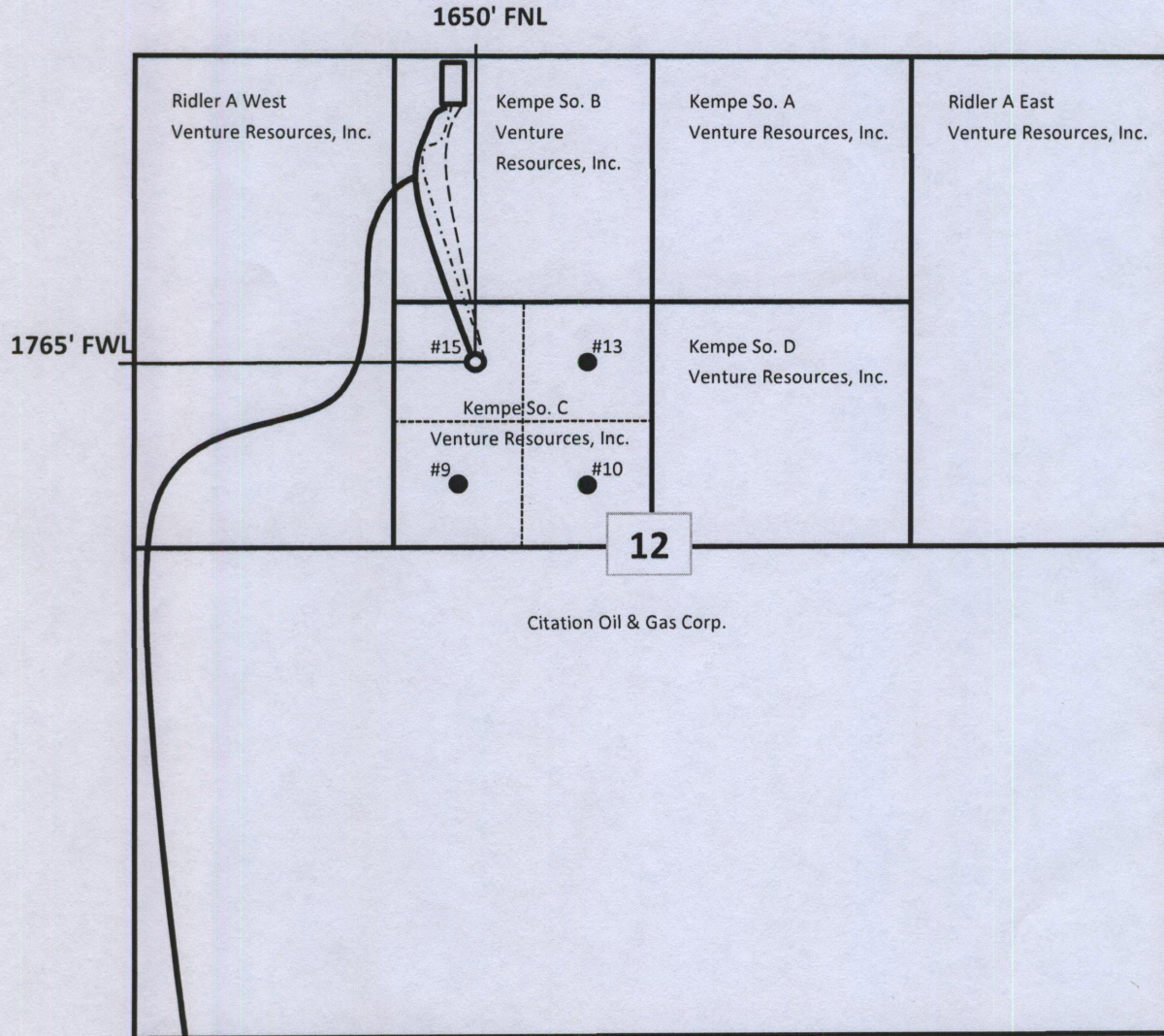


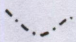
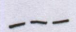


NOTICE OF INTENT TO DRILL - PLAT

Venture Resources, Inc.
 Kempe South C #15
 1650' FNL & 1765' FWL * (See Note Below)
 Section 12, T11S-R18W
 Ellis County, KS
 Bemis-Shutts Field



* Note: Topography prevents us from locating the proposed well site in the center of the NW/4SE/4NW/4 Section 12. There is a deep drainage gully where water occasionally flows through said center point. Therefore, we have moved the location 115 feet further east to avoid the gully.

-  Tank Battery
-  Lease Road
-  Electric Line
-  Pipeline