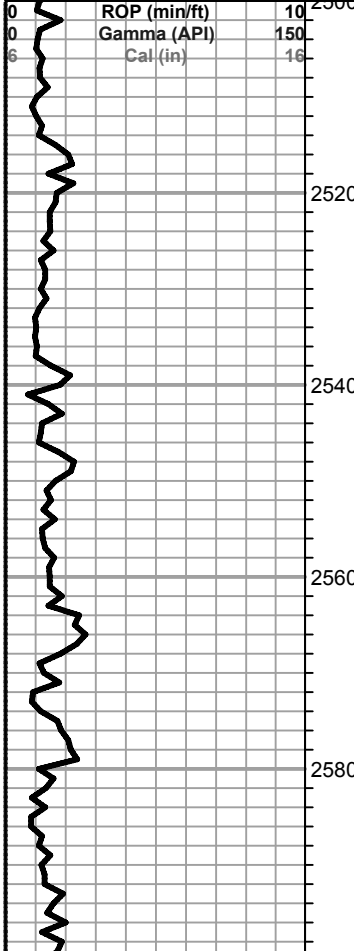
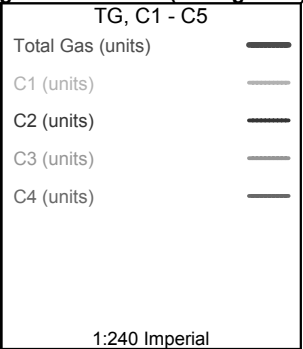


DST

Lithology

Oil Show

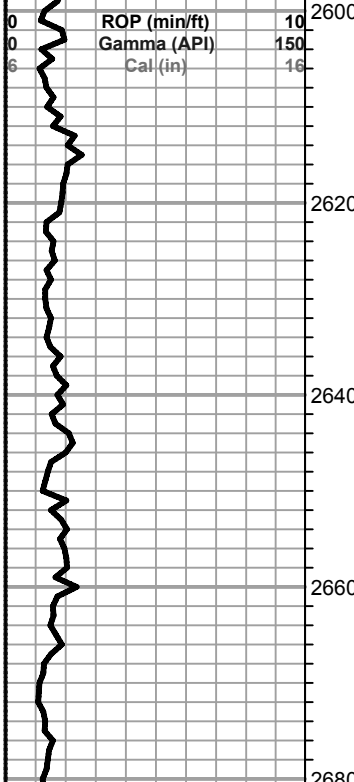
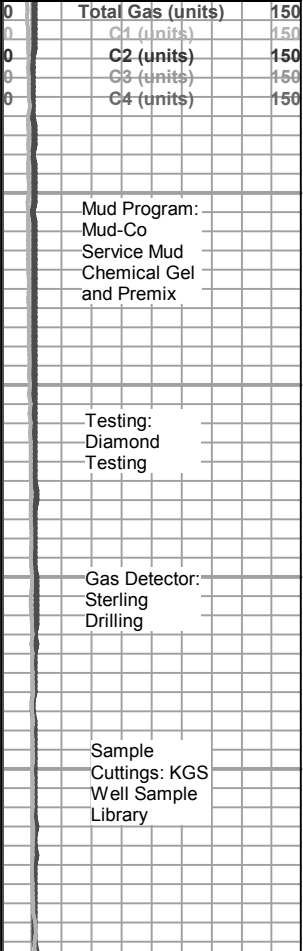
Geological Descriptions



Cored Interval

DST Interval

**Falcon Exploration, Inc**  
**Carl Love No. 1-1 (NE)**  
**C NE NE**  
**660' FNL & 660' FEL**  
**Sec 1 T28S R30W**  
**Gray County, Kansas**  
**GL 2778 KB 2791**



DST

Lithology

Oil Show

Dolo-gry/lt gry micro to fxln mhd no por

Dolo-AA

Sh-gry/dk gry/red

-----Chase 2635 +156-----

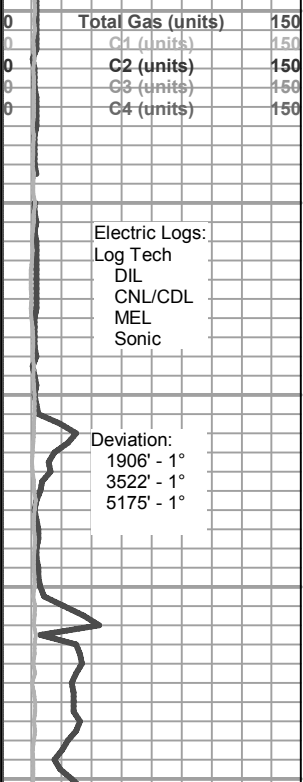
Dolo-gry/lt gry micro to fxln mhd no por

Dolo-AA

Dolo-gry/lt gry micro to fxln mhd no por

Dolo-AA

Dolo-gry/lt gry micro to fxln mhd no por



Mud Program:  
 Mud-Co  
 Service Mud  
 Chemical Gel  
 and Premix

Testing:  
 Diamond  
 Testing

Gas Detector:  
 Sterling  
 Drilling

Sample  
 Cuttings: KGS  
 Well Sample  
 Library

Electric Logs:  
 Log Tech  
 DIL  
 CNL/CDL  
 MEL  
 Sonic

Deviation:  
 1906' - 1°  
 3522' - 1°  
 5175' - 1°

2700  
2720  
2740  
2760  
2780  
2800  
2820  
2840  
2860  
2880  
2900

Dolo-AA

Sh-gry/dk gry/red

-----Winfield 2714 +77-----

Dolo-gry/dk gry micro to fxln sl mottled sl fos soft/mhd no por

Dolo-AA

Dolo-gry/dk gry micro to fxln sl mottled sl fos mhd no por

Sh-gry/dk gry/red

Sh-AA

-----Towanda 2762 +29-----

Dolo-lt gry/gry micro to fxln mhd sm mottled sl fos no por

Dolo-lt gry/gry micro to fxln mhd/dns sl fos no por

Dolo-AA

Dolo-AA

Sh-gry/dk gry/red

-----Fort Riley 2813 -22-----

Dolo-lt gry sm mottled micro to fxln sl fos no por

Dolo-AA

Dolo-AA

Dolo-lt gry sm mottled micro to fxln sl fos dns no por

Dolo-AA

Dolo-lt gry sm mottled micro to fxln sl fos mhd no por

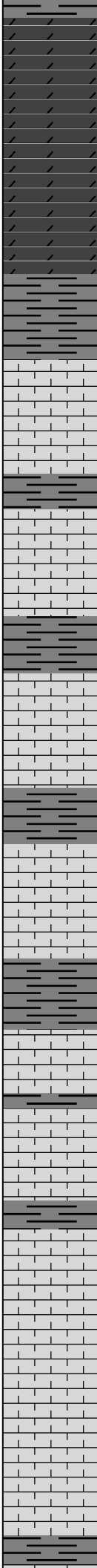
Sh-gry/dk gry/red

Sh-AA

0	ROP (min/ft)	10
0	Gamma (API)	150
6	Cal (in)	16

0	Total Gas (units)	150
0	C1 (units)	150
0	C2 (units)	150
0	C3 (units)	150
0	C4 (units)	150

2920  
2940  
2960  
2980  
3000  
3020  
3040  
3060  
3080  
3100  
3120



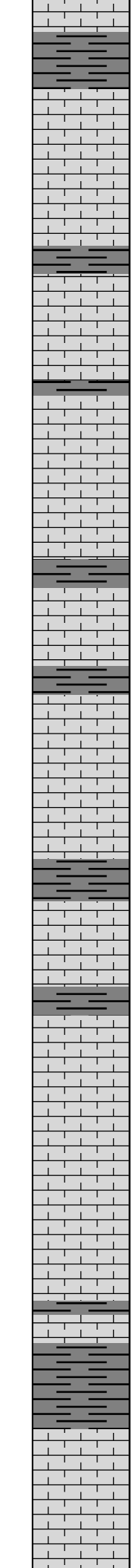
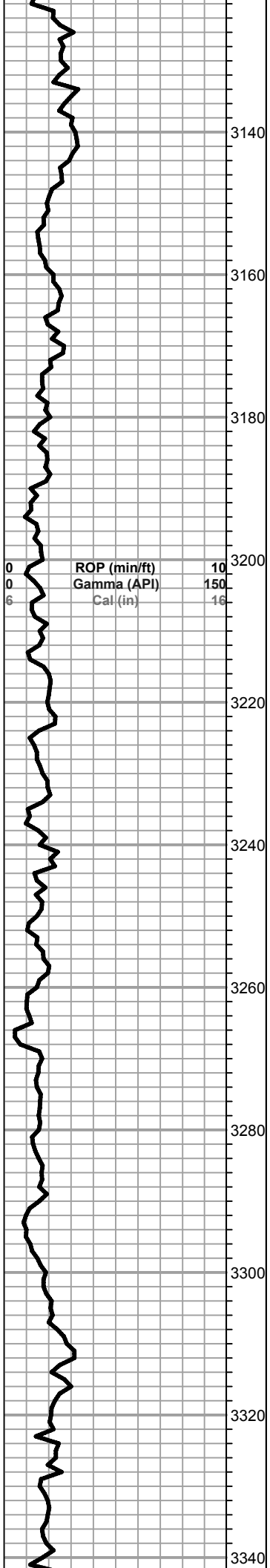
Dolo-lt gry/gry micro to fxln sl mottled mhd sl fos no por  
Dolo-AA  
Dolo-AA  
Sh-gry/dk gry/red  
Ls-wt/lit gry fxln mhd fos sl clky no por  
Sh-gry/dk gry/red  
Ls-wt/lit gry fxln mhd sl clky no por  
Sh-gry/dk gry  
Ls-wt/lit gry fxln soft/mhd fos sl clky fr interxln por nsfo  
Ls-wt/lit gry fxln mhd fos sl clky no por  
Sh-gry/dk gry  
Ls-wt fxln soft fos sl clky fr interxln por nsfo  
Ls-AA  
Sh-gry/dk gry  
Ls-wt fxln soft fos sl clky fr interxln por nsfo  
-----Cottonwood 3056 -265-----  
Ls-wt/lit gry fxln dns sl clky no por  
Ls-wt fxln soft fos sl clky fr interxln por nsfo  
Sh-gry/dk gry  
Ls-wt/lit gry fxln fos oom and ool gd interoom por nsfo  
Ls-wt/lit gry fxln soft/mhd fos oom and ool no por  
Ls-AA  
Ls-wt/lit gry fxln soft fos oom and ool gd interoom por nsfo  
Sh-gry/dk gry

ROP (min/ft) 10  
Gamma (API) 150  
Cal (in) 16

Total Gas (units) 150  
C1 (units) 150  
C2 (units) 150  
C3 (units) 150  
C4 (units) 150

0  
0  
6

0  
0  
0  
0



Ls-wt/lt gry fxln mhd/dns sl clkly no por

Sh-gry/dk gry

-----Neva 3134 -343-----

Ls-wt/lt gry fxln dns fos sl clkly no por

Ls-wt fxln soft/mdh fos clkly no por

Sh-gry/dk gry

Ls-gry sm mottled fxln mhd/dns sl fos no por

Sh-gry/dk gry

Ls-gry sm mottled fxln mhd/dns sl fos no por

Ls-AA

Sh-gry/dk gry

Ls-gry fxln mhd sl fos no por

Sh-gry/dk gry

Ls-lt gry fxln mhd/dns fos no por

Ls-AA

Ls-lt gry fxln mhd fos no por

Sh-gry/dk gry

-----Foraker 3247 -456-----

Ls-lt gry/crm fxln mhd fos no por

Sh-gry/dk gry

Ls-lt gry/crm fxln mhd/dns fos no por

Ls-AA

Ls-AA

Ls-lt gry/crm fxln mhd fos trc interxln por nsfo

Ls-lt gry/crm fxln mhd/dns fos no por

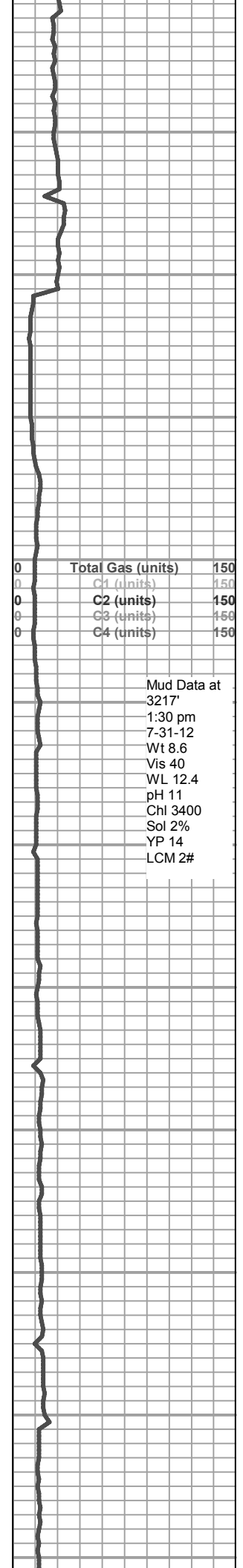
Sh-gry/dk gry

Ls-lt gry fxln dns sl fos no por

Sh-gry/dk gry

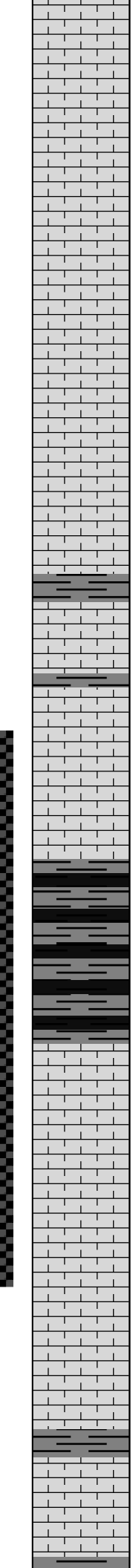
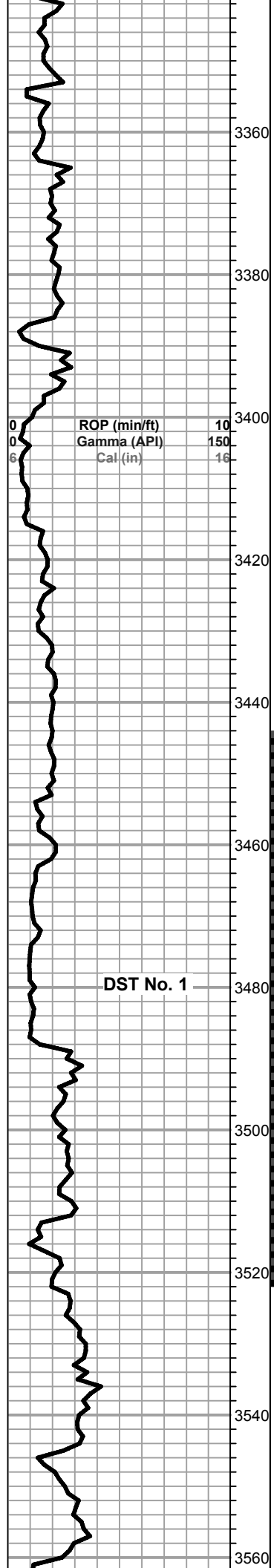
Ls-lt gry f/mxln mhd/dns fos no por

Ls-AA



0	Total Gas (units)	150
0	C1 (units)	150
0	C2 (units)	150
0	C3 (units)	150
0	C4 (units)	150

Mud Data at  
3217'  
1:30 pm  
7-31-12  
Wt 8.6  
Vis 40  
WL 12.4  
pH 11  
Chl 3400  
Sol 2%  
YP 14  
LCM 2#



Ls-tan/gry f/mxln mhd/dns sl fos no por

Ls-tan/gry f/mxln mhd fos no por

Ls-tan/gry f/mxln mhd/dns fos no por

Ls-AA

Ls-gry mottled brn f/mxln sm blkymhd fos no por

Ls-tan fxln mhd fos sl ooc and ool gd ooc por nsfo

Ls-tan/crm fxln mhd no por

Ls-tan fxln mhd fos sl ool and ooc gr ood por nsfo

Ls-AA

Sh-gry/dk gry

Ls-tan/gry f/mxln mhd fos no por

Sh-gry/dk gry

Ls-gry/brn mottled dk gry/mxln mhd highly fos no por

Ls-AA

Sh-gry/dk gry/mar

Sh-AA

Sh-AA

-----Stotler 3488 -697-----

Ls-tan/gry sm mottled gry and brn dns fos no por

Ls-AA

Ls-crm/tan fxln mhd/dns sl fos sl clkly no por

Ls-brn mottled gry and blk f/mxln soft/mhd sl fos fr interxln por nsfo

Ls-crm/tan fxln dns sl fos no por

Ls-tan fxln dns no por

Ls-AA

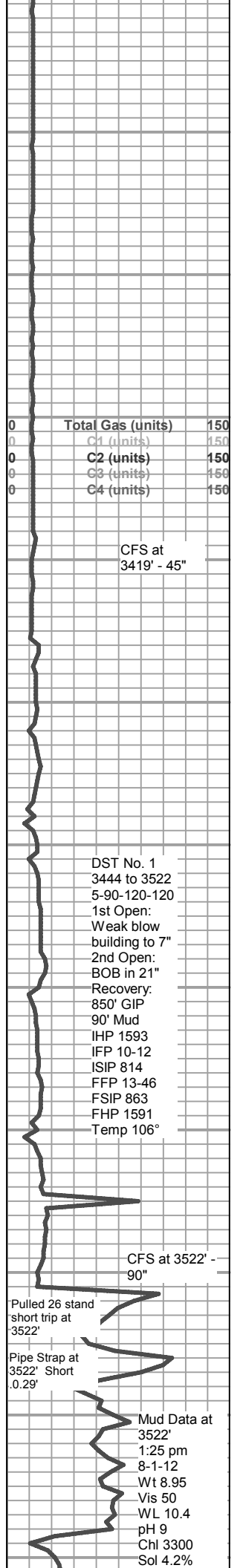
Ls-tan/gry fxln dns no por

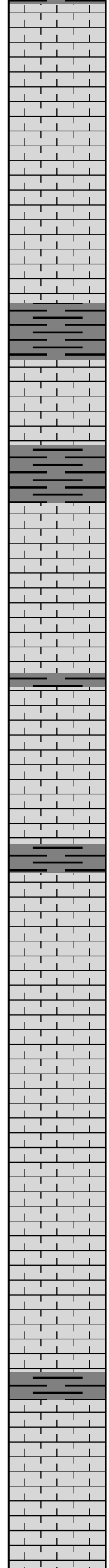
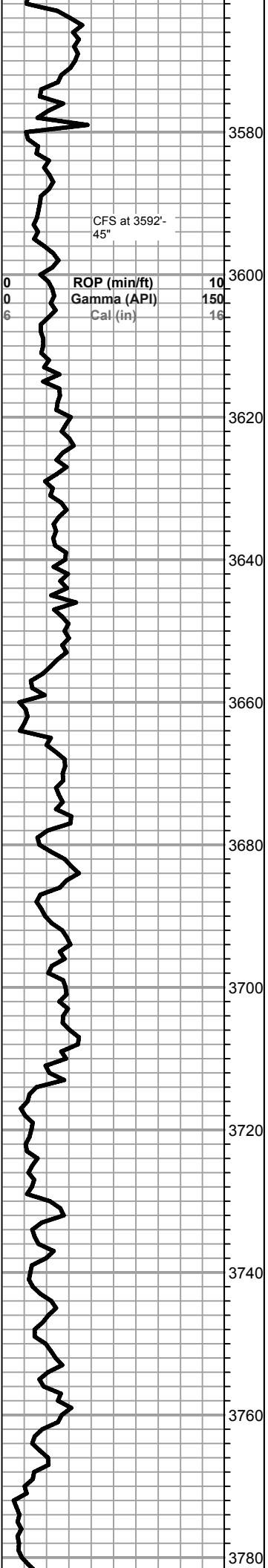
Sh-gry/dk gry

Ls-gry/tan fxln dns sl fos no por

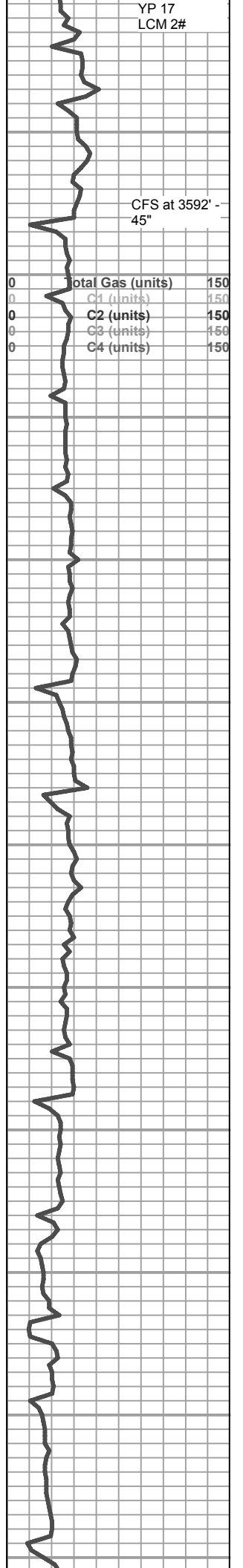
Ls-AA

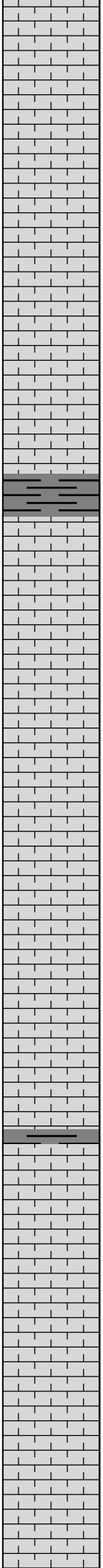
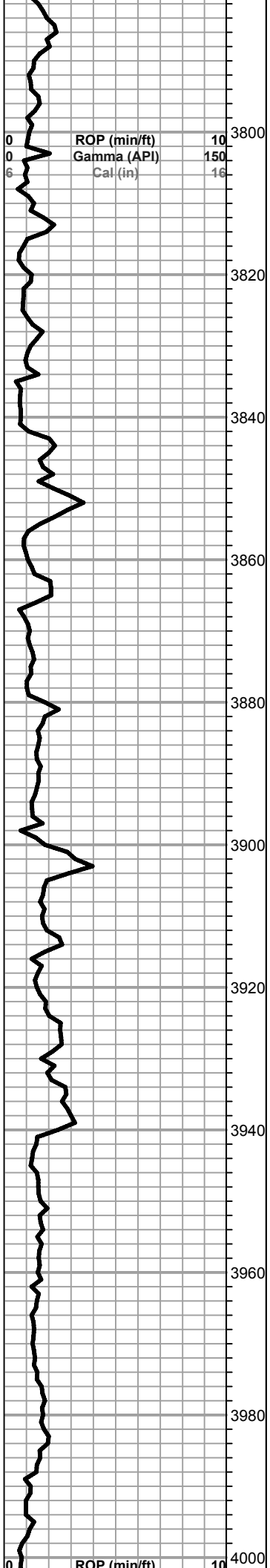
-----Tarkio 3562 -771-----



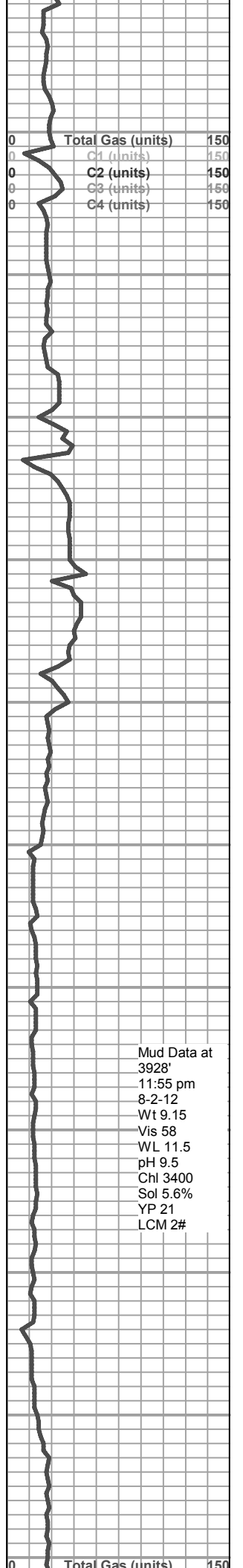


Ls-lt gry fxln dns no por  
 Ls-AA  
 Ls-crm/lt gry fxln mhd clkly no por sm Cht-tan fsh opac  
 Ls-tan/lt gry f/mxln mhd sl clkly no por sm Cht-AA  
 Ls-lt gry/tan fxln mhd/dns no por  
 Ls-lt gry/gry fxln dns no por  
 Sh-gry/dk gry  
 Ls-lt gry/gry fxln dns no por  
 Sh-gry/dk gry  
 Ls-lt gry/crm fxln dns no por  
 Ls-lt gry/crm f/mxln dns sl fos no por  
 Ls-AA sm Cht-lt gry fsh opac  
 Sh-gry/dk gry  
 Ls-lt gry/gry f/mxln soft/mhd sl fos fr interxln por nsfo  
 Ls-lt gry/gry fxln dns sl fos no por  
 Ls-AA  
 Sh-gry/dk gry  
 Ls-tan/ltgry fxln dns no por  
 Ls-tan/gry f/mxln mhd fos sl oom fr interxln/oom por nsfo  
 Ls-tan/gry fxln mhd/dns no por  
 Ls-crm/tan fxln dns no por  
 Ls-crm/tan/lt gry fxln soft/mhd sl fos clkly fr interxln por nsfo  
 Ls-AA  
 Ls-crm/tan fxln mhd sl clkly no por  
 Ls-lt gry f/mxln mhd fos no por  
 Ls-lt gry/gry f/mxln mhd fos no por  
 -----Topeka 3758 -967-----  
 Ls-lt gry/crm f/mxln mhd fos no por sm Cht-crm/lt gry fsh opac  
 Ls-lt gry f/mxln soft/mch fos sl clkly fr interxln por nsfo sm Cht-AA

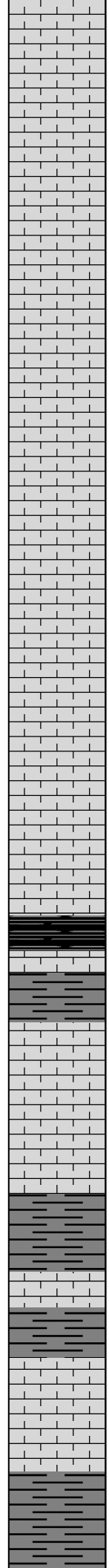
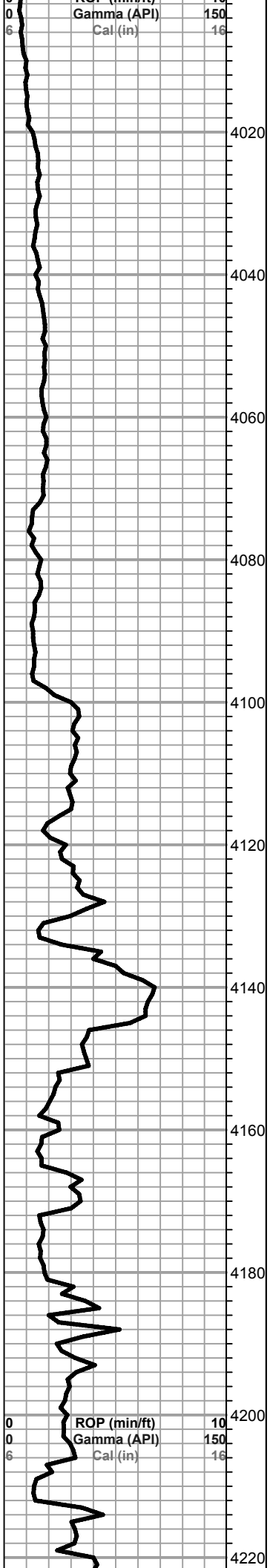




Ls-lt gry/crm fxln dns sl fos no por  
 Ls-lt gry/crm/tan f/mxln mhd sl fos sl clky no por  
 Ls-AA  
 Ls-tan/lt gry f/mxln mhd fos sl clky fr interxln por nsfo  
 Ls-AA  
 Ls-tan/lt gry f/mxln mhd fos sl clky trc interxln por nsfo  
 Ls-crm/lt gry f/mxln mhd sl fos sl clky no por  
 Ls-crm/lt gry f/mxln soft sl fos sl clky fr interxln por nsfo  
 sm Ls-wt fxln soft clky no por  
 Ls-crm/lt gry f/mxln mhd/dns sl fos no por  
 Sh-gry/dk gry  
 Ls-tan/gry fxln soft/mhd sl fos trc interxln por nsfo  
 sm Ls-wt fxln soft clky no por  
 Ls-tan/lt gry fxln mhd sl fos no por  
 Ls-tan/gry f/mxln mhd fos no por sm Ls-wt fxln soft clky no por  
 Ls- AA  
 Ls-tan/gry f/mxln mhd fos no por  
 Ls-AA  
 Ls-tan/lt gry f/mxln dns fos no por  
 Ls-tan/lt gry f/mxln mhd fos no por  
 Ls-AA  
 Ls-tan f/mxln mhd/dns sl fos no por  
 Ls-AA  
 -----LeCompton 3940 -1149-----  
 Ls-crm/lt gry fxln mhd no por and Ls-wt fxln soft clky no por  
 Ls-AA  
 Ls-crm/lt tan f/mxln mhd sl fos no por and Ls-wt fxln soft  
 clky no por  
 Ls-AA  
 Ls-crm/lt tan f/mxln mhd sl fos no por and Ls-wt fxln soft  
 clky no por  
 Ls-AA



Mud Data at  
 3928'  
 11:55 pm  
 8-2-12  
 Wt 9.15  
 Vis 58  
 WL 11.5  
 pH 9.5  
 Chi 3400  
 Sol 5.6%  
 YP 21  
 LCM 2#



LS-AA

Ls-crm/lt tan fxln soft/mhd sl fos sl clk no por and Ls-wt fxln soft clk no por

Ls-AA

Ls-AA

Ls-crm/lt tan fxln soft/mhd sl fos sl clk no por and Ls-wt fxln soft clk no por

Ls-AA

Ls-AA

Ls-crm/tan fxln mhd sl fos sl clk no por and Ls-wt fxln soft clk no por

Ls-AA

Ls-tan/lt gry f/mxl dns sl fos no por

Ls-AA

Ls-crm/wt fxln mhd sl clk trc interxln por nsfo

Ls-crm/tan f/mxl dns sl fos no por

-----Heebner 4130 -1339-----

Sh-blk carb

Ls-tan/brn f/mxl dns sl fos no por

Sh-gry/dk gry

-----Toronto 4145 -1354-----

Ls-lt gry/tan f/mxl dns sl fos no por

Ls-lt gry/tan f/mxl soft/mhd sl fos fr interxln por nsfo

Ls-AA

-----Douglas 4169 -1378-----

Sh-gry/dk gry

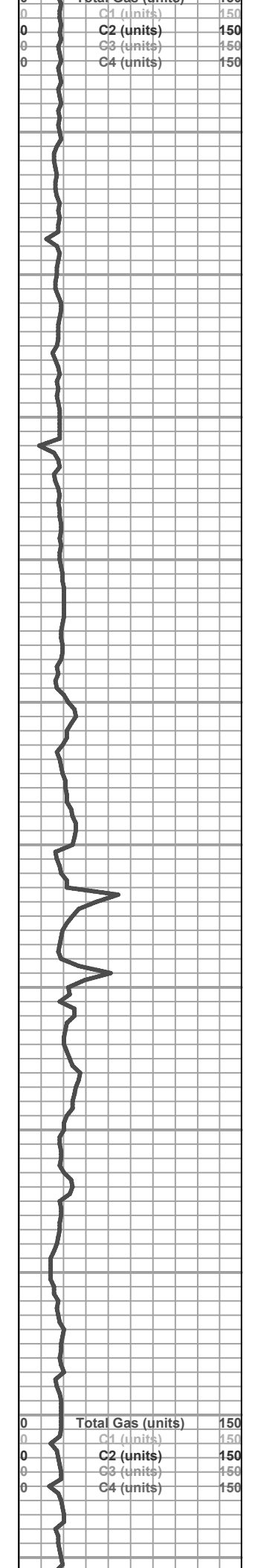
Ls-lt gry/tan fxln mhd sl fos no por

Sh-gry/dk gry

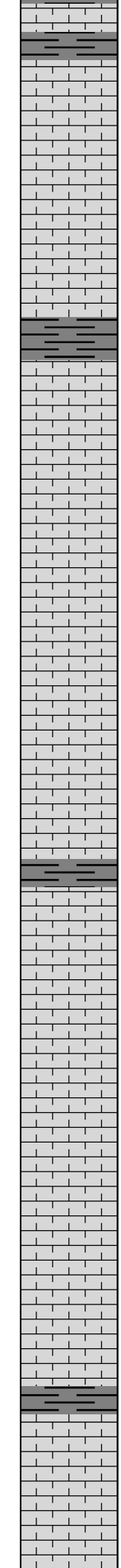
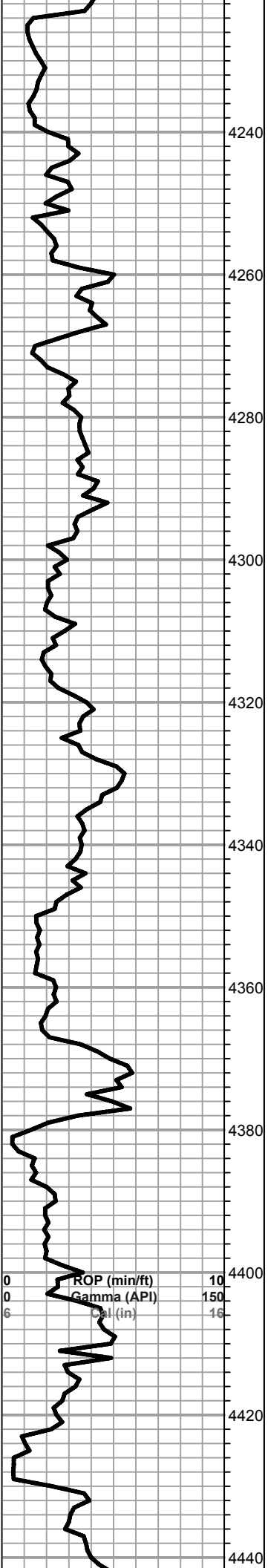
Ls-tan/crm micro to fxln dns no por sm Cht-wt fsh and weat

Ls-AA and Cht-AA

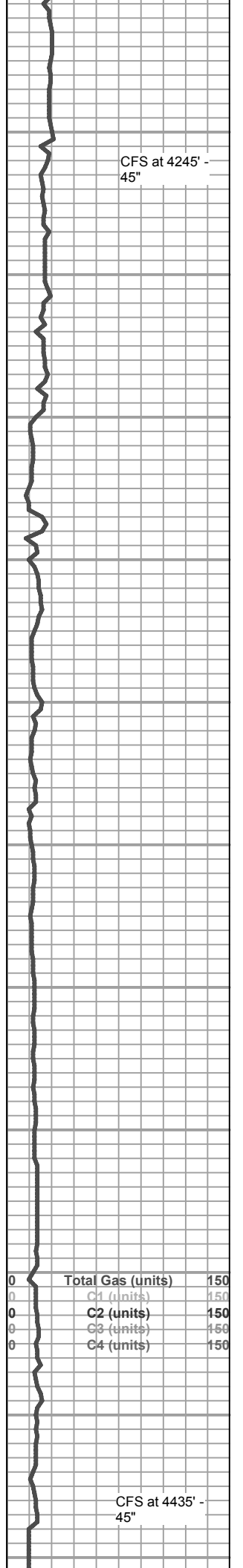
Sh-gry/dk gry

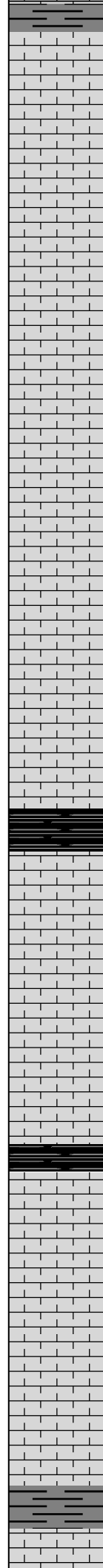
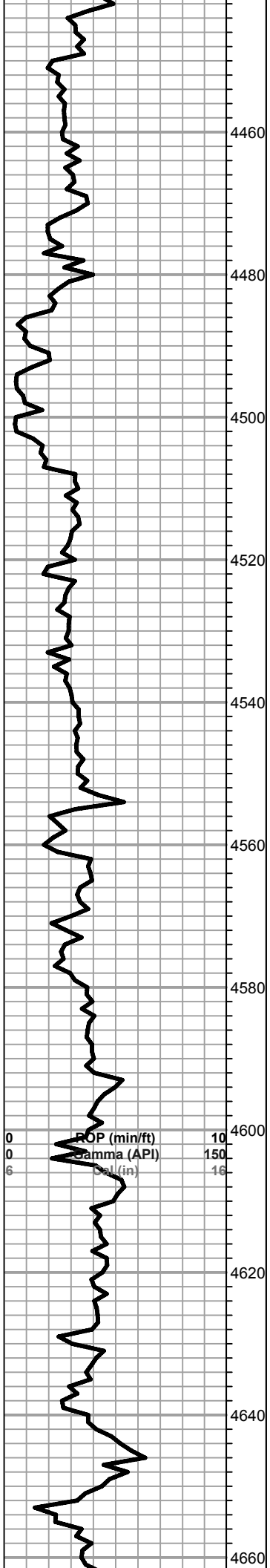






-----Lansing 4219 -1420-----  
 Ls-gry/brn fxln dns sl fos no por  
 -----Lansing 4228 -1437-----  
 Ls-crm f/mxln soft/mhd trc interxln por nsfo and Ls-wt fxln soft clky no por  
 Ls-crm/lt tan fxln mhd sl clky no por sm Cht-tan/lt gry fsh opac  
 Ls-AA  
 Ls-crm/lt tan fxln mhd sl clky no por sm Cht-tan/lt gry fsh opac  
 Ls-crm/lt tan micro to fxln dns no por  
 Sh-gry/dkgry  
 Ls-lt gry/tan micro to fxln dns no por  
 Ls-AA  
 Ls-lt gry/tan/gry fxln dns no por  
 Ls-AA  
 Ls-tan/lt gry fxln dns no por sm Cht-tan fsh opac  
 Ls-gry/tan/brn f/mxln dns no por sm Cht-AA  
 Ls-gry/tan f/mxln dns no por sm Cht-wt fsh opac  
 Ls-gry f/mxln dns no por  
 Sh-gry/dk gry  
 Ls-gry/brn f/mxln mhd sl fos fr interxln por nsfo  
 Ls-AA  
 Ls-tan m/cxln dns sl fos no por  
 Ls-AA sm Cht-wt fsh opac  
 Ls-tan/lt gry mxln soft sl fos fr interxln por nsfo  
 Ls-tan/lt gry f/mxln mhd/dns sl fos no por  
 Ls-AA  
 Ls-tan/lt gry fxln dns sl fos nsfo  
 Sh-gry/dk gry  
 Ls-tan f/mxln fos sl ool gd ooc por nsfo  
 Ls-crm/lt gry fxln dns no por  
 Ls-AA





Sh-gry/dk gry

Ls-crm/tan fxln dns no por

Ls-crm/tan/lt gry fxln mhd/dns no por

Ls-AA

Ls-crm/tan fxln dns sl fos no por sm Ls-wt fxln soft clky no por

Ls-crm/tan fxln dns sl fos no por sm Ls-wt fxln soft clky no por

Ls-tan fxln mhd fos sl ool and oom sl ooc fr inter oom por  
pr ooc por

Ls-AA

Ls-AA

Ls-tan/lt brn fxln dns no por

Ls-AA

Ls-tan/lt gry/lt brn fxln dns no por

Ls-AA

Ls-tan/lt gry fxln dns no por

-----**Stark 4555 -1764**-----

Sh-blk carb

Ls-crm/lt gry fxln mhd no por

Ls-crm fxln dns no por sm Ls-wt fxln soft clky no por

Ls-crrm/tan fxln mhs sl clky no por sm Cht-wt/gry wt/gry fsh opac

Ls-tan fxln dns no por sm Cht-AA

Ls-tan/gry/brn micro to fxln dns sl fos no por sm Cht-lt gry/gry

Ls-tan/gry fxln mhd sl fos no por

-----**Hushpuckney 4603 -1819**-----

Sh-blk carb

Ls-tan/gry fxln dns sl fos no por

Ls-tan/brn micro to fxln dns no por sm Cht-lt gry/gry fsh opac

Ls-tan/brn micro to fxln dns no por sm Cht-gry/brn fsh opac

Ls-AA

Ls-tan micro to fxln dns no por

Sh-gry/dk gry

Ls-tan/gry f/mxln mhd fos sl ool and oom no por

Coming out of hole at 4435' at 1 pm on 8-3-12 to repair cooler on torque converter

Drilling again at 11:15 pmon 8-3-12

Mud Data at 4435' 11:45 pm 8-3-12  
Wt 9.3  
Vis 48  
WL 8.8  
pH 10.5  
Chl 2000  
Sol 7%  
YP 17  
LCM 3#

0	Total Gas (units)	150
0	C1 (units)	150
0	C2 (units)	150
0	C3 (units)	150
0	C4 (units)	150

Mud Data at 4652' 11:30 pm 8-4-12  
Wt 9.25

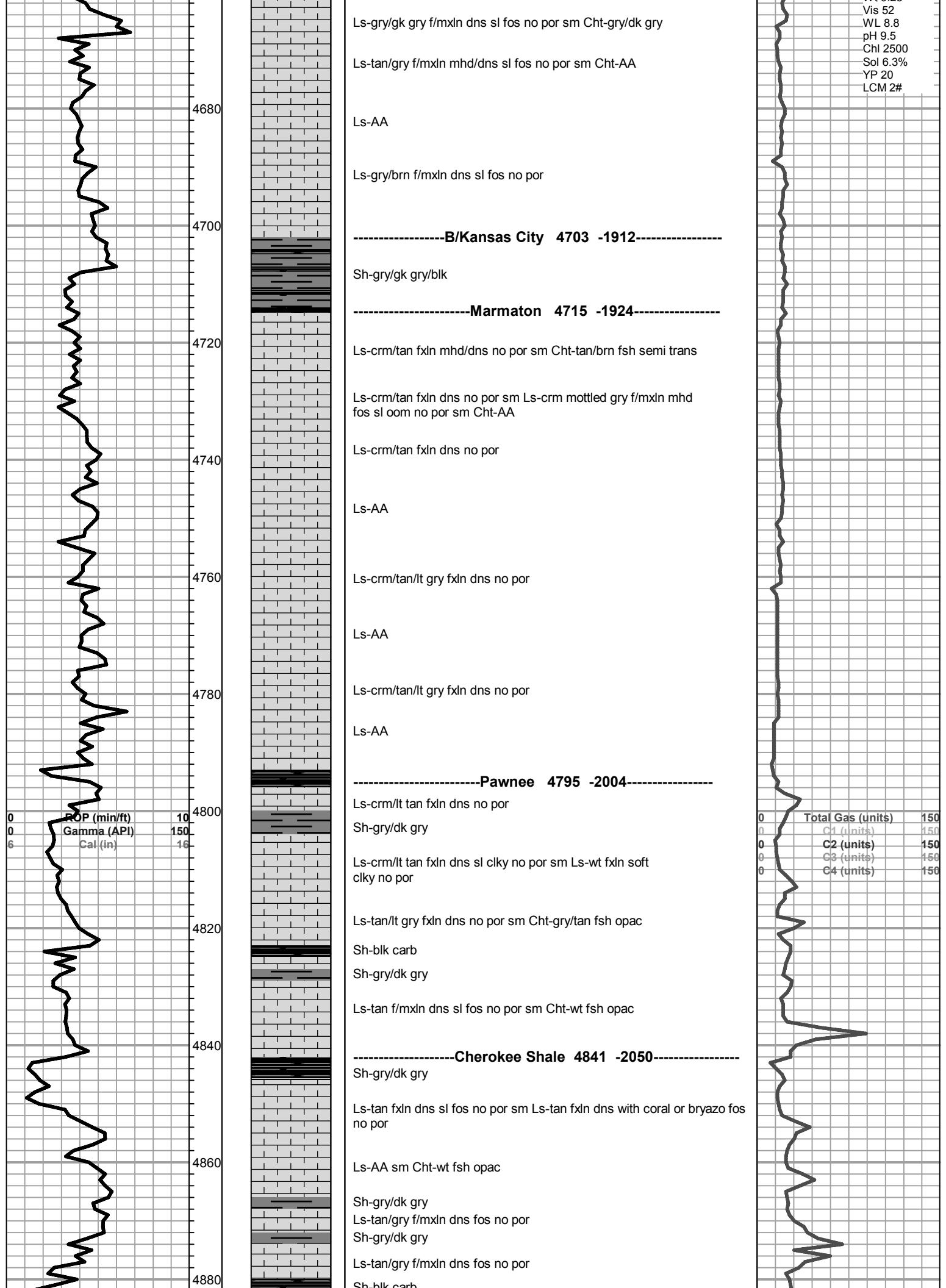
Vis 52  
 WL 8.8  
 pH 9.5  
 Chl 2500  
 Sol 6.3%  
 YP 20  
 LCM 2#

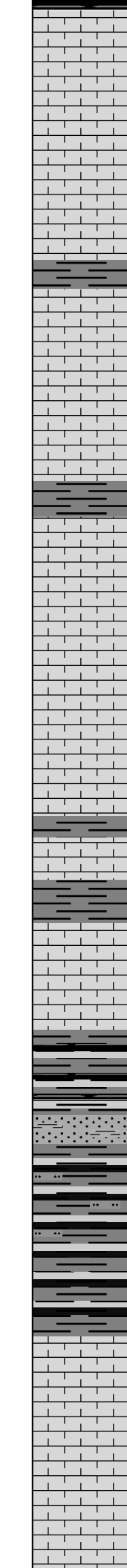
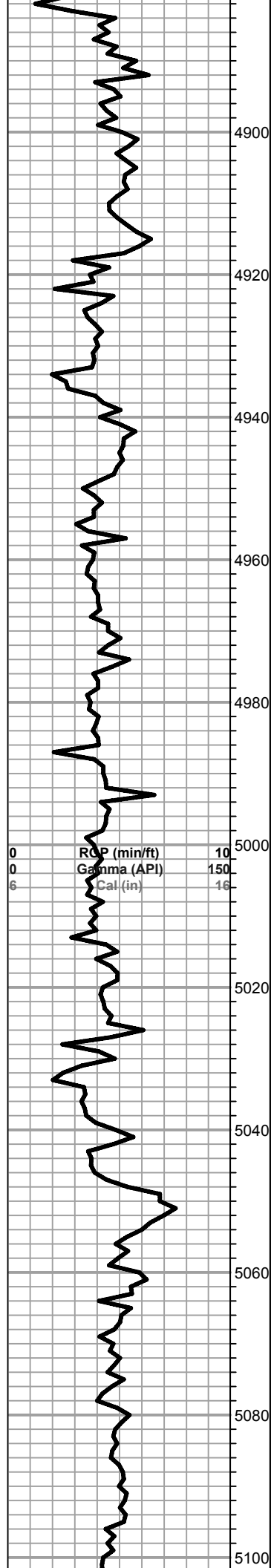
4680  
 4700  
 4720  
 4740  
 4760  
 4780  
 4800  
 4820  
 4840  
 4860  
 4880

Ls-gry/gk gry f/mxln dns sl fos no por sm Cht-gry/dk gry  
 Ls-tan/gry f/mxln mhd/dns sl fos no por sm Cht-AA  
 Ls-AA  
 Ls-gry/brn f/mxln dns sl fos no por  
 -----**B/Kansas City 4703 -1912**-----  
 Sh-gry/gk gry/blk  
 -----**Marmaton 4715 -1924**-----  
 Ls-crm/tan fxln mhd/dns no por sm Cht-tan/brn fsh semi trans  
 Ls-crm/tan fxln dns no por sm Ls-crm mottled gry f/mxln mhd  
 fos sl oom no por sm Cht-AA  
 Ls-crm/tan fxln dns no por  
 Ls-AA  
 Ls-crm/tan/lt gry fxln dns no por  
 Ls-AA  
 Ls-crm/tan/lt gry fxln dns no por  
 Ls-AA  
 -----**Pawnee 4795 -2004**-----  
 Ls-crm/lt tan fxln dns no por  
 Sh-gry/dk gry  
 Ls-crm/lt tan fxln dns sl clk no por sm Ls-wt fxln soft  
 clk no por  
 Ls-tan/lt gry fxln dns no por sm Cht-gry/tan fsh opac  
 Sh-blk carb  
 Sh-gry/dk gry  
 Ls-tan f/mxln dns sl fos no por sm Cht-wt fsh opac  
 -----**Cherokee Shale 4841 -2050**-----  
 Sh-gry/dk gry  
 Ls-tan fxln dns sl fos no por sm Ls-tan fxln dns with coral or bryazo fos  
 no por  
 Ls-AA sm Cht-wt fsh opac  
 Sh-gry/dk gry  
 Ls-tan/gry f/mxln dns fos no por  
 Sh-gry/dk gry  
 Ls-tan/gry f/mxln dns fos no por  
 Sh-blk carb

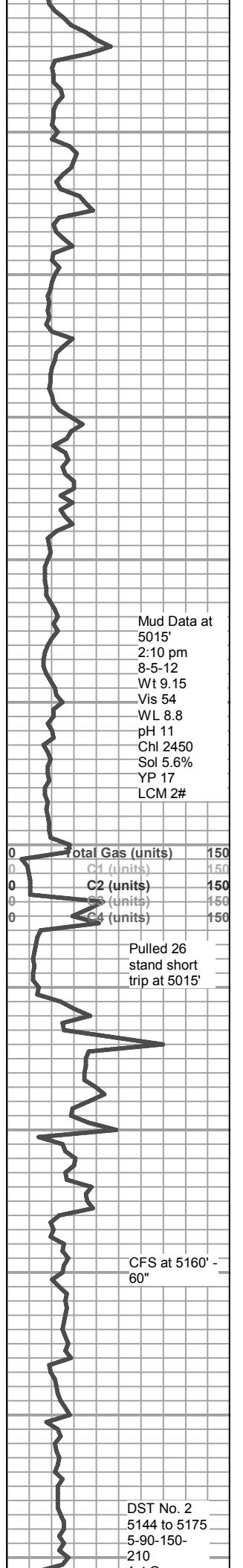
0 ROP (min/ft) 10  
 0 Gamma (API) 150  
 6 Cal (in) 16

0 Total Gas (units) 150  
 0 C1 (units) 150  
 0 C2 (units) 150  
 0 C3 (units) 150  
 0 C4 (units) 150





Sh-blk carb  
 Ls-tan/gry/brn f/mxln dns fos no por sm Ls-tan fxln mhd  
 fos ool and oom no por  
 Ls-crm/tan/gry f/mxln dns sl fos no por sm Ls-tan/brn fxln  
 mhd fos ool and oom no por  
 Ls-tan/gry fxln dns no por  
 Ls-AA  
 Sh-gry/dk gry  
 Ls-gry fxln dns no por  
 Ls-lt gry/tan fxln mhd no por sm Cht-gry/wt/tan  
 Ls-lt gry/tan fxln dns no por sm Cht-AA  
 Sh-gry/dk gry  
 Ls-tan/gry fxln dns no por sm Cht-tan/brn/gry wt  
 Ls-AA  
 Ls-brn fxln dns no por  
 Ls-AA  
 Sh-gry/dk gry  
 Ls-gry/brn f/mxln dns no por  
 Sh-gry/dk gry  
 Ls-gry/brn f/mxln dns no por  
 Ls-AA  
 -----Morrow Shale 5026 -2235-----  
 Sh-gry/dk gry/blk/grn  
 Ss-gry/brn fgrn tite cement to sl fri gils cal cement nsfo or gas  
 Sh-gry/dk gry/mar/sm Silt-grn  
 Sh-AA  
 -----Mississippi 5070 -2279-----  
 Ls-lt gry/crm grn mhd/dns no por  
 Ls-AA  
 Ls-lt gry/crm fxln to gran dns no por  
 Ls-AA



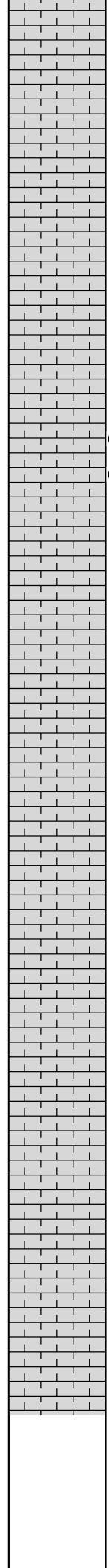
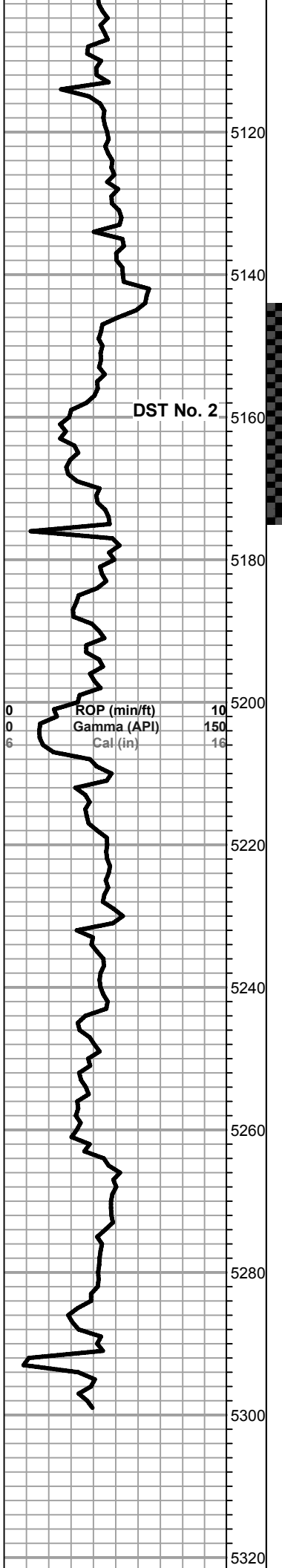
Mud Data at  
 5015'  
 2:10 pm  
 8-5-12  
 Wt 9.15  
 Vis 54  
 WL 8.8  
 pH 11  
 Chl 2450  
 Sol 5.6%  
 YP 17  
 LCM 2#

0	Total Gas (units)	150
0	C1 (units)	150
0	C2 (units)	150
0	C3 (units)	150
0	C4 (units)	150

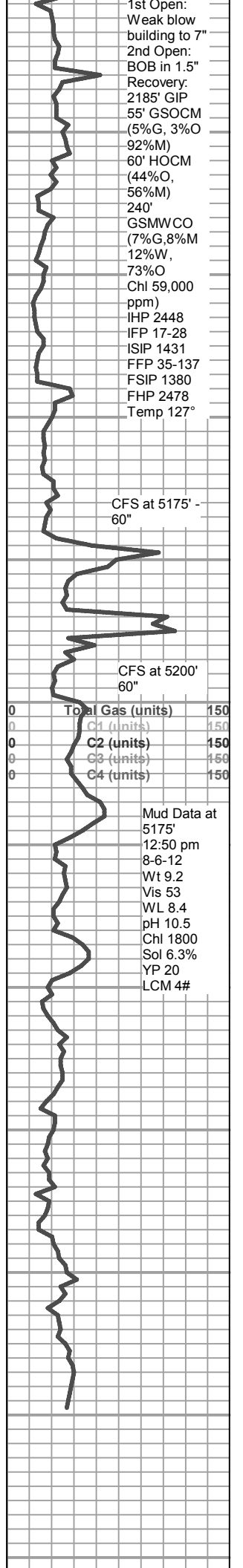
Pulled 26  
 stand short  
 trip at 5015'

CFS at 5160' -  
 60"

DST No. 2  
 5144 to 5175  
 5-90-150-  
 210



Ls-lt gry/crm fgran dns no por  
 Ls-AA  
 Ls-lt gry/crm fxl to sl gran dns nopor  
 Ls-lt gry/crm gran dns no por  
 Ls-lt gry/crm/lt tan fxl to gran dns no por  
 Ls-crm f/mxln mhd/dns fos sl ool no por  
 Ls-crm f/mxln mhd fos ool no por nsfo sm Ls-crm fxl to gran dns no por  
 ool gr interool por fsfo on brk gd cut fr fluor faint odor  
 Ls-crm/lt tan fxl mhd mhd/dns fos ool sl clky no por  
 Ls-crm/tan fxl to gran fos sl ool mhd/dns no por  
 Ls-crm/tan f/mxln mhd/dns fos no por  
 Ls-crm/tan f/mxln mhd sl fos no por sm Cht-wt/lt org fsh opac  
 Ls-crm/tan f/mxln mhd/dns fos sl oom no por  
 sm Cht-wt/gry wt/tan/lt org/org fsh opac  
 Ls-crm/tan f/mxln mhd fos sl ool fr interool por nsfo  
 Ls-t  
 crmtan f/mxln mhd/dns fos no por sm Cht-wt/lt gry fsh opac  
 Ls-tan/lt gry f/mxln mhd/dns fos sl clky no por sm Cht-AA  
 Ls-AA sm Cht-AA  
 Ls-tan/lt gry f/mxln dns fos sl clky no por sm Cht-wt fsh opac  
 Ls-crm/tan f/mxln mhd fos sl clky no por sm Cht-AA  
 Ls-crm/lt tan fxl mhd sl fos sl clky no por sm Cht-wt fsh opac  
 Ls-crm/lt tan f/mxln mhd sl fos sl ool no por sm Cht-AA  
 Ls-crm/lt tan f/mxln mhd sl fos sl ool no por sm Cht-wt fsh opac  
 Ls-AA sm Cht-AA  
 Ls-crm/tan/lt gry f/mxln mhd fos sl clky sl ool no por sm Cht-AA  
 Ls-crm/tan/lt gry mxln soft/mhd fos clky sl ool fr interxln por  
 Ls-crm/tan f/mxln mhd/dns fos sl clky no por sm Cht-AA  
 -----RTD 5300 -2509-----



**Finished Drilling at 2:44 pm on 8-7-12. Cir for Log - 90"**

**Finished Logging at**

5340

5360

5380

5400

5420

5440

5460

5480

0	ROP (min/ft)	10
0	Gamma (API)	150
6	Cal (in)	16

0	Total Gas (units)	150
0	C1 (units)	150
0	C2 (units)	150
0	C3 (units)	150
0	C4 (units)	150