

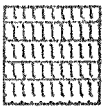
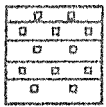
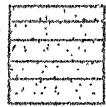

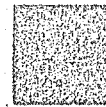
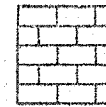
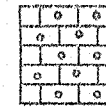
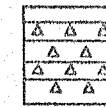

FEET	HOURS
364	-
4522	-
130	-
4920.41'	
4924.06'	
3 65'L	
3/4"	
1"	
LOS ANGELES	
3 H	
dstr 1	

DRILL STEM TESTS

No.	Interval	RP/Time	SP/Time	FP/Time	FSD/Time	SP-TRM	REMARKS
1	4814-4898	19-20 #	38 #	20-20 #	30 #	2376 #	5' mud
	76'	30"	30"	30"	30"	2329 #	

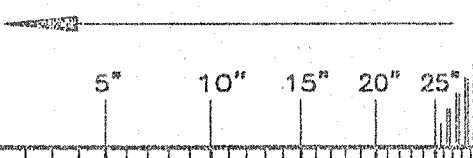
REMARKS AND COMMENTS: Due to poor zone development, negative dstr. Negative E-log results the 1-16A Reservoir was declared dry and abandoned 8-03-12

Jay K. M. Reed

- 
Anhydrite
- 
Salt
- 
Sandstone
- 
Shale
- 
Carb sh
- 
Limestone
- 
Ool. Lime
- 
Chert
- 
Dolomite

SCALE " = 100'

DRILLING TIME IN MINUTES PER FOOT
Rate of Penetration Increases



LITHOLOGY

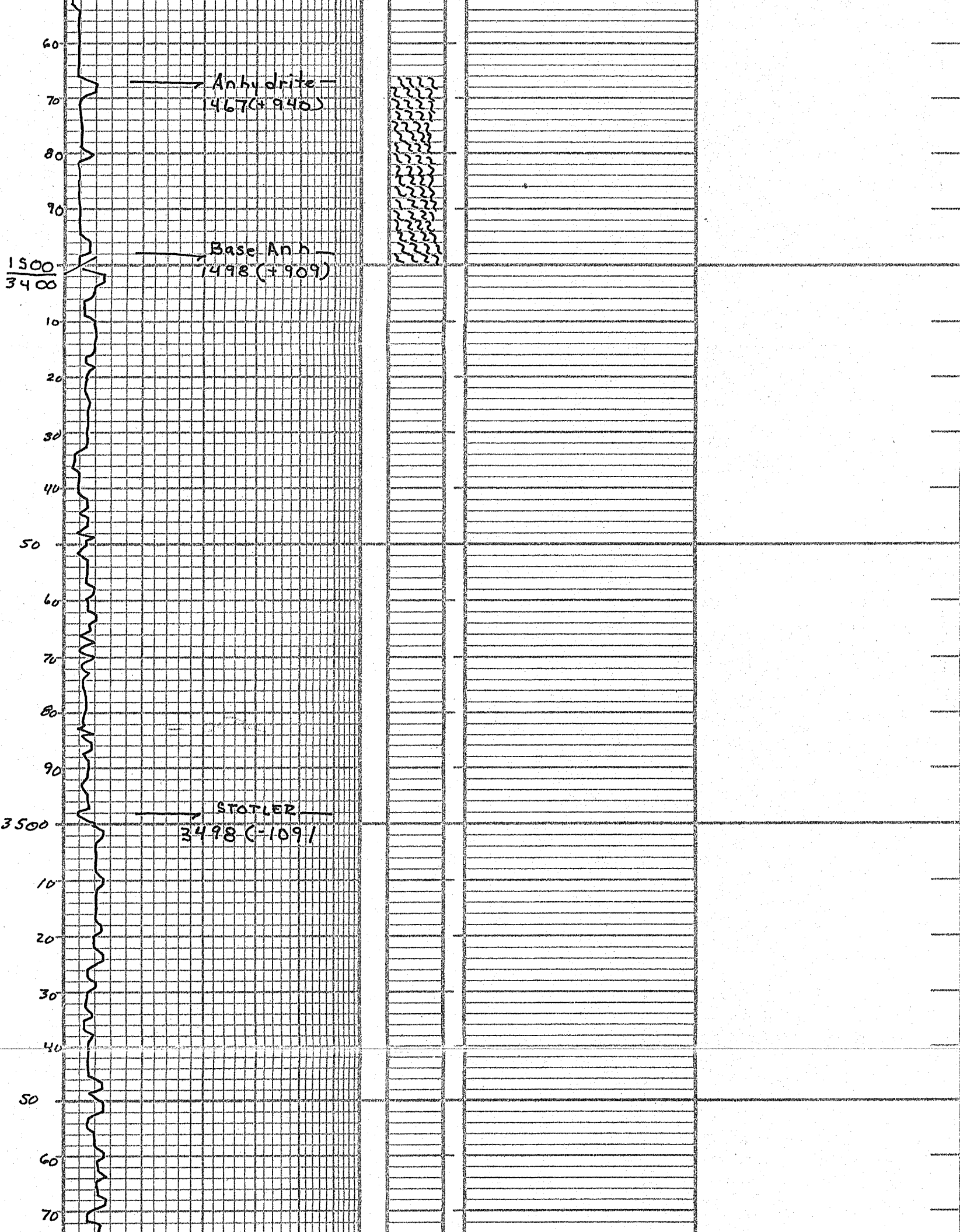
SAMPLE DESCRIPTIONS

REMARKS

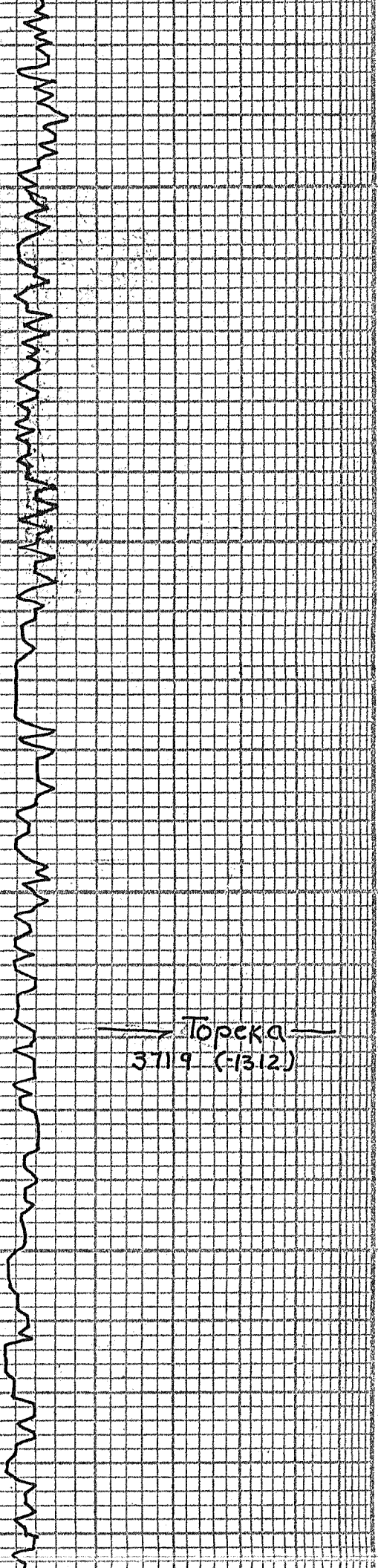
DEPTH

1450

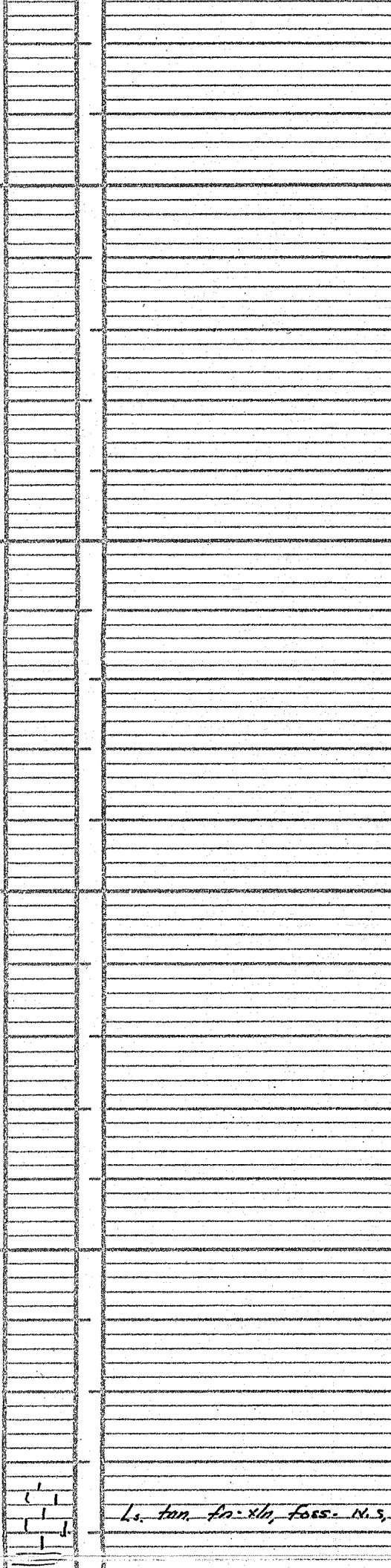
8011 501



80
90
3600
10
20
30
40
50
60
70
80
90
3700
10
20
30
40
50
60
70
80
90



→ Topeka ←
3719 (-1312)



Ls. tan. An. 1/10, Foss. N.S.

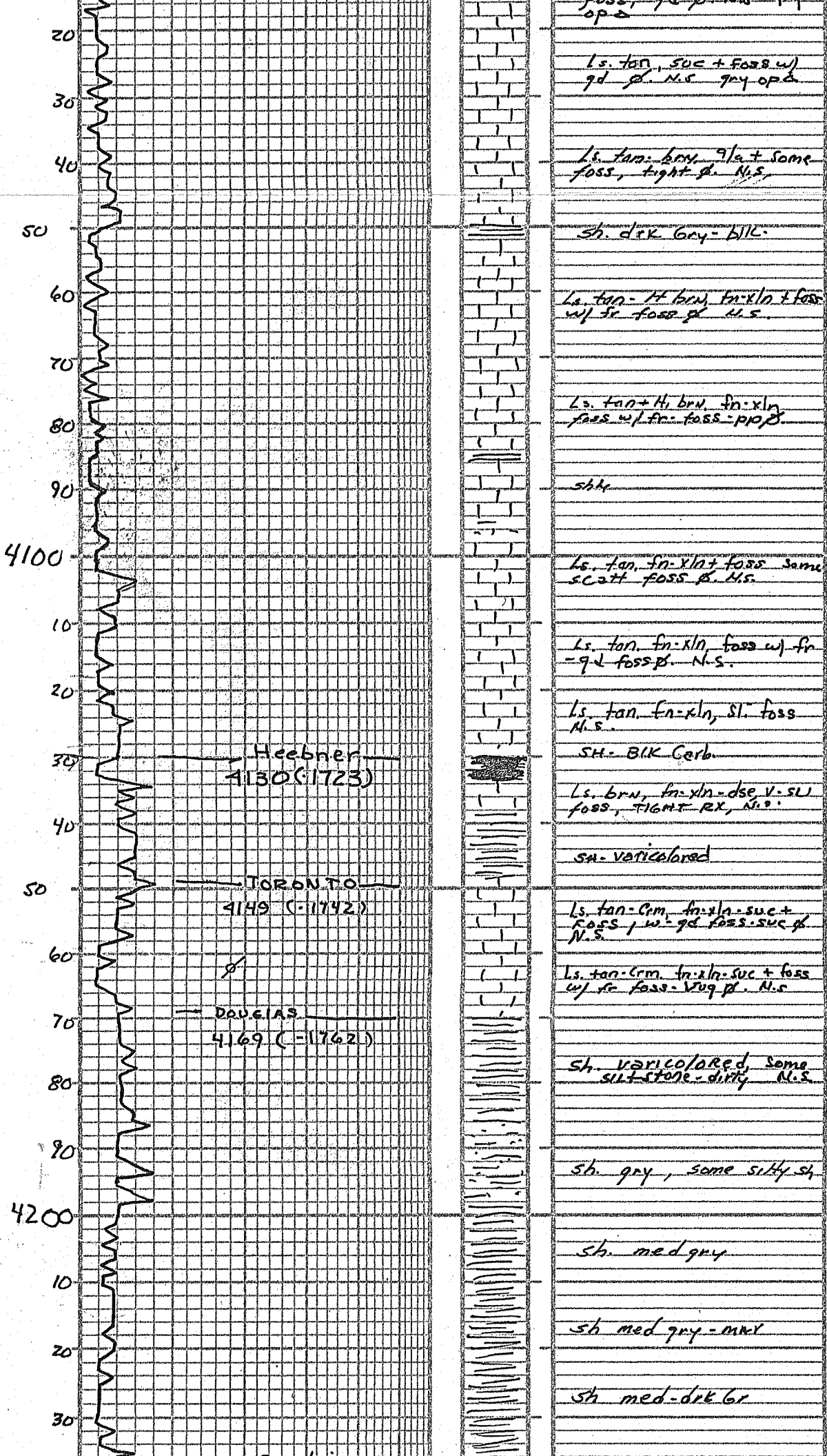
3800
10
20
30
40
50
60
70
80
90
3900
10
20
30
40
50
60
70
80
90
4000
10

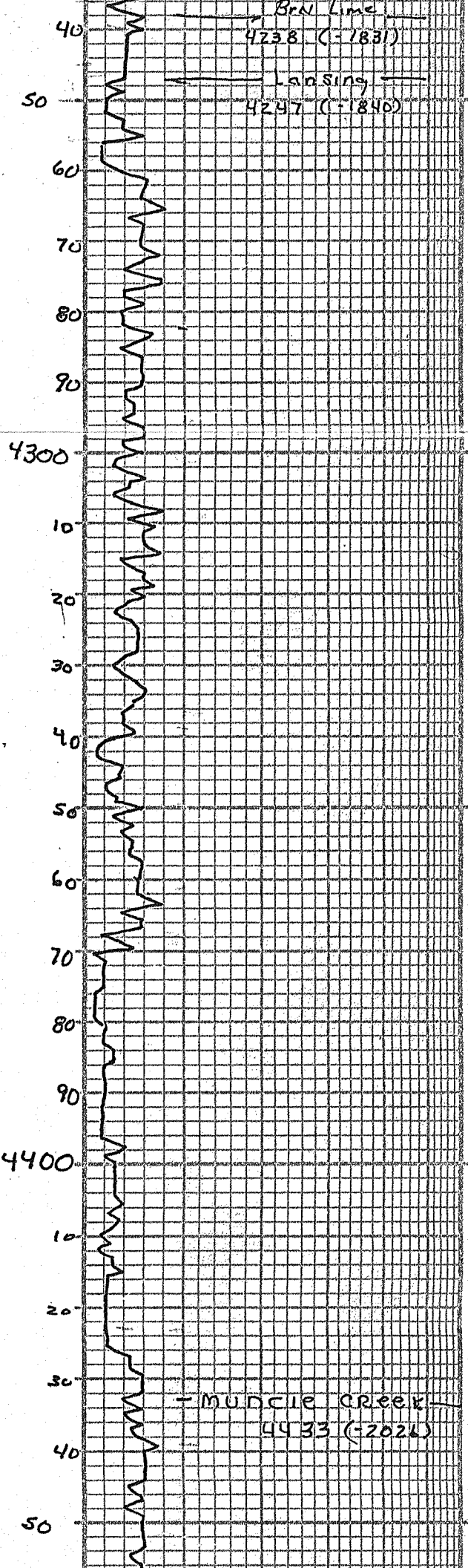
SAMPLES START 3800



sh. gray-mar
ls. tan. Gray, fr-xln, foss
scatt foss p. N.S.
ls. tan. Gray, v. foss
w/ qd foss p. N.S.
ls. tan. Gray, foss w/ qd
foss p. N.S.
ls. tan. Gray, fr-xln + foss
qd p. N.S.
ls. tan. brn, fr-xln, foss
w/ qd foss p. N.S.
ls. tan. Gray, granular-
sdy. N.S.
ls. tan. Gray, foss-sdy N.S.
sh. blk-dk grey
sdy.
ls. tan. brn, fr-xln, foss
pr. p. N.S.
ls. tan, fr-xln, -suc, foss
w/ qd -suc -foss p. N.S.
ls. tan. suc -foss w/ fr
suc -foss p. N.S.
ls. tan - brn, suc w/
fr - gd - suc - vug p. N.S.
Some 2.
sh. gray-mar
sh gray-mar
ls. tan, fr-xln w/ qd
op fresh 2
ls. tan. fr-xln foss. pry. 2
sh. blk. Gray-mar
ls. tan, fr-xln -foss -suc +
foss qd of N.S. qm

x





BRN Line
4238 (-1831)

LANSING
4297 (-1840)

4300

Ls. brn, dse, sl. foss, tight
R₂, NV₂ N.S.

sh. gry-mar

Ls. Crm-tan, fn-xln-foss
w/ fr foss-PP₂ N.S.

Ls. Crm-tan, sl. foss w/
PP₂ foss-PP₂ TIGHT RX
N.S.

sh. gry-mar

Ls. tan-gry, SLI FOSS w/
PP₂ N.S.

Ls. Crm. gry, fn-xln + sl.
foss, PP₂ N.S.

SH. GRN-MAR

Ls. Lt. tan - Gry, fn-xln -
V. sl. ool, mostly tight
w/ PP₂ tr₂ N.S.

shly, gry-mar

Ls. Lt. tan + Gry, fn-xln
dse, tr-xln-trac₂
N.S.

SH. GRYS

Ls. Lt. tan + brn, few pc's
sl. ool, some sl. foss
lots of tight-dse RX
N.S.

Ls. Lt. tan, dse, tr₂
PP₂ N.S.

SH. GRYS-MAR

Ls. tan, ooc, w/ qd small
ooc₂ N.S.

Ls. q/a tan, ooc w/ qd ooc₂
N.S.

4400

Ls. tan - Lt. brn, ooc w/
qd ooc₂ N.S.

Ls. q/a - qd ooc₂ N.S.

20
10
K

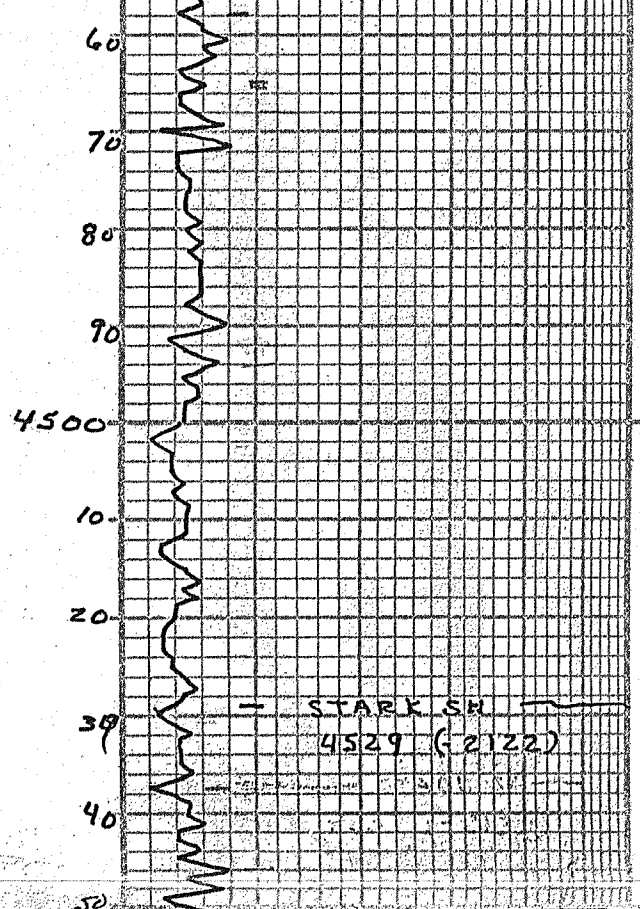
sh. blk carb

Ls. tan, dse, N.S.

sh. gry's.

MUNCIE CREEK
4433 (-2026)

Ls. tan-Crm. fn-xln
-dse, NV₂ N.S.



ls. tan - gray - fn - xln - tight
scatt qtz op Δ - N.S.

sh. gray's - marl

ls. tan - fn - xln - foss w/
foss - var qtz - N.S.

ls. tan - fn - xln + foss w/
scatt - foss - var qtz - N.S.

ls. tan - fn - xln + sh - foss
poor - N.S. + gray sh

sh. gray's

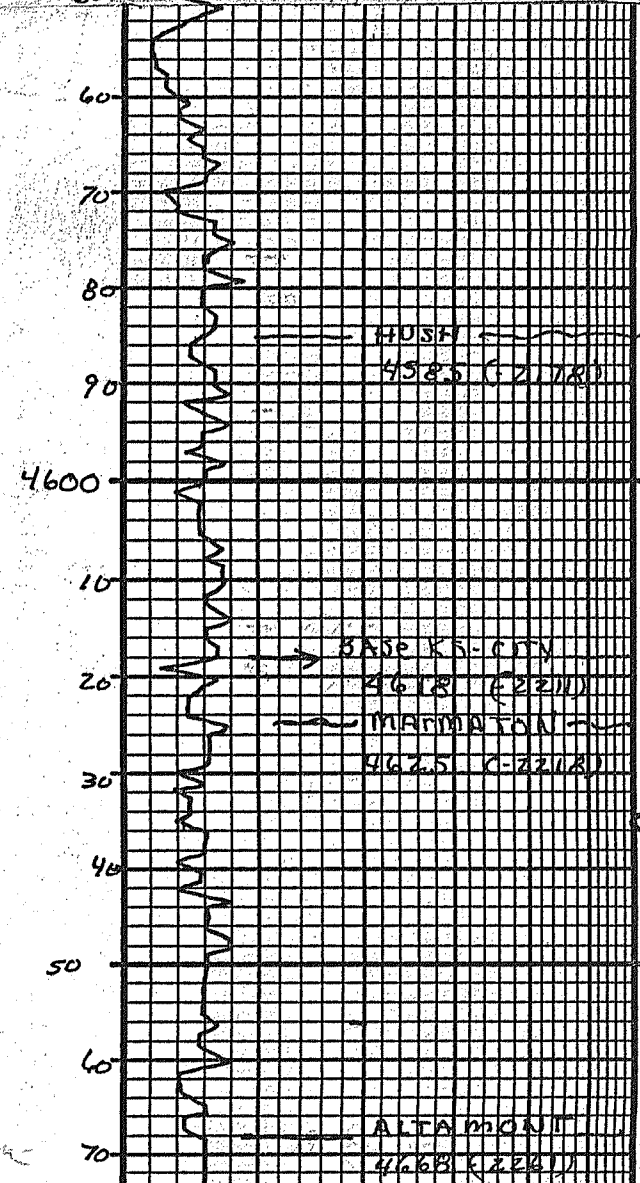
ls. Crm - tan - ool - foss w/
gd - intercal - foss - N.S.
chky

ls. Crm - tan - fn - xln -
slt - foss, v. slt ool, tight
fx, N.S. + Δ - slt chky

SH, BIK - DRK - Gray

sh. gray's

ls. tan - gray - fn - xln, slt
foss - ool - same qtz -
N.S. - scatt -



ls. tan - gray - fn - xln - slt
- v. slt ool, poor - scatt
gray op foss Δ - N.S.

ls. tan - gray - slt - foss -
N.S.

SH - BIK carb

ls. tan - gray - fn - xln + foss
w/ scatt - foss - same
Δ - N.S.

ls. qtz - becoming v. xty

ls. tan - fn - xln - tight, N.V.
N.S.

sh. blk - gray

ls. Crm - wh - gray - fn - xln +
slt - foss - chky - N.S. 3rd
floor

ls. tan - fn - xln, N.S. lots
of foss Δ.

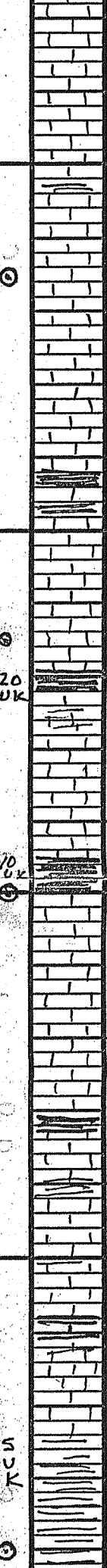
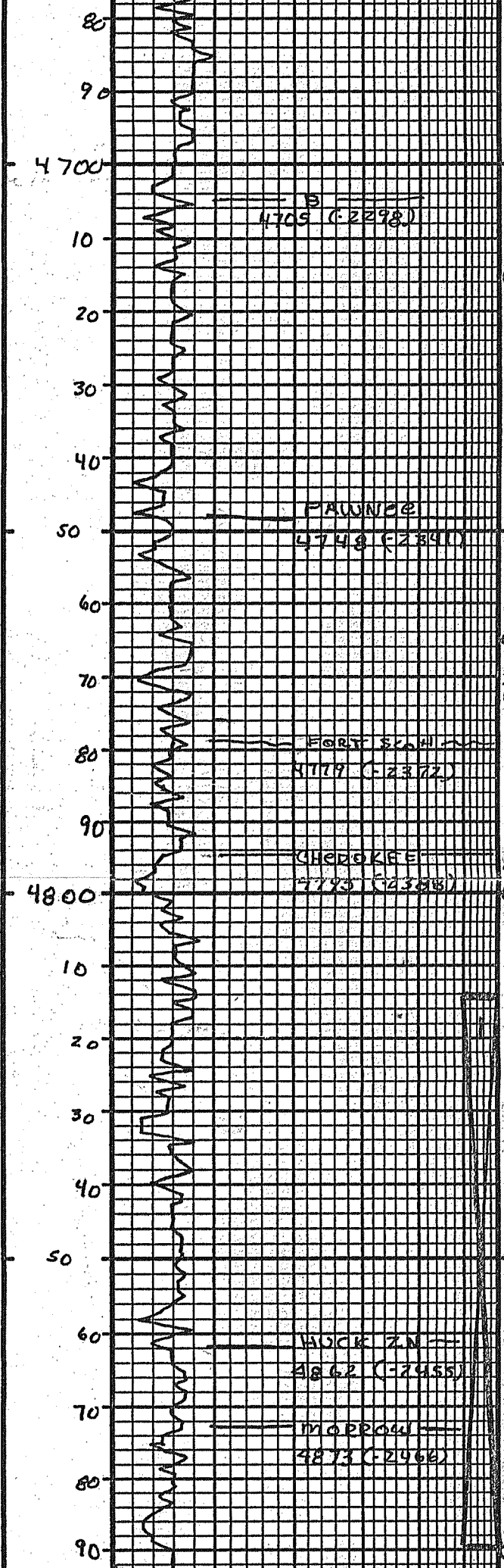
ls. tan - fn - xln + foss w/
same foss Δ, foss Δ
N.S.

ls. tan - brn, dis, N.V. N.S.

sh. gray's - MARL

SHLY, N.S.

ls. tan - brn, fn - xln + dis
N.V. N.S.



ls. tan - brn, dse, NVB NLS
 ls. tan - brn, dse, Hrd
 tight rx, NVB NLS
 SH. GRV'S.
 ls. tan. fn-xln w/ fr foss
 NLS, NO odor
 ls. tan, fn-xln - foss w/
 pr. fr NLS NO KICK
 ls. tan - lt brn - dse, NVB
 NLS
 ls. H tan - H tan, fn-xln
 - dse NVB NLS
 SH. md - drk gry - blk
 ls. tan, fn-xln - sh. foss w/
 poor foss - 2 pr. NLS
 ls. tan - fn-xln - tight rx
 pr - NVB NLS sh. blk
 SH. drk gry
 ls. H tan - lt brn - con
 fn-xln - dse NVB NLS
 sh. blk
 ls. g/a dse, NVB NLS
 ls. tan - con, fn-xln -
 dse, NVB NLS
 blk carb sh
 ls. tan - lt brn, dse
 NVB NLS
 ls. tan - lt brn, dse, NLS
 ls. tan - lt brn, dse
 NVB NLS
 SH - drk gry
 ls. tan - lt brn, fn-xln - dse
 tight rx, NVB NLS
 ls. g/a dse, NVB NLS
 SH. med - drk gry
 ls. tan - gry, fn-xln - v-sh
 foss - 2 pr w/ grey sh in
 poor xln sh, NLS, NO odor
 ls. tan - fn-xln - v-sh foss
 2 prs grey sh - FBNT odor
 SH. gry s - pr. + ls. g/a
 SH. grn - gry lt gry +
 ls. from above.
 SH - GRV - GEN

4709 (-2298)

FAUNDEE

4748 (-2341)

FORT SCOTT

4779 (-2372)

CHEROKEE

4793 (-2386)

BUCK ZN

4862 (-2455)

MORROW

4873 (-2466)

DST NO 1 4814' - 4890'
 wk surf. blow - died in 8 min
 30" 30" 30" 30"
 Rec: 5' mud
 SIP: 38" - 30"
 FP: 19" - 20" + 20" - 20"
 NP: 2376" - 2329"
 No pressure



4900
10
20
30
40
50
60
70
80
90
5000
10
20
30
40
50

H 2896 (F2489)

N.S.
N.K.

N.S.
N.K.

N.S.
N.K.

N.S.
N.K.

N.S.
N.K.

Ls. Crm-tan, fn-xln + foss
+ light Br. NV Ø. N.S.

Ls. Crm-tan, suc-xln -
foss w/ fr suc-foss, fr
N.S.

Ls. Crm-tan, fn-xln + foss
+ light fr foss Ø.

Ls. Crm-tan, suc-xln - foss
w/ fr suc - var. foss Ø.
N.S.

Ls. tan-Crm, fn-xln - foss
N.S.

Ls. Crm - H tan, foss w/
gd foss - var Ø. N.S.

Ls. Crm - H tan, fn-xln
foss w/ gd foss - var Ø.
N.S.

Ls. Crm - H tan, fn-xln - foss
w/ gd foss - var Ø. N.S.

Ls. H tan-Crm - grv
fn-xln - foss w/ fr
foss var Ø. N.S.

Ls. Crm - Gvy, foss, w/
gd foss - var Ø.

RTD 4520
ELTD 4519

<p>DEPTH</p>	<p>2" 10" 20" 30" 40"</p> <p>Rate of Penetration increases PER FOOT DRILLING TIME IN MINUTES</p>	<p>LITHOLOGY</p>	<p>SAMPLE DESCRIPTIONS</p>	<p>REMARKS</p>

SCALE " = 100'

gypsum	salt	sandstone	shale	carb sh	limestone	ool. lime	chert	dolomite

LEGEND