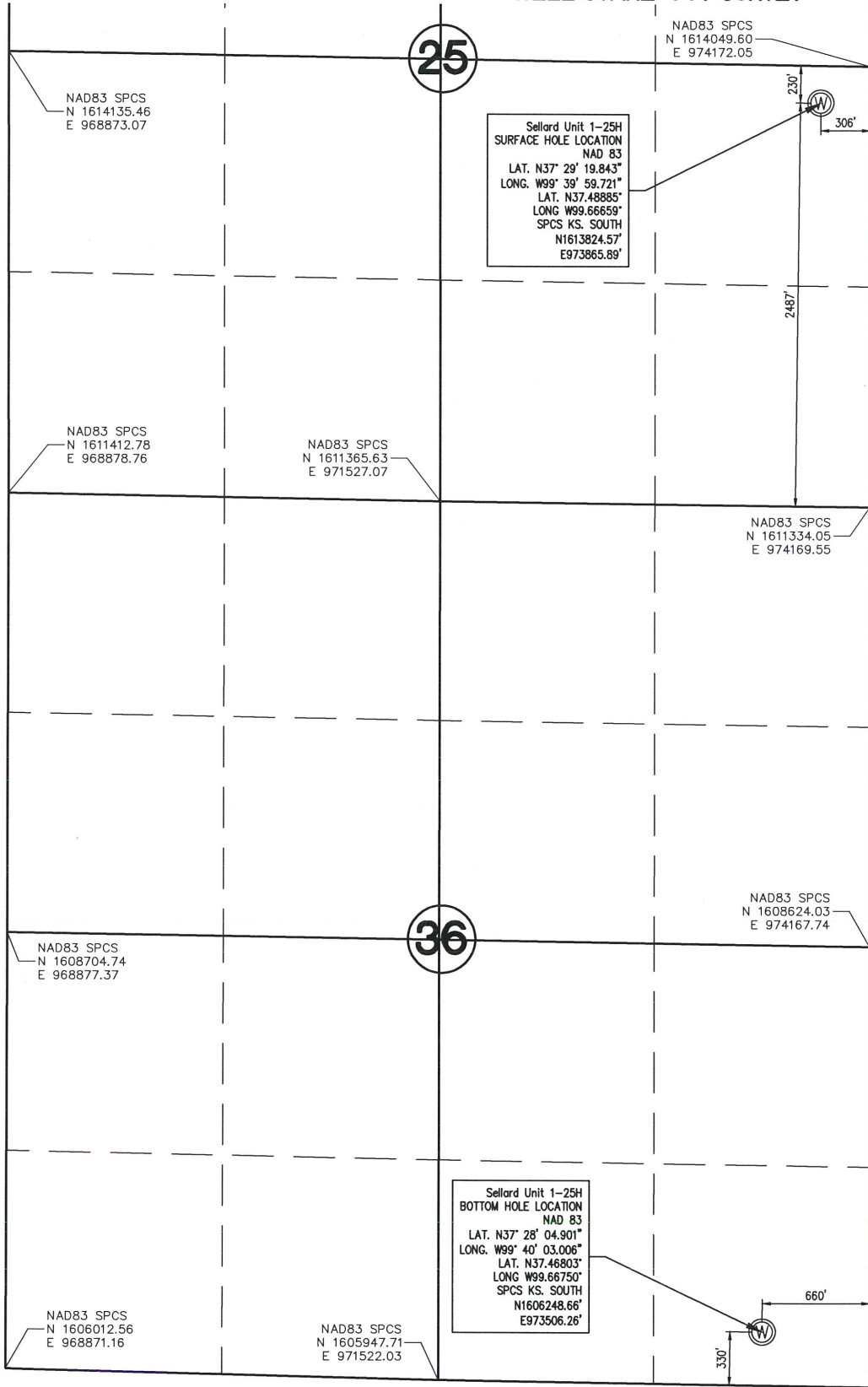


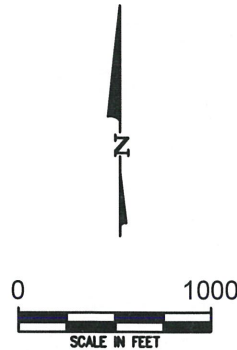
WELL STAKE-OUT SURVEY



Sellard Unit 1-25H
 SURFACE HOLE LOCATION
 NAD 83
 LAT. N37° 29' 19.843"
 LONG. W99° 39' 59.721"
 LAT. N37.48885°
 LONG W99.66659°
 SPCS KS. SOUTH
 N1613824.57'
 E973865.89'

Sellard Unit 1-25H
 BOTTOM HOLE LOCATION
 NAD 83
 LAT. N37° 28' 04.901"
 LONG. W99° 40' 03.006"
 LAT. N37.46803°
 LONG W99.66750°
 SPCS KS. SOUTH
 N1606248.66'
 E973506.26'

SURVEY DATUMS (shown on drawing)
 Horz. Datum NAD83(CORS96)
 Vert. Datum NAVD88(GEOID12)
 Ks. SPCS South Zone (US Feet)



Lease Name: Sellard Unit
 Well No. 1-25H
 Surface El. at SHL: 2428 NAVD88
 Well location Co./State: Ford Co. Kansas
 Well location Section: 25 & 36-T29S-R22W

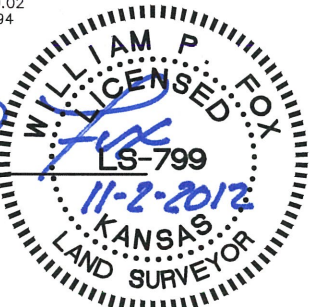
Alternate Datums

Horz. Datum NAD27
 Sellard Unit 1-25H SHL Lat. N37.488824° Long. W99.666187°

State of Kansas)
)SS
 Sedgwick County)

This is to certify that this map or plat and the survey on which it is based was made by me or under my direct supervision and that to the best of knowledge and belief, this is a true and correct exhibit of said Survey. The wells shown hereon were staked October 25, 2012 at the coordinate location noted.

William P. Fox
 William P. Fox LS 799
 This survey is valid only if print bears Surveyor's seal signed in blue ink.



POE & ASSOCIATES, INC.
 CONSULTING ENGINEERS
 5940 E. Central, Suite 200 ■ Wichita, KS 67208-4242
 Phone 316/685-4114 ■ FAX 316/685-4444