



Fall & Associates
 Stake and Elevation Service
 719 W. 5th Street
 P.O. Box 494
 Concordia, MS. 66901
 1-800-536-2821

Date 11-12-12

Invoice Number 1106121

MURFIN DRILLING

Operator

2-1

Number

Ruder 'A'

Farm Name

Trego-KS

County-State

1

S

11s

T

24w

R

1680'FSL 860'FEL

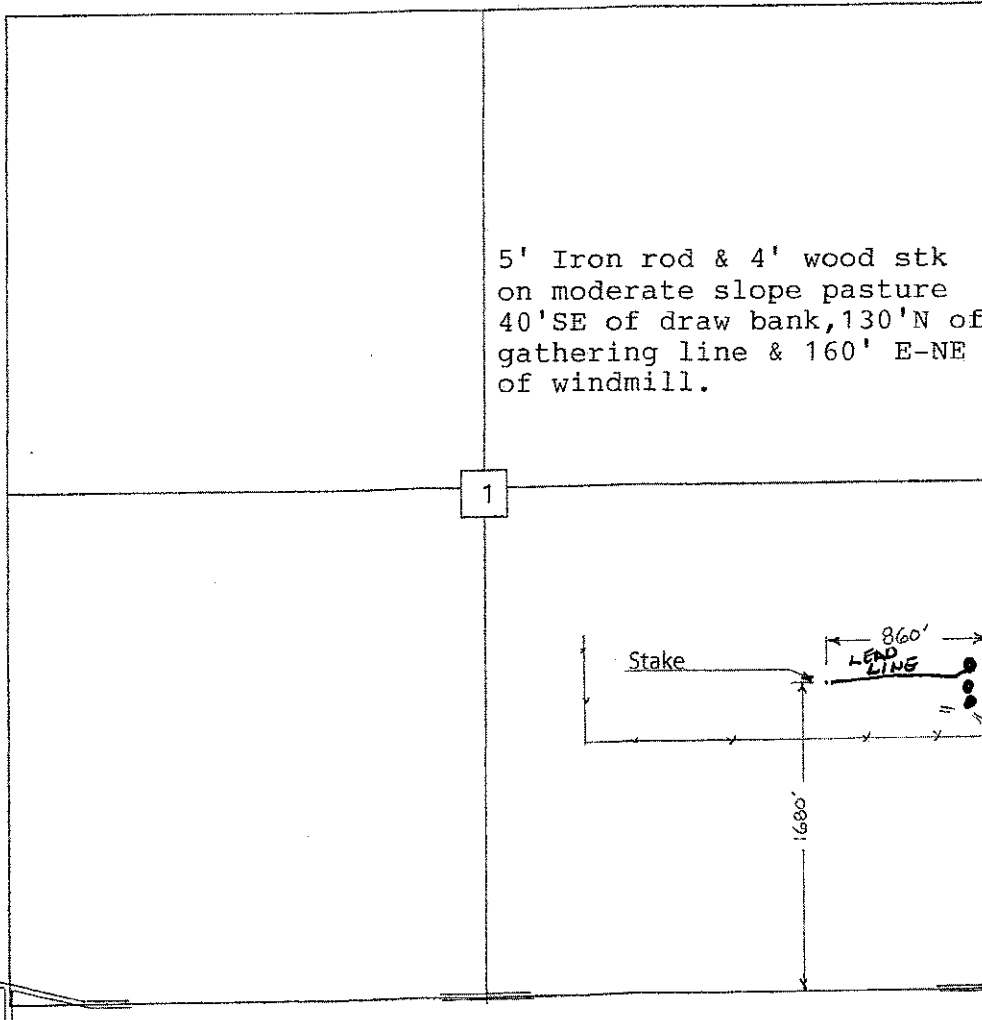
Location

Murfin Drilling
 250 N. Water
 Suite 300
 Wichita, KS. 67202

Elevation 2291 Gr.

Ordered By: Shauna

Scale 1"=1000'



3 mi. E
 1 mi. N
 to Hwy 283 @ Trego/
 Graham
 Co. Line