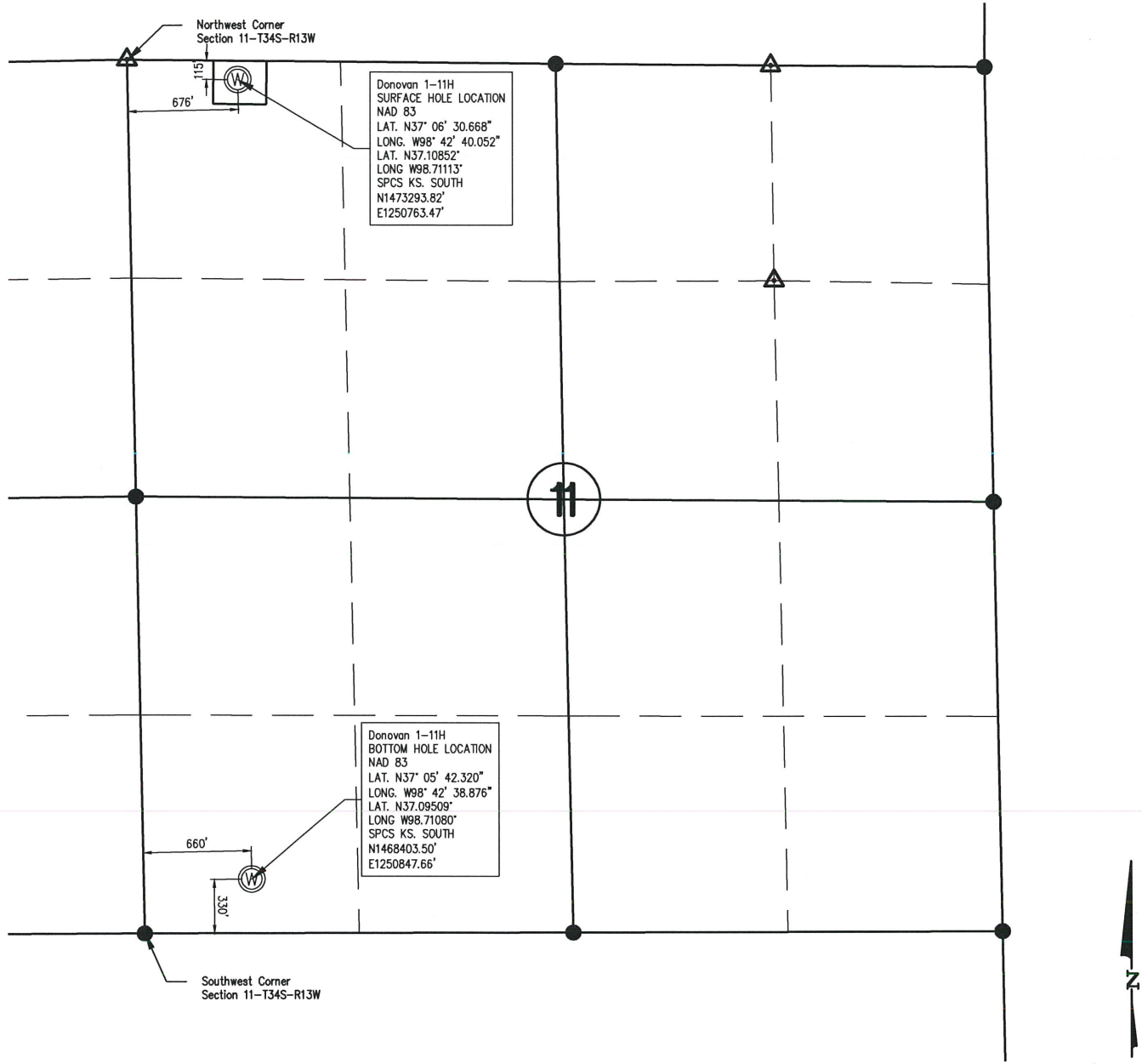


**WELL STAKE-OUT SURVEY**



Donovan 1-11H  
SURFACE HOLE LOCATION  
NAD 83  
LAT. N37° 06' 30.668"  
LONG. W98° 42' 40.052"  
LAT. N37.10852°  
LONG W98.71113°  
SPCS KS. SOUTH  
N1473293.82'  
E1250763.47'

Donovan 1-11H  
BOTTOM HOLE LOCATION  
NAD 83  
LAT. N37° 05' 42.320"  
LONG. W98° 42' 38.876"  
LAT. N37.09509°  
LONG W98.71080°  
SPCS KS. SOUTH  
N1468403.50'  
E1250847.66'

Lease Name: Donovan  
Well No. 1-11H  
Surface El. at SHL stake: 1655 NAVD88  
Well location Co./State: Barber Co. Kansas  
Well location Section: 11-T34S-R13W

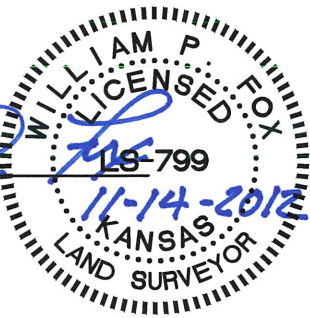
Alternate Datums  
Horz. Datum NAD27  
Donovan #1-11H Lat. N37.108494° Long. W98.710763°

SURVEY DATUMS (shown on drawing)  
Horz. Datum NAD83(CORS96)  
Vert. Datum NAVD88(GEOID09)  
Ks. SPCS South Zone (US Feet)

State of Kansas )  
                          )SS  
Sedgwick County )

This is to certify that this map or plat and the survey on which it is based was made by me or under my direct supervision and that to the best of knowledge and belief, this is a true and correct exhibit of said Survey. The wells shown hereon were staked November 14, 2012 at the coordinate location noted.

*William P. Fox*  
William P. Fox LS 799  
This survey is valid only if print bears Surveyor's seal signed in blue ink.



**POE & ASSOCIATES, INC.**  
CONSULTING ENGINEERS  
5940 E. Central, Suite 200 ■ Wichita, KS 67208-4242  
Phone 316/685-4114 ■ FAX 316/685-4444