

Thomas J. Funk
Petroleum Geologist

Geologists' Report
Drilling Time and Sample Log

OPERATOR Murfin Drilling Co., Inc
LEASE Larry WELL NO #1-20

FIELD Wildcat API 15-109-21118

LOCATION 2310' FSL & 850' FEL
SEC. 20 TWP. 12S RGE. 32W

COUNTY Logan STATE Kansas

CONTRACTOR Murfin Drig Co Rig #22
COMM 7/20/2012 COMP 7/28/2012
RTD 4:50 LOG TD 4:52
SAMPLES SAVED FROM 3700 TO TD
DRILLING TIME KEPT FROM 3700 TO TD
SAMPLES EXAMINED FROM 3700 TO TD

SECTIOAL SUPERVISION FROM 3920 TO TD
MUD UP 3200 TYPE MUD Chemical

FORMATION LOG SAMPLE STRUCT
TOP DATUM TOP DATUM COMP
Anhydrite 2582 (+493) 2577 (+489) -12
B/Anhydrite 2604 (+461) 2600 (+465) -10
Topeka 3802 (-737) 3800 (-735) -13
Healdene Sh 4022 (-957) 4020 (-955) -10
Lansing 4066 (-1001) 4064 (-999) -19
Murdock Creek 4211 (-1146) 4210 (-1145) -8
Stark Sh 4296 (-1231) 4294 (-1229) -11
Marmaton 4395 (-1330) 4394 (-1329) -1
Pawnee 4496 (-1431) 4494 (-1429) -10
Cherokee Sh 4577 (-1512) 4576 (-1510) -10
Johnson Zone 4620 (-1555) 4618 (-1553) -10
Mississippi 4676 (-1611) 4673 (-1610) -17

ELECTRICAL SURVEYS
Log-Tech Log-Tech
DIL DIL
DUCP DUCP
BHCS BHCS



None

CASING RECORD
SURFACE 8 5/8" at 226'KB w/175sx
PRODUCTION TO TD

ELEVATION
KB 3065'
DF
GL 3054'
Measurements Are All From KB

Daily Progress
Date Depth NO Size Make Type Depth Out Feet Hours
7/20/12 Stud 1 12 1/4 GMS RR 227 227 3
7/21/12 2010 2 7 7/8" HTC DP906F 3650 3423 39
7/22/12 3650 3 7 7/8" HTC GX22s 4750 1100 96
7/24/12 4165
7/25/12 4280
7/26/12 4440
7/27/12 4639
7/28/12 4750 TD Logging

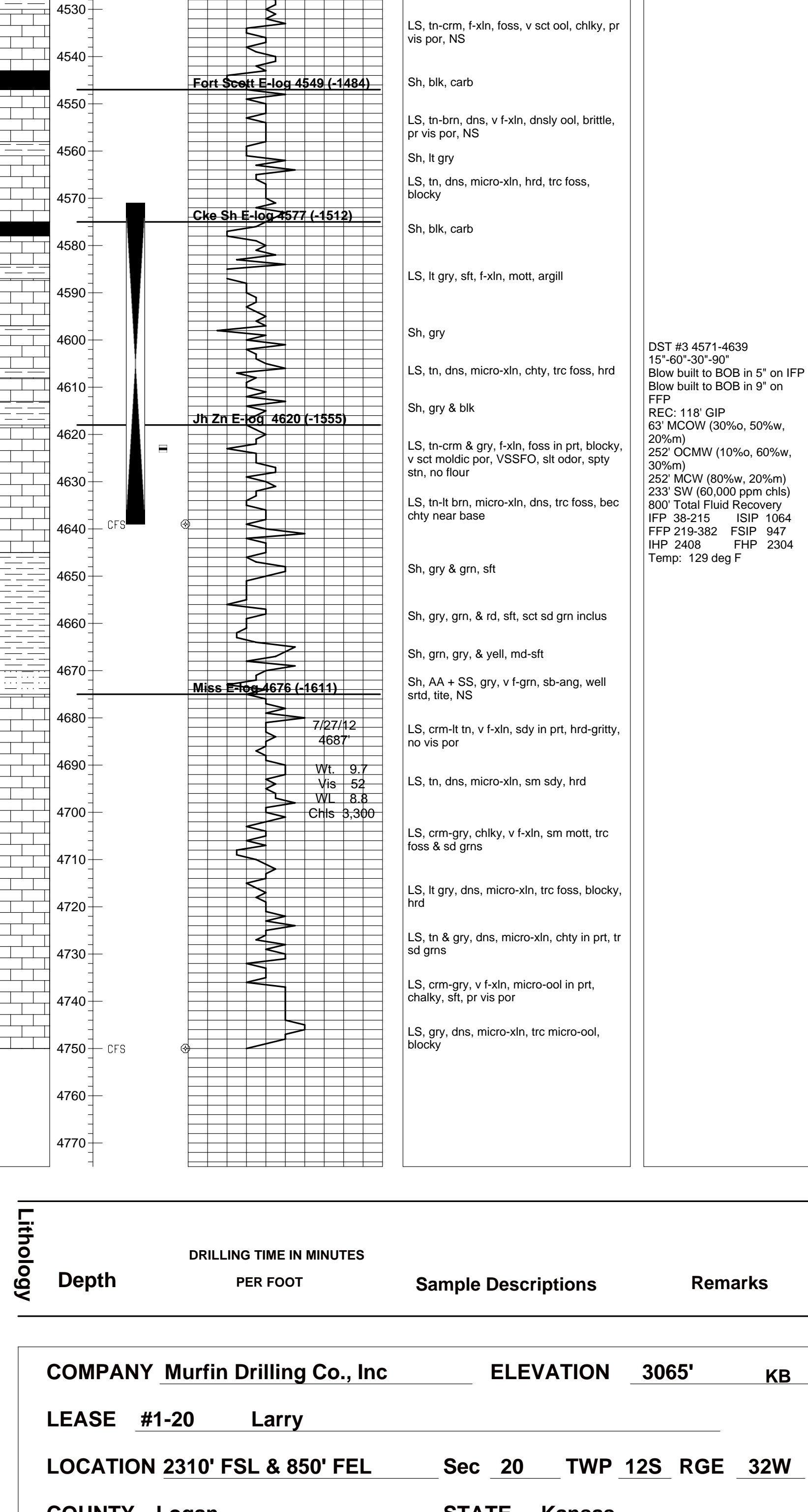
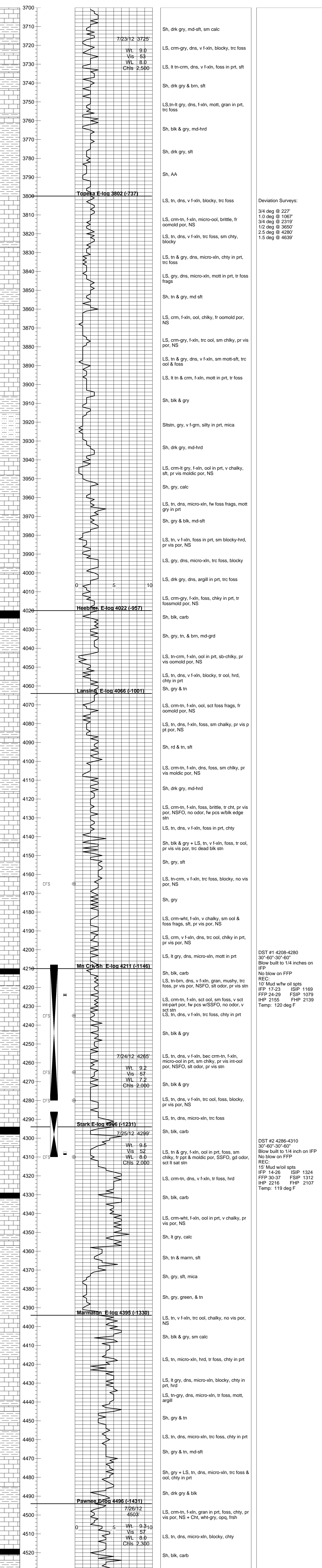
Remarks And Recommendations:
Based upon log analysis, DST recovery, and sample examination, it was decided to plug and abandon the #1-20 Larry.

Thomas Funk
Petroleum Geologist

REFERENCE WELL FOR STRUCTURAL COMPARISON: Murfin Drig Co, #1-20 Stoecker, L, Logan Co, KS

LEGEND

	Anhydrite
	Salt
	Sandstone
	Shale
	Carb Shale
	Limestone
	Ool Limestone
	Chert
	Dolomite



COMPANY Murfin Drilling Co., Inc ELEVATION 3065' KB

LEASE #1-20 Larry

LOCATION 2310' FSL & 850' FEL Sec 20 TWP 12S RGE 32W

COUNTY Logan STATE Kansas