

ADVANTAGE ELEVATIONS

OIL FIELD SURVEYORS

BOX 8604 - PRATT, KS 67124
(620) 672-6491

117121
INVOICE NO.

LOTUS OPERATING COMPANY LLC. 2 Burgess
OPERATOR NO. FARM

Barber 35 34s 12w 1485' FNL & 990' FEL
COUNTY S T R LOCATION

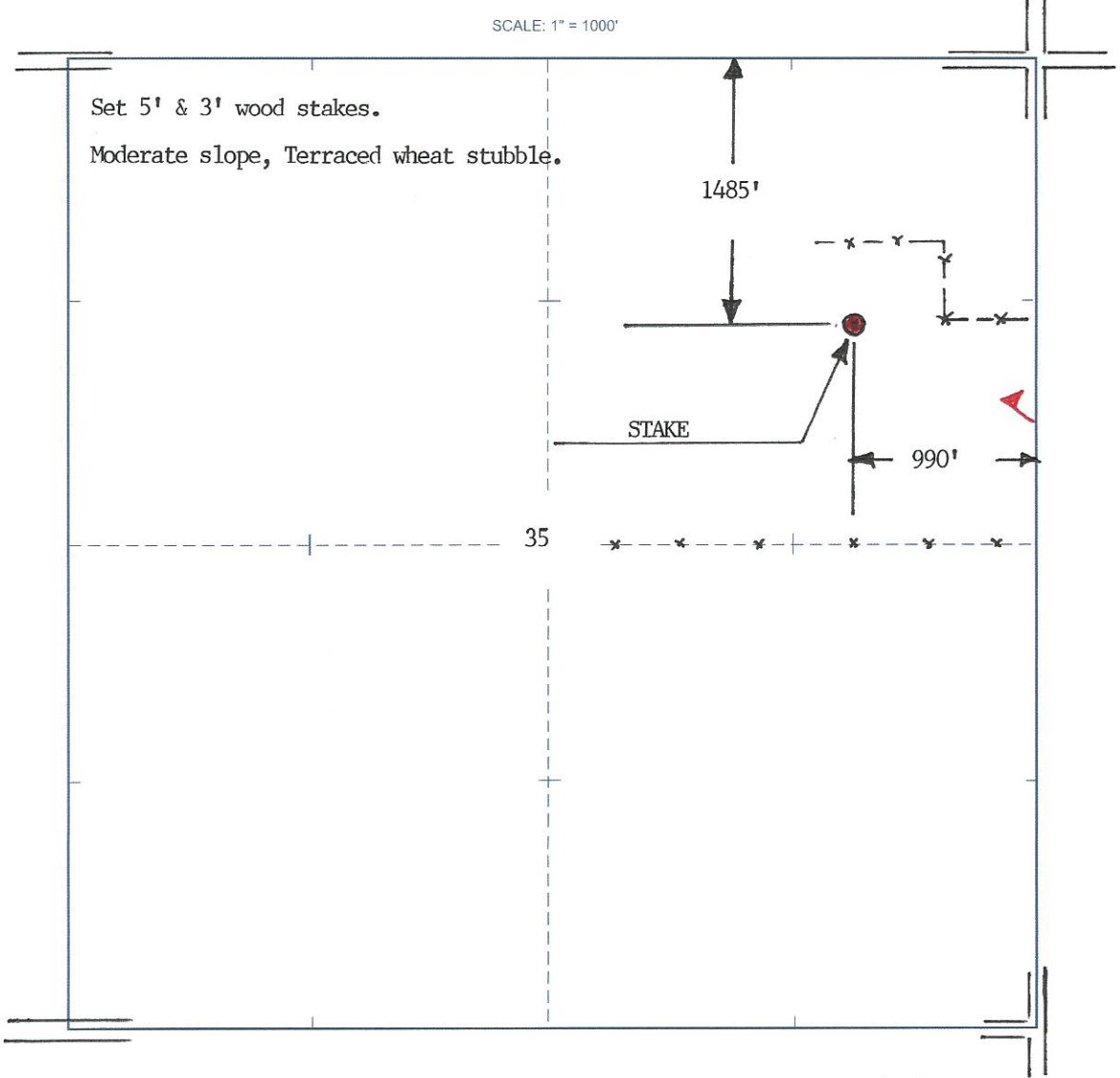
ELEVATION: 1426' GR



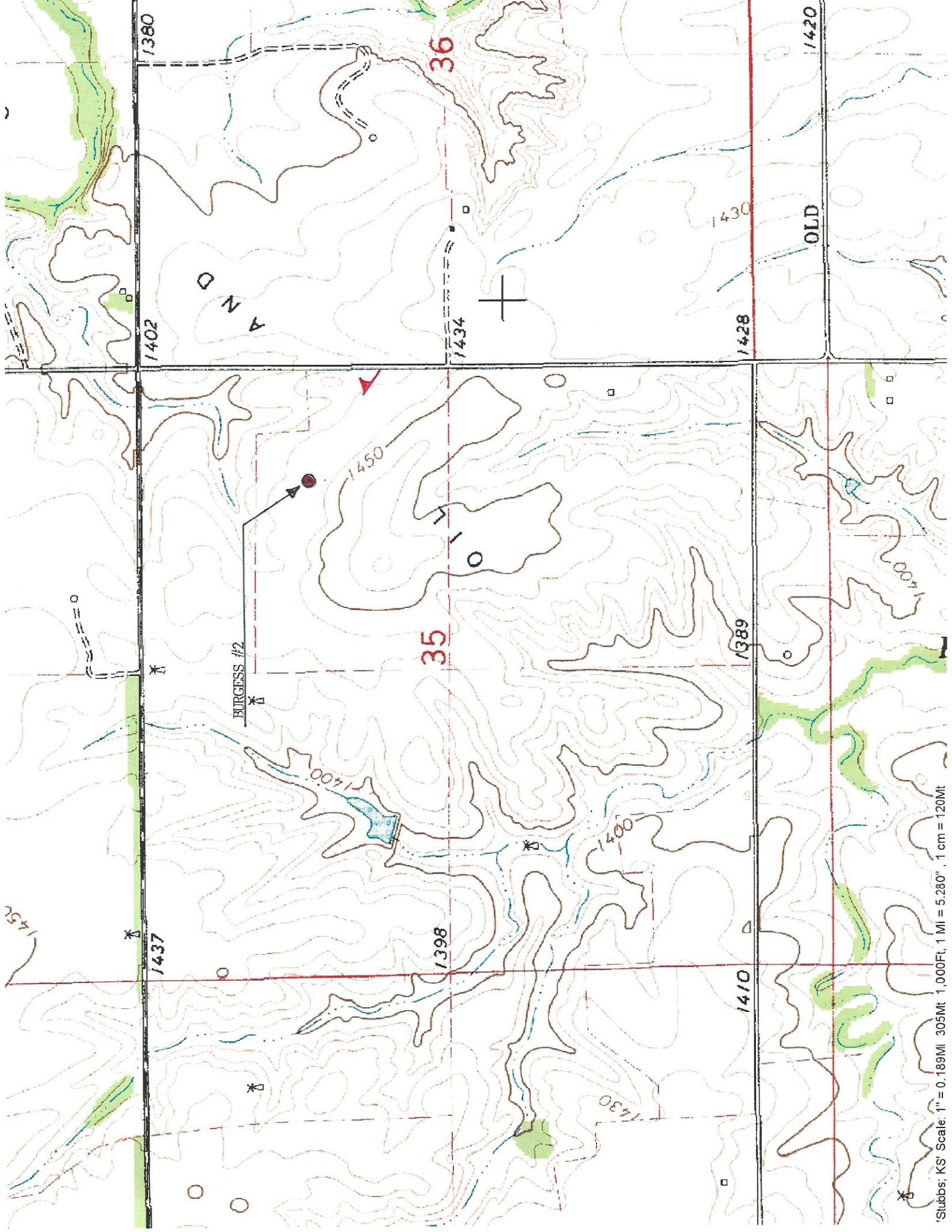
LOTUS OPERATING COMPANY LLC
100 S Main, Ste' 420
Wichita, KS 67202

AUTHORIZED BY: Tim Hellman

SCALE: 1" = 1000'



DATE STAKED: 11/07/2012



'Stubbs, KS' Scale: 1" = 0.189Mi 305Mt 1,000Ft, 1 Mi = 5,280', 1 cm = 120Mt