



TRILOBITE TESTING, INC.

DRILL STEM TEST REPORT

Woolsey Oper. Co. LLC.
 125 N. Market Ste. 1000
 Wichita, KS 67202-1729
 ATTN: Scott Alberg

18-32s-12w
Warren Fee #10
 Job Ticket: 49528 **DST#: 1**
 Test Start: 2012.07.27 @ 09:22:49

GENERAL INFORMATION:

Formation: **Mississippi**
 Deviated: No Whipstock: ft (KB)
 Time Tool Opened: 11:15:04
 Time Test Ended: 18:04:19
 Interval: **4362.00 ft (KB) To 4423.00 ft (KB) (TVD)**
 Total Depth: 4423.00 ft (KB) (TVD)
 Hole Diameter: 7.88 inches Hole Condition: Fair
 Test Type: Conventional Bottom Hole (Initial)
 Tester: Ryan Reynolds
 Unit No: 63
 Reference Elevations: 1625.00 ft (KB)
 1615.00 ft (CF)
 KB to GR/CF: 10.00 ft

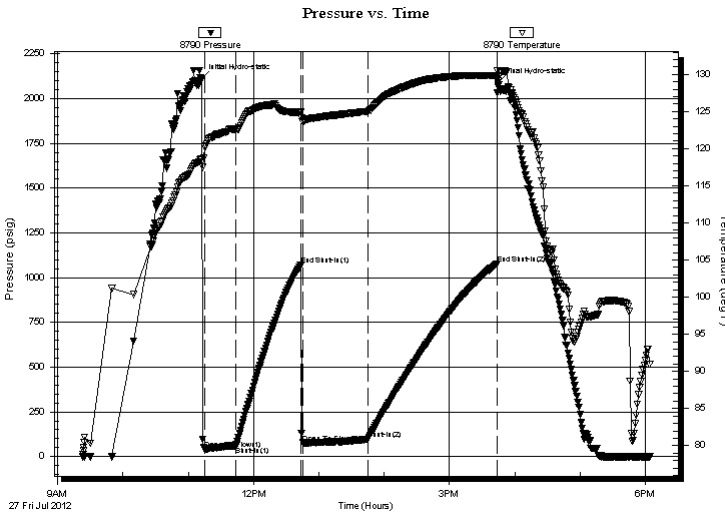
Serial #: 8790

Inside

Press @ Run Depth: 96.19 psig @ 4366.00 ft (KB) Capacity: 8000.00 psig
 Start Date: 2012.07.27 End Date: 2012.07.27 Last Calib.: 2012.07.27
 Start Time: 09:22:54 End Time: 18:04:19 Time On Btm: 2012.07.27 @ 11:12:19
 Time Off Btm: 2012.07.27 @ 15:44:49

TEST COMMENT: IF: Strong blow . BOB 2min. No GTS
 IS: No blow
 FF: Strong blow . BOB immed. GTS in 45min. 7.3mcf @ 60min.
 FS: No blow

PRESSURE SUMMARY



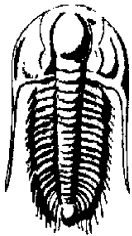
| Time (Min.) | Pressure (psig) | Temp (deg F) | Annotation |
|-------------|-----------------|--------------|----------------------|
| 0 | 2113.60 | 118.63 | Initial Hydro-static |
| 3 | 38.94 | 120.18 | Open To Flow (1) |
| 32 | 59.50 | 122.55 | Shut-In(1) |
| 92 | 1070.17 | 124.92 | End Shut-In(1) |
| 93 | 74.67 | 123.64 | Open To Flow (2) |
| 153 | 96.19 | 125.01 | Shut-In(2) |
| 272 | 1076.66 | 129.81 | End Shut-In(2) |
| 273 | 2090.24 | 128.33 | Final Hydro-static |

Recovery

| Length (ft) | Description | Volume (bbl) |
|-------------|--------------------------------|--------------|
| 110.00 | OGCM 15%oil, 25%gas, 60%mud | 0.54 |
| 100.00 | SLI OGCM 3%oil, 15%gas, 82%mud | 1.32 |
| | | |
| | | |
| | | |

Gas Rates

| | Choke (inches) | Pressure (psig) | Gas Rate (Mcf/d) |
|----------------|----------------|-----------------|------------------|
| First Gas Rate | 0.13 | 4.00 | 6.89 |
| Last Gas Rate | 0.13 | 5.00 | 7.26 |
| Max. Gas Rate | 0.13 | 5.00 | 7.26 |



TRILOBITE TESTING, INC.

DRILL STEM TEST REPORT

Woolsey Oper. Co. LLC.

18-32s-12w

125 N. Market Ste. 1000
Wichita, KS 67202-1729

Warren Fee #10

ATTN: Scott Alberg

Job Ticket: 49528

DST#: 1

Test Start: 2012.07.27 @ 09:22:49

GENERAL INFORMATION:

Formation: **Mississippi**

Deviated: No Whipstock: ft (KB)

Time Tool Opened: 11:15:04

Time Test Ended: 18:04:19

Interval: **4362.00 ft (KB) To 4423.00 ft (KB) (TVD)**

Total Depth: 4423.00 ft (KB) (TVD)

Hole Diameter: 7.88 inches Hole Condition: Fair

Test Type: Conventional Bottom Hole (Initial)

Tester: Ryan Reynolds

Unit No: 63

Reference Elevations: 1625.00 ft (KB)

1615.00 ft (CF)

KB to GR/CF: 10.00 ft

Serial #: 8792 Outside

Press @ Run Depth: psig @ 4366.00 ft (KB)

Capacity: 8000.00 psig

Start Date: 2012.07.27

End Date:

2012.07.27

Last Calib.:

2012.07.27

Start Time: 09:18:55

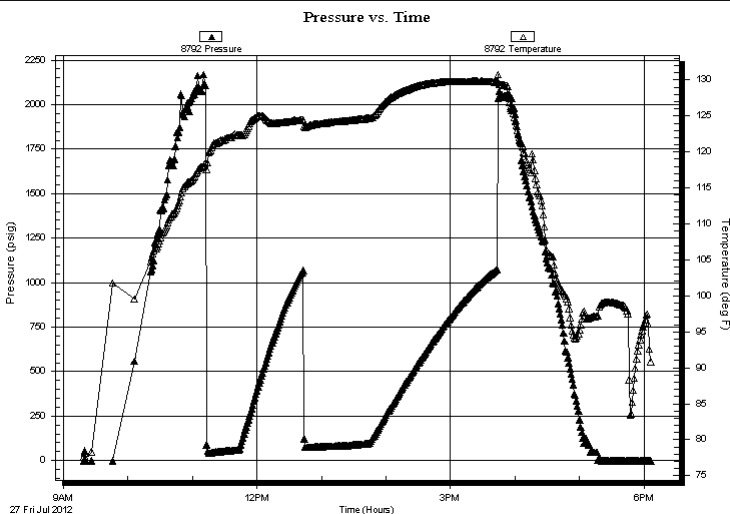
End Time:

18:06:20

Time On Btm:

Time Off Btm:

TEST COMMENT: IF: Strong blow . BOB 2min. No GTS
IS: No blow
FF: Strong blow . BOB immed. GTS in 45min. 7.3mcf @ 60min.
FSI: No blow



PRESSURE SUMMARY

| Time (Min.) | Pressure (psig) | Temp (deg F) | Annotation |
|-------------|-----------------|--------------|------------|
| | | | |
| | | | |
| | | | |
| | | | |
| | | | |
| | | | |
| | | | |
| | | | |
| | | | |
| | | | |
| | | | |
| | | | |
| | | | |
| | | | |
| | | | |
| | | | |
| | | | |
| | | | |
| | | | |
| | | | |
| | | | |
| | | | |
| | | | |
| | | | |
| | | | |

Recovery

| Length (ft) | Description | Volume (bbl) |
|-------------|--------------------------------|--------------|
| 110.00 | OGCM 15%oil, 25%gas, 60%mud | 0.54 |
| 100.00 | SLI OGCM 3%oil, 15%gas, 82%mud | 1.32 |
| | | |
| | | |
| | | |
| | | |

Gas Rates

| | Choke (inches) | Pressure (psig) | Gas Rate (Mcf/d) |
|----------------|----------------|-----------------|------------------|
| First Gas Rate | 0.13 | 4.00 | 6.89 |
| Last Gas Rate | 0.13 | 5.00 | 7.26 |
| Max. Gas Rate | 0.13 | 5.00 | 7.26 |



**TRILOBITE
TESTING, INC.**

DRILL STEM TEST REPORT

FLUID SUMMARY

Woolsey Oper. Co. LLC.

18-32s-12w

125 N. Market Ste. 1000
Wichita, KS 67202-1729

Warren Fee #10

Job Ticket: 49528

DST#: 1

ATTN: Scott Alberg

Test Start: 2012.07.27 @ 09:22:49

Mud and Cushion Information

Mud Type: Gel Chem

Cushion Type:

Oil API:

deg API

Mud Weight: 9.00 lb/gal

Cushion Length:

ft

Water Salinity:

5000 ppm

Viscosity: 48.00 sec/qt

Cushion Volume:

bbbl

Water Loss: 9.58 in³

Gas Cushion Type:

Resistivity: ohm.m

Gas Cushion Pressure:

psig

Salinity: 5000.00 ppm

Filter Cake: 0.02 inches

Recovery Information

Recovery Table

| Length ft | Description | Volume bbl |
|--------------|--------------------------------|---------------|
| 110.00 | OGCM 15%oil, 25%gas, 60%mud | 0.541 |
| 100.00 | SLI OGCM 3%oil, 15%gas, 82%mud | 1.321 |

Total Length: 210.00 ft

Total Volume: 1.862 bbl

Num Fluid Samples: 1

Num Gas Bombs: 1

Serial #: RR-1

Laboratory Name: Caraway

Laboratory Location: Liberal, KS

Recovery Comments:



TRILOBITE
TESTING, INC.

DRILL STEM TEST REPORT

GAS RATES

Woolsey Oper. Co. LLC.

18-32s-12w

125 N. Market Ste. 1000
Wichita, KS 67202-1729

Warren Fee #10

Job Ticket: 49528

DST#: 1

ATTN: Scott Alberg

Test Start: 2012.07.27 @ 09:22:49

Gas Rates Information

Temperature: 59 (deg F)
Relative Density: 0.65
Z Factor: 0.8

Gas Rates Table

| Flow Period | Elapsed Time | Choke (inches) | Pressure (psig) | Gas Rate (Mcf/d) |
|-------------|--------------|----------------|-----------------|------------------|
| 2 | 45 | 0.13 | 4.00 | 6.89 |
| 2 | 45 | 0.13 | 4.00 | 6.89 |
| 2 | 50 | 0.13 | 5.00 | 7.26 |

Serial #: 8790

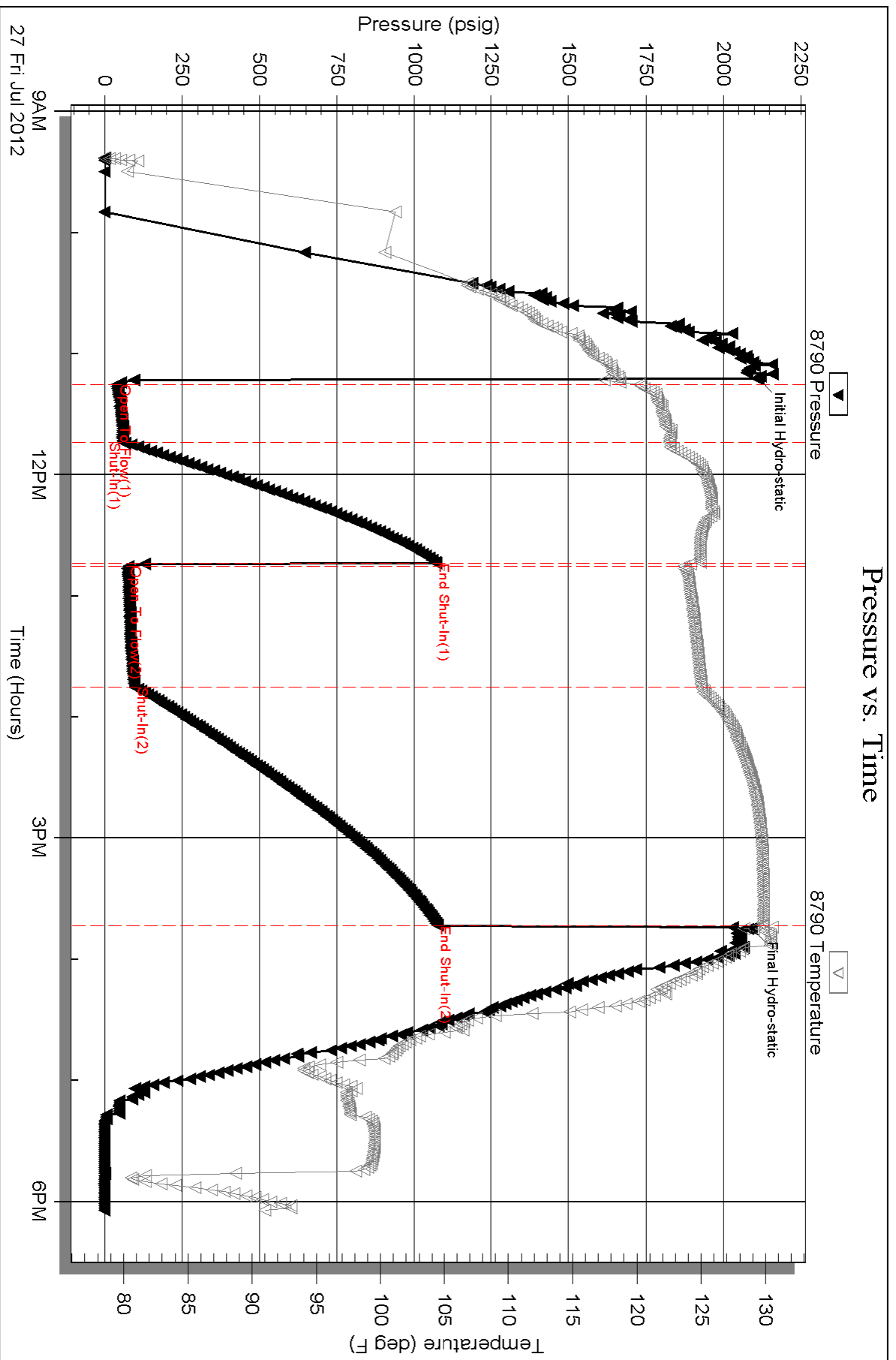
Inside

Woodsey Oper. Co. LLC.

Warren Fee #10

DST Test Number: 1

Pressure vs. Time



Serial #: 8792

Outside Woodsey Oper. Co. LLC

Warren Fee #10

DST Test Number: 1

