



TRILOBITE TESTING, INC.

DRILL STEM TEST REPORT

Shakespeare Oil Company, Inc

26-13-34 Logan Co KS

202 W. Main St.
Salem IL
62881
ATTN: Tim Priest

Younklin 1 36

Job Ticket: 49869

DST#: 4

Test Start: 2012.11.08 @ 08:03:15

GENERAL INFORMATION:

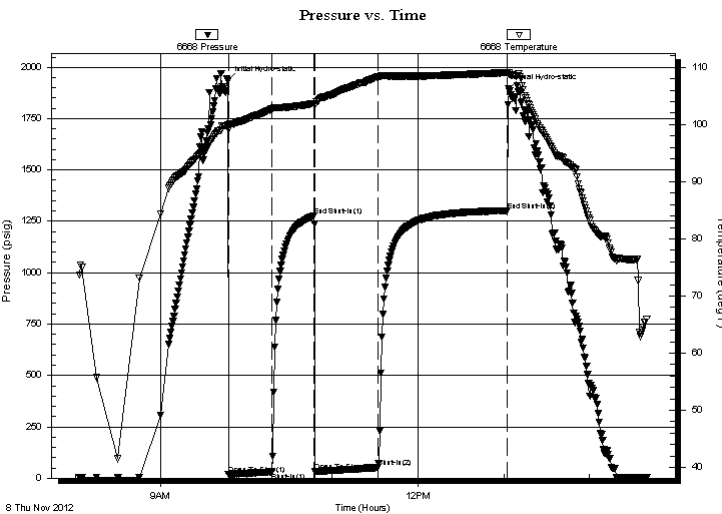
Formation: **J**
 Deviated: **No Whipstock:** ft (KB)
 Time Tool Opened: 09:47:15
 Time Test Ended: 14:40:30
 Interval: **4014.00 ft (KB) To 4035.00 ft (KB) (TVD)**
 Total Depth: 4035.00 ft (KB) (TVD)
 Hole Diameter: 7.88 inches Hole Condition: **Poor**
 Test Type: **Conventional Bottom Hole (Reset)**
 Tester: **Mike Roberts**
 Unit No: **65**
 Reference Elevations: 2885.00 ft (KB)
 2880.00 ft (CF)
 KB to GR/CF: 5.00 ft

Serial #: 6668

Inside

Press @ Run Depth: 50.96 psig @ 4015.00 ft (KB) Capacity: 8000.00 psig
 Start Date: 2012.11.08 End Date: 2012.11.08 Last Calib.: 2012.11.08
 Start Time: 08:03:15 End Time: 14:40:30 Time On Btm: 2012.11.08 @ 09:47:00
 Time Off Btm: 2012.11.08 @ 13:03:30

TEST COMMENT: IF: Built to 1/2" blow
 IS: No return blow
 FF: Built to 1/4" blow
 FS: No return blow



PRESSURE SUMMARY

Time (Min.)	Pressure (psig)	Temp (deg F)	Annotation
0	1933.63	100.01	Initial Hydro-static
1	18.61	99.19	Open To Flow (1)
31	30.78	102.70	Shut-In(1)
61	1276.48	103.69	End Shut-In(1)
61	32.10	103.30	Open To Flow (2)
105	50.96	108.36	Shut-In(2)
196	1302.49	109.11	End Shut-In(2)
197	1898.22	108.99	Final Hydro-static

Recovery

Length (ft)	Description	Volume (bbl)
60.00	sw cm 5%sw 95%m	0.30

Gas Rates

Choke (inches)	Pressure (psig)	Gas Rate (Mcf/d)

* Recovery from multiple tests



**TRILOBITE
TESTING, INC.**

DRILL STEM TEST REPORT

FLUID SUMMARY

Shakespeare Oil Company, Inc

26-13-34 Logan Co KS

202 W. Main St.
Salem IL
62881

Younkin 1 36

Job Ticket: 49869

DST#: 4

ATTN: Tim Priest

Test Start: 2012.11.08 @ 08:03:15

Mud and Cushion Information

Mud Type: Gel Chem	Cushion Type:	Oil API:	deg API
Mud Weight: 9.00 lb/gal	Cushion Length: ft	Water Salinity:	33000 ppm
Viscosity: 58.00 sec/qt	Cushion Volume: bbl		
Water Loss: 6.39 in ³	Gas Cushion Type:		
Resistivity: 0.00 ohm.m	Gas Cushion Pressure: psig		
Salinity: 5400.00 ppm			
Filter Cake: 1.00 inches			

Recovery Information

Recovery Table

Length ft	Description	Volume bbl
60.00	sw cm 5%sw 95%m	0.295

Total Length: 60.00 ft Total Volume: 0.295 bbl

Num Fluid Samples: 0 Num Gas Bombs: 0 Serial #:

Laboratory Name: Laboratory Location:

Recovery Comments: RW=.341 @72.4= 33,000 ppm

