

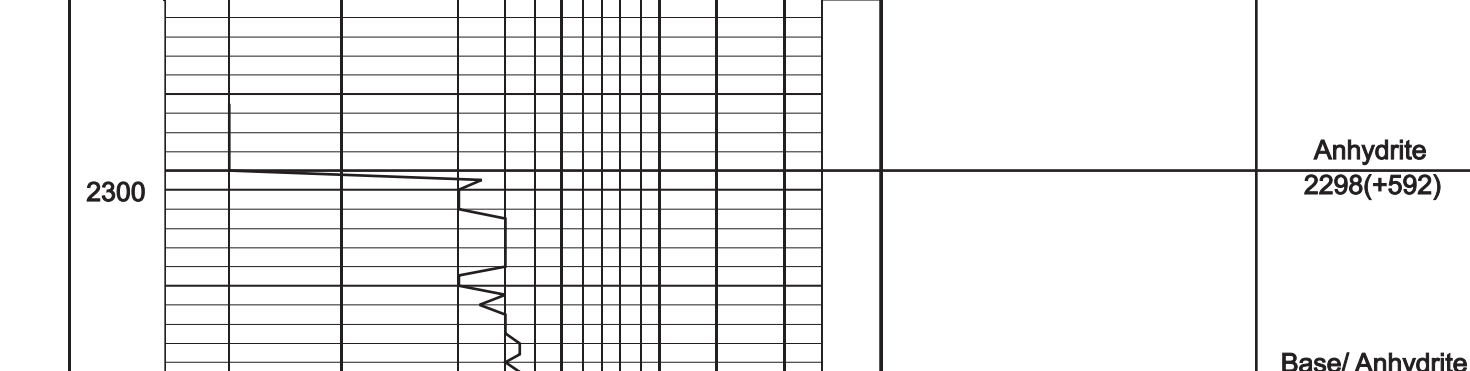
GEOLOGIST'S REPORT
DRILLING TIME AND SAMPLE LOG

COMPANY **SHAKESPARE OIL CO.** ELEVATIONS
 LEASE **YOANKIN L-36** 2890'
 FIELD **Whitetail** DF _____
 LOCATION **3351 FWL, 1100' FWL** GL 2880'
 SEC **36** TWPSP **13S** RGE **34W**
 COUNTY **Logan** STATE **Kansas** Measurements Are All From **KB**

CONTRACTOR **HD Drilling Rig #2**
 SPUD **11-1-12** COMP **11-12-12**
 RTD **4550'** LTD **4550'** CASING **N/A**
 MUD UP **3500'** TYPE MUD **Chemical** CONDUCTION **N/A**
 SAMPLES SAVED FROM **3600'** to RTD SURFACE **8-5/8" @ 222'**
 DRILLING TIME KEPT FROM **3600'** to RTD PRODUCTION _____
 SAMPLES EXAMINED FROM **3600'** to RTD
 GEOLOGICAL SUPERVISION FROM **3600'** to RTD
 GEOLOGIST ON WELL **Tim Priest** By: **Weatherford**

FORMATION TOPS ELECTRIC LOG SAMPLE
 Anyvrite 2298 (+592) 2298 (+592)
 Heebner Shale 3738 (-948) 3740 (-950)
 Lansing 3798 (-908) 3797 (-907)
 SARC 4039 (-1149) 4038 (-1148)
 BRC 4130 (-1240) 4131 (-1241)
 Fort Scott 4308 (-1418) 4306 (-1416)
 Cherokee Shale 4337 (-1447) 4336 (-1446)
 Mississippian 4474 (-1584) 4472 (-1582)

REMARKS Due to the negative results on drill stem tests and lack of shows, it was decided to plug and abandon the well.
 Respectfully Submitted,
API #15-109-21135-00-00 Tim Priest
 Petroleum Geologist



DEPTH	DRILLING TIME IN MINUTES PER FOOT Rate of Penetration Decreases	SAMPLE DESCRIPTION	REMARKS
2300			Anhydrite 2298(+592)
2320			Base/ Anhydrite 2320(+570)
3600		Ls crm-t gry, fn xtl, fos, sli chky, p-f int xtl-pp por, spdt blk stn, VSSFO, no odor, no fluor Sh blk, carb Sh red-maroon-gry, w/silts	Heebner 3740 (-850)
3700		Ls tan-gry, fn xtl, fos, sli chky, p-f int xtl-pp por, spdt blk stn, SSFO, no odor, dull fluor Ls crm-t gry, fn xtl, fos, chky, p-f int xtl por, NS Sh blk, carb	Toronto 3767 (-864)
3740		Ls tan-gry, fn xtl, fos, sli chky, p-f int xtl-pp por, spdt blk stn, SSFO, no odor, dull fluor Ls/Dol crm-tan, fn xtl, suc in prt, fint xtl por, NS Ls lt gry, fn-vfn xtl, arg in prt, mostly dnse	Lansing 3797 (-907)
3797		Ls crm, fn xtl, fos, ool in prt, sli chky, p-f int xtl & int ool por, NS Ls crm, vfn xtl, dnse Sh gm-gry	DST # 1 (3875'-3900') Rec: 310' WM(10%W,90%M) 1426' Wb, Total:1736' Fps: 120.428#/425-842# SIPs: 1216#/1222# HSPs: 1800#/1805# BHT: 114 deg F Clog: 32.000ppm
3800		Ls crm, fn xtl, fos, chky, p int xtl-pp por, spdt blk gil stn on several pcs, NFO, no odor, Ls crm, vfn xtl, chty, dnse Sh red-maroon	DST # 2 (3948'-3985') Rec: 369' SW FF: BOB in 26', no return FF: Surface blow, no return Fps: 22.106#/107-175# SIPs: 1263#/1258# HSPs: 1954#/1883# BHT: 115 deg F Clog: 33.000ppm
3900		Ls crm-t gry, fn xtl, sli fos, sli chky, p-f int xtl-pp por, spdt dk stn, VSSFO, no odor, no fluor Sh gm-gry-blk Ls crm-t gry, fn xtl, fos, chky, p-f int xtl-pp por, NS Ls lt gry-gry, vfn xtl, dnse Ls crm-t gry, fn xtl, fos, chky, p-f int xtl-pp por, NS Ls crm-t gry, vfn xtl, dnse	DST # 3 (3982'-4015') Rec: 399' SW FF: BOB in 15', no return FF: No blow, no return Rec: 2' Mud Fps: 20.238#/124-23# SIPs: 1177#/1139# HSPs: 1954#/1883# BHT: 107 deg F
3949		Ls crm-t gry, fn xtl, fos, chky, p-f int xtl-pp por, spdt blk gil stn on several pcs, NFO, no odor, Ls crm, vfn xtl, chty, dnse Sh red-maroon	DST # 4 (4014'-4035') Rec: 369' SW FF: BOB in 15', no return FF: Surface blow, no return Rec: 60' WM(5%W,95%M) Fps: 18.30#/32-50# SIPs: 1276#/1302# HSPs: 1933#/1888# BHT: 109 deg F
3982		Ls crm-t gry, fn xtl, fos, sli chky, p-f int xtl-pp por, spdt blk stn on several pcs, NFO, no odor, Ls crm, vfn xtl, chty, dnse Sh red-maroon	DST # 5 (4037'-4060') Rec: 493' SW FF: BOB in 10', no return FF: Surface blow, no return Rec: 25-117#/121-234# SIPs: 1300#/1288# HSPs: 1954#/1883# BHT: 120 deg F
3985		Sh blk, carb Ls tan-gry, vfn xtl, dnse Sh gm-gry	Muncie Creek 3949 (-1059)
4000		Ls crm-t gry, vfn xtl, dnse Ls crm-tan-gry, fn xtl, fos, sli chky, p-f int xtl-pp por, spdt blk stn on several pcs, NFO, no odor, Ls crm, vfn xtl, chty, dnse Sh gm-gry Ls crm-tan-gry, fn xtl, fos, sli chky, p-f int xtl-pp por, spdt blk stn on several pcs, NFO, no odor, Ls crm, vfn xtl, chty, dnse Sh red-maroon	Stark 4038 (-1148)
4038		Ls crm-t gry, vfn xtl, dnse Ls crm-tan-gry, fn xtl, fos, sli chky, p-f int xtl-pp por, spdt blk stn on several pcs, NFO, no odor, Ls crm, vfn xtl, chty, dnse Sh gm-gry Ls crm-tan-gry, fn xtl, fos, sli chky, p-f int xtl-pp por, spdt blk stn on several pcs, NFO, no odor, Ls crm, vfn xtl, chty, dnse Sh red-maroon	DST # 6 (4156'-4195') Rec: 493' SW FF: BOB in 10', no return FF: Surface blow, no return Rec: 20-22#/21-23# SIPs: 1276#/1302# HSPs: 2021#/2100# BHT: 110 deg F
4060		Ls crm-t gry, vfn xtl, dnse Ls crm-tan-gry, fn xtl, fos, sli chky, p-f int xtl-pp por, spdt blk stn on several pcs, NFO, no odor, Ls crm, vfn xtl, chty, dnse Sh gm-gry Ls crm-tan-gry, fn xtl, fos, sli chky, p-f int xtl-pp por, spdt blk stn on several pcs, NFO, no odor, Ls crm, vfn xtl, chty, dnse Sh red-maroon	Hushpuckney Sh 4079 (-1189)
4079		Sh blk, carb Ls tan-gry, vfn xtl, chty, dnse Sh gm-gry Ls crm-t gry, vfn xtl, sli chty, dnse Ls crm-gry, vfn xtl, dnse Sh blk	B.K.C. 4131 (-1241)
4100		Ls crm-gry, fn xtl, sli fos, chky, dnse Sh blk Ls crm-gry, fn xtl, sli fos, chky, dnse	Marmaton 4153 (-1263)
4131		Sh gry Sh var ool, silty-sli sandy Sh gry Ls crm-t gry, vfn xtl, dnse Ls crm-tan-gry, fn xtl, fos, sli chky, p-f int xtl & int frag por, spdt-sli sat stn, SSFO, f odor, dull-f fluor Sh red-gry Sh red-gm-gry Ls crm-tan, vfn xtl, chty, dnse Sh red-gm-gry, silty Ls lt gry-gry, vfn xtl, sli fos, sli chky, dnse Ls crm-t gry, vfn xtl, dnse Sh gm-gry-blk Ls crm-tan, vfn xtl, dnse Ls crm-tan, vfn xtl, chty, dnse Sh blk, carb	Pawnee 4247 (-1357)
4153		Ls crm-t gry, fn xtl, fos, sli chky, p-f int xtl-pp por, NS Ls crm-tan-gry, vfn xtl, chty, dnse Ls crm-tan-gry, vfn xtl, chty, dnse Sh blk, carb Ls crm-t gry, vfn xtl, dnse Ls lt gry-tan, fos, sli chky, dnse Sh blk, carb Ls crm-tan, vfn xtl, chty, dnse	Fort Scott 4306 (-1416)
4247		Sh blk, carb Ls crm-t gry, fn xtl, fos, sli chky, p-f int xtl-pp por, NS Ls crm-tan, vfn xtl, ool in prt, sli chky, dnse Sh blk, carb Ls tan-gry, mic xtl, dnse Ls crm-t gry, mic xtl, dnse Sh gry-gm-red	Cherokee Shale 4396 (-1446)
4306		Sh blk, carb Ls crm-t gry, fn xtl, fos, sli chky, p-f int xtl-pp por, spdt blk stn on several pcs, VSSFO, vsil odor, no fluor Ls tan-gry, mic xtl, dnse Sh blk, carb, w/int bed tan-gry dnse Ls Ls crm-t gry, mic xtl, dnse Sh gry-gm-red	Johnson Zone 4380 (-1490)
4380		Ls crm-t gry, vfn xtl, sli fos, sli chky, no vis por Ls tan-gry, mic xtl, sli fos, sli chty, dnse Ls crm-tan, vfn xtl, sli fos, sli chky, w/fos cht Ls crm-tan, vfn xtl, sli fos, sli chky, w/fos cht SS clear-wh, fn grn, sub rnd, well cement, sli fric, NS Ls tan-gry, vfn xtl, dnse Sh blk, carb Sh gry-gm-blk, carb SS crm-tan, fn grn, sub rnd, well cement, sli fric, NS SS clear, fn-med loose grms, few floating oil beads, 1 cluster sat in oil, sli odor, no fluor	Mississippian 4472 (-1582)
4472		Ls crm, vfn xtl, sandy, dnse Ls crm-tan, vfn xtl, sandy Ls crm-tan, vfn xtl, sandy, sli chky, dnse Ls crm-t gry, vfn xtl, sli sandy, dnse Ls crm-t gry, vfn xtl, sli sandy, dnse	Total Depth 4550' (-1660)