



## DRILL STEM TEST REPORT

Prepared For: **FIML Natural Resources, LLC**

410 17th St. STE 900  
Denver, CO 80202

ATTN: Jim Musgrove

### **Burnett #3-15-2027**

#### **15-20s-27w Lane KS**

Start Date: 2012.09.14 @ 13:05:00

End Date: 2012.09.14 @ 21:56:00

Job Ticket #: 48446                      DST #: 1

Trilobite Testing, Inc  
PO Box 362 Hays, KS 67601  
ph: 785-625-4778 fax: 785-625-5620

Printed: 2012.09.17 @ 15:06:15



**TRILOBITE  
TESTING, INC.**

# DRILL STEM TEST REPORT

FIML Natural Resources, LLC

**15-20s-27w Lane KS**

410 17th St. STE 900  
Denver, CO 80202

**Burnett #3-15-2027**

ATTN: Jim Musgrove

Job Ticket: 48446

**DST#: 1**

Test Start: 2012.09.14 @ 13:05:00

## GENERAL INFORMATION:

Formation: **LKC I-J**

Deviated: No Whipstock: ft (KB)

Time Tool Opened: 15:40:15

Time Test Ended: 21:56:00

Test Type: Conventional Bottom Hole (Initial)

Tester: Bradley Walter

Unit No: 53

**Interval: 4170.00 ft (KB) To 4220.00 ft (KB) (TVD)**

Reference Elevations: 2233.00 ft (KB)

Total Depth: 4220.00 ft (KB) (TVD)

2223.00 ft (CF)

Hole Diameter: 7.88 inches Hole Condition: Good

KB to GR/CF: 10.00 ft

**Serial #: 8522 Outside**

Press @ Run Depth: 247.23 psig @ 4171.00 ft (KB)

Capacity: 8000.00 psig

Start Date: 2012.09.14

End Date:

2012.09.14

Last Calib.: 2012.09.14

Start Time: 13:05:05

End Time:

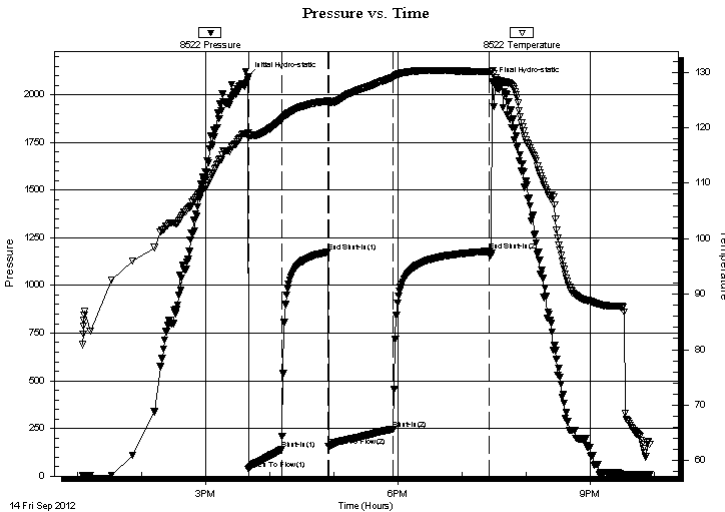
21:56:00

Time On Btm: 2012.09.14 @ 15:40:00

Time Off Btm: 2012.09.14 @ 19:28:45

**TEST COMMENT:** IF: BOB @ 14 min.  
IS: 1 1/2" return.  
FF: BOB @ 20 min.  
FS: 3" return.

## PRESSURE SUMMARY



Time (Min.)	Pressure (psig)	Temp (deg F)	Annotation
0	2096.35	119.09	Initial Hydro-static
1	35.69	118.47	Open To Flow (1)
32	142.12	121.46	Shut-In(1)
75	1175.30	124.83	End Shut-In(1)
76	155.43	124.46	Open To Flow (2)
136	247.23	129.08	Shut-In(2)
226	1179.55	130.09	End Shut-In(2)
229	2070.01	130.34	Final Hydro-static

## Recovery

Length (ft)	Description	Volume (bbl)
190.00	mcw 10m 90w (oil spots)	0.93
230.00	gsomcw 15g 10o 15m 60w	1.61
90.00	go 30g 70o	1.26
0.00	430' GIP	0.00

## Gas Rates

	Choke (inches)	Pressure (psig)	Gas Rate (Mcf/d)





**TRILOBITE  
TESTING, INC.**

# DRILL STEM TEST REPORT

**TOOL DIAGRAM**

FIML Natural Resources, LLC

**15-20s-27w Lane KS**

410 17th St. STE 900  
Denver, CO 80202

**Burnett #3-15-2027**

Job Ticket: 48446

**DST#: 1**

ATTN: Jim Musgrove

Test Start: 2012.09.14 @ 13:05:00

## Tool Information

Drill Pipe:	Length: 3795.00 ft	Diameter: 3.80 inches	Volume: 53.23 bbl	Tool Weight: 2000.00 lb
Heavy Wt. Pipe:	Length: 0.00 ft	Diameter: 0.00 inches	Volume: 0.00 bbl	Weight set on Packer: 25000.00 lb
Drill Collar:	Length: 367.00 ft	Diameter: 2.25 inches	Volume: 1.80 bbl	Weight to Pull Loose: 80000.00 lb
			<u>Total Volume: 55.03 bbl</u>	Tool Chased 0.00 ft
Drill Pipe Above KB:	12.00 ft			String Weight: Initial 68000.00 lb
Depth to Top Packer:	4170.00 ft			Final 70000.00 lb
Depth to Bottom Packer:	ft			
Interval between Packers:	50.00 ft			
Tool Length:	70.00 ft			
Number of Packers:	2	Diameter: 6.75 inches		

Tool Comments:

Tool Description	Length (ft)	Serial No.	Position	Depth (ft)	Accum. Lengths
------------------	-------------	------------	----------	------------	----------------

Change Over Sub	1.00			4151.00	
Shut In Tool	5.00			4156.00	
Hydraulic tool	5.00			4161.00	
Packer	5.00			4166.00	20.00 Bottom Of Top Packer
Packer	4.00			4170.00	
Stubb	1.00			4171.00	
Recorder	0.00	8677	Inside	4171.00	
Recorder	0.00	8522	Outside	4171.00	
Perforations	12.00			4183.00	
Change Over Sub	1.00			4184.00	
Drill Pipe	32.00			4216.00	
Change Over Sub	1.00			4217.00	
Bullnose	3.00			4220.00	50.00 Bottom Packers & Anchor

**Total Tool Length: 70.00**



**TRILOBITE  
TESTING, INC.**

# DRILL STEM TEST REPORT

**FLUID SUMMARY**

FIML Natural Resources, LLC

**15-20s-27w Lane KS**

410 17th St. STE 900  
Denver, CO 80202

**Burnett #3-15-2027**

Job Ticket: 48446

**DST#: 1**

ATTN: Jim Musgrove

Test Start: 2012.09.14 @ 13:05:00

## Mud and Cushion Information

Mud Type: Gel Chem

Cushion Type:

Oil API:

36 deg API

Mud Weight: 9.00 lb/gal

Cushion Length:

ft

Water Salinity:

65000 ppm

Viscosity: 50.00 sec/qt

Cushion Volume:

bbbl

Water Loss: 7.97 in<sup>3</sup>

Gas Cushion Type:

Resistivity: ohm.m

Gas Cushion Pressure:

psig

Salinity: 3900.00 ppm

Filter Cake: 1.00 inches

## Recovery Information

Recovery Table

Length ft	Description	Volume bbl
190.00	mcw 10m 90w (oil spots)	0.934
230.00	gsomcw 15g 10o 15m 60w	1.614
90.00	go 30g 70o	1.262
0.00	430' GIP	0.000

Total Length: 510.00 ft      Total Volume: 3.810 bbl

Num Fluid Samples: 0

Num Gas Bombs: 0

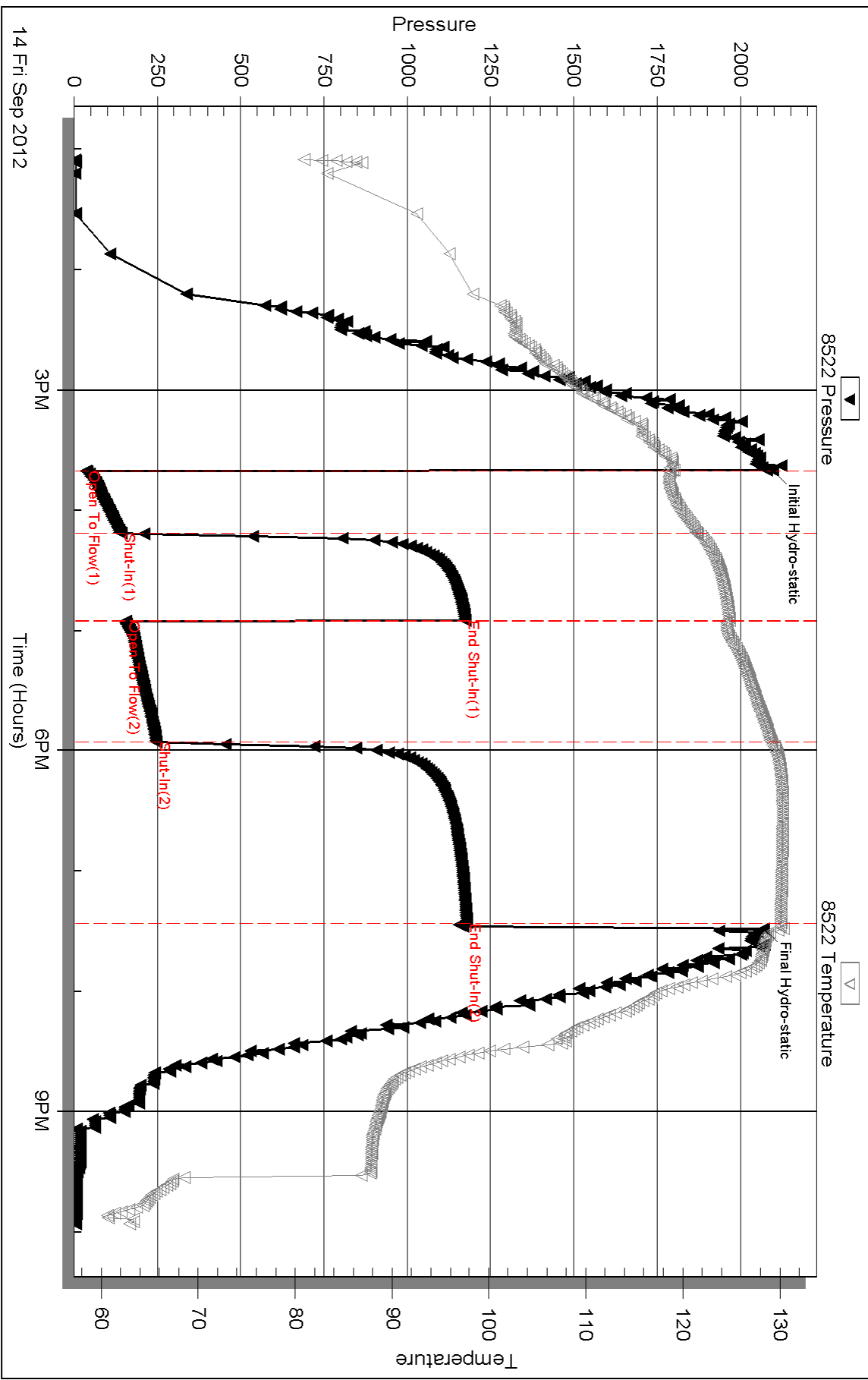
Serial #:

Laboratory Name:

Laboratory Location:

Recovery Comments: rw is .120 @ 67F = 65,000ppm

# Pressure vs. Time



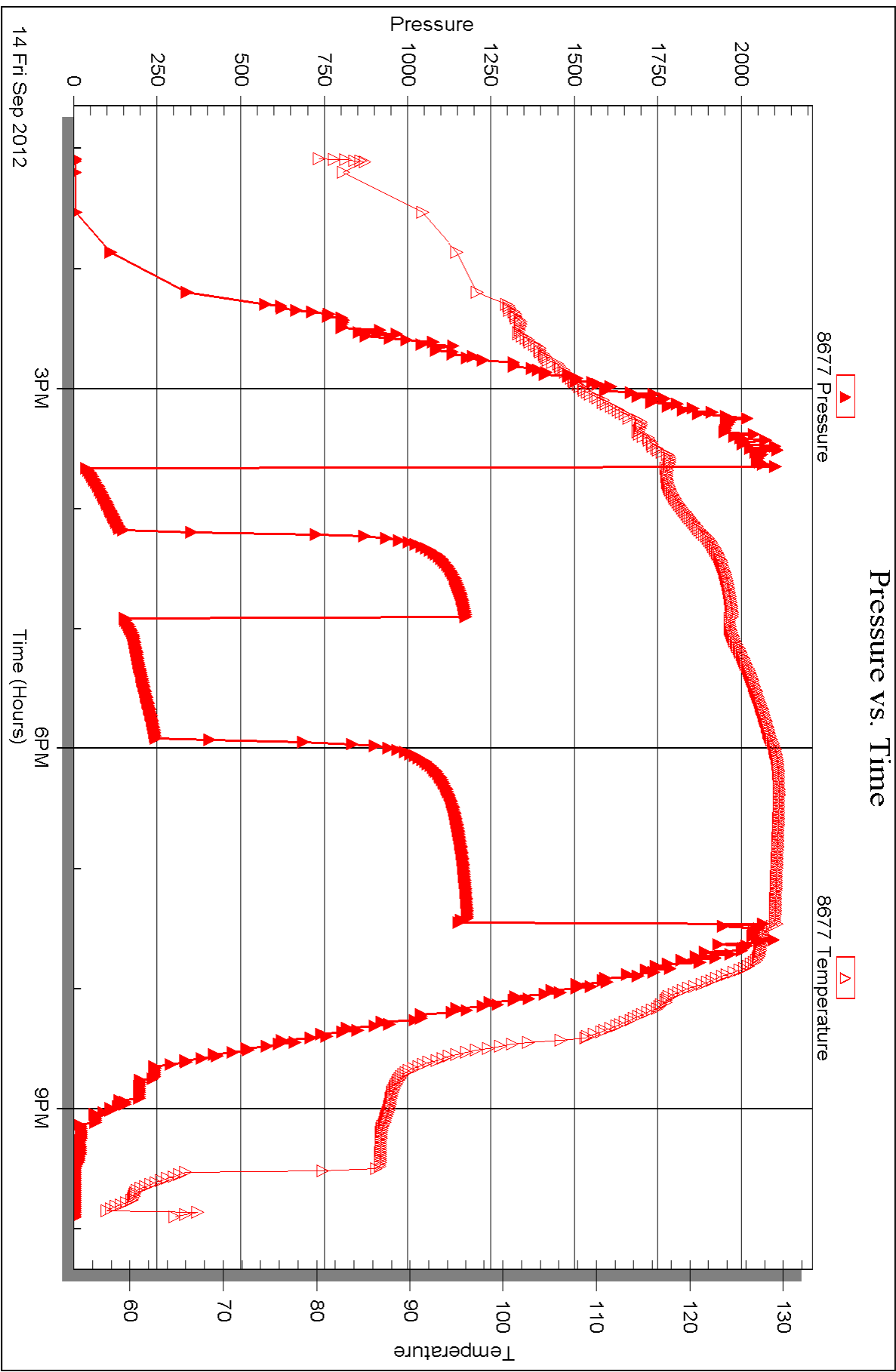
Serial #: 8677

Inside

FIML Natural Resources, LLC

Burnett #3-15-2027

DST Test Number: 1





## DRILL STEM TEST REPORT

Prepared For: **FIML Natural Resources, LLC**

410 17th St. STE 900  
Denver, CO 80202

ATTN: Jim Musgrove

### **Burnett #3-15-2027**

### **15-20s-27w Lane KS**

Start Date: 2012.09.16 @ 07:43:00

End Date: 2012.09.16 @ 16:37:15

Job Ticket #: 48447                      DST #: 2

Trilobite Testing, Inc  
PO Box 362 Hays, KS 67601  
ph: 785-625-4778 fax: 785-625-5620

Printed: 2012.09.17 @ 15:05:31





**TRILOBITE TESTING, INC.**

# DRILL STEM TEST REPORT

FIML Natural Resources, LLC

**15-20s-27w Lane KS**

410 17th St. STE 900  
Denver, CO 80202

**Burnett #3-15-2027**

ATTN: Jim Musgrove

Job Ticket: 48447

**DST#: 2**

Test Start: 2012.09.16 @ 07:43:00

## GENERAL INFORMATION:

Formation: **Osage**

Deviated: No Whipstock: ft (KB)

Time Tool Opened: 10:10:30

Time Test Ended: 16:37:15

Test Type: Conventional Bottom Hole (Reset)

Tester: Bradley Walter

Unit No: 53

**Interval: 4460.00 ft (KB) To 4520.00 ft (KB) (TVD)**

Reference Elevations: 2233.00 ft (KB)

Total Depth: 4520.00 ft (KB) (TVD)

2223.00 ft (CF)

Hole Diameter: 7.88 inches Hole Condition: Good

KB to GR/CF: 10.00 ft

**Serial #: 8522 Outside**

Press @ Run Depth: 327.02 psig @ 4461.00 ft (KB)

Capacity: 8000.00 psig

Start Date: 2012.09.16

End Date:

2012.09.16

Last Calib.:

2012.09.16

Start Time:

07:43:05

End Time:

16:37:15

Time On Btm:

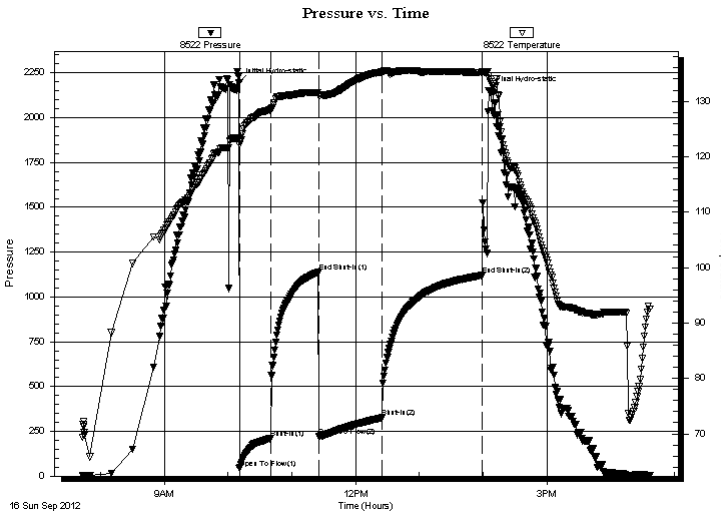
2012.09.16 @ 10:10:15

Time Off Btm:

2012.09.16 @ 14:05:15

**TEST COMMENT:** IF: BOB @ 10 min.  
IS: Surface return.  
FF: BOB @ 12 min.  
FS: Surface return, died @ 45 min.

## PRESSURE SUMMARY



Time (Min.)	Pressure (psig)	Temp (deg F)	Annotation
0	2197.50	123.37	Initial Hydro-static
1	44.88	122.15	Open To Flow (1)
30	212.63	128.52	Shut-In(1)
75	1138.04	131.57	End Shut-In(1)
75	220.72	131.02	Open To Flow (2)
135	327.02	135.32	Shut-In(2)
229	1120.33	135.17	End Shut-In(2)
235	2153.16	134.60	Final Hydro-static

## Recovery

Length (ft)	Description	Volume (bbl)
40.00	mco 40m 60o	0.20
780.00	gsmco 10g 5m 85o	7.96
0.00	no Gas detected by sight or smell	0.00

\* Recovery from multiple tests

## Gas Rates

	Choke (inches)	Pressure (psig)	Gas Rate (Mcf/d)





**TRILOBITE  
TESTING, INC.**

# DRILL STEM TEST REPORT

**TOOL DIAGRAM**

FIML Natural Resources, LLC

**15-20s-27w Lane KS**

410 17th St. STE 900  
Denver, CO 80202

**Burnett #3-15-2027**

Job Ticket: 48447

**DST#: 2**

ATTN: Jim Musgrove

Test Start: 2012.09.16 @ 07:43:00

## Tool Information

Drill Pipe:	Length: 4103.00 ft	Diameter: 3.80 inches	Volume: 57.55 bbl	Tool Weight: 2000.00 lb
Heavy Wt. Pipe:	Length: 0.00 ft	Diameter: 0.00 inches	Volume: 0.00 bbl	Weight set on Packer: 25000.00 lb
Drill Collar:	Length: 367.00 ft	Diameter: 2.25 inches	Volume: 1.80 bbl	Weight to Pull Loose: 85000.00 lb
			<u>Total Volume: 59.35 bbl</u>	Tool Chased 0.00 ft
Drill Pipe Above KB:	30.00 ft			String Weight: Initial 70000.00 lb
Depth to Top Packer:	4460.00 ft			Final 73000.00 lb
Depth to Bottom Packer:	ft			
Interval between Packers:	60.00 ft			
Tool Length:	80.00 ft			
Number of Packers:	2	Diameter: 6.75 inches		

Tool Comments:

## Tool Description

Tool Description	Length (ft)	Serial No.	Position	Depth (ft)	Accum. Lengths
Change Over Sub	1.00			4441.00	
Shut In Tool	5.00			4446.00	
Hydraulic tool	5.00			4451.00	
Packer	5.00			4456.00	20.00 Bottom Of Top Packer
Packer	4.00			4460.00	
Stubb	1.00			4461.00	
Recorder	0.00	8677	Inside	4461.00	
Recorder	0.00	8522	Outside	4461.00	
Perforations	22.00			4483.00	
Change Over Sub	1.00			4484.00	
Drill Pipe	32.00			4516.00	
Change Over Sub	1.00			4517.00	
Bullnose	3.00			4520.00	60.00 Bottom Packers & Anchor

**Total Tool Length: 80.00**



**TRILOBITE  
TESTING, INC.**

# DRILL STEM TEST REPORT

**FLUID SUMMARY**

FIML Natural Resources, LLC

**15-20s-27w Lane KS**

410 17th St. STE 900  
Denver, CO 80202

**Burnett #3-15-2027**

Job Ticket: 48447

**DST#: 2**

ATTN: Jim Musgrove

Test Start: 2012.09.16 @ 07:43:00

## Mud and Cushion Information

Mud Type: Gel Chem

Cushion Type:

Oil API:

36 deg API

Mud Weight: 9.00 lb/gal

Cushion Length:

ft

Water Salinity:

0 ppm

Viscosity: 55.00 sec/qt

Cushion Volume:

bbbl

Water Loss: 8.38 in<sup>3</sup>

Gas Cushion Type:

Resistivity: ohm.m

Gas Cushion Pressure:

psig

Salinity: 4200.00 ppm

Filter Cake: 1.00 inches

## Recovery Information

Recovery Table

Length ft	Description	Volume bbbl
40.00	mco 40m 60o	0.197
780.00	gsmco 10g 5m 85o	7.963
0.00	no Gas detected by sight or smell	0.000

Total Length: 820.00 ft

Total Volume: 8.160 bbl

Num Fluid Samples: 0

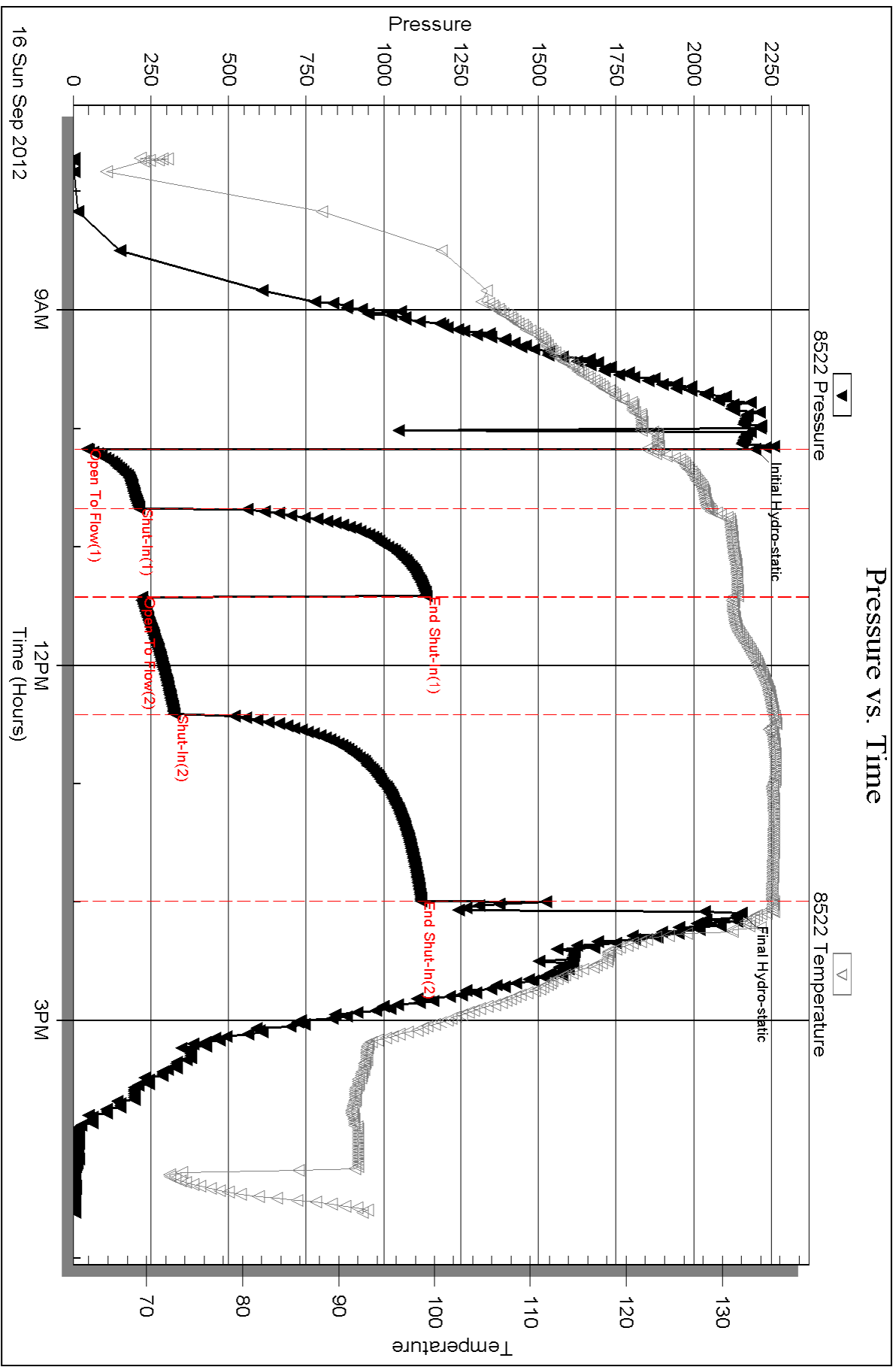
Num Gas Bombs: 0

Serial #:

Laboratory Name:

Laboratory Location:

Recovery Comments:



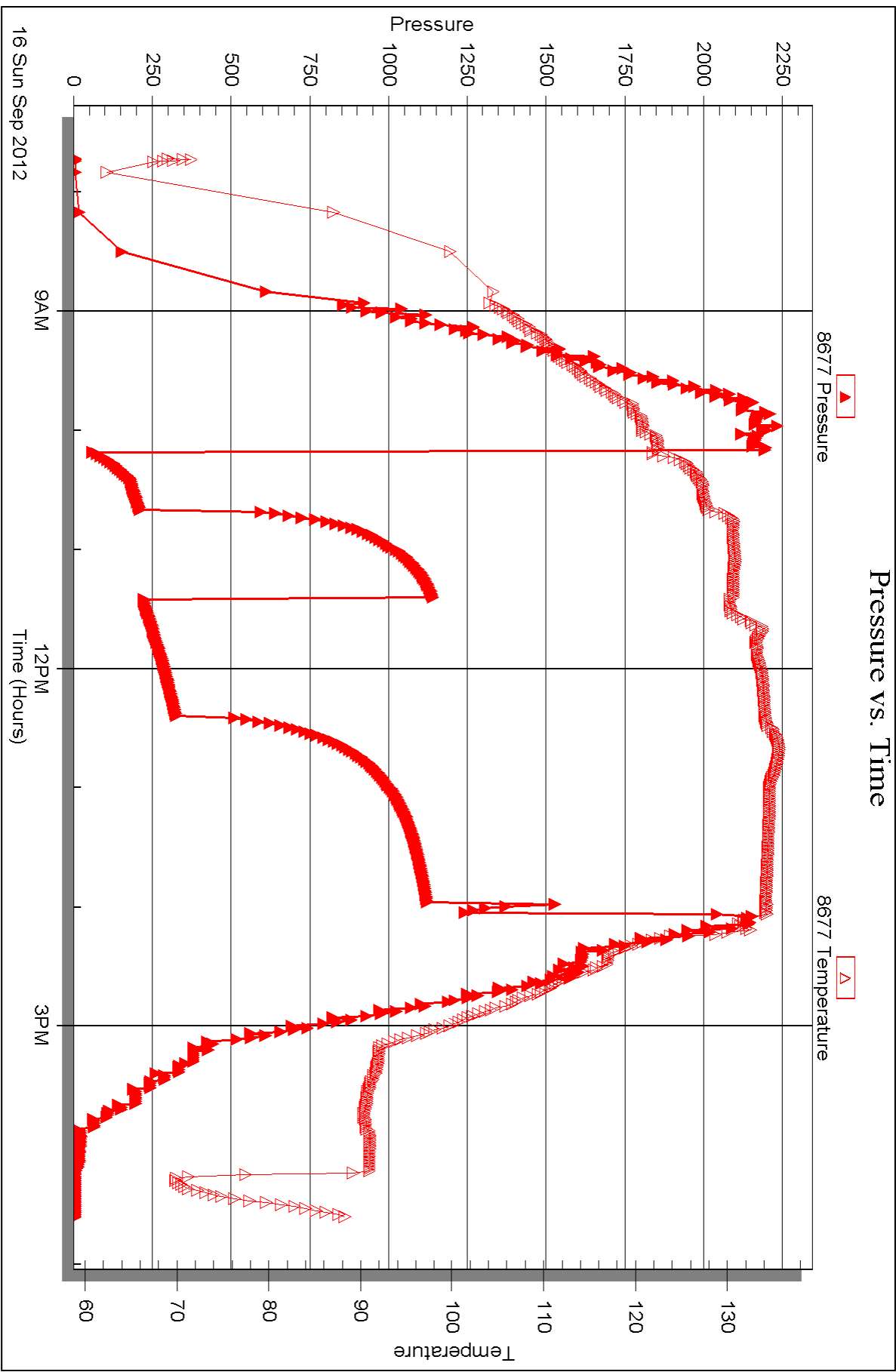
Serial #: 8677

Inside

FIML Natural Resources, LLC

Burnett #3-15-2027

DST Test Number: 2





## DRILL STEM TEST REPORT

Prepared For: **FIML Natural Resources, LLC**

410 17th St. STE 900  
Denver, CO 80202

ATTN: Jim Musgrove

### **Burnett #3-15-2027**

### **15-20s-27w Lane KS**

Start Date: 2012.09.16 @ 22:16:00

End Date: 2012.09.17 @ 07:30:00

Job Ticket #: 48448                      DST #: 3

Trilobite Testing, Inc  
PO Box 362 Hays, KS 67601  
ph: 785-625-4778 fax: 785-625-5620

Printed: 2012.09.17 @ 15:04:41



**TRILOBITE  
TESTING, INC.**

# DRILL STEM TEST REPORT

FIML Natural Resources, LLC

**15-20s-27w Lane KS**

410 17th St. STE 900  
Denver, CO 80202

**Burnett #3-15-2027**

ATTN: Jim Musgrove

Job Ticket: 48448

**DST#: 3**

Test Start: 2012.09.16 @ 22:16:00

## GENERAL INFORMATION:

Formation: **Osage**

Deviated: No Whipstock: ft (KB)

Time Tool Opened: 00:48:00

Time Test Ended: 07:30:00

Test Type: Conventional Bottom Hole (Reset)

Tester: Bradley Walter

Unit No: 53

**Interval: 4520.00 ft (KB) To 4540.00 ft (KB) (TVD)**

Reference Elevations: 2233.00 ft (KB)

Total Depth: 4520.00 ft (KB) (TVD)

2223.00 ft (CF)

Hole Diameter: 7.88 inches Hole Condition: Good

KB to GR/CF: 10.00 ft

**Serial #: 8522 Outside**

Press @ Run Depth: 374.88 psig @ 4521.00 ft (KB)

Capacity: 8000.00 psig

Start Date: 2012.09.16

End Date:

2012.09.17

Last Calib.:

2012.09.17

Start Time: 22:16:05

End Time:

07:30:00

Time On Btm:

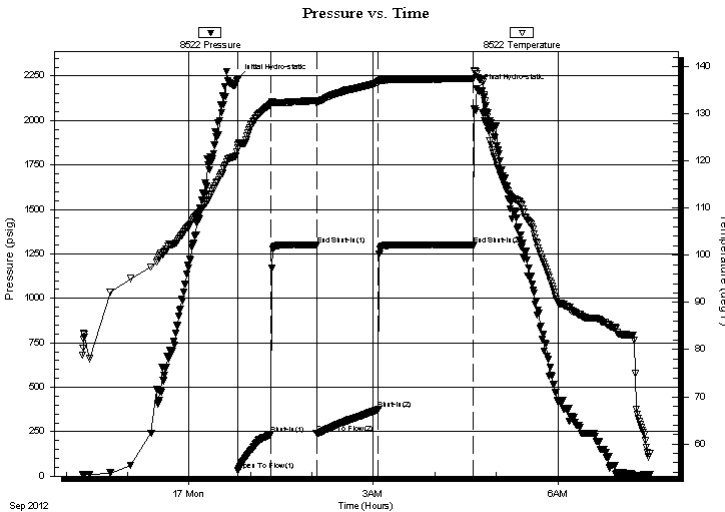
2012.09.17 @ 00:47:45

Time Off Btm:

2012.09.17 @ 04:40:45

**TEST COMMENT:** IF: BOB @ 10 min.  
IS: surface blow.  
FF: BOB @ 10 min.  
FS: Surface blow.

## PRESSURE SUMMARY



Time (Min.)	Pressure (psig)	Temp (deg F)	Annotation
0	2234.89	123.46	Initial Hydro-static
1	33.97	122.83	Open To Flow (1)
33	236.23	132.07	Shut-In(1)
77	1301.87	132.80	End Shut-In(1)
77	239.55	132.22	Open To Flow (2)
137	374.88	136.71	Shut-In(2)
230	1301.63	137.49	End Shut-In(2)
233	2179.79	138.50	Final Hydro-static

## Recovery

Length (ft)	Description	Volume (bbl)
180.00	w mco 30w 30m 400	0.89
730.00	go 20g 80o	7.69
0.00	110' GIP	0.00

## Gas Rates

	Choke (inches)	Pressure (psig)	Gas Rate (Mcf/d)

\* Recovery from multiple tests







**TRILOBITE  
TESTING, INC.**

# DRILL STEM TEST REPORT

**TOOL DIAGRAM**

FIML Natural Resources, LLC

**15-20s-27w Lane KS**

410 17th St. STE 900  
Denver, CO 80202

**Burnett #3-15-2027**

ATTN: Jim Musgrove

Job Ticket: 48448

**DST#: 3**

Test Start: 2012.09.16 @ 22:16:00

## Tool Information

Drill Pipe:	Length: 4047.00 ft	Diameter: 3.80 inches	Volume: 56.77 bbl	Tool Weight: 2000.00 lb
Heavy Wt. Pipe:	Length: 0.00 ft	Diameter: 0.00 inches	Volume: 0.00 bbl	Weight set on Packer: 25000.00 lb
Drill Collar:	Length: 460.00 ft	Diameter: 2.25 inches	Volume: 2.26 bbl	Weight to Pull Loose: 90000.00 lb
			<u>Total Volume: 59.03 bbl</u>	Tool Chased 0.00 ft
Drill Pipe Above KB:	7.00 ft			String Weight: Initial 77000.00 lb
Depth to Top Packer:	4520.00 ft			Final 79000.00 lb
Depth to Bottom Packer:	ft			
Interval between Packers:	20.00 ft			
Tool Length:	40.00 ft			
Number of Packers:	2	Diameter: 6.75 inches		

Tool Comments:

## Tool Description

Tool Description	Length (ft)	Serial No.	Position	Depth (ft)	Accum. Lengths
Change Over Sub	1.00			4501.00	
Shut In Tool	5.00			4506.00	
Hydraulic tool	5.00			4511.00	
Packer	5.00			4516.00	20.00 Bottom Of Top Packer
Packer	4.00			4520.00	
Stubb	1.00			4521.00	
Recorder	0.00	8677	Inside	4521.00	
Recorder	0.00	8522	Outside	4521.00	
Perforations	16.00			4537.00	
Bullnose	3.00			4540.00	20.00 Bottom Packers & Anchor
<b>Total Tool Length:</b>	<b>40.00</b>				



**TRILOBITE  
TESTING, INC.**

# DRILL STEM TEST REPORT

**FLUID SUMMARY**

FIML Natural Resources, LLC

**15-20s-27w Lane KS**

410 17th St. STE 900  
Denver, CO 80202

**Burnett #3-15-2027**

Job Ticket: 48448

**DST#: 3**

ATTN: Jim Musgrove

Test Start: 2012.09.16 @ 22:16:00

## Mud and Cushion Information

Mud Type: Gel Chem

Cushion Type:

Oil API:

35 deg API

Mud Weight: 9.00 lb/gal

Cushion Length:

ft

Water Salinity:

0 ppm

Viscosity: 55.00 sec/qt

Cushion Volume:

bbbl

Water Loss: 7.98 in<sup>3</sup>

Gas Cushion Type:

Resistivity: ohm.m

Gas Cushion Pressure:

psig

Salinity: 3100.00 ppm

Filter Cake: 1.00 inches

## Recovery Information

Recovery Table

Length ft	Description	Volume bbbl
180.00	w mco 30w 30m 400	0.885
730.00	go 20g 80o	7.689
0.00	110' GIP	0.000

Total Length: 910.00 ft      Total Volume: 8.574 bbl

Num Fluid Samples: 0

Num Gas Bombs: 0

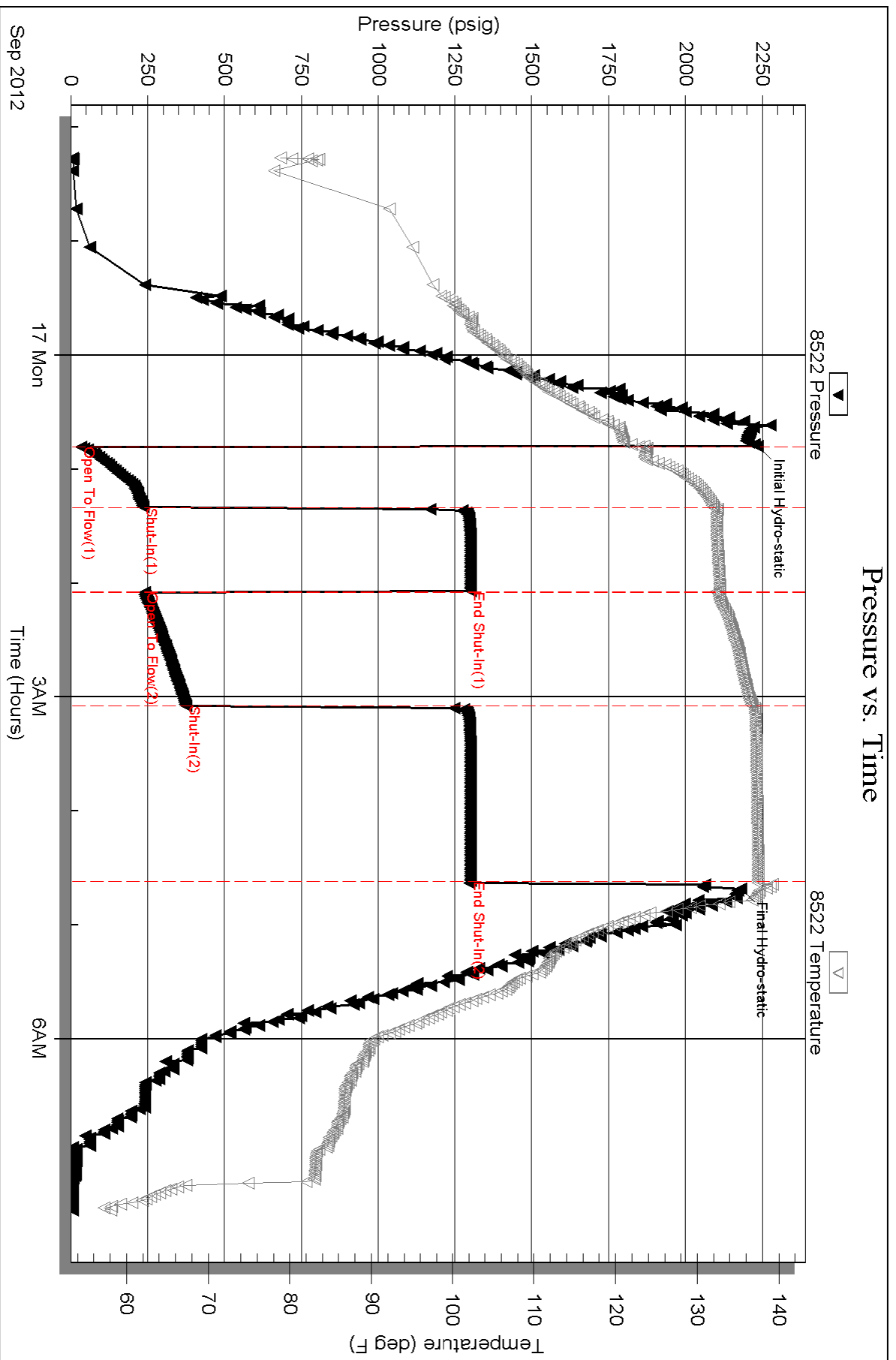
Serial #:

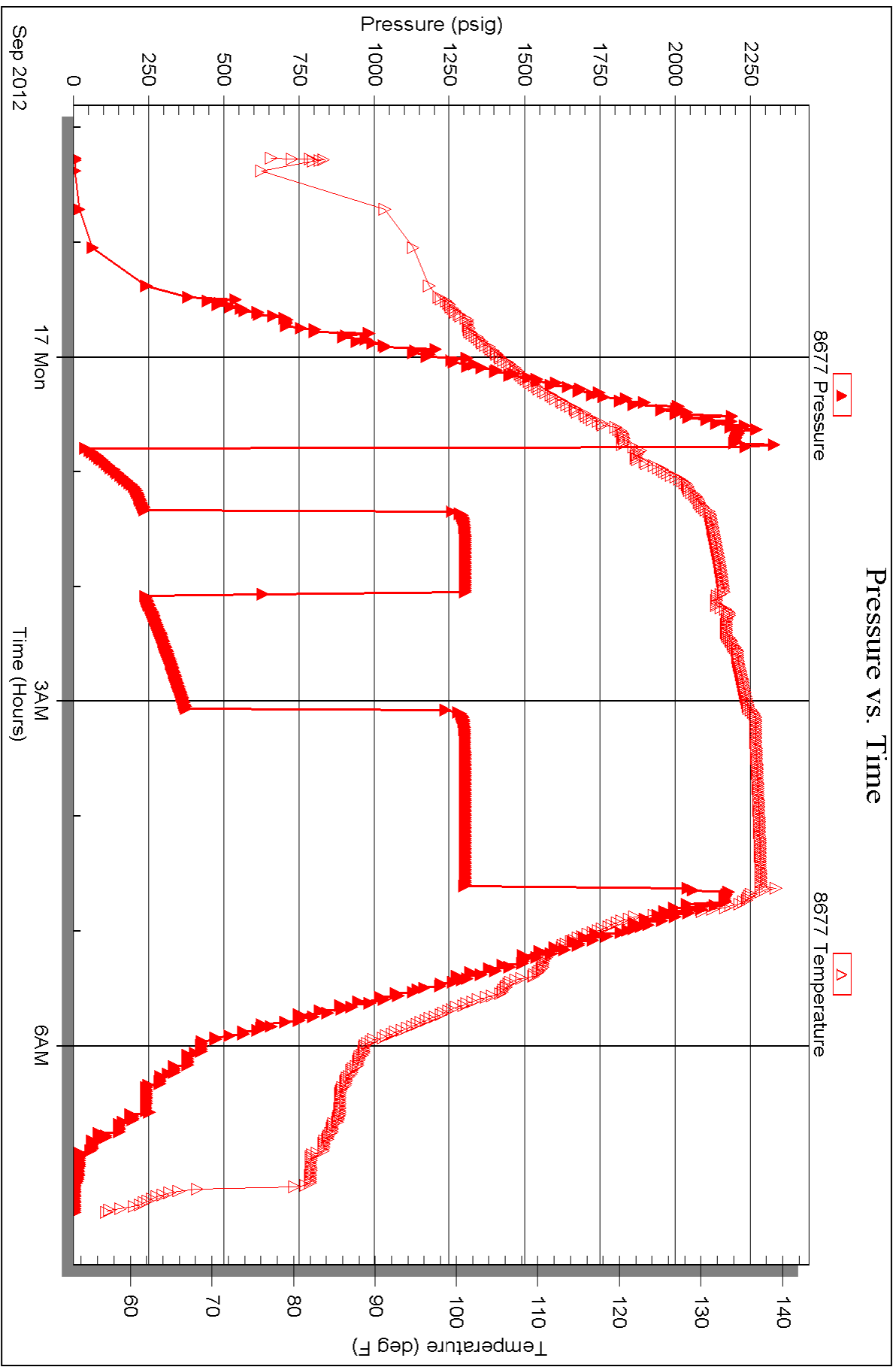
Laboratory Name:

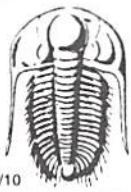
Laboratory Location:

Recovery Comments:

### Pressure vs. Time







# TRILOBITE TESTING INC.

P.O. Box 1733 • Hays, Kansas 67601

## Test Ticket

NO. 48446

Well Name & No. Burnett 3-15-2027 Test No. 1 Date 9/14/12  
 Company FIML Natural Resources, LLC Elevation 2233 KB 2223 GL  
 Address 410 17<sup>th</sup> St. STE 900 Denver, Co 80202  
 Co. Rep / Geo. Gary Duke Rig 412 #1  
 Location: Sec. 15 Twp. 20 S Rge. 27W Co. Lane State Kc

Interval Tested 4170 - 4220 Zone Tested LKC "I-5"  
 Anchor Length 50 Drill Pipe Run 3795 Mud Wt. 9.2  
 Top Packer Depth 4165 Drill Collars Run 367 Vis 50  
 Bottom Packer Depth 4170 Wt. Pipe Run 0 WL 8.0  
 Total Depth 4220 Chlorides 3900 ppm System LCM 2<sup>#</sup>

Blow Description IF: BOB@ 14 min.  
ISJ: 1 1/2" return.  
FF: BOB@ 20 min.  
FSI: 3" return.

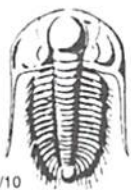
Rec	Feet of	%gas	%oil	%water	%mud
<u>90</u>	<u>60</u>	<u>30</u>	<u>30</u>		
<u>230</u>	<u><del>60mcw</del> 60mcw</u>	<u>15</u>	<u>10</u>	<u>60</u>	<u>15</u>
<u>190</u>	<u>mcw</u>			<u>90</u>	<u>10</u>
<u>430</u>	<u>GID</u>				

Rec Total 510 BHT 131 Gravity 36 API RW .120 @ 67 °F Chlorides 65,000 ppm

(A) Initial Hydrostatic 2094  Test 1250 T-On Location 1295  
 (B) First Initial Flow 36  Jars T-Started 1305  
 (C) First Final Flow 142  Safety Joint T-Open 1541  
 (D) Initial Shut-In 1175  Circ Sub 4 T-Pulled 1926  
 (E) Second Initial Flow 155  Hourly Standby T-Out 2155  
 (F) Second Final Flow 247  Mileage 88 RT 136.40 Comments \_\_\_\_\_  
 (G) Final Shut-In 1180  Sampler \_\_\_\_\_  
 (H) Final Hydrostatic 2070  Straddle \_\_\_\_\_  Ruined Shale Packer \_\_\_\_\_  
 Shale Packer \_\_\_\_\_  Ruined Packer \_\_\_\_\_  
 Extra Packer \_\_\_\_\_  Extra Copies \_\_\_\_\_  
 Initial Open 30  Extra Recorder \_\_\_\_\_ Sub Total 0  
 Initial Shut-In 45  Day Standby \_\_\_\_\_ Total 1536.40  
 Final Flow 60  Accessibility 150 MP/DST Disc't \_\_\_\_\_  
 Final Shut-In 90 Sub Total 1536.40

Approved By [Signature] Our Representative [Signature]

Trilobite Testing Inc. shall not be liable for damaged of any kind of the property or personnel of the one for whom a test is made, or for any loss suffered or sustained, directly or indirectly, through the use of its equipment, or its statements or opinion concerning the results of any test, tools lost or damaged in the hole shall be paid for at cost by the party for whom the test is made.



# TRILOBITE TESTING INC.

P.O. Box 1733 • Hays, Kansas 67601

## Test Ticket

NO. 48447

Well Name & No. Birnett 3-15-2027 Test No. 2 Date 9/16/12  
 Company FJML Natural Resources Elevation 2233 KB 2223 GL  
 Address 410 17<sup>th</sup> st STE 900 Denver, Co 80202  
 Co. Rep / Geo. Gary Duke Rig H2 # 1  
 Location: Sec. 15 Twp. 20S Rge. 27W Co. Lane State KS

Interval Tested 4460 Zone Tested Osage  
 Anchor Length 4520 Drill Pipe Run 403 Mud Wt. 9.2  
 Top Packer Depth 4455 Drill Collars Run 367 Vis 55  
 Bottom Packer Depth 4460 Wt. Pipe Run 8 WL 8.4  
 Total Depth 4520 Chlorides 4200 ppm System LCM 2#

Blow Description IF: BOB @ 10 min  
ISI: Surface blow.  
FF: BOB @ 12 min  
FJI: Surface blow, died @ 45 min

Rec	Feet of	%gas	%oil	%water	%mud
<u>780</u>	<u>65mco</u>	<u>10</u>	<u>85</u>	<u>5</u>	
<u>40</u>	<u>mco</u>		<u>60</u>	<u>40</u>	
	<u>No GIP detected</u>				

Rec Total 820 BHT 136 Gravity 36 API RW — @ — °F Chlorides — ppm

(A) Initial Hydrostatic 2198  Test 1250 T-On Location 0730  
 (B) First Initial Flow 45  Jars \_\_\_\_\_ T-Started 0742  
 (C) First Final Flow 213  Safety Joint \_\_\_\_\_ T-Open 1011  
 (D) Initial Shut-In 1138  Circ Sub W/C T-Pulled 1354  
 (E) Second Initial Flow 221  Hourly Standby \_\_\_\_\_ T-Out 1636  
 (F) Second Final Flow 327  Mileage 88 136.40 Comments \_\_\_\_\_  
 (G) Final Shut-In 1120  Sampler \_\_\_\_\_  
 (H) Final Hydrostatic 2153  Straddle \_\_\_\_\_  Ruined Shale Packer \_\_\_\_\_

Initial Open 30  Shale Packer \_\_\_\_\_  Ruined Packer \_\_\_\_\_  
 Initial Shut-In 45  Extra Packer \_\_\_\_\_  Extra Copies \_\_\_\_\_  
 Final Flow 60  Extra Recorder \_\_\_\_\_ Sub Total 0  
 Final Shut-In 90  Day Standby \_\_\_\_\_ Total 1536.40  
 Accessibility 150 MP/DST Disc't \_\_\_\_\_  
 Sub Total 1536.40

Approved By [Signature] Our Representative [Signature]

TriLOBite Testing Inc. shall not be liable for damaged of any kind of the property or personnel of the one for whom a test is made, or for any loss suffered or sustained, directly or indirectly, through the use of its equipment, or its statements or opinion concerning the results of any test, tools lost or damaged in the hole shall be paid for at cost by the party for whom the test is made.



# TRILOBITE TESTING INC.

P.O. Box 1733 • Hays, Kansas 67601

## Test Ticket

NO. 48448

Well Name & No. Burnett 3-15-2027 Test No. 3 Date 9/17/12  
 Company FIML Natural Resources Elevation 2233 KB 2223 GL  
 Address 410 17<sup>th</sup> St STE 900 Denver, Co 80202  
 Co. Rep / Geo. Gary Doke Rig H2 #1  
 Location: Sec. 15 Twp. 20s Rge. 27w Co. Lane State Ks

Interval Tested 4520 - 4540 Zone Tested Osage  
 Anchor Length 20' Drill Pipe Run 4047 Mud Wt. 9.3  
 Top Packer Depth 4515 Drill Collars Run 460 Vis 55  
 Bottom Packer Depth 4520 Wt. Pipe Run 8 WL 8.0  
 Total Depth 4540 Chlorides 3100 ppm System LCM 2 #  
 Blow Description IF: BOB @ 10 min.  
IST: Surface blow  
FF: BOB @ 10 min.  
FSI: Surface blow.

Rec	Feet of	%gas	%oil	%water	%mud
<u>730</u>	<u>GO</u>	<u>20</u>	<u>80</u>		
<u>180</u>	<u>WMCD</u>		<u>40</u>	<u>30</u>	<u>30</u>
	<u>110' Gassy Oiler</u>				

Rec Total 910 BHT 139 Gravity 35 API RW - @ - °F Chlorides - ppm

(A) Initial Hydrostatic 2235  Test 1250 T-On Location 2200 9/16/12  
 (B) First Initial Flow 34  Jars \_\_\_\_\_ T-Started 2216  
 (C) First Final Flow 236  Safety Joint \_\_\_\_\_ T-Open 0049 9/17/12  
 (D) Initial Shut-In 1302  Circ Sub N/C T-Pulled 0434  
 (E) Second Initial Flow 240  Hourly Standby \_\_\_\_\_ T-Out 0730  
 (F) Second Final Flow 375  Mileage 136.40 Comments \_\_\_\_\_  
 (G) Final Shut-In 1302  Sampler \_\_\_\_\_  
 (H) Final Hydrostatic 2180  Straddle \_\_\_\_\_  Ruined Shale Packer \_\_\_\_\_  
 Shale Packer \_\_\_\_\_  Ruined Packer \_\_\_\_\_  
 Extra Packer \_\_\_\_\_  Extra Copies \_\_\_\_\_  
 Initial Open 30  Extra Recorder \_\_\_\_\_ Sub Total 0  
 Initial Shut-In 45  Day Standby \_\_\_\_\_ Total 1536.40  
 Final Flow 60  Accessibility 150 MP/DST Disc't \_\_\_\_\_  
 Final Shut-In 90 Sub Total 1536.40

Approved By [Signature]

Our Representative [Signature]

TriLOBITE Testing Inc. shall not be liable for damages of any kind of the property or personnel of the one for whom a test is made, or for any loss suffered or sustained, directly or indirectly, through the use of its equipment, or its statements or opinion concerning the results of any test, tools lost or damaged in the hole shall be paid for at cost by the party for whom the test is made.