



DRILL STEM TEST REPORT

Prepared For: **Cobalt Energy, LLC.**

PO Box 8037
Wichita, KS 67208

ATTN: Robert Hendrix

Miner Unit "A" #1-27

27-18s-24w Ness,KS

Start Date: 2012.10.24 @ 19:22:30

End Date: 2012.10.25 @ 03:58:30

Job Ticket #: 47949 DST #: 1

Trilobite Testing, Inc
PO Box 362 Hays, KS 67601
ph: 785-625-4778 fax: 785-625-5620

Printed: 2012.10.31 @ 13:24:40



TRILOBITE TESTING, INC.

DRILL STEM TEST REPORT

Cobalt Energy, LLC.

27-18s-24w Ness, KS

PO Box 8037
Wichita, KS 67208

Miner Unit "A" #1-27

ATTN: Robert Hendrix

Job Ticket: 47949

DST#: 1

Test Start: 2012.10.24 @ 19:22:30

GENERAL INFORMATION:

Formation: **Ft. Scott**

Deviated: No Whipstock: ft (KB)

Time Tool Opened: 21:25:30

Time Test Ended: 03:58:30

Test Type: Conventional Bottom Hole (Initial)

Tester: Dustin Rash

Unit No: 38

Interval: 4183.00 ft (KB) To 4226.00 ft (KB) (TVD)

Reference Elevations: 2289.00 ft (KB)

Total Depth: 4226.00 ft (KB) (TVD)

2284.00 ft (CF)

Hole Diameter: 7.88 inches Hole Condition: Fair

KB to GR/CF: 5.00 ft

Serial #: 8354 Inside

Press @ Run Depth: 55.11 psig @ 4218.00 ft (KB)

Capacity: 8000.00 psig

Start Date: 2012.10.24

End Date:

2012.10.25

Last Calib.: 2012.10.25

Start Time: 19:32:30

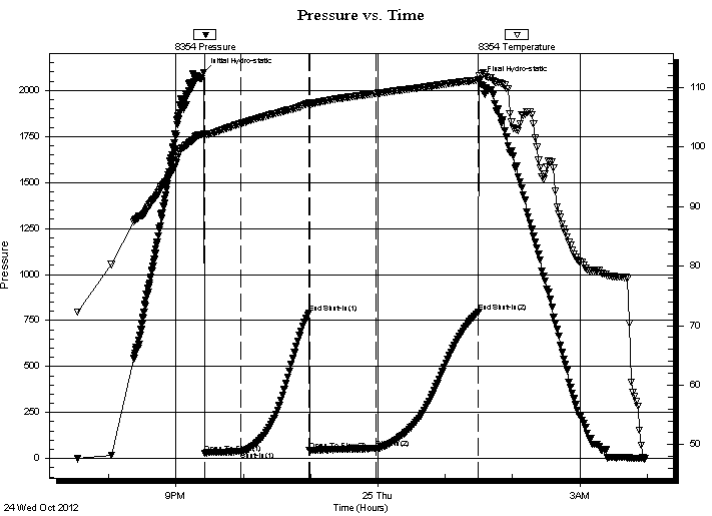
End Time:

03:58:30

Time On Btm: 2012.10.24 @ 21:25:00

Time Off Btm: 2012.10.25 @ 01:30:30

TEST COMMENT: IF-Very weak building blow . Built to 3 inches.
IS-No Return.
FF-Very weak building blow . Built to 7 inches.
FS-No Return.



PRESSURE SUMMARY

Time (Min.)	Pressure (psig)	Temp (deg F)	Annotation
0	2098.04	102.20	Initial Hydro-static
1	28.29	101.87	Open To Flow (1)
33	37.74	103.92	Shut-In(1)
94	791.93	107.34	End Shut-In(1)
94	42.86	107.05	Open To Flow (2)
154	55.11	108.98	Shut-In(2)
245	794.73	111.23	End Shut-In(2)
246	2052.43	112.03	Final Hydro-static

Recovery

Length (ft)	Description	Volume (bbl)
60.00	10%Gas/5%Oil/85%Mud	0.30

Gas Rates

	Choke (inches)	Pressure (psig)	Gas Rate (Mcf/d)



TRILOBITE TESTING, INC.

DRILL STEM TEST REPORT

Cobalt Energy, LLC.

27-18s-24w Ness, KS

PO Box 8037
Wichita, KS 67208

Miner Unit "A" #1-27

ATTN: Robert Hendrix

Job Ticket: 47949 **DST#: 1**
Test Start: 2012.10.24 @ 19:22:30

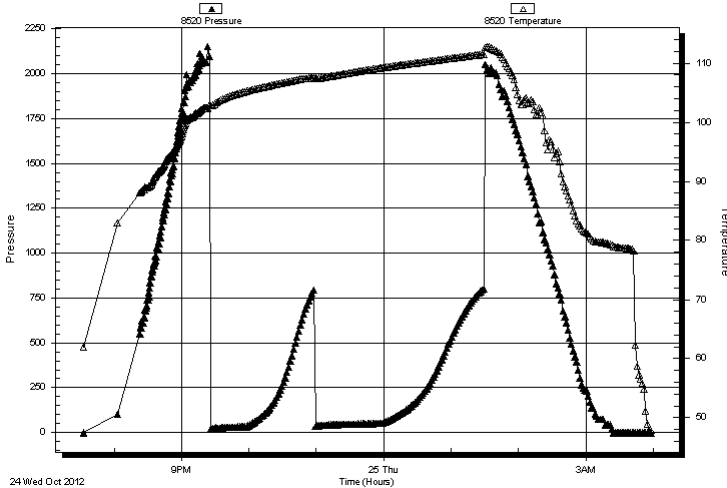
GENERAL INFORMATION:

Formation: Ft. Scott		
Deviated: No Whipstock:	ft (KB)	Test Type: Conventional Bottom Hole (Initial)
Time Tool Opened: 21:25:30		Tester: Dustin Rash
Time Test Ended: 03:58:30		Unit No: 38
Interval: 4183.00 ft (KB) To 4226.00 ft (KB) (TVD)		Reference Elevations: 2289.00 ft (KB)
Total Depth: 4226.00 ft (KB) (TVD)		2284.00 ft (CF)
Hole Diameter: 7.88 inches	Hole Condition: Fair	KB to GR/CF: 5.00 ft

Serial #: 8520	Outside		
Press @ Run Depth: psig @	4218.00 ft (KB)	Capacity:	8000.00 psig
Start Date: 2012.10.24	End Date: 2012.10.25	Last Calib.:	2012.10.25
Start Time: 19:32:45	End Time: 03:57:45	Time On Btm:	
		Time Off Btm:	

TEST COMMENT: IF-Very weak building blow . Built to 3 inches.
IS-No Return.
FF-Very weak building blow . Built to 7 inches.
FS-No Return.

Pressure vs. Time



PRESSURE SUMMARY

Time (Min.)	Pressure (psig)	Temp (deg F)	Annotation

Recovery

Length (ft)	Description	Volume (bbl)
60.00	10%Gas/5%Oil/85%Mud	0.30

Gas Rates

Choke (inches)	Pressure (psig)	Gas Rate (Mcf/d)



**TRILOBITE
TESTING, INC.**

DRILL STEM TEST REPORT

TOOL DIAGRAM

Cobalt Energy, LLC.

27-18s-24w Ness, KS

PO Box 8037
Wichita, KS 67208

Miner Unit "A" #1-27

Job Ticket: 47949

DST#: 1

ATTN: Robert Hendrix

Test Start: 2012.10.24 @ 19:22:30

Tool Information

Drill Pipe:	Length: 3980.00 ft	Diameter: 3.80 inches	Volume: 55.83 bbl	Tool Weight: 3000.00 lb
Heavy Wt. Pipe:	Length: 0.00 ft	Diameter: 2.70 inches	Volume: 0.00 bbl	Weight set on Packer: 22000.00 lb
Drill Collar:	Length: 186.00 ft	Diameter: 2.25 inches	Volume: 0.91 bbl	Weight to Pull Loose: 5000.00 lb
			<u>Total Volume: 56.74 bbl</u>	Tool Chased 0.00 ft
Drill Pipe Above KB:	11.00 ft			String Weight: Initial 50000.00 lb
Depth to Top Packer:	4183.00 ft			Final 50000.00 lb
Depth to Bottom Packer:	ft			
Interval between Packers:	43.00 ft			
Tool Length:	71.00 ft			
Number of Packers:	2	Diameter: 6.75 inches		

Tool Comments:

Tool Description

Tool Description	Length (ft)	Serial No.	Position	Depth (ft)	Accum. Lengths
Change Over Sub	1.00			4156.00	
Shut In Tool	5.00			4161.00	
Hydraulic tool	5.00			4166.00	
Jars	5.00			4171.00	
Safety Joint	3.00			4174.00	
Packer	5.00			4179.00	28.00 Bottom Of Top Packer
Packer	4.00			4183.00	
Stubb	1.00			4184.00	
Perforations	1.00			4185.00	
Change Over Sub	1.00			4186.00	
Drill Pipe	31.00			4217.00	
Change Over Sub	1.00			4218.00	
Recorder	0.00	8354	Inside	4218.00	
Recorder	0.00	8520	Outside	4218.00	
Perforations	5.00			4223.00	
Bullnose	3.00			4226.00	43.00 Bottom Packers & Anchor
Total Tool Length:	71.00				



**TRILOBITE
TESTING, INC.**

DRILL STEM TEST REPORT

FLUID SUMMARY

Cobalt Energy, LLC.

27-18s-24w Ness, KS

PO Box 8037
Wichita, KS 67208

Miner Unit "A" #1-27

Job Ticket: 47949

DST#: 1

ATTN: Robert Hendrix

Test Start: 2012.10.24 @ 19:22:30

Mud and Cushion Information

Mud Type: Gel Chem

Cushion Type:

Oil API:

deg API

Mud Weight: 9.00 lb/gal

Cushion Length:

ft

Water Salinity:

ppm

Viscosity: 50.00 sec/qt

Cushion Volume:

bbbl

Water Loss: 7.59 in³

Gas Cushion Type:

Resistivity: ohm.m

Gas Cushion Pressure:

psig

Salinity: 3700.00 ppm

Filter Cake: inches

Recovery Information

Recovery Table

Length ft	Description	Volume bbl
60.00	10%Gas/5%Oil/85%Mud	0.295

Total Length: 60.00 ft Total Volume: 0.295 bbl

Num Fluid Samples: 0

Num Gas Bombs: 0

Serial #:

Laboratory Name:

Laboratory Location:

Recovery Comments:

Serial #: 8354

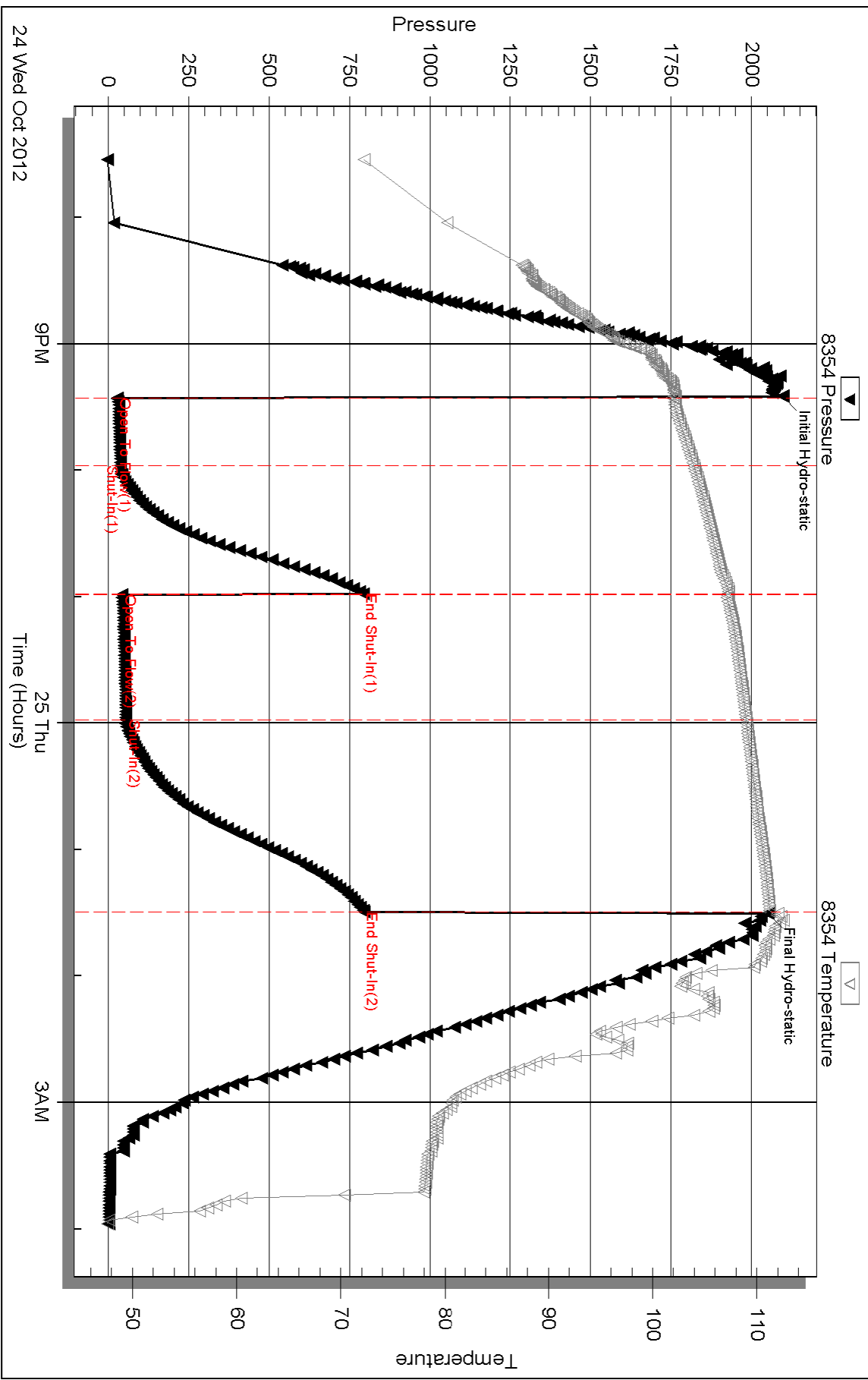
Inside

Cobalt Energy, LLC.

Miner Unit "A" #1-27

DST Test Number: 1

Pressure vs. Time



Triobite Testing, Inc

Ref. No: 47949

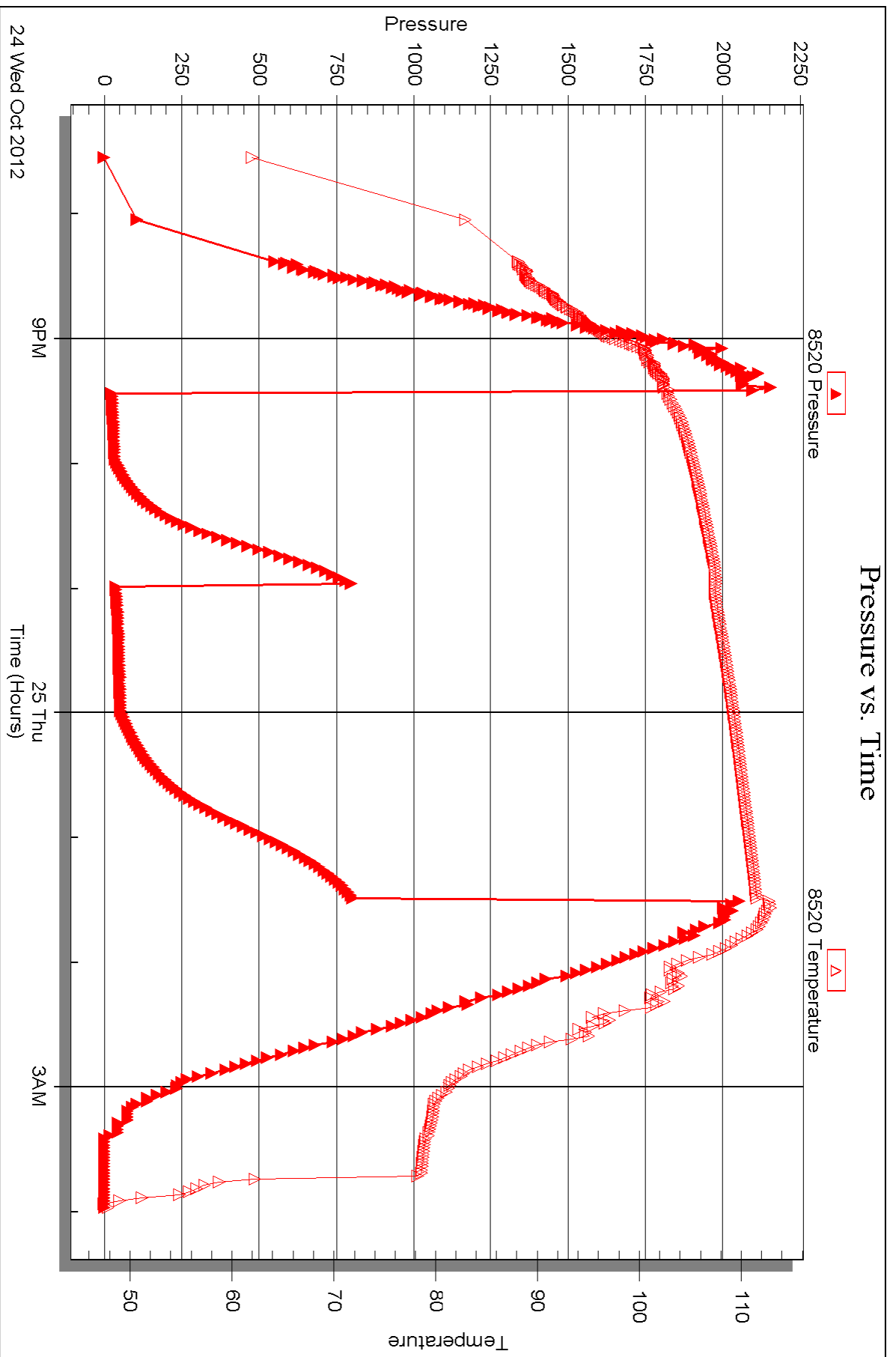
Printed: 2012.10.31 @ 13:24:44

Serial #: 8520

Outside Cobalt Energy, LLC.

Miner Unit "A" #1-27

DST Test Number: 1



Triobite Testing, Inc

Ref. No: 47949

Printed: 2012.10.31 @ 13:24:46



DRILL STEM TEST REPORT

Prepared For: **Cobalt Energy, LLC.**

PO Box 8037
Wichita, KS 67208

ATTN: Robert Hendrix

Miner Unit "A" #1-27

27-18s-24w Ness,KS

Start Date: 2012.10.25 @ 17:10:30

End Date: 2012.10.26 @ 03:02:30

Job Ticket #: 47950 DST #: 2

Trilobite Testing, Inc
PO Box 362 Hays, KS 67601
ph: 785-625-4778 fax: 785-625-5620

Printed: 2012.10.31 @ 13:23:15



TRILOBITE TESTING, INC.

DRILL STEM TEST REPORT

Cobalt Energy, LLC.

27-18s-24w Ness, KS

PO Box 8037
Wichita, KS 67208

Miner Unit "A" #1-27

ATTN: Robert Hendrix

Job Ticket: 47950

DST#: 2

Test Start: 2012.10.25 @ 17:10:30

GENERAL INFORMATION:

Formation: **Mississippian**

Deviated: No Whipstock: ft (KB)

Time Tool Opened: 19:09:00

Time Test Ended: 03:02:30

Test Type: Conventional Bottom Hole (Initial)

Tester: Dustin Rash

Unit No: 38

Interval: 4298.00 ft (KB) To 4323.00 ft (KB) (TVD)

Reference Elevations: 2289.00 ft (KB)

Total Depth: 4323.00 ft (KB) (TVD)

2284.00 ft (CF)

Hole Diameter: 7.88 inches Hole Condition: Fair

KB to GR/CF: 5.00 ft

Serial #: 8354 Inside

Press @ Run Depth: 717.69 psig @ 4300.00 ft (KB)

Capacity: 8000.00 psig

Start Date: 2012.10.25

End Date:

2012.10.26

Last Calib.: 2012.10.26

Start Time: 17:20:30

End Time:

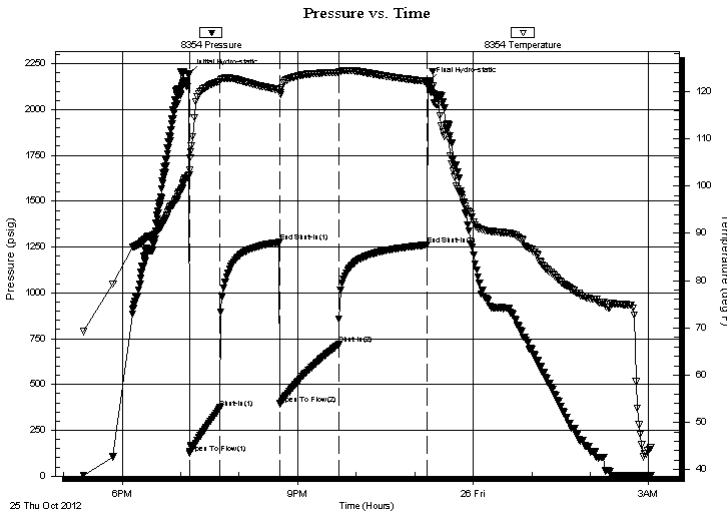
03:02:30

Time On Btm: 2012.10.25 @ 19:08:40

Time Off Btm: 2012.10.25 @ 23:14:30

TEST COMMENT: IF-Strong building blow . BOB in 2 minutes 30 seconds.
ISI-Return @ 30 seconds. Built to 3 inches.
FF-Strong building blow . BOB in 3 minutes.
FSI-No Return.

PRESSURE SUMMARY



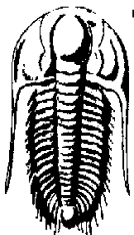
Time (Min.)	Pressure (psig)	Temp (deg F)	Annotation
0	2195.73	102.31	Initial Hydro-static
1	126.16	102.35	Open To Flow (1)
32	373.34	122.19	Shut-In(1)
93	1275.69	120.31	End Shut-In(1)
94	394.49	119.65	Open To Flow (2)
154	717.69	124.09	Shut-In(2)
245	1261.82	122.16	End Shut-In(2)
246	2150.13	121.82	Final Hydro-static

Recovery

Length (ft)	Description	Volume (bbl)
124.00	20%Gas/60%Oil/20%Mud	0.61
1829.00	50%Gas/50%Oil	25.09

Gas Rates

	Choke (inches)	Pressure (psig)	Gas Rate (Mcf/d)



TRILOBITE TESTING, INC.

DRILL STEM TEST REPORT

Cobalt Energy, LLC.

27-18s-24w Ness,KS

PO Box 8037
Wichita, KS 67208

Miner Unit "A" #1-27

Job Ticket: 47950 **DST#: 2**

ATTN: Robert Hendrix

Test Start: 2012.10.25 @ 17:10:30

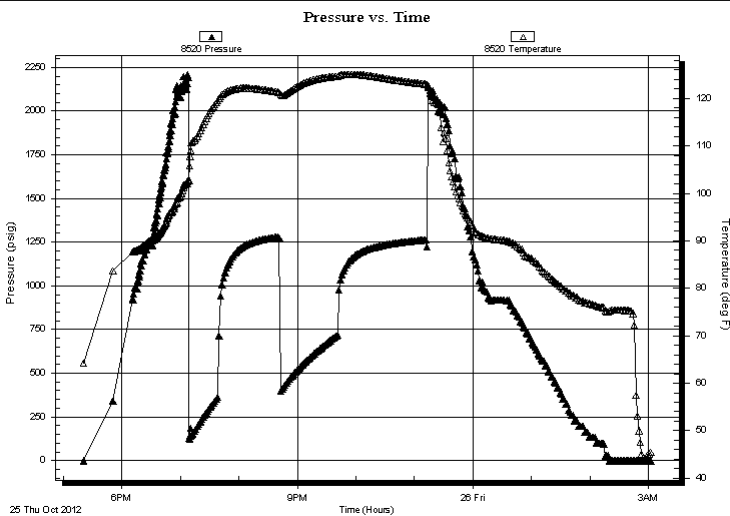
GENERAL INFORMATION:

Formation: **Mississippian**
Deviated: No Whipstock: ft (KB)
Time Tool Opened: 19:09:00
Time Test Ended: 03:02:30
Interval: **4298.00 ft (KB) To 4323.00 ft (KB) (TVD)**
Total Depth: 4323.00 ft (KB) (TVD)
Hole Diameter: 7.88 inches Hole Condition: Fair
Reference Elevations: 2289.00 ft (KB)
2284.00 ft (CF)
KB to GR/CF: 5.00 ft
Test Type: Conventional Bottom Hole (Initial)
Tester: Dustin Rash
Unit No: 38

Serial #: 8520 Outside

Press @ Run Depth: psig @ 4300.00 ft (KB) Capacity: 8000.00 psig
Start Date: 2012.10.25 End Date: 2012.10.26 Last Calib.: 2012.10.26
Start Time: 17:20:45 End Time: 03:02:15 Time On Btm:
Time Off Btm:

TEST COMMENT: IF-Strong building blow . BOB in 2 minutes 30 seconds.
ISI-Return @ 30 seconds. Built to 3 inches.
FF-Strong building blow . BOB in 3 minutes.
FSI-No Return.



PRESSURE SUMMARY

Time (Min.)	Pressure (psig)	Temp (deg F)	Annotation

Recovery

Length (ft)	Description	Volume (bbl)
124.00	20%Gas/60%Oil/20%Mud	0.61
1829.00	50%Gas/50%Oil	25.09

Gas Rates

	Choke (inches)	Pressure (psig)	Gas Rate (Mcf/d)



**TRILOBITE
TESTING, INC.**

DRILL STEM TEST REPORT

TOOL DIAGRAM

Cobalt Energy, LLC.

27-18s-24w Ness, KS

PO Box 8037
Wichita, KS 67208

Miner Unit "A" #1-27

Job Ticket: 47950

DST#: 2

ATTN: Robert Hendrix

Test Start: 2012.10.25 @ 17:10:30

Tool Information

Drill Pipe:	Length: 4102.00 ft	Diameter: 3.80 inches	Volume: 57.54 bbl	Tool Weight:	3000.00 lb
Heavy Wt. Pipe:	Length: 0.00 ft	Diameter: 2.70 inches	Volume: 0.00 bbl	Weight set on Packer:	24000.00 lb
Drill Collar:	Length: 186.00 ft	Diameter: 2.25 inches	Volume: 0.91 bbl	Weight to Pull Loose:	5000.00 lb
			<u>Total Volume: 58.45 bbl</u>	Tool Chased	0.00 ft
Drill Pipe Above KB:	18.00 ft			String Weight: Initial	52000.00 lb
Depth to Top Packer:	4298.00 ft			Final	lb
Depth to Bottom Packer:	ft				
Interval between Packers:	25.00 ft				
Tool Length:	53.00 ft				
Number of Packers:	2	Diameter: 6.75 inches			

Tool Comments:

Tool Description	Length (ft)	Serial No.	Position	Depth (ft)	Accum. Lengths
------------------	-------------	------------	----------	------------	----------------

Change Over Sub	1.00			4271.00	
Shut In Tool	5.00			4276.00	
Hydraulic tool	5.00			4281.00	
Jars	5.00			4286.00	
Safety Joint	3.00			4289.00	
Packer	5.00			4294.00	28.00 Bottom Of Top Packer
Packer	4.00			4298.00	
Stubb	1.00			4299.00	
Perforations	1.00			4300.00	
Recorder	0.00	8354	Inside	4300.00	
Recorder	0.00	8520	Outside	4300.00	
Perforations	20.00			4320.00	
Bullnose	3.00			4323.00	25.00 Bottom Packers & Anchor

Total Tool Length: 53.00



**TRILOBITE
TESTING, INC.**

DRILL STEM TEST REPORT

FLUID SUMMARY

Cobalt Energy, LLC.

27-18s-24w Ness, KS

PO Box 8037
Wichita, KS 67208

Miner Unit "A" #1-27

Job Ticket: 47950

DST#: 2

ATTN: Robert Hendrix

Test Start: 2012.10.25 @ 17:10:30

Mud and Cushion Information

Mud Type: Gel Chem

Cushion Type:

Oil API:

40 deg API

Mud Weight: 9.00 lb/gal

Cushion Length:

ft

Water Salinity:

ppm

Viscosity: 48.00 sec/qt

Cushion Volume:

bbbl

Water Loss: 9.58 in³

Gas Cushion Type:

Resistivity: ohm.m

Gas Cushion Pressure:

psig

Salinity: 3800.00 ppm

Filter Cake: inches

Recovery Information

Recovery Table

Length ft	Description	Volume bbbl
124.00	20%Gas/60%Oil/20%Mud	0.610
1829.00	50%Gas/50%Oil	25.091

Total Length: 1953.00 ft

Total Volume: 25.701 bbl

Num Fluid Samples: 0

Num Gas Bombs: 0

Serial #:

Laboratory Name:

Laboratory Location:

Recovery Comments:

Serial #: 8354

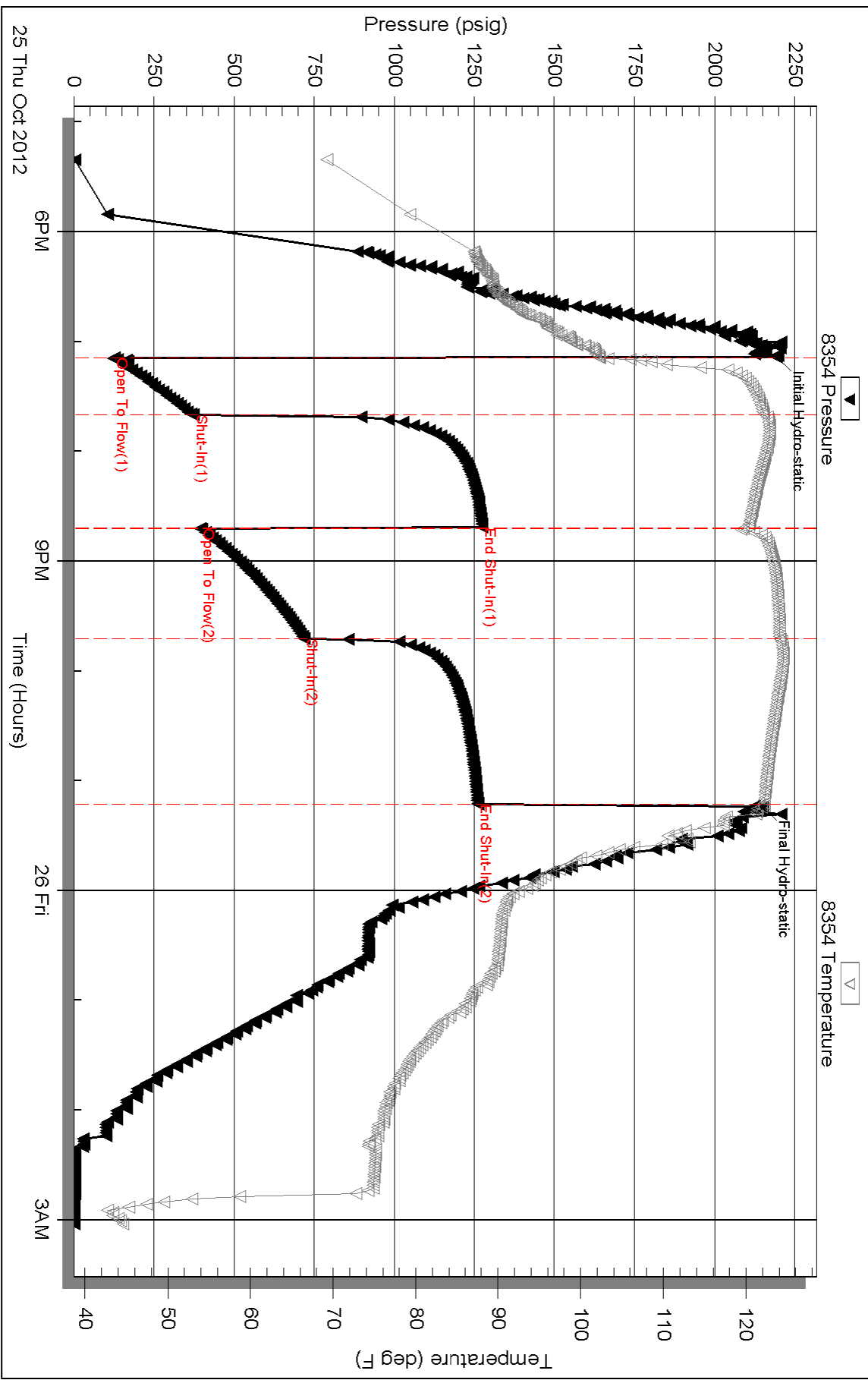
Inside

Cobalt Energy, LLC.

Miner Unit "A" #1-27

DST Test Number: 2

Pressure vs. Time

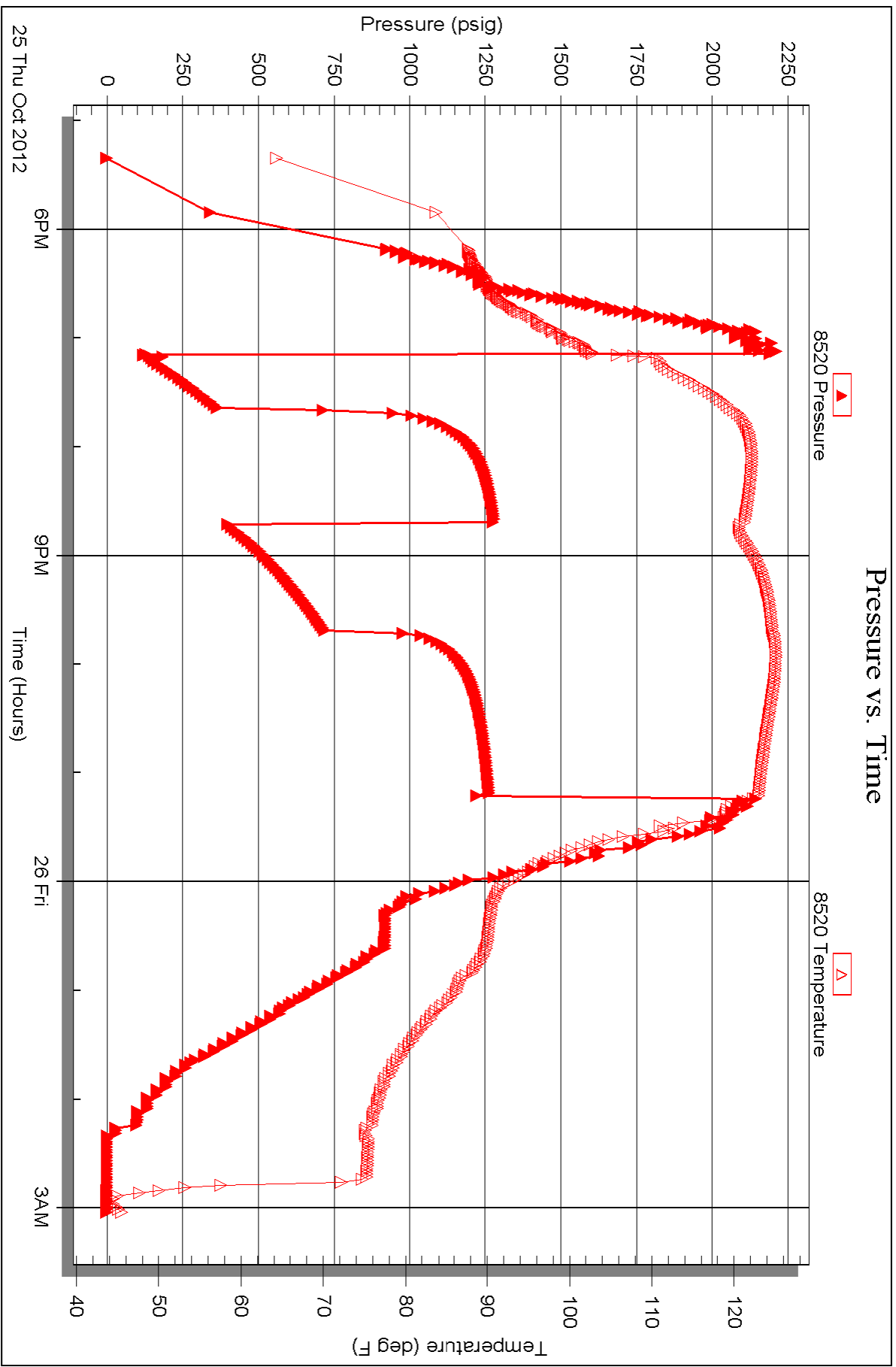


Serial #: 8520

Outside Cobalt Energy, LLC.

Mer Unit "A" #1-27

DST Test Number: 2





TRILOBITE TESTING INC.

P.O. Box 1733 • Hays, Kansas 67601

Test Ticket

NO. 47949

Well Name & No. Miner Unit "A" #1-27 Test No. 1 Date 10-24-12
 Company Cobalt Energy LLC. Elevation 2289 KB 2284 GL
 Address P.O. Box 8037 Wichita, KS 67208
 Co. Rep / Geo. Robert Hendrix Rig Mullin 8
 Location: Sec. 27 Twp. 18S Rge. 24W Co. Ness State KS

Interval Tested 4183-4226 Zone Tested Fr. Scott
 Anchor Length 43' Drill Pipe Run _____ Mud Wt. 9.2
 Top Packer Depth 4178 Drill Collars Run 186 Vis 50
 Bottom Packer Depth 4183 Wt. Pipe Run 0 WL 7.6
 Total Depth 4226 Chlorides 3700 ppm System LCM 3#
 Blow Description IF - Very weak building blow. Built to 3 inches
ISI - No Return
FF - Very weak building blow. Built to 7 inches.
FST - No Return.

Rec	Feet of	%gas	%oil	%water	%mud
<u>60</u>	<u>VSGOCM</u>	<u>10</u>	<u>5</u>	<u>85</u>	
Rec _____	Feet of _____	%gas _____	%oil _____	%water _____	%mud _____
Rec _____	Feet of _____	%gas _____	%oil _____	%water _____	%mud _____
Rec _____	Feet of _____	%gas _____	%oil _____	%water _____	%mud _____
Rec _____	Feet of _____	%gas _____	%oil _____	%water _____	%mud _____

Rec Total 60 BHT 112 Gravity _____ API RW _____ @ _____ °F Chlorides _____ ppm

(A) Initial Hydrostatic Test 1250 T-On Location 1715
 (B) First Initial Flow Jars 250 T-Started 1930
 (C) First Final Flow Safety Joint 75 T-Open 2125
 (D) Initial Shut-In Circ Sub _____ T-Pulled 0130
 (E) Second Initial Flow Hourly Standby _____ T-Out 0400
 (F) Second Final Flow Mileage 66X2 204.60 Comments Best 1922
 (G) Final Shut-In Sampler _____
 (H) Final Hydrostatic Straddle _____
 Shale Packer _____
 Extra Packer _____
 Extra Recorder _____
 Day Standby _____
 Accessibility _____

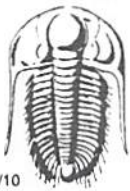
Initial Open 30
 Initial Shut-In 60
 Final Flow 60
 Final Shut-In 90

Sub Total 1779.60

MP/DST Disc't _____

Approved By _____ Our Representative [Signature]

TriLOBite Testing Inc. shall not be liable for damaged of any kind of the property or personnel of the one for whom a test is made, or for any loss suffered or sustained, directly or indirectly, through the use of its equipment, or its statements or opinion concerning the results of any test, tools lost or damaged in the hole shall be paid for at cost by the party for whom the test is made.



TRILOBITE TESTING INC.

P.O. Box 1733 • Hays, Kansas 67601

Test Ticket

NO. 47950

Well Name & No. Miner Unit "A" #127 Test No. 2 Date 10-25-12
 Company Cobalt Energy, LLC Elevation 2289 KB 2284 GL
 Address P.O. Box 8037 Wichita, KS 67208
 Co. Rep / Geo. Robert Hendrix Rig Mullin 8
 Location: Sec. 27 Twp. 18S Rge. 24W Co. Ness State KS

Interval Tested 4298-4323 Zone Tested Mississippian
 Anchor Length 25' Drill Pipe Run 4102 Mud Wt. 9.3
 Top Packer Depth 4293 Drill Collars Run 186.09 Vis 48
 Bottom Packer Depth 4298 Wt. Pipe Run ⊖ WL 9.6
 Total Depth 4323 Chlorides 3800 ppm System LCM 2#

Blow Description IF - Strong building blow, BOB in 2 minutes 30 seconds,
IF - Return @ 30 seconds, Built to 3 inches,
FF - Strong building blow, BOB in 3 minutes,
FSI - No Return

Rec	Feet of	%gas	%oil	%water	%mud
<u>1827</u>	<u>Gassy oil</u>	<u>50</u>	<u>50</u>		
<u>124</u>	<u>Gassy MCO</u>	<u>20</u>	<u>60</u>		<u>20</u>
Rec	Feet of	%gas	%oil	%water	%mud
Rec	Feet of	%gas	%oil	%water	%mud
Rec	Feet of	%gas	%oil	%water	%mud

Rec Total 1953 BHT 124 Gravity 40 API RW @ _____ °F Chlorides _____ ppm

(A) Initial Hydrostatic 2196 Test 1250 T-On Location 1545
 (B) First Initial Flow 126 Jars 250 T-Started 1715
 (C) First Final Flow 373 Safety Joint 75 T-Open 1909
 (D) Initial Shut-In 1276 Circ Sub T-Pulled 2315
 (E) Second Initial Flow 394 Hourly Standby T-Out 0300
 (F) Second Final Flow 718 Mileage 66 X2 204.60 Comments BHT-1710
 (G) Final Shut-In 1262 Sampler
 (H) Final Hydrostatic 2150 Straddle Ruined Shale Packer
 Shale Packer Ruined Packer
 Extra Packer Extra Copies
 Extra Recorder Sub Total 0
 Day Standby Total 1779.60
 Accessibility MP/DST Disc't

Initial Open 30
 Initial Shut-In 60
 Final Flow 60
 Final Shut-In 90

Approved By _____ Our Representative [Signature]
 Sub Total 1779.60

Trilobite Testing Inc. shall not be liable for damaged of any kind of the property or personnel of the one for whom a test is made, or for any loss suffered or sustained, directly or indirectly, through the use of its equipment, or its statements or opinion concerning the results of any test, tools lost or damaged in the hole shall be paid for at cost by the party for whom the test is made.